

DISTRICT I  
1625 N. FRENCH DR., HOBBS, NM 88240

DISTRICT II  
1301 W. GRAND AVENUE, ARTESIA, NM 88210

DISTRICT III  
1000 Rio Brazos Rd., Aztec, NM 87410

DISTRICT IV  
1220 S. ST. FRANCIS DR., SANTA FE, NM 87505

State of New Mexico  
Energy, Minerals and Natural Resources Department

OIL CONSERVATION DIVISION  
1220 SOUTH ST. FRANCIS DR.  
Santa Fe, New Mexico 87505

Form C-102  
Revised October 12, 2005  
Submit to Appropriate District Office  
State Lease - 4 Copies  
Fee Lease - 3 Copies

WELL LOCATION AND ACREAGE DEDICATION PLAT

☐ AMENDED REPORT

API Number <b>30-025-38311</b>		Pool Code	Pool Name
Property Code	Property Name <b>NMGSA UNIT</b>		Well Number <b>352</b>
OGRID No.	Operator Name <b>APACHE CORPORATION</b>		Elevation <b>3673'</b>

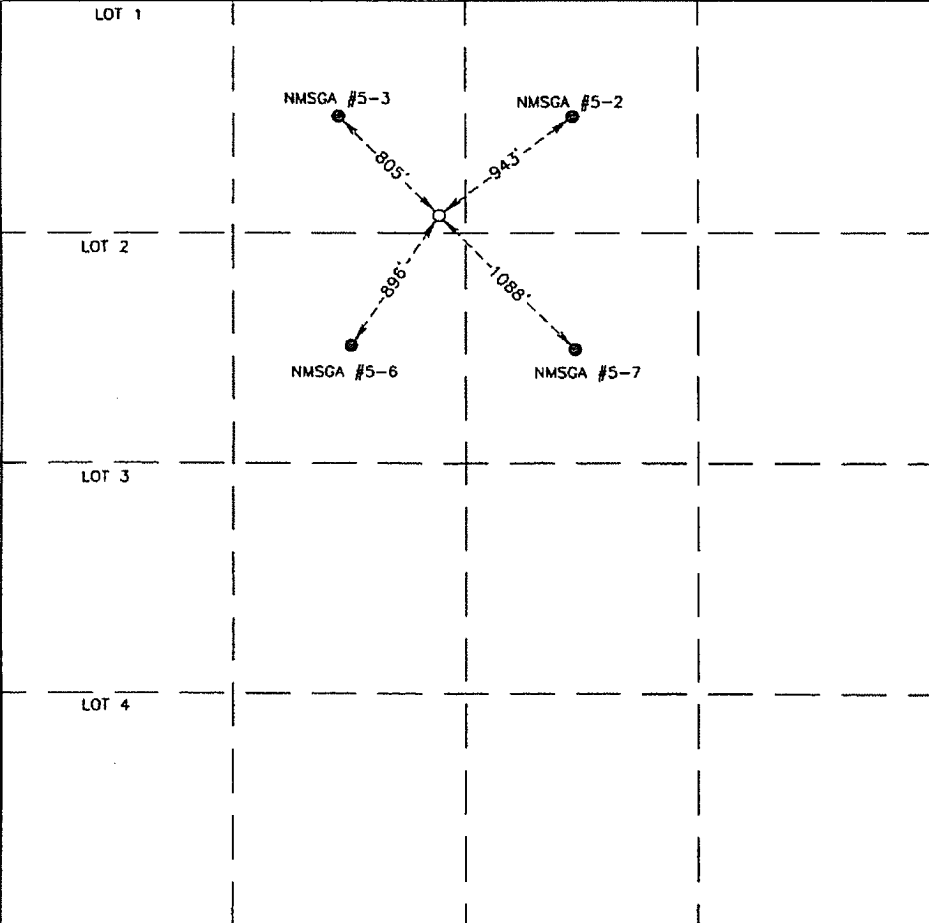
Surface Location

UL or lot No.	Section	Township	Range	Lot Idn	Feet from the	North/South line	Feet from the	East/West line	County
C	19	19-S	37-E		1220	NORTH	2490	WEST	LEA

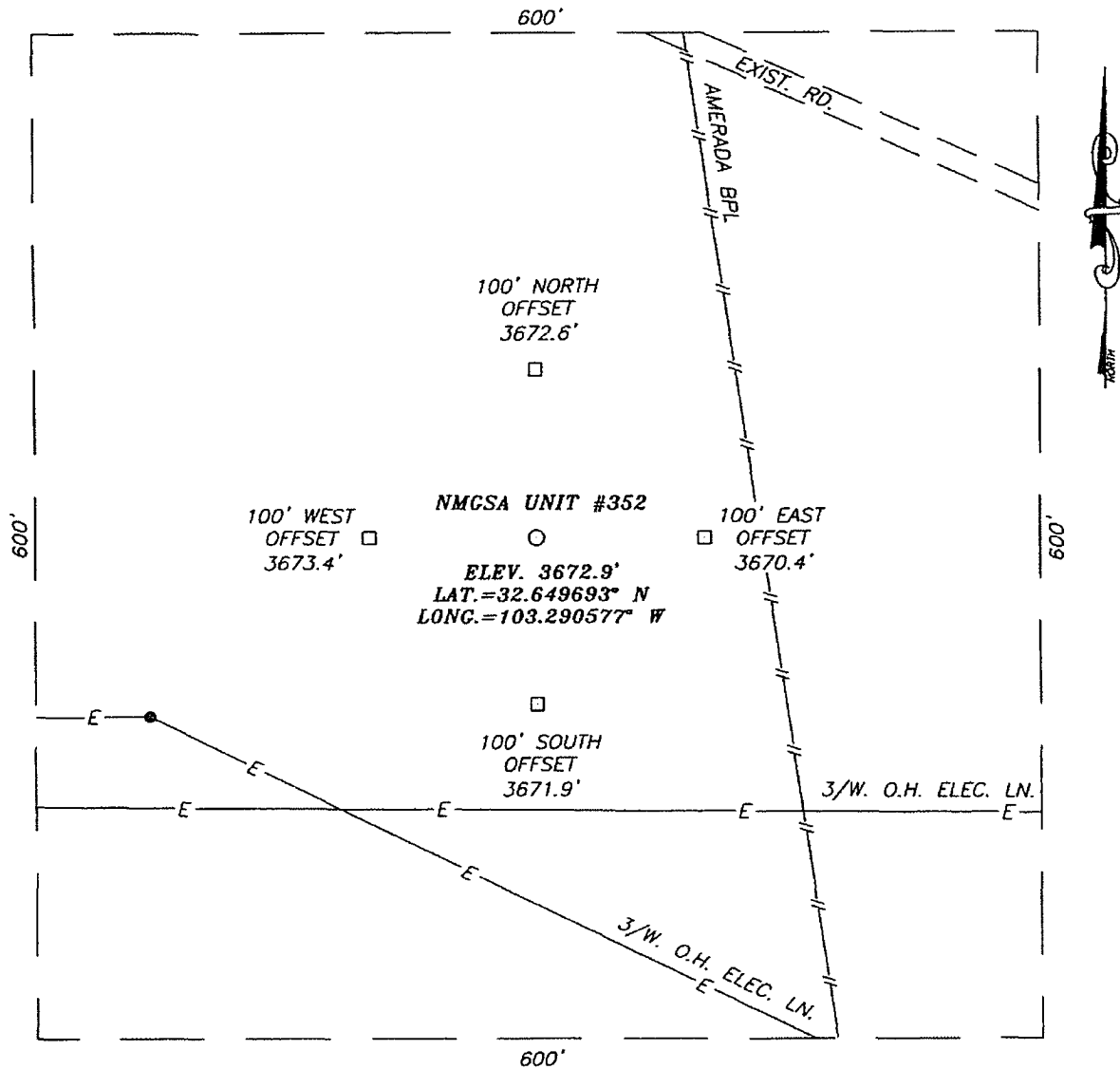
Bottom Hole Location If Different From Surface

UL or lot No.	Section	Township	Range	Lot Idn	Feet from the	North/South line	Feet from the	East/West line	County
Dedicated Acres		Joint or Infill	Consolidation Code		Order No.				

NO ALLOWABLE WILL BE ASSIGNED TO THIS COMPLETION UNTIL ALL INTERESTS HAVE BEEN CONSOLIDATED  
OR A NON-STANDARD UNIT HAS BEEN APPROVED BY THE DIVISION

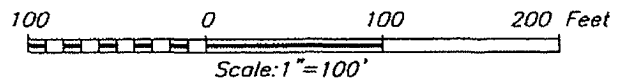
	<b>OPERATOR CERTIFICATION</b> <i>I hereby certify that the information herein is true and complete to the best of my knowledge and belief, and that this organization either owns a working interest or unleased mineral interest in the land including the proposed bottom hole location or has a right to drill this well at this location pursuant to a contract with an owner of such mineral or working interest, or to a voluntary pooling agreement or a compulsory pooling order heretofore entered by the division.</i>  <i>Lana Williams</i> 3/7/07 Signature Date  <i>Lana Williams</i> Printed Name
	<b>SURVEYOR CERTIFICATION</b> <i>I hereby certify that the well location shown on this plat was plotted from field notes of actual surveys made by me or under my supervision, and that the same is true and correct to the best of my belief.</i>  SEPTEMBER 07, 2006 Date Surveyed MR Signature & Seal of Professional Surveyor  06.11.1417 Certificate No. GARY EIDSON 12841

**SECTION 19, TOWNSHIP 19 SOUTH, RANGE 37 EAST, N.M.P.M.,**  
LEA COUNTY, NEW MEXICO



**DIRECTIONS TO LOCATION**

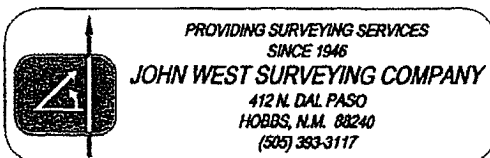
FROM THE INTERSECTION OF ST. HWY. #322 AND CO. RD. H-41 (MADDOX RD.), GO NORTH ON CO. RD. H-41 APPROX. 1.7 MILES. TURN RIGHT AND GO EAST ON APPROX. 0.6 MILES. TURN LEFT AND GO NORTH APPROX. 0.2 MILES. TURN LEFT AND GO NORTHWEST APPROX. 0.1 MILES. THIS LOCATION IS APPROX. 300 FEET SOUTHWEST.



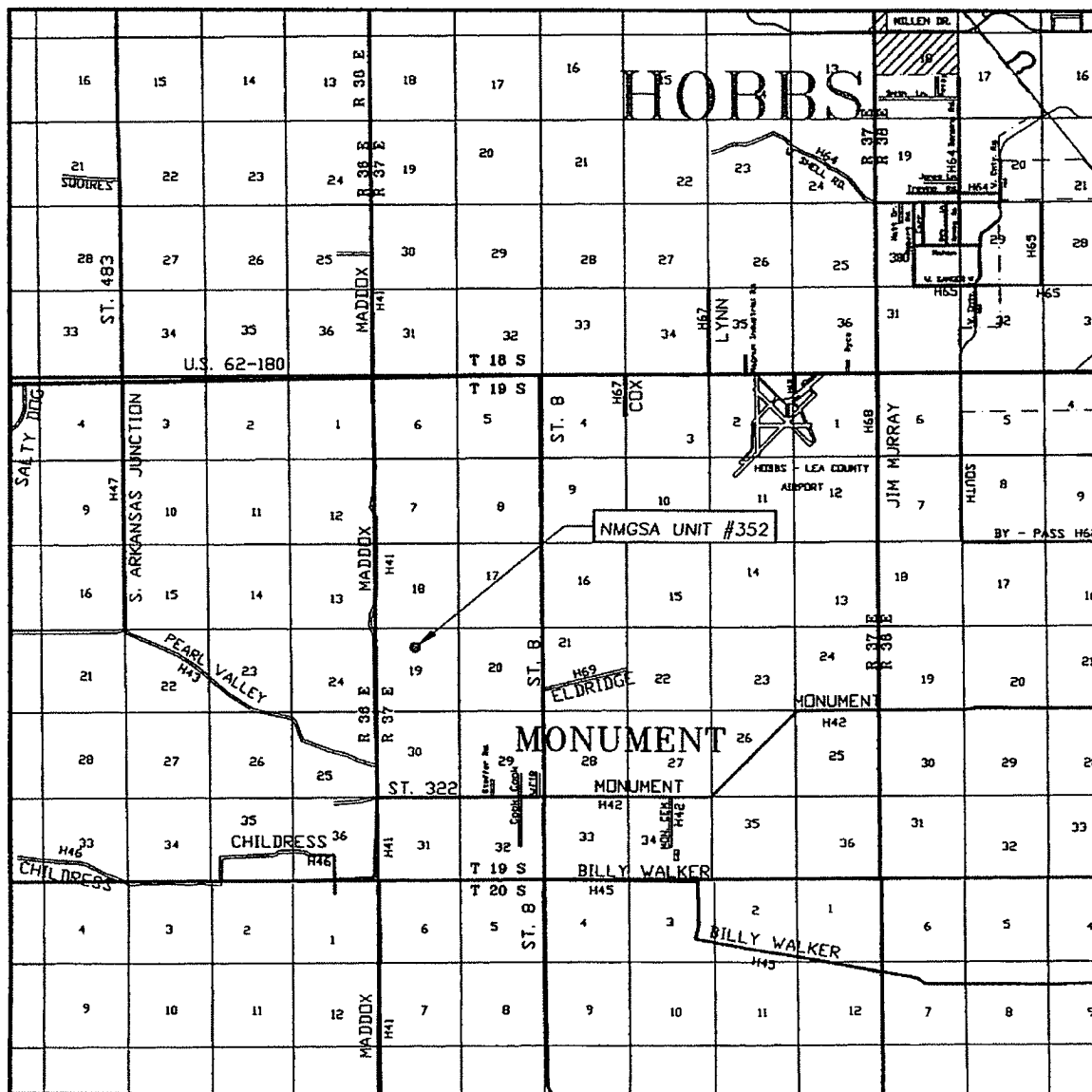
**APACHE CORPORATION**

NMGSA UNIT #352  
LOCATED 1220 FEET FROM THE NORTH LINE  
AND 2490 FEET FROM THE WEST LINE OF SECTION 19,  
TOWNSHIP 19 SOUTH, RANGE 37 EAST, N.M.P.M.,  
LEA COUNTY, NEW MEXICO.

Survey Date: 09/07/06	Sheet 1 of 1 Sheets
W.O. Number: 06.11.1417	Dr By: M.R.
Date: 09/14/06	Rev 1: N/A
Disk: CD#6	06111417
Scale: 1"=100'	

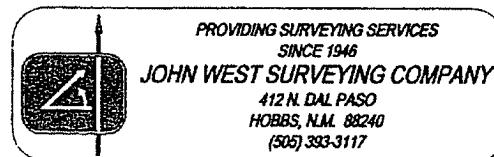


# VICINITY MAP

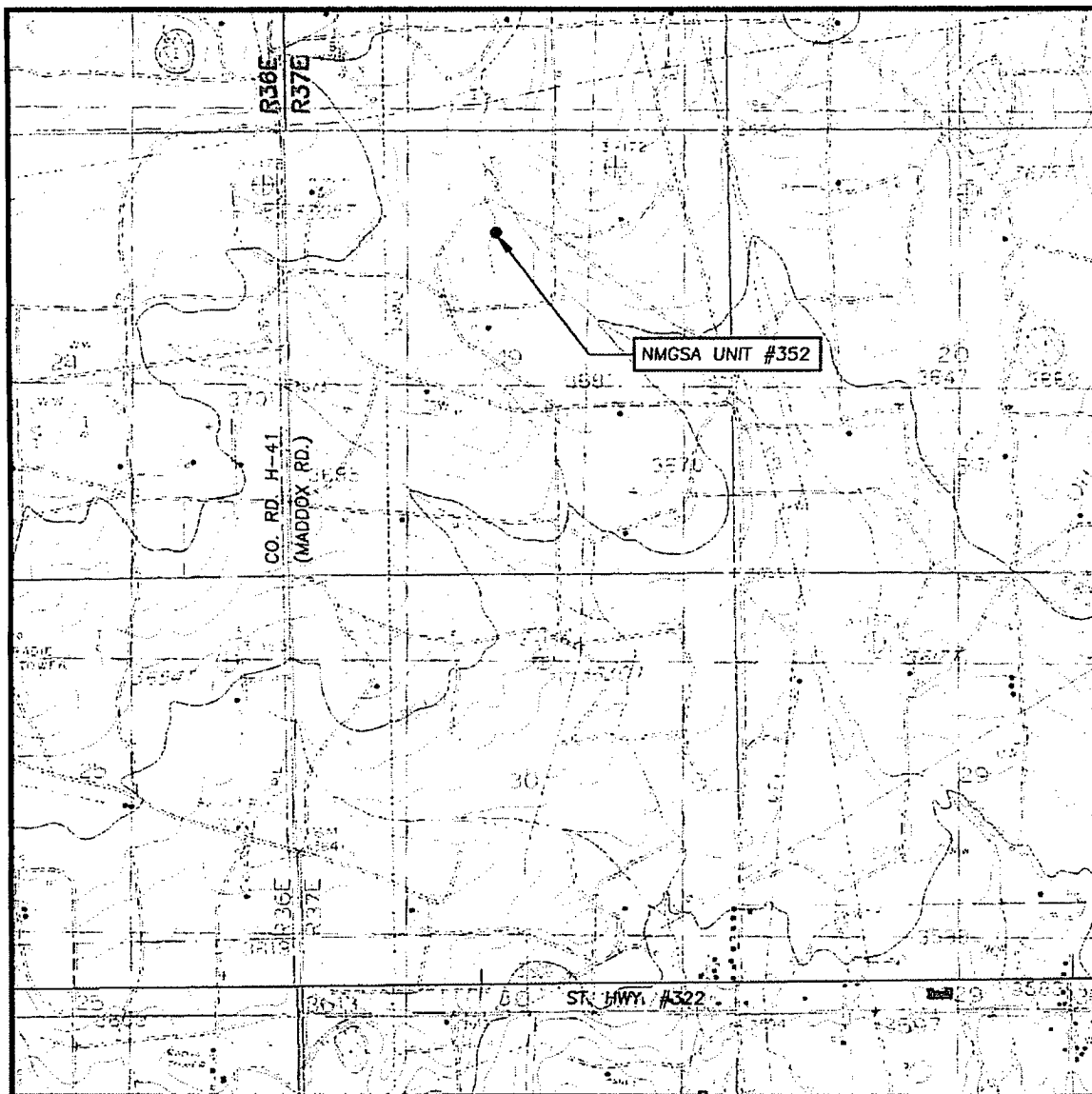


SCALE: 1" = 2 MILES

SEC. 19 TWP. 19-S RGE. 37-E  
 SURVEY N.M.P.M.  
 COUNTY LEA STATE NEW MEXICO  
 DESCRIPTION 1220' FNL & 2490' FWL  
 ELEVATION 3673'  
 OPERATOR APACHE CORPORATION  
 LEASE NMGSA UNIT



# LOCATION VERIFICATION MAP



SCALE: 1" = 2000'

CONTOUR INTERVAL:  
MONUMENT NORTH, N.M. - 10'  
MONUMENT SOUTH, N.M. - 10'

SEC. 19 TWP. 19-S RGE. 37-E

SURVEY N.M.P.M.

COUNTY LEA STATE NEW MEXICO

DESCRIPTION 1220' FNL & 2490' FWL

ELEVATION 3673'

OPERATOR APACHE CORPORATION

LEASE NMGSA UNIT

U.S.G.S. TOPOGRAPHIC MAP  
MONUMENT NORTH, N.M.

