

DISTRICT I

1625 N. FRENCH DR., BOBBS, NM 88240

DISTRICT II

1301 W. GRAND AVENUE, ARTESIA, NM 88210

DISTRICT III

1009 Rio Brazos Rd., Artec, NM 87410

DISTRICT IV

1220 S. ST. FRANCIS DR., SANTA FE, NM 87505

State of New Mexico

Energy, Minerals and Natural Resources Department

OIL CONSERVATION DIVISION

1220 SOUTH ST. FRANCIS DR.

Santa Fe, New Mexico 87505

Form C-102

Revised October 12, 2005

Submit to Appropriate District Office

State Lease - 4 Copies

Fee Lease - 3 Copies

WELL LOCATION AND ACREAGE DEDICATION PLAT

☐ AMENDED REPORT

API Number 30-025-38312		Pool Code	Pool Name
Property Code	Property Name NMGSA UNIT		Well Number 353
OGRID No.	Operator Name APACHE CORPORATION		Elevation 3558'

Surface Location

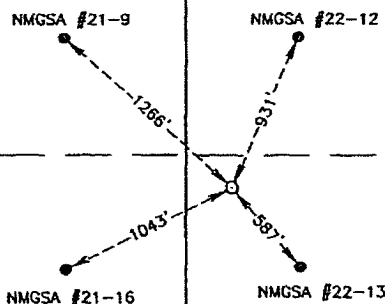
UL or lot No.	Section	Township	Range	Lot Idn	Feet from the	North/South line	Feet from the	East/West line	County
M	4	20-S	37-E		1140	SOUTH	260	WEST	LEA

Bottom Hole Location If Different From Surface

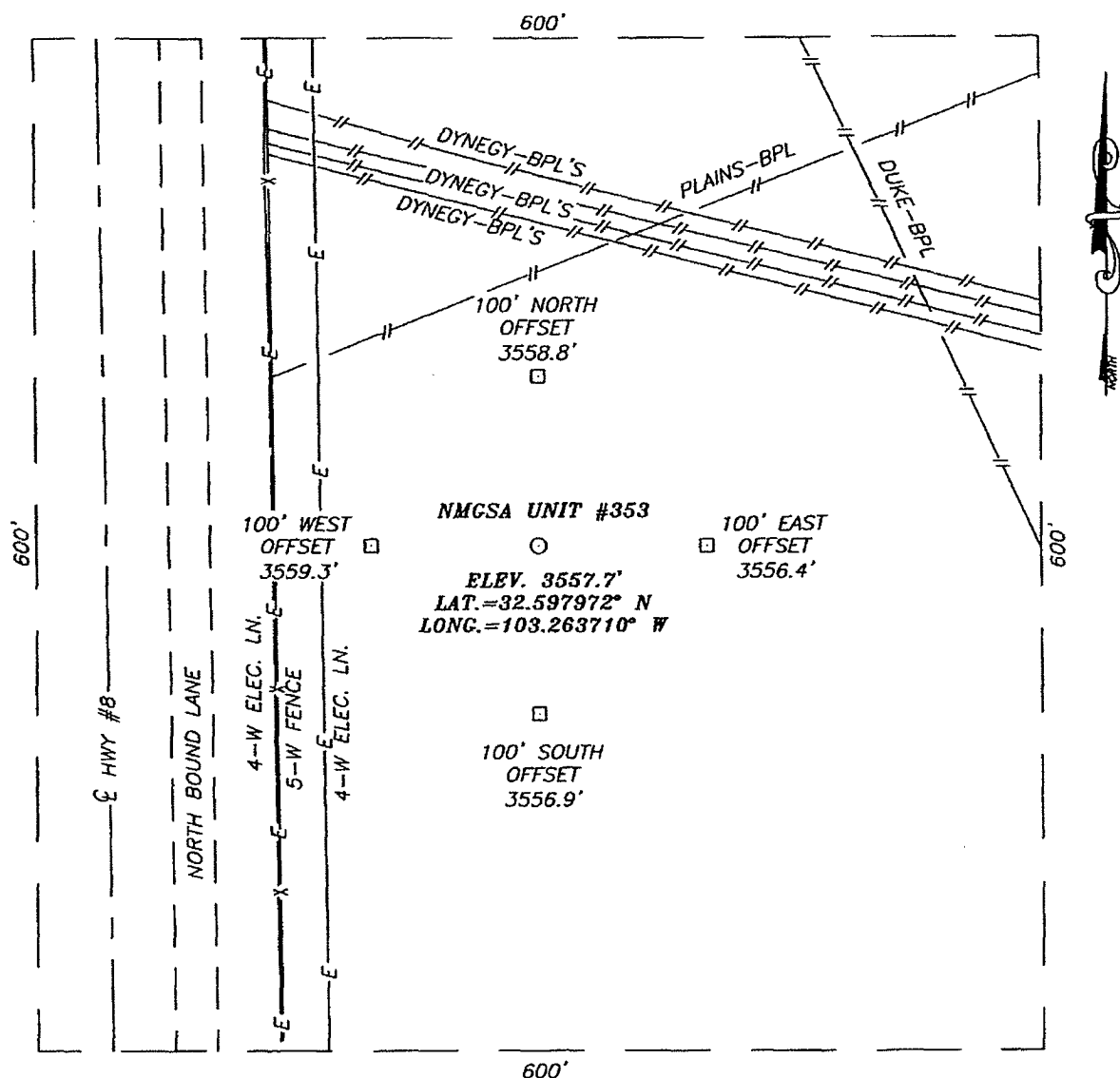
UL or lot No.	Section	Township	Range	Lot Idn	Feet from the	North/South line	Feet from the	East/West line	County
Dedicated Acres		Joint or Infill		Consolidation Code		Order No.			

NO ALLOWABLE WILL BE ASSIGNED TO THIS COMPLETION UNTIL ALL INTERESTS HAVE BEEN CONSOLIDATED
OR A NON-STANDARD UNIT HAS BEEN APPROVED BY THE DIVISION

LOT 1	LOT 4	LOT 3	LOT 2
<p>SECTION 5 SECTION 4</p> <p>GEODETIC COORDINATES NAD 27 NME</p> <p>Y=582910.5 N X=829415.6 E</p> <p>LAT.=32.597972° N LONG.=103.263710° W</p>			
<p>OPERATOR CERTIFICATION</p> <p>I hereby certify that the information herein is true and complete to the best of my knowledge and belief, and that this organization either owns a working interest or unleased mineral interest in the land including the proposed bottom hole location or has a right to drill this well at this location pursuant to a contract with an owner of such mineral or working interest, or to a voluntary pooling agreement or a compulsory pooling order heretofore entered by the division.</p> <p><i>Lana Williams</i> 3/7/07 Signature Date Lana Williams Printed Name</p>			
<p>SURVEYOR CERTIFICATION</p> <p>I hereby certify that the well location shown on this plat was plotted from field notes of actual surveys made by me or under my supervision, and that the same is true and correct to the best of my belief.</p> <p>JANUARY 31, 2007</p> <p>Date Surveyed AR</p> <p>Signature & Seal of Professional Surveyor</p> <p>07.11.0109</p> <p>Certificate No. GARY EIDSON 12841 RONALD J. EIDSON 3239</p>			

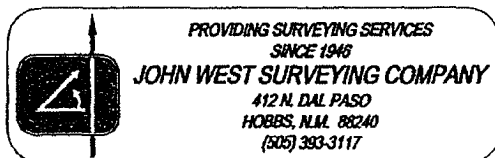
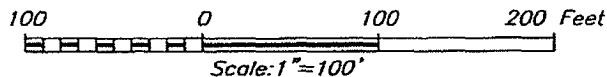


SECTION 4, TOWNSHIP 20 SOUTH, RANGE 37 EAST, N.M.P.M.,
LEA COUNTY, NEW MEXICO



DIRECTIONS TO LOCATION

FROM THE INTERSECTION OF ST. HWY. #8 AND CO. RD. #H45 (BILLY WALKER RD.), GO SOUTH ON ST. HWY. #8 APPROX. 0.85 MILES. TURN LEFT AND GO WEST APPROX. 150 FEET. THIS LOCATION IS APPROX. 350 FEET NORTH.

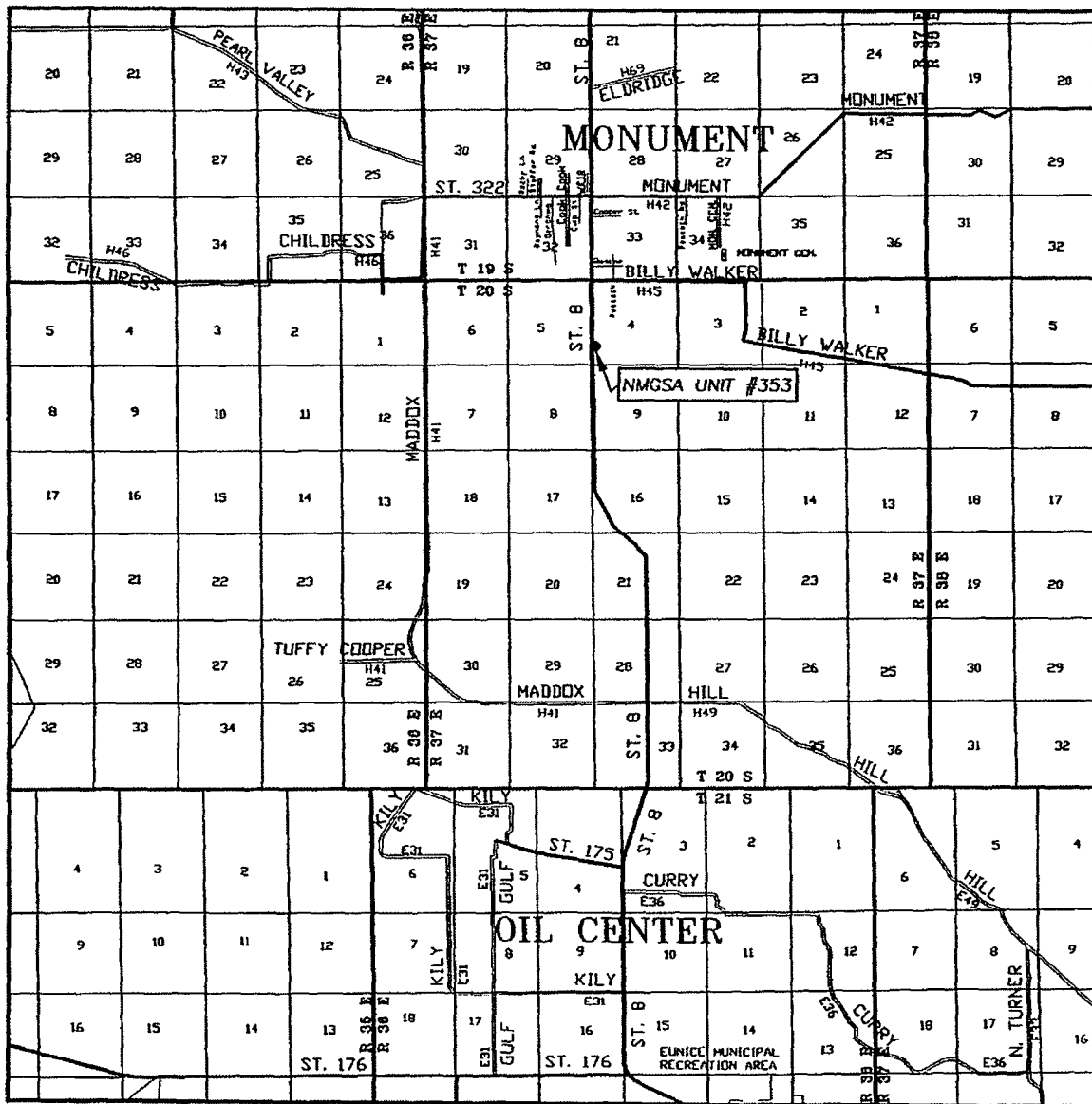


APACHE CORPORATION

NMGSA UNIT #353 WELL
LOCATED 1140 FEET FROM THE SOUTH LINE
AND 260 FEET FROM THE WEST LINE OF SECTION 4,
TOWNSHIP 20 SOUTH, RANGE 37 EAST, N.M.P.M.,
LEA COUNTY, NEW MEXICO.

Survey Date: 01/31/07	Sheet 1 of 1 Sheets
W.O. Number: 07.11.0109	Dr By: AR
Date: 02/02/07	Rev 1:N/A
Disk: CD#5	07110109
Scale: 1"=100'	

VICINITY MAP



SCALE: 1" = 2 MILES

SEC. 4 TWP. 20-S RGE. 37-E

SURVEY N.M.P.M.

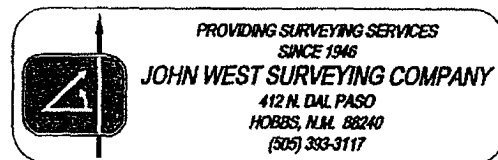
COUNTY LEA STATE NEW MEXICO

DESCRIPTION 1140' FSL & 260' FWL

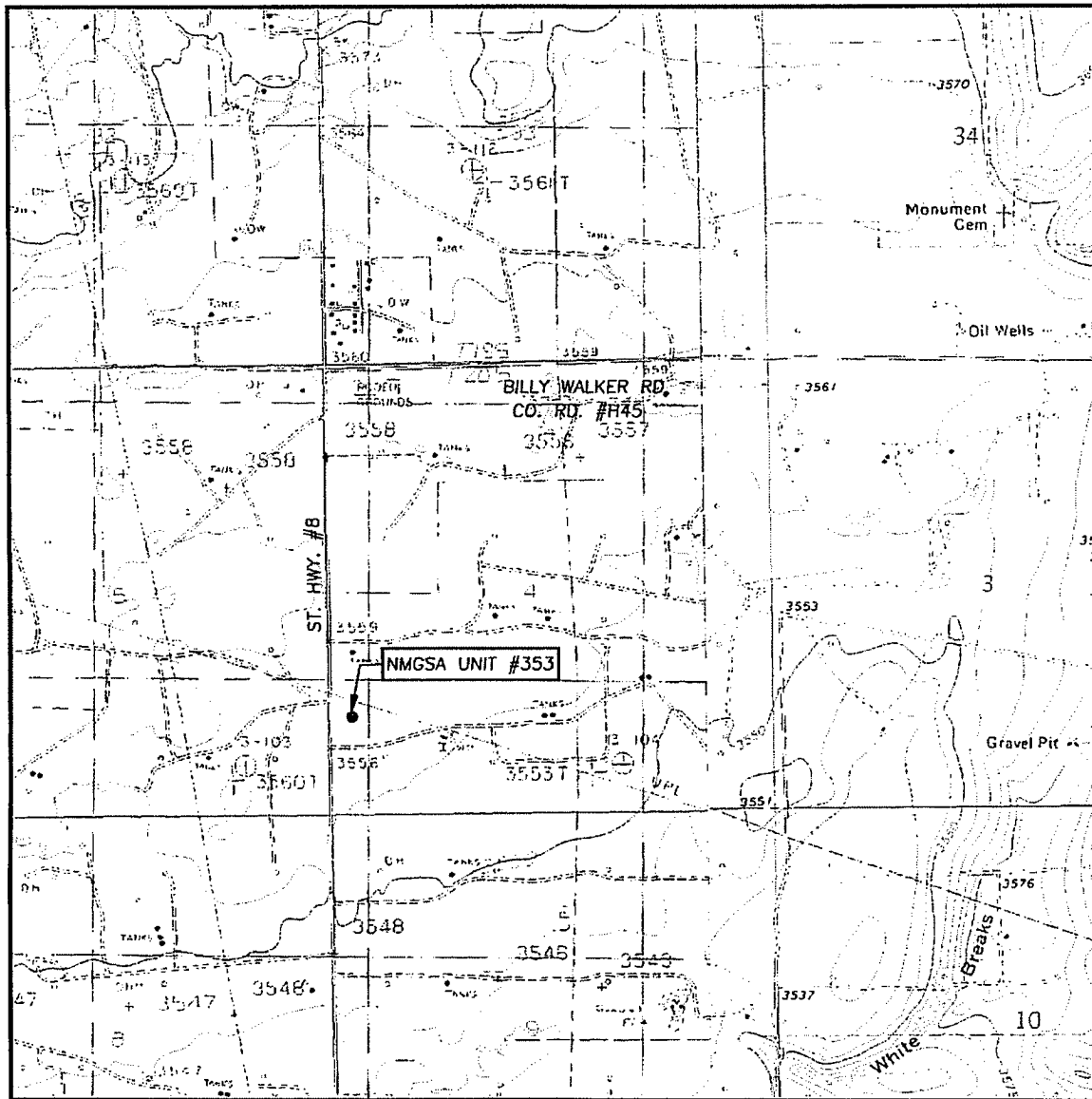
ELEVATION 3558'

OPERATOR APACHE CORPORATION

LEASE NMGSA UNIT



LOCATION VERIFICATION MAP



SCALE: 1" = 2000'

CONTOUR INTERVAL:
MONUMENT SOUTH, N.M. - 5'

SEC. 4 TWP. 20-S RGE. 37-E

SURVEY N.M.P.M.

COUNTY LEA STATE NEW MEXICO

DESCRIPTION 1140' FSL & 260' FWL

ELEVATION 3558'

OPERATOR APACHE CORPORATION

LEASE NMGSA UNIT

U.S.G.S. TOPOGRAPHIC MAP
MONUMENT SOUTH, N.M.

PROVIDING SURVEYING SERVICES
SINCE 1946

JOHN WEST SURVEYING COMPANY

412 N. DAL PASO
HOBBS, N.M. 82240
(505) 393-3117