

## DISTRICT I

1025 N. FRANCHI DR., HOBBES, NM 88240

## DISTRICT II

1301 W. GRAND AVENUE, ARTESIA, NM 88210

## DISTRICT III

1000 Rio Brazos Ed., Aztec, NM 87410

## State of New Mexico

Energy, Minerals and Natural Resources Department

## OIL CONSERVATION DIVISION

1220 SOUTH ST. FRANCIS DR.  
Santa Fe, New Mexico 87505

Form C-102

Revised October 12, 2005

Submit to Appropriate District Office

State Lease - 4 Copies

Fee Lease - 3 Copies

## DISTRICT IV

1220 S. ST. FRANCIS DR., SANTA FE, NM 87505

## WELL LOCATION AND ACREAGE DEDICATION PLAT

☐ AMENDED REPORT

API Number <b>32-025-38314</b>		Pool Code	Pool Name
Property Code	Property Name <b>NMGSA UNIT</b>		Well Number <b>356</b>
OGRID No.	Operator Name <b>APACHE CORPORATION</b>		Elevation <b>3699'</b>

## Surface Location

UL or lot No.	Section	Township	Range	Lot Idn	Feet from the	North/South line	Feet from the	East/West line	County
F	18	19-S	37-E		2630	NORTH	1370	WEST	LEA

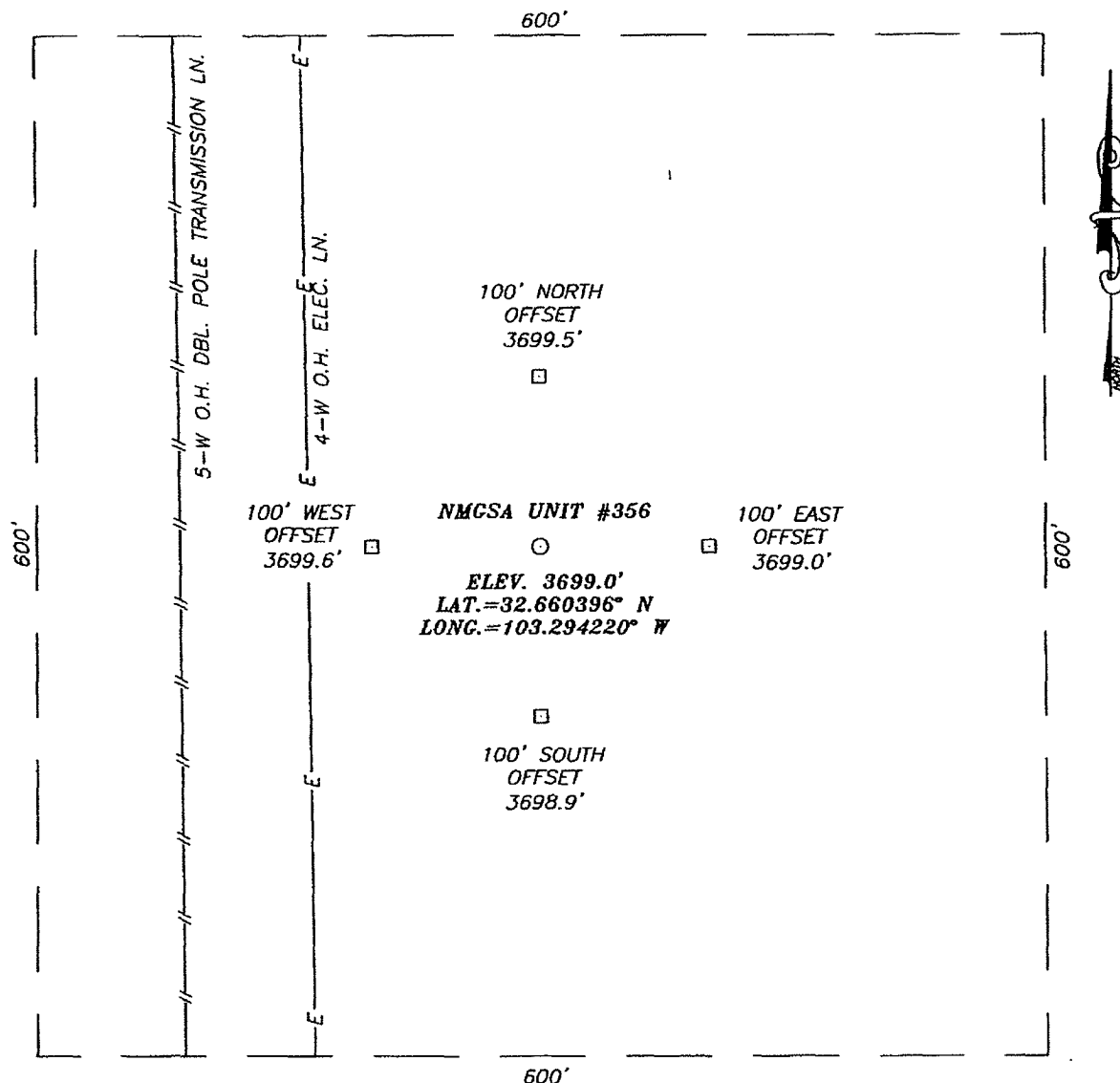
## Bottom Hole Location If Different From Surface

UL or lot No.	Section	Township	Range	Lot Idn	Feet from the	North/South line	Feet from the	East/West line	County
Dedicated Acres		Joint or Infill		Consolidation Code		Order No.			

NO ALLOWABLE WILL BE ASSIGNED TO THIS COMPLETION UNTIL ALL INTERESTS HAVE BEEN CONSOLIDATED  
OR A NON-STANDARD UNIT HAS BEEN APPROVED BY THE DIVISION

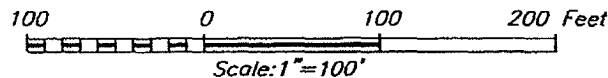
LOT 1				<p><b>OPERATOR CERTIFICATION</b></p> <p>I hereby certify that the information herein is true and complete to the best of my knowledge and belief, and that this organization either owns a working interest or unleased mineral interest in the land including the proposed bottom hole location or has a right to drill this well at this location pursuant to a contract with an owner of such mineral or working interest, or to a voluntary pooling agreement or a compulsory pooling order heretofore entered by the division.</p> <p><i>Lara Williams</i> 3/7/07 Signature Date <i>Lara Williams</i> Printed Name</p>
LOT 2				
LOT 3	<p>NMGSA #02-05</p> <p>NMGSA #02-06</p> <p>935'</p> <p>814'</p>			
LOT 4	<p>NMGSA #02-12</p> <p>NMGSA #02-11</p> <p>897'</p> <p>902'</p>			
<p><b>GEODETC COORDINATES</b> NAD 27 NME</p> <p>Y=605528.3 N X=819797.0 E</p> <p>LAT.=32.660396° N LONG.=103.294220° W</p>				<p><b>SURVEYOR CERTIFICATION</b></p> <p>I hereby certify that the well location shown on this plat was plotted from field notes of actual surveys made by me or under my supervision, and that the same is true and correct to the best of my belief.</p> <p>JANUARY 25, 2007</p> <p>Date Surveyed AR</p> <p>Signature &amp; Seal of Professional Surveyor</p> <p>07.11.0111</p> <p>Certificate No. GARY EIDSON 12641</p>

**SECTION 18, TOWNSHIP 19 SOUTH, RANGE 37 EAST, N.M.P.M.,**  
 LEA COUNTY, NEW MEXICO



**DIRECTIONS TO LOCATION**

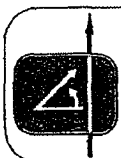
FROM THE INTERSECTION OF U.S. HWY. # 62-180 AND CO. RD. #H41 (MADDOX RD.), GO SOUTH ON MADDOX RD. APPROX. 2.4 MILES. TURN LEFT AND GO EAST APPROX. 0.2 MILES. TURN RIGHT AND GO SOUTH ALONG MIAN TRANSMISSION LINE TRAIL RD. APPROX. 0.1 MILE. THIS LOCATION IS APPROX. 215 FEET EAST.



**APACHE CORPORATION**

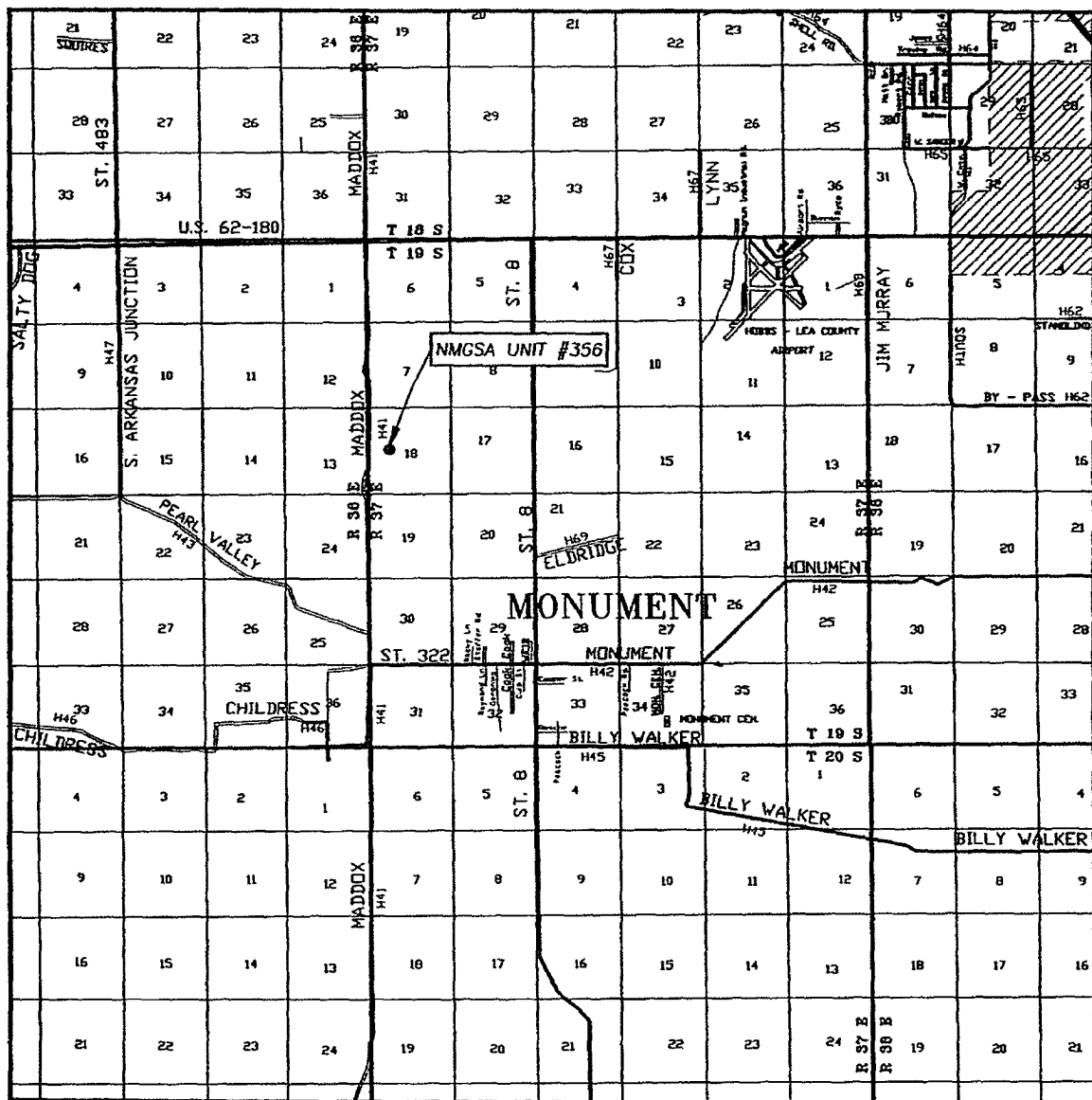
NMCSA UNIT #356 WELL  
 LOCATED 2630 FEET FROM THE NORTH LINE  
 AND 1370 FEET FROM THE WEST LINE OF SECTION 18,  
 TOWNSHIP 19 SOUTH, RANGE 37 EAST, N.M.P.M.,  
 LEA COUNTY, NEW MEXICO.

Survey Date: 01/25/07	Sheet 1 of 1 Sheets
W.O. Number: 07.11.0111	Dr By: AR
Date: 02/05/07	Disk: CD#5
07110111	Scale: 1"=100'



PROVIDING SURVEYING SERVICES  
 SINCE 1946  
**JOHN WEST SURVEYING COMPANY**  
 412 N. DAL PASO  
 HOBBS, N.M. 88240  
 (505) 393-3117

# VICINITY MAP



SCALE: 1" = 2 MILES

SEC. 18 TWP. 19-S RGE. 37-E

SURVEY N.M.P.M.

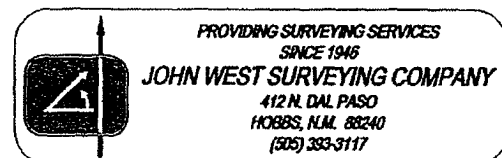
COUNTY LEA STATE NEW MEXICO

DESCRIPTION 2630' FNL & 1370' FWL

ELEVATION 3699'

OPERATOR APACHE CORPORATION

LEASE NMCSA UNIT

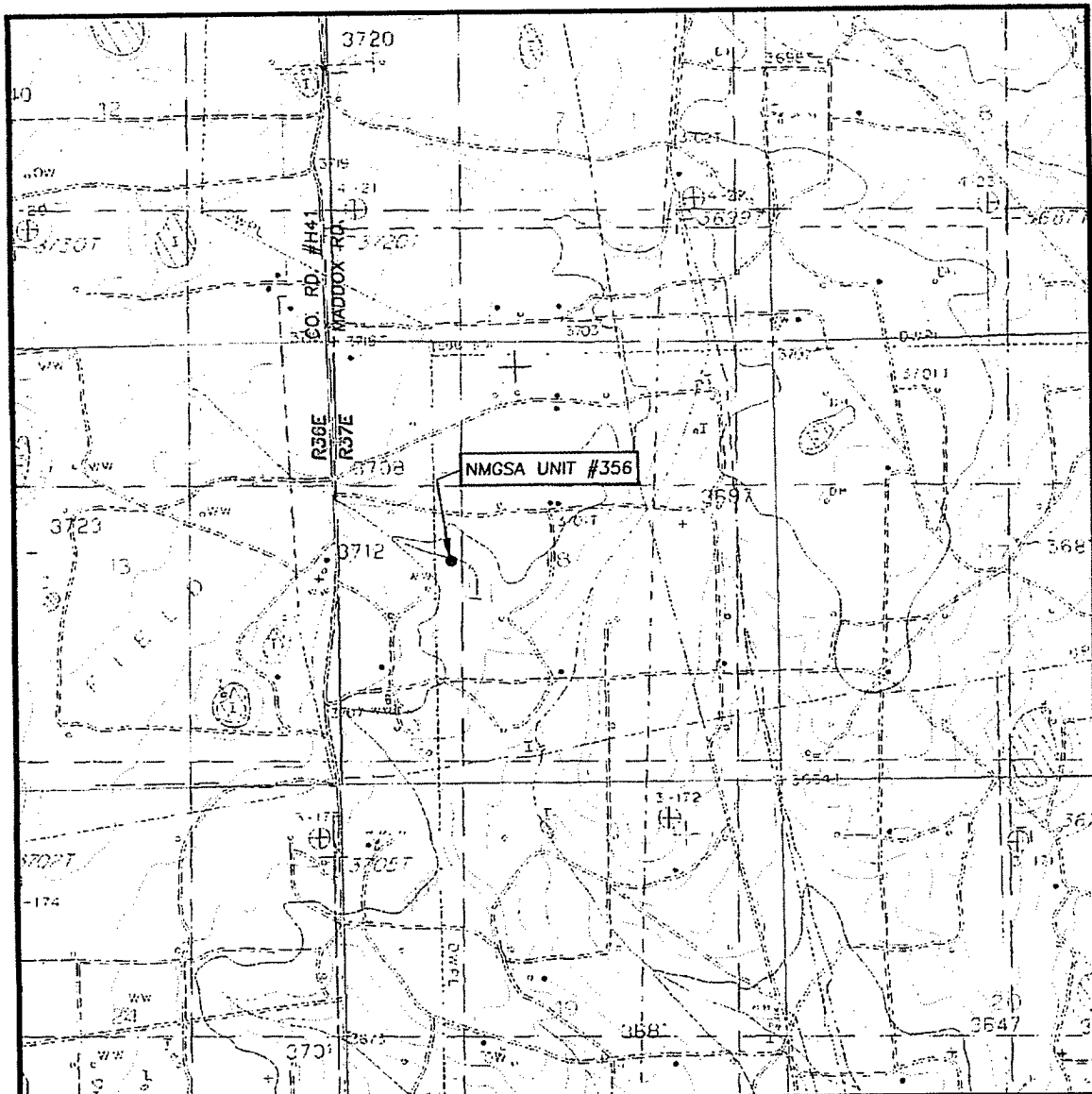


PROVIDING SURVEYING SERVICES  
SINCE 1946

**JOHN WEST SURVEYING COMPANY**

412 N. DAL PASO  
HOBBS, N.M. 88240  
(505) 393-3117

# LOCATION VERIFICATION MAP



SCALE: 1" = 2000'

CONTOUR INTERVAL:  
MONUMENT NORTH, N.M. - 10'  
SUPPLEMENTAL - 5'

SEC. 18 TWP. 19-S RGE. 37-E

SURVEY N.M.P.M.

COUNTY LEA STATE NEW MEXICO

DESCRIPTION 2630' FNL & 1370' FWL

ELEVATION 3699'

OPERATOR APACHE CORPORATION

LEASE NMGSA UNIT

U.S.G.S. TOPOGRAPHIC MAP  
MONUMENT NORTH, N.M.

