

DISTRICT I

1625 N. FRENCH DR., HOHES, NM 86240

DISTRICT II

1301 W. GRAND AVENUE, ARTESIA, NM 88210

DISTRICT III

1000 Elc Brazos Rd., Aztec, NM 87410

DISTRICT IV

1220 S. ST. FRANCIS DR., SANTA FE, NM 87505

State of New Mexico

Energy, Minerals and Natural Resources Department

OIL CONSERVATION DIVISION

1220 SOUTH ST. FRANCIS DR.
Santa Fe, New Mexico 87505

Form C-102

Revised October 12, 2005

Submit to Appropriate District Office

State Lease - 4 Copies

Fee Lease - 3 Copies

WELL LOCATION AND ACREAGE DEDICATION PLAT

☐ AMENDED REPORT

API Number 30-025-38316		Pool Code	Pool Name
Property Code	Property Name NMGSA UNIT		Well Number 362
OGRID No.	Operator Name APACHE CORPORATION		Elevation 3576'

Surface Location

UL or lot No.	Section	Township	Range	Lot Idn	Feet from the	North/South line	Feet from the	East/West line	County
H	2	20-S	36-E		2515	NORTH	10	EAST	LEA

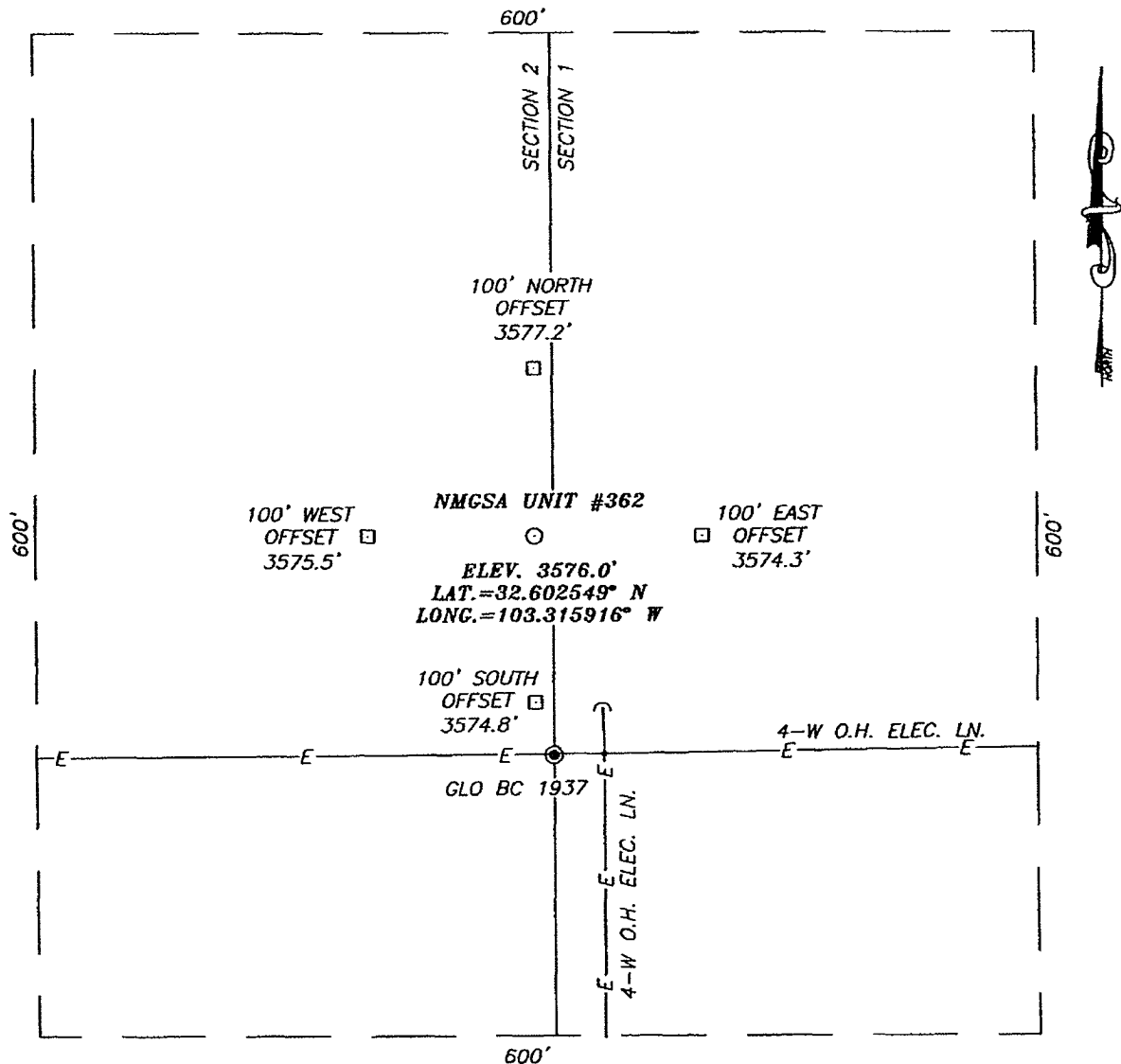
Bottom Hole Location If Different From Surface

UL or lot No.	Section	Township	Range	Lot Idn	Feet from the	North/South line	Feet from the	East/West line	County
Dedicated Acres	Joint or Infill	Consolidation Code	Order No.						

NO ALLOWABLE WILL BE ASSIGNED TO THIS COMPLETION UNTIL ALL INTERESTS HAVE BEEN CONSOLIDATED
OR A NON-STANDARD UNIT HAS BEEN APPROVED BY THE DIVISION

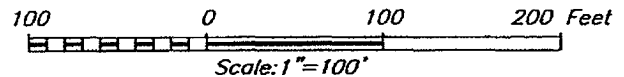
LOT 3	LOT 2	LOT 1	SECTION 2 SECTION 1	LOT 4
<p>GEODETIC COORDINATES NAD 27 NME</p> <p>Y=584417.8 N X=813320.9 E</p> <p>LAT.=32.602549' N LONG.=103.315916' W</p>				
<p>OPERATOR CERTIFICATION</p> <p>I hereby certify that the information herein is true and complete to the best of my knowledge and belief, and that this organization either owns a working interest or unleased mineral interest in the land including the proposed bottom hole location or has a right to drill this well at this location pursuant to a contract with an owner of such mineral or working interest, or to a voluntary pooling agreement or a compulsory pooling order heretofore entered by the division.</p> <p><i>Lana Williams</i> 3/7/07 Signature Date <i>Lana Williams</i> Printed Name</p>				
<p>SURVEYOR CERTIFICATION</p> <p>I hereby certify that the well location shown on this plat was plotted from field notes of actual surveys made by me or under my supervision, and that the same is true and correct to the best of my belief.</p> <p>JANUARY 31, 2007</p> <p>Date Surveyed AR</p> <p>Signature & Seal of Professional Surveyor</p> <p>07.11.0117</p> <p>Certificate No. GARY EIDSON 12041 RONALD J. EIDSON 3239</p>				

SECTION 2, TOWNSHIP 20 SOUTH, RANGE 36 EAST, N.M.P.M.,
 LEA COUNTY, NEW MEXICO



DIRECTIONS TO LOCATION

FROM THE INTERSECTION OF ST. HWY. #322 AND CO. RD. #H41 (MADDOX RD.), GO SOUTH ON MADDOX RD. APPROX. 0.5 MILES. TURN RIGHT AND GO WEST APPROX. 0.2 MILES. VEER LEFT AND GO SOUTHWEST APPROX. 0.3 MILES. THIS LOCATION IS APPROX. 600 FEET WEST.



APACHE CORPORATION

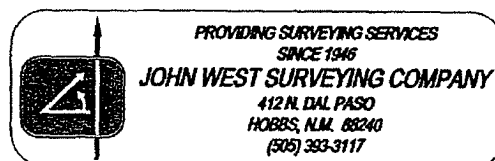
NMGSA UNIT #362 WELL
 LOCATED 2515 FEET FROM THE NORTH LINE
 AND 10 FEET FROM THE EAST LINE OF SECTION 2,
 TOWNSHIP 20 SOUTH, RANGE 36 EAST, N.M.P.M.,
 LEA COUNTY, NEW MEXICO.

Survey Date: 01/31/07	Sheet 1 of 1 Sheets
W.O. Number: 07.11.0117	Dr By: AR
Date: 02/02/07	Rev 1: N/A
Disk: CD#5	07110117
	Scale: 1"=100'

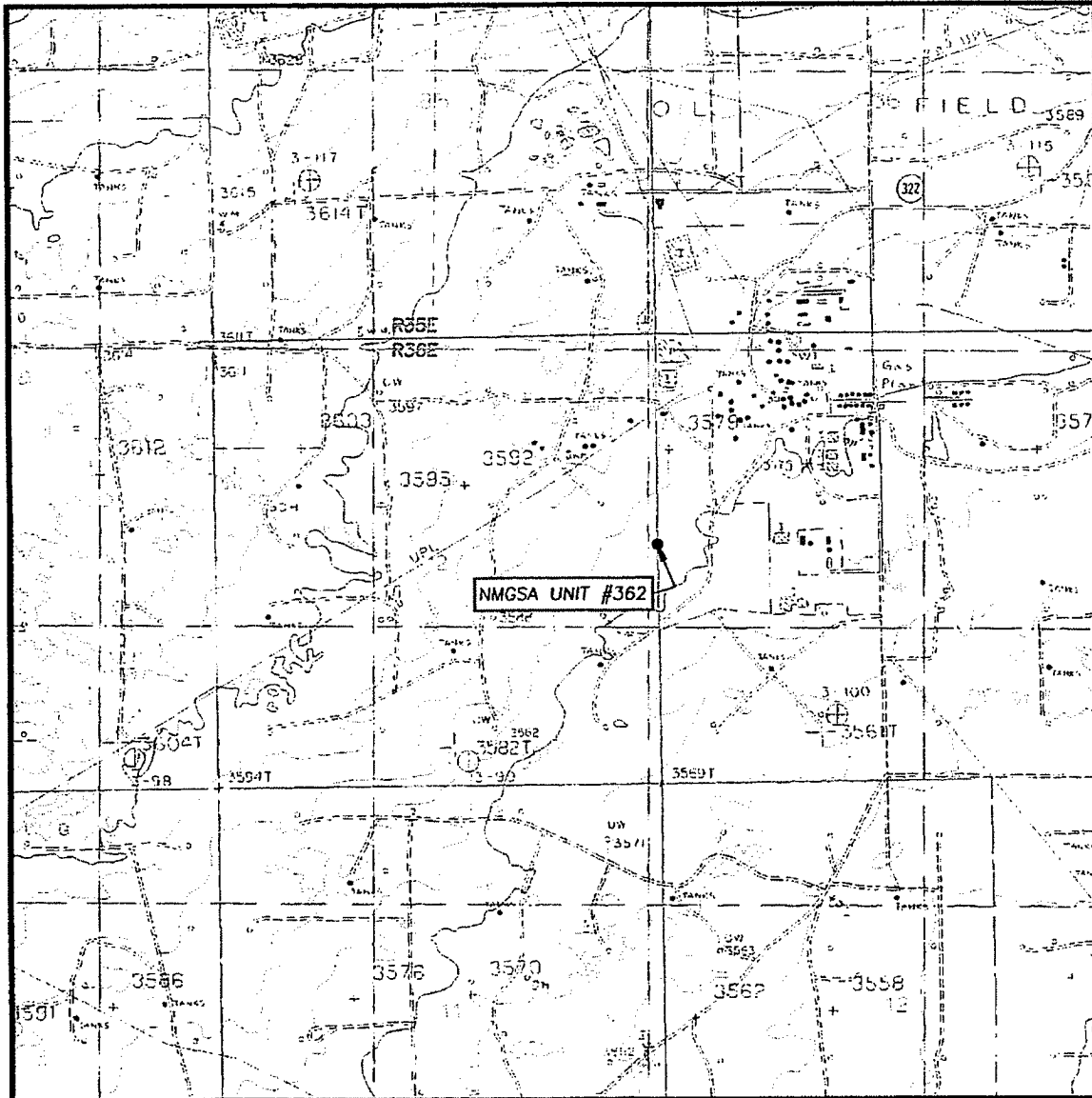
PROVIDING SURVEYING SERVICES
 SINCE 1946
JOHN WEST SURVEYING COMPANY
 412 N. DAL PASO
 HOBBS, N.M. 88240
 (505) 393-3117

[illegible]

SEC. 2 TWP. 20-S RGE. 36-E
SURVEY _____ N.M.P.M. _____
COUNTY LEA STATE NEW MEXICO
DESCRIPTION 2515' FNL & 10' FEL
ELEVATION _____ 3576' _____
OPERATOR APACHE CORPORATION
LEASE _____ NMGSA UNIT



LOCATION VERIFICATION MAP



SCALE: 1" = 2000'

CONTOUR INTERVAL:
MONUMENT SOUTH, N.M. - 5'

SEC. 2 TWP. 20-S RGE. 36-E

SURVEY N.M.P.M.

COUNTY LEA STATE NEW MEXICO

DESCRIPTION 2515' FNL & 10' FEL

ELEVATION 3576'

OPERATOR APACHE CORPORATION

LEASE NMGSA UNIT

U.S.G.S. TOPOGRAPHIC MAP
MONUMENT SOUTH, N.M.

