

1625 N. FRENCH DR., HOBBS, NM 88240

State of New Mexico
Energy, Minerals and Natural Resources Department

Form C-102

DISTRICT II

1301 W. GRAND AVENUE, ARTESIA, NM 88210

OIL CONSERVATION DIVISION
1220 SOUTH ST. FRANCIS DR.
Santa Fe, New Mexico 87505

Revised October 12, 2005
Submit to Appropriate District Office
State Lease - 4 Copies
Fee Lease - 3 Copies

DISTRICT III

1000 Rio Brazos Rd., Aztec, NM 87410

DISTRICT IV

1220 S. ST. FRANCIS DR., SANTA FE, NM 87505

WELL LOCATION AND ACREAGE DEDICATION PLAT

☐ AMENDED REPORT

API Number 30-025-38127	Pool Code 22900	Pool Name Eunice; Blinebry-Tubb-Drinkard, North
Property Code 36023	Property Name HAWK A-4	Well Number 4
OGRID No. 873	Operator Name APACHE CORPORATION	Elevation 3480'

Surface Location

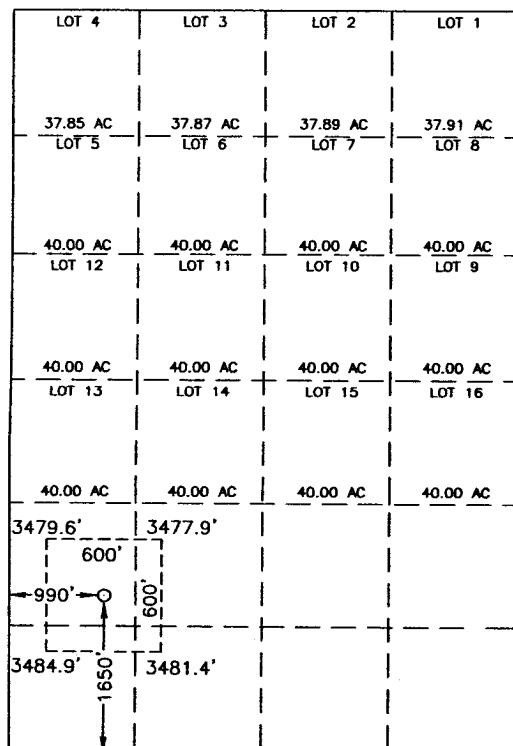
UL or lot No.	Section	Township	Range	Lot Idn	Feet from the	North/South line	Feet from the	East/West line	County
L	4	21-S	37-E		1650	SOUTH	990	WEST	LEA

Bottom Hole Location If Different From Surface

UL or lot No.	Section	Township	Range	Lot Idn	Feet from the	North/South line	Feet from the	East/West line	County
---------------	---------	----------	-------	---------	---------------	------------------	---------------	----------------	--------

Dedicated Acres	Joint or Infill	Consolidation Code	Order No.
40			

NO ALLOWABLE WILL BE ASSIGNED TO THIS COMPLETION UNTIL ALL INTERESTS HAVE BEEN CONSOLIDATED
OR A NON-STANDARD UNIT HAS BEEN APPROVED BY THE DIVISION



GEODETIC COORDINATES
NAD 27 NME

Y=549418.4 N
X=857750.8 E

LAT.=32.505109° N
LONG.=103.172906° W

LAT.=32°30'18.39" N
LONG.=103°10'22.46" W

2000 0 2000 4000 Feet

Scale: 1"=2000'

OPERATOR CERTIFICATION

I hereby certify that the information herein is true and complete to the best of my knowledge and belief, and that this organization either owns a working interest or unleased mineral interest in the land including the proposed bottom hole location or has a right to drill this well at this location pursuant to a contract with an owner of such mineral or working interest, or to a voluntary pooling agreement or a compulsory pooling order heretofore entered by the division.

S. Mackay 12/29/2006
Signature Date
Sophie Mackay
Printed Name

SURVEYOR CERTIFICATION

I hereby certify that the well location shown on this plat was plotted from field notes of actual surveys made by me or under my supervision, and that the same is true and correct to the best of my belief.

JUNE 12, 2006

Date Surveyed _____ MR _____
Signature & Seal of _____
Professional Surveyor _____

Ronald J. Eudora 6/22/06

Certificate No. GARY EIDSON 12641
RONALD J. EIDSON 3238