

District I
1625 N. French Dr., Hobbs, NM 88240
District II
1301 W. Grand Avenue, Artesia, NM 88210
District III
1000 Rio Brazos Road, Aztec, NM 87410
District IV
1220 S. St. Francis Dr., Santa Fe, NM 87505

State of New Mexico
Energy Minerals and Natural Resources

Oil Conservation Division
1220 South St. Francis Dr.
Santa Fe, NM 87505

Form C-144
June 1, 2004

For drilling and production facilities, submit to appropriate NMOCD District Office.
For downstream facilities, submit to Santa Fe office

Pit or Below-Grade Tank Registration or Closure

Is pit or below-grade tank covered by a "general plan"? Yes ☒ No ☐

Type of action: Registration of a pit or below-grade tank ☐ Closure of a pit or below-grade tank ☒

Operator: Yates Petroleum Corporation Telephone: 505-748-4500 e-mail address: mikes@ypcnm.com

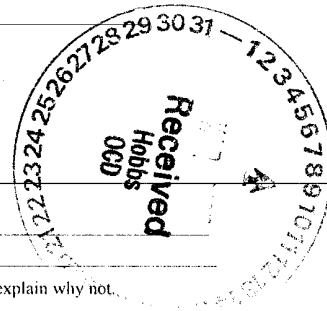
Address: 105 South 4th Street, Artesia, N.M. 88210

38527

Facility or well name Belco AIA Federal #2H API #: 30-025-2034 U/L or Qtr/Qtr M Sec 14 T 20S R 32E

County: Lea Latitude: 32.56674 Longitude: 103.74167 NAD: 1927 ☒ 1983 ☐

Surface Owner: Federal ☒ State ☐ Private ☐ Indian ☐



Pit

Type: Drilling ☒ Production ☐ Disposal ☐

Work over ☐ Emergency ☐

Lined ☒ Unlined ☐

Liner type: Synthetic ☒ Thickness 12 mil Clay ☐

Pit Volume 24,000 bbl

Below-grade tank

Volume: _____ bbl Type of fluid: _____

Construction material: _____

Double-walled, with leak detection? Yes ☐ If not, explain why not: _____

Depth to ground water (vertical distance from bottom of pit to seasonal high water elevation of ground water.)

Less than 50 feet
50 feet or more, but less than 100 feet
100 feet or more

(20 points) XXXX
(10 points)
(0 points)

Wellhead protection area: (Less than 200 feet from a private domestic water source, or less than 1000 feet from all other water sources.)

Yes
No

(20 points)
(0 points) XXXX

Distance to surface water: (horizontal distance to all wetlands, playas, irrigation canals, ditches, and perennial and ephemeral watercourses.)

Less than 200 feet
200 feet or more, but less than 1000 feet
1000 feet or more

(20 points)
(10 points)
(0 points) XXXX

Ranking Score (Total Points)

20 points

If this is a pit closure: (1) Attach a diagram of the facility showing the pit's relationship to other equipment and tanks. (2) Indicate disposal location: (check the onsite box if you are burying in place)

onsite ☒ offsite ☐ If offsite, name of facility NA (3) Attach a general description of remedial action taken including remediation start date and end date. (4) Groundwater encountered: No ☐ Yes ☐ If yes, show depth below ground surface _____ ft. and attach sample results.

(5) Attach soil sample results and a diagram of sample locations and excavations.

Additional Comments: Registration for encapsulation trench. An encapsulation trench will be constructed and lined with 12 mil synthetic liner next to existing drilling pit. The drilling pit contents will be excavated and emplaced into the encapsulation trench using a mixture of three to one pit material and Class H bulk cement or CKD. The emulsion of pit material and cement will be mixed using a track hoe and water added if needed. After completion of solidifying pit material in cement and pit contents have set in place for a minimum of 24 hours, the encapsulation trench will then be capped using a 20 mil synthetic liner placed over the pit contents with a minimum of a 3' over lap of the underlying trench areas. The trench will then be backfilled to grade using a minimum of 3' of clean soil or like material. A one call and 48 hour notification to OCD will be made before pit closure action begins. Beginning pit closure date: N/A. Ending pit closure date: N/A

I hereby certify that the information above is true and complete to the best of my knowledge and belief. I further certify that the above-described pit or below-grade tank has been/will be constructed or closed according to NMOCD guidelines ☐, a general permit ☒, or an (attached) alternative OCD-approved plan ☐.

Date: 03/07/2007

Printed Name/Title Mike Stubblefield / Environmental Regulatory Agent

Signature *Mike Stubblefield*

Your certification and NMOCD approval of this application/closure does not relieve the operator of liability should the contents of the pit or tank contaminate ground water or otherwise endanger public health or the environment. Nor does it relieve the operator of its responsibility for compliance with any other federal, state, or local laws and/or regulations.

Approval:

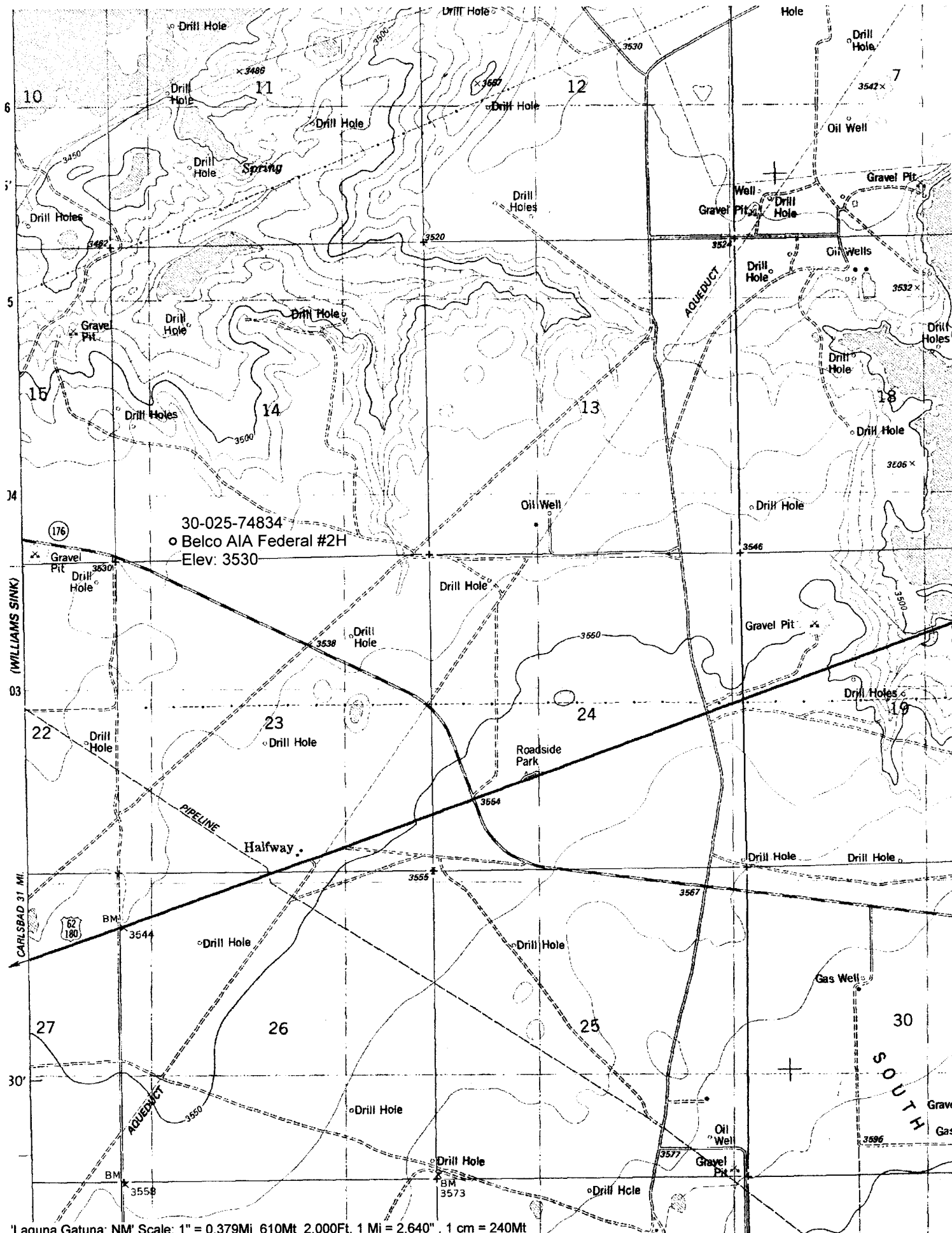
Printed Name/Title GARY W. WINK / STAFF MGR. Signature *Gary W. Wink*

Date: 3/16/07

USGS SEO TWN 19S-26S CHAVES LEA GW

BELCO AIA FEDERAL #2H
30-025-38527

	A	B	C	D	E	F	G	H	I	J	K	L
3	UL	SEC	TWN	RNG	SPOT	COUNTY	SOURCE	USGS SITE NUM.	QTY	SITE LOCATION	DATE	LEVEL
1171	M	23	20S	32E	33132	LEA	SEO		1	20S.32E.23.33132	1981-02-19	39.83
1172	O	23	20S	32E	43312	LEA	USGS	323258103440601	6	20S.32E.23.43312	1968-05-29	39.40
1173	O	23	20S	32E	43312	LEA	USGS	323258103440601	6	20S.32E.23.43312	1971-02-02	37.46
1174	O	23	20S	32E	43312	LEA	USGS	323258103440601	6	20S.32E.23.43312	1981-02-19	36.78
1175	O	23	20S	32E	43312	LEA	USGS	323258103440601	6	20S.32E.23.43312	1986-04-07	38.42
1176	O	23	20S	32E	43312	LEA	USGS	323258103440601	6	20S.32E.23.43312	1991-05-23	39.37
1177	O	23	20S	32E	43312	LEA	USGS	323258103440601	6	20S.32E.23.43312	1996-01-30	39.83
1178	O	23	20S	32E	43312 A	LEA	SEO		1	20S.32E.23.43312 A	1981-02-19	37.63



'Laguna Gatuna; NM' Scale: 1" = 0.379Mi 610Mt 2,000Ft, 1 Mi = 2.640", 1 cm = 240Mt