

District I
1625 N. French Dr., Hobbs, NM 88240
Phone:(505) 393-6161 Fax:(505) 393-0720

Form C-101
Permit 44876

State of New Mexico
Energy, Minerals and Natural Resources
Oil Conservation Division
1220 S. St Francis Dr.
Santa Fe, NM 87505

APPLICATION FOR PERMIT TO DRILL, RE-ENTER, DEEPEN, PLUGBACK, OR ADD A ZONE

1. Operator Name and Address APACHE CORP 6120 S. YALE TULSA, OK 74136		2. OGRID Number 873
4. Property Code 23112		3. API Number 38540 30-025- 38280
5. Property Name SOUTHLAND ROYALTY A		6. Well No. 032

7. Surface Location

UL - Lot	Section	Township	Range	Lot Idn	Feet From	N/S Line	Feet From	E/W Line	County
N	4	21S	37E	N	145	S	1460	W	LEA

8. Pool Information

BLINEBRY OIL AND GAS (OIL)	6660
TUBB OIL AND GAS (OIL)	60240
DRINKARD	19190

Additional Well Information

9. Work Type New Well	10. Well Type OIL	11. Cable/Rotary	12. Lease Type Private	13. Ground Level Elevation 3487
14. Multiple Y	15. Proposed Depth	16. Formation Drinkard	17. Contractor	18. Spud Date 2/26/2007
Depth to Ground water 47		Distance from nearest fresh water well		Distance to nearest surface water
Pit: Liner: Synthetic <input type="checkbox"/> mils thick Clay <input type="checkbox"/> Pit Volume: bbls Drilling Method: Closed Loop System <input checked="" type="checkbox"/> Fresh Water <input type="checkbox"/> Brine <input type="checkbox"/> Diesel/Oil-based <input type="checkbox"/> Gas/Air <input type="checkbox"/>				

19. Proposed Casing and Cement Program

Type	Hole Size	Casing Type	Casing Weight/ft	Setting Depth	Sacks of Cement	Estimated TOC
Surf	12.25	8.625	24	1300	575	0
Prod	7.875	5.5	17	7000	1250	0

Casing/Cement Program: Additional Comments

--

Proposed Blowout Prevention Program

Type	Working Pressure	Test Pressure	Manufacturer
DoubleRam	2000	3000	

I hereby certify that the information given above is true and complete to the best of my knowledge and belief. I further certify that the drilling pit will be constructed according to NMOCD guidelines <input type="checkbox"/> , a general permit <input type="checkbox"/> , or an (attached) alternative OCD-approved plan <input type="checkbox"/> . Printed Name: Electronically filed by Lana Williams Title: Sr. Department Clerk Email Address: lana.williams@apachecorp.com Date: 1/16/2007 Phone: 918-491-4900	OIL CONSERVATION DIVISION Approved By: Chris Williams Title: District Supervisor Approved Date: 2/13/2007 Expiration Date: 2/13/2008 Conditions of Approval Attached
---	--

DISTRICT I
1025 N. FRANCH DR., BOBBS, NM 88240

DISTRICT II
1301 W. GRAND AVENUE, ARTESIA, NM 88210

DISTRICT III
1000 Rio Brazos Rd., Aztec, NM 87410

DISTRICT IV
1220 S. ST. FRANCIS DR., SANTA FE, NM 87505

State of New Mexico
Energy, Minerals and Natural Resources Department

OIL CONSERVATION DIVISION
1220 SOUTH ST. FRANCIS DR.
Santa Fe, New Mexico 87505

Form C-102
Revised JUNE 10, 2003
Submit to Appropriate District Office
State Lease - 4 Copies
Fee Lease - 3 Copies

WELL LOCATION AND ACREAGE DEDICATION PLAT

☐ AMENDED REPORT

API Number 30-025-38540	Pool Code 22900	Pool Name NEunice Blinebry-Tubb-Drinkard
Property Code 23112	Property Name SOUTHLAND ROYALTY A	Well Number 32
OGRID No. 873	Operator Name APACHE CORPORATION	Elevation 3487'

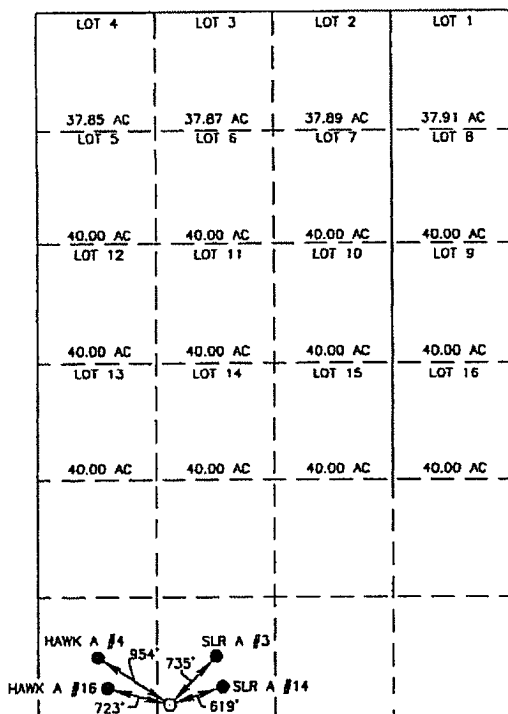
Surface Location

UL or lot No.	Section	Township	Range	Lot Idn	Feet from the	North/South line	Feet from the	East/West line	County
N	4	21-S	37-E		145	SOUTH	1460	WEST	LEA

Bottom Hole Location If Different From Surface

UL or lot No.	Section	Township	Range	Lot Idn	Feet from the	North/South line	Feet from the	East/West line	County
Dedicated Acres 40	Joint or Infill	Consolidation Code	Order No. NSL-5500						

NO ALLOWABLE WILL BE ASSIGNED TO THIS COMPLETION UNTIL ALL INTERESTS HAVE BEEN CONSOLIDATED
OR A NON-STANDARD UNIT HAS BEEN APPROVED BY THE DIVISION



2000 0 2000 4000 Feet
Scale: 1"=2000'

OPERATOR CERTIFICATION

I hereby certify the the information
contained herein is true and complete to the
best of my knowledge and belief.

Lara Williams
Signature

Lara Williams
Printed Name

Engr. Tech
Title

1/16/07
Date

SURVEYOR CERTIFICATION

I hereby certify that the well location shown
on this plat was plotted from field notes of
actual surveys made by me or under my
supervision and that the same is true and
correct to the best of my belief.

JANUARY 6, 2006

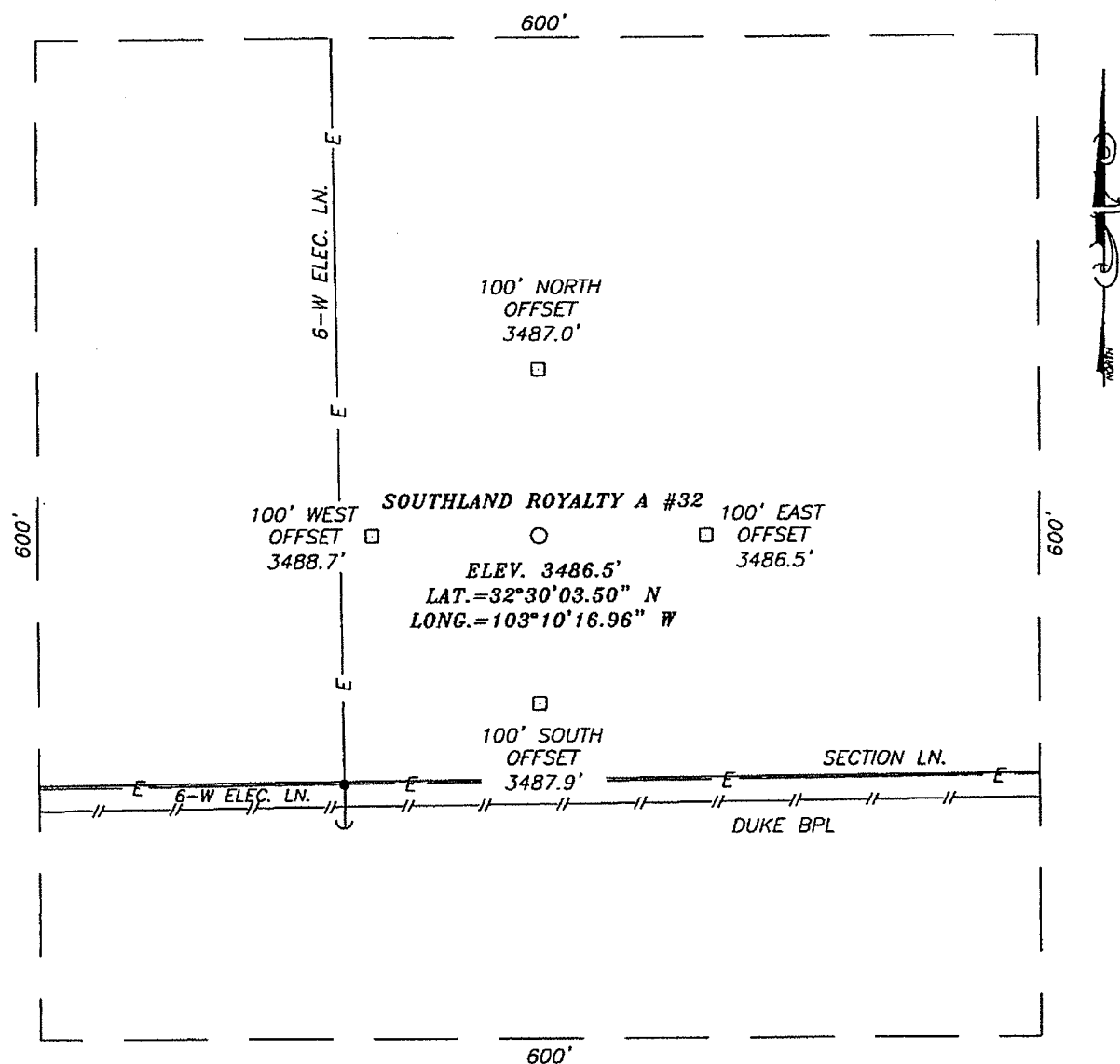
Date Surveyed JR

Signature & Seal of
Professional Surveyor

06.11.0024

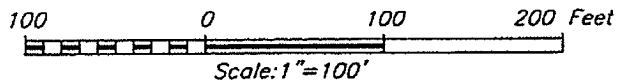
Certificate No. GARY EIDSON 12641

SECTION 4, TOWNSHIP 21 SOUTH, RANGE 37 EAST, N.M.P.M.,
LEA COUNTY, NEW MEXICO



DIRECTIONS TO LOCATION

FROM THE INTERSECTION OF ST. HWY. #207 AND CO. RD. E-34 (DECK RD.) GO WEST ON CO. RD. E-34 APPROX. 0.3 MILES. TURN RIGHT (NORTH) AND GO APPROX. 0.2 MILES. TURN LEFT (NW) AND GO APPROX. 0.4 MILES. TURN RIGHT AND GO APPROX. 300'. THIS LOCATION IS APPROX. 400' NE.

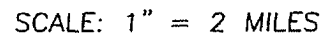
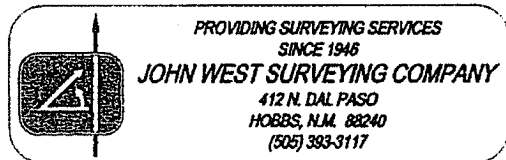


APACHE CORPORATION

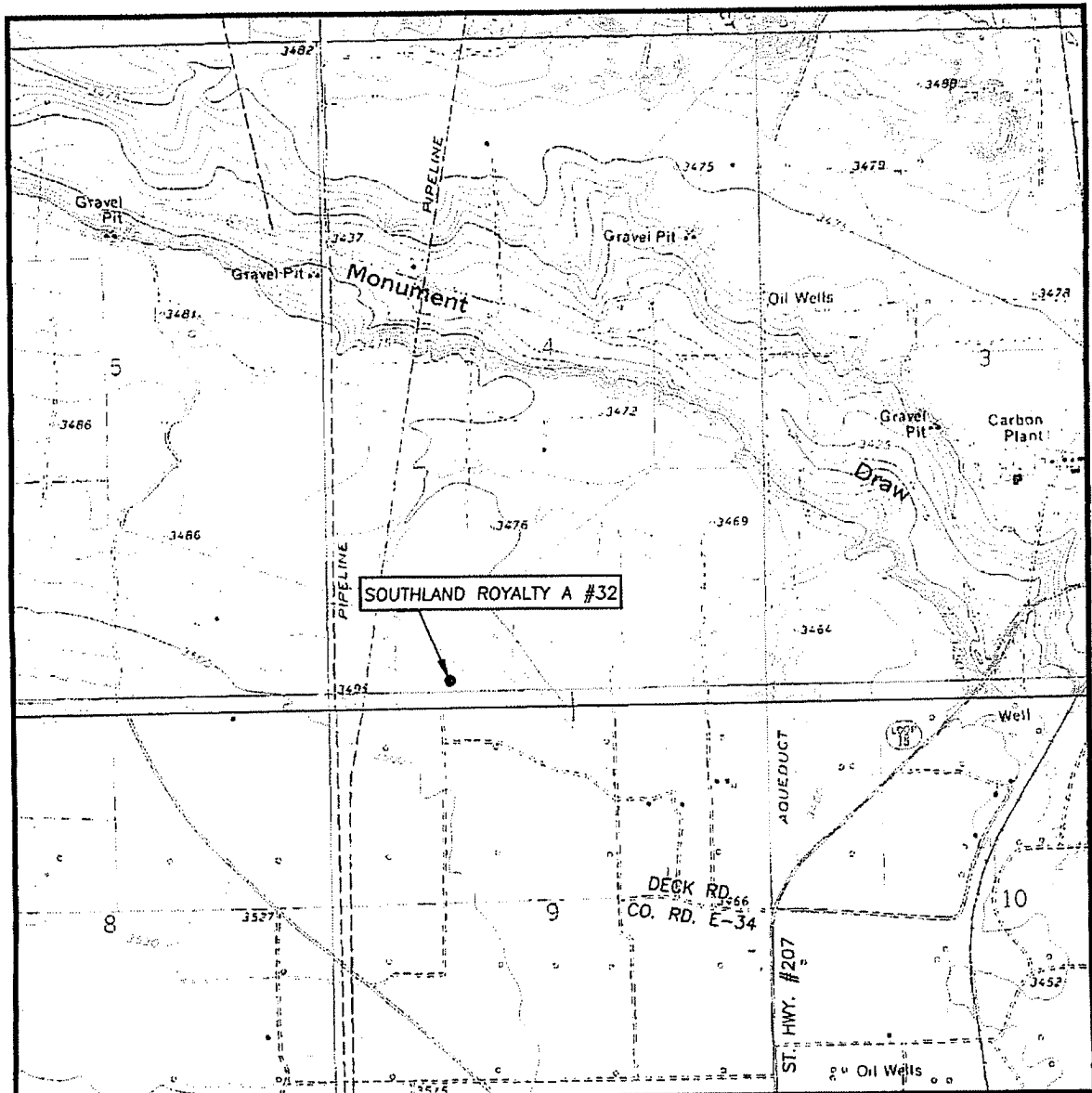
SOUTHLAND ROYALTY A #32 WELL
LOCATED 145 FEET FROM THE SOUTH LINE
AND 1460 FEET FROM THE WEST LINE OF SECTION 4,
TOWNSHIP 21 SOUTH, RANGE 37 EAST, N.M.P.M.,
LEA COUNTY, NEW MEXICO.

Survey Date: 1/06/06	Sheet 1 of 1 Sheets
W.O. Number: 06.11.0024	Dr By: J.R.
Date: 1/13/06	Disk: CD#6
06110024	Scale: 1"=100'

PROVIDING SURVEYING SERVICES
SINCE 1946
JOHN WEST SURVEYING COMPANY
412 N. DAL PASO
HOBBS, N.M. 88240
(505) 393-3117

LEASE SOUTHLAND ROYALTY A

LOCATION VERIFICATION MAP



SCALE: 1" = 2000'

CONTOUR INTERVAL:
HOBBS SW, N.M. - 5'
EUNICE, N.M. - 5'

SEC. 4 TWP. 21-S RGE. 37-E

SURVEY N.M.P.M.

COUNTY LEA

DESCRIPTION 145' FSL & 1460' FWL

ELEVATION 3487'

OPERATOR APACHE CORPORATION

LEASE SOUTHLAND ROYALTY A

U.S.G.S. TOPOGRAPHIC MAP

HOBBS SW, N.M.

