

Submit 3 Copies To Appropriate District
Office
District I
1625 N. French Dr., Hobbs, NM 88240
District II
1301 W. Grand Ave., Artesia, NM 88210
District III
1000 Rio Brazos Rd., Aztec, NM 87410
District IV
1220 S. St. Francis Dr., Santa Fe, NM
87505

State of New Mexico
Energy, Minerals and Natural Resources

Form C-103
May 27, 2004

OIL CONSERVATION DIVISION
1220 South St. Francis Dr.
Santa Fe, NM 87505

WELL API NO. 30-025-09004
5. Indicate Type of Lease STATE <input type="checkbox"/> FEE <input checked="" type="checkbox"/>
6. State Oil & Gas Lease No. 025432
7. Lease Name or Unit Agreement Name South Eunice Unit
8. Well Number 6
9. OGRID Number 002799
10. Pool name or Wildcat Eunice 7 Rivers Queen, South

SUNDRY NOTICES AND REPORTS ON WELLS
(DO NOT USE THIS FORM FOR PROPOSALS TO DRILL OR TO DEEPEN OR PLUG BACK TO A
DIFFERENT RESERVOIR. USE "APPLICATION FOR PERMIT" (FORM C-101) FOR SUCH
PROPOSALS.)

1. Type of Well: Oil Well ☐ Gas Well ☒ Other INJECTION

2. Name of Operator
Breck Operating Corp.

3. Address of Operator
P.O. Box 911, Breckenridge, Texas 7624

4. Well Location

Unit Letter B : 660 feet from the North line and 1980 feet from the East line
Section 22 Township 22S Range 36E NMPM Lea County

11. Elevation (Show whether DR, RKB, RT, GR, etc.)
3535' GR

Pit or Below-grade Tank Application ☐ or Closure ☐

Pit type Steel Depth to Groundwater 199' Distance from nearest fresh water well >1000' Distance from nearest surface water >1000'

Pit Liner Thickness: mil Below-Grade Tank: Volume bbls; Construction Material

12. Check Appropriate Box to Indicate Nature of Notice, Report or Other Data

NOTICE OF INTENTION TO:

PERFORM REMEDIAL WORK ☐ PLUG AND ABANDON ☒
TEMPORARILY ABANDON ☐ CHANGE PLANS ☐
PULL OR ALTER CASING ☐ MULTIPLE COMPL ☐

OTHER: ☐

SUBSEQUENT REPORT OF:

REMEDIAL WORK ☐ ALTERING CASING ☐
COMMENCE DRILLING OPNS. ☐ P AND A ☐
CASING/CEMENT JOB ☐

OTHER: ☐

13. Describe proposed or completed operations. (Clearly state all pertinent details, and give pertinent dates, including estimated date of starting any proposed work). SEE RULE 1103. For Multiple Completions: Attach wellbore diagram of proposed completion or recompletion.

Current Well Status

1. 8-5/8" csg @ 352', cement circ.
2. 5-1/2" csg @ 3872', TOC 1340' TS
3. Perfs 3686'-3798'
4. PBDT CIBP @ 3635' w/30' cement

Proposed Plugging Procedure

1. Circ w/mud
2. 100' plug 3000'-2900' & tag
3. 100' plug 1240'-1140' & tag
4. 100' shoe plug 402'-302' & tag
5. Surface plug 60'-0'
6. Install dry hole marker
7. Clean location

PERF + SQZ 50' OUT IN WCT
TAG
PERF + SQZ 50' OUT IN WCT + TAG

THE OIL CONSERVATION DIVISION MUST
BE NOTIFIED 24 HOURS PRIOR TO THE
BEGINNING OF PLUGGING OPERATIONS.

I hereby certify that the information above is true and complete to the best of my knowledge and belief. I further certify that any pit or below-grade tank has been/will be constructed or closed according to NMOC guidelines ☐, a general permit ☐ or an (attached) alternative OCD-approved plan ☐.

SIGNATURE Ernie Underwood TITLE District Engineer DATE March 29, 2007

Type or print name Ernie Underwood E-mail address: eunderwood@breckop.com Telephone No. 254-559-3355

For State Use Only

APPROVED BY: Harry W. Wink TITLE DATE

Conditions of Approval (if any):

PLUGGING & ABANDONMENT WORKSHEET

(2 STRING CSNG)

OPERATOR Breck Operating Corp

LEASENAME South Eugene Unit

WELL # 6

SECT 22 TWN 22S RNG 36E

FROM 66' NSL 1980 EWL

TD: 3872' FORMATION @ TD 7R5 Queen

PBTD: 3605' FORMATION @ PBTD

8 7/8"
@ 352'
TOC Surface

5 1/2"
@ 3872'
TOC 1340'

5 1/2"
@ 3872'
TOC 1340'

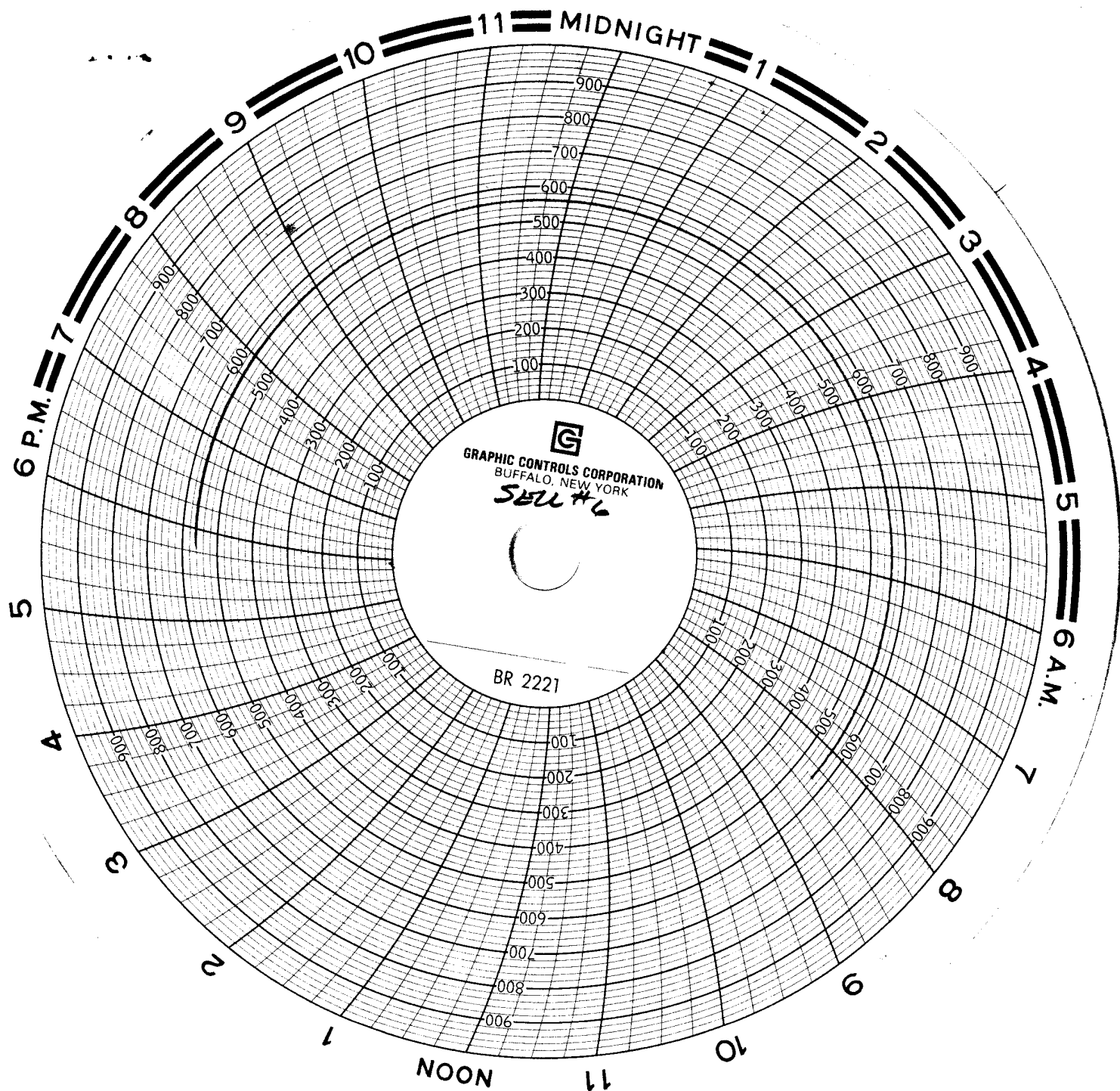
TD 3872'

	SIZE	SET @	TOC	TOC DETERMINED BY
SURFACE	8 7/8"	352'	Surface	CUC
INTMED 1				
INTMED 2				
PROD	5 1/2"	3872'	1340'	Temp Survey
	SIZE	TOP	BOT	TOC DETERMINED BY
LINER 1				
LINER 2				
	CUT & PULL @		TOP - BOTTOM	
INTMED 1			PERFS	3686' - 3798'
INTMED 2			OPENHOLE	"
PROD				

*REQUIRED PLUGS DISTRICT I

RUTLER (ANYTD)	1187'
YATES	3218'
QUEEN	3812'
GRAYBURG	
SAN ANDRES	
CAPTAN REEF	
DELAWARE	
BELL CANYON	
CHERRY CANYON	
BRUNY CANYON	
BONE SPRING	
GLORIETA	
BLISSKEY	
TUBS	
ORDEKARD	
ABO	
WC	
PENN	
STRAWN	
ATOCIA	
MORROW	
MISS	
DEVONIAN	

PLUG	TYPE	SACKS	DEPTH
PLUG	PLUG	CMNT	
PLUG#1	OH	35 SXS	6400'
PLUG#2	SHOE	50 SXS	5350'-5450'
PLUG#3	CIRP/35'		4800'
PLUG#4	CIRP	25 SXS	4800'
PLUG#5	STUB	50 SXS	3600'-3700'
PLUG#6	RETNR SQZ	200 SXS	400'
PLUG#7	SURF	10 SXS	0-10'
PLUG#8		25 SXS	300'-320' Tag
PLUG#9		25 SXS	1340'-1140' Tag
PLUG#10	Shoe	25 SXS	402'-302' Tag
PLUG#11	Surf	15 SXS	100'-0'
PLUG#12			
PLUG#13			
PLUG#14			
PLUG#15			
PLUG#16			
PLUG#17			
PLUG#18			
PLUG#19			
PLUG#20			



BECK OPERATING
SOUTH EUNICE UNIT #6 (TA)
03-19-07

SERGEANT ZAMBRANO
KEY #412
TEL #0108207-1307157

LST. CAL. 11116106

TB O PSE (TA)

SURFACE O PSE

CASING O PSE

[Signature]
B. Pierce