

DISTRICT I

P.O. Box 1980, Hobbs, NM 88241-1980

DISTRICT II

P.O. Box Drawer DD, Artesia, NM 88211-0719

DISTRICT III

1000 Rio Brazos Rd., Aztec, NM 87410

DISTRICT IV

P.O. Box 2088, Santa Fe, NM 87504-2088

State of New Mexico

Energy, Minerals and Natural Resources Department

OIL CONSERVATION DIVISION

P.O. Box 2088

Santa Fe, New Mexico 87504-2088

Form C-101

Revised February 10, 1999

Instructions on back

Submit to Appropriate District Office

State Lease - 6 Copie

Fee Lease - 5 Copie

☐ AMENDED REPORT

APPLICATION FOR PERMIT TO DRILL, RE-ENTER, DEEPEN, PLUGBACK, OR ADD A ZONE

¹ Operator Name and Address CHEVRON USA INC 15 SMITH RD, MIDLAND, TX 79705		² OGRID Number 4323 ✓
		³ API Number 30-025-34191 ✓
⁴ Property Code 18927	⁵ Property Name MONUMENT '12' STATE	⁶ Well No. 14 ✓

⁷ Surface Location									
Ul or lot no.	Section	Township	Range	Lot.Idn	Feet From The	North/South Line	Feet From The	East/West Line	County
C	12	19-S	36-E		1200'	NORTH	1350'	WEST	LEA ✓

⁸ Proposed Bottom Hole Location If Different From Surface									
Ul or lot no.	Section	Township	Range	Lot.Idn	Feet From The	North/South Line	Feet From The	East/West Line	County
⁹ Proposed Pool 1 MONUMENT; DRINKARD NORTH (GAS)					¹⁰ Proposed Pool 2				

¹¹ Work Type Code P	¹² WellType Code G	¹³ Rotary or C.T. ROTARY	¹⁴ Lease Type Code S	¹⁵ Ground Level Elevation 3741' GL
¹⁶ Multiple No	¹⁷ Proposed Depth 7005'	¹⁸ Formation DRINKARD	¹⁹ Contractor	²⁰ Spud Date

²¹ Proposed Casing and Cement Program					
SIZE OF HOLE	SIZE OF CASING	WEIGHT PER FOOT	SETTING DEPTH	SACKS OF CEMENT	EST. TOP
NO CHANGE					

²² Describe the proposed program. If this application is to DEEPEN or PLUG BACK give the data on the present productive zone and proposed new productive zone.
Describe the blowout prevention program, if any. Use additional sheets if necessary.

CHEVRON U.S.A. INC. INTENDS TO RECOMPLETE THE SUBJECT WELL FROM THE ABO POOL TO THE DRINKARD RESERVOIR (GAS)

A PIT WILL NOT BE USED FOR THIS RECOMPLETION. A STEEL FRAC TANK WILL BE UTILIZED.

THE INTENDED PROCEDURE, & CURRENT & PROPOSED WELLBORE DIAGRAMS ARE ATTACHED FOR YOUR APPROVAL.

Permit Expires 1 Year From Approval

Date Unless Drilling Underway

Plug back

²³ I hereby certify that the rules and regulations of the Oil Conservation Division have been complied with and that the information given above is true and complete to the best of my knowledge and belief.		OIL CONSERVATION DIVISION	
Signature <i>Denise Pinkerton</i>		Approved By: <i>Chris Williams</i>	
Printed Name Denise Pinkerton		Title: OC DISTRICT SUPERVISOR/GENERAL MANAGER	
Title Regulatory Specialist		Approval Date: APR 18 2007 Expiration Date:	
Date 4/10/2007	Telephone 432-687-7375	Conditions of Approval: Attached <input type="checkbox"/>	

Monument 12 State # 14
Monument North
T19S, R36E, Section 13
Job: PB to Drinkard

03/21/2007

Procedure:

1. *This procedure is based on the most recent information regarding wellbore configuration and equipment that could be found in the Midland Office well files and computer databases as of 3/21/2007. Verify what is in the hole with the well file in the Eunice Field office. Discuss w/ WEO Engineer, Workover Rep, OS, ALS, and FS prior to rigging up on well regarding any hazards or unknown issues pertaining to the well.*
2. Displace flowline with fresh water. Have field specialist close valve at header. Pressure line according to the type of line. Buried fiberglass lines will be tested with 300 psi. All polypipe (SDR7 and SDR11) will be tested w/100 psi. All steel lines will be tested w/500 psi. If a leak is found, contact Donnie Ives for repair/replacement. If test is good, bleed off pressure and **open valve** at header. Document this process in the morning report.
3. **Review SOP & JSA for slip-type wellhead w/ < 300' of tubing.** MI & RU workover unit. Bleed pressure from well, if any. Nipple down WH. Install BOP's and test as required. POH and LD 1 jt. of 2-7/8" tbg. Test BOP, WH, and 5-1/2" csg to 500 psi.
4. PU and GIH with 4-3/4" bit and 2-7/8" **WS** as needed to 7100'. Reverse circulate well clean from 7100' using 8.6 PPG cut brine water. POH with tbg string and bit. LD bit.
5. Install lubricator and test to 2000 psi. GIH with 3-1/8" **slick guns** and perforate the following intervals with **4 JSPF at 120 degree phasing using 23 gram** premium charges:

Top Perf	Bottom Perf	Net Feet	Total Holes
6900	6910	10	40
6913	6923	10	40
6926	6936	10	40
6939	6949	10	40
6952	6962	10	40
6997	7005	8	32
Total		58	232

Note: Use Schlumberger Depth Determination Log – GR/CCL dated December 11, 1997 for depth correction.

6. RD and release WL unit. RIH w/ treating pkr on 2-7/8" WS to 6800' testing tubing to 5000 psi while RIH. Set Pkr @ 6800'. Load and Test BS to 500 psi.
7. MIRU DS acid truck. Attempt to pump into perfs (6900'-7005') spot 200 gal acid if necessary. Pump **5,800** gals **20%** NEFE anti-sludge HCl acid at a max rate of **5 BPM** and max treating pressure of 4,500 psi dropping **350** 1.3 SG balls spaced evenly throughout job. Displace with

8.6# BW – do not over displace. Record ISIP, 5, 10, & 15 minute SIP's. Shut in for 2 hrs to allow acid to spend.

Note: Pickle tubing before acid job if rep determines necessary.

* Acid system to contain:	1 GPT A264	Corrosion Inhibitor
	8 GPT L63	Iron Control Agents
	2 PPT A179	Iron Control Aid
	20 GPT U66	Mutual Solvent
	2 GPT W53	Non-Emulsifier

8. RU swab and swab well recording rates, volumes, pressures, and fluid levels. Report to engineer. RD swab.

NOTE: Evaluate Frac Job with Engineering.

9. Release Pkr and TOH. LD WS and PKR.
10. RIH w/ 2-7/8" production tbg as per ALS recommendation. NDBOP. NUWH. RIH w/ rods and pump as per ALS recommendation.
11. Turn well over to production.

Engineer – Richard Jenkins
432-687-7120 Office
432-631-3281 Cell

Monument: Abo, North

Monument "12" State #14

Location:

1,200' FNL & 1,350' FWL, Sec12, T-19S, R-36E

Unit Letter: C

Field: Monument North, Abo

County: Lea

State: NM

Area: Hobbs

Well Info:

Comp. Date: 1/9/1998

Spud Date: 11/25/1997

API: 30-025-34191

RefNO: BP3676

Status: TA

Lease No: State

NOTE: THIS WELL
CONTAINS A LARKIN SLIP-
HANGAR. THE LAST
PRESSURE CHECK AS OF
10/2006 WAS AS FOLLOWS:
CSG: 0psi TBG: 0psi

**Current
Wellbore Diagram**

Elevations

KB: 3754

GL: 3741

DF: 3753

Surface Casing

Size: 11-3/4"

Set @: 400'

With: 300 sx. cmt.

Hole Size: 14-3/4"

Circ: Yes

TOC @ Surface

Grade: H-40

Wt: 42 #

Intermediate Casing

Size: 8-5/8"

Set @: 2840'

With: 900 sx. cmt.

Hole Size: 11"

TOC: Surface

Grade: K-55, 8RD

Wt: 24 #

Production Casing

Size: 5-1/2"

Set @: 7153'

With: 500 sx. cmt.

Hole Size: 7-7/8"

TOC: 3400'

Grade: K-55 LTC

Wt: 15.5 & 17 #

(2/17/04)

Tbg Detail:

KB

1 JT J-55 2 7/8 WICOLLAR ON BTM

Length Depth
13.00
31.00

Rod Detail:

Formation Tops

Grayburg 4055

San Andres 4565

Delaware 4829

Bone Springs 5380

Drinkard 6884

Abo Shale 7224

Abo 7304

PBTD: 7100'
TD: 7518'

Updated: 17-Feb-04
By: Felix Trevino

This wellbore diagram is based on the most recent information regarding wellbore configuration and equipment that could be found in the Midland Office well files and computer databases as of the update date below. Verify what is in the hole with the well file in the Eunice Field Office. Discuss w/ WEO Engineer, WD Rep, OS, ALS, & FS prior to rigging up on well regarding any hazards or unknown issues pertaining to the well.

← CIBP @ 7100' PDQX Weatherford

7152' - 7518' Open hole

Monument: Drinkard North (gas) 96971

Location:

1,200' FNL & 1,350' FWL, Sec12, T-19S, R-36E
Unit Letter: C
Field: Monument: Drinkard North (gas)
County: Lea
State: NM
Area: Hobbs

Monument "12" State #14

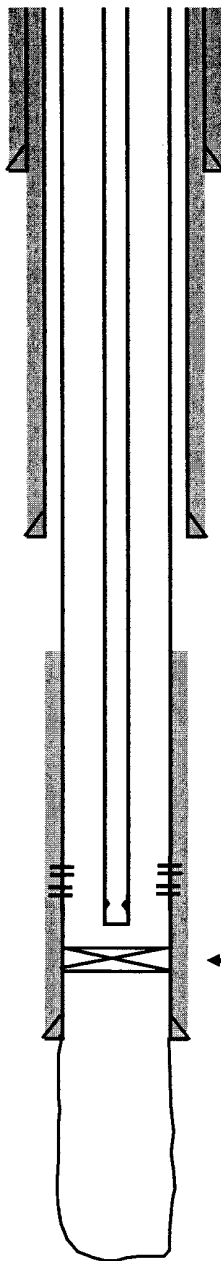
Well Info:

Comp. Date: 1/9/1998
Spud Date: 11/25/1997
API: 30-025-34191
RefNO: BP3676
Lease No: State

Elevations

KB: 3754
GL: 3741
DF: 3753

**Proposed
Wellbore Diagram**



Surface Casing

Size: 11-3/4"
Set @: 400'
With: 300 sx. cmt.
Hole Size: 14-3/4"
Circ: Yes
TOC @: Surface
Grade: H-40
Wt: 42 #

Intermediate Casing

Size: 8-5/8"
Set @: 2840'
With: 900 sx. cmt.
Hole Size: 11"
TOC: Surface
Grade: K-55, 8RD
Wt: 24 #

Production Casing

Size: 5-1/2"
Set @: 7153'
With: 500 sx. cmt.
Hole Size: 7-7/8"
TOC: 3400'
Grade: K-55 LTC
Wt: 15.5 & 17 #

Perfs Status
6900'-6950' Drinkard - Open

← CIBP @ 7100' PDQX Weatherford

7152' - 7518' Open hole

PBTD: 7100'
TD: 7518'

Updated: 21-Mar-07
By: rjdg

Formation Tops

Grayburg 4055
San Andres 4565
Delaware 4829
Bone Springs 5380
Drinkard 6884
Abo Shale 7224
Abo 7304

This wellbore diagram is based on the most recent information regarding wellbore configuration and equipment that could be found in the Midland Office well files and computer databases as of the update date below. Verify what is in the hole with the well file in the Eunice Field Office. Discuss w/ WEO Engineer, WO Rep, OS, ALS, & FS prior to rigging up on well regarding any hazards or unknown issues pertaining to the well.

Tubing Landing Details

[illegible]

S.P.F. 4

Tool Length 12

Top Perf	Bottom Perf	Net Feet	Total Holes
6900	6910	10	40
6913	6923	10	40
6926	6936	10	40
6939	6949	10	40
6952	6962	10	40
6997	7005	8	32
Total		58	232

Perfs	Acid Volume
6900-6910	1000
6913-6923	1000
6926-6936	1000
6939-6949	1000
6952-6962	1000
6997-7005	800
5800	

Number of Balls 348

ft

Max Rate	PPI Setting
5 bpm	6899-6911
5 bpm	6912-6924
5 bpm	6925-6937
5 bpm	6939-6951
5 bpm	6952-6964
5 bpm	6997-7009

DISTRICT I

P.O. Box 1980, Hobbs, NM 88241-1980

DISTRICT II

P.O. Box Drawer DD, Artesia, NM 88211-0719

DISTRICT III

1000 Rio Brazos Rd., Aztec, NM 87410

DISTRICT IV

P.O. Box 2088, Santa Fe, NM 87504-2088

State of New Mexico

Energy, Minerals and Natural Resources Department

OIL CONSERVATION DIVISION

P.O. Box 2088

Santa Fe, New Mexico 87504-2088

Form C-102

Revised February 10, 1999

Instructions on back

Submit to Appropriate District Office

State Lease - 4 Copies

Fee Lease - 3 Copies

☐ AMENDED REPORT

WELL LOCATION AND ACREAGE DEDICATION PLAT

¹ API Number 30-025-34191		² Pool Code 96971		³ Pool Name MONUMENT; DRINKARD NORTH (GAS)	
⁴ Property Code 18927		⁵ Property Name MONUMENT '12' STATE			⁶ Well No. 14
⁷ OGRID Number 4323		⁸ Operator Name CHEVRON USA INC			⁹ Elevation 3741' GL

¹⁰ Surface Location

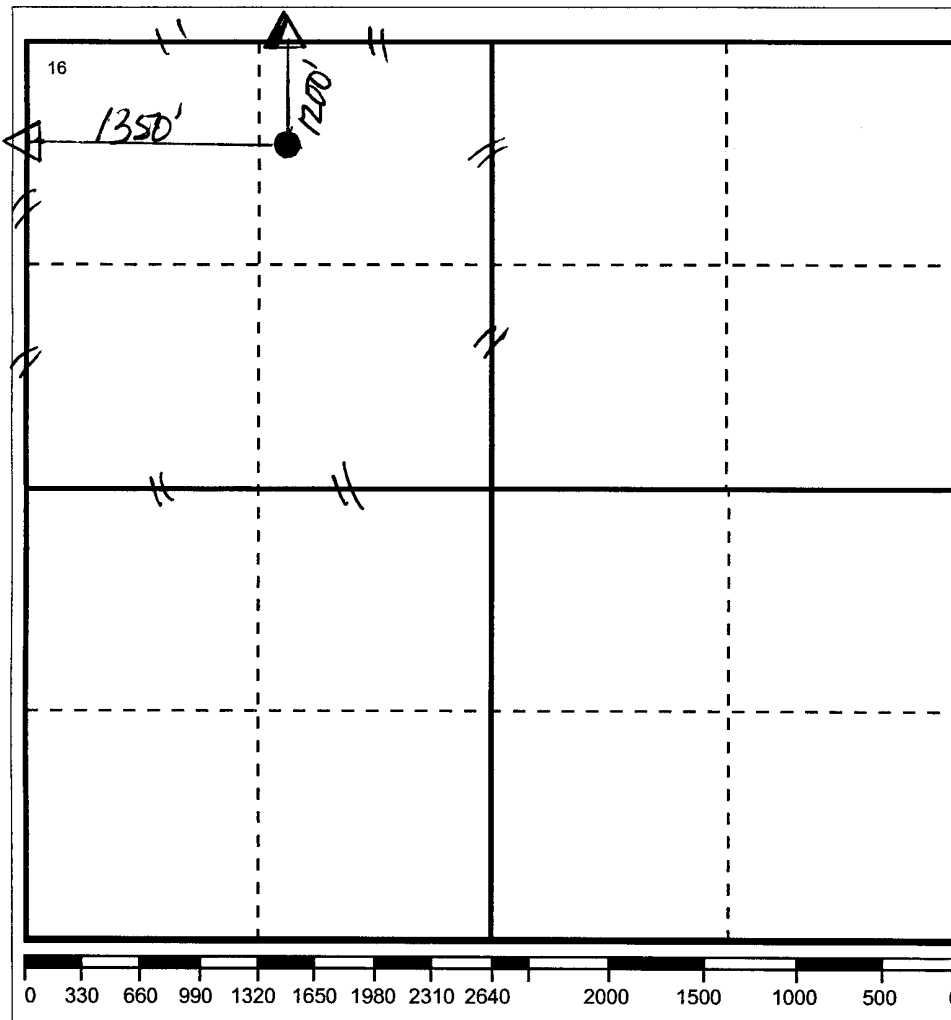
UI or lot no	Section	Township	Range	Lot.Idn	Feet From The	North/South Line	Feet From The	East/West Line	County
C	12	19-S	36-E		1200'	NORTH	1350'	WEST	LEA

¹¹ Bottom Hole Location If Different From Surface

UI or lot no.	Section	Township	Range	Lot.Idn	Feet From The	North/South Line	Feet From The	East/West Line	County

¹² Dedicated Acre 160	¹³ Joint or Infill No	¹⁴ Consolidation Code	¹⁵ Order No.
-------------------------------------	-------------------------------------	----------------------------------	-------------------------

NO ALLOWABLE WILL BE ASSIGNED TO THIS COMPLETION UNTIL ALL INTERESTS HAVE BEEN CONSOLIDATED
OR A NON-STANDARD UNIT HAS BEEN APPROVED BY THE DIVISION

¹⁷ OPERATOR CERTIFICATION

I hereby certify that the information contained herein is true and complete to the best of my knowledge and belief

Signature

Printed Name

Denise Pinkerton

Position

Regulatory Specialist

Date

4/10/2007

¹⁸ SURVEYOR CERTIFICATION

I hereby certify that the well location shown on this plat was plotted from field notes of actual surveys made by me or under my supervision, and that the same is true and correct to the best of my knowledge and belief.

Date Surveyed

Signature & Seal of
Professional Surveyor

Certificate No.