

UNITED STATES
DEPARTMENT OF THE INTERIOR
BUREAU OF LAND MANAGEMENTFORM APPROVED
OMB No. 1004-0137
Expires: March 31, 2007

SUNDRY NOTICES AND REPORTS ON WELLS

Do not use this form for proposals to drill or to re-enter an abandoned well. Use Form 3160-3 (APD) for such proposals.

SUBMIT IN TRIPLICATE- Other instructions on reverse side.

1. Type of Well
☐ Oil Well ☒ Gas Well ☐ Other2. Name of Operator
BOLD ENERGY, LP3a. Address
415 W. Wall, Suite 500 Midland, Texas 797013b. Phone No. (include area code)
432-686-11004. Location of Well (Footage, Sec., T., R., M., or Survey Description)
1980' FNL & 1980' FEL, Sec 3 - T24S - R34E5. Lease Serial No.
NM 03271066. If Indian, Allottee or Tribe Name
N/A7. If Unit or CA/Agreement, Name and/or No.
891009492 Nm 68289C DM8. Well Name and No.
Antelope Ridge Unit #69. API Well No.
30-025-2629110. Field and Pool, or Exploratory Area
Antelope Ridge Morrow11. County or Parish, State
Lea County, New Mexico

12. CHECK APPROPRIATE BOX(ES) TO INDICATE NATURE OF NOTICE, REPORT, OR OTHER DATA

TYPE OF SUBMISSION

TYPE OF ACTION

☐ Notice of Intent☒ Subsequent Report☐ Final Abandonment Notice☐ Acidize☐ Alter Casing☐ Casing Repair☐ Change Plans☐ Convert to Injection☐ Deepen☐ Fracture Treat☐ New Construction☐ Plug and Abandon☐ Plug Back☐ Production (Start/Resume)☐ Reclamation☐ Recomplete☒ Temporarily Abandon☐ Water Disposal☐ Water Shut-Off☐ Well Integrity☐ Other

13. Describe Proposed or Completed Operation (clearly state all pertinent details, including estimated starting date of any proposed work and approximate duration thereof. If the proposal is to deepen directionally or recomple horizontally, give subsurface locations and measured and true vertical depths of all pertinent markers and zones. Attach the Bond under which the work will be performed or provide the Bond No. on file with BLM/BIA. Required subsequent reports shall be filed within 30 days following completion of the involved operations. If the operation results in a multiple completion or recomple in a new interval, a Form 3160-4 shall be filed once testing has been completed. Final Abandonment Notices shall be filed only after all requirements, including reclamation, have been completed, and the operator has determined that the site is ready for final inspection.)

Subsequent report to Notice of Intent for Temporary Abandonment dated 3/14/07 approved for MIT on 3/22/07.

4/16/07: Locate deadmen anchors. MIRU TWS pulling unit. 4/17/06: Bled pressure off tubing and tubing/casing annulus. Perforated equalizing holes in tubing above and below top packer. 4/18/07: Well unloaded 590 bbls water. Released top packer. Unable to pull out of lower packer sealbore. Chemically cut tubing above bottom packer at 12,887' leaving 5' tubing stub. POOH w/ 1 - 3' x 2-7/8" SUB, 1 - 8' 2-7/8" tubing SUB, 366 jts 2-7/8" tubing, 19 jts 2-3/8" tubing, Arrow Packer w/ on-off tool, profile nipple, 19 jts 2-3/8" coated & wrapped tubing, and bottom cut joint. 4/19/07: WL set CIBP at 12,887'. Bailed 35' of cement on plug in two runs. TIH w/ CIBP on 2-7/8" tubing to 12,360'. CIBP would not set. POOH w/ tubing and CIBP. 4/20/07: WL set CIBP at 12,360'. Plug did not test. 4/21/07: Tagged CIBP at 12,360' and bailed 35' of cement on CIBP in 2 runs. WL set CIBP at 6,444'.

4/21/07 5:25 PM: Performed NM State mechanical integrity test - 540 psi for 30 minutes. Test successful.

Attachments: MIT test chart. Current Wellbore Diagram.

This wellbore will be evaluated for potential conversion to SWD and returned to beneficial use or PA'd by 4/1/08.

14. I hereby certify that the foregoing is true and correct
Name (Printed/Typed)

Shannon L. Klier

Title Operations Engineering Manager

Signature

Date

4/24/08

THIS SPACE FOR FEDERAL OR STATE OFFICE USE

Approved by

Title

Date APR 25 2007

Conditions of approval, if any, are attached. Approval of this notice does not warrant or certify that the applicant holds legal or equitable title to those rights in the subject lease which would entitle the applicant to conduct operations thereon.

Office

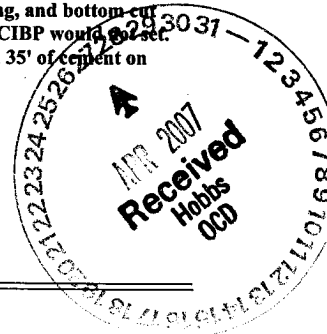
WESLEY W. INGRAM

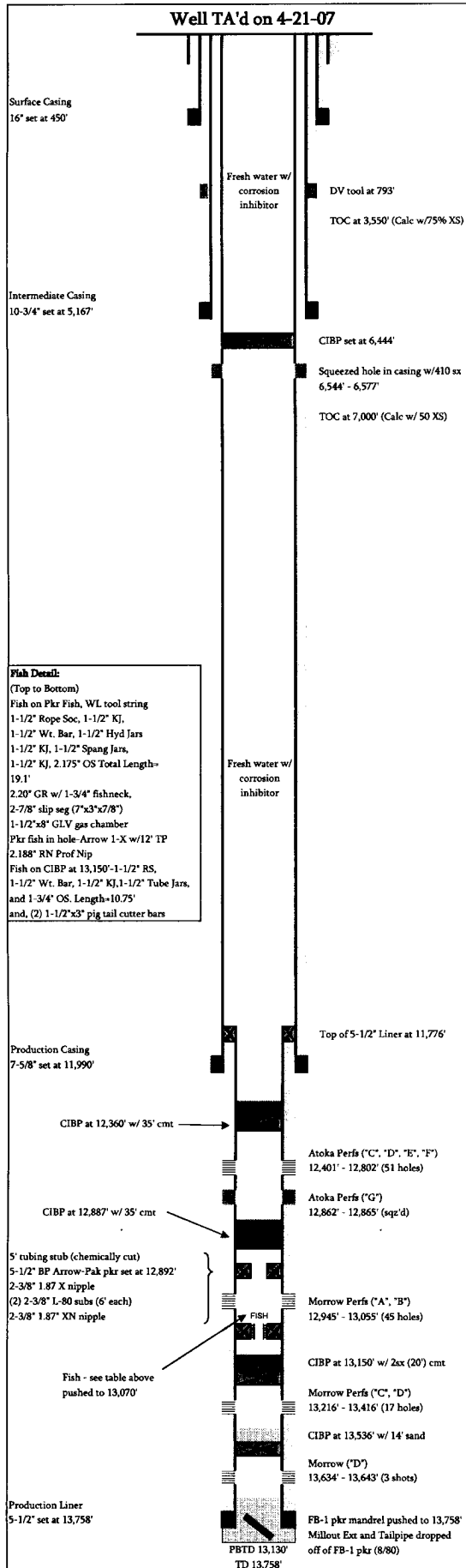
Title 18 U.S.C. Section 1001 and Title 43 U.S.C. Section 1212, make it a crime for any person knowingly and willfully to make to any Department or agency of the United States any false, fictitious or fraudulent statements or representations as to any matter within its jurisdiction.

(Instructions on page 2)

GWW

After 4/1/08 the well must be online
or plans to P & A must be submitted.





BOLD ENERGY, LP

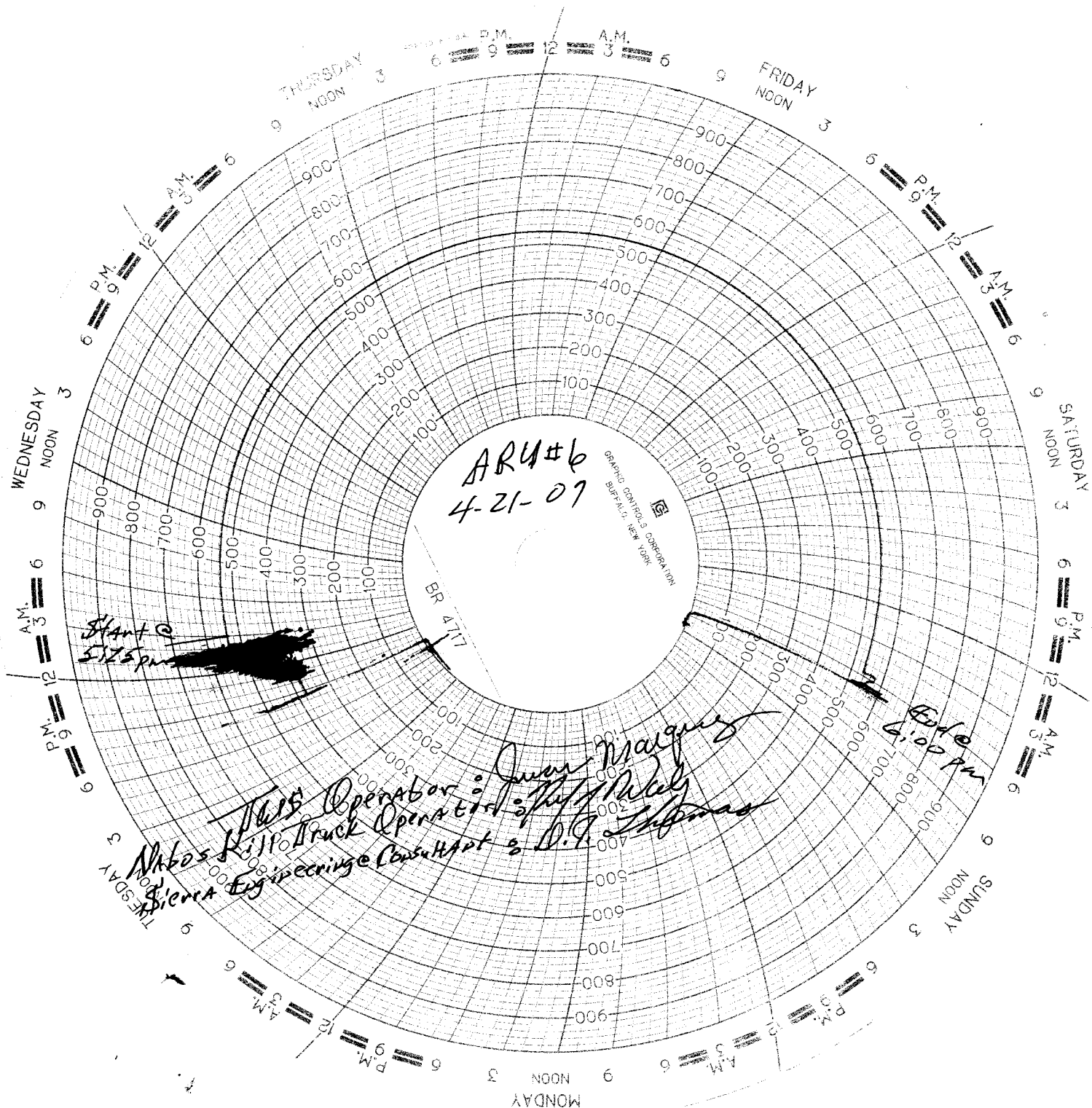
Antelope Ridge Unit #6

WI: 50.0%
Elevation: 3,499
KB: 26
Mess. TD: 13,758'
TVD: 13,758'
PBD: 13,130'
Zone: Morrow

NRI: 42.5%
API: 30-025-26291
Surface Location: 1980' FNL & 1980' FEL
Legal Description: Section 3 - T24S - R34E
Field: Antelope Ridge
County: Lea County
State: New Mexico

Casing	Hole	Weight	Grade	Depth	Burst	80% Burst	TOC
Conductor - 16"	20"	65#	H-40	450'	1,640	1,312	Surface (circ.)
10-3/4"	14-3/4"	40.5#	K-55	2,700'	3,130	2,504	Surface (circ.)
10-3/4"	14-3/4"	40.5#	S-80	3,800'	4,560	3,648	Surface (circ.)
10-3/4"	14-3/4"	45.5#	S-80	5,180'	5,210	4,168	Surface (circ.)
7-5/8"	9-1/2"	33.7#	P-110	11,990'	10,860	8,688	7,000' (calc)
5-1/2"	6-1/2"	23#	N-80	13,665'	10,560	8,448	TOI

Date	Event
3/14/1979	Spud
8/17/1979	TD at 13,758'
9/19/1979	RIH set pkr at 13,100' Perforated gross Morrow w/ 2\" OD thru thg guns and no breakdown Morrow \"C\": 13,216', -217', -218', -233', -234', -235', -316', -317' (8 shots) Morrow \"D\": 13,382', -383', -406', -407', -409', -410', -414', -415', -416', -634', -635', -643' (12 shots) Pressure came up to 2,100 psi after perforation. Open to pit on 32/64\" choke SITP = 5,160 psi (translates to 6,838 psi assuming gas gradient) No stimulation reported Tested at 5,500 MCFD thru 48/64\" choke, FTP 750 psi (Did not perf Morrow \"A\" 12,960' - 12,976') CAOF = 7,000 MCFD
10/2/1979	RIH w/ spinner. Determine that 90% gas from 13,406'-13,416', and 10% gas from 13,316'-13,320' RIH set Lok-Set pkr at 12,014' to dual Morrow & Atoka Perforated Atoka w/ 2\" OD de-centralized guns. Atoka \"C\": 12,401', -402', -417', -418', -419', -490', -491', -495', -496', -497' (10 shots) Atoka \"D\": 12,508', -509', -510', -512', -514', -516', -518', -564', -565', -566', -610', -611', -612' (13 shots) Atoka \"E\": 12,640', -642', -646', -647', -652', -654', -687', -688', -689' (9 shots) Atoka \"F\": 12,772', -774', -776', -778', -779', -792', -793', -794', -796', -798', -799', -801', -802' (13 shots) Overall Atoka = 51 shots over 401 ft gross interval. Pressure came up to 4,500 psi after perforation. Open well to pit, bled to 50 psi and 25 BW Tested at 500 MCFD at 100 psi FTP, 32/64\" choke.
11/2/1979	Acidized w/ 10,000 gal 15% MSR and N2 at 3.5 BPM Tested at 1,800 MCFD at 300 psi FTP. 48/64\" choke with 130 BCPD and 60 BWPD RIH spinner determine majority of gas from 12,417'-12,419'.
12/14/1979	Ran dual string completion with blast jets across Atoka. (Atoka initial BHP = 7,683 psi) Left Morrow SI and produced Atoka with initial rate of 1,100 MCFD at 700 psi FTP Lost wireline tool strings resulting in Atoka production problems. Performed PBU analysis indicated positive skin of 46 determined by Shell
8/4/1980	Begin WO to open Morrow to production SS in LT collapsed and failed. Killed well with 14.5# CaBr2. POOH with LT RIH LT and dual pkr. Dual pkr leaking
9/18/1980	Flwd Morrow at 5,000 MCFD, 150 BCPD, 10 BWPD. CP dropped from 2,100 psi to 1,500 psi Killed well with 12.4# CaBr2 water. POOH with LT and dual pkr.
10/6/1980	Finished WO efforts to dual Morrow and Atoka
12/7/1988	Morrow died. RU swab unit. IFL at 2,900' well KO after 2 swab runs
2/21/1990	Begin WO to remove dual string and place well on PLGR lift. Sand line parted while swbbing to recover fluid. Started fishing operations RIH pkr set at 12,885' (below Atoka perfs) Swabbed Morrow recovered fluid. RIH pkr set at 13,354' (below Morrow \"C\") Swabbed Morrow \"D\" Recovered fluid from Morrow \"D\" with a gas blow. (Morrow \"D\" drowned by CaBr2 water)
6/19/1990	Straddled Morrow from 13,406' - 416'. Acidized with 1,000 gal Acetic. Swabbed w/ gas shows. RU HES frac Morrow \"D\" (13,406' - 416') with HB Alcofoam: 37,100 lbs 20/40 Norton ISP Well cleaned up to 100 MCFD, 105 psi FTP
7/21/1990	Ran BHP survey, FTP = 190 psi, BHP = 1,820 psi mid perf, 0.306 psi/ft gradient Morrow put on production with Atoka behind pkr By July 1993 well cum'd 2.50 BCF, 34.3 MBO, and 62.2 MBW DCA EUR = 5.0 BCF, P/Z EUR = 5.0 BCF, AOI = 438 acres from 11' of primary pay, RF=50%
7/23/1993	POOH w/tbg and pkr. RIH w/ CIBP set at 13,150'. Left multiple W/L fish on top of CIBP
8/25/1993	RIH w/ tool suite (temp, press, gradiometer, and diverter flowmeter). FL= 3,500'. SIBHP = 5,840 psi. Open to tank on 13/64\". Gas from 12,400'-518'. No flow below 12,518'
9/1/1993	RIH CIBP set at 12,545' w/ 1 sk cmt over Atoka \"E\" & \"F\", new PBTID= 12,535'. ND BOP, NU tree, Swab Upper Atoka recovering fluid and small volume of gas Produced Atoka \"C\" and \"D\" lobes until June-94
6/21/1994	POOH w/ thg. DO CIBP at 12,545'
8/9/1994	Pkr set at 12,298 RIH w/ thg and GLV's. Place Atoka on GL recovering 150 BW+200 net MCFD RU Basin Acidizing. Acidize Atoka w/ 4,000 gal of 15% HCL at 5 BPM. Return well to GL initially recovering 400 MCFD and 350 BWPD Atoka production negligible as of 4/96 due to GLV open near surface cycling gas only.
5/1997	POOH thg. repaired GLV's. Atoka returned to production at 304 MCFD
10/20/2004	Citation submits proposal to recomplete Atoka and Morrow
1/2005	Commence operations w/ PU. Atoka producing +/- 10 MCFD POOH w/ thg and GLV's, thg parted with top of fish at 7,740'. 35 day fishing job. Sqz'd csg leaks from 6,544'-6,577' Spent 20 more days fishing Pushed all lost tools in hole to 13,070', sqz'd Atoka \"G\" from 12,862'-12,865'. Ran TCP guns and perforated: Morrow \"A\" and \"B\" perfs from 12,945'-13,055', 45 shots OA Swab Morrow \"A\" and \"B\" perfs. fluid entry scattered and less than 10 BWPD
3/29/2005	Set packers to straddle Atoka perfs. Producing from Morrow A & B only.
4/6/2005	Surface build-up to 520 psi after 791 hrs, opened well to tank, pressure bled to 0 in 12 minutes Left well open to tank, started flowing +/- 3 MCFD
6/9/2005	RU swab unit, recovered 34 BW w/ IFL = 6,300' and FFL = 11,500' RD swab unit Flwg well to tank at 3 MCFD at 30 psi FTP
6/16/2005	RU CTU and treated Morrow perfs w/ 2,500 gal of ClaySafe and 16 tons of CO2 Making 6 MCFD and 0 BWPD.
6/28/2005	Dropped from report. Well making no gas.
4/17/2007	Commence operations to TA well. Pull existing tubing & pkr. Set CIBP's as shown.
4/21/2007	Perform MIT.



AR4#6
4-21-07

GRAPHIC CONTROLS CORPORATION
BUFFALO, NEW YORK

BR 4717

Start @ 5:15 pm

THIS Operator: Juan Marquez
Nabos Hill Truck Operator: [Signature]
Sierra Engineering Consultant: D.P. Thomas

6:10 pm