

**District I**  
1625 N. French Dr., Hobbs, NM 88240  
**District II**  
1301 W. Grand Avenue, Artesia, NM 88210  
**District III**  
1000 Rio Brazos Road, Aztec, NM 87410  
**District IV**  
1220 S. St. Francis Dr., Santa Fe, NM 87505

State of New Mexico  
Energy Minerals and Natural Resources

Form C-101  
Revised March 17, 1999

Oil Conservation Division  
1220 South St. Francis Dr.  
Santa Fe, NM 87505

Submit to appropriate District Office  
State Lease - 6 Copies  
Fee Lease - 5 Copies

☒ AMENDED REPORT

**APPLICATION FOR PERMIT TO DRILL, RE-ENTER, DEEPEN, PLUGBACK, OR ADD A ZONE**

<sup>1</sup> Operator Name and Address Chesapeake Operating, Inc. P. O. Box 18496 Oklahoma City, OK 73154-0496		<sup>2</sup> OGRID Number 147179
		<sup>3</sup> API Number 30-025-36408
<sup>4</sup> Property Code 28925	<sup>5</sup> Property Name Buddy 9	<sup>6</sup> Well No. 1

**<sup>7</sup> Surface Location**

UL or lot no.	Section	Township	Range	Lot Idn	Feet from the	North/South line	Feet from the	East/West line	County
K	9	16S	37E		2085	South	2055	West	Lea

**<sup>8</sup> Proposed Bottom Hole Location If Different From Surface**

UL or lot no.	Section	Township	Range	Lot Idn	Feet from the	North/South line	Feet from the	East/West line	County
<sup>9</sup> Proposed Pool 1 Northeast Lovington, Strawn Upper Penn					<sup>10</sup> Proposed Pool 2				

<sup>11</sup> Work Type Code New	<sup>12</sup> Well Type Code O	<sup>13</sup> Cable/Rotary R	<sup>14</sup> Lease Type Code P	<sup>15</sup> Ground Level Elevation 3816'
<sup>16</sup> Multiple N	<sup>17</sup> Proposed Depth 11,800'	<sup>18</sup> Formation Strawn	<sup>19</sup> Contractor Patterson #504	<sup>20</sup> Spud Date 30-45 days

**<sup>21</sup> Proposed Casing and Cement Program**

Hole Size	Casing Size	Casing weight/foot	Setting Depth	Sacks of Cement	Estimated TOC
17-1/2"	13-3/8"	48#	0-510'	± 500	Surface
11"	8-5/8"	32#	0-5,000'	± 1400	Surface
7-7/8"	5-1/2"	17#	0-11,800'	± 1100	5000'

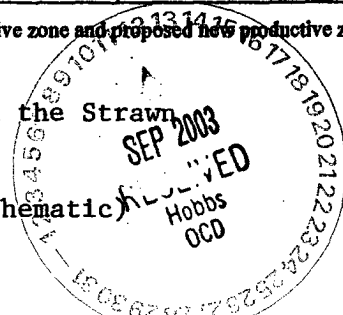
**<sup>22</sup> Describe the proposed program. If this application is to DEEPEN or PLUG BACK, give the data on the present productive zone and proposed new productive zone.**

Describe the blowout prevention program, if any. Use additional sheets if necessary.

Chesapeake Operating, Inc. proposes to drill to a TD of 11,800' in the Strawn formation w/Patterson #504 as the drilling contractor.

BOP consists of 11" 5M# blind & pipe rams & 11" 5M# Annular (see schematic)

Permit Expires 1 Year From Approval  
Date Unless Drilling Underway



**<sup>23</sup> I hereby certify that the information given above is true and complete to the best of my knowledge and belief.**

Signature: *Barbara J. Bale*

Printed name: Barbara J. Bale

Title: Regulatory Analyst

Date: 10/10/03

Phone: (405)848-8000

**OIL CONSERVATION DIVISION**

Approved by: *Paul J. Smith*

Title:

PETROLEUM ENGINEER

Approval Date: SEP 15 2003

Expiration Date:

Conditions of Approval:

Attached ☐

## State of New Mexico

## DISTRICT I

P.O. Box 1980, Hobbs, NM 88241-1980

Energy, Minerals and Natural Resources Department

Form C-10

Revised February 10, 199

Submit to Appropriate District Office

State Lease - 4 Copie

Fee Lease - 3 Copie

## DISTRICT II

P.O. Drawer DD, Artesia, NM 88211-0719

## OIL CONSERVATION DIVISION

P.O. Box 2088

Santa Fe, New Mexico 87504-2088

## DISTRICT III

1000 Rio Brazos Rd., Aztec, NM 87410

## DISTRICT IV

P.O. BOX 2088, SANTA FE, N.M. 87504-2088

## WELL LOCATION AND ACREAGE DEDICATION PLAT

☒ AMENDED REPORT

API Number <b>30-025-36408</b>	Pool Code <b>40760</b>	Pool Name Northeast Lovington, <b>Strawn</b> <b>Upper Penn</b>
Property Code <b>28925</b>	Property Name <b>BUDDY 9</b>	Well Number <b>1</b>
OGRID No. <b>147179</b>	Operator Name <b>CHESAPEAKE OPERATING, INC.</b>	Elevation <b>3815'</b>

## Surface Location

UL or lot No.	Section	Township	Range	Lot Idn	Feet from the	North/South line	Feet from the	East/West line	County
K	9	16-S	37-E		2085'	SOUTH	2055'	WEST	LEA

## Bottom Hole Location If Different From Surface

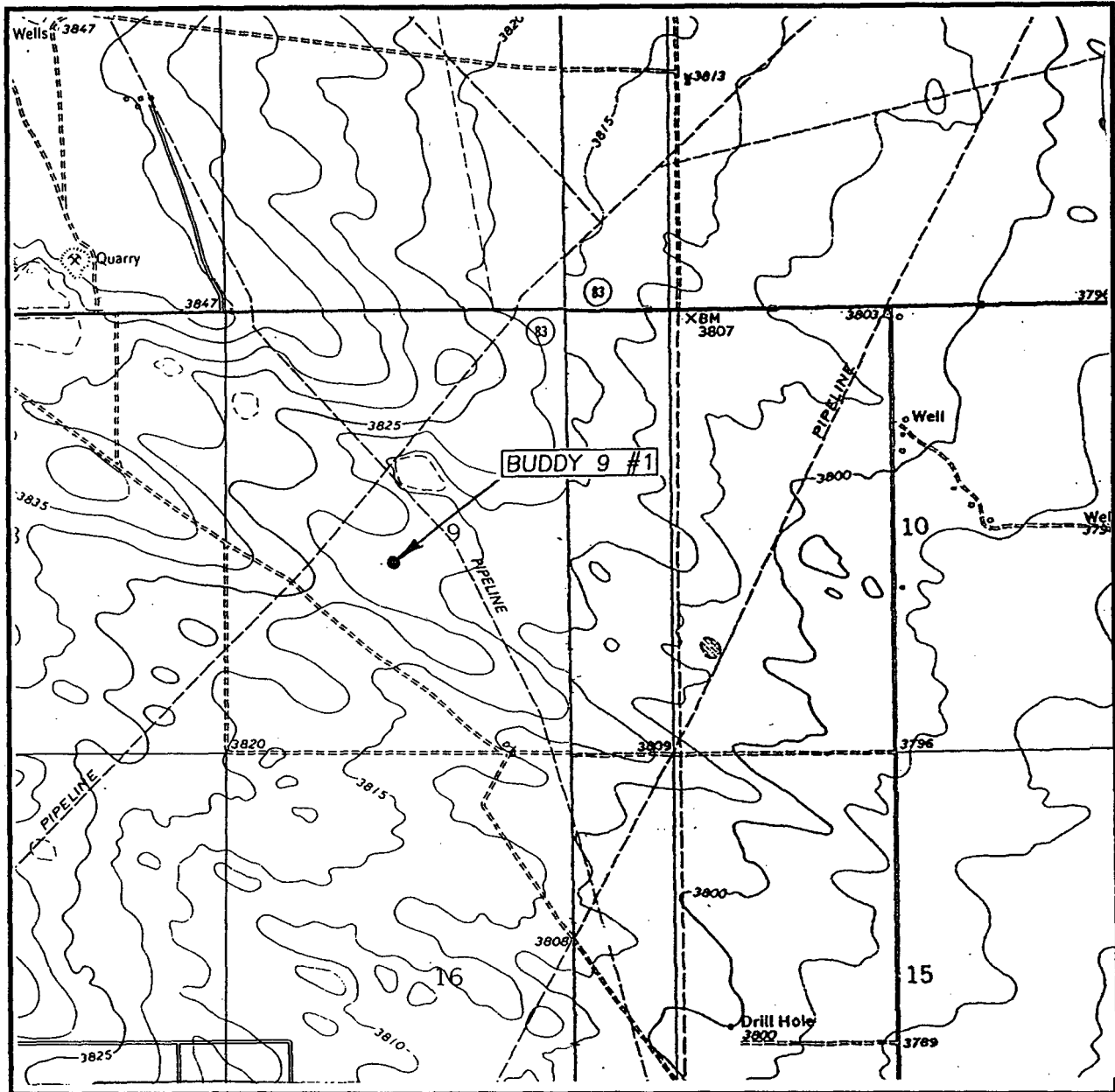
UL or lot No.	Section	Township	Range	Lot Idn	Feet from the	North/South line	Feet from the	East/West line	County

Dedicated Acres	Joint or Infill	Consolidation Code	Order No.
80			

NO ALLOWABLE WILL BE ASSIGNED TO THIS COMPLETION UNTIL ALL INTERESTS HAVE BEEN CONSOLIDATED  
OR A NON-STANDARD UNIT HAS BEEN APPROVED BY THE DIVISION

	<p><u>GEODETC COORDINATE</u></p> <p>NAD 27 NME</p> <p>Y.= 705531.1 N</p> <p>X.= 830395.5 E</p> <p>LAT.= 32°56'05.78"N</p> <p>LONG.= 103°15'23.33"W</p>	<p><b>OPERATOR CERTIFICATION</b></p> <p>I hereby certify the the information contained heretr is true and complete to the best of my knowledge and belief.</p> <p><i>Barbara J. Bale</i></p> <p>Signature</p> <p>Barbara J. Bale</p> <p>Printed Name</p> <p>Regulatory Analyst</p> <p>Title</p> <p>10/10/03</p> <p>Date</p>
		<p><b>SURVEYOR CERTIFICATION</b></p> <p>I hereby certify that the well location shown on this plat was plotted from field notes of actual surveys made by me or under my supervision, and that the same is true and correct to the best of my belief.</p> <p>September 02, 2003</p> <p>Date Surveyed</p> <p>AWB</p> <p>Signature &amp; Seal of Professional Surveyor</p> <p><i>GARY KIDSON</i> 9/2/03</p> <p>03-11-0984</p> <p>Certificate No.: GARY KIDSON 12641</p>

# LOCATION VERIFICATION MAP



SCALE: 1" = 2000'

CONTOUR INTERVAL: 5'  
HUMBLE CITY NW, N.M.  
LOVINGTON, N.M.

SEC. 9 TWP. 16-S RGE. 37-E

SURVEY N.M.P.M.

COUNTY LEA

DESCRIPTION 2260' FSL & 1980' FWL

ELEVATION 3816'

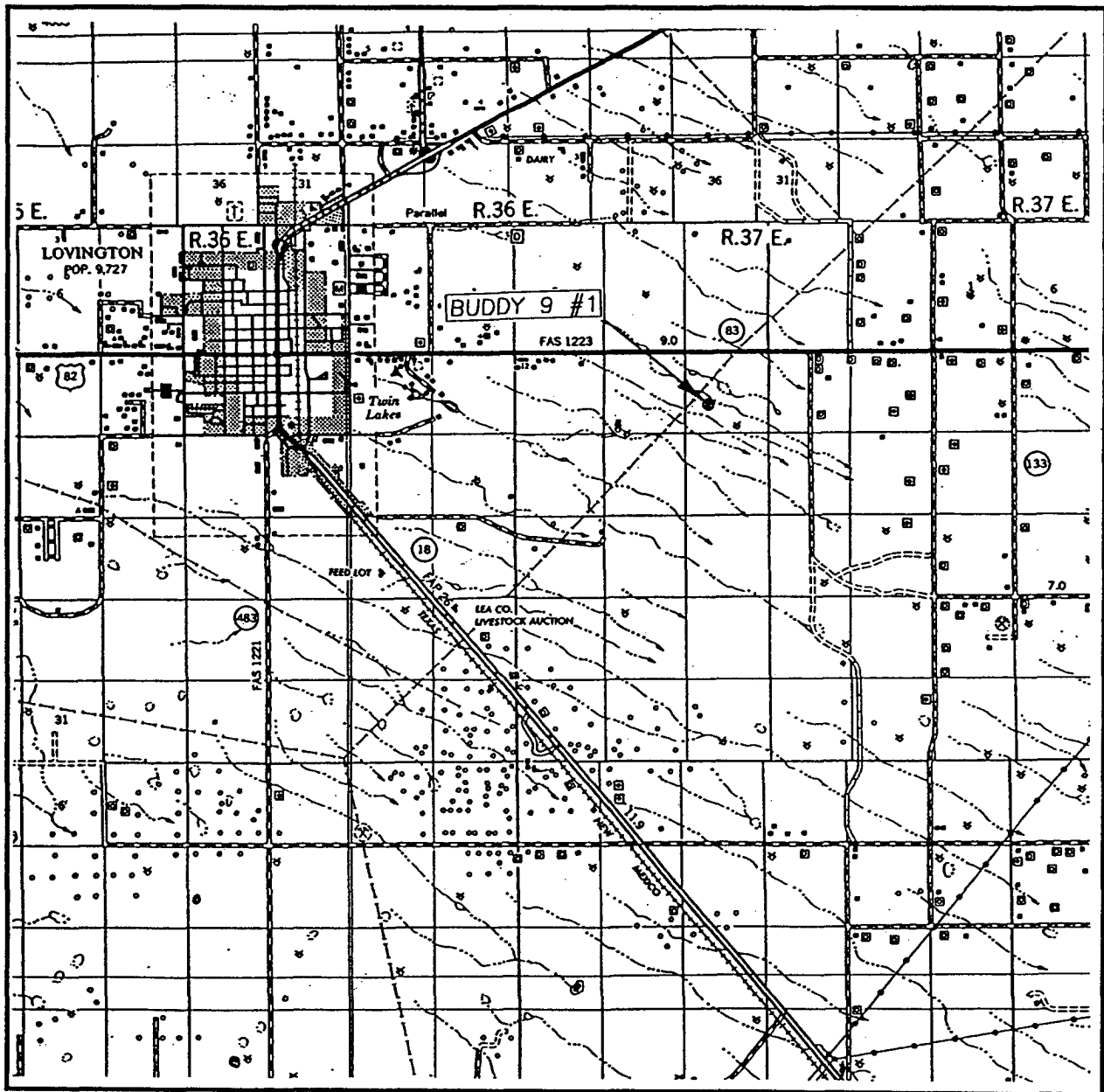
OPERATOR CHESAPEAKE OPERATING, INC.

LEASE BUDDY 9

U.S.G.S. TOPOGRAPHIC MAP  
HUMBLE CITY NW, LOVINGTON, N.M.

JOHN WEST SURVEYING  
HOBBS, NEW MEXICO  
(505) 393-3117

# VICINITY MAP



SCALE: 1" = 2 MILES

SEC. 9 TWP. 16-S RGE. 37-E

SURVEY N.M.P.M.

COUNTY LEA

DESCRIPTION 2260' FSL & 1980' FWL

ELEVATION 3816'

OPERATOR CHESAPEAKE OPERATING, INC.

LEASE BUDDY 9

JOHN WEST SURVEYING  
HOBBS, NEW MEXICO  
(505) 393-3117

# BLOWOUT PREVENTOR SCHEMATIC

## CHESAPEAKE OPERATING INC

**WELL** : BUDDY 1-9

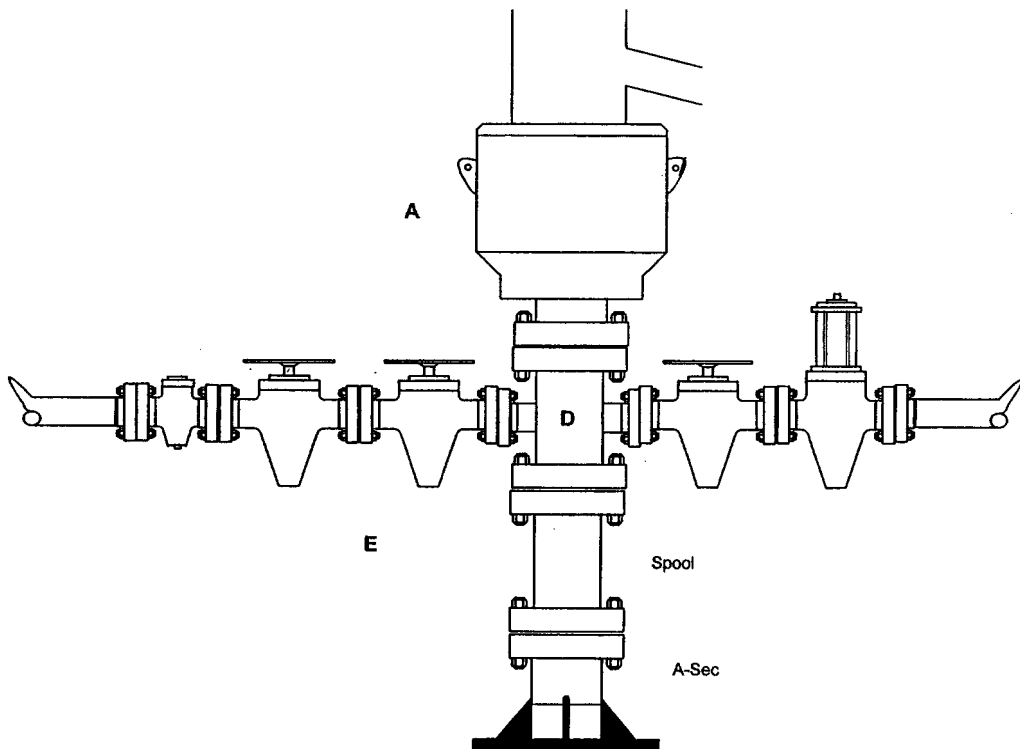
**RIG** : Patterson 504

**COUNTY** : Lea

**STATE:** New Mexico

**OPERATION** Drill out below 13-5/8" Casing

	SIZE	PRESSURE	DESCRIPTION
A	13-5/8"	5,000#	Annular
D	13-5/8"	5,000#	Mud Cross
Spool	13-5/8" 3M x 13-5/8" 5M		
A-Sec	13-5/8" SOW x 13-5/8" 3M		



### Kill Line

SIZE	PRESSURE	DESCRIPTION
2"	10,000#	Check Valve
2"	10,000#	Gate Valve
2"	10,000#	Gate Valve

### Choke Line

SIZE	PRESSURE	DESCRIPTION
4"	10,000#	Gate Valve
4"	10,000#	HCR Valve

# BLOWOUT PREVENTOR SCHEMATIC

## CHESAPEAKE OPERATING INC

**WELL** : BUDDY 1-9

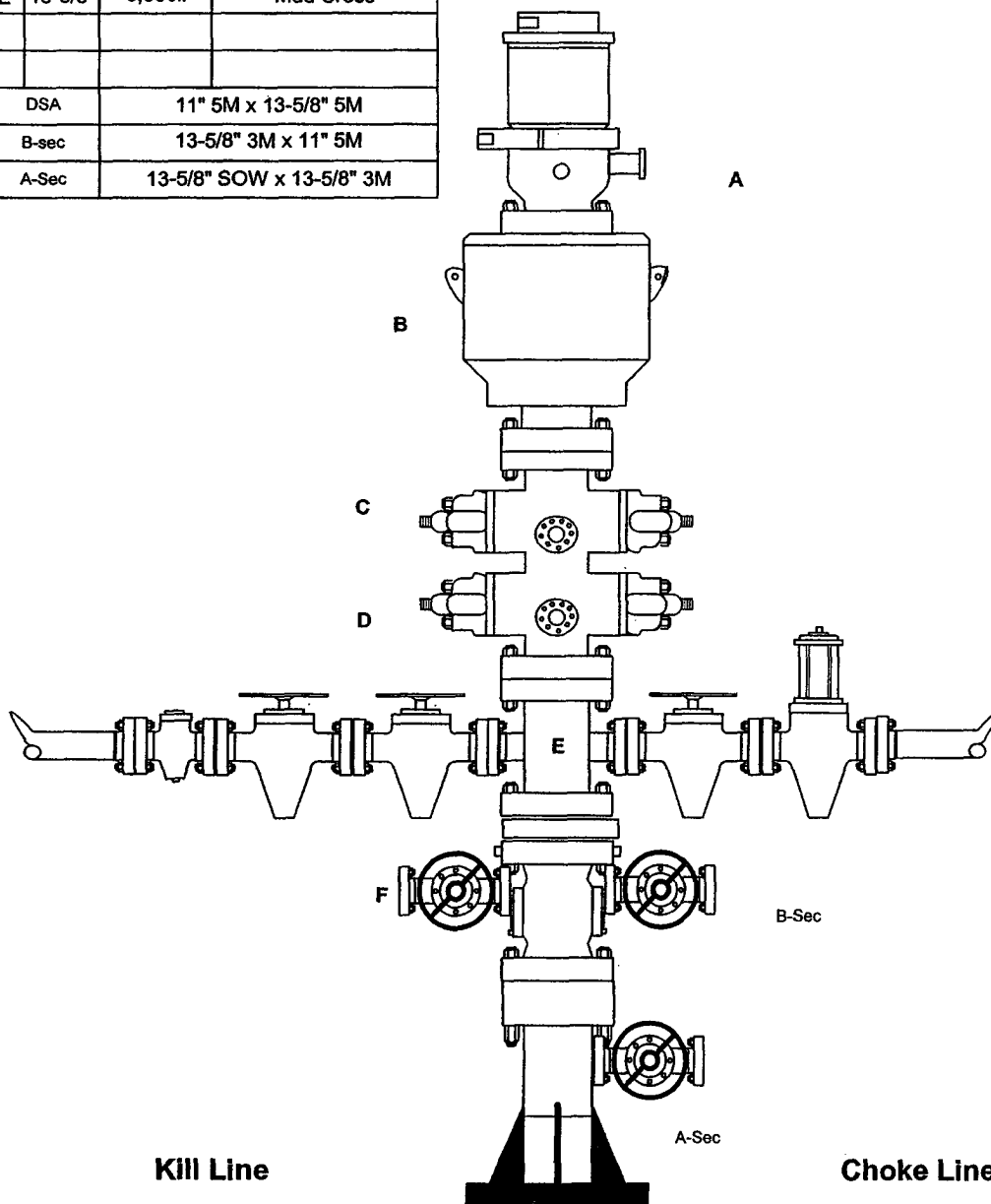
**RIG** : Patterson 504

**COUNTY** : Lea

**STATE:** New Mexico

**OPERATION:** Drill out below 8-5/8" Casing

	SIZE	PRESSURE	DESCRIPTION
A	13-5/8"	500#	Rot Head
B	13-5/8"	5,000#	Annular
C	13-5/8"	5,000#	Pipe Rams
D	13-5/8"	5,000#	Blind Rams
E	13-5/8"	5,000#	Mud Cross
DSA	11" 5M x 13-5/8" 5M		
B-sec	13-5/8" 3M x 11" 5M		
A-Sec	13-5/8" SOW x 13-5/8" 3M		



SIZE	PRESSURE	DESCRIPTION
2"	10,000#	Check Valve
2"	10,000#	Gate Valve
2"	10,000#	Gate Valve

SIZE	PRESSURE	DESCRIPTION
4"	10,000#	Gate Valve
4"	10,000#	HCR Valve