

Submit 3 Copies To Appropriate District Office
District I
1625 N. French Dr., Hobbs, NM 87240
District II
1301 W. Grand Ave., Artesia, NM 88210
District III
1000 Rio Brazos Rd., Aztec, NM 87410
District IV
1220 S. St. Francis Dr., Santa Fe, NM 87505

State of New Mexico
Energy, Minerals and Natural Resources

Form C-103
May 27, 2004

OIL CONSERVATION DIVISION
1220 South St. Francis Dr.
Santa Fe, NM 87505

WELL API NO. 30-025-32526
5. Indicate Type of Lease STATE <input type="checkbox"/> FEE <input checked="" type="checkbox"/>
6. State Oil & Gas Lease No. 27820
7. Lease Name or Unit Agreement Name: West Lovington Strawn Unit
8. Well Number 10
9. OGRID Number 162928
10. Pool name or Wildcat Lovington, Strawn, West

SUNDRY NOTICES AND REPORTS ON WELLS
(DO NOT USE THIS FORM FOR PROPOSALS TO DRILL OR TO DEEPEN OR PLUG BACK TO A DIFFERENT RESERVOIR. USE "APPLICATION FOR PERMIT" (FORM C-101) FOR SUCH PROPOSALS.)

1. Type of Well: Oil Well <input checked="" type="checkbox"/> Gas Well <input type="checkbox"/> Other <input type="checkbox"/>
2. Name of Operator Energen Resources Corporation
3. Address of Operator 3300 N. "A" St., Bldg 4, Ste. 100, Midland, TX 79705
4. Well Location Unit Letter <u>G</u> : <u>2310'</u> feet from the <u>North</u> line and <u>1980'</u> feet from the <u>East</u> line Section <u>33</u> Township <u>15S</u> Range <u>35E</u> NMPM County <u>Lea</u>
11. Elevation (Show whether DR, RKB, RT, GR, etc.) <u>3979'</u>
Pit or Below-grade Tank Application <input type="checkbox"/> or Closure <input type="checkbox"/> Pit type _____ Depth to Groundwater _____ Distance from nearest fresh water well _____ Distance from nearest surface water _____ Pit Liner Thickness: _____ mil Below-Grade Tank: Volume _____ bbls; Construction Material _____

12. Check Appropriate Box to Indicate Nature of Notice, Report, or Other Data

NOTICE OF INTENTION TO:

PERFORM REMEDIAL WORK ☐ PLUG AND ABANDON ☒
TEMPORARILY ABANDON ☐ CHANGE PLANS ☐
PULL OR ALTER CASING ☐ MULTIPLE COMPLETION ☐
OTHER: ☐

SUBSEQUENT REPORT OF:

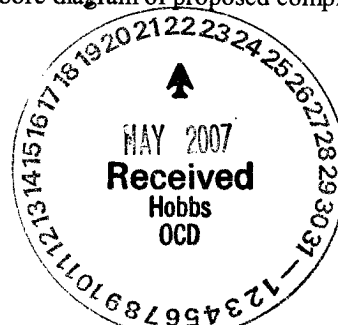
REMEDIAL WORK ☐ ALTERING CASING ☐
COMMENCE DRILLING OPNS. ☐ PLUG AND ABANDONMENT ☐
CASING TEST AND CEMENT JOB ☐
OTHER: ☐

13. Describe proposed or completed operations. (Clearly state all pertinent details, and give pertinent dates, including estimated date of starting any proposed work). SEE RULE 1103. For Multiple Completions: Attach wellbore diagram of proposed completion or recompletion.

See attached procedure.

SEE 3rd Page
FOR CORRECTIONS

**THE OIL CONSERVATION DIVISION MUST
BE NOTIFIED 24 HOURS PRIOR TO THE
BEGINNING OF PLUGGING OPERATIONS.**



I hereby certify that the information above is true and complete to the best of my knowledge and belief. I further certify that any pit or below-grade tank has been/will be constructed or closed according to NMOCDC guidelines ☐ , a general permit ☐ or an (attached) alternative OCD-approved plan ☐

SIGNATURE Carolyn Larson TITLE Regulatory Analyst DATE 5/21/07

Type or print name Carolyn Larson

E-mail address: clarson@energen.com
Telephone No. 432 684-3693

For State Use Only

APPROVED BY Harry W. Wink DATE MAY 23 2007

Conditions of Approval, if any:

OC FIELD REPRESENTATIVE II/STAFF MANAGER

ENERGEN RESOURCES CORPORATION

WLSU #10

2310' FNL and 1980' FEL
Sec 33, T-15-S, R-35-E
Lea, Co. NM
West Lovington Field
P&A Well

Date: May 18, 2007

AFE No: PB050507

Cost: \$50,000

WI: 89.98% NRI: 73.98%

TD: 11900' PBTD: 11849' KB: 3997' GL: 3979'

Surface Casing: 13-3/8" 48#/ft, Limited SVS Set at 404'.
Cemented w/440 sx class C. Cement
circulated.

Intermediate Casing: 8-5/8" 32#/ft, J-55 Surf to 3989'
M-80 3989-4733'
Cemented w/700 sx class C.
Cement circulated.

Production Casing: 5-1/2" 17#/ft, S-95 Surf to 499'
N-80 1107 to 10992'
S-95 10992' to 11886'
Cemented w/742 sx class H
TOC at 8320'

Tubing: None

Rods: None

Pump: None

Perforations: Strawn: 11605-11608' 12 Holes at 4 SPF
115546-11596' 156 Holes at 6 SPF

Casing leak at 5555' & 5576'
Sqzd at 5555' w/200 sx class H cement
Suicide sqz. From 8315' to 5555' w/355 sx cement

CIBP set at 11600'

CIBP set at 11463'

ENERGEN RESOURCES CORPORATION

WLSU #10

2310' FNL and 1980' FEL
Sec 33, T-15-S, R-35-E
Lea, Co. NM
West Lovington Field
P&A Well

1. MIRU Pulling Unit
2. Install BOPE.
3. Dump 2 sx cement cap on CIBP at 11,493'.
4. Load hole with 9 ppg plugging mud to 5500'. POOH.
5. Set cement plug from 5600 back to 5500'.
6. Tag cement plug. Circulate 9 ppg mud to 4650'.
7. Perforate casing at 4783' with 4 squeeze holes.
8. RIH w/pkr and set at 4600'.
9. Squeeze cement through perfs at 4783 back up to 4683'. Release pkr and POOH.
10. RIH w/tbg. Tag cement plug. Circulate 9# mud to 1610'.
11. Set cement plug from 1710' back to 1610'.
12. RIH w/tbg. Tag cement plug. Circulate 9# mud to 350'.
13. Perforate casing at 454' with 4 squeeze holes.
14. RIH w/pkr and set at 250'.
15. Squeeze cement through perfs at 454 back up to 354'. Release pkr and POOH.
16. RIH w/ tbg. Tag cement plug. Circulate 9 #/gal mud to surface.
17. Perforate casing at 70' with 4 squeeze holes.

SPOT 255X F/ 8370'-8270'
(PLUGS ARE MIN.-3000')

ENERGEN RESOURCES CORPORATION

WLSU #10

2310' FNL and 1980' FEL

Sec 33, T-15-S, R-35-E

Lea, Co. NM

West Lovington Field

P&A Well

18. Circulate cement through perfs at 70' to surface.
19. Cut off wellhead 3' from surface and well on P&A marker.
20. RD pulling unit

ENERGEN RESOURCES CORP

WLSU #010

(formerly Wiley Fee No. 1)

LEA COUNTY, NM

GL Elevation: 3979'

KB Elevation: 3996.5' -- 17.5' above GL

Location: 2310' FNL X 1980' FEL
Sec 33-15S-35E

Spud: 06/03/94

API :

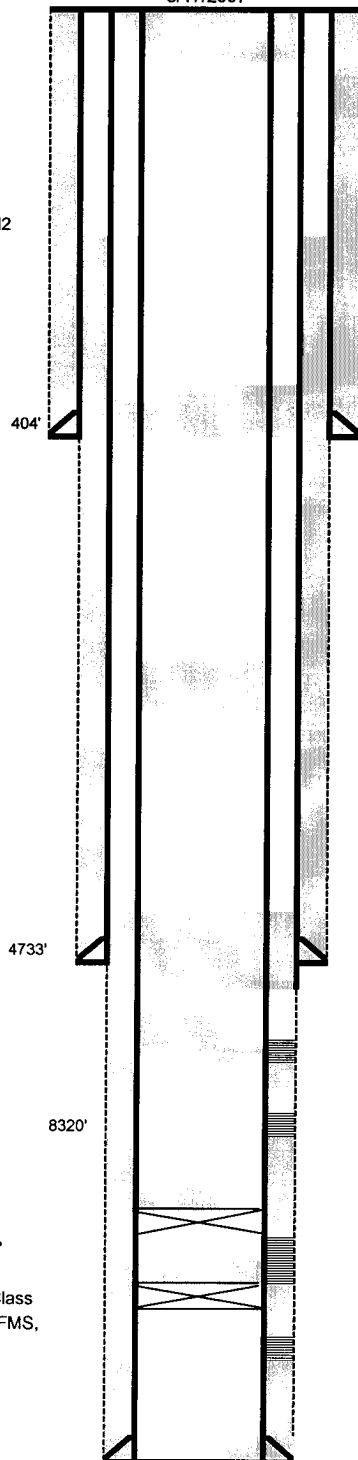
Proposed P&A
5/17/2007

Conductor:
None

Surface Casing:
13-3/8" 48#, LS @ 404'
Cemented to surface
with 440 sx Class "C" w/ 2% CaCl₂
(circulated 45 sx)

Intermediate Casing:
8-5/8" 32# J-55, Mav-80 @ 4733'
cmt w/ 500sx PCL Class "C"
w/5% salt followed by 200sx
Class "C" w/1% CaCl₂.
TOC: Unknown

Production Casing:
5 1/2" 17#, N-80 & S-95 @ 11,886'
Preflushed w/ 1000 gals sodium
metasilicate & cmted w/ 742 sx Class
"H" 2/ 3% KCl, 75% FL-25, 0.2%FMS,
0.2% FP-8.
TOC: 8320'



Cement plug surface to 70'

Cement plug from 347 to 447'
397'
Perf casing at 447'

Cement plug from 1610 to 1710'

Perf @ 4743'
Cement plug 4683 to 4783'

Cement plug 5500 to 5600'

Casing Leak at 5530'. MicroVertilog measuments
Sqzd @ 5555 w 200sx class H cmt
Suicide sqz: 355 sx 8315 to 5555

CIBP: Set at 11,493' (2 sx cmt cap)
Strawn Perfs:

CIBP: Set at 11,600'
Lower Strawn Perfs: 11,605- 11,608' total 12 holes
(6/21/2001)

PBD: 11,849'

TD: 11,900'