

District I

1625 N. French Dr., Hobbs, NM 88240

District II

1301 W. Grand Avenue, Artesia, NM 88210

District III

1000 Rio Brazos Road, Aztec, NM 87410

District IV

1220 S. St. Francis Dr., Santa Fe, NM 87505

State of New Mexico
Energy Minerals and Natural ResourcesOil Conservation Division
1220 South St. Francis Dr.
Santa Fe, NM 87505Form C-101
Revised March 17, 1999Submit to appropriate District Office
State Lease - 6 Copies
Fee Lease - 5 Copies☐ AMENDED REPORT

APPLICATION FOR PERMIT TO DRILL, RE-ENTER, DEEPEN, PLUGBACK, OR ADD A ZONE

¹ Operator Name and Address V-F Petroleum Inc. P.O. Box 1889 Midland, Texas 79702		² OGRID Number 24010
		³ API Number 30 - 025 - 26593
⁴ Property Code 6280	⁵ Property Name Uno Mas	⁶ Well No. 1

⁷ Surface Location

UL or lot no.	Section	Township	Range	Lot Idn	Feet from the	North/South line	Feet from the	East/West line	County
C	12	17S	35E		660	N	1,980	W	LEA

⁸ Proposed Bottom Hole Location If Different From Surface (if unsuccessful in tieback)

UL or lot no.	Section	Township	Range	Lot Idn	Feet from the	North/South line	Feet from the	East/West line	County
C	12	17S	35E		1,310'	N	2,630'	W	Lea

⁹ Proposed Pool 1

Shoe Bar Mississippian

¹⁰ Proposed Pool 2

¹¹ Work Type Code E	¹² Well Type Code G	¹³ Cable/Rotary R	¹⁴ Lease Type Code S	¹⁵ Ground Level Elevation 3,936'
¹⁶ Multiple N	¹⁷ Proposed Depth 13,103'	¹⁸ Formation Mississippian	¹⁹ Contractor NA	²⁰ Spud Date 10/03

²¹ Proposed Casing and Cement Program

Hole Size	Casing Size	Casing weight/foot	Setting Depth	Sacks of Cement	Estimated TOC
17 1/2	13 3/8	48	453	500	Surface
12 1/4	9 5/8	40	4,981	2,600	Surface
8 1/2	4 1/2	11.6 & 13.5	13,102	1,025	9,000'

²² Describe the proposed program. If this application is to DEEPEN or PLUG BACK, give the data on the present productive zone and proposed new productive zone. Describe the blowout prevention program, if any. Use additional sheets if necessary.

It is proposed to reenter the well and reestablish the Mississippian production by a tieback procedure with the existing 4 1/2" stub at 5,990'. If the tieback operation is unsuccessful, it is proposed to kickoff the well as deep as possible to a new TD of 13,200' and a new BHL (1,310' FNL & 2,630' FWL). At TD, the well will be logged. If productive, we will set a 5 1/2" casing string back to the surface. A 3,000 psi annular preventer and a 5,000 psi dual ram BOP will be used while drilling. Several DST's may be run. No H2S is expected.

²³ I hereby certify that the information given above is true and complete to the best of my knowledge and belief.

Signature: *Larry N. Brazile*

Printed name: Larry N. Brazile

Title: Petroleum Engineer

Date: September 15, 2003

Phone: 432-683-3344

OIL CONSERVATION DIVISION

Approved by: *Paul J. [Signature]*

Title:

PETROLEUM ENGINEER

Approval Date: SEP 16 2003 Expiration Date:

Conditions of Approval:

Attached

Permit Expires 1 Year From Approval
Date Unless Drilling Underway
Re-entry

District I
1625 N. French Dr., Hobbs, NM 88240

District II
1301 W. Grand Avenue, Artesia, NM 88210

District III
1000 Rio Brazos Rd., Aztec, NM 87410

District IV
1220 S. St. Francis Dr., Santa Fe, NM 87505

State of New Mexico
Energy, Minerals & Natural Resources Department
OIL CONSERVATION DIVISION
1220 South St. Francis Dr.
Santa Fe, NM 87505

Form C-102
Revised August 15, 2000
Submit to Appropriate District Office
State Lease - 4 Copies
Fee Lease - 3 Copies

☐ AMENDED REPORT

WELL LOCATION AND ACREAGE DEDICATION PLAT

¹ API Number 30-025-26593	² Foot Code 85215	³ Pool Name Shoe Bar Mississippian
⁴ Property Code 6280	⁴ Property Name Uno Mas	⁶ Well Number 1
⁷ OGRID No. 24010	⁸ Operator Name V-F Petroleum Inc.	⁹ Elevation 3,936'

¹⁰ Surface Location

UL or lot no.	Section	Township	Range	Lot Idn	Feet from the	North/South line	Feet from the	East/West line	County
C	12	17S	35E		660	N	1,980	W	Lea

¹¹ Bottom Hole Location If Different From Surface

UL or lot no.	Section	Township	Range	Lot Idn	Feet from the	North/South line	Feet from the	East/West line	County

¹² Dedicated Acres 320 N/2	¹³ Joint or Infill N	¹⁴ Consolidation Code	¹⁵ Order No.
--	------------------------------------	----------------------------------	-------------------------

NO ALLOWABLE WILL BE ASSIGNED TO THIS COMPLETION UNTIL ALL INTERESTS HAVE BEEN CONSOLIDATED OR A NON-STANDARD UNIT HAS BEEN APPROVED BY THE DIVISION

				<p>¹⁷ OPERATOR CERTIFICATION</p> <p>I hereby certify that the information contained herein is true and complete to the best of my knowledge and belief.</p> <p><i>Larry N. Brazile</i> Signature</p> <p>Larry N. Brazile Printed Name</p> <p>Petroleum Engineer</p> <p>Title</p> <p>September 15, 2003 Date</p>	
				<p>¹⁸ SURVEYOR CERTIFICATION</p> <p>I hereby certify that the well location shown on this plat was plotted from field notes of actual surveys made by me or under my supervision, and that the same is true and correct to the best of my belief.</p> <p>Date of Survey</p> <p>Signature and Seal of Professional Surveyor:</p> <p>Certificate Number</p>	
	T17S Section	R35E 12		<div style="border: 1px solid black; padding: 5px; width: fit-content;"> 320 Acre Proration Unit </div>	

LITIGATION 1-1-65

All dimensions must be from the outer boundaries of the Section.

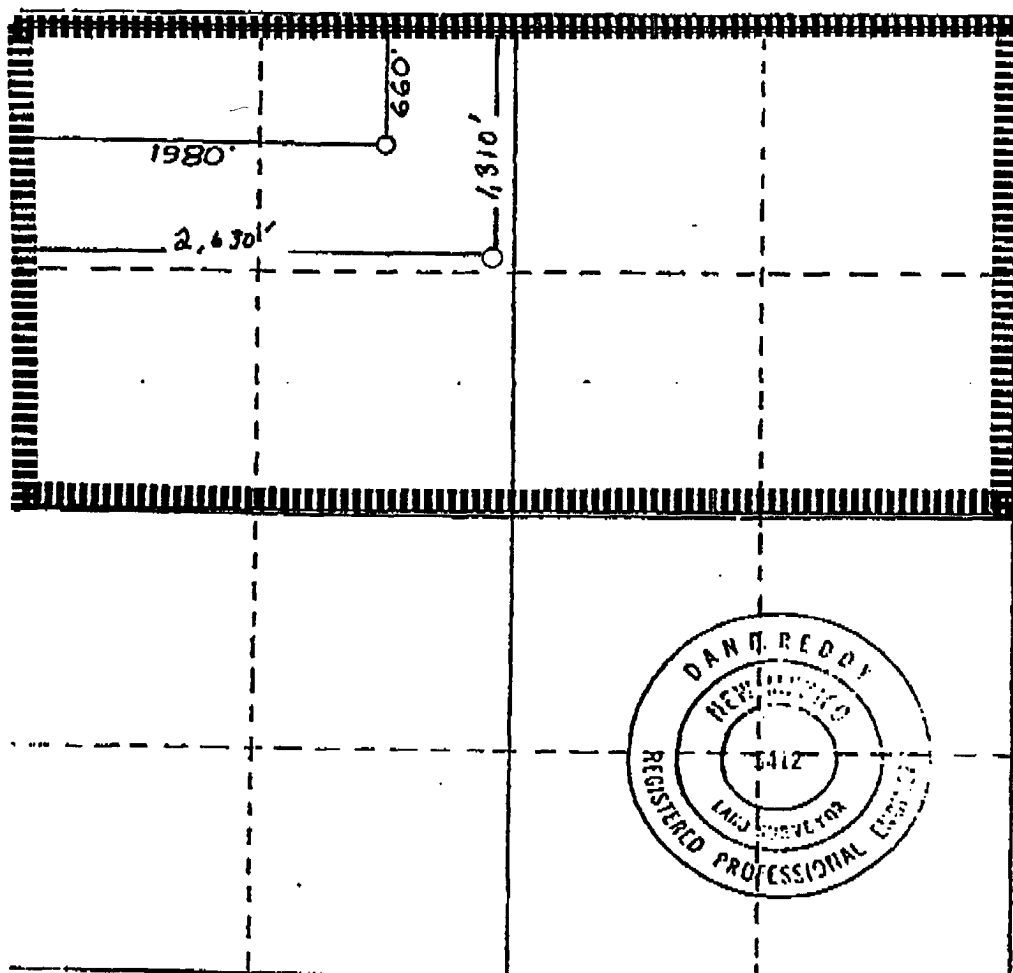
Manzano Oil Corporation			Lease Manzano MS Apple		Well No. 1
Section	Township	Range	County		
C	12	17 South	35 East Lea		
Actual Well Location of Well					
660	feet from the North	line and	1930	feet from the West	line
3936.3	feet from the North	line and	Wildcat	feet from the West	line

1. Outline the acreage dedicated to the subject well by colored pencil or hatchure marks on the plat below.
2. If more than one lease is dedicated to the well, outline each and identify the ownership thereof (both as to working interest and royalty).
3. If more than one lease of different ownership is dedicated to the well, have the interests of all owners been consolidated by communitization, unitization, force-pooling, etc?

☐ Yes ☐ No If answer is "yes," type of consolidation _____

If answer is "no," list the owners and tract descriptions which have actually been consolidated. (Use reverse side of this form if necessary.) _____

No allowable will be assigned to the well until all interests have been consolidated (by communitization, unitization, forced-pooling, or otherwise) or until a non-standard unit, eliminating such interests, has been approved by the Commission.



CERTIFICATION

I hereby certify that the information contained herein is true and complete to the best of my knowledge and belief.

Name

Position
Production Clerk

Company
Manzano Oil Corporation

Date
2/10/86

I hereby certify that the well location shown on this plat was plotted from field notes of actual surveys made by me or under my supervision, and that the same is true and correct to the best of my knowledge and belief.

Date Surveyed

Nov. 14, 1979

Registered Professional Engineer
and/or Land Surveyor

Dan R. Reddy
Certification No.

NM PE&LS #5412