

Submit 3 Copies To Appropriate District  
Office  
District I  
1625 N. French Dr., Hobbs, NM 87240  
District II  
1301 W. Grand Ave., Artesia, NM 88210  
District III  
1000 Rio Brazos Rd., Aztec, NM 87410  
District IV  
1220 S. St. Francis Dr., Santa Fe, NM 87505

State of New Mexico  
Energy, Minerals and Natural Resources

Form C-103  
May 27, 2004

OIL CONSERVATION DIVISION  
1220 South St. Francis Dr.  
Santa Fe, NM 87505

WELL API NO. 30-025-01216
5. Indicate Type of Lease STATE <input checked="" type="checkbox"/> FEE <input type="checkbox"/>
6. State Oil & Gas Lease No.
7. Lease Name or Unit Agreement Name: State E
8. Well Number 1
9. OGRID Number 162928
10. Pool name or Wildcat Saunders Permo Upper Penn

**SUNDRY NOTICES AND REPORTS ON WELLS**  
(DO NOT USE THIS FORM FOR PROPOSALS TO DRILL OR TO DEEPEN OR PLUG BACK TO A DIFFERENT RESERVOIR. USE "APPLICATION FOR PERMIT" (FORM C-101) FOR SUCH PROPOSALS.)

1. Type of Well: Oil Well <input checked="" type="checkbox"/> Gas Well <input type="checkbox"/> Other
2. Name of Operator Energen Resources Corporation
3. Address of Operator 3300 N. A St., Bldg. 4, Ste. 100 Midland, TX 79705
4. Well Location Unit Letter <u>A</u> : <u>660</u> feet from the <u>North</u> line and <u>660</u> feet from the <u>East</u> line Section <u>03</u> Township <u>15S</u> Range <u>33E</u> NMPM County <u>Lea</u>
11. Elevation (Show whether DR, RKB, RT, GR, etc.) 4206' DF
Pit or Below-grade Tank Application <input type="checkbox"/> or Closure <input type="checkbox"/>
Pit type _____ Depth to Groundwater _____ Distance from nearest fresh water well _____ Distance from nearest surface water _____
Pit Liner Thickness: _____ mil Below-Grade Tank: Volume _____ bbls; Construction Material _____

12. Check Appropriate Box to Indicate Nature of Notice, Report, or Other Data

NOTICE OF INTENTION TO:

PERFORM REMEDIAL WORK ☐ PLUG AND ABANDON ☒  
TEMPORARILY ABANDON ☐ CHANGE PLANS ☐  
PULL OR ALTER CASING ☐ MULTIPLE COMPLETION ☐  
OTHER: ☐

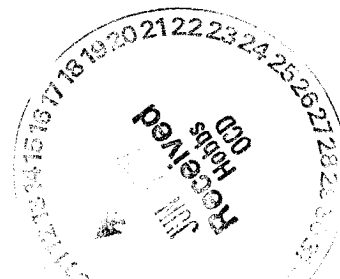
SUBSEQUENT REPORT OF:

REMEDIAL WORK ☐ ALTERING CASING ☐  
COMMENCE DRILLING OPNS. ☐ PLUG AND ABANDONMENT ☐  
CASING TEST AND CEMENT JOB ☐  
OTHER: ☐

13. Describe proposed or completed operations. (Clearly state all pertinent details, and give pertinent dates, including estimated date of starting any proposed work). SEE RULE 1103. For Multiple Completions: Attach wellbore diagram of proposed completion or recompletion.

See attached procedure.

**THE OIL CONSERVATION DIVISION MUST  
BE NOTIFIED 24 HOURS PRIOR TO THE  
BEGINNING OF PLUGGING OPERATIONS.**



I hereby certify that the information above is true and complete to the best of my knowledge and belief. I further certify that any pit or below-grade tank has been/will be constructed or closed according to NMOCD guidelines ☐ , a general permit ☐ or an (attached) alternative OCD-approved plan ☐

SIGNATURE Carolyn Larson TITLE Regulatory Analyst DATE 6-8-07

Type or print name Carolyn Larson

E-mail address: clarson@energen.com  
Telephone No. (432) 684-3693

For State Use Only

APPROVED BY Larry W. Wink TITLE OC FIELD REPRESENTATIVE II/STAFF MANAGER DATE JUN 12 2007

Conditions of Approval, if any:

# **ENERGEN RESOURCES CORPORATION**

## **State E #1**

660' FNL and 660' FEL  
Sec 3, T-15-S, R-33-E  
Lea, Co. NM  
Saunders San Andres Field  
**P&A well**

1. MIRU Pulling Unit
2. Install BOPE
3. Dump 2 sx cement on top of cement retainer at 4750'.
4. RIH w/2-7/8" tubing. Tag cement. Circulate hole w/9 #/gal plugging mud to 3800'.
5. Set cement plug from 3900 to 3800'.
6. Tag cement plug. Circulate hole w/9 #/gal plugging mud to 3040'.
7. Perforate casing at 3140' w/4 squeeze holes.
8. RIH w/pkr and set at 3040'.
9. Squeeze the cement through perms at 3140 back up to 3040'. POOH w/pkr.
10. RIH w/tbg. Tag cement plug. Circulate 9 #/gal plugging mud to 1150'.
11. Set cement plug from 1250 to 1150'.
12. Tag cement plug. Circulate 9 #/gal plugging mud to 246'.
13. Perforate casing at 346' w/4 squeeze holes.
14. RIH w/pkr and set at 246'.
15. Squeeze the cement through perms at 346' back up to 246'. POOH w/pkr.
16. RIH w/tbg. Tag cement plug.
17. Circulate mud to surface. POOH.
18. Perforate casing at 70' w/4 squeeze holes.
19. Squeeze the cement through perms at 70' back up to surface.
20. Cut off wellhead 3' from surface and well on P&A marker.
21. RD pulling unit.

# ENERGEN RESOURCES CORPORATION

## State E #1

660' FNL and 660' FEL  
Sec 3, T-15-S, R-33-E  
Lea, Co. NM  
Saunders San Andres Field  
P&A well

Date: May 21, 2007

AFE No: PB052507

Cost: \$40,000

WI: 100.00%

NRI: 72.19%

TD: 9933'

PBTD: 5675' (CIBP)

KB: 4201'

GL: 4194'

Surface Casing: 13-3/8" 36#/ft, J-55 at 296'.  
Cemented w/225 Class C sx.

Intermediate Casing: 8-5/8" 36#/ft, N-80 Surf-141'  
36#/ft, J-55 141-2173'  
32#/ft, J-55 2173-3090'  
Cemented w/1000 sx Lone Star and Trinity regular.  
TOC @ 1745'

Production Casing: 5-1/2" 17#/ft, N-80 Surf to 2095'  
J-55 2095 to 9933'  
Cemented w/600 Trinity Inferno. TOC at 6181'  
Squeeze Hole @ 5965' w/ ??? sx, TOC 3926' by CBL

Tubing: None

Perforations: San Andres: 5628-44, 5604-18, 5592-98, 5572-80, 5550-58 156 holes @ 4 SPF  
CICR @ 5583'  
5490-5518 84 holes @ 4 SPF  
CICR @ 5432'  
5318-38, 5288-5309 123 hole @ 4 SPF  
CICR @ 5242'  
4900-16 48 holes @ 4 SPF  
CICR @ 4878'  
4836-46, 4808-24, 4780-94 120 holes @ 4 SPF  
CICR @ 4750'  
Pennsylvanian: 9535-50 31 holes at 2 SPF  
9562-9612 41 holes at 2 SPF  
CIBP at 9700' w/20' cement  
CIPB at 5675'  
Permo-Penn: 9728-44 64 Holes at 4 SPF  
9750-76 104 Holes at 4 SPF  
9808-28 80 Holes at 4 SPF  
9833-55 44 Holes at 2 SPF  
9858-90 128 Holes at 4 SPF  
9905-15 20 Holes at 2 SPF  
9923-27 8 Holes at 2 SPF

# ENERGEN RESOURCES CORPORATION

State "E" #1

Current Condition: P&A approval  
30-May-2007

Spud Date:

GL Elevation: 4194'

KB Elevation: 4201'

Location: 660' FNL & 660' FEL,

Sec 3, T-15-S, R-33-E  
Lea County, NM

**Surface Casing:**  
13-3/8" 36#, J-55  
@ 296' in 17-1/2" hole  
W/225 sx Class C cmt

**Intermediate Casing:**  
8-5/8" 32 & 36#, J-55 & N-80  
@ 3090' in 11" hole  
Cmt w/1000 Sx cmt  
TOC @ 1745'

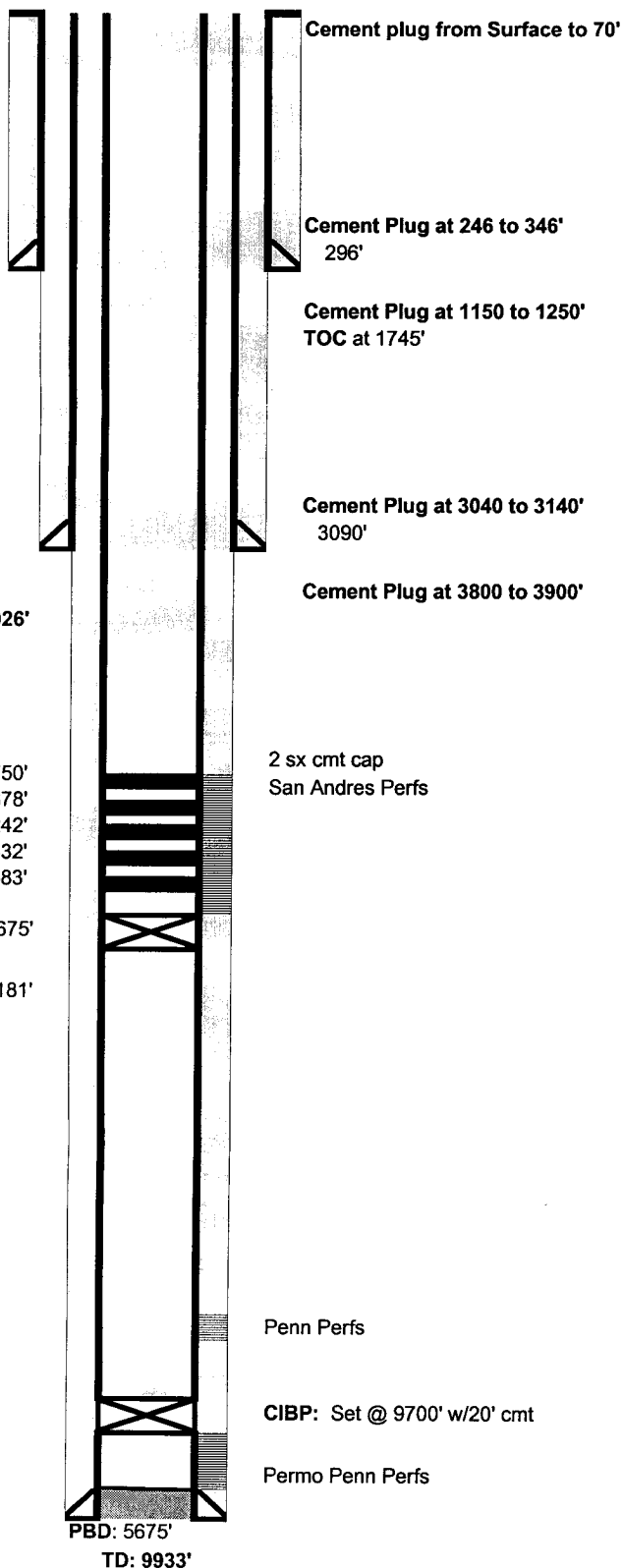
TOC after Sqz @ 3926'

CICR @ 4750'  
CICR @ 4878'  
CICR @ 5242'  
CICR @ 5432'  
CICR @ 5583'

CIBP: Set @ 5675'

TOC @ 6181'

**Production Casing:**  
5-1/2" 17# N-80 & J-55  
@ 9933', Cmt w/ 600 sx Cmt  
TOC @ 6181  
Cmt Sqz Hole @ 5965'  
TOC @ 3926' by CBL



**San Andres Perfs:** 4780'-4794', 4808-4824',  
4836'-4846', 120 Holes, 4 spf  
CICR @ 4750'  
4900'-4916', 48 Holes, 4 spf  
CICR @ 4878'  
5288'-5309', 5318'-5338', 123  
Holes, 4 spf, CICR @ 5242'  
5490'-5518', 84 Holes, 4 spf  
CICR @ 5432'  
5550'-5558', 5572'-5580',  
5592'-5598', 5604'-5618',  
5628'-5644' 156 Holes, 4 spf  
CICR @ 5583'

**Pennsylvanian Perfs:** 9535'-9550', 31 Holes, 2 spf  
9562'-9612', 41 Holes, 2 spf  
**Permo Penn Perfs:** 9728'-9744', 64 Holes, 4 spf

9750'-9776', 104 Holes, 4 spf  
9808'-9828', 80 Holes, 4 spf  
9833'-9855', 44 Holes, 2 spf  
9858'-9890', 128 Holes, 4 spf  
9905'-9915', 20 Holes, 2 spf  
9923'-9927', 8 Holes, 2 spf

2 sx cmt cap  
San Andres Perfs

Penn Perfs

CIBP: Set @ 9700' w/20' cmt

Permo Penn Perfs