

District I
1625 N. French Dr., Hobbs, NM 88240
District II
1301 W. Grand Avenue, Artesia, NM 88210
District III
1000 Rio Brazos Road, Aztec, NM 87410
District IV
1220 S. St. Francis Dr., Santa Fe, NM 87505

State of New Mexico
Energy Minerals and Natural Resources

Form C-144
June 1, 2004

Oil Conservation Division
1220 South St. Francis Dr.
Santa Fe, NM 87505

For drilling and production facilities, submit to
appropriate NMOCD District Office.
For downstream facilities, submit to Santa Fe
office

Pit or Below-Grade Tank Registration or Closure

Is pit or below-grade tank covered by a "general plan"? Yes ☐ No ☒

Type of action: Registration of a pit or below-grade tank ☐ Closure of a pit or below-grade tank ☒

Operator: COG Operating LLC Telephone: 432-685-4340 e-mail address: pedwards@conchoresources.com
Address: Fasken Center Tower II, 550 W. Texas Ave., Suite 1300, Midland, TX 79701
Facility or well name: Osudo 7 State #1 API #: 30-025-37557 U/L or Qtr/Qtr: B Sec: 7 T: 20S R: 36E
County: Lea Latitude: N 32° 35' 35" Longitude: W 103° 23' 30" NAD: 1927 ☐ 1983 ☐
Surface Owner: Federal ☐ State ☒ Private ☐ Indian ☐

Pit Type: Drilling <input checked="" type="checkbox"/> Production <input type="checkbox"/> Disposal <input type="checkbox"/> Workover <input type="checkbox"/> Emergency <input type="checkbox"/> Lined <input checked="" type="checkbox"/> Unlined <input type="checkbox"/> Liner type: Synthetic <input checked="" type="checkbox"/> Thickness 12 mil Clay <input type="checkbox"/> Pit Volume: 25,000 bbl	Below-grade tank Volume: _____ bbl Type of fluid: _____ Construction material: _____ Double-walled, with leak detection? Yes <input type="checkbox"/> If not, explain why not. _____	
Depth to ground water (vertical distance from bottom of pit to seasonal high water elevation of ground water.) 28	Less than 50 feet - X 50 feet or more, but less than 100 feet 100 feet or more	(20 points) 20 (10 points) (0 points)
Wellhead protection area: (Less than 200 feet from a private domestic water source, or less than 1000 feet from all other water sources.)	Yes No- X	(20 points) (0 points) 0
Distance to surface water: (horizontal distance to all wetlands, playas, irrigation canals, ditches, and perennial and ephemeral watercourses.)	Less than 200 feet 200 feet or more, but less than 1000 feet 1000 feet or more- X	(20 points) (10 points) (0 points) 0
Ranking Score (Total Points)		20 points

If this is a pit closure: (1) Attach a diagram of the facility showing the pit's relationship to other equipment and tanks. (2) Indicate disposal location: (check the onsite box if your are burying in place) onsite ☐ offsite ☒ If offsite, name of facility _____. (3) Attach a general description of remedial action taken including remediation start date and end date. (4) Groundwater encountered: No ☐ Yes ☐ If yes, show depth below ground surface _____ ft. and attach sample results.
(5) Attach soil sample results and a diagram of sample locations and excavations.

Additional Comments: Pit Closure Plan attached

I hereby certify that the information above is true and complete to the best of my knowledge and belief. I further certify that the above-described pit or below-grade tank has been/will be constructed or closed according to NMOCD guidelines ☒, a general permit ☐, or an (attached) alternative OCD-approved plan ☐.

Date: 6-14-2007 Agent for
Printed Name/Title Robert McNeill - COG Signature Robert McNeill

Your certification and NMOCD approval of this application/closure does not relieve the operator of liability should the contents of the pit or tank contaminate ground water or otherwise endanger public health or the environment. Nor does it relieve the operator of its responsibility for compliance with any other federal, state, or local laws and/or regulations.

Approval:
Printed Name/Title GARY W. WINK / STAFF MGR Signature Gary W. Wink Date: 6/19/07

Pit Closure Plan – Drilling Pit

Operator: COG Operating LLC

Well Name: Osudo 7 State #1

Location: Unit B, Section 7, Township 20 S, Range 36 E, Lea County, NM

The drilling pit associated with this well will be closed as per New Mexico OCD "Pit and Below-Grade Tank Guidelines" dated November 1, 2004. The visual inspection of the pit indicated that the pit liner has maintained its integrity.

1. Any remaining liquids will be removed from the pit.
2. All pit contents, including pit liner, will be excavated and disposed of at an off-site OCD approved disposal facility.
3. Soil sampling will be performed at the excavated pit area for delineation of chlorides in soils to 250 ppm. Soil samples will be taken from each of the (4) corners and (1) from the center of the pit until the chlorides are vertically delineated to 250 ppm. These samples will be screened using field chloride test kits. The final confirmation samples (5 total samples) will be submitted for laboratory analysis. The laboratory results will be submitted to the OCD District office.
4. Upon approval from the OCD District office, the excavated pit area will be backfilled with clean material and top 3 feet of soil that is capable of supporting native plant growth.
5. Upon closure of the pit, the surface where the pit was located will be contoured to prevent erosion and ponding of rainwater over the site.

Water Well Data
Average Depth to Groundwater (ft)
COG - Osudo "7" State #1, Lea County, New Mexico

19 South 35 East

6	61	5	4	3	2	1
58	63	70				63
7	8	9	20	10	11	12
51	18			53		
18	17	26	16	15	26	14
	30					27
19	20	21	22	23	24	20
			27			
30	29	28	27	26	25	
31	32	33	34	35	36	

19 South 36 East

6	5	4	3	2	1	
7	8	9	10	11	12	
18	17	16	15	14	13	
19	20	21	22	23	24	
30	29	28	27	26	25	
31	32	33	34	35	36	

19 South 37 East

6	5	4	3	2	1	
7	8	9	10	11	12	
18	17	16	15	14	13	
19	20	21	22	23	24	
30	29	28	27	26	25	
31	32	33	34	35	36	

20 South 35 East

6	56	5	64	4	3	2	1
64							
7	8	9	10	11	12		
							49
18	17	16	15	14	13		
19	20	21	22	23	24		
30	29	28	27	26	25		
31	65	32	33	89	34	35	36

20 South 36 East

6	32	5	4	3	2	92	1
	28						40
7	Site	8	9	38	10	11	12
		33				32	29
18	17	16	15	14	13		
34					45		
19	20	21	22	23	24		
30	29	28	27	26	106	25	
31	32	33	34	35	170	36	
	170				122		

20 South 37 East

6	5	4	3	2	1		
7	8	9	10	11	12		
18	17	16	15	14	13		
19	20	21	22	23	24		
30	29	28	27	26	25		
31	32	33	34	35	36		

21 South 34 East

6	5	4	3	2	1		
7	8	9	10	11	12		
18	17	16	15	14	13		
19	20	21	22	23	24		
30	29	28	27	26	25		
31	32	33	34	35	36		

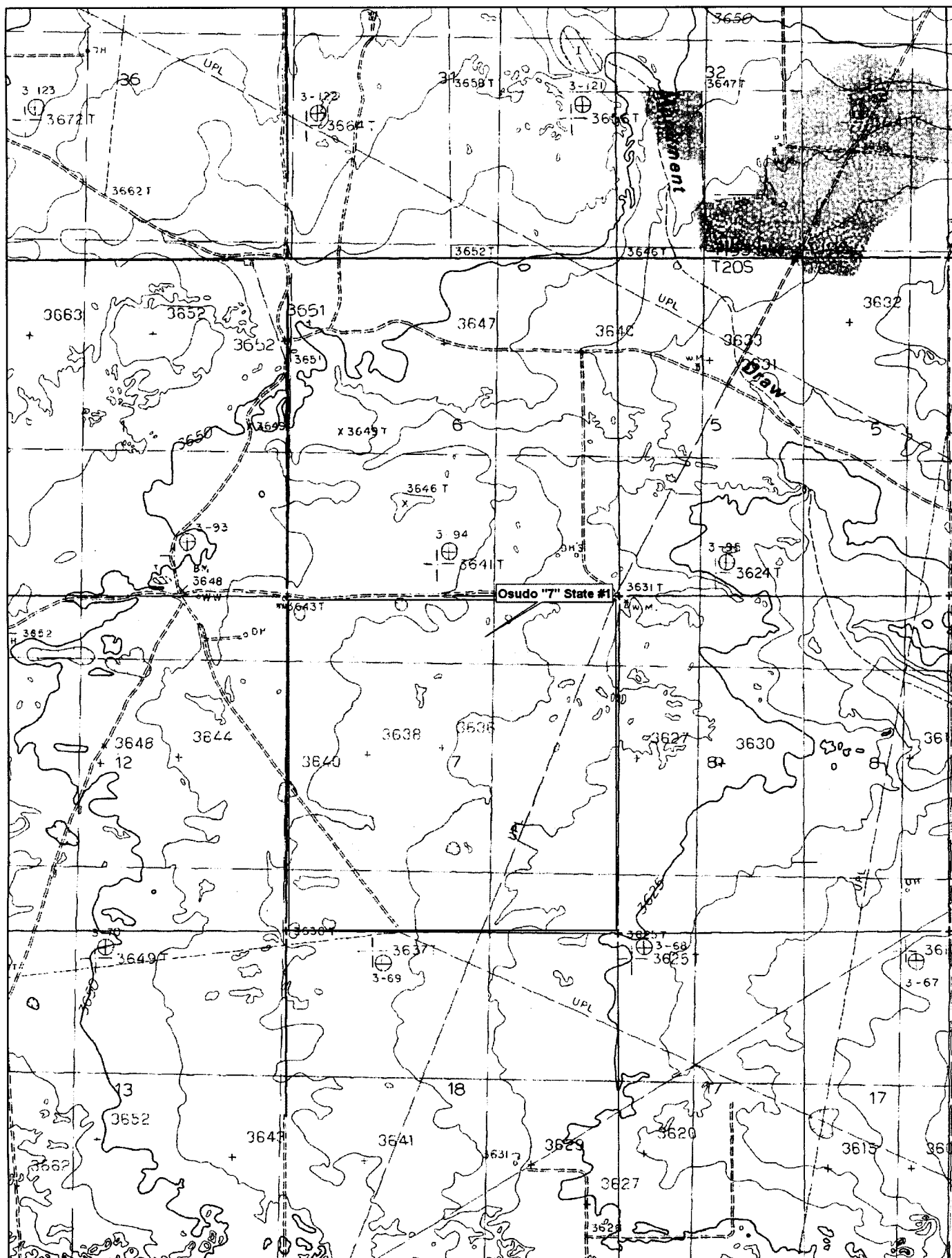
21 South 35 East

6	5	4	3	2	1		
7	8	9	10	11	12		
18	17	16	15	14	13		
19	20	21	22	23	24		
30	29	28	27	26	25		
31	32	33	34	35	36		

21 South 36 East

6	5	4	3	2	1		
7	8	9	10	11	12		
18	17	16	15	14	13		
19	20	21	22	23	24		
30	29	28	27	26	25		
31	32	33	34	35	36		

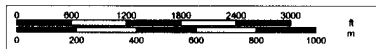
- 88 New Mexico State Engineers Well Reports
- 105 USGS Well Reports
- 90 Geology and Groundwater Conditions in Southern Lea, County, NM (Report 6)
- Geology and Groundwater Resources of Eddy County, NM (Report 3)
- 34 NMOCD - Groundwater Data



DeLORME

© 2002 DeLorme, 3-D TopoQuads ©. Data copyright of content owner.
www.delorme.com

Scale 1 : 25,000
1" = 2080 ft



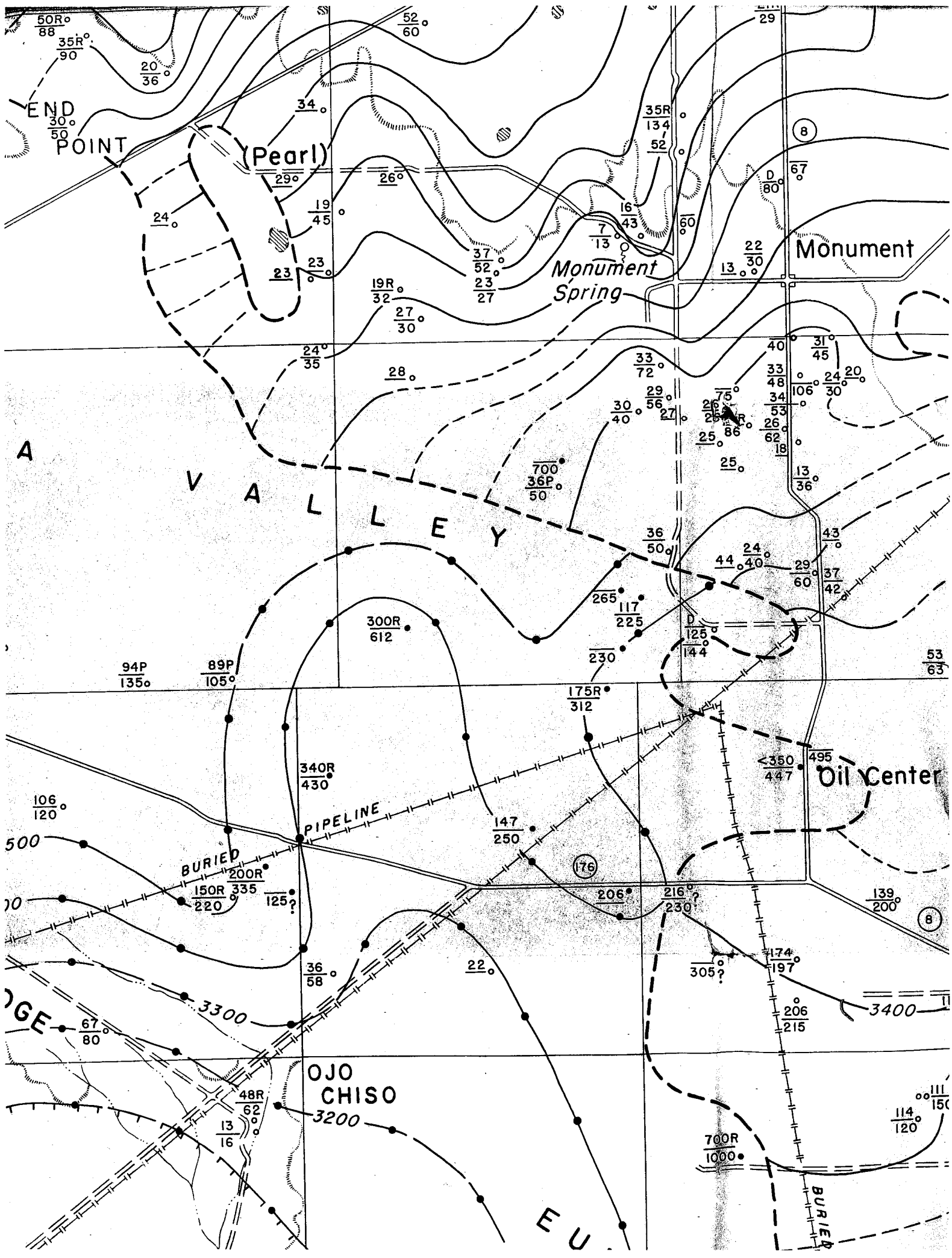


TABLE 6. RECORDS OF WELLS IN SOUTHERN LEA COUNTY, N. MEX. (continued)

Location No.	Owner	Aquifer	Depth of well (feet)	Altitude of well (feet)	Water level			Year completed	Surface diam-eter of wells of lift	Method Use of water	Remarks
					Depth be-low land surface (feet)	Date measured	Surface diam-eter of wells of lift				
20.36.5.321	—	Qal	—	3,635	28.3	11-16-53	6	—	Lw	S	—
12.141	—	Qal	—	3,550	29.5	3-25-54	—	—	Lw	S	—
12.222	Sunray Oil Co.	Qal	56	3,560	29.0	3-30-54	7	—	Lw	L	Water not potable.
20.36.15.222	Continental Oil Co.	Tr	700	3,575	—	—	—	—	Li	D	—
15.421	H. S. Record	Qal	50	3,575	35.7	3-30-54	8½	1938	Lw	S	Water not potable. MWP. Chemical analysis in table 8.
24.423	—	Qal	50 ± M	3,540	36.4	3-25-54	7	—	Lw	In	Water used to soak wooden tanks.
25.312	Stanolind Oil and Gas Co.	Tr	225	3,550	117.3	3-25-54	6	—	Lw	D	—
26.244	Amerada Oil Co.	Tr	265	3,555	—	—	7½	—	Li	In	Water used for oil well drilling.
32.112	Leo Sims	Tr	612	3,640	300	4-15-54	—	—	Lw	S	—
35.244	Humble Oil Co.	Tr	230	3,550	—	—	—	1938	—	In	Federal Fopeano well 2. EY 18 gpm.
20.27.3.341	—	Qal	—	3,560	19.5	4-1-54	7½	—	Lw	S	Water not potable.
20.37.4.111	Jim Cooper	Qal	40	3,560	—	—	—	—	Je	L	Chemical analysis in table 8.
4.221	Nolan and Lane	Qal	45	3,555	31.4	4-2-54	6	1940	Lw	D	Chemical analysis in table 8.
4.314	—	Qal	48M	3,550	32.8	4-2-54	8	—	N	N	—
4.341	Humble Oil Co.	Qal	106	3,550	—	—	—	1935	—	—	Plugged and abandoned.
4.444	—	Qal	30 ± M	3,560	23.5	4-1-54	8	—	N	N	—
5.333	Amerada Oil Co.	Qal	75	3,555	—	—	7	1954	Ti	In	WBZ 35-65 feet.
7.133	—	Qal	—	3,555	27.1	3-29-54	8½	—	N	N	—
7.241	—	Qal	28.5M	3,550	26.4	3-29-54	8½	—	N	N	About 70 feet northwest of windmill.
7.434	—	Qal	—	3,540	25.2	3-30-54	8½	—	Lw	S	MWP
8.321	Amerada Oil Co.	Qal	86	3,550	30	1-23-54	7	1954	Ti	In	Reportedly had no measurable draw-down at 50 gpm.
20.37.8.424	Tidewater Oil Co.	Qal	62	3,545	25.9	3-22-54	—	—	Li	D	EY less than 1 gpm.
9.110	W. H. Laughlin	Qal	53	3,558	34.0	11-16-53	4 × 6 ft.	—	N	O	—
9.331	Skelly Oil Co.	Qal	—	3,545	18.0	3-22-54	7	—	N	N	—
13.321	Earl Komegay	Qal(?)	78M	3,545	75.7	4-2-54	—	—	Lw	S	—
16.144	—	Qal	36M	3,525	13.2	2-8-53	6	—	N	N	—

19.36.5.233	To	Tom Green	60	3,815	52.3	7-28-54	—	—	—	Lw	D,S	Uncased shothole.
19.313	Qal	—	44.6M	3,685	18.6	11-16-53	—	—	—	N	N	EY 10 gpm. PR
20.111	Qal	Tom Green	—	3,695	25.7	7-28-54	—	—	—	Lw	S	Northwest well of six. Chemical analysis in table 8.
25.123	To	—	43M	3,680	16.0	3-18-54	—	6	—	N	N	At Monument Spring.
19.36.26.224	Qal	J. E. Weir	12.7M	3,650	6.7	5-7-54	—	4×5 ft.	—	N	N	Chemical analysis in table 8.
28.422	To	Mrs. Abi Hall	52M	3,720	35.6	3-18-54	—	7	—	N	N	Chemical analysis in table 8.
28.441	To	do.	27M	3,680	22.7	3-18-54	—	6	—	N	N	Monument District Camp. WBZ 67-108 feet, 112-125 feet. EY 385 gpm.
32.110	Qal	S. P. Jordan	32	3,645	19	11-20-29	—	—	—	N	N	Plugged and abandoned.
32.324	Qal	—	30	3,630	27.2	7-28-54	—	4×4 ft.	—	Lw	N	State "D" well 2. EY 30 gpm.
19.37.4.110	To	V. Linam	29	3,680	21	9-19-29	—	—	—	—	—	MWP
18.111	To	Amerada Oil Co.	134	3,705	35	9-47	1947	10¾	—	Ti	D	—
18.331	To	EPNG	—	3,710	51.9	3-18-54	—	10	—	N	N	Chemical analysis in table 8.
20.242	To	Humble Oil Co.	80	3,660	Dry	—	1937	—	—	N	N	Plugged and abandoned.
21.132	To	do.	67	3,635	—	—	1937	—	—	N	N	State "D" well 2. EY 30 gpm.
19.37.25.422	To	—	—	3,600	40	4-6-54	—	—	—	Lw	S	—
29.333	Qal	Hobbs School district	30±	3,595	13.3	7-28-54	—	7	—	Lw	D	—
29.344	Qal	—	30±	—	21.5	3-23-60	—	8	—	Te	P	—
29.344a	Qal	do.	30±	—	—	—	—	6	—	Te	P	Chemical analysis in table 8.
30.113	Qal	Continental Oil Co.	60	3,660	—	—	—	—	—	Te	D	Pumps dry in summer.
20.32.1.322	Qal	W. M. Snyder	30	3,510	21.8	7-1-54	—	6	—	Li	S	Water not potable.
18.233	Tr	Freepert Sulfur Co.	400	3,450	89.2	3-24-54	1954	8	—	Li	In	WBZ 215-243 feet.
27.144	Qal	Joel Frey	25	3,545	12.3	6-11-54	—	—	—	Lw	N	Located in sink.
30.142	Qal	—	—	3,530	9.9	6-11-54	—	8½	—	N	N	West well of three.
36.214	Qal	Mrs. Bingham	60	3,588	46.6	6-6-55	1950	7¼	—	Lw	D	—
20.33.15.221	Tr	—	—	3,570	336.1	4-20-55	—	4	—	Li	N	—
24.122	Tr	D. C. Berry	700±	3,630	300±	—	—	10	—	Lw	S	—
20.34.17.334	Tr	Mark Smith	200	3,635	140	7-1-54	1940	10	—	Lw	S	MWP
22.223	Tr	D. C. Berry	235	3,655	—	—	—	10	—	Lw	S	—
20.35.1.221	Qal	J. L. Wood	35	3,655	24.5	11-16-53	—	4×4 ft.	—	N	O	—
31.113	To	Leo Sims	85	3,740	68.4	6-25-54	—	6	—	Lw	S	PR
33.433	To	do.	135	3,700	94.1	6-25-54	—	7	—	Lw	S	MWP
35.333	To	do.	105	3,690	88.9	4-15-54	—	—	—	Lw	D,S	MWP Southeast well of two.
20.36.1.412	Qal	Amerada Oil Co.	72M	3,565	33.1	3-30-54	—	7	—	N	N	—

New Mexico Office of the State Engineer
POD Reports and Downloads

Township: 20S Range: 36E Sections:

NAD27 X: Y: Zone: Search Radius:

County: Basin: Number: Suffix:

Owner Name: (First) (Last) ☐ Non-Domestic ☐ Domestic
☒ All

POD / Surface Data Report

Avg Depth to Water Report

Water Column Report

Clear Form

iWATERS Menu

Help

AVERAGE DEPTH OF WATER REPORT 10/17/2006

Bsn	Tws	Rng	Sec	Zone	X	Y	Wells	(Depth Water in Feet)		
								Min	Max	Avg
L	20S	36E	01				1	40	40	40
L	20S	36E	02				2	92	92	92
L	20S	36E	09				2	38	38	38
L	20S	36E	14				5	20	53	45
L	20S	36E	18				2	34	34	34
L	20S	36E	26				2	170	170	170

Record Count: 14