

Submit 3 Copies To Appropriate District Office

District I

1625 N. French Dr., Hobbs, NM 88240

District II

1301 W. Grand Ave., Artesia, NM 88210

District III

1000 Rio Brazos Rd., Aztec, NM 87410

District IV

1220 S. St. Francis Dr., Santa Fe, NM 87505

State of New Mexico
Energy, Minerals and Natural Resources

OIL CONSERVATION DIVISION
1220 South St. Francis Dr.
Santa Fe, NM 87505

Form C-103

Revised March 25, 1999

| | | |
|--|--|---|
| SUNDRY NOTICES AND REPORTS ON WELLS (DO NOT USE THIS FORM FOR PROPOSALS TO DRILL OR TO DEEPEN OR PLUG BACK TO A DIFFERENT RESERVOIR. USE "APPLICATION FOR PERMIT" (FORM C-101) FOR SUCH PROPOSALS.) | | WELL API NO. 30-025-22490 |
| 1. Type of Well: Oil Well <input checked="" type="checkbox"/> Gas Well <input type="checkbox"/> Other <input type="checkbox"/> | | 5. Indicate Type of Lease STATE <input checked="" type="checkbox"/> FEE <input type="checkbox"/> |
| 2. Name of Operator ConocoPhillips Co. | | 6. State Oil & Gas Lease No. B-4118 |
| 3. Address of Operator 4001 Penbrook, Odessa, TX 79762 | | 7. Lease Name or Unit Agreement Name: Lea |
| 4. Well Location Unit Letter P : 510 feet from the South line and 810 feet from the East line Section 30 Township 17-S Range 34-E NMPM Lea County | | 8. Well No. 23 |
| 10. Elevation (Show whether DR, RKB, RT, GR, etc.) 4083 GL | | 9. Pool name or Wildcat Vacuum Grayburg/San Andres |

11. Check Appropriate Box to Indicate Nature of Notice, Report or Other Data

NOTICE OF INTENTION TO:

PERFORM REMEDIAL WORK ☐ PLUG AND ABANDON ☒

TEMPORARILY ABANDON ☐ CHANGE PLANS ☐

PULL OR ALTER CASING ☐ MULTIPLE COMPLETION ☐

OTHER: ☐

SUBSEQUENT REPORT OF:

REMEDIAL WORK ☐ ALTERING CASING ☐

COMMENCE DRILLING OPNS. ☐ PLUG AND ABANDONMENT ☐

CASING TEST AND CEMENT JOB ☐

OTHER: ☐

12. Describe proposed or completed operations. (Clearly state all pertinent details, and give pertinent dates, including estimated date of starting any proposed work). SEE RULE 1103. For Multiple Completions: Attach wellbore diagram of proposed completion or recompilation.

See attached procedure and wellbore diagram.

THE COMMISSION MUST BE NOTIFIED 24 HOURS PRIOR TO THE BEGINNING OF PLUGGING OPERATIONS FOR THE C-103 TO BE APPROVED.



I hereby certify that the information above is true and complete to the best of my knowledge and belief.

SIGNATURE James F. Newman TITLE Engineer DATE 09/22/03

Type or print name James F. Newman, P.E.

Telephone No. 432-687-1994

(This space for State use)

APPROVED BY Hay W. Wink DISTRICT SUPERVISOR/GENERAL MANAGER DATE SEP 26 2003
Conditions of approval, if any:

ConocoPhillips

Proposed Plugging Procedure Page 1 of 1

Lea #23
Vacuum Grayburg San Andres Field
Lea County, New Mexico

See attached wellbore diagrams for wellbore configuration

SI producer. 20 jts 2-7/8" tubing in hole

- Notify OCD 24 hrs prior to move in, and 4 hrs prior to plugs
 - Hold daily tailgate safety meetings w/ crews
1. Set steel pit and flow well down as needed. Deliver 4,300' workstring to location.
 2. MIRU plugging equipment. ND wellhead and NU 6" 3,000# manual BOP. POOH standing back production tubing.
 3. RIH w/ gauge ring on sandline to 4,300'. POOH w/ gauge ring. If gauge ring runs, RIH w/ tubing-set CIBP to 4,300'. RU cementer and set CIBP. Load hole w/ plugging mud and pump 35 sx C cmt 4,300 – 4,200' on CIBP. If unable to run gauge ring, pump 45 sx C cmt w/ 2% CaCl₂ @ 4,350' and WOC/tag. **Grayburg / San Andres plug**
 4. POOH w/ tubing to 2,827'. Load hole w/ plugging mud and pump 35 sx C cmt 2,827 – 2,727'. POOH standing back 1,100' tbq. **Base of salt plug**
 5. RIH w/ wireline and perforate 8-5/8" casing @ 1,511'. POOH w/ wireline.
 6. RIH w/ 8-5/8" AD-1 packer to 1,100'. RU cementer and load hole w/ mud, set packer. Establish rate into perforations and squeeze 70 sx C cmt w/ 2% CaCl₂ 1,411 – 1,511'. WOC and tag this plug as directed by OCD. **Top of salt plug**
 7. RIH w/ wireline and perforate 8-5/8" casing @ 432'. POOH w/ wireline.
 8. RIH w/ 8-5/8" AD-1 packer to 200'. RU cementer and load hole w/ mud, set packer. Establish rate into perforations and squeeze 115 sx C cmt w/ 2% CaCl₂ 332 – 432'. WOC and tag this plug as directed by OCD. **Freshwater & surface casing shoe plug**
 9. POOH w/ tubing. ND BOP and NU wellhead.
 10. Pump 10 sx C cmt ~~60~~ to surface.
 11. SI well. RDMO. Clean steel pit and dispose of bottoms.
 12. Cut off wellhead and anchors, level location. Leave location clean and free of trash.

| | | | |
|---------------|----------------|---------------------|----------------|
| Field Name: | Vacuum GB/SA | | |
| County: | Lea | Well Type: | SI producer |
| State: | New Mexico | PBTD: | 5,986 |
| RRC District: | | Drilling Commenced: | April 3, 1968 |
| Section: | 30 | Drilling Completed: | August 7, 1968 |
| Block: | | Date Well Plugged: | |
| Survey: | T-17-S; R-34-E | Longitude: | |
| | | Latitude: | |
| | | Freshwater Depths: | |
| API #: | 42-025-22490 | | |
| Lease or ID: | B-4118 | | |

Casing

| Description | Size (inches) | Depth (feet) | TOC (feet) | Cement (sacks) | Hole Size (inches) |
|---------------|---------------|--------------|------------|----------------|--------------------|
| Surface: | 13-3/8" | 382 | Surface | 875 | 17-1/2" |
| Intermediate: | 8-5/8" | 5,378 | 2,200 | 900 | 11" |
| | | | | | |
| | | | | | |
| | | | | | |
| | | | | | |

Existing Plugs

| Description | Top (feet) | Depth (feet) | Volume (sacks) | Volume (cu ft) |
|--------------------|------------|--------------|----------------|----------------|
| 1 Cement (in 1972) | 5,222 | 6,180 | 160 | |
| | | | | |
| | | | | |
| | | | | |
| | | | | |
| | | | | |
| | | | | |
| | | | | |

Perforations

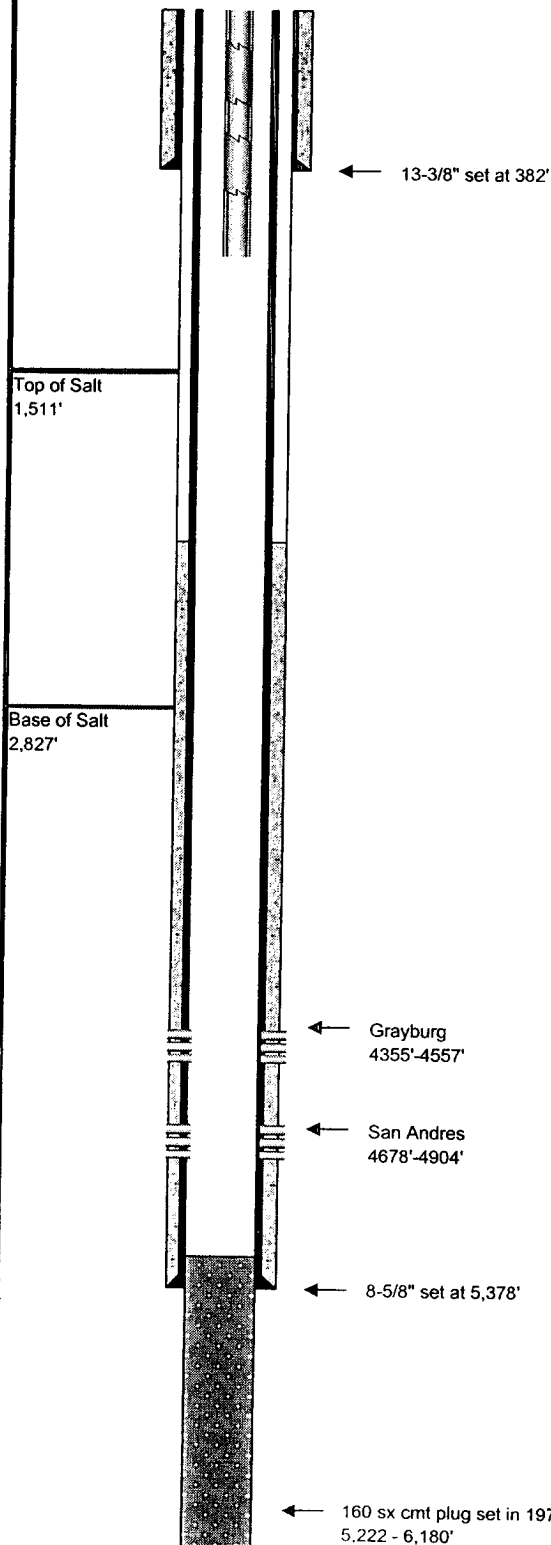
| Formation | Top (feet) | Depth (feet) |
|------------|------------|--------------|
| Grayburg | 4,355 | 4,557 |
| San Andres | 4,678 | 4,904 |
| | | |
| | | |
| | | |

Formations

| Name | Top of Formation |
|-------------|------------------|
| Top of Salt | 1,511 |
| | |
| | |
| | |
| | |

Comments

Original TD 13,623'. Plugged back to current configuration in 1972.
20 jts 2-7/8" in hole



Prepared By: Jim Newman
Date: 9/19/2003

← 25 sx cmt plug
0'-60'

← 13-3/8" set at 382'
115 sx cmt plug
332'-432'

← 70 sx cmt plug
1411'-1511'

Top of Salt
1,511'

Base of Salt
2,827'

← 35 sx cmt plug
2727'-2827'

← 35 sx cmt plug
4200'-4300'
← CIBP @ 4,300'

← Grayburg
4355'-4557'
← San Andres
4678'-4904'

← 8-5/8" set at 5,378'

← 160 sx cmt plug set in 1972
5,222 - 6,180'

Field Name: Vacuum GB/SA

County: Lea

Well Type:

SI producer

State: New Mexico

PBTD:

5,222

RRC District:

Drilling Commenced:

April 3, 1968

Section: 30

Drilling Completed:

August 7, 1968

Block:

Date Well Plugged:

Survey: T-17-S; R-34-E

Longitude:

Latitude:

Freshwater Depths:

API #: 42-025-22490

Lease or ID: B-4118

Casing

| Description | Size (inches) | Depth (feet) | TOC (feet) | Cement (sacks) | Hole Size (inches) |
|---------------|---------------|--------------|------------|----------------|--------------------|
| Surface: | 13-3/8" | 382 | Surface | 875 | 17-1/2" |
| Intermediate: | 8-5/8" | 5,378 | 2,200 | 900 | 11" |
| | | | | | |
| | | | | | |
| | | | | | |
| | | | | | |

Proposed Plugs

| Description | Top (feet) | Depth (feet) | Volume (sacks) | Volume (cu ft) |
|-------------------------------|-------------|--------------|----------------|----------------|
| 1 Cement | 5,222 | 6,180 | 160 | |
| 2 CIBP-Class C - Balanced | 4,300 | 4,302 | 0 | |
| 3 Cement-Class C - Balanced | 4,200 | 4,300 | 35 | 46.2 |
| 4 Cement-Class C - Balanced | 2,727 | 2,827 | 35 | 46.2 |
| 5 Cement-Class C - Sqz/Packer | 1,411 (tag) | 1,511 | 70 | 92.4 |
| 6 Cement-Class C - Sqz/Packer | 332 (tag) | 432 | 115 | 151.8 |
| 7 Cement-Class C - Balanced | surface | 60 | 25 | 33 |

Perforations

| Formation | Top (feet) | Depth (feet) |
|------------|------------|--------------|
| Grayburg | 4,355 | 4,557 |
| San Andres | 4,678 | 4,904 |
| | | |
| | | |
| | | |

Formations

| Name | Top of Formation |
|-------------|------------------|
| Top of Salt | 1,511 |
| | |
| | |
| | |
| | |

Comments

Prepared By:

Jim Newman

Date:

9/19/2003

ConocoPhillips - Permian Basin
August 20, 2003

Lease & Well No. Lea #23

Well Category: One Status : Shut in Producer
Area: New Mexico
Subarea: Maljamar Field : Vacuum Grayburg/San Andres
API Number: 30-025-22490
Legal Description 510' FSL, 810' FEL, Sec 30, T-17-S, R-34-E
Lea County, New Mexico
Spudded: 04/03/1968
Completed: 08/07/1968

Well History:

4/68 Perf'd Morrow 13224-38', 13370', 74', 96', 98', 13400', 02', 13506', 12' w/ 2 spf (44 holes) & 13306-10', 13322-26', 13342-46', 13378-96' w/ 1 spf (30 holes). Reperf'd Morrow 13223-37' & perf'd 13504-10' w/ 2 spf (40 holes). Reperf'd Morrow 13386-402' w/ 2 spf (32 holes). CAOF 565 mcf/d & 5 bc/d on 8/27/68.

8/70 Set CIBP @ 13000' w/ 1 sk cmt cap. Perf'd Wolfcamp 10290-95' w/ 2 spf (10 holes). Perf'd Wolfcamp 10295-10310', 10600-07', 10612-20', 10920-26', 11010-14', 11144-46', 11169-71', 11174-80' w/ 2 spf (100 holes). Acdzd 10290-310' w/ 1000 gal 15% HCl. Acdzd 10290-10310' w/ 1500 gal 3% HCl & 714 gal 28% HCl. Re-acdzd 10290-10310' w/ 1500 gal 3% HCl, 3000 gal 28% HCl, and 1500 gal 3% HCl. Dmpd 2 sx cmt @ 12992'. Set CIBP @ 10460' w/ 1 sk cmt cap. IPP Wolfcamp 26 bo, 114 mcf, 50 bw / 24 hrs on 9/13/70.

2/72 Set CIBP @ 10200'. Perf'd 9000-02' w/ 8 sqz holes. Sqzd w/ 250 sx. TOC @ 7600' by TS. Perf'd Abo 8786', 89', 97', 8804', 10', 16', 19', 23', 29', 32', 38', 39', 41', 57', 65', 78', 80', 92', 99', 8901', 03' w/ 1 spf (21 holes). Acdzd 8786-8903' overall w/ 1000 gal 15% NE HCl. Acdzd 8786-8903' overall w/ 10000 gal 20% HCl. Swbd 0.5 bo then no show. Spotted 100 sx cmt @ 8915'. Shot collars @ 7567', 7369', 7202', 7000', 6725', 6400' & failed to pull 5 1/2" csg. Shot collar @ 6130' & pulled 150 jts csg. Spotted 60 sx cmt from 6180-6030'. Spotted 100 sx cmt from 5500-5222'. Perf'd San Andres 4894-4904' w/ 2 spf (20 holes). Acdzd w/ 1000 gal 28% NE HCl. Perf'd San Andres 4678-98' w/ 1 spf (20 holes). Acdzd w/ 3000 gal 28% NE HCl. IPP 0 bo, 67 bw / 24 hrs on 4/9/72. SI 4/10/72.

2/91 Acdzd 4894-4904' w/ 1000 gal 28% FE HCl. Acdzd 4678-98' w/ 2000 gal 28% FE HCl. Swbd 4894-4904' 10 bo, 116 bw / 12 hrs. Swbd 4678-98' 0 bo, 190 bw / 10 hrs. Sqzd 4678-98' w/ 100 sx cmt. Perf'd Grayburg 4355-60', 4392-94', 4398-4402', 4466-70', 4484-86', 4498-4500', 4502-07', 4530-38' and 4552-57' w/ 2 spf (74 holes). Acdzd 4355-4557' overall w/ 4200 gal 15% NEFE HCl. Frac'd 4355-4557' overall w/ 36,000 gal gelled wtr and 16,165 lbs 16-30 mesh Ottawa sand. IPP 18 bo, 60 mcf, 126 bw / 24 hrs on 5/24/91.

7/03 Drld out cmt 5221-5547' and 5900-5986'. Set pkr at 5343' and swab tested open hole interval 5378-5986' (McKnight porosity zone 5827-5866'). Swbd 4 days and rec 723 bw with no oil.

Equipment Data as of 7/03: 20 jts - 2 7/8", 6.5#, J-55 Tubing.

File name: o:\everyone\wellfile\maljamar\lea\Lea #23.xls

