

## DISTRICT I

P.O. Box 1980, Hobbs, NM 88241-1980

## DISTRICT II

P.O. Box Drawer DD, Artesia, NM 88211-0719

## DISTRICT III

1000 Rio Brazos Rd., Aztec, NM 87410

## DISTRICT IV

P.O. Box 2088, Santa Fe, NM 87504-2088

**State of New Mexico**  
**Energy, Minerals and Natural Resources Department**

**OIL CONSERVATION DIVISION**

P.O. Box 2088  
 Santa Fe, New Mexico 87504-2088

Form C-102

Revised February 10, 1999

Instructions on back

Submit to Appropriate District Office

State Lease - 4 Copies

Fee Lease - 3 Copies

☒ AMENDED REPORT

**WELL LOCATION AND ACREAGE DEDICATION PLAT**

<sup>1</sup> API Number 3002527829	<sup>2</sup> Pool Code 47090	<sup>3</sup> Pool Name MONUMENT TUBB
<sup>4</sup> Property Code 29919	<sup>5</sup> Property Name WEIR, C. H. -A-	<sup>6</sup> Well No. 14
<sup>7</sup> OGRID Number 4323	<sup>8</sup> Operator Name CHEVRON USA INC	<sup>9</sup> Elevation 3575' KB

<sup>10</sup> Surface Location

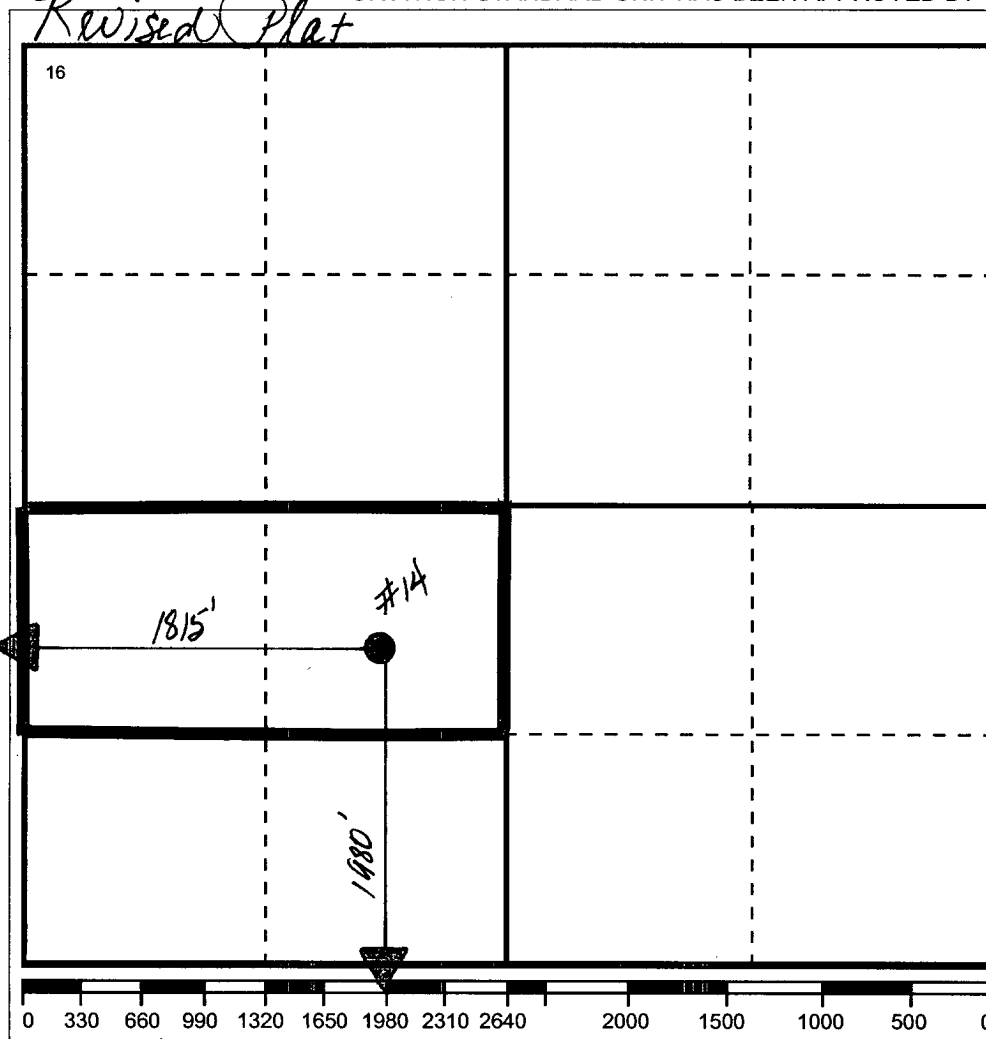
Ul or lot no K	Section 12	Township 20S	Range 37E	Lot.Idn	Feet From The 1980	North/South Line SOUTH	Feet From The 1815	East/West Line WEST	County LEA
-------------------	---------------	-----------------	--------------	---------	-----------------------	---------------------------	-----------------------	------------------------	---------------

<sup>11</sup> Bottom Hole Location If Different From Surface

Ul or lot no.	Section	Township	Range	Lot.Idn	Feet From The	North/South Line	Feet From The	East/West Line	County
---------------	---------	----------	-------	---------	---------------	------------------	---------------	----------------	--------

<sup>12</sup> Dedicated Acre 80	<sup>13</sup> Joint or Infill No	<sup>14</sup> Consolidation Code	<sup>15</sup> Order No.
------------------------------------	-------------------------------------	----------------------------------	-------------------------

NO ALLOWABLE WILL BE ASSIGNED TO THIS COMPLETION UNTIL ALL INTERESTS HAVE BEEN CONSOLIDATED  
 OR A NON-STANDARD UNIT HAS BEEN APPROVED BY THE DIVISION



<sup>17</sup> OPERATOR CERTIFICATION

I hereby certify that the information contained herein is true and complete to the best of my knowledge and belief

Signature

Printed Name

Denise Leake

Positio

Regulatory Specialist

Date

9/23/2003

<sup>18</sup> SURVEYOR CERTIFICATION

I hereby certify that the well location shown on this plat was plotted from field notes of actual surveys made by me or under my supervision, and that the same is true and correct to the best of my knowledge and belief.

Date Surveyed

SEP 2003

Signature & Seal of  
Professional Surveyor

RECEIVED  
 Hobbs  
 OCD

Certificate No.