

DISTRICT I

P.O. Box 1980, Hobbs, NM 88241-1980

DISTRICT II

P.O. Box Drawer DD, Artesia, NM 88211-0719

DISTRICT III

1000 Rio Brazos Rd., Aztec, NM 87410

DISTRICT IV

P.O. Box 2088, Santa Fe, NM 87504-2088

State of New Mexico
Energy, Minerals and Natural Resources Department

OIL CONSERVATION DIVISION

P.O. Box 2088
Santa Fe, New Mexico 87504-2088

Form C-102

Revised February 10, 1999

Instructions on back

Submit to Appropriate District Office

State Lease - 4 Copy

Fee Lease - 3 Copy

☒ AMENDED REPORT

WELL LOCATION AND ACREAGE DEDICATION PLAT

¹ API Number 30-025-34823	² Pool Code 3040	³ Pool Name ARROWHEAD GRAYBURG
⁴ Property Code	⁵ Property Name ARROWHEAD GRAYBURG UNIT	⁶ Well No. 352
⁷ OGRID Number 4323	⁸ Operator Name CHEVRON USA INC	⁹ Elevation 3530' KB

¹⁰ Surface Location

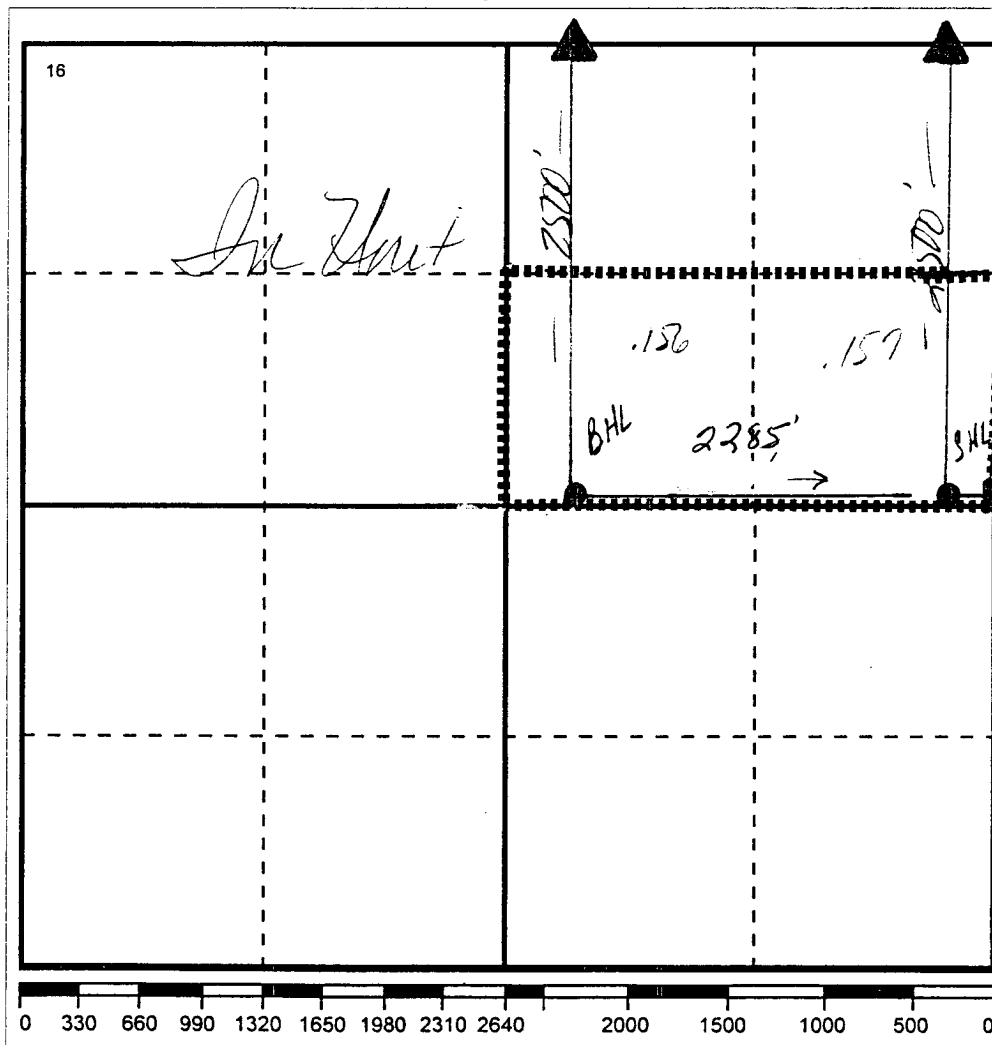
UI or lot no	Section	Township	Range	Lot.Idn	Feet From The	North/South Line	Feet From The	East/West Line	County
H	2	22-S	36-E		2500'	NORTH	100'	EAST	LEA

¹¹ Bottom Hole Location If Different From Surface

UI or lot no.	Section	Township	Range	Lot.Idn	Feet From The	North/South Line	Feet From The	East/West Line	County
G	2	22-S	36-E		2500'	NORTH	2385'	EAST	LEA

¹² Dedicated Acre 80	¹³ Joint or Infill No	¹⁴ Consolidation Code	¹⁵ Order No.
------------------------------------	-------------------------------------	----------------------------------	-------------------------

NO ALLOWABLE WILL BE ASSIGNED TO THIS COMPLETION UNTIL ALL INTERESTS HAVE BEEN CONSOLIDATED
OR A NON-STANDARD UNIT HAS BEEN APPROVED BY THE DIVISION



17 OPERATOR CERTIFICATION

I hereby certify that the information
contained herein is true and complete to the
best of my knowledge and belief

Signature

Printed Name

Denise Leake

Position

Regulatory Specialist

Date

12/17/2002

18 SURVEYOR CERTIFICATION

I hereby certify that the well location shown
on this plat was plotted from field notes of
actual surveys made by me or under my
supervision, and that the same is true and
correct to the best of my knowledge and
belief.

Date Surveyed

Signature & Seal of
Professional Surveyor

Certificate No.