

District I  
1625 N. French Dr., Hobbs, NM 88240  
District II  
811 South First, Artesia, NM 88210  
District III  
1000 Rio Brazos Road, Aztec, NM 87410  
District IV  
2040 South Pacheco, Santa Fe, NM 87505

State of New Mexico  
Energy Minerals and Natural Resources

Form C-101  
Revised March 17, 1999

Oil Conservation Division  
2040 South Pacheco  
Santa Fe, NM 87505

Submit to appropriate District Office  
State Lease - 6 Copies  
Fee Lease - 5 Copies

☐ AMENDED REPORT

**APPLICATION FOR PERMIT TO DRILL, RE-ENTER, DEEPEN, PLUGBACK, OR ADD A ZONE**

<sup>1</sup> Operator Name and Address CONCHO OIL & GAS CORP. 110 W. LOUISIAN STE 410 MIDLAND, TX 79701		<sup>2</sup> OGRID Number 193407
		<sup>3</sup> API Number 30-025-36113
<sup>3</sup> Property Code 31068	<sup>5</sup> Property Name HOLE IN THE WALL	<sup>6</sup> Well No. 1

<sup>7</sup> Surface Location

UL or lot no.	Section	Township	Range	Lot Idn	Feet from the	North/South line	Feet from the	East/West line	County
H	33	15S	33E		2310	NORTH	800	EAST	LEA

<sup>8</sup> Proposed Bottom Hole Location If Different From Surface

UL or lot no.	Section	Township	Range	Lot Idn	Feet from the	North/South line	Feet from the	East/West line	County
South Saunders Permo Penn						<sup>10</sup> Proposed Pool 2			

<sup>11</sup> Work Type Code N	<sup>12</sup> Well Type Code O	<sup>13</sup> Cable/Rotary R	<sup>14</sup> Lease Type Code S	<sup>15</sup> Ground Level Elevation 4172'
<sup>16</sup> Multiple S	<sup>17</sup> Proposed Depth 11000	<sup>18</sup> Formation WOLFCAMP	<sup>19</sup> Contractor	<sup>20</sup> Spud Date WHEN APPROVED

<sup>21</sup> Proposed Casing and Cement Program

Hole Size	Casing Size	Casing weight/foot	Setting Depth	Sacks of Cement	Estimated TOC
25	20		40	Redi-Mix	SURF
17-1/2	13-3/8	48	400	550	SURF
12-1/4	8-5/8	32	4300	800	2000
7-7/8	5-1/2	17	11000	500	Est. 8000'

<sup>22</sup> Describe the proposed program. If this application is to DEEPEN or PLUG BACK, give the data on the present productive zone and proposed new productive zone. Describe the blowout prevention program, if any. Use additional sheets if necessary.

Concho Oil & Gas Corp. respectfully requests approval to drill the Hole in the Wall No. 1 well according to the following procedure:

1. Drill 25" hole to 40'. Set 40' of 20" conductor pipe & cmt to surface w/ Redi-Mix.
2. Drill 17-1/2" hole to 400' w/ Fresh water. Run & set 400' of 13-3/8", 48#, H-40, ST&C csg. Cmt w/ 550 sx 'C' cmt + additives, circ cmt to surface. NU 13 5/8" Hydrill & test to 1200# w/ rig pump.
3. Drill 12-1/4" hole to 4300' w/ brine water. Run & set 4300' of 8-5/8", 32#, J-55 ST&C csg. Cmt w/ 800 sx 'C' cmt + additives. Est. TOC @ 2000'. NU 11" 3000# Double ram BOP & Annular Hydrill. Test to 3000# w/ independent tester
4. Drill 7-7/8" hole to 11000' w/ cut brine. Run & set 11000' of 5-1/2" 17# N-80 LT&C csg. Cmt w/ 500 sx of Class "H" + additives. Est. TOC @ 8000'.

<sup>23</sup> I hereby certify that the information given above is true and complete to the best of my knowledge and belief.

Signature: *Erick W. Nelson*

Printed name: Erick W. Nelson

Title: Engineer

Date: 1-18-03

Phone: (915) 683-7443

OIL CONSERVATION DIVISION  
ORIGINAL SIGNED BY  
PAUL F. KAUTZ  
PETROLEUM ENGINEER

Approved by:

Title:

Approval Date:

Conditions of Approval:

Attached ☐

Expiration Date:

JAN 23 2003

DISTRICT I  
1625 N. French Dr., Hobbs, NM 88240  
DISTRICT II  
811 South First, Artesia, NM 88210  
DISTRICT III  
1000 Rio Brazos Rd., Aztec, NM 87410  
DISTRICT IV  
2040 South Pacheco, Santa Fe, NM 87505

State of New Mexico  
Energy, Minerals and Natural Resources Department

Form C-102  
Revised March 17, 1999

Submit to Appropriate District Office  
State Lease - 4 Copies  
Fee Lease - 3 Copies

OIL CONSERVATION DIVISION

2040 South Pacheco  
Santa Fe, New Mexico 87505

☐ AMENDED REPORT

WELL LOCATION AND ACREAGE DEDICATION PLAT

API Number 30-029-36113	Pool Code 55100	Pool Name South Saunders Permo Perm
Property Code 31068	Property Name HOLE IN THE WALL	Well Number 1
OGRID No. 193407	Operator Name CONCHO OIL & GAS CORP.	Elevation 4172'

Surface Location

UL or lot No. H	Section 33	Township 15 S	Range 33 E	Lot Idn	Feet from the 2310	North/South line NORTH	Feet from the 800	East/West line EAST	County LEA
--------------------	---------------	------------------	---------------	---------	-----------------------	---------------------------	----------------------	------------------------	---------------

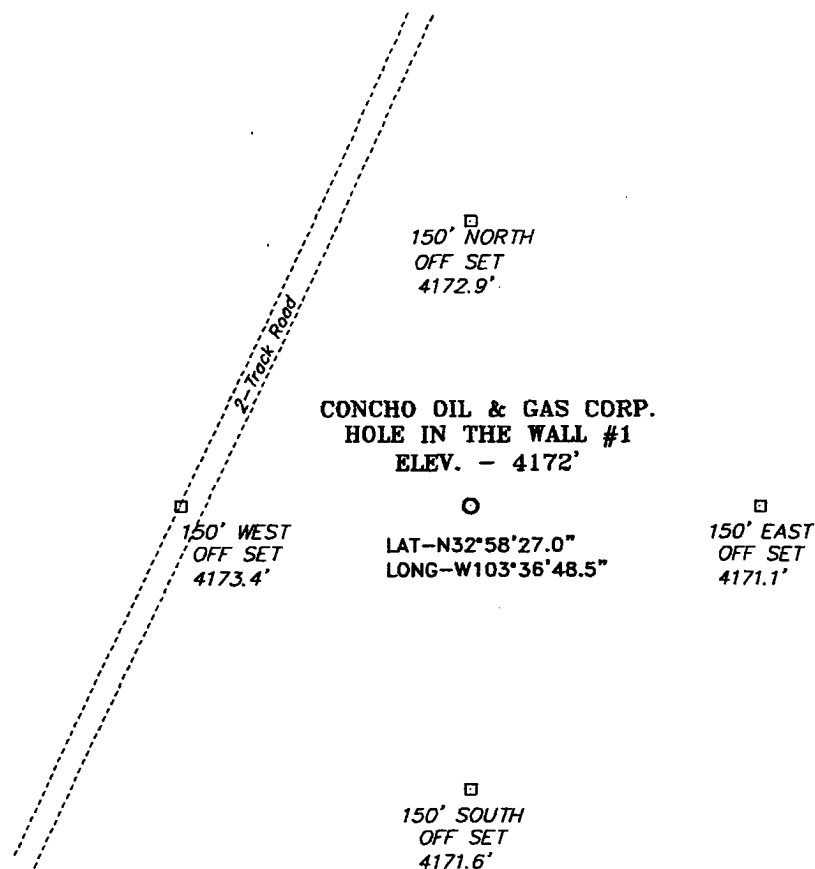
Bottom Hole Location If Different From Surface

UL or lot No.	Section	Township	Range	Lot Idn	Feet from the	North/South line	Feet from the	East/West line	County
Dedicated Acres 40	Joint or Infill	Consolidation Code	Order No.						

NO ALLOWABLE WILL BE ASSIGNED TO THIS COMPLETION UNTIL ALL INTERESTS HAVE BEEN CONSOLIDATED  
OR A NON-STANDARD UNIT HAS BEEN APPROVED BY THE DIVISION

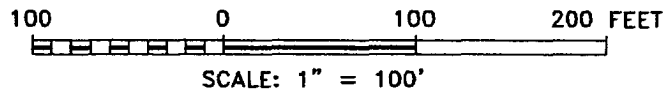
	<b>OPERATOR CERTIFICATION</b>  I hereby certify the the information contained herein is true and complete to the best of my knowledge and belief.  Signature: <u>[Signature]</u> Printed Name: <u>Eric W. Nelson</u> Title: <u>Engineer</u> Date: <u>1-18-03</u>	
	<b>SURVEYOR CERTIFICATION</b>  I hereby certify that the well location shown on this plat was plotted from field notes of actual surveys made by me or under my supervision and that the same is true and correct to the best of my belief.  JANUARY 08 2003 Date Surveyed: <u>GARY L. JONES</u> Signature & Seal of Professional Surveyor: <u>[Signature]</u> W.O. No. 2948 Certificate No. <u>Gary L. Jones</u> 7977	
	BASIN SURVEYS	

SECTION 33, TOWNSHIP 15 SOUTH, RANGE 33 EAST, N.M.P.M.,  
LEA COUNTY, NEW MEXICO.



DIRECTIONS TO LOCATION:

FROM THE JUNCTION OF STAT HWY. 457 AND US HWY 82,  
GO SOUTHWEST ON HWY 82 FOR 4.3 MILES TO A LEASE  
ROAD RIGHT; THENCE NORTH ON LEASE ROAD FOR 4.0  
MILES TO LOCATION 1800 FEET LEFT.



**CONCHO OIL & GAS CORP.**

REF: HOLE IN THE WALL No. 1 / Well Pad Topo

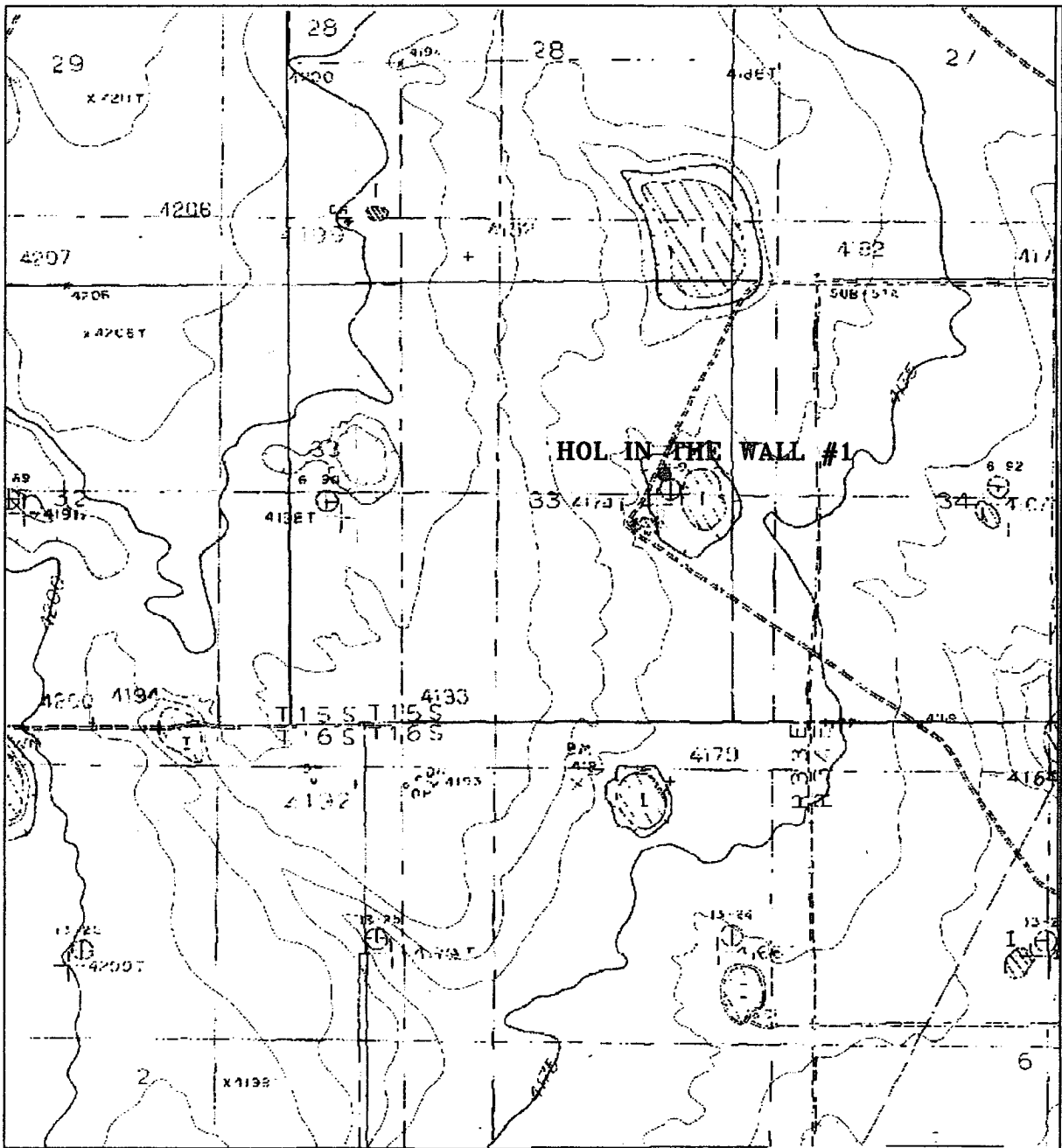
THE HOLE IN THE WALL No. 1 LOCATED 2310' FROM  
THE NORTH LINE AND 800' FROM THE EAST LINE OF  
SECTION 33, TOWNSHIP 15 SOUTH, RANGE 33 EAST,  
N.M.P.M., LEA COUNTY, NEW MEXICO.

**Basin Surveys** P.O. BOX 1786-HOBBS, NEW MEXICO

W.O. Number: 2948 Drawn By: **K. GOAD**

Date: 01-09-2003 Disk: KJG CD#4 - 2948A.DWG

Survey Date: 01-08-2003 Sheet 1 of 1 Sheets



### HOLE IN THE WALL #1

Located at 2310' FNL and 800' FEL  
 Section 33, Township 15 South, Range 33 East,  
 N.M.P.M., Lea County, New Mexico.

**basin**  
**surveys**

focused on excellence  
 in the oilfield

P.O. Box 1786  
 1120 N. West County Rd.  
 Hobbs, New Mexico 88241  
 (505) 393-7316 - Office  
 (505) 392-3074 - Fax  
 basinsurveys.com

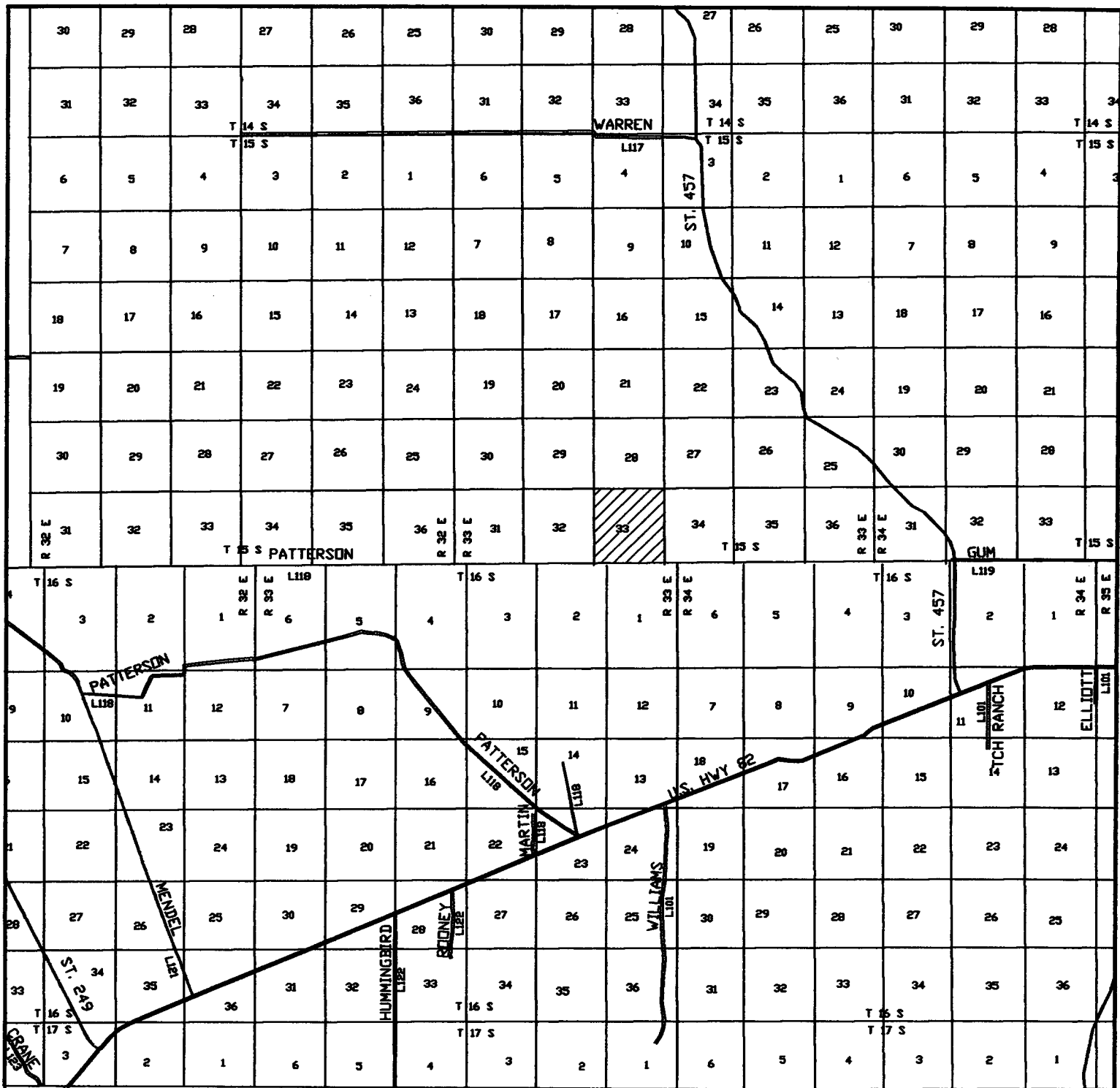
W.O. Number: 2948AA - KJG CD#5

Survey Date: 01-08-2003

Scale: 1" = 2000'

Date: 01-09-2003

**CONCHO**  
**OIL & GAS**  
**CORP.**



# **HOLE IN THE WALL #1**

Located at 2310' FNL and 800' FEL  
 Section 33, Township 15 South, Range 33 East,  
 N.M.P.M., Lea County, New Mexico.



focused on excellence  
 in the oilfield

P.O. Box 1786  
 1120 N. West County Rd.  
 Hobbs, New Mexico 88241  
 (505) 393-7316 - Office  
 (505) 392-3074 - Fax  
 basinsurveys.com

W.O. Number: 2948AA - KJG CD#5

Survey Date: 01-08-2003

Scale: 1" = 2 miles

Date: 01-09-2003

**CONCHO  
 OIL & GAS  
 CORP.**