

District I
1625 N French Dr., Hobbs, NM 88240
District II
1301 W Grand Avenue, Artesia, NM 88210
District III
1000 Rio Brazos Road, Aztec, NM 87410
District IV
1220 S. St Francis Dr, Santa Fe, NM 87505

State of New Mexico
Energy Minerals and Natural Resources

Form C-101
May 27, 2004

Oil Conservation Division
1220 South St. Francis Dr.
Santa Fe, NM 87505

Submit to appropriate District Office

☐ AMENDED REPORT

APPLICATION FOR PERMIT TO DRILL, RE-ENTER, DEEPEN, PLUGBACK, OR ADD A ZONE

¹ Operator Name and Address Hanson Operating Company, Inc. P. O. Box 1515 Roswell, NM 88202-1515		² OGRID Number 9974
³ Property Code 4979		⁴ Property Name Max Gutman
⁵ Proposed Pool 1 Paddock		⁶ Well No #5
⁷ Surface Location Paddock		⁸ Proposed Pool 2 McKnight, Glorieta

Surface Location

UL or lot no N	Section 19	Township 22S	Range 38E	Lot Idn	Feet from the 640'	North/South line South	Feet from the 1650'	East/West line West	County Lea
-------------------	---------------	-----------------	--------------	---------	-----------------------	---------------------------	------------------------	------------------------	---------------

Proposed Bottom Hole Location If Different From Surface

UL or lot no	Section	Township	Range	Lot Idn	Feet from the	North/South line	Feet from the	East/West line	County
--------------	---------	----------	-------	---------	---------------	------------------	---------------	----------------	--------

Additional Well Information

¹¹ Work Type Code A	¹² Well Type Code O	¹³ Cable/Rotary R	¹⁴ Lease Type Code P	¹⁵ Ground Level Elevation 3346' GL
¹⁶ Multiple N	¹⁷ Proposed Depth 7419'	¹⁸ Formation Granite Wash	¹⁹ Contractor	²⁰ Spud Date 7/16/2007
Depth to Groundwater ~ 140'		Distance from nearest fresh water well		Distance from nearest surface water
Pit Liner Synthetic <input checked="" type="checkbox"/> 12 mils thick Clay <input type="checkbox"/> Pit Volume 25 bbls		Drilling Method: Fresh Water <input type="checkbox"/> Brine <input type="checkbox"/> Diesel/Oil-based <input type="checkbox"/> Gas/Air <input type="checkbox"/>		
Closed-Loop System <input type="checkbox"/>				

Proposed Casing and Cement Program

Hole Size	Casing Size	Casing weight/foot	Setting Depth	Sacks of Cement	Estimated TOC
12 1/4"	8 5/8"	24#	1180'	450	Surface
7 7/8"	5 1/2"	17#	7447'	625	

²² Describe the proposed program. If this application is to DEEPEN or PLUG BACK, give the data on the present productive zone and proposed new productive zone. Describe the blowout prevention program, if any. Use additional sheets if necessary.

Propose to complete and test the Paddock, McKnight and Glorieta formations as follows:

1. RU pulling unit. Pull rods and pump. Install BOP. Pull out of hole with tubing.
2. Set RBP at 5300'. Circulate hole clean.
3. Perforate Paddock formation at 5139' - 5208'.
4. Perforate Glorieta formation at 5124' - 5126'.
5. Perforate McKnight formation at 5092' - 5106'.
6. Acidize perfs with 10,000 gallons 20% acid.
7. Swab and evaluate.
8. Place on production.

Permit Expires 1 Year From Approval
Date Unless Drilling Underway

²³ I hereby certify that the information given above is true and complete to the best of my knowledge and belief. I further certify that the drilling pit will be constructed according to NMOCD guidelines ☒, a general permit ☐, or an (attached) alternative OCD-approved plan ☐.

Signature: Carol J. Smith

Printed name: Carol J. Smith

Title: Production Analyst

E-mail Address: hanson@dfn.com

Date: 7/2/2007

Phone: 505-622-7330

OIL CONSERVATION DIVISION

Approved by:

Chris Williams

DISTRICT SUPERVISOR/GENERAL MANAGER

Title

Approval Date: JUL 06 2007

Expiration Date

Oil Conservation Division

Conditions of approval: Approval for drilling ONLY
--- CANNOT produce Downhole Commingled until
DHC is approved in Santa Fe.



District I
1625 N. French Dr., Hobbs, NM 88240
District II
1301 W. Grand Avenue, Artesia, NM 88210
District III
1000 Rio Brazos Rd., Aztec, NM 87410
District IV
1220 S. St. Francis Dr., Santa Fe, NM 87505

State of New Mexico
Energy, Minerals & Natural Resources Department
OIL CONSERVATION DIVISION
1220 South St. Francis Dr.
Santa Fe, NM 87505

Form C-102
Revised October 12, 2005
Submit to Appropriate District Office
State Lease - 4 Copies
Fee Lease - 3 Copies

☐ AMENDED REPORT

WELL LOCATION AND ACREAGE DEDICATION PLAT

¹ API Number 30-025-22473		² Pool Code 49210		³ Pool Name Wildcat	
⁴ Property Code 4979		⁵ Property Name Max Gutman			⁶ Well Number #5
⁷ OGRID No. 009974		⁸ Operator Name Hanson Operating Company, Inc.			⁹ Elevation 3346' GR

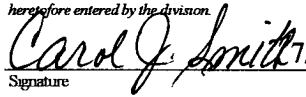
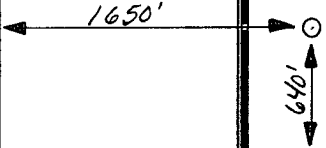
¹⁰ Surface Location

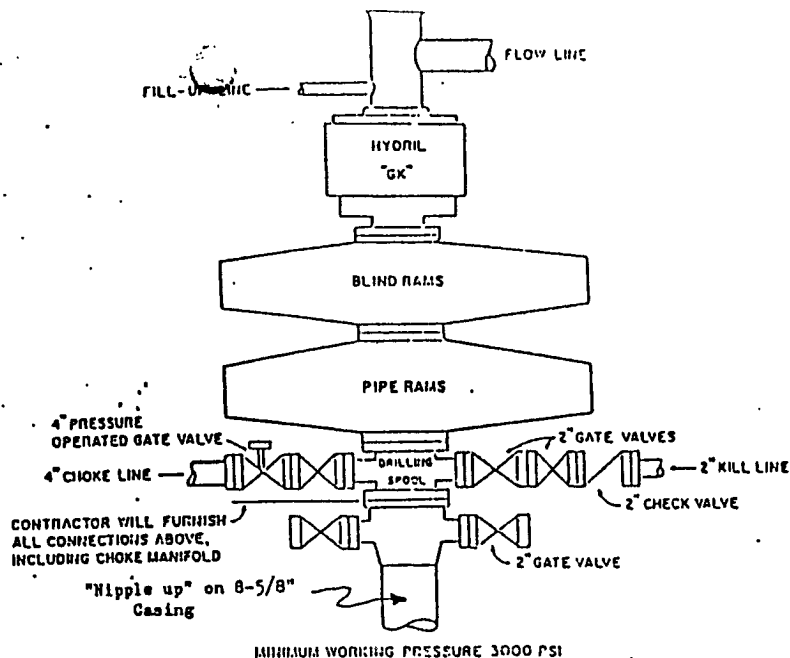
UL or lot no.	Section	Township	Range	Lot Idn	Feet from the	North/South line	Feet from the	East/West line	County
N	19	22 South	38 East		640	South	1650	West	Lea

¹¹ Bottom Hole Location If Different From Surface

UL or lot no.	Section	Township	Range	Lot Idn	Feet from the	North/South line	Feet from the	East/West line	County
¹² Dedicated Acres 40		¹³ Joint or Infill		¹⁴ Consolidation Code		¹⁵ Order No.			

No allowable will be assigned to this completion until all interests have been consolidated or a non-standard unit has been approved by the division.

¹⁶				¹⁷ OPERATOR CERTIFICATION <i>I hereby certify that the information contained herein is true and complete to the best of my knowledge and belief, and that this organization either owns a working interest or unleased mineral interest in the land including the proposed bottom hole location or has a right to drill this well at this location pursuant to a contract with an owner of such a mineral or working interest, or to a voluntary pooling agreement or a compulsory pooling order heretofore entered by the division.</i>  Signature Date 7/12/2007 Carol J. Smith Printed Name	
				¹⁸ SURVEYOR CERTIFICATION <i>I hereby certify that the well location shown on this plat was plotted from field notes of actual surveys made by me or under my supervision, and that the same is true and correct to the best of my belief.</i> March 2, 1968 Date of Survey Signature and Seal of Professional Surveyor Refer to Original Plat 751 Certificate Number	
					



CONTRACTOR TO FURNISH

1. ALL EQUIPMENT ABOVE CASING HEAD HOUSING INCLUDING CHOKER MANIFOLD.
2. INDEPENDENT AUTOMATIC ACCUMULATOR 3000 PSI WP.
3. B.O.P. CONTROLS TO BE LOCATED NEAR DRILLER'S POSITION AND AT SAFE DISTANCE FROM THE WELL.
4. SPARE SET PIPE RAMS TO FIT PIPE IN USE.

COMPANY TO FURNISH

1. WELLHEAD EQUIPMENT.
2. WEAR BUSHING, IF REQUIRED.

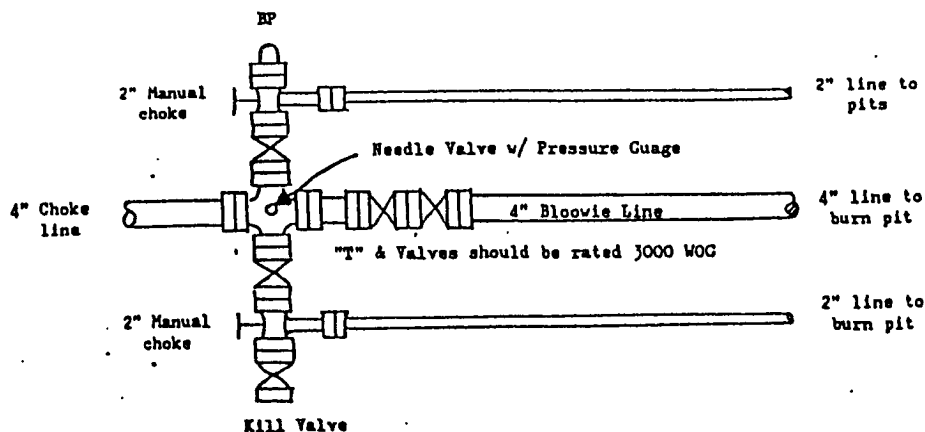
GENERAL NOTES

1. ALL VALVES, PIPING, FLANGES ETC. MUST HAVE MINIMUM WORKING PRESSURE EQUAL TO WORKING PRESSURE OF PREVENTERS. VALVES MUST BE OF THE FULL OPENING TYPE.
2. CONTROLS TO BE OF STANDARD DESIGN AND EACH MARKED SHOWING OPEN AND CLOSED POSITION.
3. CHOKER MANIFOLD AS SHOWN IN APP. 11 AND 12 REPLACEABLE PARTS AND WRENCHES TO BE CONVENIENTLY LOCATED FOR IMMEDIATE USE.
4. ALL VALVES TO BE EQUIPPED WITH HANDWHEELS.
5. CHOKER LINES MUST BE SUITABLY ANCHORED.
6. DEVIATIONS FROM THIS DRAWING MAY BE MADE ONLY WITH THE PERMISSION OF THE COMPANY.

MINIMUM BLOWOUT PREVENTER REQUIREMENTS

NORMAL PRESSURE SERVICE

CHOKER MANIFOLD SETUP



The above Manifold Hookup Design will meet minimum requirement by the Operator. Drilling Contractor to supply choke line and choke manifold. Operator to supply downstream lines from manifold assembly to pits.

WELLBORE DIAGRAM

WELL NAME	Max Gutman #5	FIELD	Blinebry, Drinkard, Granite Wash
LOCATION	640' FSL & 1650' FWL, N-Section 19-22S-38E, Lea County, NM		
GL	3346'	ZERO	KB 3358'
SPUD DATE	3/16/1968	COMPLETION DATE	4/22/1968
COMMENTS:			

CASING PROGRAM

8 5/8" 24# J55	1180'
5 1/2" 17# J55	7447'

12 1/2" Hole

8 5/8" at 1180' with 450 sacks cement, Circulated

BEFORE

7 7/8" Hole

Blinebry 5489'-5527' 15 holes
5574'-5671' 16 holes

Drinkard 6392'-6963' 38 holes

Granite Wash 7356'-7391' 5 holes

PBTD 7419'

5 1/2" at 7447' with 625 sacks cement

TD 7447'

Not to Scale
7/2/2007

WELLBORE DIAGRAM

WELL NAME	Max Gutman #5	FIELD	Blinebry, Drinkard, Granite Wash
LOCATION	640' FSL & 1650' FWL, N-Section 19-22S-38E, Lea County, NM		
GL	3346'	ZERO	KB 3358'
SPUD DATE	3/16/1968	COMPLETION DATE	4/22/1968
COMMENTS:			

CASING PROGRAM

8 5/8" 24# J55	1180'
5 1/2" 17# J55	7447'

12 1/2" Hole

8 5/8" at 1180' with 450 sacks cement, Circulated

AFTER

7 7/8" Hole

McKnight 5092'-5106' 11 holes

Glorieta 5124'-5126' 4 holes

Paddock 5139'-5208' 29 holes

Blinebry 5489'-5527' 15 holes
5574'-5671' 16 holes

Drinkard 6392'-6963' 38 holes

Granite Wash 7356'-7391' 5 holes

PBTD 7419'

5 1/2" at 7447' with 625 sacks cement

TD 7447'

Not to Scale
7/2/2007