

Williams, Chris, EMNRD

From: Williams, Chris, EMNRD
Sent: Monday, July 09, 2007 7:02 AM
To: 'Randy Patterson'
Subject: RE: Good 13 State 1 Revised Proposed BOP (Forster Rig 15) - Lea Co., NM

OK go ahead.

From: Randy Patterson [mailto:RPatterson@chkenegy.com]
Sent: Friday, July 06, 2007 4:08 PM
To: Williams, Chris, EMNRD
Cc: Shay Stricklin
Subject: Good 13 State 1 Revised Proposed BOP (Forster Rig 15) - Lea Co., NM

Chris,
Similar to the request below for the Lawrence 29-1 (with Latshaw Rig 6), we need to make a similar appeal for our Good 13 State 1 well since the Forster Rig 15 has 11" BOP stack and we will need to rent a 13-5/8" stack only for the intermediate hole section (drill out of 11" hole below the 13-3/8" casing). This single shut in stack should be sufficient should we need to shut in the well due to a shallow gas or air flow. We can then install the full rig BOP after we run and cement the 8-5/8" intermediate casing at 4100'. Please let me know if the NMOCD approves of this verbal request since this well will spud this weekend and do the first nipple up and test prior to Monday.

Thanks,
Randy

Randy L. Patterson
Senior Drilling Engineer
Chesapeake Operating, Inc.
Direct: 405-767-4056
Pager: 405-502-4179 or 800-647-7243 (PIN 2865)
Cell: 405-388-9002
Home: 405-285-5164
Fax: 405-767-4225
E-mail: rpatterson@chkenegy.com

<<Good 13 State 1 Proposed BOP Stack - 13.625 3000 psi annular - 7-6-07.pdf>> <<Good 13 State 1 Proposed Well Schematic - revised 7-6-07.pdf>> <<Good 13 State 1 GeoProg draft - BRIEF.pdf>>

From: Randy Patterson
Sent: Thursday, May 24, 2007 3:10 PM
To: Shay Stricklin
Cc: Brenda Coffman
Subject: Lawrence 29-1 Revised Well Schematic & Revised Proposed BOP

As mentioned yesterday, we decided during the pre-spud meeting to set the intermediate casing at 4350' as shown on the GeoProg (rather than at 4650' as permitted). We also would like to receive permission to use a

7/9/2007

revised BOP (annular BOP only) on the first nipple up (NU) rather than the full rig stack BOP as originally proposed. I'm attaching the sundry recently approved for a federal rule which has wording that I provided to argue the need for less BOP on this first NU. Let me know if questions. The Lawrence 29-1 is expected to spud some time on Friday, so we may need a verbal approval since this first NU should happen before Monday (which is a holiday anyway). Thanks

This email (and attachments if any) is intended only for the use of the individual or entity to which it is addressed, and may contain information that is privileged, confidential and exempt from disclosure under applicable law. If the reader of this email is not the intended recipient, or the employee or agent responsible for delivering this message to the intended recipient, you are hereby notified that any dissemination, distribution or copying of this communication is strictly prohibited. If you have received this communication in error, please notify the sender immediately by return email and destroy all copies of the email (and attachments if any).

This inbound email has been scanned by the MessageLabs Email Security System.

7/9/2007

Chesapeake Operating, Inc. - Permian North District
Northern Lea Project - Tatum Basin-Baum Prospect
David Godsey – Geologist
GEOLOGICAL PROGNOSIS

WELL NAME: Good 13 State #1
SURFACE LOCATION: Section 13A-13S-32E, Lea Co., New Mexico
 660' FNL & 660' FEL
VERTICAL HOLE
ORTHODOX LOCATION
FIELD: Baum (Pennsylvanian)
ESTIMATED ELEVATIONS: **GL** 4296' **KB** 4314' (based on est. 18' KB)
ANTICIPATED CASING: 13 3/8" @ 400', 8 5/8" @ 4100'; 5 1/2" @ 10,000'
ANTICIPATED FORMATIONS:

FORMATION	SUBSEA	DEPTH	HYDROCARBON TYPE
Rustler	2640	1670'	
Yates	1770	2540'	
Grayburg	645	3665'	
San Andres	355	3955'	
Glorieta	-1080	5390'	
Tubb	-2495	6805'	
Abo Shale	-3275	7585'	
*Wolfcamp Lime	-4680	8990'	OIL
*Baum Pay 1 (Penn)	-5255	9565'	OIL
*Baum Pay 2 (Penn)	-5295	9605'	OIL
*Baum Pay 3 (Penn)	-5340	9650'	OIL
*Baum Pay 4 (Penn)	-5400	9710'	OIL
TD		10,000'	

*Potentially Productive Zones

Mud Up: before 9100 **Offset Logs:** Pan Am State DL #1- 13i-13S-32E

Nearest recent CHK well: TP 11 State #2 11M-T11S-R33E

OPEN HOLE LOGS:

Company: To be determined **Phone:**
Log Types & Depths: Quad Combo from TD to 4100'
 GR/Neu to surface;

MUDLOGGER: Suttles Logging **Phone:** 432/687-3148
2 man Unit **Depth:** 7500' to TD

COMPANY CONTACTS:

David Godsey, geologist
 Office: 405/879-7995
 Office Fax: 405/879-9577
 Home: 405/340-0119
 Mobile: 405/388-7491
Dgodsey@chkenergy.com

Mike Brown, geologist
 (secondary)
 Office: 405/879-9223
 Office Fax: 405/879-9577
 Home: 405/216-0817
Mbrown2@chkenergy.com

Randy Patterson, engineer
 Office: 405/767-4056
 Office Fax: 405/767-4225
 Mobile: 405/388-9002
 Pager: 405/502-4179
 Home: 405/285-5164
rpatterson@chkenergy.com

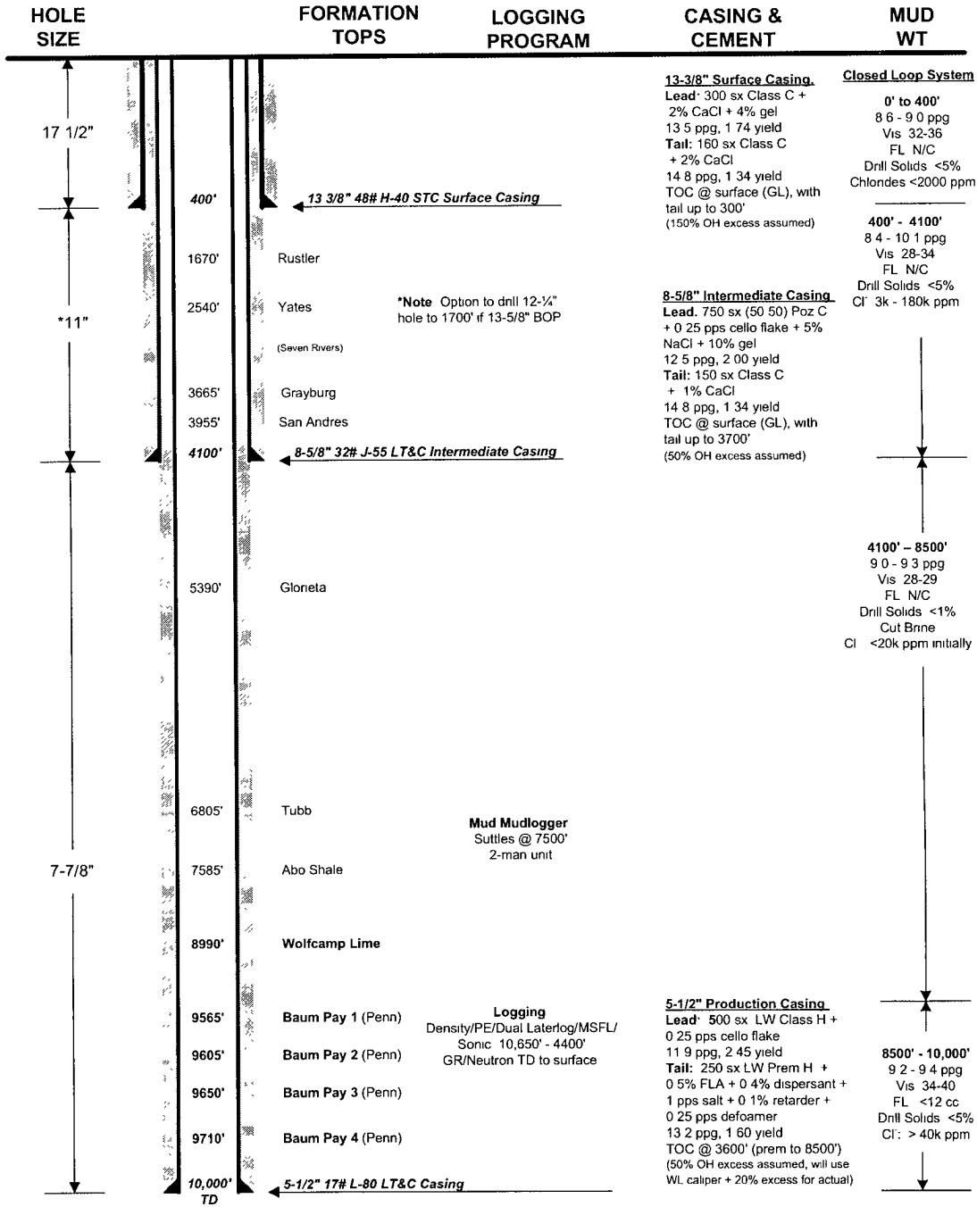
Jim Ball, land
 Office: 405.879.9189
jball2@chkenergy.com

CHESAPEAKE OPERATING INC

Proposed Well Schematic



WELL : Good 13 State 1
SHL : Section 13A-13S-32E (660' FNL & 660' FEL)
BHL : Straight hole (same as surface hole location); Target Radius of 330'
COUNTY : Lea **STATE** : New Mexico
FIELD : High Plains Field (Northern Lea Project – Tatum Basin-Baum Prospect)
ELEVATION : GL - 4296' (John West survey, 2/20/07) **KB - 4314'** (based on est. 18' RKB)



PREPARED BY: RLP
 REVISED BY: RLP

DATE: 3/2/07
 DATE: 7/6/07

BLOWOUT PREVENTOR SCHEMATIC

CHESAPEAKE OPERATING INC

WELL : Good 13 State 1 30-025-38334

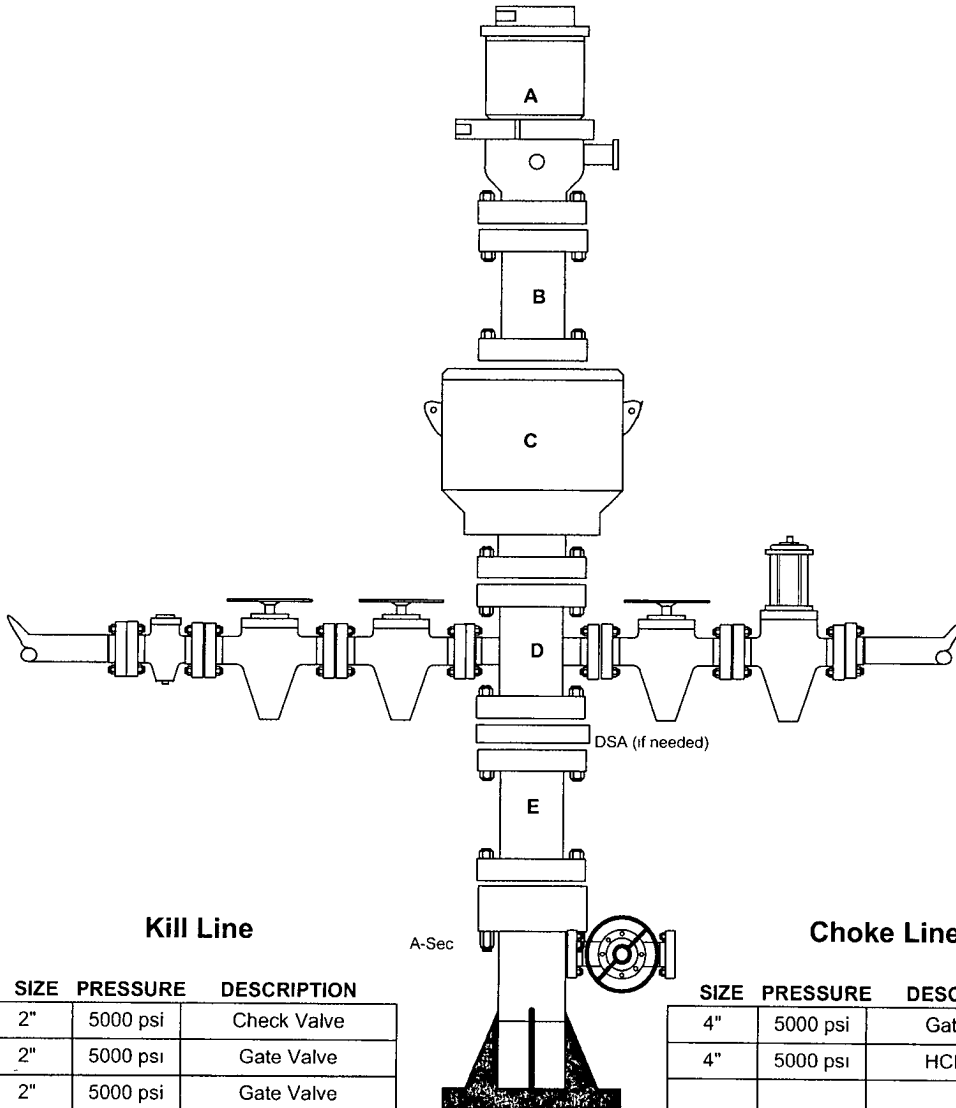
RIG : Forster 15

COUNTY : Lea

STATE: New Mexico

OPERATION: Drill out below 13-3/8" Casing (11" hole size)

	SIZE	PRESSURE	DESCRIPTION
A	13-5/8"	500 psi	Rot Head
B	13-5/8"	3000 psi	Spacer Spool
C	13-5/8"	3000 psi	Annular
D	13-5/8"	3000 psi	Mud Cross
E	13-5/8"	3000 psi	Spacer Spool
DSA	13-5/8" 3M x 13-5/8" 3M (if needed)		
A-Sec	13-3/8" SOW x 13-5/8" 3M		



Kill Line

SIZE	PRESSURE	DESCRIPTION
2"	5000 psi	Check Valve
2"	5000 psi	Gate Valve
2"	5000 psi	Gate Valve

Choke Line

SIZE	PRESSURE	DESCRIPTION
4"	5000 psi	Gate Valve
4"	5000 psi	HCR Valve

BLOWOUT PREVENTOR SCHEMATIC
CHESAPEAKE OPERATING INC

WELL : Good 13 State 1

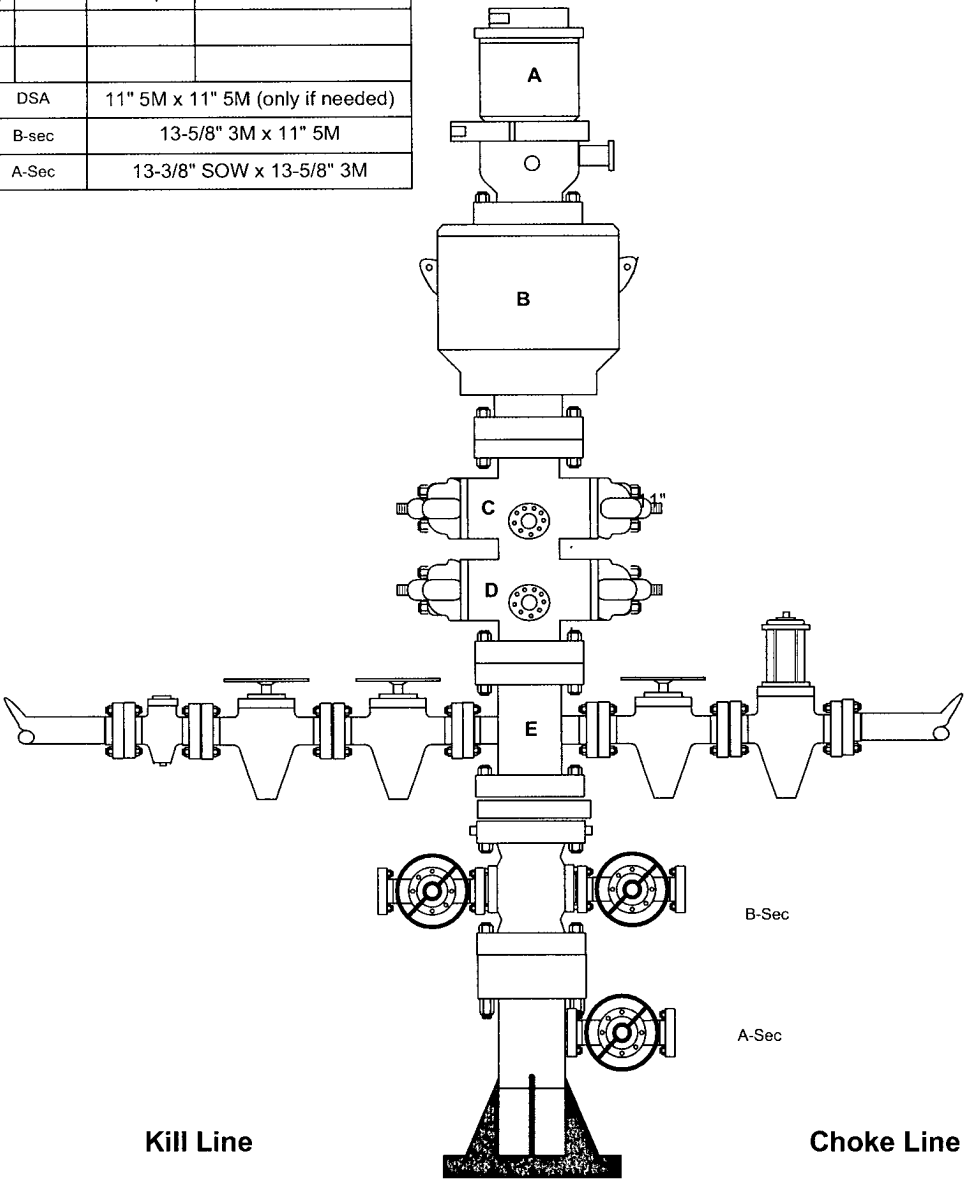
RIG : Forster 15

COUNTY : Lea

STATE: New Mexico

OPERATION: Drill out below 8-5/8" Casing (7-7/8" hole size)

	SIZE	PRESSURE	DESCRIPTION
A	11"	500 psi	Rot Head
B	11"	5000 psi	Annular
C	11"	5000 psi	Pipe Rams
D	11"	5000 psi	Blind Rams
E	11"	5000 psi	Mud Cross
	DSA	11" 5M x 11" 5M (only if needed)	
	B-sec	13-5/8" 3M x 11" 5M	
	A-Sec	13-3/8" SOW x 13-5/8" 3M	



SIZE	PRESSURE	DESCRIPTION
2"	5000 psi	Check Valve
2"	5000 psi	Gate Valve
2"	5000 psi	Gate Valve

SIZE	PRESSURE	DESCRIPTION
4"	5000 psi	Gate Valve
4"	5000 psi	HCR Valve