

District I
1625 N. French Dr., Hobbs, NM 88240
District II
811 S. 1st Street, Artesia, NM 88210
District III
1000 Rio Brazos Rd., Aztec, NM 87410
District IV
2040 South Pacheco, Santa Fe, NM 87505

State of New Mexico
Energy, Minerals & Natural Resources

Form C-101
Revised March 17, 1999

Oil Conservation Division
2040 South Pacheco
Santa Fe, NM 87505

Submit to appropriate District Office
State Lease - 6 Copies
Fee Lease - 5 Copies

☐ AMENDED REPORT

APPLICATION FOR PERMIT TO DRILL, RE-ENTER, DEEPEN, PLUGBACK, OR ADD A ZONE

¹ Operator Name and Address OXY USA WTP Limited Partnership P.O. Box 50250 Midland, TX 79710-0250		² OGRID Number 192463
⁴ Property Code 31895	⁵ Property Name Brabant	³ API Number 30- 025- 36130 ⁶ Well No. 1

⁷ Surface Location

UL or lot no.	Section	Township	Range	Lot. Idn	Feet from the	North/South Line	Feet from the	East/West line	County
G	8	22S	38E		1980	north	1980	east	Lea

⁸ Proposed Bottom Hole Location If Different From Surface

UL or lot no.	Section	Township	Range	Lot. Idn	Feet from the	North/South Line	Feet from the	East/West line	County

⁹ Proposed Pool 1

Wildcat Ellenburger

¹⁰ Proposed Pool 2

¹¹ Work Type Code N	¹² Well Type Code O	¹³ Cable/Rotary R	¹⁴ Lease Type Code P	¹⁵ Ground Level Elevation 3389'
¹⁶ Multiple No	¹⁷ Proposed Depth 10500'	¹⁸ Formation Ellenburger	¹⁹ Contractor N/A	²⁰ Spud Date 3/1/03

²¹ Proposed Casing and Cement Program

Hole Size	Casing Size	Casing weight/foot	Setting Depth	Sacks of Cement	Estimated TOC
12-1/4"	8-5/8"	24#	1500'	900sx	Surface
7-7/8"	5-1/2"	15.5-17#	10500'	1340sx	Surface

²² Describe the proposed program. If this application is to DEEPEN or PLUG BACK, give the data on the present productive zone and proposed new productive zone. Describe the blowout prevention program, if any. Use additional sheets if necessary.

See Other Side

Permit Expires 1 Year From Approval
Date Unless Drilling Underway

²³ I hereby certify that the information given above is true and complete to the best of my knowledge and belief. Signature: <i>David Stewart</i>		OIL CONSERVATION DIVISION	
Printed name: David Stewart		Approved by: ORIGINAL SIGNED BY PAUL F. KAUTZ	
Title: Sr. Regulatory Analyst		Title: PETROLEUM ENGINEER	
Date: 1/23/03		Approval Date: JAN 28 2003 Expiration Date:	
Phone: 915-685-5717		Conditions of Approval: Attached <input type="checkbox"/>	

BRABANT #1

1980 FNL 1980 FEL (G) SEC 8 T22S R38E Eddy County, NM

PROPOSED TD: 10500' TVD

BOP PROGRAM: 0' - 1500' None

1500' - 10500' 11" 5M blind pipe rams with 5M annular preventer and rotating head below 5600'.

CASING: Surface: 8-5/8" OD 24# K55 ST&C new casing from 0-1500'
12-1/4" hole

Production: 5-1/2" OD 15.5-17# K55/N80 LT&C new casing from 0-10500'
2500'-17# N80 1600'-17# K55 6400'-15.5# K55
7-7/8" hole DV Tool @ 6000'

CEMENT: Surface - circulate cement with 650sx Halliburton Lite PP w/ 2% CaCl_2 + .25#/sx Flocele followed by 250 sx PP with 2% CaCl_2 + .25#/sx Flocele.
Production - 1st stage - Cement with 710sx Super H w/ .5% Halad R-344 + .4% CFR-3 + .1% HR-7 + 1#/sx salt. 2nd stage - cement w/ 430sx IFC w/ 1% CaCl_2 + .25#/sx Flocele followed by 200sx PP 2% CaCl_2 .

Note: Cement volumes may need to be adjusted to hole caliper.

MUD: 0 - 1500' Gel/lime spud mud. Lime for pH control (9-10). Paper for seepage.
Wt 8.8-9.2 ppg, Vis 32-34 sec
1500' - 6500' Brine water. Caustic for pH control (9.5-10.5).
Paper for seepage.
Wt 9.8-10.0 ppg, Vis 32-34 sec
6500' - 10500' Mud up with an salt gel/starch.
Wt 9.8-10.0ppg, Vis 32-34sec, FL 10-15cc

District I
 PO Box 1980, Hobbs, NM 88241-1980

State of New Mexico
 Energy, Minerals & Natural Resources Department

Revised February 21, 1994

Instructions on back

OIL CONSERVATION DIVISION

Submit to Appropriate District Office

District II
 PO Drawer DD, Artesia, NM 88211-0719

State Lease - 4 Copies

District III
 000 Rio Brazos Rd., Aztec, NM 87410

Fee Lease - 3 Copies

District IV
 PO Box 2088, Santa Fe, NM 87504-2088

Santa Fe, NM 87504-2088

☐ AMENDED REPORT

WELL LOCATION AND ACREAGE DEDICATION PLAT

*API Number 30-025-36130	*Pool Code L	*Pool Name Wildcat Ellenburger
*Property Code 31895	*Property Name BRABANT	*Well Number 1
*OGRID No. 192463	*Operator Name OXY USA WTP LP	*Elevation 3389

¹⁰ Surface Location

UL or lot no.	Section	Township	Range	Lot Idn	Feet from the	North/South line	Feet from the	East/West line	County
G	8	22-S	38-E		1980	NORTH	1980	EAST	LEA

¹¹ Bottom Hole Location If Different From Surface

UL or lot no.	Section	Township	Range	Lot Idn	Feet from the	North/South line	Feet from the	East/West line	County

Dedicated Acres 40	*Joint or Infill No	*Consolidation Code	*Order No.
-----------------------	------------------------	---------------------	------------

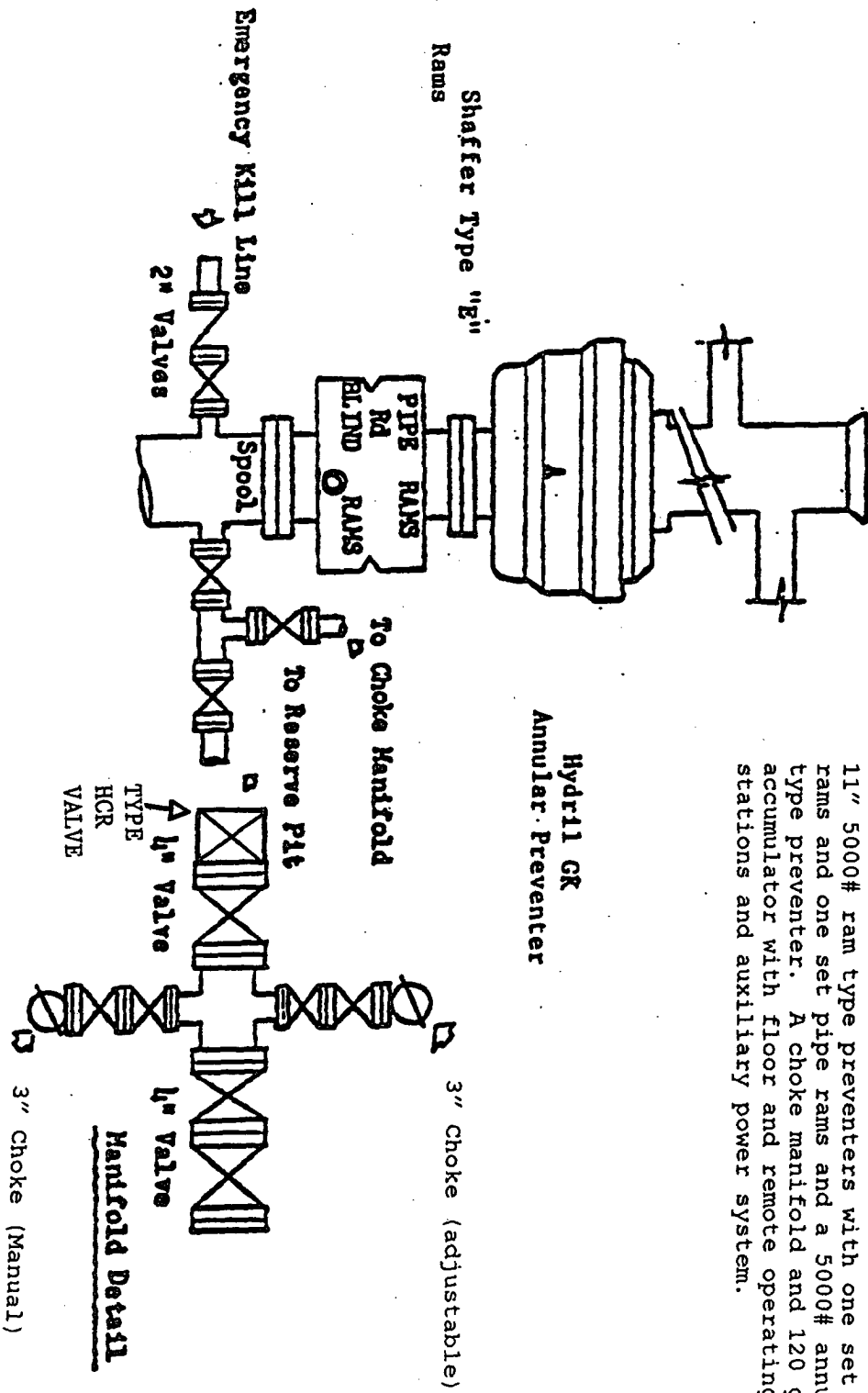
NO ALLOWABLE WILL BE ASSIGNED TO THIS COMPLETION UNTIL ALL INTERESTS HAVE BEEN CONSOLIDATED
 OR A NON-STANDARD UNIT HAS BEEN APPROVED BY THE DIVISION

<p>16</p>	<p>17 OPERATOR CERTIFICATION</p> <p>I hereby certify that the information contained herein is true and complete to the best of my knowledge and belief.</p> <p><i>David Stewart</i></p> <p>Signature David Stewart</p> <p>Printed Name Sr. Regulatory Analyst</p> <p>Title 1/23/03</p> <p>Date</p>	
	<p>18 SURVEYOR CERTIFICATION</p> <p>I hereby certify that the well location shown on this plat was plotted from field notes of actual surveys made by me or under my supervision, and that the same is true and correct to best of my belief.</p> <p>DECEMBER 4, 2002</p> <p>Date of Survey</p> <p>Signature and Seal of Professional Surveyor </p> <p>Certificate Number 14729</p>	

BLOWOUT PREVENTOR SCHEME

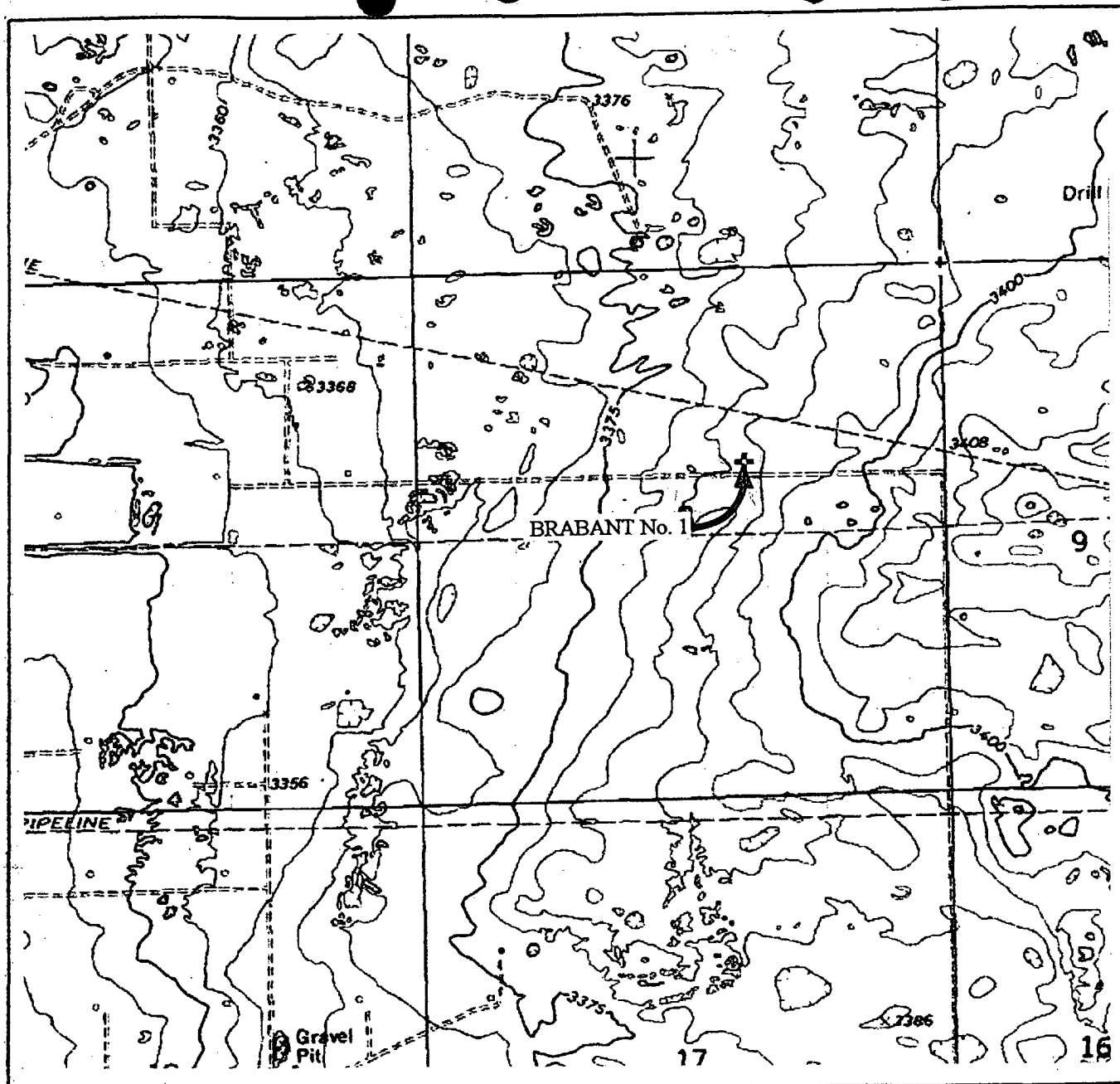
EXHIBIT A

11" 5000# ram type preventers with one set blind rams and one set pipe rams and a 5000# annular type preventer. A choke manifold and 120 gallon accumulator with floor and remote operating stations and auxiliary power system.



Hydril GR
Annular Preventer

LOCATION VERIFICATION MAP



SCALE: 1" = 2000'
WTC 46659

SEC. 8 TWP. 22-S RGE. 38-E

SURVEY N.M.P.M

COUNTY LEA STATE NM

DESCRIPTION 1980' FNL & 1980' FEL

ELEVATION 3389'

OPERATOR OXY USA WTP LP

LEASE BRABANT No. 1

CONTOUR INTERVAL 10'

WEST TEXAS CONSULTANTS, INC.

ENGINEERS-PLANNERS-SURVEYORS

MIDLAND, TEXAS

915-685-3800

A detailed black and white map of a region in Oklahoma, showing a grid of land parcels, roads, and geographical features. A prominent road runs vertically through the center, labeled "BRABANT No. 1" with an arrow pointing to it. Other labels include "ELIOTT", "TITMAN", "OIL FIELD", "MAYBERRY", "MAYBERRY OIL FIELD", and "MAYBERRY OIL FIELD". The map is oriented with North at the top.

WTC 46659

SURVEY N.M.P.M.

DESCRIPTION	1980' FNL	&	1980' FEL
1. 1980' FNL			
2. 1980' FEL			
3. 1980' FNL			
4. 1980' FEL			
5. 1980' FNL			
6. 1980' FEL			
7. 1980' FNL			
8. 1980' FEL			
9. 1980' FNL			
10. 1980' FEL			
11. 1980' FNL			
12. 1980' FEL			
13. 1980' FNL			
14. 1980' FEL			
15. 1980' FNL			
16. 1980' FEL			
17. 1980' FNL			
18. 1980' FEL			
19. 1980' FNL			
20. 1980' FEL			
21. 1980' FNL			
22. 1980' FEL			
23. 1980' FNL			
24. 1980' FEL			
25. 1980' FNL			
26. 1980' FEL			
27. 1980' FNL			
28. 1980' FEL			
29. 1980' FNL			
30. 1980' FEL			
31. 1980' FNL			
32. 1980' FEL			
33. 1980' FNL			
34. 1980' FEL			
35. 1980' FNL			
36. 1980' FEL			
37. 1980' FNL			
38. 1980' FEL			
39. 1980' FNL			
40. 1980' FEL			
41. 1980' FNL			
42. 1980' FEL			
43. 1980' FNL			
44. 1980' FEL			
45. 1980' FNL			
46. 1980' FEL			
47. 1980' FNL			
48. 1980' FEL			
49. 1980' FNL			
50. 1980' FEL			
51. 1980' FNL			
52. 1980' FEL			
53. 1980' FNL			
54. 1980' FEL			
55. 1980' FNL			
56. 1980' FEL			
57. 1980' FNL			
58. 1980' FEL			
59. 1980' FNL			
60. 1980' FEL			
61. 1980' FNL			
62. 1980' FEL			
63. 1980' FNL			
64. 1980' FEL			
65. 1980' FNL			
66. 1980' FEL			
67. 1980' FNL			
68. 1980' FEL			
69. 1980' FNL			
70. 1980' FEL			
71. 1980' FNL			
72. 1980' FEL			
73. 1980' FNL			
74. 1980' FEL			
75. 1980' FNL			
76. 1980' FEL			
77. 1980' FNL			
78. 1980' FEL			
79. 1980' FNL			
80. 1980' FEL			
81. 1980' FNL			
82. 1980' FEL			
83. 1980' FNL			
84. 1980' FEL			
85. 1980' FNL			
86. 1980' FEL			
87. 1980' FNL			
88. 1980' FEL			
89. 1980' FNL			
90. 1980' FEL			
91. 1980' FNL			
92. 1980' FEL			
93. 1980' FNL			
94. 1980' FEL			
95. 1980' FNL			
96. 1980' FEL			
97. 1980' FNL			
98. 1980' FEL			
99. 1980' FNL			
100. 1980' FEL			

OPERATOR OXY USA WTP LP

LEASE BRABANT No. 1

WEST TEXAS CONSULTANTS, INC.

ENGINEERS-PLANNERS-SURVEYORS

MIDLAND, TEXAS

915-685-3800