

District I

1625 N French Dr , Hobbs, NM 88240

District II

1301 W. Grand Avenue, Artesia, NM 88210

District III

1000 Rio Brazos Road, Aztec, NM 87410

District IV

1220 S St Francis Dr , Santa Fe, NM 87505

State of New Mexico
Energy Minerals and Natural Resources

Form C-101

May 27, 2004

Oil Conservation Division

1220 South St. Francis Dr.

Santa Fe, NM 87505

Submit to appropriate District Office

☐ AMENDED REPORT

APPLICATION FOR PERMIT TO DRILL, RE-ENTER, DEEPEN, PLUGBACK, OR ADD A ZONE

¹ Operator Name and Address Samson Resources Company 200 N. Loraine Street, Ste 1010 Midland, TX 79701		² OGRID Number 20165
³ Property Code 35951	⁴ Property Name Osudo 32 State Com	⁵ APL Number 30 - 025-38479
⁹ Proposed Pool 1 Osudo Wildcat Morrow Sand		¹⁰ Proposed Pool 2 2

⁷ Surface Location

UL or lot no	Section	Township	Range	Lot Idn	Feet from the	North/South line	Feet from the	East/West line	County
A	32	20S	36E	A	1115	North	800	East	Lea

⁸ Proposed Bottom Hole Location If Different From Surface

UL or lot no	Section	Township	Range	Lot Idn	Feet from the	North/South line	Feet from the	East/West line	County

Additional Well Information

¹¹ Work Type Code NW	¹² Well Type Code G	¹³ Cable/Rotary R	¹⁴ Lease Type Code S	¹⁵ Ground Level Elevation 3618'
¹⁶ Multiple N	¹⁷ Proposed Depth 11650'	¹⁸ Formation Morrow Sand	¹⁹ Contractor	²⁰ Spud Date
Depth to Groundwater 100'		Distance from nearest fresh water well 1 mile		Distance from nearest surface water 5 miles
Pit. <input type="checkbox"/> Liner Synthetic <input type="checkbox"/> ¹² mls thick Clay <input type="checkbox"/> Pit Volume: 20000 bbls Drilling Method: Closed-Loop System <input type="checkbox"/> Fresh Water <input type="checkbox"/> Brine <input type="checkbox"/> Diesel/Oil-based <input type="checkbox"/> Gas/Air <input type="checkbox"/>				

²¹ Proposed Casing and Cement Program

Hole Size	Casing Size	Casing weight/foot	Setting Depth	Sacks of Cement	Estimated TOC
17.5	13.375	48	400	300	0
12.25	9.625	40	5175	3150	1500
8.75	7	26	10500	1926	
6.125	4.5	11.6	11650	Log Caliper	10,000

²² Describe the proposed program. If this application is to DEEPEN or PLUG BACK, give the data on the present productive zone and proposed new productive zone Describe the blowout prevention program, if any. Use additional sheets if necessary

Samson proposes to drill and test the Morrow formations Approximately 1875' of surface casing will be set/cemented. If commercial, intermediate/production casing will be run/cemented, will perforate/stimulate as needed for production

MUD PROGRAM 0-1875' Fresh Water
1875'-5175' Cut Brine
5175'-10500' Cut Brine
10500'-11650' Cut Brine

Permit Expires 1 Year From Approval
Date Unless Drilling Underway

PROPOSED BOP PROGRAM Shaffer Double Ram, 10000 psi Working Pressure, 5000 psi, Test Pressure.

²³ I hereby certify that the information given above is true and complete to the best of my knowledge and belief. I further certify that the drilling pit will be constructed according to NMOCD guidelines ☐, a general permit ☐, or an (attached) alternative OCD-approved plan ☐.

Printed name: Duke Roush

Title Landman

E-mail Address droush@samson.com

Date June 27, 2007

Phone. (432) 683-7063

OIL CONSERVATION DIVISION

Approved by:

Title:

Approval Date

Expiration Date

Conditions of Approval Attached ☐

dm

DISTRICT I
1625 N. FRENCH DR., BOBBS, NM 86240

State of New Mexico
Energy, Minerals and Natural Resources Department

Form C-102

DISTRICT II
1301 W. GRAND AVENUE, ARTESIA, NM 88210

OIL CONSERVATION DIVISION
1220 SOUTH ST. FRANCIS DR.
Santa Fe, New Mexico 87505

Revised October 12, 2005
Submit to Appropriate District Office
State Lease - 4 Copies
Fee Lease - 3 Copies

DISTRICT III
1000 Rio Brazos Rd., Aztec, NM 87410

DISTRICT IV
1220 S. ST. FRANCIS DR., SANTA FE, NM 87505

WELL LOCATION AND ACREAGE DEDICATION PLAT

☐ AMENDED REPORT

API Number 30-025-38479	Pool Code 82120	Pool Name Osudo Morrow
Property Code 35951	Property Name OSUDO 32 STATE COM	Well Number 2
OGRID No. 20165	Operator Name SAMSON RESOURCES	Elevation 3611'

Surface Location

UL or lot No.	Section	Township	Range	Lot Idn	Feet from the	North/South line	Feet from the	East/West line	County
A	32	20-S	36-E		1115	NORTH	800	EAST	LEA

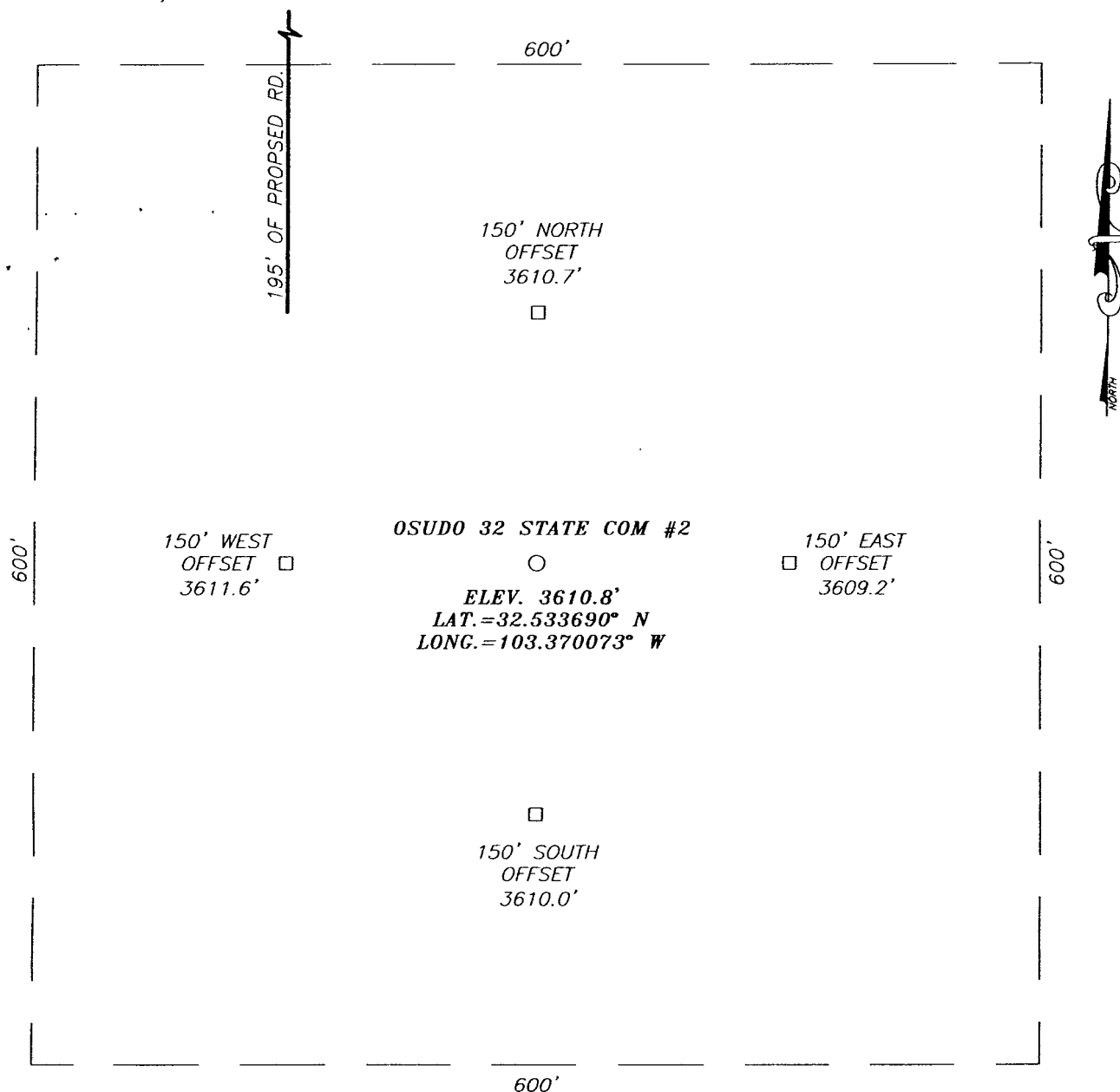
Bottom Hole Location If Different From Surface

UL or lot No.	Section	Township	Range	Lot Idn	Feet from the	North/South line	Feet from the	East/West line	County
Dedicated Acres 320	Joint or Infill	Consolidation Code	Order No.						

NO ALLOWABLE WILL BE ASSIGNED TO THIS COMPLETION UNTIL ALL INTERESTS HAVE BEEN CONSOLIDATED
OR A NON-STANDARD UNIT HAS BEEN APPROVED BY THE DIVISION

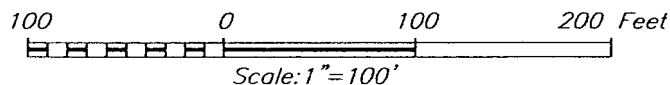
	<p>OPERATOR CERTIFICATION</p> <p>I hereby certify that the information herein is true and complete to the best of my knowledge and belief, and that this organization either owns a working interest or unleased mineral interest in the land including the proposed bottom hole location or has a right to drill this well at this location pursuant to a contract with an owner of such mineral or working interest, or to a voluntary pooling agreement or a compulsory pooling order heretofore entered by the division.</p> <p>Signature: <u>Duke Rough</u> Date: <u>6/27/07</u></p> <p>Printed Name: <u>Duke Rough</u></p> <p>SURVEYOR CERTIFICATION</p> <p>I hereby certify that the well location shown on this plat was plotted from field notes of actual surveys made by me or under my supervision, and that the same is true and correct to the best of my belief.</p> <p>Date Surveyed: <u>6/27/07</u></p> <p>Signature & Seal of Professional Surveyor: <u>Ronald J. Eidson</u></p> <p>Certificate No. <u>GARY EIDSON 12641</u> <u>RONALD J. EIDSON 3239</u></p>
--	-------------------------------------------------------------------------------------------------------------------------------------------------------------------------------------------------------------------------------------------------------------------------------------------------------------------------------------------------------------------------------------------------------------------------------------------------------------------------------------------------------------------------------------------------------------------------------------------------------------------------------------------------------------------------------------------------------------------------------------------------------------------------------------------------------------------------------------------------------------------------------------------------------------------------------------------------------------------------------------------------------------------------------------------------------------------------------------------------------

SECTION 32, TOWNSHIP 20 SOUTH, RANGE 36 EAST, N.M.P.M.,
 LEA COUNTY, NEW MEXICO



DIRECTIONS TO LOCATION

FROM THE INTERSECTION OF ST. HWY. #176 AND CO. RD. #E-30 (PEARSON RD.), GO NORTH ON PEARSON RD. APPROX. 3.8 MILES. TURN RIGHT AND GO EAST APPROX. 0.5. THIS LOCATION IS APPROX. 350 FEET SOUTH OF ROAD.



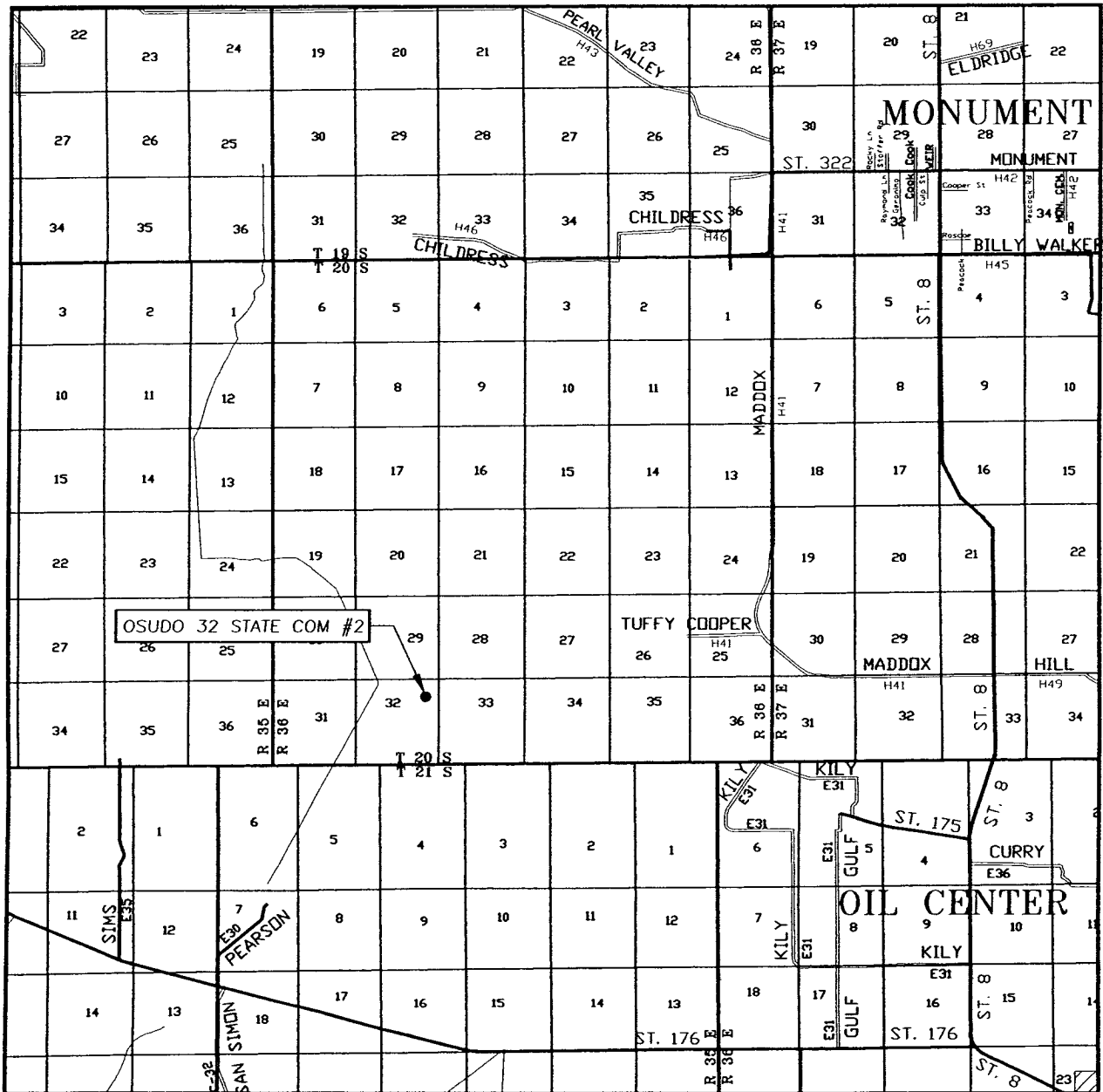
PROVIDING SURVEYING SERVICES
 SINCE 1946
JOHN WEST SURVEYING COMPANY
 412 N. DAL PASO
 HOBBS, N.M. 88240
 (505) 393-3117

SAMSON RESOURCES

OSUDO 32 STATE COM #2 WELL
 LOCATED 1115 FEET FROM THE NORTH LINE
 AND 800 FEET FROM THE EAST LINE OF SECTION 32,
 TOWNSHIP 20 SOUTH, RANGE 36 EAST, N.M.P.M.,
 LEA COUNTY, NEW MEXICO.

Survey Date: 6/21/07	Sheet 1 of 1 Sheets
W.O. Number: 07.11.0770	Dr By: AR
Date: 6/25/07	Disk: 07110770
	Rev 1:N/A
	Scale: 1"=100'

VICINITY MAP



SCALE: 1" = 2 MILES

SEC. 32 TWP. 20-S RGE. 36-E

SURVEY N.M.P.M.

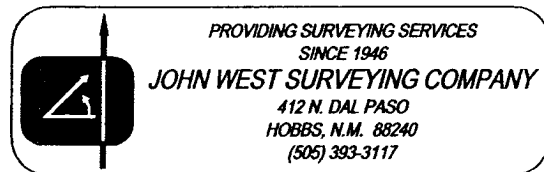
COUNTY LEA STATE NEW MEXICO

DESCRIPTION 1115' FNL & 800' FEL

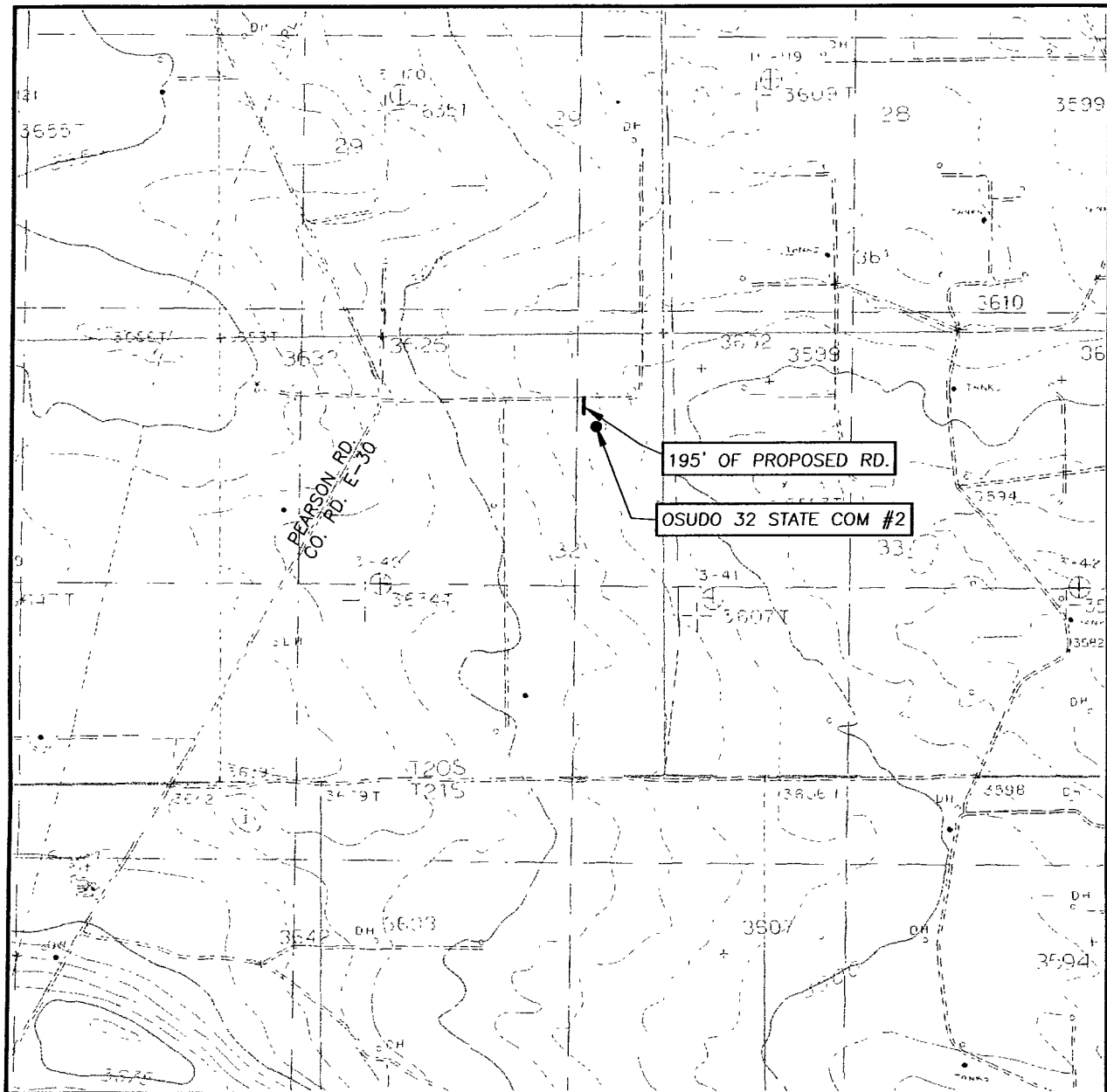
ELEVATION 3611'

OPERATOR SAMSON RESOURCES

LEASE OSUDO 32 STATE COM



LOCATION VERIFICATION MAP



SCALE: 1" = 2000'

CONTOUR INTERVAL:
MONUMENT SOUTH, N.M. - 5'
MONUMENT SOUTHWEST, N.M. - 5'

SEC. 32 TWP. 20-S RGE. 36-E

SURVEY N.M.P.M.

COUNTY LEA STATE NEW MEXICO

DESCRIPTION 1115' FNL & 800' FEL

ELEVATION 3611'

OPERATOR SAMSON RESOURCES

LEASE OSUDO 32 STATE COM

U.S.G.S. TOPOGRAPHIC MAP
MONUMENT SOUTH, N.M.

