

District I
1625 N. French Dr., Hobbs, NM 88240
District II
1301 W. Grand Avenue, Artesia, NM 88210
District III
1000 Rio Brazos Road, Aztec, NM 87410
District IV
1220 S. St. Francis Dr., Santa Fe, NM 87505

State of New Mexico
Energy Minerals and Natural Resources

Oil Conservation Division
1220 South St. Francis Dr.
Santa Fe, NM 87505

Form C-101
Revised March 17, 1999

Submit to appropriate District Office
State Lease - 6 Copies
Fee Lease - 5 Copies

☐ AMENDED REPORT

APPLICATION FOR PERMIT TO DRILL, RE-ENTER, DEEPEN, PLUGBACK, OR ADD A ZONE

¹ Operator Name and Address Chesapeake Operating, Inc. P. O. Box 18496 Oklahoma City, OK 73154-0496		² OGRID Number 147179
³ API Number 30-025-36139		⁶ Well No. 1
⁴ Property Code 31901	⁵ Property Name Russell State	

⁷ Surface Location

UL or lot no.	Section	Township	Range	Lot Idn	Feet from the	North/South line	Feet from the	East/West line	County
I	5	15S	35E		1980	South	990	East	Lea

⁸ Proposed Bottom Hole Location If Different From Surface

UL or lot no.	Section	Township	Range	Lot Idn	Feet from the	North/South line	Feet from the	East/West line	County

⁹ Proposed Pool 1

Austin Morrow Southwest Gas

¹⁰ Proposed Pool 2

¹¹ Work Type Code N	¹² Well Type Code O/G	¹³ Cable/Rotary R	¹⁴ Lease Type Code State	¹⁵ Ground Level Elevation 4024'
¹⁶ Multiple N	¹⁷ Proposed Depth 13,850'	¹⁸ Formation Morrow	¹⁹ Contractor Timber-Sharp	²⁰ Spud Date 02/15/03

²¹ Proposed Casing and Cement Program

Hole Size	Casing Size	Casing weight/foot	Setting Depth	Sacks of Cement	Estimated TOC
17-1/2	13-3/8	48#	0-400'	500	Surf
11"	8-5/8	32#	0-4500'	1400	Surf
7-7/8"	5-1/2	17#	0-13850'	1100	4500'

²² Describe the proposed program. If this application is to DEEPEN or PLUG BACK, give the data on the present productive zone and proposed new productive zone.

Describe the blowout prevention program, if any. Use additional sheets if necessary.

Chesapeake proposes to drill to a TD of 13,850' in the Morrow formation with Timber-Sharp as the drilling contractor.

BOP consists of 11" 5M# blind & pipe rams & 11" 5M# Annular (See Schematic)

Permit Expires 1 Year From Approval
Date Unless Drilling Underway

²³ I hereby certify that the information given above is true and complete to the best of my knowledge and belief. Signature: <i>Barbara J. Bale</i> Printed name: Barbara J. Bale Title: Regulatory Analyst Date: 01/27/03 Phone: (405) 848-8000		OIL CONSERVATION DIVISION Approved by: ORIGINAL SIGNED BY PAUL F. KAUTZ Title: PETROLEUM ENGINEER Approval: JAN 30 2003 Expiration Date: Conditions of Approval: Attached <input type="checkbox"/>	
--	--	--	--

mp

DISTRICT I

P.O. Box 1980, Hobbs, NM 88241-1980

State of New Mexico

Energy, Minerals and Natural Resources Department

Form C-102

Revised February 10, 1994

Submit to Appropriate District Office

State Lease - 4 Copies

Fee Lease - 3 Copies

DISTRICT II

P.O. Drawer DD, Artesia, NM 88211-0719

OIL CONSERVATION DIVISION

P.O. Box 2088

Santa Fe, New Mexico 87504-2088

DISTRICT III

1000 Rio Brazos Rd., Aztec, NM 87410

DISTRICT IV

P.O. BOX 2088, SANTA FE, N.M. 87504-2088

WELL LOCATION AND ACREAGE DEDICATION PLAT

☐ AMENDED REPORT

API Number 30-025-36139	Pool Code 96664	Pool Name Austin Morrow Southwest Gas
Property Code 31901	Property Name RUSSELL STATE	Well Number 1
OGRID No. 147179	Operator Name CHESAPEAKE OPERATING, INC.	Elevation 4024'

Surface Location

UL or lot No.	Section	Township	Range	Lot Idn	Feet from the	North/South line	Feet from the	East/West line	County
1	5	15-S	35-E		1980	SOUTH	990	EAST	LEA

Bottom Hole Location If Different From Surface

UL or lot No.	Section	Township	Range	Lot Idn	Feet from the	North/South line	Feet from the	East/West line	County
Dedicated Acres 320	Joint or Infill	Consolidation Code	Order No.						

NO ALLOWABLE WILL BE ASSIGNED TO THIS COMPLETION UNTIL ALL INTERESTS HAVE BEEN CONSOLIDATED
OR A NON-STANDARD UNIT HAS BEEN APPROVED BY THE DIVISION

LOT 4	LOT 3	LOT 2	LOT 1
42.71 Ac.	42.54 Ac.	42.36 Ac.	42.19 Ac.
<p>GEODETIC COORDINATES NAD 27 NME Y = 744885.4 X = 778697.3 LAT. 33°02'39.97"N LONG. 103°25'25.86"W</p>			
<p>990'</p> <p>1980'</p>			

OPERATOR CERTIFICATION

I hereby certify the the information contained herein is true and complete to the best of my knowledge and belief.

Barbara J. Bale
Signature

Barbara J. Bale
Printed Name

Regulatory Analyst
Title

01/27/03
Date

SURVEYOR CERTIFICATION

I hereby certify that the well location shown on this plat was plotted from field notes of actual surveys made by me or under my supervision, and that the same is true and correct to the best of my belief.

JANUARY 20, 2003

Date Surveyed

Signature & Seal of Professional Surveyor

Barry J. Eidsen 1/21/03

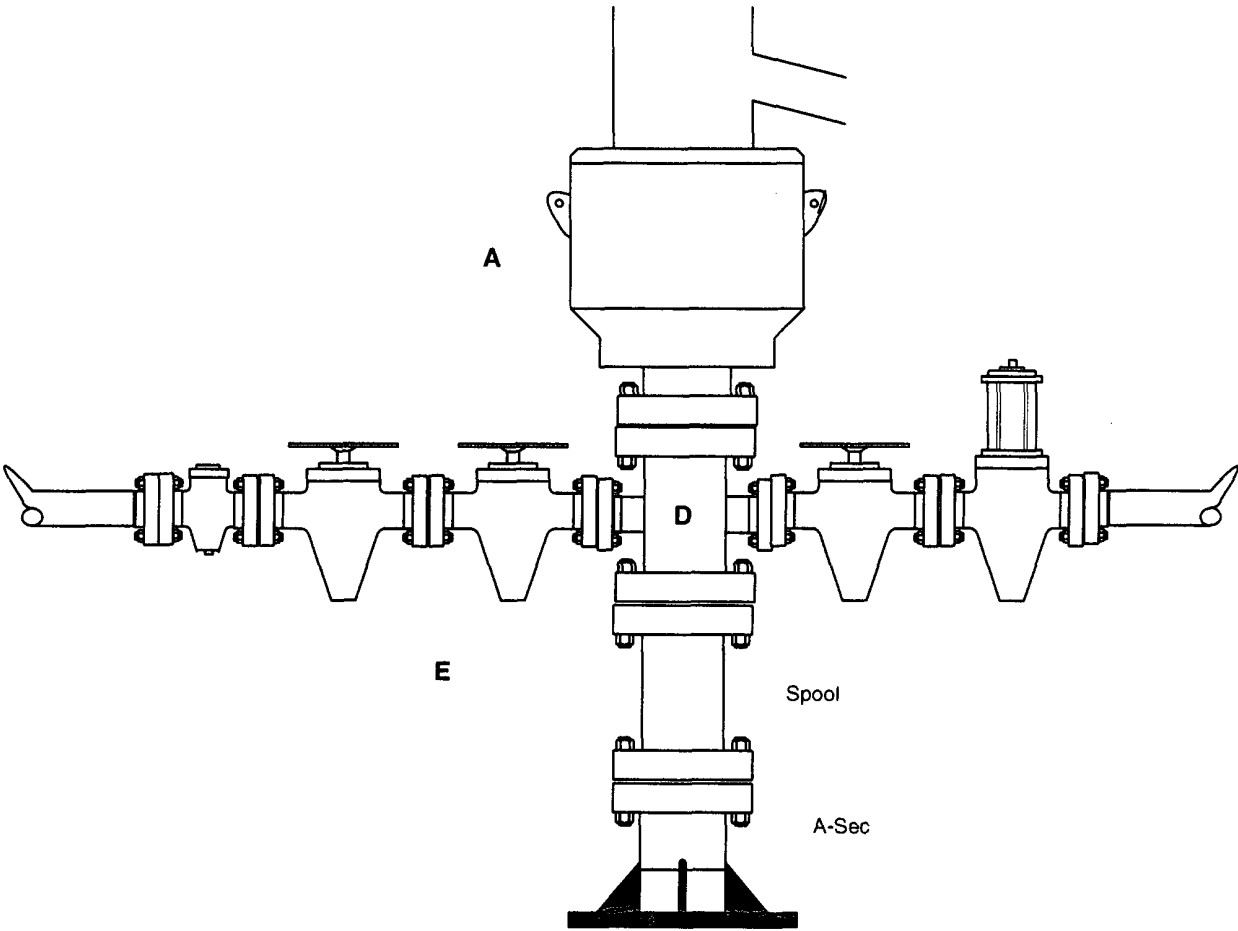
03.11.0071

Certificate No. RONALD J. EIDSON 3239
GARY EIDSON 12841

BLOWOUT PREVENTOR SCHEMATIC
CHESAPEAKE OPERATING INC

WELL : RUSSELL STATE 1-5
FIELD :
RIG : TMB/SHRP
COUNTY : Lea STATE: New Mexico
OPERATION: Drill out below 13-5/8" Casing

	SIZE	PRESSURE	DESCRIPTION
A	13-5/8"	5,000#	Annular
D	13-5/8"	10,000#	Mud Cross
Spool		13-5/8" 3M x 13-5/8" 10M	
A-Sec		13-5/8" SOW x 13-5/8" 3M	



Kill Line

SIZE	PRESSURE	DESCRIPTION
2"	10,000#	Check Valve
2"	10,000#	Gate Valve
2"	10,000#	Gate Valve

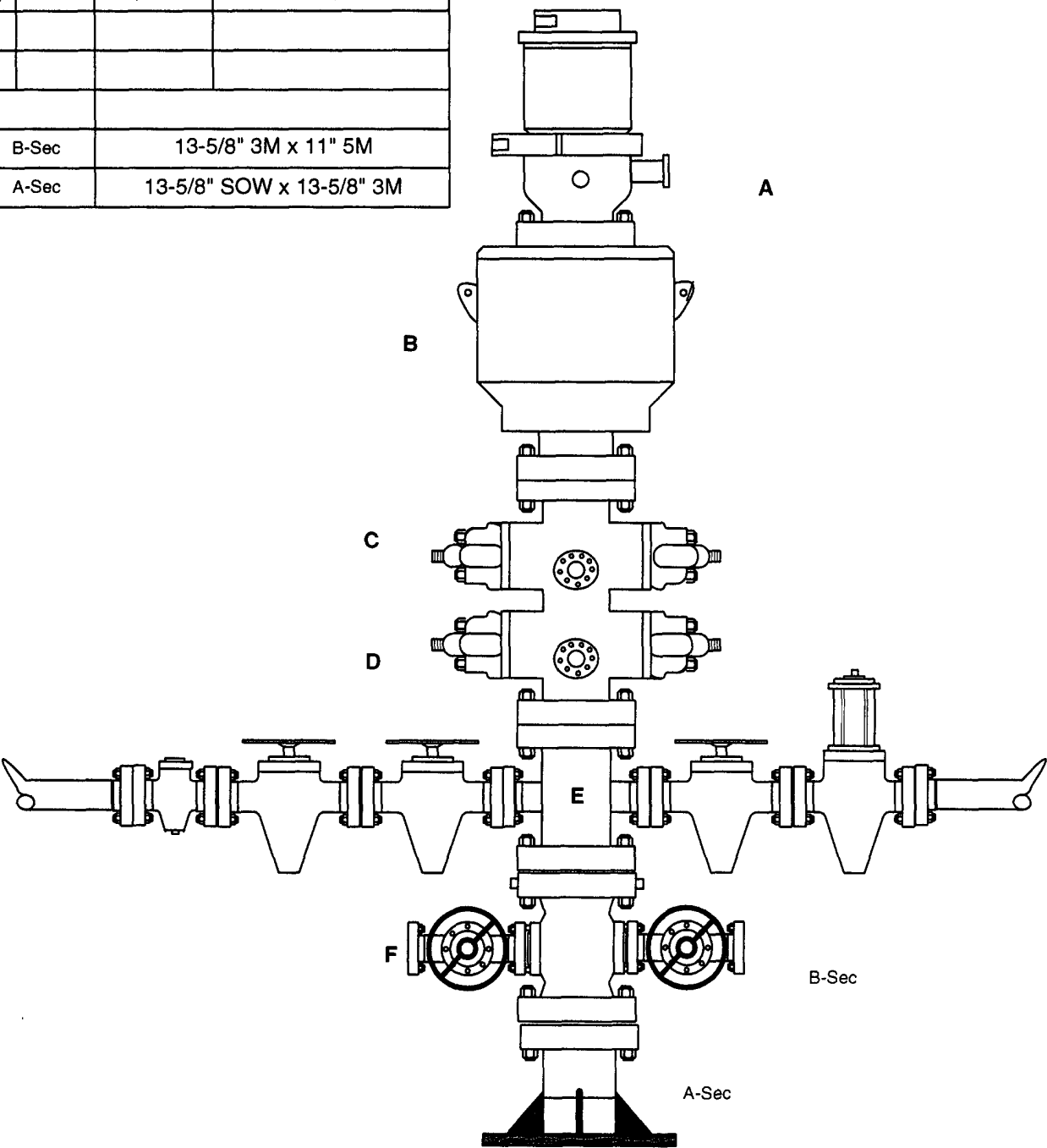
Choke Line

SIZE	PRESSURE	DESCRIPTION
4"	10,000#	Gate Valve
4"	10,000#	HCR Valve

BLOWOUT PREVENTOR SCHEMATIC
CHESAPEAKE OPERATING INC

WELL : RUSSELL STATE 1-5
FIELD :
RIG : TMB/SHRP
COUNTY : Lea STATE: New Mexico
OPERATION: Drill out below 8-5/8" Casing

SIZE		PRESSURE	DESCRIPTION
A	11"	500#	Rot Head
B	11"	5,000#	Annular
C	11"	5,000#	Pipe Rams
D	11"	5,000#	Blind Rams
E	11"	5,000#	Mud Cross
B-Sec		13-5/8" 3M x 11" 5M	
A-Sec		13-5/8" SOW x 13-5/8" 3M	



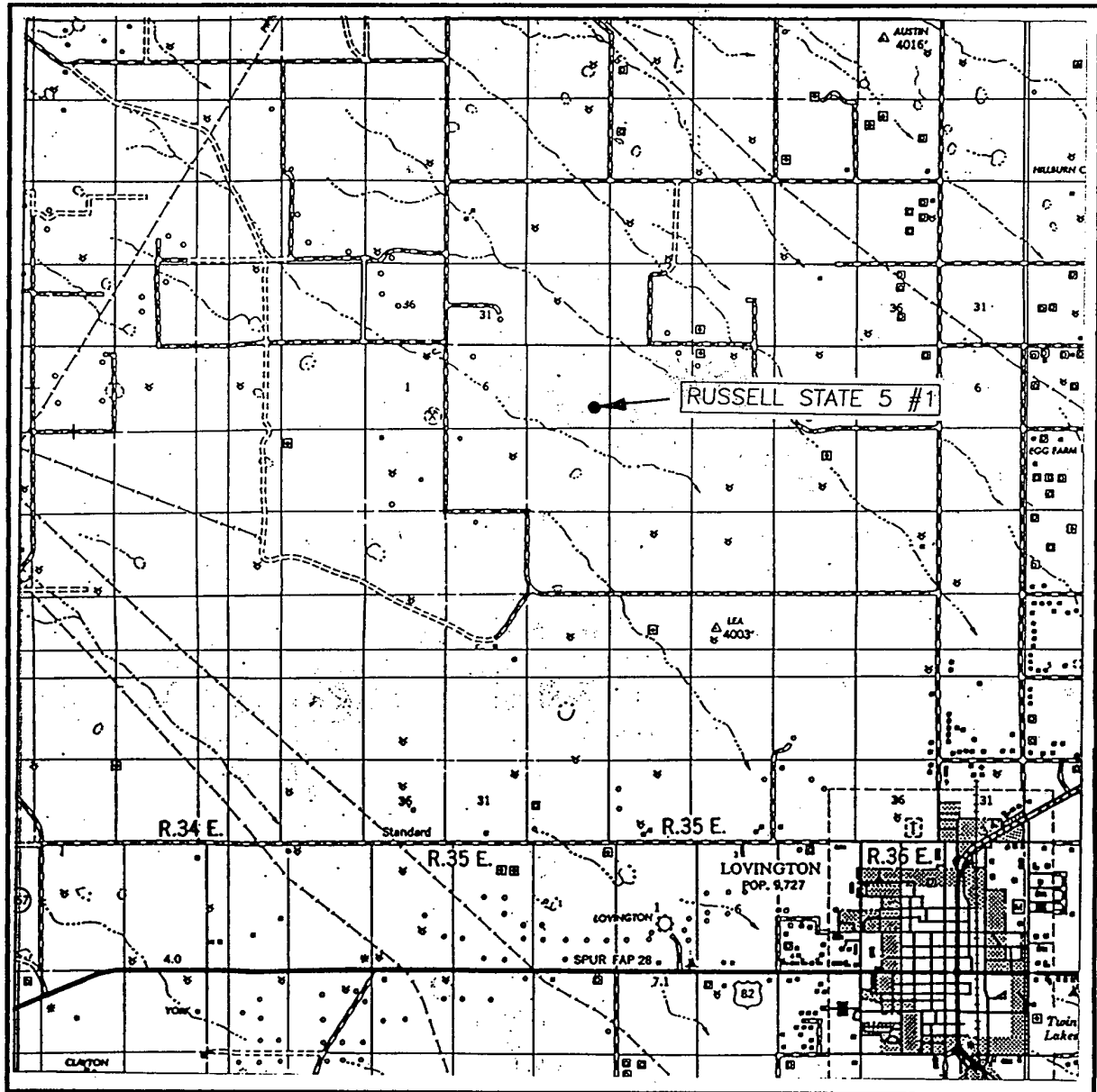
Kill Line

SIZE	PRESSURE	DESCRIPTION
2"	5,000#	Check Valve
2"	5,000#	Gate Valve
2"	5,000#	Gate Valve

Choke Line

SIZE	PRESSURE	DESCRIPTION
4"	5,000#	Gate Valve
4"	5,000#	HCR Valve

VICINITY MAP



SCALE: 1" = 2 MILES

SEC. 5 TWP. 15-S RGE. 35-E

SURVEY N.M.P.M.

COUNTY LEA

DESCRIPTION 1980' FSL & 990' FEL

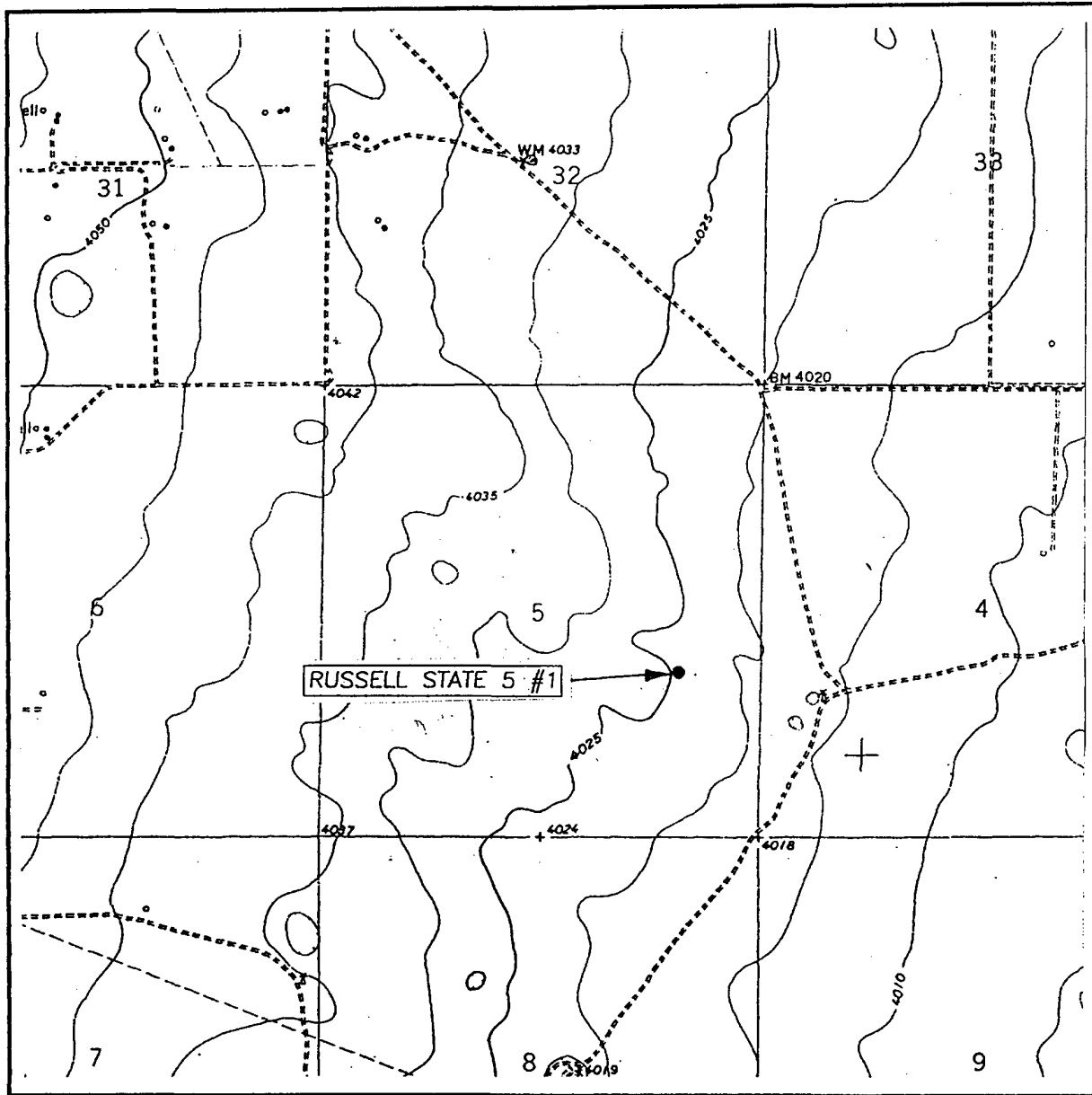
ELEVATION 4024'

OPERATOR CHESAPEAKE OPERATING, INC.

LEASE RUSSELL STATE 5 #1

JOHN WEST SURVEYING
HOBBS, NEW MEXICO
(505) 393-3117

LOCATION VERIFICATION MAP



SCALE: 1" = 2000'

CONTOUR INTERVAL: 10'
HILLBURN CITY SW, N.M.

SEC. 5 TWP. 15-S RGE. 35-E

SURVEY N.M.P.M.

COUNTY LEA

DESCRIPTION 1980' FSL & 990' FEL

ELEVATION 4024'

OPERATOR CHESAPEAKE OPERATING, INC.

LEASE RUSSELL STATE 5

U.S.G.S. TOPOGRAPHIC MAP

HILLBURN CITY SW, N.M.

JOHN WEST SURVEYING
HOBBS, NEW MEXICO
(505) 393-3117