

**NEW MEXICO OIL CONSERVATION COMMISSION
WELL LOCATION AND ACREAGE DEDICATION PLAT**

Form C-102
Supersedes C-128
Effective 1-1-65

All distances must be from the outer boundaries of the Section.

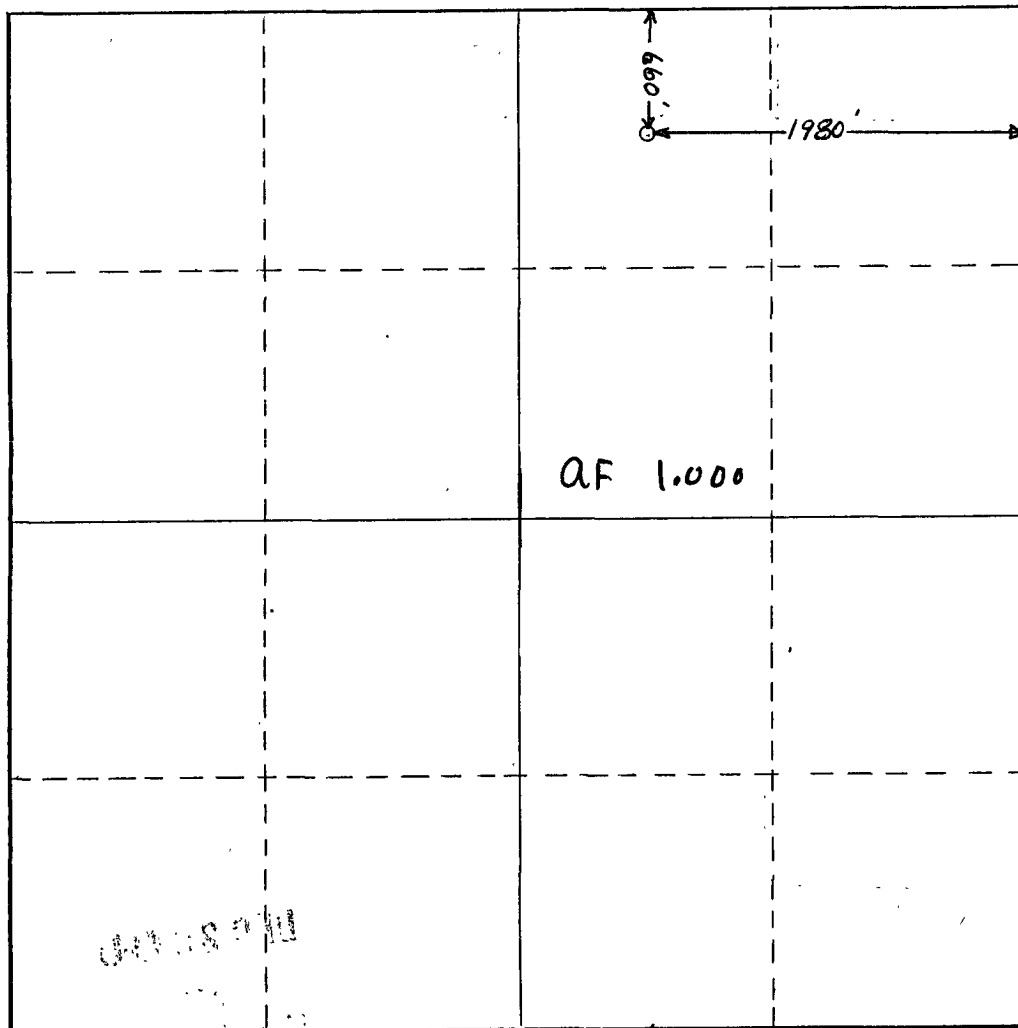
Operator Lignum Oil & Chisos Operating Inc.			Lease State 1-30		Well No. 1-30
Unit Letter B	Section 30	Township 12S	Range 34E	County Lea	
Actual Footage Location of Well: 660 feet from the North line and 1980 feet from the East line					
Ground Level Elev: GL 4203'	Producing Formation Penn	Pool Hightower East Penn (Upper)		Dedicated Acreage: 80 Acres	

1. Outline the acreage dedicated to the subject well by colored pencil or hachure marks on the plat below.
2. If more than one lease is dedicated to the well, outline each and identify the ownership thereof (both as to working interest and royalty).
3. If more than one lease of different ownership is dedicated to the well, have the interests of all owners been consolidated by communitization, unitization, force-pooling, etc?

☐ Yes ☐ No If answer is "yes," type of consolidation _____

If answer is "no," list the owners and tract descriptions which have actually been consolidated. (Use reverse side of this form if necessary.) _____

No allowable will be assigned to the well until all interests have been consolidated (by communitization, unitization, forced-pooling, or otherwise) or until a non-standard unit, eliminating such interests, has been approved by the Commission.



CERTIFICATION

I hereby certify that the information contained herein is true and complete to the best of my knowledge and belief.

Ron Gilbreath
RON GILBREATH

Name

Agent

Position

Lignum Oil Company

Company

12/27/88

Date

I hereby certify that the well location shown on this plat was plotted from field notes of actual surveys made by me or under my supervision, and that the same is true and correct to the best of my knowledge and belief.

Date Surveyed

Registered Professional Engineer
and/or Land Surveyor

Certificate No.

Corrected Allow for 1.00 E



STATE OF NEW MEXICO
ENERGY, MINERALS AND NATURAL RESOURCES DEPARTMENT
OIL CONSERVATION DIVISION
HOBBS DISTRICT OFFICE

December 28, 1988

GARREY CARRUTHERS
GOVERNOR

POST OFFICE BOX 1980
HOBBS, NEW MEXICO 88241-1980
(505) 393-6161

Lignum Oil Company
c/o Chisos Operating Inc.
P.O. Box 10865
Midland, TX 79702

Attn: Mr. Ron Gilbreath

Re: Recompletion
State 1-30 Well #1
Unit B, Sec. 30, T12S, R34E

Gentlemen:

The recompletion report and request for allowable has been received for the above-referenced well in the East Hightower Upper Penn Pool.

Since the original completion of this well in the Penn the East Hightower Penn Pool was divided into upper and lower and put on 80-acre spacing. It appears your lower penn completion was grandfathered in with a 40-acre spacing proration unit and has an allowable factor of .500.

However since the special rules are in effect at the time of the recompletion to the Upper Penn you will be required to dedicate 80 acres to the well or obtain approval of a non-standard proration unit. This can be done administratively by making application to our Santa Fe office and notifying your offset operators. If you can obtain waivers there will be no waiting period.

Since the well is at a standard location we will go ahead and assign an allowable based on 40 acre proration unit and you will have 60 days in which to obtain approval of the non-standard proration unit. If at that time you have not obtained approval of the non-standard proration unit your allowable will be cancelled.

Please submit to this office Form C-102, acreage dedication plat, for the East Hightower Uppen Penn completion.

Very truly yours,

OIL CONSERVATION DIVISION

Jerry Sexton
Supervisor, District I

ed