

## State of New Mexico

Energy, Minerals and Natural Resources Department

## DISTRICT I

1625 N. FRENCH DR., HOBBS, NM 88240

## DISTRICT II

1301 W. GRAND AVENUE, ARTESIA, NM 88210

## DISTRICT III

1000 Rio Brazos Rd., Aztec, NM 87410

## DISTRICT IV

1220 S. ST. FRANCIS DR., SANTA FE, NM 87505

OIL CONSERVATION DIVISION  
1220 SOUTH ST. FRANCIS DR.  
Santa Fe, New Mexico 87505

Form C-102

Revised October 12, 2005

Submit to Appropriate District Office

State Lease - 4 Copies

Fee Lease - 3 Copies

## WELL LOCATION AND ACREAGE DEDICATION PLAT

☐ AMENDED REPORT

|                            |                                     |                                     |
|----------------------------|-------------------------------------|-------------------------------------|
| API Number<br>30-025-38400 | Pool Code<br>33225                  | Pool Name<br>House; Blinebry, South |
| Property Code<br>303209    | Property Name<br>BLANKENSHIP        | Well Number<br>6                    |
| OGRID No.<br>873           | Operator Name<br>APACHE CORPORATION | Elevation<br>3564'                  |

## Surface Location

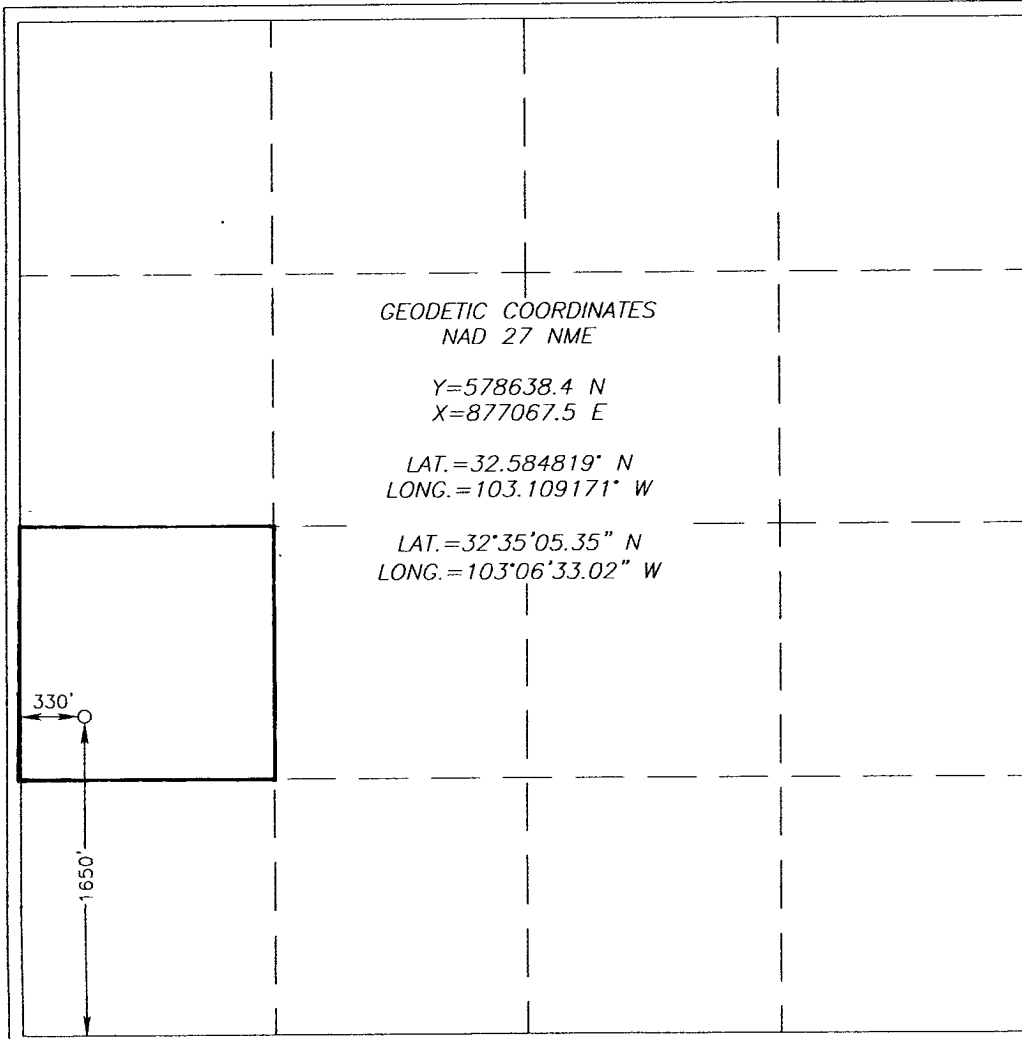
| UL or lot No. | Section | Township | Range | Lot Idn | Feet from the | North/South line | Feet from the | East/West line | County |
|---------------|---------|----------|-------|---------|---------------|------------------|---------------|----------------|--------|
| L             | 12      | 20-S     | 38-E  |         | 1650          | SOUTH            | 330           | WEST           | LEA    |

## Bottom Hole Location If Different From Surface

| UL or lot No. | Section | Township | Range | Lot Idn | Feet from the | North/South line | Feet from the | East/West line | County |
|---------------|---------|----------|-------|---------|---------------|------------------|---------------|----------------|--------|
|               |         |          |       |         |               |                  |               |                |        |

|                       |                 |                    |           |
|-----------------------|-----------------|--------------------|-----------|
| Dedicated Acres<br>40 | Joint or Infill | Consolidation Code | Order No. |
|-----------------------|-----------------|--------------------|-----------|

NO ALLOWABLE WILL BE ASSIGNED TO THIS COMPLETION UNTIL ALL INTERESTS HAVE BEEN CONSOLIDATED  
OR A NON-STANDARD UNIT HAS BEEN APPROVED BY THE DIVISION



## OPERATOR CERTIFICATION

I hereby certify that the information herein is true and complete to the best of my knowledge and belief, and that this organization either owns a working interest or unleased mineral interest in the land including the proposed bottom hole location or has a right to drill this well at this location pursuant to a contract with an owner of such mineral or working interest, or to a voluntary pooling agreement or a compulsory pooling order heretofore entered by the division.

Sophie Mackay 8/28/07  
Signature Date

Sophie Mackay  
Printed Name

## SURVEYOR CERTIFICATION

I hereby certify that the well location shown on this plat was plotted from field notes of actual surveys made by me or under my supervision, and that the same is true and correct to the best of my belief.

GARY G. EIDSON  
APRIL 18/2007  
Date Surveyed 12641  
Signature & Seal of Professional Surveyor  
07.11.0514

Certificate No. GARY EIDSON 12641