

# Exhibit "A"

## DISTRICT I

1625 N. French Dr., Hobbs, NM 88240

## DISTRICT II

1301 W. Grand Avenue, Artesia, NM 88210

## DISTRICT III

1000 Rio Brazos Rd., Aztec, NM 87410

## DISTRICT IV

1220 S. St. Francis Dr., Santa Fe, NM 87505

State of New Mexico  
Energy, Minerals and Natural Resources Department

## OIL CONSERVATION DIVISION

1220 South St. Francis Dr.  
Santa Fe, New Mexico 87505

Form C-102  
Revised October 12, 2005

Submit to Appropriate District Office  
State Lease - 4 Copies  
Fee Lease - 3 Copies

☐ AMENDED REPORT

### WELL LOCATION AND ACREAGE DEDICATION PLAT

API Number <b>30-025-38563</b>	Pool Code <b>97051</b>	Pool Name <b>Bell Lake</b> <del>Undesignated (Delaware)</del> <b>South</b>
Property Code <b>35983</b>	Property Name <b>BELL LAKE</b>	Well Number <b>30</b>
OGRID No. <b>233545</b>	Operator Name <b>BOLD ENERGY, LP</b>	Elevation <b>3593'</b>

#### Surface Location

UL or lot No.	Section	Township	Range	Lot Idn	Feet from the	North/South line	Feet from the	East/West line	County
N	5	24 S	34 E		990	SOUTH	1980	WEST	LEA

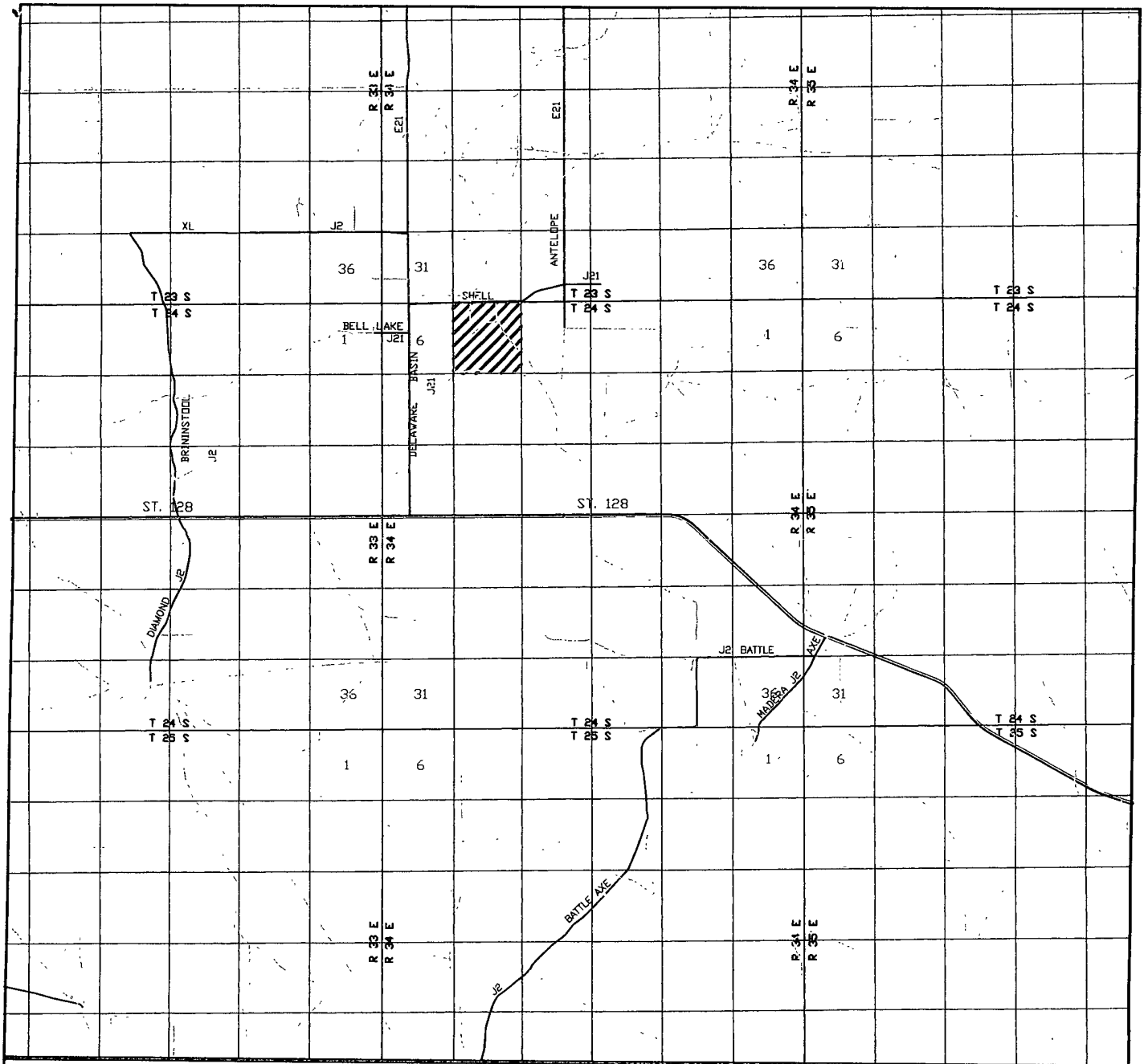
#### Bottom Hole Location If Different From Surface

UL or lot No.	Section	Township	Range	Lot Idn	Feet from the	North/South line	Feet from the	East/West line	County
Dedicated Acres <b>40</b>		Joint or Infill		Consolidation Code		Order No.			

NO ALLOWABLE WILL BE ASSIGNED TO THIS COMPLETION UNTIL ALL INTERESTS HAVE BEEN CONSOLIDATED  
OR A NON-STANDARD UNIT HAS BEEN APPROVED BY THE DIVISION

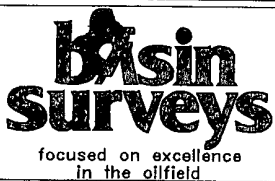
	<b>OPERATOR CERTIFICATION</b>  I hereby certify that the information contained herein is true and complete to the best of my knowledge and belief, and that this organization either owns a working interest or unleased mineral interest in the land including the proposed bottom hole location pursuant to a contract with an owner of such a mineral or working interest, or to a voluntary pooling agreement or a compulsory pooling order heretofore entered by the division.  <i>Lee Ann Rollins</i> 7/17/07 Signature Date <i>Lee Ann Rollins</i> Printed Name
	<b>SURVEYOR CERTIFICATION</b>  I hereby certify that the well location shown on this plat was plotted from field notes of actual surveys made by me or under my supervision, and that the same is true and correct to the best of my belief.  JULY 11, 2007 Date Surveyed <i>Gary L. Jones</i> Signature & Seal Professional Surveyor Certificate No. Gary L. Jones 7977
	BASIN SURVEYS

# Exhibit "C"



## BELL LAKE #30

Located at 990' FSL AND 1980' FWL  
 Section 5, Township 24 South, Range 34 East,  
 N.M.P.M., Lea County, New Mexico.



P.O. Box 1786  
 1120 N. West County Rd.  
 Hobbs, New Mexico 88241  
 (505) 393-7316 - Office  
 (505) 392-3074 - Fax  
 basinsurveys.com

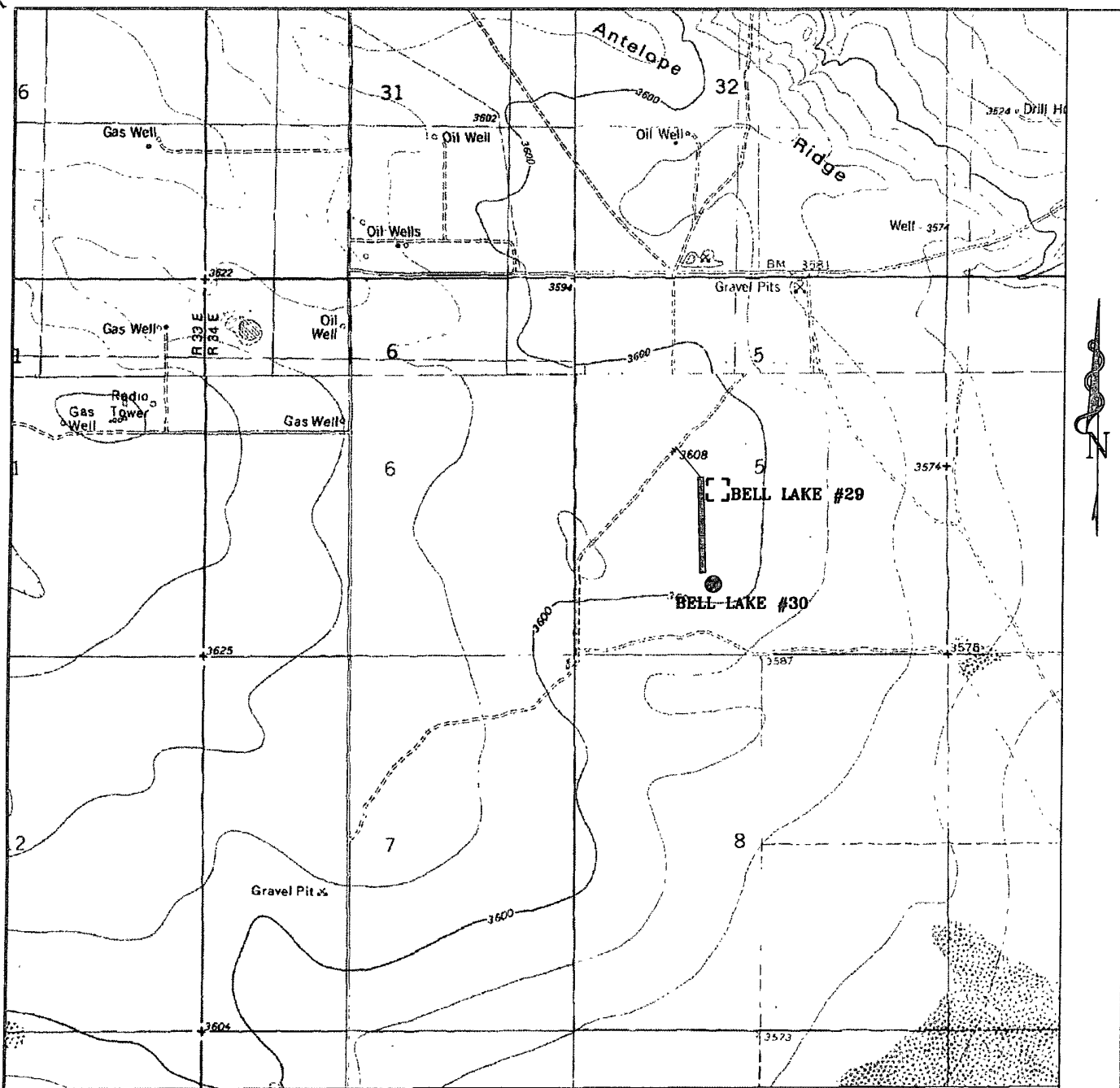
W.O. Number: JMS 18277TR

Survey Date: 07-11-2007

Scale: 1" = 2 MILES

Date: 07-12-2007

**BOLD ENERGY,  
 L.P.**



### BELL LAKE #30

Located at 990' FSL AND 1980' FWL  
 Section 5, Township 24 South, Range 34 East,  
 N.M.P.M., Lea County, New Mexico.



focused on excellence  
 in the oilfield

P.O. Box 1786  
 1120 N. West County Rd.  
 Hobbs, New Mexico 88241  
 (505) 393-7316 - Office  
 (505) 392-3074 - Fax  
 basinsurveys.com

W.O. Number. 18277T

Survey Date: 07-11-2007

Scale: 1" = 2000'

Date: 07-12-2007

**BOLD ENERGY**  
**L.P.**

# Drilling Prognosis

Preliminary

July 18, 2007

Operator: BOLD ENERGY, LP Field: Undesignated (Delaware)  
Well: Bell Lake #30 API: 30 - 025 - Pending  
Drilling Permit: BLM Approval - Pending AFE: Pending

## General Information

Location: 990' FSL & 1980' FWL, Section 5 - T24S - R34E Lea County, New Mexico

Elevation: 3593' GL TD: 8980' RKB: 18'

Objectives: Brushy Canyon "A" & "I" Sands 7395' - 7410' & 8495' - 8535'

Kaiser - Francis Oil Company Objective: Bone Spring LS @ 8810' - 8910'

Drilling Contractor: Nabors Drilling #142

Contractor Office: 432 / 550-7808 Supt: Don Nelson (664-9990)

Toolpushers: Roy Brumfield / Martin Alvarado Cell: 432 / 664-9942

Sierra Supervisor: Tony Vickery / Greg Fore Cell: 432 / 557-1223

## Drilling Program

Hole Size	Depth	Casing	Weight	Grade	Connect	Cement	TOC
12¼"	1250'	8 5/8"	24	J-55	STC	675 sx	Surface
7 7/8"	8980'	5½"	17	L-80	LTC	DV @ 5500' 625 sx & 700 sx	1000'

## Wellhead / BOPE

Wellhead	Larkin FIG 92 SOW - 2000 psi	Larkin FIG 92 8 5/8" 8R - 3000 psi	Larkin Type "R" 5½" 8R - 3000 psi
BOPE	SRRA	13 5/8" - 5K Stack	700' - TD

## Mud Program

Interval	Type	MW	VIS	FL
0' - 1225'	FW - Spud	8.4 - 9.2	34 - 38	NC
1225' - 8950'	Brine w/ sweeps	10.0 - 10.2	28 - 30	NC

Company: NOVA MUD, INC. 432 / 570-6663 Office: Dale Welch / Tech Advisor 432 / 557-1228

Engineer: Rick Rippey 505 / 631-9597 Warehouse: 800 / 530-8786

**Geological Data**

**Geologist:** John Worrall    **Phone:** 505 / 622-5893 office    432 / 230-9431 cell    Home: 505 / 622-2768

**Estimated Formation Tops: (GL =3599')**

Formation	Subsea	MD	Formation	Subsea	MD
Rustler	2439'	1220'	Brushy Canyon "A"	-3796'	7395' - 7410'
Salt			Brushy Canyon "I"	-4896	8495' - 8535'
Anhydrite					
Salt					
Delaware	-1551'	5150'	Bone Spring LS	-5211	8810'
Cherry Canyon	-2481'	6080'	Bone Spring LS, Base	-5311'	8910'
Bs Manzanita			TD	-5381'	8980'

**Evaluation Program**

**Mud Logs:** 5100' to TD    **Mud Logger:** WOODCO Logging / Paul Amancio

**Phone:** Jim Wood 505 / 887-2469 office    505 / 361-3059 cell

**DST / Coring Intervals:** None Anticipated

**E-Log Suite:** Triple Combo TD – 5000'. Pull GR - N to surface. Potential 20 SWC    No RFT's

**Logging Company:** Halliburton

**Contact:** Richard Kelley

**Location:** Hobbs, New Mexico

**Phone:** 505 / 914-0324 cell    505 / 392-0776 office

**Completion**

Completion is expected to be a single, rod-pumped Delaware oil well. Intervals within objective zone will be selectively perfed, fraced down 5½" casing and placed on rod pump. (Note: to be cased through Bone Springs to accommodate future completion by Kaiser-Francis Oil Company.)

**Emergency Contacts / Notifications**

Sierra Engineering	Drilling Superintendent	Russ Ginanni	432 / 425-7450 cell 432 / 683-8000 off
Sierra Engineering	HSE Manager	Montie Low	432 / 559-8950 cell 432 / 683-8000 off
Bold Energy, LP	President	Joe Castillo	432 / 230-0202 cell 432 / 686-1100 off
Bold Energy, LP	Operations Manager	Shannon Klier	432 / 296-8602 cell 432 / 686-1100 off
BLM	Hobbs Field Station	Notifications Engineering	505 / 393-3612 505 / 706-2779

**Directions**

From the intersection of CR 21 and State Highway 128 **(1)** go north on CR 21 for 3.0 miles to Shell Road; **(2)** turn right (east) onto Shell Road for 0.9 mile to lease road; **(3)** turn right and follow road south for 0.2 mile to new lease road on left **(4)** follow road to new well pad (Bell Lake #29) and continue south past this well into location.

# Drilling Prognosis

July 7, 2007

Operator: BOLD ENERGY, LP  
Well: Bell Lake Unit #30

## Additional Information

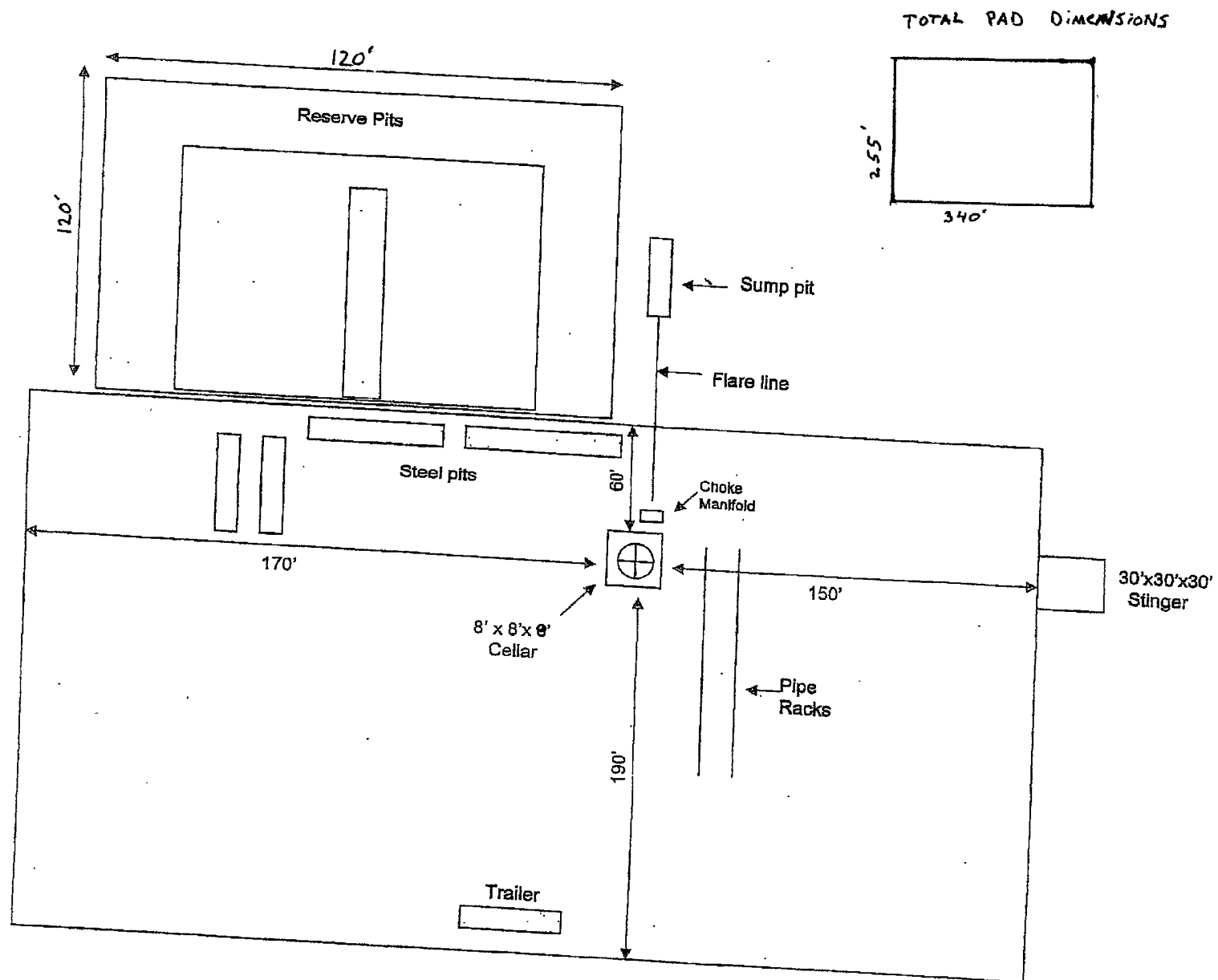
**Casing-minimum safety factors for burst/collapse/tension:**  
1.0 for burst, 1.3 for collapse, 2.0 for tensile

**Indicate whether casing is new or used:** All casing will be new

**BOP kill line size:** 2"

**BOP frequency of testing while drilling:**  
Pressure tested per Onshore Order #2 when installed, function tested daily

**Proposed trajectory, plan view, vertical view**  
Vertical wellbores, no directional drilling is planned

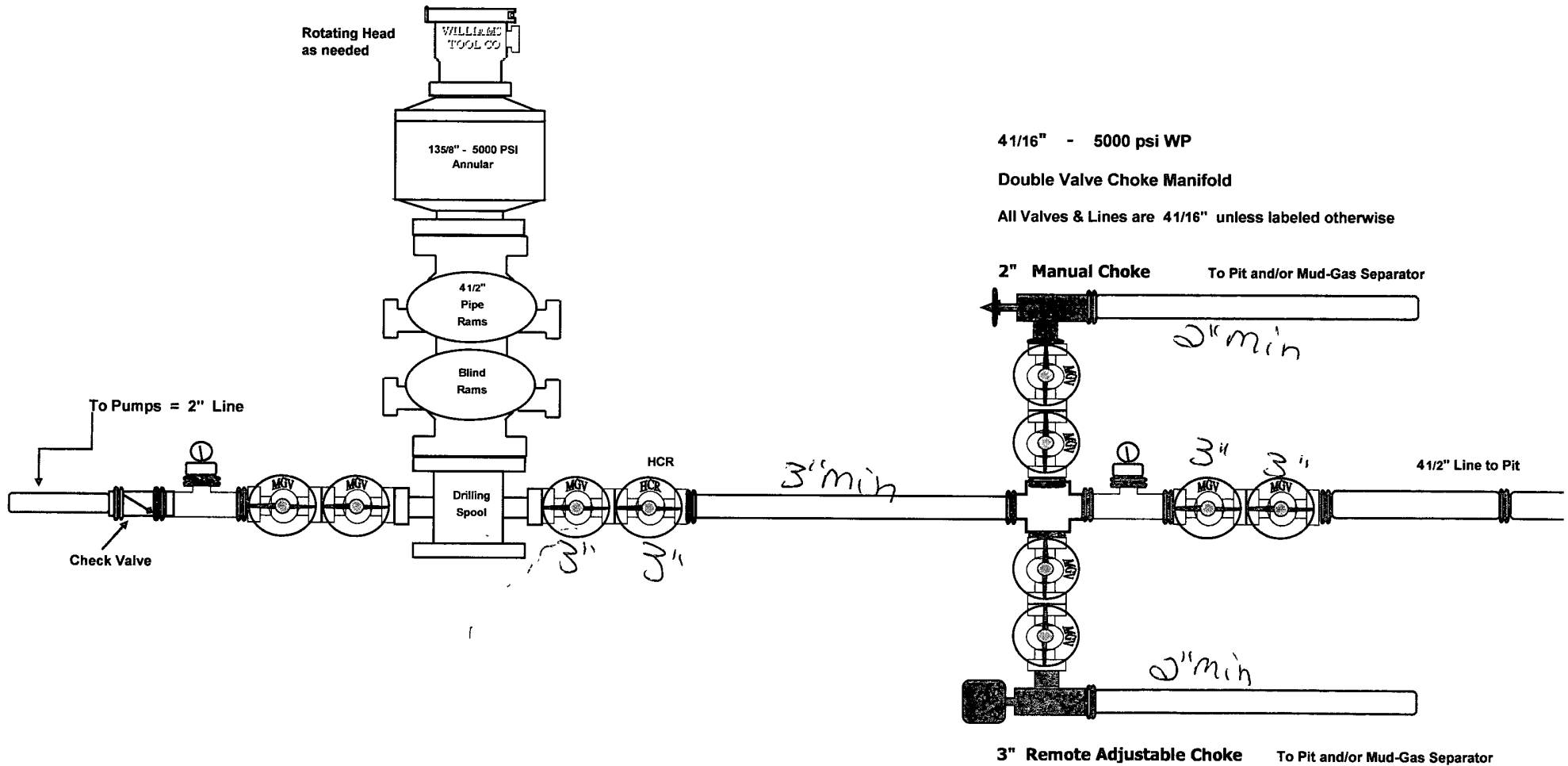


# BOLD ENERGY, LP

Bell Lake Nos. 27, 28, 29, 30

Lea County, New Mexico

## 135/8" - 5K Stack





# Drilling Prognosis

August 16, 2007

Operator: BOLD ENERGY, LP  
Well: Bell Lake Unit #30

## Additional Information

### Geological Information

The only oil-bearing formations will be from 7000 to 8800 in the Delaware Mountain Group Brushy Canyon formation. All of the Bell Canyon and Cherry Canyon sandstones contain salt brine formation water. The only fresh water expected is between surface and the depth of surface casing.

### Anticipated BHP:

Brushy Canyon "A": 3,050 psi  
Brushy Canyon "I": 3,500 psi  
Bone Spring: 3,650 psi

## Wellhead / BOPE

Wellhead	Larkin FIG 92 SOW - 2000 psi	Larkin FIG 92 8 5/8" 8R - 3000 psi	Larkin Type "R" 5 1/2" 8R - 3000 psi
BOPE	SRRA	13 5/8" - 5K Stack	1250' - TD

**BOLD ENERGY, LP**

**Bell Lake #30**

~~CONFIDENTIAL~~

**Section 5 - T24S - R34E**

**Lea County, New Mexico**

The Rotating Head will not be needed for drilling the Bell Lake Delaware wells. Therefore, the designation on the Prognosis is SRRA.

**135/8" - 5K Stack**

This stack is a  
**SRRAG**

Rotating Head as needed

WILLIAMS  
TOOL CO.

G = Rotating Head

135/8" - 5000 PSI  
Annular

A = Annular

4 1/2"  
Pipe  
Rams

R = Ram (Pipe or Blind)

Blind  
Rams

S = Spool

Check Valve

HCR

Drilling  
Spool

Remote Adjustable Choke

Adjustable choke

See  
previous  
page

**4 1/16" 5000 psi WP Double Valve Choke Manifold**