

Exhibit "A"

DISTRICT I
1625 N. French Dr., Hobbs, NM 88240

DISTRICT II
1301 W. Grand Avenue, Artesia, NM 88210

DISTRICT III
1000 Rio Brazos Rd., Aztec, NM 87410

DISTRICT IV
1220 S. St. Francis Dr., Santa Fe, NM 87505

State of New Mexico
Energy, Minerals and Natural Resources Department

Form C-102
Revised October 12, 2005

Submit to Appropriate District Office
State Lease - 4 Copies
Fee Lease - 3 Copies

OIL CONSERVATION DIVISION 1220 South St. Francis Dr. Santa Fe, New Mexico 87505

☐ AMENDED REPORT

WELL LOCATION AND ACREAGE DEDICATION PLAT

API Number 30-025-38565	Pool Code 97051	Pool Name Bell Lake Undesignated (Delaware)
Property Code 35983	Property Name BELL LAKE	Well Number 28
OGRID No. 233545	Operator Name BOLD ENERGY, LP	Elevation 3591'

Surface Location

UL or lot No.	Section	Township	Range	Lot Idn	Feet from the	North/South line	Feet from the	East/West line	County
M	5	24 S	34 E		660	SOUTH	660	WEST	LEA

Bottom Hole Location If Different From Surface

UL or lot No.	Section	Township	Range	Lot Idn	Feet from the	North/South line	Feet from the	East/West line	County
Dedicated Acres 40	Joint or Infill	Consolidation Code	Order No.						

NO ALLOWABLE WILL BE ASSIGNED TO THIS COMPLETION UNTIL ALL INTERESTS HAVE BEEN CONSOLIDATED
OR A NON-STANDARD UNIT HAS BEEN APPROVED BY THE DIVISION

<p>Lat - N32°14'28.13" Long - W103°29'54.29" (NAD-83)</p> <p>400 acres</p>	<h4>OPERATOR CERTIFICATION</h4> <p>I hereby certify that the information contained herein is true and complete to the best of my knowledge and belief, and that this organization either owns a working interest or unleased mineral interest in the land including the proposed bottom hole location pursuant to a contract with an owner of such a mineral or working interest, or to a voluntary pooling agreement or a compulsory pooling order heretofore entered by the division.</p> <p><i>Gabe Baller</i> 7/7/07 Signature Date</p> <p><i>Lee Ann Rollins</i> Printed Name</p>	
	<h4>SURVEYOR CERTIFICATION</h4> <p>I hereby certify that the well location shown on this plat was plotted from field notes of actual surveys made by me or under my supervision, and that the same is true and correct to the best of my belief.</p> <p>JULY 11, 2007 Date Surveyed</p> <p><i>GARY L. JONES</i> Signature & Seal Professional Surveyor</p> <p><i>GARY L. JONES</i> Professional Surveyor</p>	
	<p>Certificate No. Gary L. Jones 7977</p>	
	<p>BASIN SURVEYS</p>	

Drilling Prognosis

Preliminary

July 18, 2007

Operator: BOLD ENERGY, LP Field: Undesignated (Delaware)
Well: Bell Lake #28 API: 30 - 025 - Pending
Drilling Permit: BLM Approval - Pending AFE: Pending

General Information

Location: 660' FSL & 660' FWL, Section 5 - T24S - R34E Lea County, New Mexico
Elevation: 3591' GL TD: 8950' RKB: 18'
Objectives: Brushy Canyon "A" & "I" Sands 7365' - 7380' & 8465' - 8505'
Kaiser - Francis Oil Company Objective: Bone Spring LS @ 8780' - 8880'

Drilling Contractor: Nabors Drilling #142
Contractor Office: 432 / 550-7808 Supt: Don Nelson (664-9990)
Toolpushers: Roy Brumfield / Martin Alvarado Cell: 432 / 664-9942
Sierra Supervisor: Tony Vickery / Greg Fore Cell: 432 / 557-1223

Drilling Program

Hole Size	Depth	Casing	Weight	Grade	Connect	Cement	TOC
12 1/4"	1225'	8 5/8"	24	J-55	STC	675 sx	Surface
7 7/8"	8950'	5 1/2"	17	L-80	LTC	DV @ 5500' 625 sx & 700 sx	1000'

Wellhead / BOPE

Wellhead	Larkin FIG 92 SOW - 2000 psi	Larkin FIG 92 8 5/8" 8R - 3000 psi	Larkin Type "R" 5 1/2" 8R - 3000 psi
BOPE	SRRA	13 5/8" - 5K Stack	1225' 700' - TD

Mud Program

Interval	Type	MW	VIS	FL
0' - 1225'	FW - Spud	8.4 - 9.2	34 - 38	NC
1225' - 8950'	Brine w/ sweeps	10.0 - 10.2	28 - 30	NC

Company: NOVA MUD, INC. 432 / 570-6663 Office: Dale Welch / Tech Advisor 432 / 557-1228
Engineer: Rick Rippey 505 / 631-9597 Warehouse: 800 / 530-8786

Geological Data

Geologist: John Worrall **Phone:** 505 / 622-5893 office 432 / 230-9431 cell Home: 505 / 622-2768

Estimated Formation Tops: (GL =3599')

Formation	Subsea	MD	Formation	Subsea	MD
Rustler	2409'	1190'	Brushy Canyon "A"	-3766'	7365' - 7380'
Salt			Brushy Canyon "I"	-4866	8465' - 8505'
Anhydrite					
Salt					
Delaware	-1521'	5120'	Bone Spring LS	-5181	8780'
Cherry Canyon	-2451'	6050'	Bone Spring LS, Base	-5281'	8880'
Bs Manzanita			TD	-5351'	8950'

Evaluation Program

Mud Logs: 5100' to TD **Mud Logger:** WOODCO Logging / Paul Amancio

Phone: Jim Wood 505 / 887-2469 office 505 / 361-3059 cell

DST / Coring Intervals: None Anticipated

E-Log Suite: Triple Combo TD – 5000'. Pull GR - N to surface. Potential 20 SWC No RFT's

Logging Company: Halliburton

Contact: Richard Kelley

Location: Hobbs, New Mexico

Phone: 505 / 914-0324 cell 505 / 392-0776 office

Completion

Completion is expected to be a single, rod-pumped Delaware oil well. Intervals within objective zone will be selectively perforated, fraced down 5½" casing and placed on rod pump. (Note: to be cased through Bone Springs to accommodate future completion by Kaiser-Francis Oil Company.)

Emergency Contacts / Notifications

Sierra Engineering	Drilling Superintendent	Russ Ginanni	432 / 425-7450 cell 432 / 683-8000 off
Sierra Engineering	HSE Manager	Montie Low	432 / 559-8950 cell 432 / 683-8000 off
Bold Energy, LP	President	Joe Castillo	432 / 230-0202 cell 432 / 686-1100 off
Bold Energy, LP	Operations Manager	Shannon Klier	432 / 296-8602 cell 432 / 686-1100 off
BLM	Hobbs Field Station	Notifications Engineering	505 / 393-3612 505 / 706-2779

Directions

From the intersection of CR 21 and State Highway 128 (1) go north on CR 21 for 3.0 miles to Shell Road; (2) turn right (east) onto Shell Road for 0.9 mile to lease road; (3) turn right and follow road south – southwest for approx 0.4 mile to old well pad (Bell Lake #25) and follow lease road to south – southwest for approx 0.4 mile to newly constructed road into location.

Drilling Prognosis

July 7, 2007

Operator: BOLD ENERGY, LP
Well: Bell Lake Unit #28

Additional Information

Casing-minimum safety factors for burst/collapse/tension:

1.0 for burst, 1.3 for collapse, 2.0 for tensile

Indicate whether casing is new or used: All casing will be new

BOP kill line size: 2"

BOP frequency of testing while drilling:

Pressure tested per Onshore Order #2 when installed, function tested daily

Proposed trajectory, plan view, vertical view

Vertical wellbores, no directional drilling is planned

BOLD ENERGY, LP

Bell Lake #28

660' FSL & 660' FWL

Section 5 - T24S - R34E

Lea County, New Mexico

Cementing Program

Note: cement types, volumes and slurry designs may change based on hole conditions (lost circulation, washout severity, pay zone depths, etc.).

8 5/8" Surface Casing @ 1225':

Cement with 400 sx 35:65 POZ - Class "C" w/ 2% CaCl_2 , 6% gel and ¼ PPS of cello-flake (12.8 ppg, 1.83 yield) followed by 200 sx Class "C" containing 2% CaCl_2 and ¼ PPS of cello flake (14.8 ppg, 1.34 yield). Excess cement volume = 100%.

If lost circulation occurs during drilling of surface hole the program may be revised to increase volumes, increase the amount of LCM used and / or add a lead slurry of "thixotropic" cement.

5 1/2" Production Casing:

Note: cement volumes are based on the DV Tool being placed @ 5000', however, the tool depth may be adjusted based on drilling results and open hole logs in order to optimize cementing results.

Stage 1

Cement with 200 sx 50:50 POZ : Class "H" cont'g 5% salt, 10% gel & 0.3% FL52-A (11.8 ppg, 2.45 yield) followed by 450 sx of 50:50 POZ - Class "H" cont'g 5% salt, 2% gel, 0.2% sodium metasilicate & 0.5% FL-25A (14.2 ppg, 1.30 yield). Excess cement volume = 50%.

Stage 2

Cement w/ 450 sx Class 50:50 POZ - Class "C" cont'g 5% salt, 10% gel, 5 PPS LCM-1 & ¼ pps cello-flake (11.8 ppg, 2.45 yield) followed by 100 sx Class "C" (14.8 ppg, 1.33 yield).

Excess cement volume = 50% with a planned overall TOC @ 1000' and the expectation that cement will be circulated to the DV Tool on Stage #1 and to the surface on Stage #2. The volumes will be adjusted based on an open hole caliper log.

Drilling Prognosis

August 15, 2007

Operator: BOLD ENERGY, LP

Well: Bell Lake Unit #28

Additional Information

Geological Information

The only oil-bearing formations will be from 7000 to 8800 in the Delaware Mountain Group Brushy Canyon formation. All of the Bell Canyon and Cherry Canyon sandstones contain salt brine formation water. The only fresh water expected is between surface and the depth of surface casing.

Anticipated BHP:

Brushy Canyon "A": 3,050 psi

Brushy Canyon "I": 3,500 psi

Bone Spring: 3,650 psi

Wellhead / BOPE

Wellhead	Larkin FIG 92 SOW - 2000 psi	Larkin FIG 92 8 5/8" 8R - 3000 psi	Larkin Type "R" 5 1/2" 8R - 3000 psi
BOPE	SRRA	13 5/8" - 5K Stack	1250' - TD

BOLD ENERGY, LP

Bell Lake Nos. 27, 28, 29, 30

Lea County, New Mexico

135/8" - 5K Stack

Rotating Head
as needed

WILLIAMS
TOOL CO

135/8" - 5000 PSI
Annular

4 1/2"
Pipe
Rams

Blind
Rams

Drilling
Spool

HCR

To Pumps = 2" Line

Check Valve

4 1/16" - 5000 psi WP

Double Valve Choke Manifold

All Valves & Lines are 4 1/16" unless labeled otherwise

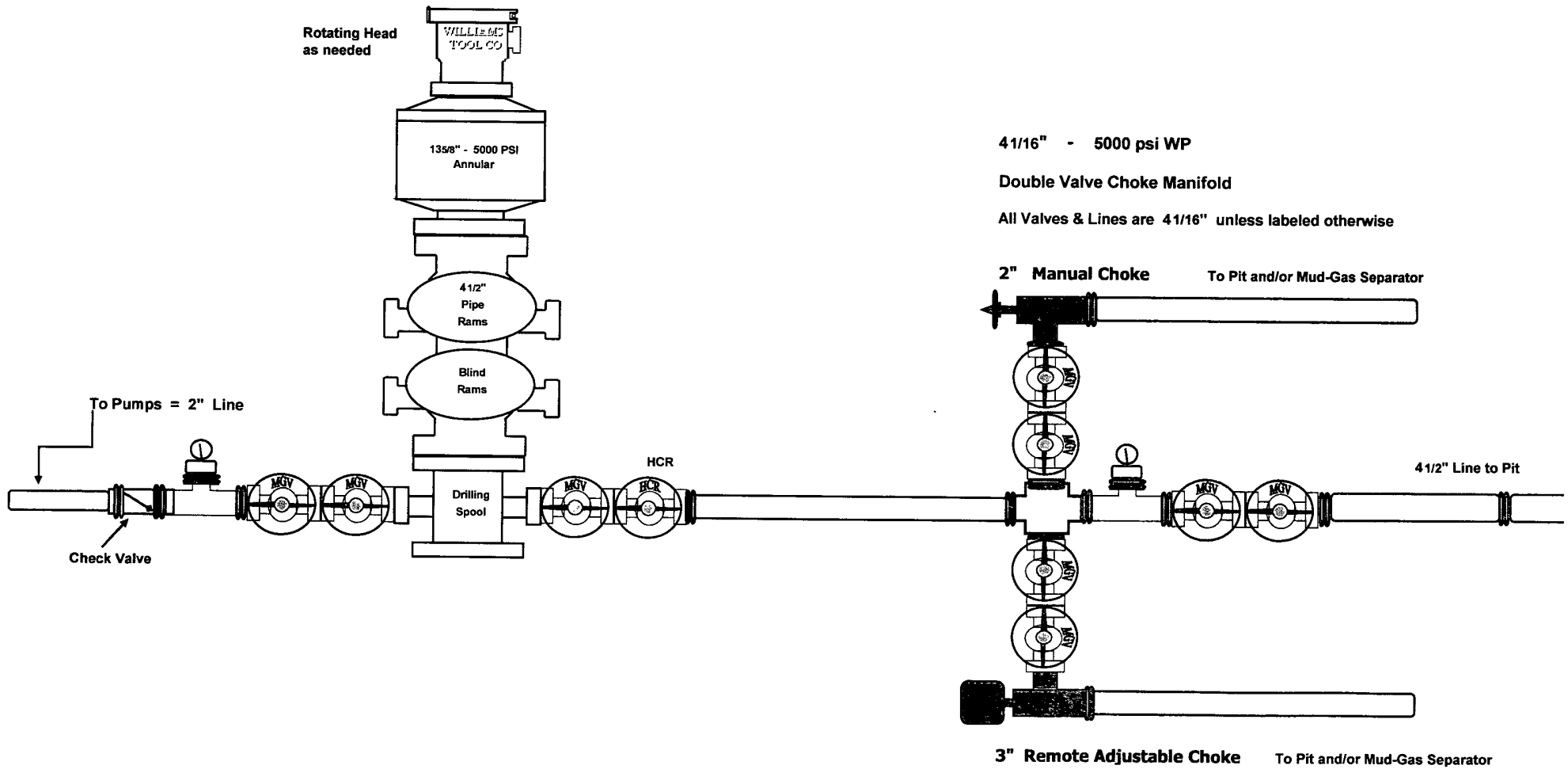
2" Manual Choke

To Pit and/or Mud-Gas Separator

4 1/2" Line to Pit

3" Remote Adjustable Choke

To Pit and/or Mud-Gas Separator



BOLD ENERGY, LP

Bell Lake #28

660' FSL & 660' FWL

Section 5 - T24S - R34E

Lea County, New Mexico

The Rotating Head will not be needed for drilling the Bell Lake Delaware wells. Therefore, the designation on the Prognosis is SRRA.

135/8" - 5K Stack

This stack is a SRRAG

Rotating Head as needed

WILLIAMS
TOOL CO.

G = Rotating Head

135/8" - 5000 PSI
Annular

A = Annular

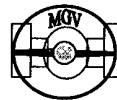
4 1/2"
Pipe
Rams

R = Ram (Pipe or Blind)

Blind
Rams

S = Spool

Check Valve

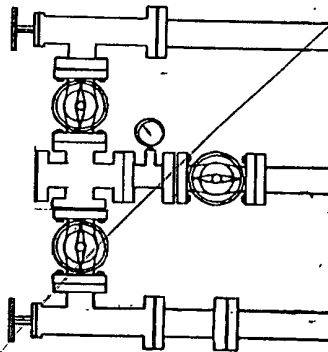


Drilling
Spool

HCR



Remote Adjustable Choke

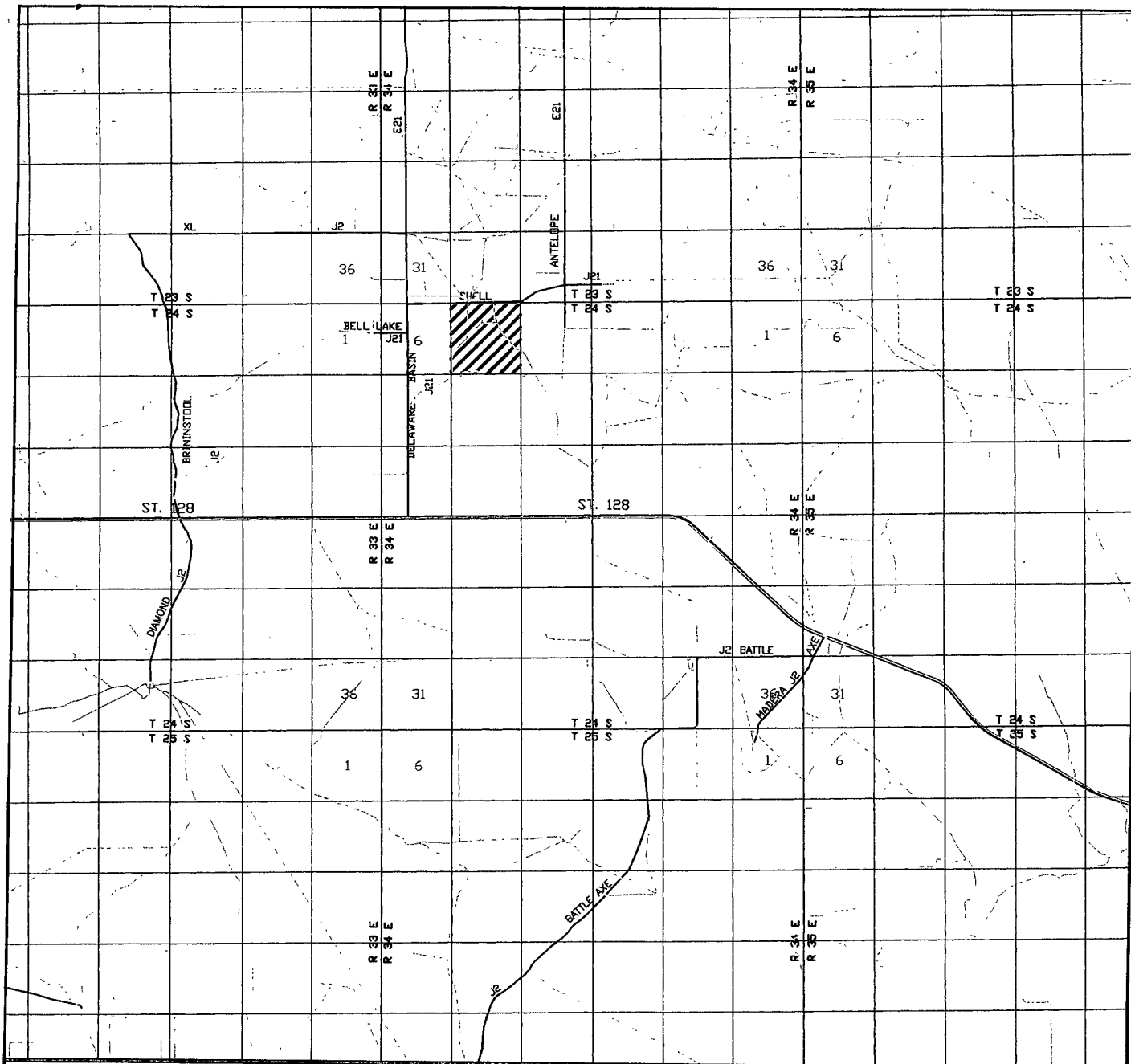


Adjustable choke

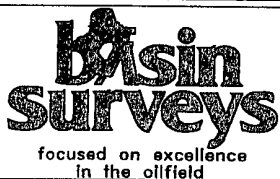
4 1/16" 5000 psi WP Double Valve Choke Manifold

See BOP Manifold sketch

Exhibit "C"



BELL LAKE #28
 Located at 660' FSL AND 660' FWL
 Section 5, Township 24 South, Range 34 East,
 N.M.P.M., Lea County, New Mexico.



P.O. Box 1786
 1120 N. West County Rd.
 Hobbs, New Mexico 88241
 (505) 393-7316 - Office
 (505) 392-3074 - Fax
 basinsurveys.com

W.O. Number: JMS 18275TR

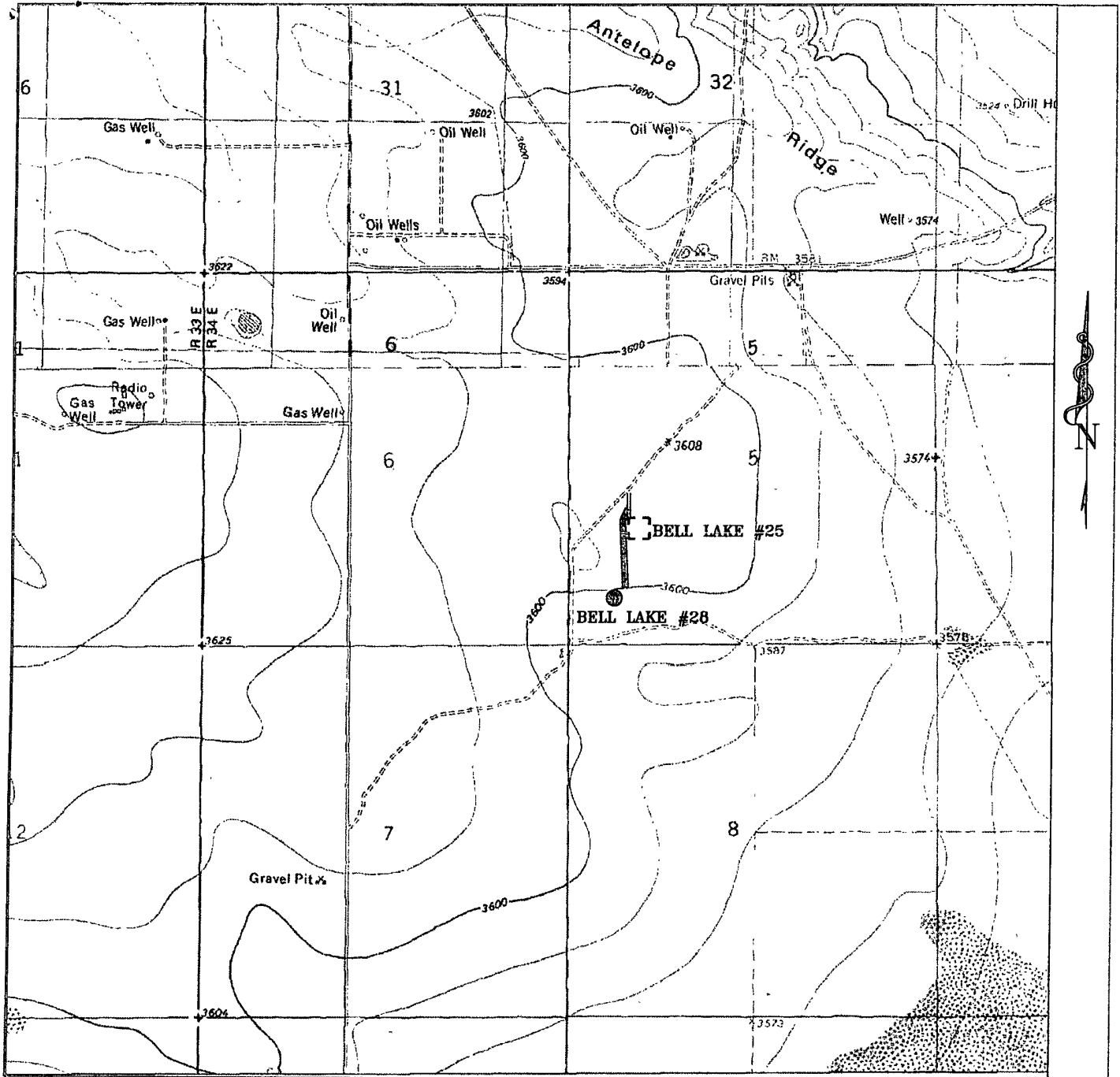
Survey Date: 07-11-2007

Scale: 1" = 2 MILES

Date: 07-12-2007

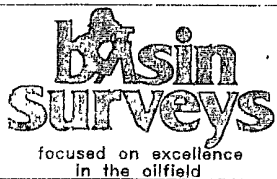
**BOLD ENERGY,
 L.P.**

Exhibit "D"



BELL LAKE #28

Located at 660' FSL AND 660' FWL
 Section 5, Township 24 South, Range 34 East,
 N.M.P.M., Lea County, New Mexico.



P.O. Box 1786
 1120 N. West County Rd.
 Hobbs, New Mexico 88241
 (505) 393-7316 - Office
 (505) 392-3074 - Fax
 basinsurveys.com

W.O. Number: 18275T

Survey Date: 07-11-2007

Scale: 1" = 2000'

Date: 07-12-2007

**BOLD ENERGY
 L.P.**