

# Exhibit "A"

DISTRICT I  
1625 N. French Dr., Hobbs, NM 88240

DISTRICT II  
1301 W. Grand Avenue, Artesia, NM 88210

DISTRICT III  
1000 Rio Brazos Rd., Aztec, NM 87410

DISTRICT IV  
1220 S. St. Francis Dr., Santa Fe, NM 87505

State of New Mexico  
Energy, Minerals and Natural Resources Department

Form C-102  
Revised October 12, 2005

Submit to Appropriate District Office  
State Lease - 4 Copies  
Fee Lease - 3 Copies

## OIL CONSERVATION DIVISION 1220 South St. Francis Dr. Santa Fe, New Mexico 87505

☐ AMENDED REPORT

### WELL LOCATION AND ACREAGE DEDICATION PLAT

API Number <b>30-025-38566</b>	Pool Code <b>97051</b>	Pool Name <b>Ben Lake</b> <del>Undesignated (Delaware)</del> <b>South</b>
Property Code <b>35983</b>	Property Name <b>BELL LAKE</b>	Well Number <b>29</b>
GRID No. <b>233545</b>	Operator Name <b>BOLD ENERGY, LP</b>	Elevation <b>3595'</b>

#### Surface Location

UL or lot No.	Section	Township	Range	Lot Idn	Feet from the	North/South line	Feet from the	East/West line	County
K	5	24 S	34 E		2310	SOUTH	1980	WEST	LEA

#### Bottom Hole Location If Different From Surface

UL or lot No.	Section	Township	Range	Lot Idn	Feet from the	North/South line	Feet from the	East/West line	County
Dedicated Acres <b>40</b>	Joint or Infill	Consolidation Code	Order No.						

NO ALLOWABLE WILL BE ASSIGNED TO THIS COMPLETION UNTIL ALL INTERESTS HAVE BEEN CONSOLIDATED  
OR A NON-STANDARD UNIT HAS BEEN APPROVED BY THE DIVISION

	<b>OPERATOR CERTIFICATION</b> I hereby certify that the information contained herein is true and complete to the best of my knowledge and belief, and that this organization either owns a working interest or unless mineral interest in the land including the proposed bottom hole location pursuant to a contract with an owner of such a mineral or working interest, or to a voluntary pooling agreement or a compulsory pooling order heretofore entered by the division. Signature: <i>Lee Ann Rollins</i> Date: <i>7/17/07</i> Printed Name: <b>Lee Ann Rollins</b>
	<b>SURVEYOR CERTIFICATION</b> I hereby certify that the well location shown on this plat was plotted from field notes of actual surveys made by me or under my supervision, and that the same is true and correct to the best of my belief. Date Surveyed: <b>JULY 17, 2007</b> Signature & Seal: <i>W. Gary L. Jones</i> Professional Surveyor Certificate No. <b>W. Gary L. Jones 7977</b>
	<b>BASIN SURVEYS</b>

# Drilling Prognosis

**Preliminary**

**August 12, 2007**

**Operator:** BOLD ENERGY, LP **Field:** Undesignated (Delaware)  
**Well:** Bell Lake #29 **API:** 30 - 025 - Pending  
**Drilling Permit:** BLM Approval - Pending **AFE:** Pending

## General Information

**Location:** 2310' FSL & 1980' FWL, Section 5 - T24S - R34E Lea County, New Mexico  
**Elevation:** 3595' GL **TD:** 8980' **RKB:** 18'  
**Objectives:** Brushy Canyon "A" & "I" Sands 7395' - 7410' & 8495' - 8535'  
Kaiser - Francis Oil Company Objective: Bone Spring LS @ 8810' - 8910'

**Drilling Contractor:** Nabors Drilling #142  
**Contractor Office:** 432 / 550-7808 **Supt:** Don Nelson (664-9990)  
**Toolpushers:** Roy Brumfield / Martin Alvarado **Cell:** 432 / 664-9942  
**Sierra Supervisor:** Tony Vickery / Greg Fore **Cell:** 432 / 557-1223

## Drilling Program

Hole Size	Depth	Casing	Weight	Grade	Connect	Cement	TOC
12¼"	1250'	8 5/8"	24	J-55	STC	675 sx	Surface
7 7/8"	8980'	5½"	17	L-80	LTC	DV @ 5500' 625 sx & 700 sx	1000'

## Wellhead / BOPE

Wellhead	Larkin FIG 92 SOW - 2000 psi	Larkin FIG 92 8 5/8" 8R - 3000 psi	Larkin Type "R" 5½" 8R - 3000 psi
BOPE	SRRA	13 5/8" - 5K Stack	1250' - TD

## Mud Program

Interval	Type	MW	VIS	FL
0' - 1250'	FW - Spud	8.4 - 9.2	34 - 38	NC
1250' - 8950'	Brine w/ sweeps	10.0 - 10.2	28 - 30	NC

**Company:** NOVA MUD, INC. 432 / 570-6663 **Office:** Dale Welch / Tech Advisor 432 / 557-1228  
**Engineer:** Rick Rippy 505 / 631-9597 **Warehouse:** 800 / 530-8786

**Geological Data**

**Geologist:** John Worrall    **Phone:** 505 / 622-5893 office    432 / 230-9431 cell    Home: 505 / 622-2768

**Estimated Formation Tops: (GL =3599')**

Formation	Subsea	MD	Formation	Subsea	MD
Rustler	2439'	1220'	Brushy Canyon "A"	-3796'	7395' - 7410'
Salt			Brushy Canyon "I"	-4896'	8495' - 8535'
Anhydrite					
Salt					
Delaware	-1551'	5150'	Bone Spring LS	-5211'	8810'
Cherry Canyon	-2481'	6080'	Bone Spring LS, Base	-5311'	8910'
Bs Manzanita			TD	-5381'	8980'

**Evaluation Program**

**Mud Logs:** 5100' to TD    **Mud Logger:** WOODCO Logging / Paul Amancio

**Phone:** Jim Wood 505 / 887-2469 office    505 / 361-3059 cell

**DST / Coring Intervals:** None Anticipated

**E-Log Suite:** Triple Combo TD – 5000'. Pull GR - N to surface. Potential 20 SWC    No RFT's

**Logging Company:** Halliburton    **Contact:** Richard Kelley

**Location:** Hobbs, New Mexico    **Phone:** 505 / 914-0324 cell    505 / 392-0776 office

**Completion**

Completion is expected to be a single, rod-pumped Delaware oil well. Intervals within objective zone will be selectively perforated, fraced down 5½" casing and placed on rod pump. (Note: to be cased through Bone Springs to accommodate future completion by Kaiser-Francis Oil Company.)

**Emergency Contacts / Notifications**

Sierra Engineering	Drilling Superintendent	Russ Ginanni	432 / 425-7450 cell 432 / 683-8000 off
Sierra Engineering	HSE Manager	Montie Low	432 / 559-8950 cell 432 / 683-8000 off
Bold Energy, LP	President	Joe Castillo	432 / 230-0202 cell 432 / 686-1100 off
Bold Energy, LP	Operations Manager	Shannon Klier	432 / 296-8602 cell 432 / 686-1100 off
BLM	Hobbs Field Station	Notifications Engineering	505 / 393-3612 505 / 706-2779

**Directions**

From the intersection of CR 21 and State Highway 128 **(1)** go north on CR 21 for 3.0 miles to Shell Road; **(2)** turn right (east) onto Shell Road for 0.9 mile to lease road; **(3)** turn right and follow road south for 0.2 mile to new lease road on left **(4)** turn left and follow this road into location.

# Drilling Prognosis

July 7, 2007

Operator: BOLD ENERGY, LP  
Well: Bell Lake Unit #29

## Additional Information

Casing-minimum safety factors for burst/collapse/tension:  
1.0 for burst, 1.3 for collapse, 2.0 for tensile

Indicate whether casing is new or used: All casing will be new

BOP kill line size: 2"

BOP frequency of testing while drilling:  
Pressure tested per Onshore Order #2 when installed, function tested daily

Proposed trajectory, plan view, vertical view  
Vertical wellbores, no directional drilling is planned

# Drilling Prognosis

August 15, 2007

Operator: BOLD ENERGY, LP

Well: Bell Lake Unit #29

## Additional Information

### Geological Information

The only oil-bearing formations will be from 7000 to 8800 in the Delaware Mountain Group Brushy Canyon formation. All of the Bell Canyon and Cherry Canyon sandstones contain salt brine formation water. The only fresh water expected is between surface and the depth of surface casing.

#### Anticipated BHP:

Brushy Canyon "A": 3,050 psi

Brushy Canyon "I": 3,500 psi

Bone Spring: 3,650 psi

# **BOLD ENERGY, LP**

**Bell Lake #29**

**2310' FSL & 1980' FWL**

**Section 5 - T24S - R34E**

**Lea County, New Mexico**

## **Cementing Program**

---

**Note: cement types, volumes and slurry designs may change based on hole conditions (lost circulation, washout severity, pay zone depths, etc.).**

### **8 5/8" Surface Casing @ 1250':**

Cement with 400 sx 35:65 POZ - Class "C" w/ 2%  $\text{CaCl}_2$ , 6% gel and  $\frac{1}{4}$  PPS of cello-flake (12.8 ppg, 1.83 yield) followed by 200 sx Class "C" containing 2%  $\text{CaCl}_2$  and  $\frac{1}{4}$  PPS of cello flake (14.8 ppg, 1.34 yield). Excess cement volume = 100%.

If lost circulation occurs during drilling of surface hole the program may be revised to increase volumes, increase the amount of LCM used and / or add a lead slurry of "thixotropic" cement.

### **5 1/2" Production Casing:**

Note: cement volumes are based on the DV Tool being placed @ 5000', however, the tool depth may be adjusted based on drilling results and open hole logs in order to optimize cementing results.

#### **Stage 1**

---

Cement with 200 sx 50:50 POZ : Class "H" cont'g 5% salt, 10% gel & 0.3% FL52-A (11.8 ppg, 2.45 yield) followed by 450 sx of 50:50 POZ - Class "H" cont'g 5% salt, 2% gel, 0.2% sodium metasilicate & 0.5% FL-25A (14.2 ppg, 1.30 yield). Excess cement volume = 50%.

#### **Stage 2**

---

Cement w/ 450 sx Class 50:50 POZ - Class "C" cont'g 5% salt, 10% gel, 5 PPS LCM-1 &  $\frac{1}{4}$  pps cello-flake (11.8 ppg, 2.45 yield) followed by 100 sx Class "C" (14.8 ppg, 1.33 yield).

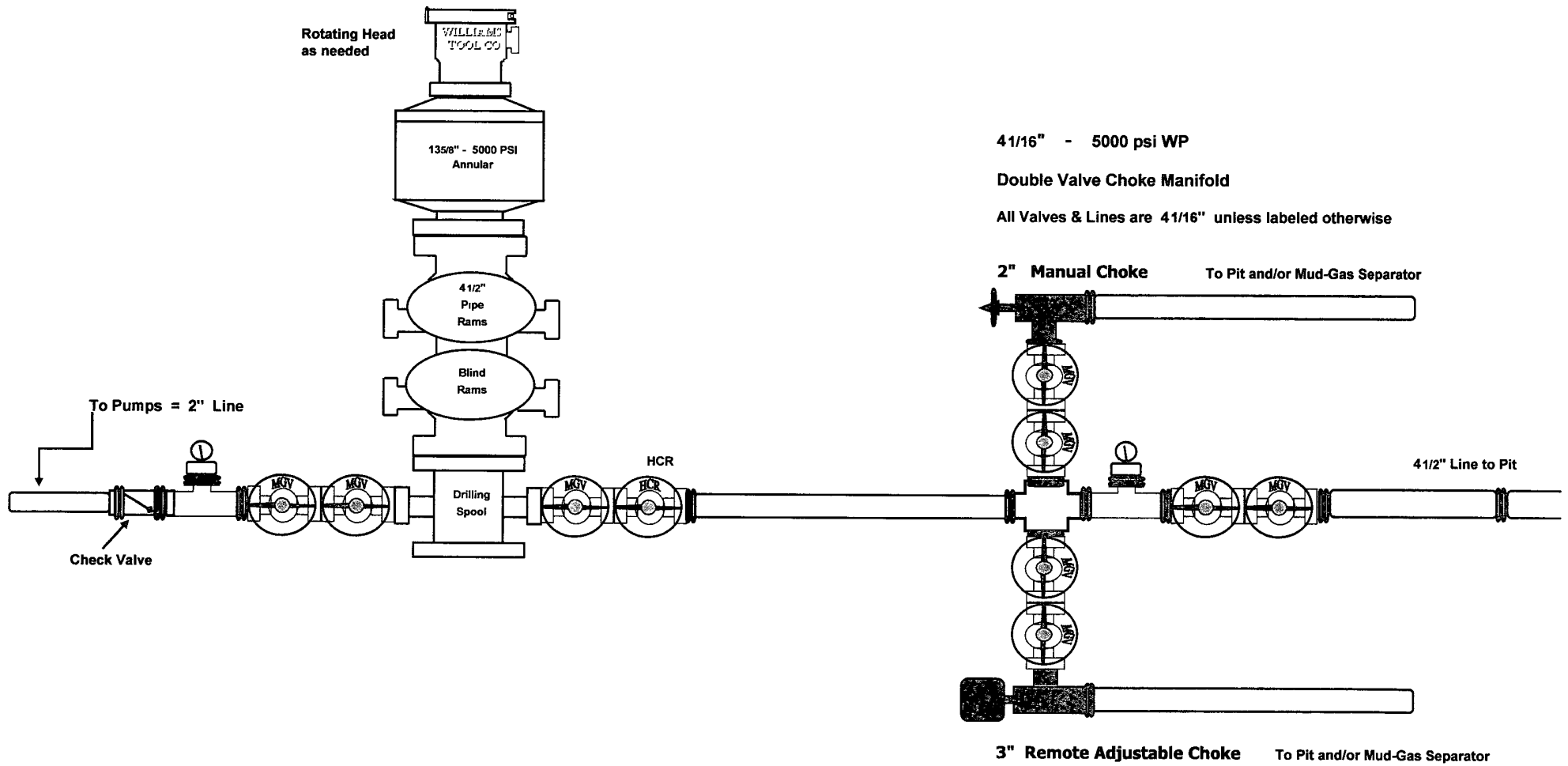
Excess cement volume = 50% with a planned overall TOC @ 1000' and the expectation that cement will be circulated to the DV Tool on Stage #1 and to the surface on Stage #2. The volumes will be adjusted based on an open hole caliper log.

**BOLD ENERGY, LP**

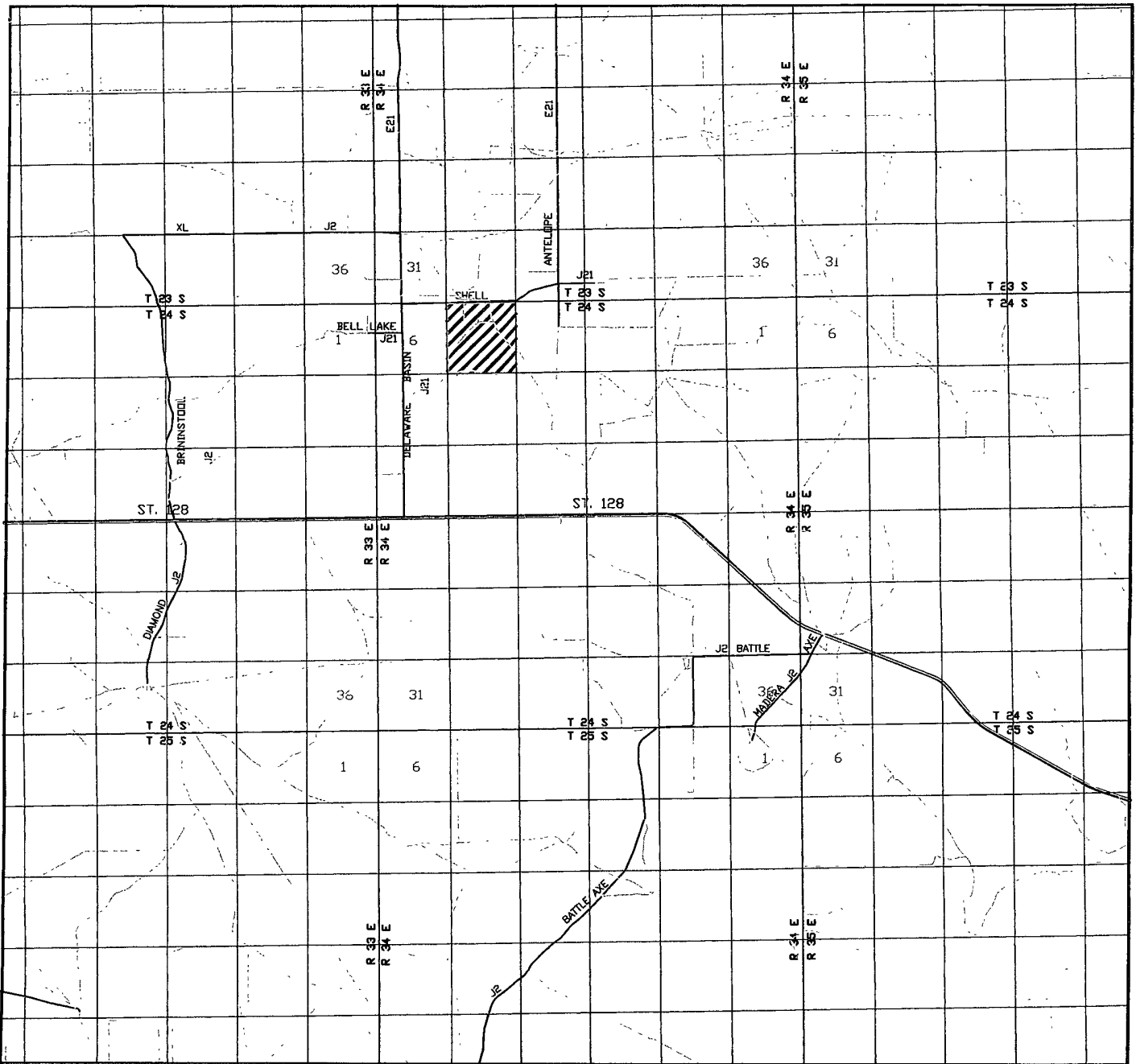
Bell Lake Nos. 27, 28, 29, 30

Lea County, New Mexico

**135/8" - 5K Stack**



# Exhibit "C"



## BELL LAKE #29

Located at 2310' FSL AND 1980' FWL  
Section 5, Township 24 South, Range 34 East,  
N.M.P.M., Lea County, New Mexico.



P.O. Box 1786  
1120 N. West County Rd.  
Hobbs, New Mexico 88241  
(505) 393-7316 - Office  
(505) 392-3074 - Fax  
basinsurveys.com

W.O. Number: JMS 18276TR

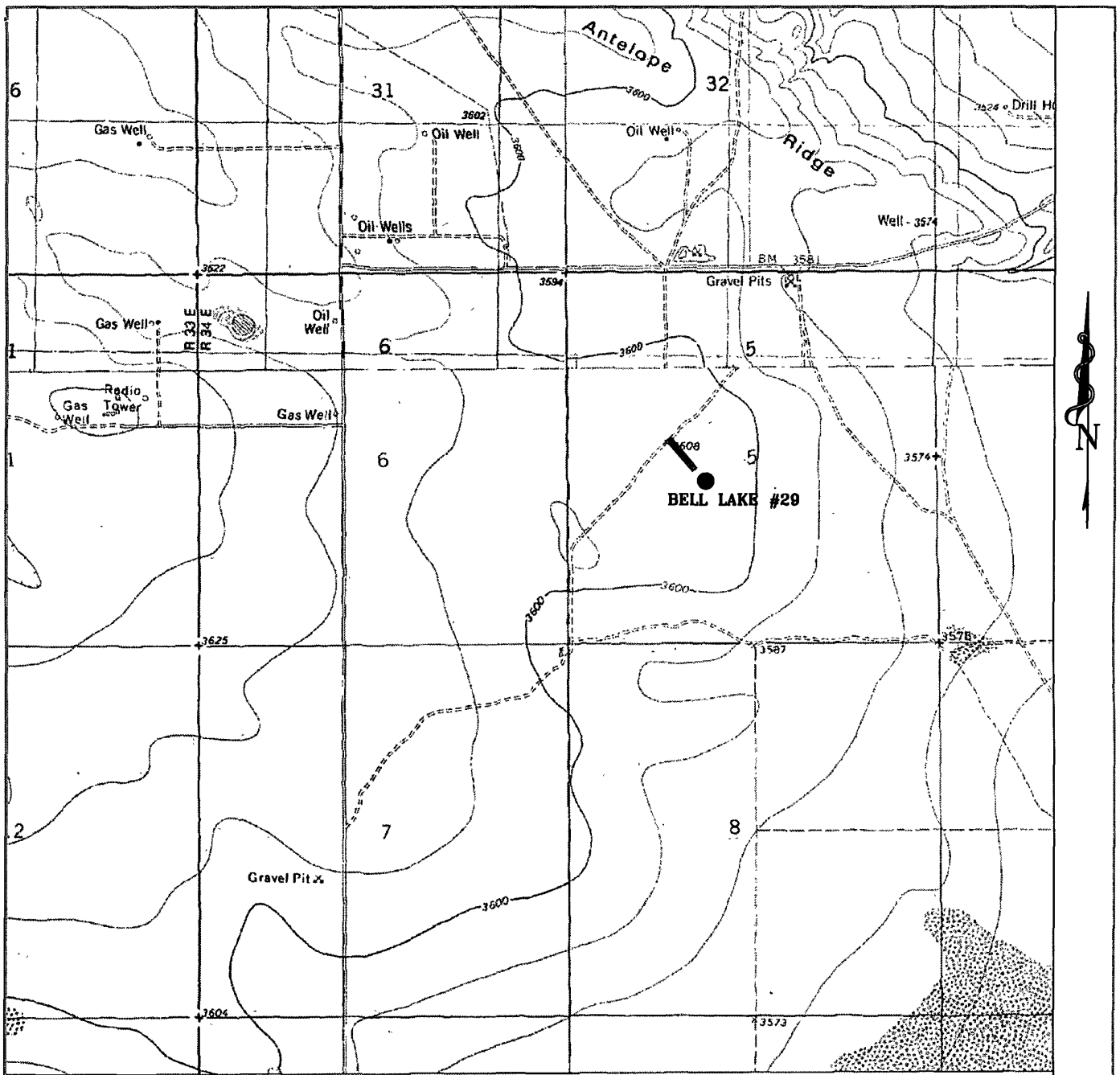
Survey Date: 07-11-2007

Scale: 1" = 2 MILES

Date: 07-12-2007

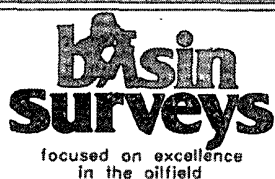
**BOLD ENERGY,  
L.P.**





### BELL LAKE #29

Located at 2310' FSL AND 1980' FWL  
 Section 5, Township 24 South, Range 34 East,  
 N.M.P.M., Lea County, New Mexico.



P.O. Box 1786  
 1120 N. West County Rd.  
 Hobbs, New Mexico 88241  
 (505) 393-7316 - Office  
 (505) 392-3074 - Fax  
[basinsurveys.com](http://basinsurveys.com)

W.O. Number: 18276T

Survey Date: 07-11-2007

Scale: 1" = 2000'

Date: 07-12-2007

**BOLD ENERGY  
 L.P.**