

District I  
1625 N. French Dr., Hobbs, NM 88240  
District II  
1301 W. Grand Avenue, Artesia, NM 88210  
District III  
1000 Rio Brazos Road, Aztec, NM 87410  
District IV  
1220 S. St. Francis Dr., Santa Fe, NM 87505

State of New Mexico  
Energy Minerals and Natural Resources

Form C-101  
May 27, 2004

Oil Conservation Division  
1220 South St. Francis Dr.  
Santa Fe, NM 87505

Submit to appropriate District Office

☐ AMENDED REPORT

**APPLICATION FOR PERMIT TO DRILL, RE-ENTER, DEEPEN, PLUGBACK, OR ADD A ZONE**

<sup>1</sup> Operator Name and Address Lone Star Oil & Gas Inc. PO Box 2735 Midland, TX 79702		<sup>2</sup> OGRID Number 161485
		<sup>3</sup> API Number 30 - 025 - 38571
<sup>4</sup> Property Code 36754	<sup>5</sup> Property Name Pevchouse 8	<sup>6</sup> Well No 1
<sup>9</sup> Proposed Pool 1 Wildcat Devonian		<sup>10</sup> Proposed Pool 2

**<sup>7</sup> Surface Location**

UL or lot no.	Section	Township	Range	Lot Idn	Feet from the	North/South line	Feet from the	East/West line	County
P	8	24S	36E		660'	S	900'	E	Lea

**<sup>8</sup> Proposed Bottom Hole Location If Different From Surface**

UL or lot no	Section	Township	Range	Lot Idn	Feet from the	North/South line	Feet from the	East/West line	County

**Additional Well Information**

<sup>11</sup> Work Type Code N	<sup>12</sup> Well Type Code O	<sup>13</sup> Cable/Rotary R	<sup>14</sup> Lease Type Code P	<sup>15</sup> Ground Level Elevation 3386
<sup>16</sup> Multiple N	<sup>17</sup> Proposed Depth 14,000	<sup>18</sup> Formation Devonian	<sup>19</sup> Contractor TBD	<sup>20</sup> Spud Date 10-25-2007
Depth to Groundwater +100' 2158'		Distance from nearest fresh water well 2.9		Distance from nearest surface water
<b>Pit</b> Liner: Synthetic <input checked="" type="checkbox"/> 12_mils thick Clay <input type="checkbox"/> Pit Volume: 10,000_bbls Drilling Method: Closed-Loop System <input type="checkbox"/> Fresh Water <input checked="" type="checkbox"/> Brine <input checked="" type="checkbox"/> Diesel/Oil-based <input type="checkbox"/> Gas/Air <input type="checkbox"/>				

**<sup>21</sup> Proposed Casing and Cement Program**

Hole Size	Casing Size	Casing weight/foot	Setting Depth	Sacks of Cement	Estimated TOC
17 1/2"	13 3/8"	48	550'	750	Surface
12 1/4"	9 5/8"	40	5600'	2000	Surface
8 3/4"	7"	26	10,500'	850	5000'
6 1/8"	4 1/2"	13.5	10,000' - 14,000'	500	10,000'

<sup>22</sup> Describe the proposed program. If this application is to DEEPEN or PLUG BACK, give the data on the present productive zone and proposed new productive zone. Describe the blowout prevention program, if any. Use additional sheets if necessary.

Lone Star respectfully requests approval to drill the Joe Pevchouse 8#1 well according to the following:

1. Drill 17-1/2" hole to 550'. Run and set 550' of 13- 3/8" 48#, csg & cmt w/750 sxs. Circ cement to surface
2. Drill 12-1/4" hole to 5600'. Run and set 5600' of 9- 5/8", 40# csg and cmt w/2000 sxs. Circ cement to surface.
3. Drill 8-3/4" hole to 10,500'. Run and set 10,500' of 7", 26#, csg and cmt w/ 850 sxs. TOC @ 5000'
- 4/ Drill 6-1/8" hole to 10,000'. Run and set 14,000' of 4 1/2", 13.5# csg & cmt w/500 sxs. TOC @ 10,000.

Permit Expires 1 Year From Approval  
Date Unless Drilling Underway

<sup>23</sup> I hereby certify that the information given above is true and complete to the best of my knowledge and belief. I further certify that the drilling pit will be constructed according to NMOCD guidelines X, a general permit ☐, or an (attached) alternative OCD-approved plan ☐.

Signature:

Printed name:

Title: Agent for Lone Star Oil & Gas, Inc.

E-mail Address: leam@graysurface.com

Date: 9/24/07

Phone: 432-685-9158

**OIL CONSERVATION DIVISION**

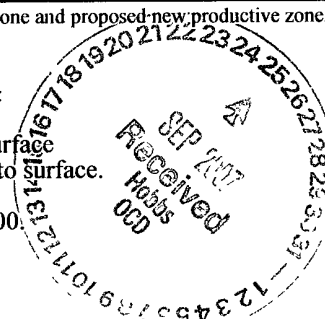
Approved by:

Title: DISTRICT SUPERVISOR/GENERAL MANAGER

Approval Date: SEP 26 2007

Expiration Date:

Conditions of Approval Attached ☐



## EXHIBIT "A"

**DISTRICT I**

1625 N. French Dr., Hobbs, NM 88240

State of New Mexico

Form C-102

**DISTRICT II**

1301 W. Grand Avenue, Artesia, NM 88210

Energy, Minerals, and Natural Resources Department

Revised August 15, 2000

Submit to Appropriate District Office

State Lease - 4 copies

Fee Lease - 3 copies

**DISTRICT III**

1000 Rio Brazos Rd., Aztec, NM 87410

1220 South St. Francis Dr.

Santa Fe, New Mexico 87505

**DISTRICT IV**

1220 S. St. Francis Dr., Santa Fe, NM 87505

☐ AMENDED REPORT**WELL LOCATION AND ACREAGE DEDICATION PLAT**

<sup>1</sup> API Number 30-025-38571	<sup>2</sup> Pool Code ✓	<sup>3</sup> Pool Name Wildcat Devonian
<sup>4</sup> Property Code 36754	<sup>5</sup> Property Name PEVEHOUSE 8	<sup>6</sup> Well Number 1
<sup>7</sup> OGRID No. 161485	<sup>8</sup> Operator Name LONE STAR OIL & GAS, INC.	<sup>9</sup> Elevation 3386'

<sup>10</sup> Surface Location

UL or lot no.	Section	Township	Range	Lot Idn	Feet from the	North/South line	Feet from the	East/West line	County
P	8	24 SOUTH	36 EAST, N.M.P.M.		660'	SOUTH	900'	EAST	LEA

<sup>11</sup> Bottom Hole Location If Different From Surface

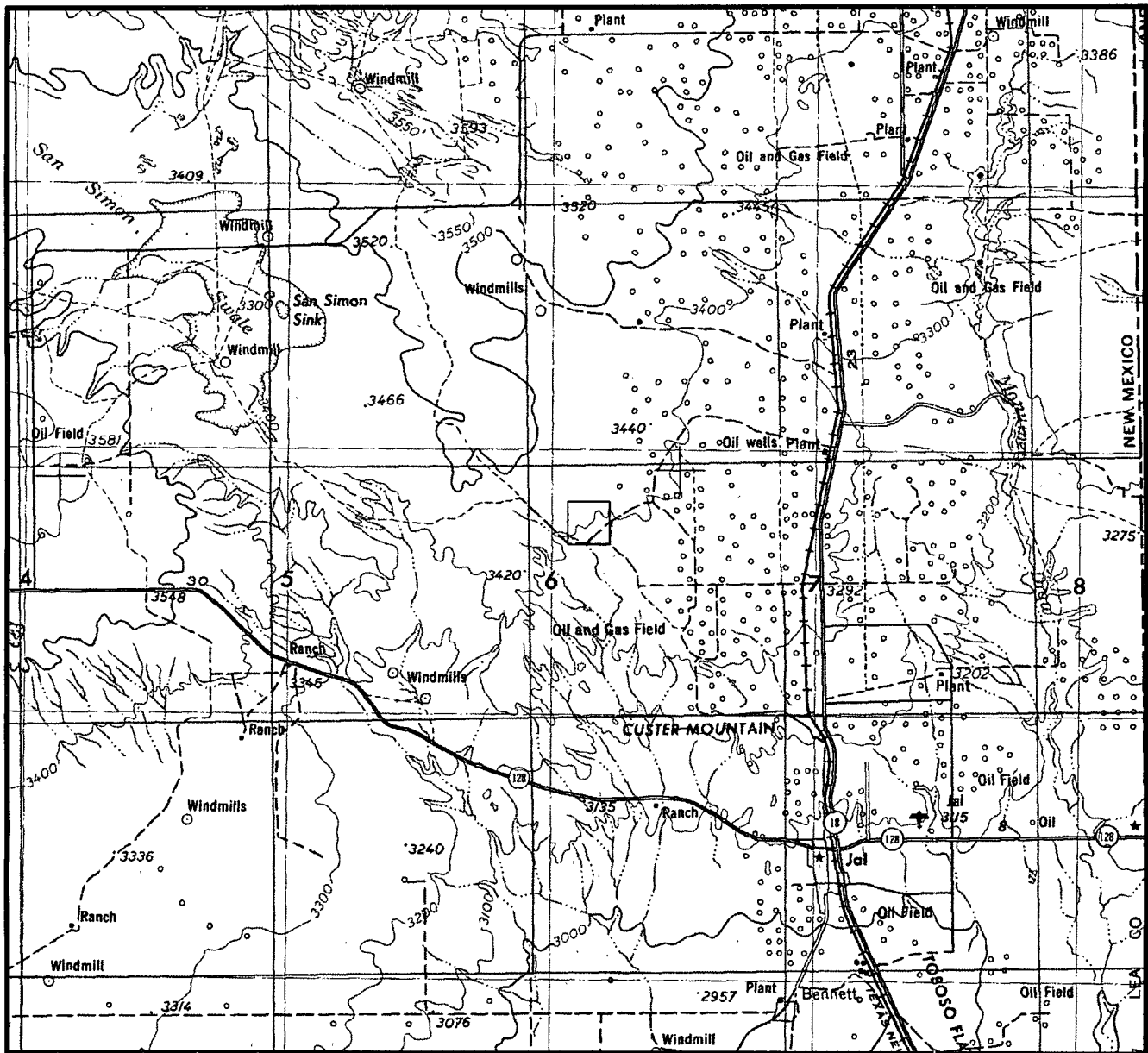
UL or lot no.	Section	Township	Range	Lot Idn	Feet from the	North/South line	Feet from the	East/West line	County

<sup>12</sup> Dedicated Acres AD	<sup>13</sup> Joint or Infill	<sup>14</sup> Consolidation Code	<sup>15</sup> Order No.
-------------------------------------	-------------------------------	----------------------------------	-------------------------

NO ALLOWABLE WELL BE ASSIGNED TO THIS COMPLETION UNTIL ALL INTERESTS HAVE BEEN CONSOLIDATED OR A NON-STANDARD UNIT HAS BEEN APPROVED BY THE DIVISION

<sup>16</sup>	<b><sup>17</sup> OPERATOR CERTIFICATION</b> I hereby certify that the information contained herein is true and complete to the best of my knowledge and belief.  Signature Lee Ann Rollins Printed Name Agent for Lone Star Oil & Gas, Inc. Title 9/24/07 Date
	<b><sup>18</sup> SURVEYOR CERTIFICATION</b> I hereby certify that the well location shown on this plat was plotted from field notes of actual surveys made by me or under my supervision, and that the same is true and correct to the best of my belief.  Date of Survey Signature and Seal of Professional Surveyor  Certificate Number V. L. BEZNER R.P.S. #7920 JOB # 109956 / 21 NE / J.W.W.

## VICINITY MAP



SECTION 8 TWP 25-S RGE 34-E  
 SURVEY NEW MEXICO PRINCIPAL MERIDIAN  
 COUNTY LEA STATE NM  
 DESCRIPTION 660' FSL & 900' FEL

OPERATOR LONE STAR OIL & GAS, INC.  
 LEASE PEVEHOUSE 8 #1

DISTANCE & DIRECTION FROM JCT. OF S.H. 18 & S.H. 218  
@ JAL, GO NORTH ON HWY. 18 6.1 MILES, THENCE WEST  
ON CO. RD. J7 3.0 MILES, THENCE NORTH ON LEASE ROAD  
1.0 MILES, CONTINUING NORTHWEST 1.0 MILES, THENCE  
SOUTHWEST ON TRAIL ROAD 1.9 MILES, THENCE EAST 0.4  
MILES, TO A POINT ±600' SOUTH OF THE LOCATION.

## TOPOGRAPHIC LAND SURVEYORS

*Surveying & Mapping for the Oil & Gas Industry*

This location has been very carefully staked on the ground according to the best official survey records, maps, and other data available to us.

Review this plat and notify us immediately of any possible discrepancy.

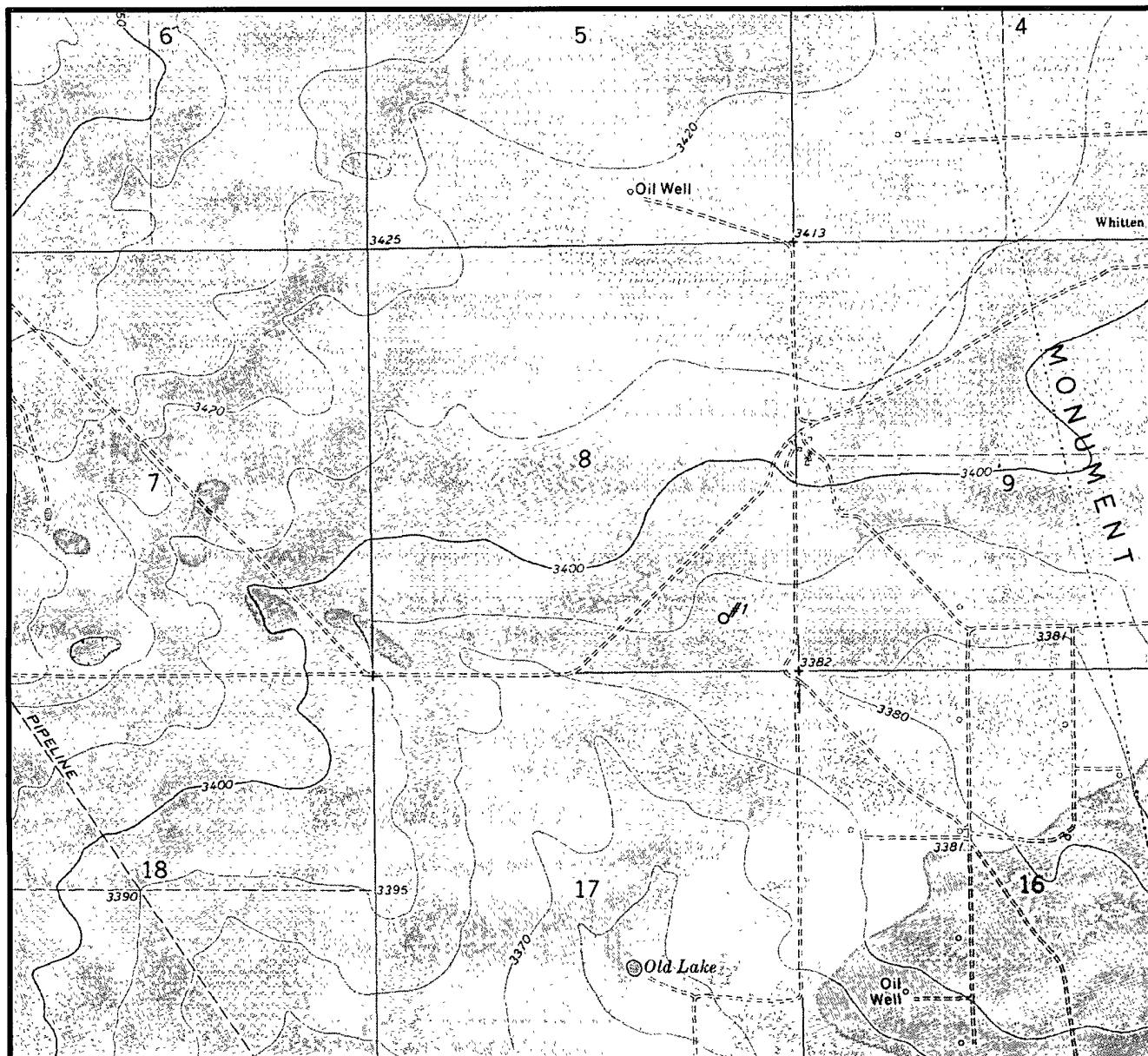
1307 N. HOBART  
 PAMPA, TX. 79065  
 (800) 658-6382

6709 N. CLASSEN BLVD.  
 OKLAHOMA CITY, OK. 73116  
 (800) 654-3219

2903 N. BIG SPRING  
 MIDLAND, TX. 79705  
 (800) 767-1653

## EXHIBIT "C"

## LOCATION &amp; ELEVATION VERIFICATION MAP



SCALE : 1" = 2000'

CONTOUR INTERVAL 10'

SECTION 8 TWP 25-S RGE 34-ESURVEY NEW MEXICO PRINCIPAL MERIDIANCOUNTY LEA STATE NMDESCRIPTION 660' FSL & 900' FELELEVATION 3386'OPERATOR LONE STAR OIL & GAS, INC.LEASE PEVEHOUSE 8 #1

U.S.G.S. TOPOGRAPHIC MAP

JAL, NEW MEXICOSCALED LAT. LAT.: N 32.2264163LONG. LONG.: W 103.2810836**TOPOGRAPHIC LAND SURVEYORS***Surveying & Mapping for the Oil & Gas Industry*

2903 N. BIG SPRING  
MIDLAND, TX. 79705  
(800) 767-1653

Pevehouse 8 - #1  
**Pressure Control Equipment**

The blowout preventer equipment (BOPE) shown in Exhibits "D", "E" and "F" will be utilized for the 12 ¼", 8 ¾" and 6 1/8" hole sections as follows:

- 2000 PSI WP rating for the 12 ¼" section as shown in Exhibit "D", Fig. 2.C.1

The 2M BOPE assembly will consist of a 13 5/8" annular preventer nipped up on the surface casing.

- 5000 PSI WP rating for the 8 ¾" and 6 1/8" sections as shown in Exhibit "E", Fig. 2.C.5.

The 5M BOPE assembly will consist of a 5000 PSI WP double ram-type preventer ( 4 ½" pipe and blind rams) and a 5000 PSI WP annular preventer (API RP53 Fig. 2C.5), nipped up on the 9 5/8" intermediate casing and used continuously until setting the 4 ½" casing at total depth of 14,000'.

BOPE will be tested as follows:

- Prior to drilling out from surface casing, test all BOPE to 1000 PSI using the rig pump.
- Prior to drilling out from 9 5/8" casing, test ram type preventers and choke manifold to 5000 PSI and annular to 50 % of rated WP using independent tester and test plug.

A rotating head will be installed on top of the annular preventer after setting the 9 5/8" casing @ 5600'.

All BOP's will be hydraulically operated. Pipe rams will be operationally checked each 24 hour period. Blind rams will be operationally checked on each trip out of hole. The kill line will be a minimum of 2" and will include a remote connection. The choke line will be a minimum of 3". A complete choke manifold schematic is shown in Exhibit "F".

NOTE: Contractor choke manifold has a 5000 PSI WP rating. Hydraulic choke and remote choke line valve required for the 6 1/8" hole section only.

# EXHIBIT "D"

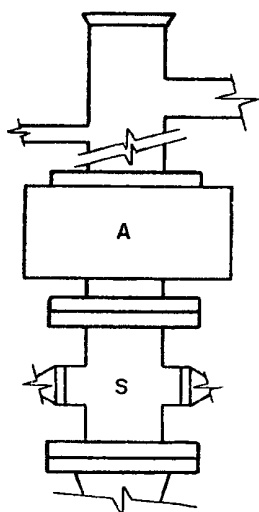


FIG. 2.C.1  
ARRANGEMENT SA

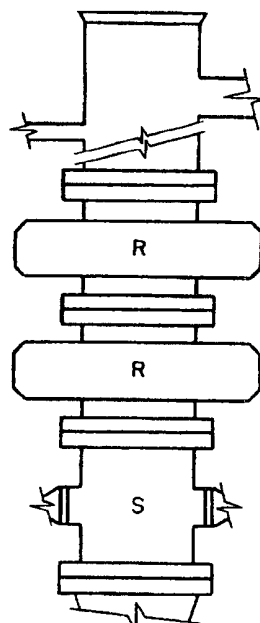


FIG. 2.C.2

ARRANGEMENT SRR  
Double Ram Type Preventers,  $R_d$ , Optional.

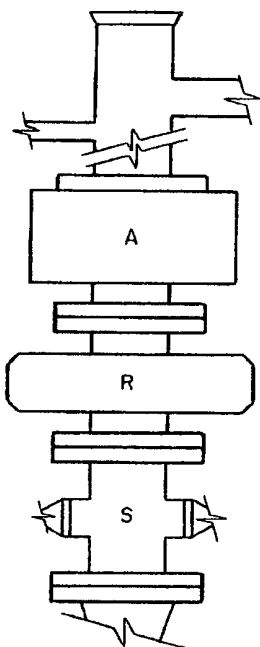


FIG. 2.C.3  
ARRANGEMENT SRA

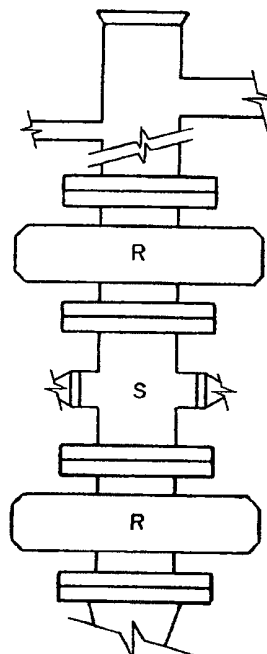


FIG. 2.C.4  
ARRANGEMENT RSR

**TYPICAL BLOWOUT PREVENTER  
ARRANGEMENTS FOR 2M RATED WORKING  
PRESSURE SERVICE – SURFACE INSTALLATION**

FIGURE 63, CONTINUED

# EXHIBIT "E"

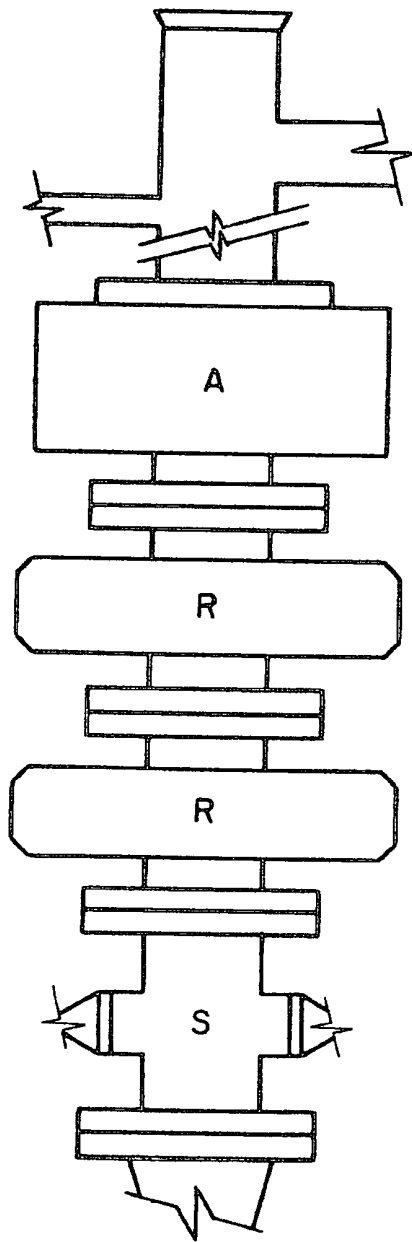


FIG. 2.C.5

ARRANGEMENT SRRA  
Double Ram Type Preventers,  $R_d$ , Optional.

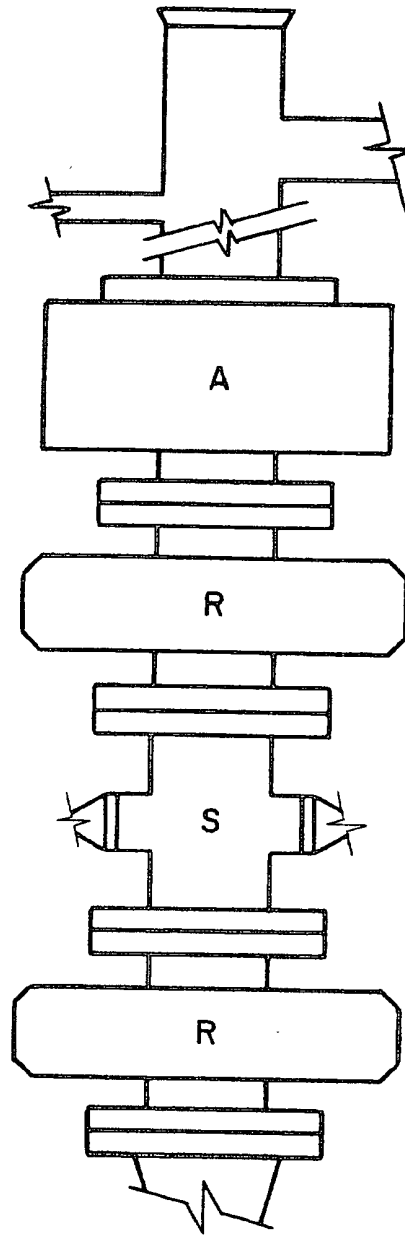


FIG. 2.C.6

ARRANGEMENT RSRA

**TYPICAL BLOWOUT PREVENTER  
ARRANGEMENTS FOR 3M AND 5M RATED  
WORKING PRESSURE SERVICE—  
SURFACE INSTALLATION**

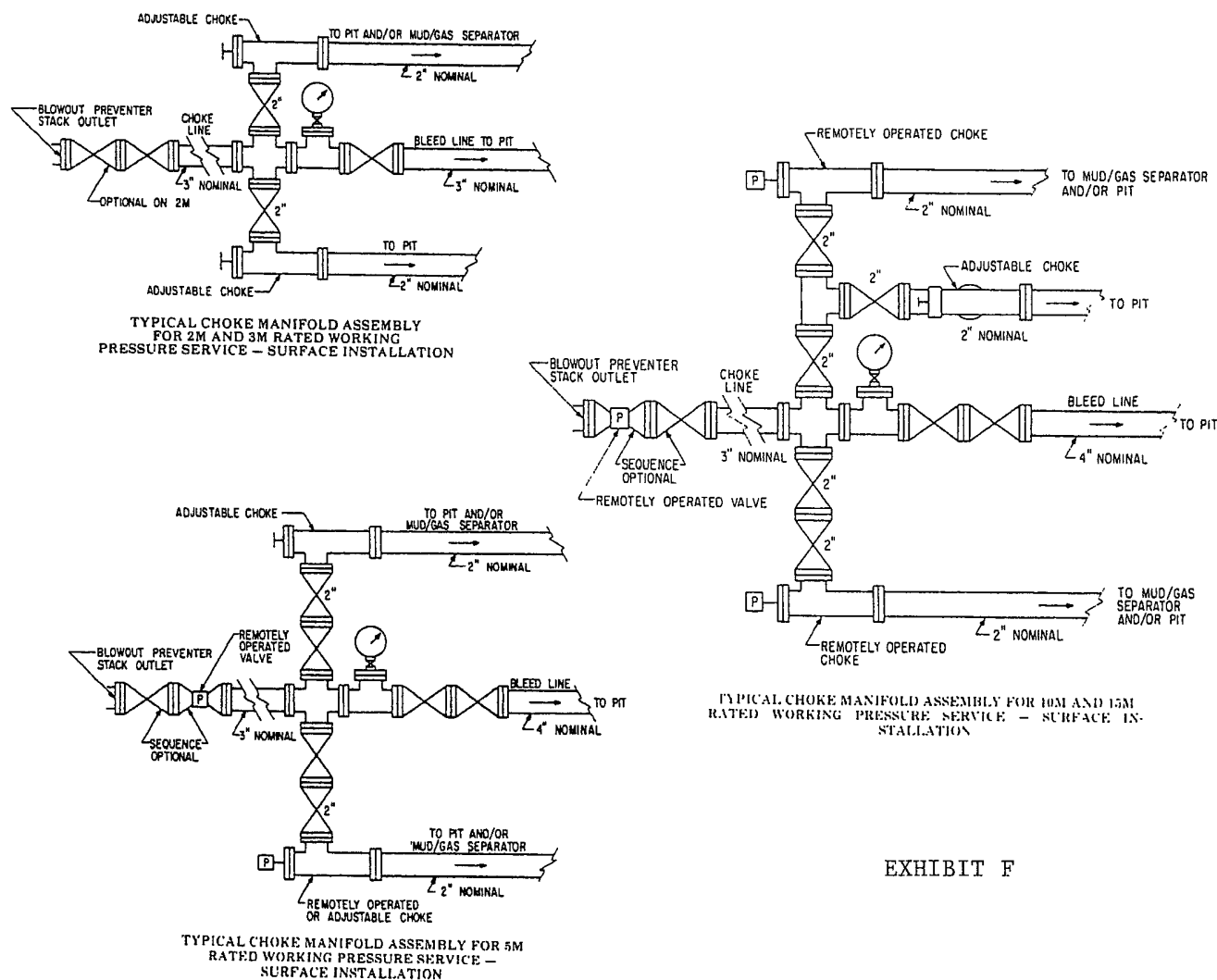


EXHIBIT F

COURTESY API

FIGURE 45. API RP53 RECOMMENDED CHOKE MANIFOLDS