

Submit 3 Copies To Appropriate District
Office
District I
1625 N. French Dr., Hobbs, NM 88240
District II
1301 W. Grand Ave., Artesia, NM 88210
District III
1000 Rio Brazos Rd., Aztec, NM 87410
District IV
1220 S. St. Francis Dr., Santa Fe, NM
87505

State of New Mexico
Energy, Minerals and Natural Resources

Form C-103
Revised June 10, 2003

OIL CONSERVATION DIVISION
1220 South St. Francis Dr.
Santa Fe, NM 87505

WELL API NO. 30-025-00359
5. Indicate Type of Lease STATE <input checked="" type="checkbox"/> FEE <input type="checkbox"/>
6. State Oil & Gas Lease No.
7. Lease Name or Unit Agreement Name North Anderson Ranch Unit 33
8. Well Number 3
9. OGRID Number 6137
10. Pool name or Wildcat North Anderson Ranch Wolfcamp

4. Well Location Unit Letter <u>K</u> : 1980' _____ feet from the <u>South</u> _____ line and 1980' _____ feet from the <u>West</u> _____ line Section <u>33</u> Township <u>15S</u> Range <u>32E</u> Lea _____ County _____
11. Elevation (Show whether DR, RKB, RT, GR, etc.) 4305' GL

SUNDRY NOTICES AND REPORTS ON WELLS

(DO NOT USE THIS FORM FOR PROPOSALS TO DRILL OR TO DEEPEN OR PLUG BACK TO A DIFFERENT RESERVOIR USE "APPLICATION FOR PERMIT" (FORM C-101) FOR SUCH PROPOSALS.)

1. Type of Well:
Oil Well ☒ Gas Well ☐ Other ☐

2. Name of Operator
Devon Energy Production Company, LP

3. Address of Operator
20 North Broadway, Suite 1500, Oklahoma City, Oklahoma 73102

4. Well Location

Unit Letter K : 1980' _____ feet from the South _____ line and 1980' _____ feet from the West _____ line

Section 33 Township 15S Range 32E Lea _____ County _____

11. Elevation (Show whether DR, RKB, RT, GR, etc.)
4305' GL

12. Check Appropriate Box to Indicate Nature of Notice, Report or Other Data

NOTICE OF INTENTION TO:

PERFORM REMEDIAL WORK ☐ PLUG AND ABANDON ☐

TEMPORARILY ABANDON ☐ CHANGE PLANS ☐

PULL OR ALTER CASING ☐ MULTIPLE COMPLETION ☐

OTHER: ☐

SUBSEQUENT REPORT OF:

REMEDIAL WORK ☐ ALTERING CASING ☐

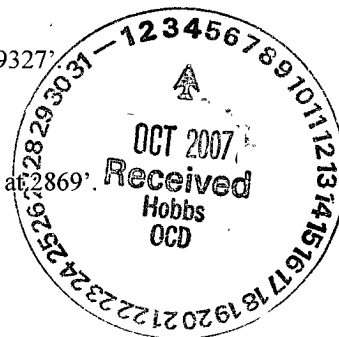
COMMENCE DRILLING OPNS. ☐ PLUG AND ABANDONMENT ☒

CASING TEST AND CEMENT JOB ☐

OTHER: ☐

13. Describe proposed or completed operations. (Clearly state all pertinent details, and give pertinent dates, including estimated date of starting any proposed work). SEE RULE 1103. For Multiple Completions: Attach wellbore diagram of proposed completion or recompletion.

1. MIRU on 9/11/07. POOH w/2-7/8" tubing. Set CIBP at 9366'. Dumped 5 Sx cement on top. TOC at 9327'.
2. Circulate hole w/ 10 ppg salt gelled mud.
2. Spot 25 Sx cement from 6714' to 6960'.
3. Spot 25 Sx cement at 4204'. Tagged TOC at 3936'. Covers 9-5/8" casing shoe at 4152'.
4. Cut 5-1/2" casing at 3000'. POOH w/ casing. Spot 30 Sx cement for stub plug at 3050'. Tagged TOC at 2869'.
5. Spot 35 Sx cement from 2424' to 2530'. (Base of salt at 2425')
6. Spot 35 Sx cement from 1374' to 1480'. (Top of salt at 1480')
7. Spot 35 Sx cement at 655'. Tagged TOC at 551'. Covers 13-3/8" casing shoe at 605'.
8. Spot 20 Sx cement from 60' to surface.
9. Cut wellhead off and set dry hole marker. Plugged & Abandoned on 10/2/07.



I hereby certify that the information above is true and complete to the best of my knowledge and belief.

SIGNATURE Ronnie G. Slack

TITLE: Engineering Technician

DATE 10/2/07

Type or print name Ronnie G. Slack

E-mail address: Ronnie.Slack@dvn.com

Telephone No. 405-552-4615

(This space for State use)

APPROVED BY Haug W. Wink TITLE OCD FIELD REPRESENTATIVE II/STAFF MANAGER

OCT 04 2007
DATE

Conditions of approval, if any:

Approved as to plugging of the Well Bore.
Liability under bond is retained until
surface restoration is completed.

DEVON ENERGY PRODUCTION COMPANY LP

Well Name. NORTH ANDERSON RANCH 33 #3		Field:	
Location 1980' FSL & 1980' FWL; SEC 33, T15S, R32E		County: LEA	State: NM
Elevation: 4318' KB; 4305' GL		Spud Date: 1/31/61	Compl Date:
API#: 30-025-00359	Prepared by: Ronnie Slack	Date: 10/2/07	Rev:

PLUGGED & ABANDONED - 10/2/07

17-1/2" hole
13-3/8", 48#, J55, @ 605'
 Cemented w/700 Sx to surface

Sqz holes @ 655'. Sqzd w/190 Sx. Toc 350' (2/95)

Sqz holes @ 1530'. Sqzd w/130 Sx. Toc 1450' (2/95)

TOC @ 2088' (70% Calc)

Note: 5-1/2" csg cut & pulled @ 3050' during P&A of 2/95
 Well re-entered in 12/98 Ran 5-1/2" lead pack off casing
 bowl & 83 jts of 15 5#, J55 Tag cut off at 3043' Set slips
 w/20 pts tension & tied 5-1/2" back to surface.

12-1/4" hole
9-5/8", 36#, J55, @ 4,152'
 Cemented w/700 Sx

Casing leak sqzd @ 4969' w/500 Sx, 75 Sx in formation,
 403 Sx up annulus TOC @ 3100'. (7/10/84)

Sqz holes @ 5750'. Sqzd w/80 Sx. Toc 5552' (2/95)

Sqz holes @ 6955'. Sqzd w/80 Sx. Toc 6708' (2/95)

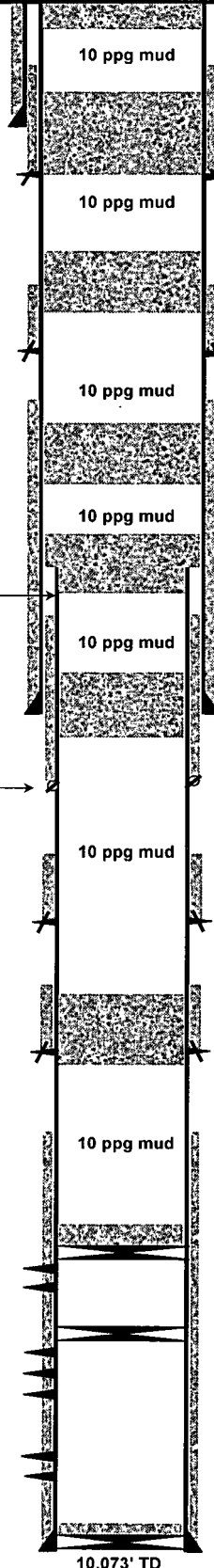
TOC @ 8238' (70% Calc.)

WOLFCAMP (8/16/07)
 9396-9400; 9433-9438; 9454-9456; 9480-9484;
 9514-9518; 9546-9554; 9656-9662

WOLFCAMP (3/61)
 9872' - 9882'
 9898' - 9913'
 9924' - 9939'

WOLFCAMP (12/98)
 9986' - 10006'
 10014' - 10026'

8-3/4" Hole
5-1/2", 17#, & 15.5#, N80 & J55, @ 10,067'
 Cemented w/500 Sx



- 1 Spot 20 Sx cement from 60' to surface
- 2 Cut wellhead off & set dry hole marker.
3. Plugged & Abandoned - 10/2/07

1. Spot 35 Sx cement @ 655'
2. Tagged TOC at 551'

- 1 Spot 35 Sx cement from 1374' to 1480'.
(Top of Salt @ 1480')

1. Spot 35 Sx cement from 2424' to 2530' '
(Base of Salt @ 2425')

1. Cut 5-1/2" casing @ 3000'. POOH w/ casing
2. Spot 30 Sx cement stub plug @ 3050'. Tagged TOC at 2869'

- 1 Spot 25 Sx cement at 4204'
2. Tagged TOC at 3936'

- 1 Spot 25 Sx cement from 6714' to 6960'

- 1 Circulated hole w/10 ppg mud

- 1 Set CIBP @ 9366' Dumped 5 Sx cement on top
2. TOC @ 9327'

CIBP @ 9822' (7/19/06)

1 bailer run of cement on top
 CIBP @ 10067' (12/18/98)

10,073' TD