

Submit 3 Copies To Appropriate District Office
District I
1625 N. French Dr., Hobbs, NM 88240
District II
1301 W. Grand Ave., Artesia, NM 88210
District III
1000 Rio Brazos Rd., Aztec, NM 87410
District IV
1220 S. St. Francis Dr., Santa Fe, NM 87505

State of New Mexico
Energy, Minerals and Natural Resources

OIL CONSERVATION DIVISION
1220 South St. Francis Dr.
Santa Fe, NM 87505

Form C-103
Revised March 25, 1999

SUNDRY NOTICES AND REPORTS ON WELLS (DO NOT USE THIS FORM FOR PROPOSALS TO DRILL OR TO DEEPEN OR PLUG BACK TO A DIFFERENT RESERVOIR. USE "APPLICATION FOR PERMIT" (FORM C-101) FOR SUCH PROPOSALS.)		WELL API NO. 30-025-03000 03074
1. Type of Well: Oil Well <input checked="" type="checkbox"/> Gas Well <input type="checkbox"/> Other <input type="checkbox"/>		5. Indicate Type of Lease STATE <input checked="" type="checkbox"/> FEE <input type="checkbox"/>
2. Name of Operator ConocoPhillips Co.		6. State Oil & Gas Lease No. E-3140
3. Address of Operator 4001 Penbrook, Odessa, TX 79762		7. Lease Name or Unit Agreement Name: Vacuum Abo Unit
4. Well Location Unit Letter P : 990 feet from the South line and 990 feet from the East line Section 5 Township 18S Range 35E NMPM Lea County		8. Well No. Btry. 2, Tr. 13, #19
10. Elevation (Show whether DR, RKB, RT, GR, etc.) 3,958' GL		9. Pool name or Wildcat Vacuum Abo Reef

11. Check Appropriate Box to Indicate Nature of Notice, Report or Other Data

NOTICE OF INTENTION TO:

PERFORM REMEDIAL WORK ☐ PLUG AND ABANDON ☒
TEMPORARILY ABANDON ☐ CHANGE PLANS ☐
PULL OR ALTER CASING ☐ MULTIPLE COMPLETION ☐
OTHER: ☐

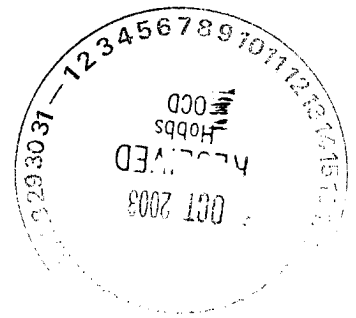
SUBSEQUENT REPORT OF:

REMEDIAL WORK ☐ ALTERING CASING ☐
COMMENCE DRILLING OPNS. ☐ PLUG AND ABANDONMENT ☐
CASING TEST AND CEMENT JOB ☐
OTHER: ☐

12. Describe proposed or completed operations. (Clearly state all pertinent details, and give pertinent dates, including estimated date of starting any proposed work). SEE RULE 1103. For Multiple Completions: Attach wellbore diagram of proposed completion or recompilation.

See attached procedure & wellbore diagrams.

THE COMMISSION MUST BE NOTIFIED 24 HOURS PRIOR TO THE BEGINNING OF PLUGGING OPERATIONS FOR THE C-103 TO BE APPROVED.



I hereby certify that the information above is true and complete to the best of my knowledge and belief.

SIGNATURE James F. Newman TITLE Engineer DATE 10/10/03

Type or print name James F. Newman, P.E. Triple N Services, Inc. Telephone No. 432-687-1994
(This space for State use)

APPROVED BY Chris Williams TITLE OC DISTRICT SUPERVISOR/GENERAL MANAGER DATE OCT 2 4 2003
Conditions of approval, if any:

ConocoPhillips

Proposed Plugging Procedure Page 1 of 2

**Vacuum Abo Unit #13-19
Vacuum Abo Reef Field
Section 5, T18S, R35E
Lea County, New Mexico**

See attached wellbore diagrams for wellbore configuration

SI injector – Loc-Set packer w/ on/off tool and profile nipple @ 8,602', tubing in hole

- Notify BLM & OCD 24 hrs prior to move in, and 4 hrs prior to plugs
- Hold daily tailgate safety meetings w/ crews

1. Set steel pit and flow well down as needed.
2. MIRU plugging equipment. ND wellhead and NU 6" 3,000# manual BOP. Release loc-set packer and POOH standing back tubing.
3. RIH w/ tbg-set CIBP on injection tubing to 8,613'. RU cementer and set CIBP. Circulate hole w/ mud and pump 25 sx C cmt on CIBP 8,613 – 8,500'. **Abo plug**
4. POOH w/ tbg to 6,329' and pump 25 sx C cmt 6,329 – 6,229'. **Glorieta plug**
5. POOH w/ tbg to 4,395' and pump 25 sx C cmt 4,395 – 4,295'. **Grayburg plug**
6. RIH w/ wireline and cut 5½" casing @ 3,000', POOH w/ wireline. ND wellhead and RU csg tools, POOH w/ 5½" casing.
7. RIH w/ tbg to 3,050' and pump 40 sx C cmt w/ 2% CaCl₂ @ 3,050'. WOC and tag this plug. **Casing stub and base of salt plug**
8. POOH w/ tbg to 1,598' and pump 35 sx C cmt 1,598 – 1,498'. **Top of salt plug**
9. RIH w/ wireline and perforate casing @ 363'. POOH w/ wireline.
10. RIH w/ 8-5/8" AD-1 packer to 180'. RU cementer and load hole w/ mud, set packer. Establish rate into perforations and squeeze 115 sx C cmt w/ 2% CaCl₂ 363 - 263'. WOC and tag this plug. **surface casing shoe plug**
11. RIH w/ wireline and perforate 8-5/8" casing @ 60'. POOH w/ wireline.
12. ND BOP and NU wellhead. Establish circulation and 20 sx C cmt 60' to surface. **surface plug**

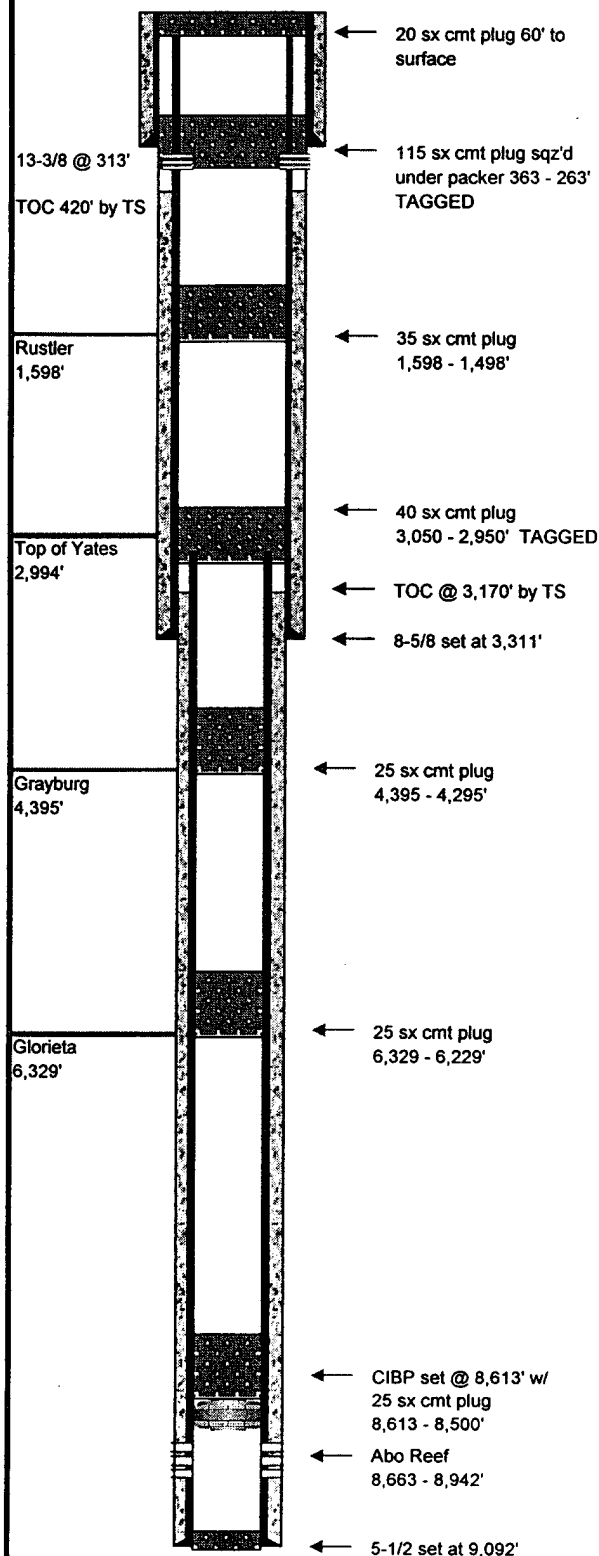
ConocoPhillips

**Proposed Plugging Procedure
Page 2 of 2**

**Vacuum Abo Unit #13-19
Vacuum Abo Reef Field
Section 5, T18S, R35E
Lea County, New Mexico**

See attached wellbore diagrams for wellbore configuration

- 13. SI well. RDMO. Clean steel pit and dispose of bottoms.**
- 14. Cut off wellhead and anchors, level location. Leave location clean and free of trash.**



Field Name: Vacuum Abo Reef

County: Lea

Well Type:

State: New Mexico

Depth: 9,100

RRC District:

Drilling Commenced: 9/15/1961

Section: 5

Drilling Completed: 10/21/1961

Block:

Date Well Plugged:

Survey: T18S; R35E

Longitude:

Unit P, 990 FSL & 990 FEL

Latitude:

Freshwater Depths:

API #: 30-025-03074

Lease or ID: E-3140

Casing

Description	Size (inches)	Depth (feet)	TOC (feet)	Cement (sacks)	Hole Size (inches)
Surface:	13-3/8	313	Surface	375	17
Intermediate:	8-5/8	3,311	420	1400	11
Production:	5-1/2	9,092	3,170	679	7-7/8

Proposed Plugs

Description	Top (feet)	Depth (feet)	Volume (sacks)	Volume (cu ft)
1 CIBP w/ 25 sx C cmt	8,500	8,613	25	33
2 class C cement, balanced	6,229	6,329	25	33
3 class C cement, balanced	4,295	4,395	25	33
4 class C cement, balanced	2,950 (TAG)	3,050	40	53
5 class C cement, balanced	1,498	1,598	35	46
6 class C cmt, perf & sqz w/ packer	263 (TAG)	363	115	152
7 class C cement, balanced	surface	60	20	26

Perforations

Formation	Top (feet)	Depth (feet)
Abo Reef	8,663	8,942

Formations

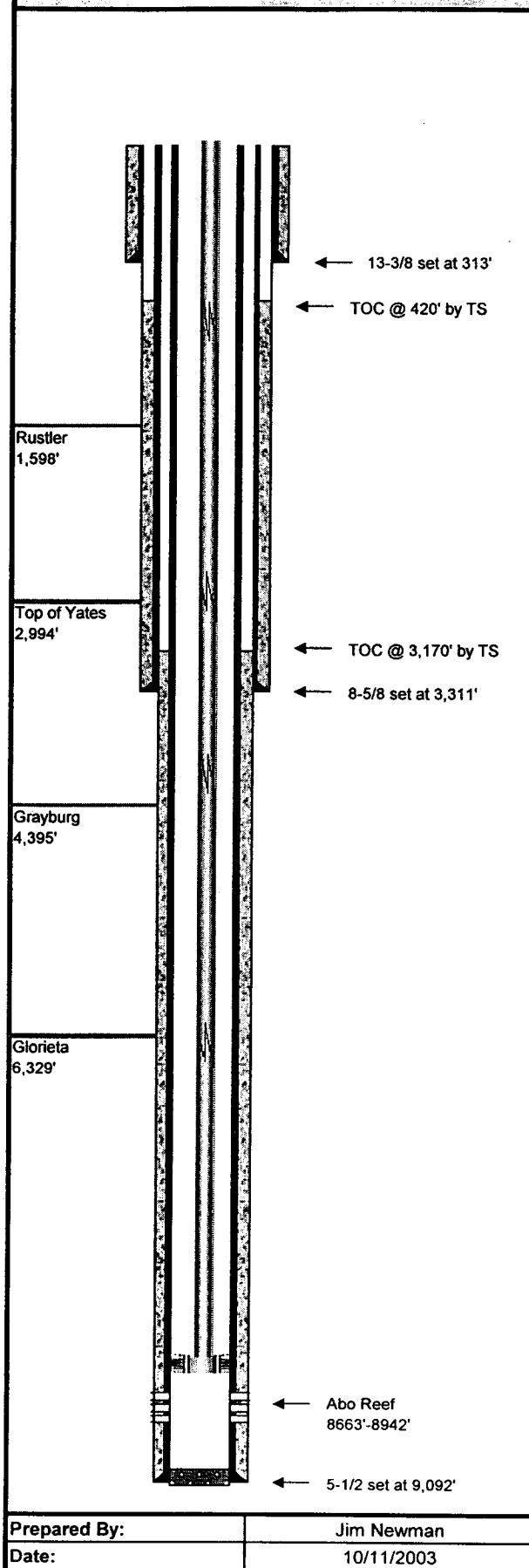
Name	Top of Formation
Rustler	1,598
Top of Yates	2,994
Grayburg	4,395
Glorieta	6,329

Comments

Nickel plated Baker Model A-3 Loc-Set w/ on/off tool & 1.78" BFC "R" profile on 2-3/8" tubing set 6/9/87, inhibited brine in annulus.

Prepared By: Jim Newman

Date: 10/11/2003



Field Name: Vacuum Abo Reef

County: Lea

Well Type:

State: New Mexico

Depth: 9,100

RRC District:

Drilling Commenced: 9/15/1961

Section: 5

Drilling Completed: 10/21/1961

Block:

Date Well Plugged:

Survey: T18S; R35E

Longitude:

Unit P, 990 FSL & 990 FEL

Latitude:

API #:

30-025-03074

Lease or ID:

E-3140

Freshwater Depths:

Casing

Description	Size (inches)	Depth (feet)	TOC (feet)	Cement (sacks)	Hole Size (inches)
Surface:	13-3/8	313	Surface	375	17
Intermediate:	8-5/8	3,311	420	1400	11
Production:	5-1/2	9,092	3,170	679	7-7/8

Existing Plugs

Description	Top (feet)	Depth (feet)	Volume (sacks)	Volume (cu ft)

Perforations

Formation	Top (feet)	Depth (feet)
Abo Reef	8,663	8,942

Formations

Name	Top of Formation
Rustler	1,598
Top of Yates	2,994
Grayburg	4,395
Glorieta	6,329

Comments

Nickel plated Baker Model A-3 Loc-Set w/ on/off tool & 1.78" BFC "R" profile on 2-3/8" tubing set 6/9/87, inhibited brine in annulus.