

Submit 3 Copies To Appropriate District Office
District I
1625 N. French Dr., Hobbs, NM 88240
District II
1301 W. Grand Ave., Artesia, NM 88210
District III
1000 Rio Brazos Rd., Aztec, NM 87410
District IV
1220 S St Francis Dr., Santa Fe, NM 87505

State of New Mexico
Energy, Minerals and Natural Resources

Amended

Form C-103
May 27, 2004

OIL CONSERVATION DIVISION
1220 South St. Francis Dr.
Santa Fe, NM 87505

| | |
|---|------------------------------------|
| WELL API NO. | 30-025-38426 |
| 5. Indicate Type of Lease STATE <input checked="" type="checkbox"/> FEE <input type="checkbox"/> | |
| 6. State Oil & Gas Lease No. | |
| 7. Lease Name or Unit Agreement Name STATE F I | |
| 8. Well Number | 016 |
| 9. OGRID Number | 217817 |
| 10. Pool name or Wildcat | Hardy;Blinebry/Hardy;Tubb-Drinkard |

SUNDRY NOTICES AND REPORTS ON WELLS
(DO NOT USE THIS FORM FOR PROPOSALS TO DRILL OR TO DEEPEN OR PLUG BACK TO A DIFFERENT RESERVOIR. USE "APPLICATION FOR PERMIT" (FORM C-101) FOR SUCH PROPOSALS.)

1. Type of Well: Oil Well ☒ Gas Well ☐ Other

2. Name of Operator
ConocoPhillips Company

3. Address of Operator 3300 N. "A" Street, Bldg. 6 #243
Midland, TX 79705-5406

4. Well Location
Unit Letter L : 1980 feet from the SOUTH line and 660 feet from the WEST line
Section 1 Township 21S Range 36E NMPM County LEA

11. Elevation (Show whether DR, RKB, RT, GR, etc.)
3505' BLR

Pit or Below-grade Tank Application ☐ or Closure ☐

Pit type Depth to Groundwater Distance from nearest fresh water well Distance from nearest surface water

Pit Liner Thickness: mil Below-Grade Tank: Volume bbls; Construction Material

12. Check Appropriate Box to Indicate Nature of Notice, Report or Other Data

NOTICE OF INTENTION TO:

PERFORM REMEDIAL WORK ☐ PLUG AND ABANDON ☐
TEMPORARILY ABANDON ☐ CHANGE PLANS ☐
PULL OR ALTER CASING ☐ MULTIPLE COMPL ☐

SUBSEQUENT REPORT OF:

REMEDIAL WORK ☐ ALTERING CASING ☐
COMMENCE DRILLING OPNS. ☐ P AND A ☐
CASING/CEMENT JOB ☐

OTHER: Request DHC authorization .R113 63 for commingling ☒

OTHER: Request DHC authorization .(R113-63) for commingling ☒

13. Describe proposed or completed operations. (Clearly state all pertinent details, and give pertinent dates, including estimated date of starting any proposed work). SEE RULE 1103. For Multiple Completions: Attach wellbore diagram of proposed completion or recompletion.

ConocoPhillips Company Respectfully requests approval to downhole commingle production in the Hardy; Blinebry ; Hardy; Tubb/Drinkard DHC authority (R113-63) pre approved pool in area.

The Hardy; Tubb/Drinkard (29760) zone is perforated at 6449'-6592' and the Hardy; Blinebry (29710) zone is perforated at 5624'-5908'. Commingling will not reduce the value of the total remaining production.

ConocoPhillips tested the Blinebry zone on 8/19/2007 with 35 BO, 40 MCF, and 281 BW.

Currently the Hardy; Blinbry is the only zone we are producing from. There is a CIBP @6000'. Currently we are producing 100% from the Hardy; Blinbry. The plan is to remove the plug at a later date and produce from both zones. Allocation method to be used will be based upon well test.

Notification was made to the NMBLM & NMOCD.

Interest owners are the same. Per GT

DHC Order No. HOB-0223



I hereby certify that the information above is true and complete to the best of my knowledge and belief. I further certify that any pit or below-grade tank has been/will be constructed or closed according to NMOCD guidelines ☐, a general permit ☐ or an (attached) alternative OCD-approved plan ☐.

SIGNATURE Gay Thomas

TITLE Regulatory Technician

DATE 10/22/2007

Type or print name Gay Thomas

E-mail address: Gay.Thomas@conocophillips.com Telephone No. (432)688-6818

For State Use Only

APPROVED BY:

Chris Williams

OCD DISTRICT SUPERVISOR/GENERAL MANAGER

TITLE

DATE

OCT 25 2007

Conditions of Approval (if any):

DISTRICT I
1625 N. French Dr., Hobbs, NM 88240

DISTRICT II
1301 W. Grand Avenue, Artesia, NM 88210

DISTRICT III
1000 Rio Brazos Rd., Aztec, NM 87410

DISTRICT IV
1220 S. St. Francis Dr., Santa Fe, NM 87505

State of New Mexico
Energy, Minerals & Natural Resources Department

OIL CONSERVATION DIVISION
1220 South St. Frances Dr.
Santa Fe, NM 87505

Form C-102
Revised October 12, 2005
Submit to Appropriate District Office
State Lease - 4 Copies
Fee Lease - 3 Copies

☐ AMENDED REPORT

WELL LOCATION AND ACREAGE DEDICATION PLAT

| | | |
|---------------|----------------|-----------------|
| API Number | Pool Code | Pool Name |
| 30-025-38426 | 29710 | Hardt; Blinebry |
| Property Code | Property Name | Well Number |
| 31471 | STATE F-1 | 16 |
| OGRID No. | Operator Name | Elevation |
| 217817 | CONOCOPHILLIPS | 3505' |

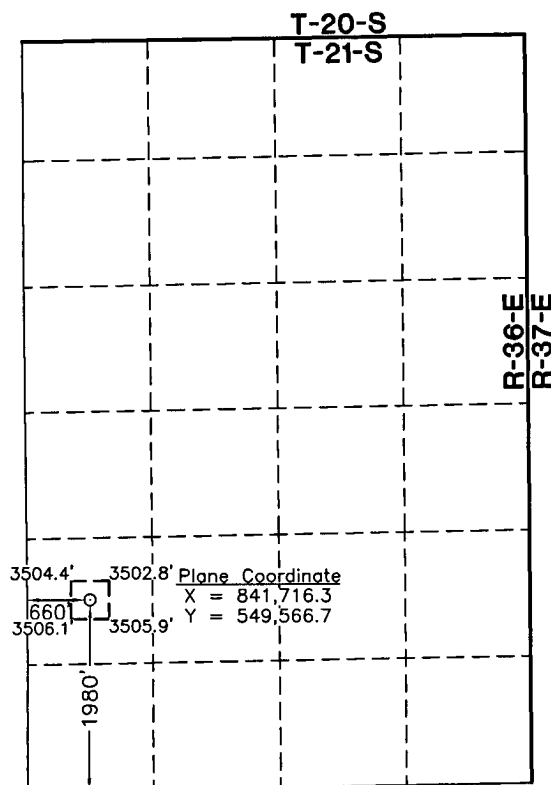
Surface Location

| | | | | | | | | | |
|---------------|---------|----------|-------|---------|---------------|------------------|---------------|----------------|--------|
| UL or lot No. | Section | Township | Range | Lot Idn | Feet from the | North/South line | Feet from the | East/West line | County |
| L | 1 | 21 S | 36 E | | 1980 | SOUTH | 660 | WEST | LEA |

Bottom Hole Location If Different From Surface

| | | | | | | | | | |
|-----------------|-----------------|--------------------|-----------|---------|---------------|------------------|---------------|----------------|--------|
| UL or lot No. | Section | Township | Range | Lot Idn | Feet from the | North/South line | Feet from the | East/West line | County |
| | | | | | | | | | |
| Dedicated Acres | Joint or Infill | Consolidation Code | Order No. | | | | | | |

NO ALLOWABLE WILL BE ASSIGNED TO THIS COMPLETION UNTIL ALL INTERESTS HAVE BEEN CONSOLIDATED OR A NON-STANDARD UNIT HAS BEEN APPROVED BY THE DIVISION



NOTE:

- 1) Plane Coordinates shown hereon are Transverse Mercator Grid and Conform to the "New Mexico Coordinate System", New Mexico East Zone, North American Datum of 1927. Distances shown hereon are mean horizontal surface values.

1" = 2000'

OPERATOR CERTIFICATION

I hereby certify the information contained herein is true and complete to the best of my knowledge and belief, and that this organization either owns a working interest or unleased mineral interest in the land including the proposed bottom hole location or has a right to drill this well at this location pursuant to a contract with an owner of such a mineral or working interest, or to a voluntary pooling agreement or a compulsory pooling order heretofore entered by the division.

Signature

Date

Printed Name

SURVEYOR CERTIFICATION

I hereby certify that the well location shown on this plat was plotted from field notes of actual surveys made by me or under my supervision and that the same is true and correct to the best of my belief.

May 18, 2007

Date of Survey

Signature & Seal of Professional Surveyor

MAISON MCDONALD
NEW MEXICO
12185
SURVEYOR

W.O. Num. 2007-0550

Certificate No. MAISON MCDONALD 12185

DISTRICT I
1625 N. French Dr., Hobbs, NM 88240

DISTRICT II
1301 W. Grand Avenue, Artesia, NM 88210

DISTRICT III
1000 Rio Brazos Rd., Aztec, NM 87410

DISTRICT IV
1220 S. St. Francis Dr., Santa Fe, NM 87505

State of New Mexico
Energy, Minerals & Natural Resources Department

OIL CONSERVATION DIVISION
1220 South St. Frances Dr.
Santa Fe, NM 87505

Form C-102
Revised October 12, 2005
Submit to Appropriate District Office
State Lease - 4 Copies
Fee Lease - 3 Copies

☐ AMENDED REPORT

WELL LOCATION AND ACREAGE DEDICATION PLAT

| | | |
|------------------------|---|-----------------------------------|
| API Number 30-025- | Pool Code 29760 | Pool Name Hardy; Tubb-Drinkard |
| Property Code 31471 | Property Name STATE F-1 | Well Number 16 |
| OGRID No. 217817 | Operator Name CONOCOPHILLIPS COMPANY | Elevation 3505' |

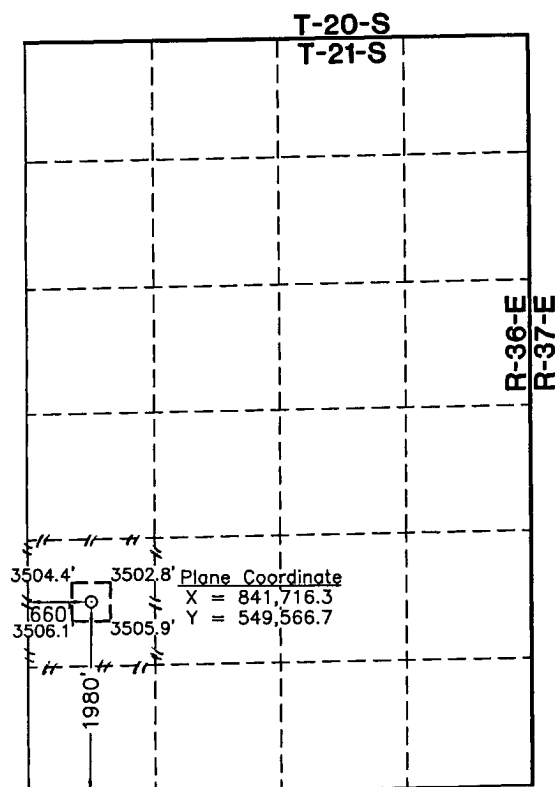
Surface Location

| | | | | | | | | | |
|--------------------|--------------|------------------|---------------|---------|-----------------------|---------------------------|----------------------|------------------------|---------------|
| UL or lot No. L | Section 1 | Township 21 S | Range 36 E | Lot Idn | Feet from the 1980 | North/South line SOUTH | Feet from the 660 | East/West line WEST | County LEA |
|--------------------|--------------|------------------|---------------|---------|-----------------------|---------------------------|----------------------|------------------------|---------------|

Bottom Hole Location If Different From Surface

| | | | | | | | | | |
|-----------------------|-----------------|--------------------|-----------|---------|---------------|------------------|---------------|----------------|--------|
| UL or lot No. | Section | Township | Range | Lot Idn | Feet from the | North/South line | Feet from the | East/West line | County |
| Dedicated Acres 40 | Joint or Infill | Consolidation Code | Order No. | | | | | | |

NO ALLOWABLE WILL BE ASSIGNED TO THIS COMPLETION UNTIL ALL INTERESTS HAVE BEEN CONSOLIDATED OR A NON-STANDARD UNIT HAS BEEN APPROVED BY THE DIVISION



NOTE:

- 1) Plane Coordinates shown hereon are Transverse Mercator Grid and Conform to the "New Mexico Coordinate System", New Mexico East Zone, North American Datum of 1927. Distances shown hereon are mean horizontal surface values.

1" = 2000'

OPERATOR CERTIFICATION

I hereby certify the information contained herein is true and complete to the best of my knowledge and belief, and that this organization either owns a working interest or undivided mineral interest in the land including the proposed bottom hole location or has a right to drill this well at this location pursuant to a contract with an owner of such a mineral or working interest, or to a voluntary pooling agreement or a compulsory pooling order heretofore entered by the division.

Celeste G. Dale 06/05/07
Signature Date
Celeste G. Dale
Printed Name

SURVEYOR CERTIFICATION

I hereby certify that the well location shown on this plat was plotted from field notes of actual surveys made by me or under my supervision and that the same is true and correct to the best of my belief.

May 18, 2007

Date of Survey
Signature & Seal of Professional Surveyor

[Signature]
W.O. Num 2007-0550

Certificate No. MACON, McDONALD 12185