

District I

1625 N French Dr., Hobbs, NM 88240

District II

1301 W. Grand Ave., Artesia, NM 88210

District III

1000 Rio Brazos Rd, Aztec, NM 87410

District IV

1220 S St Francis Dr., Santa Fe, NM 87505

OIL CONSERVATION DIVISION
1220 South St. Francis Dr.
Santa Fe, NM 87505

WELL API NO.

30-025-38397

5. Indicate Type of Lease

STATE ☐ FEE ☒

6. State Oil & Gas Lease No.

N/A

7. Lease Name or Unit Agreement Name
Blankenship

8. Well Number 4

9. OGRID Number 00873

10. Pool name or Wildcat
House; Blinebry S, Tubb, Drinkard

SUNDRY NOTICES AND REPORTS ON WELLS

(DO NOT USE THIS FORM FOR PROPOSALS TO DRILL OR TO DEEPEN OR PLUG BACK TO A DIFFERENT RESERVOIR USE "APPLICATION FOR PERMIT" (FORM C-101) FOR SUCH PROPOSALS.)

1. Type of Well: Oil Well ☒ Gas Well ☐ Other

2. Name of Operator

Apache Corporation

3. Address of Operator 6120 S Yale Ave, Suite 1500
Tulsa, OK 74136-4224

4. Well Location

Unit Letter L : 2310 feet from the South line and 990 feet from the West line
Section 12 Township 20S Range 38E NMPM County Lea11. Elevation (Show whether DR, RKB, RT, GR, etc.)
3563' GRPit or Below-grade Tank Application ☐ or Closure ☐

Pit type _____ Depth to Groundwater _____ Distance from nearest fresh water well _____ Distance from nearest surface water _____

Pit Liner Thickness: _____ mil Below-Grade Tank: Volume _____ bbls; Construction Material _____

12. Check Appropriate Box to Indicate Nature of Notice, Report or Other Data

NOTICE OF INTENTION TO:

PERFORM REMEDIAL WORK ☐ PLUG AND ABANDON ☐
TEMPORARILY ABANDON ☐ CHANGE PLANS ☐
PULL OR ALTER CASING ☐ MULTIPLE COMPL ☐

SUBSEQUENT REPORT OF:

REMEDIAL WORK ☐ ALTERING CASING ☐
COMMENCE DRILLING OPNS. ☐ P AND A ☐
CASING/CEMENT JOB ☐OTHER: Request DHC: Blinebry/Tubb/Drinkard ☒OTHER: ☐

13. Describe proposed or completed operations. (Clearly state all pertinent details, and give pertinent dates, including estimated date of starting any proposed work). SEE RULE 1103. For Multiple Completions: Attach wellbore diagram of proposed completion or recompletion.

Pursuant to Division Order R-11363

Pool Names: ☒ House; Blinebry South 33225
☒ House; Tubb 78760
☒ House; Drinkard 33250

Perforations:

BLINEBRY 6034-38', 6088-92', 6129-33', 6176-80', 6238-42', 6312-16' 2 JSPF
TUBB 6608-12', 6631-35', 6652-56', 6715-19', 6747-51', 6793-97' 2 JSPF
DRINKARD 6960-64', 6996-7000', 7010-14', 7044-48' 2 JSPF

The allocation method will be as follows:

	Test	35 BO	X 118 MCF	X 153 BW
Blinebry	9 BO	26%	30 MCF	25% 89 BW 58%
Tubb	16 BO	46%	49 MCF	42% 27 BW 18%
Drinkard	10 BO	28%	39 MCF	33% 37 BW 24%
TOTAL	35 BO	100%	118 MCF	100% 153 BW 100%

Downhole commingling will not reduce the value of these pools.

Ownership is the same for each of these pools.

DHC Order No:

HOB-0214A

I hereby certify that the information above is true and complete to the best of my knowledge and belief. I further certify that any pit or below-grade tank has been/will be constructed or closed according to NMOCD guidelines ☐, a general permit ☐ or an (attached) alternative OCD-approved plan ☐.SIGNATURE Sophie MackayTITLE Engineering TechDATE 10/08/2007Type or print name Sophie MackayE-mail address: sophie.mackay@apachecorp.com Telephone No. (918)491-4864

For State Use Only

APPROVED BY: Chris Williams

OC DISTRICT SUPERVISOR/GENERAL MANAGER

TITLE

DATE

NOV 02 2007

Conditions of Approval (if any):

DISTRICT I

1625 N. FRENCH DR., HOBBS, NM 88240

DISTRICT II

1301 W. GRAND AVENUE, ARTESIA, NM 88210

DISTRICT III

1000 Rio Brazos Rd., Aztec, NM 87410

DISTRICT IV

1220 S. ST. FRANCIS DR., SANTA FE, NM 87505

State of New Mexico

Energy, Minerals and Natural Resources Department

OIL CONSERVATION DIVISION
1220 SOUTH ST. FRANCIS DR.
Santa Fe, New Mexico 87505

Form C-102

Revised October 12, 2005

Submit to Appropriate District Office

State Lease - 4 Copies

Fee Lease - 3 Copies

WELL LOCATION AND ACREAGE DEDICATION PLAT

☐ AMENDED REPORT

API Number 30-025-38397	Pool Code 33225	Pool Name House; Blinebry, South
Property Code 303209	Property Name BLANKENSHIP	Well Number 4
OGRID No. 873	Operator Name APACHE CORPORATION	Elevation 3563'

Surface Location

UL or lot No.	Section	Township	Range	Lot Idn	Feet from the	North/South line	Feet from the	East/West line	County
L	12	20-S	38-E		2310	SOUTH	990	WEST	LEA

Bottom Hole Location If Different From Surface

UL or lot No.	Section	Township	Range	Lot Idn	Feet from the	North/South line	Feet from the	East/West line	County
Dedicated Acres 40	Joint or Infill	Consolidation Code	Order No.						

NO ALLOWABLE WILL BE ASSIGNED TO THIS COMPLETION UNTIL ALL INTERESTS HAVE BEEN CONSOLIDATED
OR A NON-STANDARD UNIT HAS BEEN APPROVED BY THE DIVISION

	<p>GEODETTIC COORDINATES NAD 27 NME</p> <p>Y=579305.1 N X=877720.3 E</p> <p>LAT.=32.586630° N LONG.=103.107028° W</p> <p>LAT.=32°35'11.87" N LONG.=103°06'25.30" W</p>	<p>OPERATOR CERTIFICATION</p> <p>I hereby certify that the information herein is true and complete to the best of my knowledge and belief, and that this organization either owns a working interest or unleased mineral interest in the land including the proposed bottom hole location or has a right to drill this well at this location pursuant to a contract with an owner of such mineral or working interest, or to a voluntary pooling agreement or a compulsory pooling order heretofore entered by the division.</p> <p><i>S. Mackay</i> 8/6/2007 Signature Date Sophie Mackay Printed Name</p>
	<p>SURVEYOR CERTIFICATION</p> <p>I hereby certify that the well location shown on this plat was plotted from field notes of actual surveys made by me or under my supervision, and that the same is true and correct to the best of my belief.</p> <p>APRIL 18, 2007 Date Surveyed JR Signature & Seal of Professional Surveyor <i>Gary E. Eddson</i> 8/2/07 07:11:05:12 Certificate No. GARY EDDSON 12641</p>	

DISTRICT I

1625 N. FRENCH DR., HOBBS, NM 88240

DISTRICT II

1301 W. GRAND AVENUE, ARTESIA, NM 88210

DISTRICT III

1000 Rio Brazos Rd., Aztec, NM 87410

DISTRICT IV

1220 S. ST. FRANCIS DR., SANTA FE, NM 87505

State of New Mexico

Energy, Minerals and Natural Resources Department

OIL CONSERVATION DIVISION
1220 SOUTH ST. FRANCIS DR.
Santa Fe, New Mexico 87505

Form C-102

Revised October 12, 2005

Submit to Appropriate District Office

State Lease - 4 Copies

Fee Lease - 3 Copies

WELL LOCATION AND ACREAGE DEDICATION PLAT

☐ AMENDED REPORT

API Number 30-025-38397	Pool Code 78760	Pool Name House; Tubb
Property Code 303209	Property Name BLANKENSHIP	Well Number 4
OGRID No. 873	Operator Name APACHE CORPORATION	Elevation 3563'

Surface Location

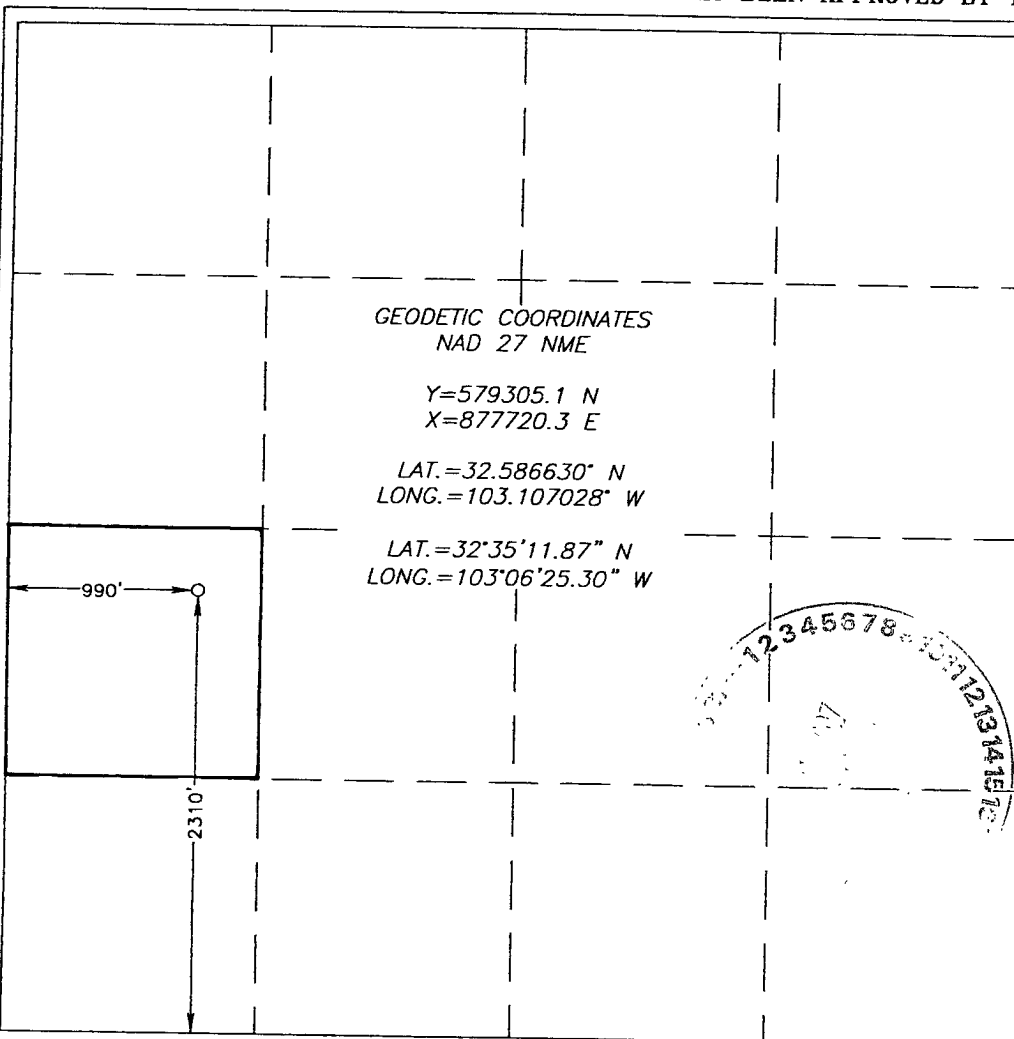
UL or lot No.	Section	Township	Range	Lot Idn	Feet from the	North/South line	Feet from the	East/West line	County
L	12	20-S	38-E		2310	SOUTH	990	WEST	LEA

Bottom Hole Location If Different From Surface

UL or lot No.	Section	Township	Range	Lot Idn	Feet from the	North/South line	Feet from the	East/West line	County

Dedicated Acres 40	Joint or Infill	Consolidation Code	Order No.
-----------------------	-----------------	--------------------	-----------

NO ALLOWABLE WILL BE ASSIGNED TO THIS COMPLETION UNTIL ALL INTERESTS HAVE BEEN CONSOLIDATED
OR A NON-STANDARD UNIT HAS BEEN APPROVED BY THE DIVISION



OPERATOR CERTIFICATION

I hereby certify that the information herein is true and complete to the best of my knowledge and belief, and that this organization either owns a working interest or unleased mineral interest in the land including the proposed bottom hole location or has a right to drill this well at this location pursuant to a contract with an owner of such mineral or working interest, or to a voluntary pooling agreement or a compulsory pooling order heretofore entered by the division.

S. Mackay 8/6/2007
Signature Date

Sophie Mackay
Printed Name

SURVEYOR CERTIFICATION

I hereby certify that the well location shown on this plat was plotted from field notes of actual surveys made by me or under my supervision, and that the same is true and correct to the best of my belief.

APRIL 18, 2007
Date Surveyed JR
Signature & Seal of Professional Surveyor

Gary E. Eidsen 5/2/07
07.11.0512

Certificate No. GARY EIDSON 12641

DISTRICT I
1625 N. FRENCH DR., HOBBS, NM 88240

DISTRICT II
1301 W. GRAND AVENUE, ARTESIA, NM 88210

DISTRICT III
1000 Rio Brazos Rd., Aztec, NM 87410

DISTRICT IV
1220 S. ST. FRANCIS DR., SANTA FE, NM 87505

State of New Mexico
Energy, Minerals and Natural Resources Department

OIL CONSERVATION DIVISION
1220 SOUTH ST. FRANCIS DR.
Santa Fe, New Mexico 87505

Form C-102
Revised October 12, 2005
Submit to Appropriate District Office
State Lease - 4 Copies
Fee Lease - 3 Copies

WELL LOCATION AND ACREAGE DEDICATION PLAT

☐ AMENDED REPORT

API Number 30-025-38397	Pool Code 33250	Pool Name House; Drinkard
Property Code 303209	Property Name BLANKENSHIP	Well Number 4
OGRID No. 873	Operator Name APACHE CORPORATION	Elevation 3563'

Surface Location

UL or lot No. L	Section 12	Township 20-S	Range 38-E	Lot Idn	Feet from the 2310	North/South line SOUTH	Feet from the 990	East/West line WEST	County LEA
--------------------	---------------	------------------	---------------	---------	-----------------------	---------------------------	----------------------	------------------------	---------------

Bottom Hole Location If Different From Surface

UL or lot No.	Section	Township	Range	Lot Idn	Feet from the	North/South line	Feet from the	East/West line	County
---------------	---------	----------	-------	---------	---------------	------------------	---------------	----------------	--------

Dedicated Acres 40	Joint or Infill	Consolidation Code	Order No.
-----------------------	-----------------	--------------------	-----------

NO ALLOWABLE WILL BE ASSIGNED TO THIS COMPLETION UNTIL ALL INTERESTS HAVE BEEN CONSOLIDATED
OR A NON-STANDARD UNIT HAS BEEN APPROVED BY THE DIVISION

	<p>GEODETIC COORDINATES NAD 27 NME</p> <p>Y=579305.1 N X=877720.3 E</p> <p>LAT.=32.586630° N LONG.=103.107028° W</p> <p>LAT.=32°35'11.87" N LONG.=103°06'25.30" W</p>	<p>OPERATOR CERTIFICATION</p> <p>I hereby certify that the information herein is true and complete to the best of my knowledge and belief, and that this organization either owns a working interest or unleased mineral interest in the land including the proposed bottom hole location or has a right to drill this well at this location pursuant to a contract with an owner of such mineral or working interest, or to a voluntary pooling agreement or a compulsory pooling order heretofore entered by the division.</p> <p> 8/6/2007 Signature Date Sophie Mackay Printed Name</p>
		<p>SURVEYOR CERTIFICATION</p> <p>I hereby certify that the well location shown on this plat was plotted from field notes of actual surveys made by me or under my supervision, and that the same is true and correct to the best of my belief.</p> <p>Date Surveyed 5/2/07 Signature & Seal of Professional Surveyor 12641 07.11.0512</p> <p>Certificate No. GARY EIDSON 12641</p>