

District I  
1625 N French Dr., Hobbs, NM 88240  
District II  
1301 W Grand Avenue, Artesia, NM 88210  
District III  
1000 Rio Brazos Road, Aztec, NM 87410  
District IV  
1220 S St Francis Dr., Santa Fe, NM 87505

State of New Mexico  
Energy Minerals and Natural Resources

Form C-101  
May 27, 2004

Oil Conservation Division  
1220 South St. Francis Dr.  
Santa Fe, NM 87505

Submit to appropriate District Office

☒ AMENDED REPORT

**APPLICATION FOR PERMIT TO DRILL, RE-ENTER, DEEPEN, PLUGBACK, OR ADD A ZONE**

Operator Name and Address Forest Oil Permian Corp 707 17 <sup>th</sup> Street, Suite 3600, Denver Co 80202		<sup>2</sup> OGRID Number 33016
		<sup>3</sup> API Number 30-025-30854
<sup>5</sup> Property Code 28292	<sup>5</sup> Property Name Carter	<sup>6</sup> Well No 1
<sup>9</sup> Proposed Pool 1 Blinebry		<sup>10</sup> Proposed Pool 2

**7 Surface Location**

UL or lot no	Section	Township	Range		Feet from the	North/South line	Feet from the	East/West line	County
I	30	19S	39E		660	East	1980	South	Lea

**8 Proposed Bottom Hole Location If Different From Surface**

UL or lot no	Section	Township	Range	Lot Idn	Feet from the	North/South line	Feet from the	East/West line	County

**Additional Well Information**

<sup>11</sup> Work Type Code A	<sup>12</sup> Well Type Code O	<sup>13</sup> Cable/Rotary	<sup>14</sup> Lease Type Code S	<sup>15</sup> Ground Level Elevation 3,592'
<sup>16</sup> Multiple	<sup>17</sup> Proposed Depth 7,900' (Current)	<sup>18</sup> Formation Blinebry	<sup>19</sup> Contractor	<sup>20</sup> Spud Date ASAP
Depth to Groundwater		Distance from nearest fresh water well		Distance from nearest surface water
Pit: Liner: Synthetic <input type="checkbox"/> _____ mils thick Clay <input type="checkbox"/> Pit Volume: _____ bbls				
Drilling Method				
Closed-Loop System <input type="checkbox"/> Fresh Water <input checked="" type="checkbox"/> Brine <input type="checkbox"/> Diesel/Oil-based <input type="checkbox"/> Gas/Air <input type="checkbox"/>				

**21 Proposed Casing and Cement Program**

Hole Size	Casing Size	Casing weight/foot	Setting Depth	Sacks of Cement	Estimated TOC

<sup>22</sup> Describe the proposed program. If this application is to DEEPEN or PLUG BACK, give the data on the present productive zone and proposed new productive zone. Describe the blowout prevention program, if any. Use additional sheets if necessary.

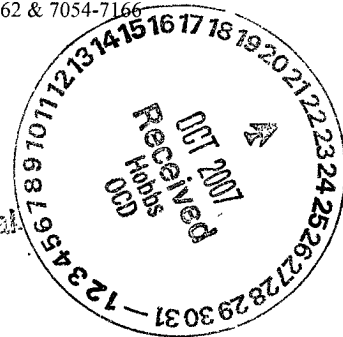
Currently in Nadine East Field, this well was recompleted in the Drinkard formation and commingled with the Abo. 7456-7562 & 7054-7166

Recomplete in Blinebry pool.

1. MIRU WO Unit, Pull CA.
2. Set RBP @ +/- 6900' and PT.
3. Perf Blinebry 6153-6176' OA
4. Run pkr on tbg & Acidize Blinebry, Swab Test
5. Pull pkr and san frac down csg. Flow back until dead
6. Clean out sand and retrieve RBP
7. GIH w/ CA and put on rod pump commingled w/ Abo
8. RDMO WO Unit.

Permit Expires 1 Year From Approval  
Date Unless Drilling Underway

Adding



<sup>23</sup> I hereby certify that the information given above is true and complete to the best of my knowledge and belief. I further certify that the drilling pit will be constructed according to NMOCD guidelines ☒ a general permit ☐ or an (attached) alternative OCD-approved plan ☐.

Printed name: Cindy Bush

Title: Sr. Regulatory Tech

Email address: cabush@forestoil.com

Date: 410-17-07

Phone: 303-812-1554

**OIL CONSERVATION DIVISION**

Approved by:

*Chris Williams*

Title: DISTRICT SUPERVISOR/GENERAL MANAGER

Approval Date:

NOV 14 2007

Expiration Date:

**Oil Conservation Division**

Conditions of approval: Approval for drilling ONLY  
-- CANNOT produce Downhole Commingled until  
DHC is approved in Santa Fe.

STATE OF NEW MEXICO  
ENERGY AND MINERALS DEPARTMENT

OIL CONSERVATION DIVISION

P. O. BOX 2088  
SANTA FE, NEW MEXICO 87501

VED

1990

Form C-102  
Revised 10-1-78

All distances must be from the outer boundaries of the Section.

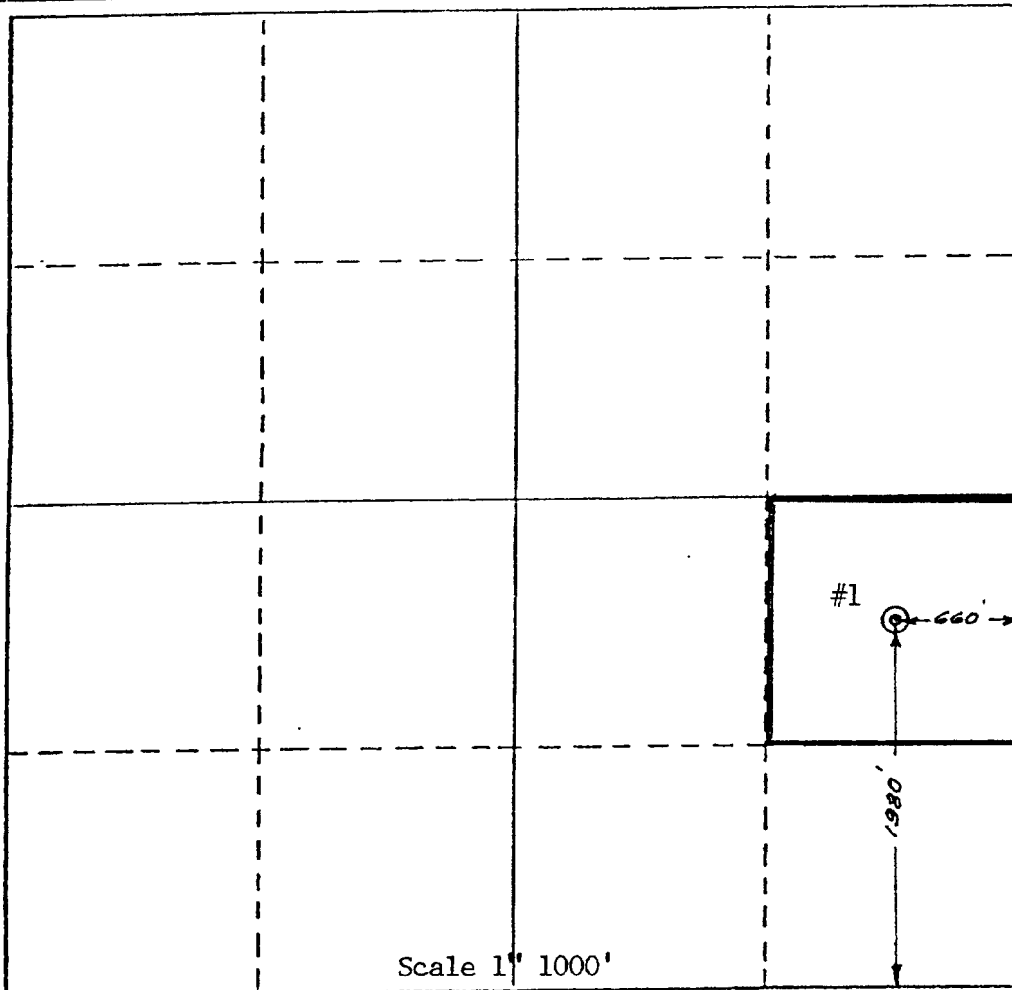
Operator <b>PETROLEUM TECHNICAL SERVICES COMPANY</b>			Lease <b>Carter</b>			Well No. <b>1</b>		
Unit Letter <b>I I</b>	Section <b>30</b>	Township <b>19-S</b>	Range <b>39-E</b>	County <b>Lea</b>				
Actual Footage Location of Well: <b>1980</b> feet from the <b>South</b> line and <b>660</b> feet from the <b>East</b> line								
Ground Level Elev. <b>3592.2</b>	Producing Formation <b>Abo, Drinkard</b>		Pool <b>Wildcat</b>			Dedicated Acreage: <b>40</b> Acres		

1. Outline the acreage dedicated to the subject well by colored pencil or hatchure marks on the plat below.
2. If more than one lease is dedicated to the well, outline each and identify the ownership thereof (both as to working interest and royalty).
3. If more than one lease of different ownership is dedicated to the well, have the interests of all owners been consolidated by communitization, unitization, force-pooling, etc?

☐ Yes ☐ No If answer is "yes," type of consolidation \_\_\_\_\_

If answer is "no," list the owners and tract descriptions which have actually been consolidated. (Use reverse side of this form if necessary.) \_\_\_\_\_

No allowable will be assigned to the well until all interests have been consolidated (by communitization, unitization, forced-pooling, or otherwise) or until a non-standard unit, eliminating such interests, has been approved by the Division



CERTIFICATION

I hereby certify that the information contained herein is true and complete to the best of my knowledge and belief.

*Don C. Bennett*

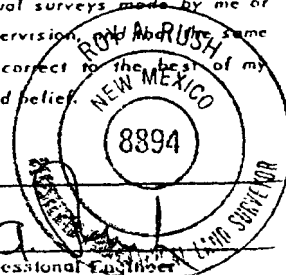
Name  
**Don C. Bennett**

Position  
**Owner/Operator**

Company  
**Petroleum Technical Services**

Date  
**03-27-90** Co.

I hereby certify that the well location shown on this plat was plotted from field notes of actual surveys made by me or under my supervision. The same is true and correct to the best of my knowledge and belief.



Date Surveyed

Registered Professional Engineer and/or Land Surveyor

**8894**

Certificate No.

0 330 660 990 1320 1650 1980 2310 2640 2970 3300 3630 3960 4290 4620 4950 5280 5610 5940 6270 6600