

Submit 3 Copies To Appropriate District
Office
District I
1625 N French Dr , Hobbs, NM 88240
District II
1301 W. Grand Ave., Artesia, NM 88210
District III
1000 Rio Brazos Rd , Aztec, NM 87410
District IV
1220 S. St Francis Dr., Santa Fe, NM
87505

State of New Mexico
Energy, Minerals and Natural Resources

Form C-103
May 27, 2004

OIL CONSERVATION DIVISION
1220 South St. Francis Dr.
Santa Fe, NM 87505

WELL API NO. 30-025-34419
5. Indicate Type of Lease STATE <input type="checkbox"/> FEE <input checked="" type="checkbox"/>
6. State Oil & Gas Lease No.
7. Lease Name or Unit Agreement Name L.G. WARLICK
8. Well Number 5
9. OGRID Number 241333
10. Pool name or Wildcat BLINEBRY

SUNDRY NOTICES AND REPORTS ON WELLS
(DO NOT USE THIS FORM FOR PROPOSALS TO DRILL OR TO DEEPEN OR PLUG BACK TO A
DIFFERENT RESERVOIR USE "APPLICATION FOR PERMIT" (FORM C-101) FOR SUCH
PROPOSALS)

1. Type of Well: Oil Well ☒ Gas Well ☐ Other

2. Name of Operator
CHEVRON MIDCONTINENT, L.P.

3. Address of Operator
15 SMITH ROAD, MIDLAND, TEXAS 79705

4. Well Location

Unit Letter O: 860 feet from the SOUTH line and 1650 feet from the EAST line

Section 18 Township 21S Range 37E NMPM County LEA

11. Elevation (Show whether DR, RKB, RT, GR, etc.)

Pit or Below-grade Tank Application ☐ or Closure ☐

Pit type _____ Depth to Groundwater _____ Distance from nearest fresh water well _____ Distance from nearest surface water _____

Pit Liner Thickness: _____ mil Below-Grade Tank: Volume _____ bbls; Construction Material _____

12. Check Appropriate Box to Indicate Nature of Notice, Report or Other Data

NOTICE OF INTENTION TO:

PERFORM REMEDIAL WORK ☐ PLUG AND ABANDON ☐

TEMPORARILY ABANDON ☐ CHANGE PLANS ☐

PULL OR ALTER CASING ☐ MULTIPLE COMPL ☐

OTHER: ☐

SUBSEQUENT REPORT OF:

REMEDIAL WORK ☐ ALTERING CASING ☐

COMMENCE DRILLING OPNS. ☐ P AND A ☐

CASING/CEMENT JOB ☐

OTHER: TA STATUS WITH CHART

13. Describe proposed or completed operations. (Clearly state all pertinent details, and give pertinent dates, including estimated date of starting any proposed work). SEE RULE 1103. For Multiple Completions: Attach wellbore diagram of proposed completion or recompletion.

11-20-07: SET CIBP @ 5430'. 35' CMT ON TOP. TEST CSG TO 520 PSI FOR 30 MINUTES.
(ORIGINAL CHART & COPY OF CHART ATTACHED).

WELL IS UNECONOMICAL TO PRODUCE.

WELL IS TEMPORARILY ABANDONED.

This Approval of Temporary
Abandonment Expires 11/20/12

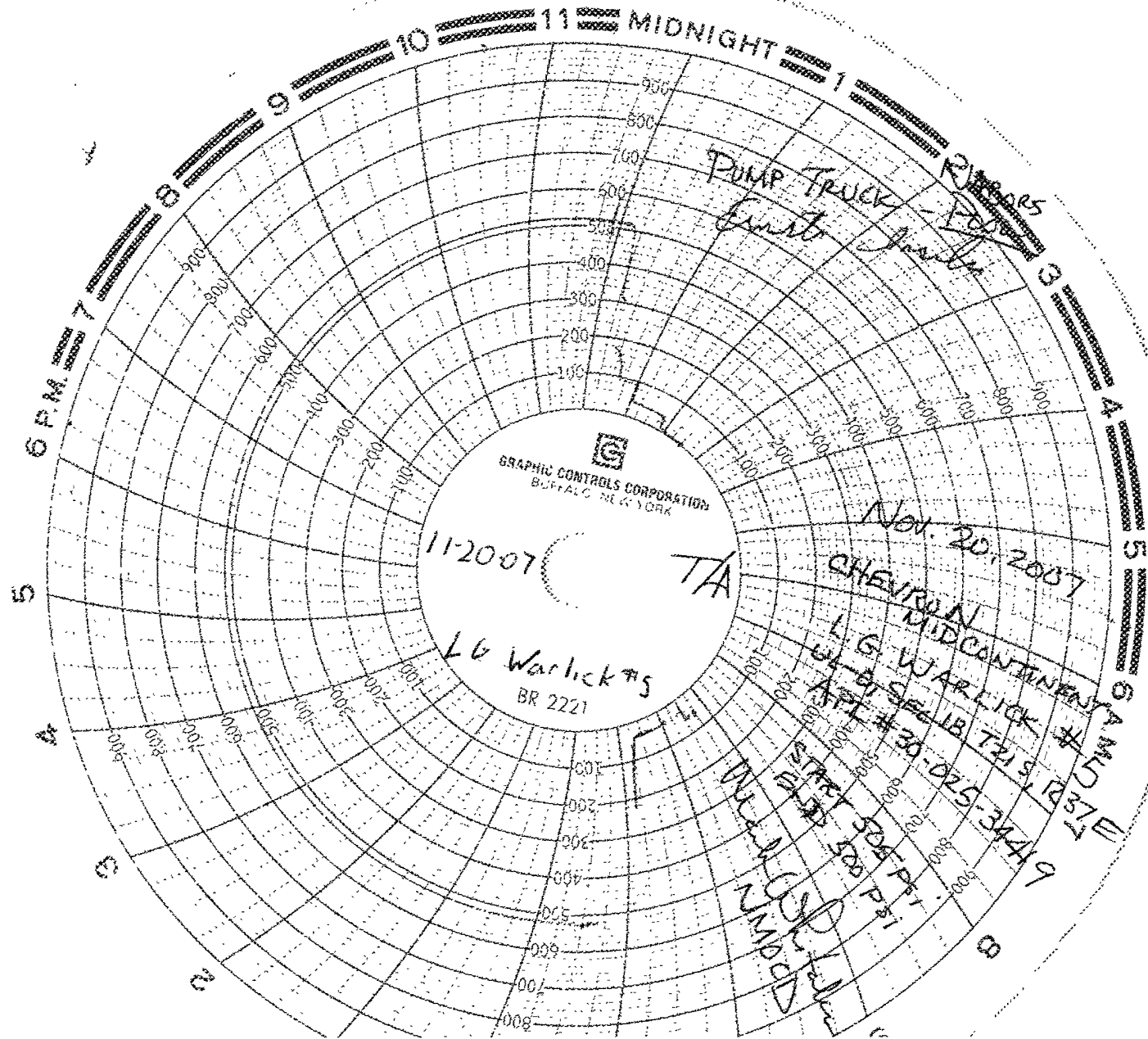
I hereby certify that the information above is true and complete to the best of my knowledge and belief. I further certify that any pit or below-grade tank has been/will be constructed or closed according to NMOCD guidelines ☐, a general permit ☐ or an (attached) alternative OCD-approved plan ☐.

SIGNATURE Denise Pinkerton TITLE Regulatory Specialist DATE 11-27-2007

Type or print name Denise Pinkerton E-mail address: leakejd@chevron.com Telephone No. 432-687-7375

For State Use Only

APPROVED BY: Henry W. Wank TITLE OC FIELD REPRESENTATIVE II/STAFF MANAGER DATE DEC 04 2007
Conditions of Approval (if any):



Well: **L. G. Warlick # 5**

Field: **Blinebry O&G**

Reservoir: **Blinebry**

Location:

860' FSL & 1650' FEL
Section: 18
Township: 21S
Range: 37E
County: Lea State: NM

Elevations:

GL: 3513'
KB: 3525'
DF: 3524'

This wellbore diagram is based on the most recent information regarding wellbore configuration and equipment that could be found in the Midland Office well files and computer databases as of the update date below. Verify what is in the hole with the well file in the Eunice Field Office. Discuss w/ WEO Engineer, WO Rep, OS, ALS, & FS prior to rigging up on well regarding any hazards or unknown issues pertaining to the well.

CIBP @ 5430'
(35' cmt on top)

Tubing Detail:

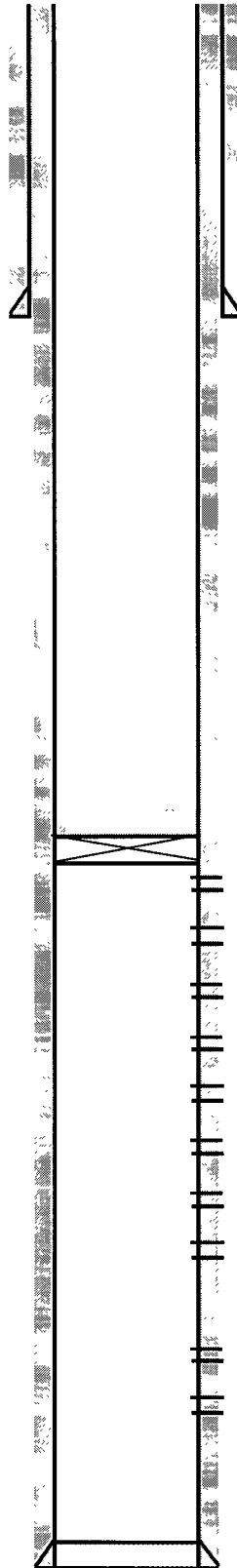
<u>#Jts:</u>	<u>Size:</u>	<u>Footage</u>
	KB Correction	12.00
None		

0 Bottom Of String >> 12.00

COTD: 5385'
PBTD: 5385'
TD: 6139'

Updated: 11/20/07

Current
Wellbore Diagram



Well ID Info:

Chevno: BT5485
API No: 30-025-34419
L5/L6: BCU46AE00
Spud Date: 6/11/98
Compl. Date: 6/26/98

Surface Csg: 8 5/8", 24#, J-55
Set: @ 1220' w/ 555 sks
Hole Size: 11"
Circ: Yes TOC: Surface
TOC By: Circulated

Perfs

5452-60'	Blinebry - Open
5467-71'	Blinebry - Open
5477-85'	Blinebry - Open
5491-99'	Blinebry - Open
5506-10'	Blinebry - Open
5517-27'	Blinebry - Open
5531-37'	Blinebry - Open
5541-49'	Blinebry - Open
5554-56'	Blinebry - Open
5560-68'	Blinebry - Open
5574-82'	Blinebry - Open
5588-92'	Blinebry - Open
5600-06'	Blinebry - Open
5612-20'	Blinebry - Open
5627-33'	Blinebry - Open
5640-48'	Blinebry - Open
5657-65'	Blinebry - Open
5676-80'	Blinebry - Open
5688-94'	Blinebry - Open
5700-08'	Blinebry - Open
5712-16'	Blinebry - Open
5720-26'	Blinebry - Open
5741-47'	Blinebry - Open
5756-62'	Blinebry - Open
5765-73'	Blinebry - Open
5791-95'	Blinebry - Open
5806-13'	Blinebry - Open
5826-34'	Blinebry - Open
5848-54'	Blinebry - Open
5864-71'	Blinebry - Open
5878-82'	Blinebry - Open
5886-90'	Blinebry - Open
5986-92'	Blinebry - Open
6004-10'	Blinebry - Open

Status:

Prod. Csg: 5 1/2" 17#, J-55
Set: @ 6139' w/ 1010 sks
Hole Size: 7 7/8"
Circ: No TOC: Surface
TOC By: Calculated

By: LGEK