

District I  
1625 N. French Dr., Hobbs, NM 88240  
District II  
1301 W. Grand Avenue, Artesia, NM 88210  
District III  
1000 Rio Brazos Road, Aztec, NM 87410  
District IV  
1220 S. St. Francis Dr., Santa Fe, NM 87505

State of New Mexico  
Energy Minerals and Natural Resources

Form C-101  
May 27, 2004

Oil Conservation Division  
1220 South St. Francis Dr.  
Santa Fe, NM 87505

Submit to appropriate District Office

☐ AMENDED REPORT

**APPLICATION FOR PERMIT TO DRILL, RE-ENTER, DEEPEN, PLUGBACK, OR ADD A ZONE**

<sup>1</sup> Operator Name and Address BTA Oil Producers 104 S. Pecos Midland, TX 79701		<sup>2</sup> OGRID Number 003002
<sup>3</sup> Property Code 002314	<sup>5</sup> Property Name Gem, 8705 JV-P	<sup>4</sup> API Number 30 - 025-31318
<sup>9</sup> Proposed Pool 1 Teas Penn		<sup>6</sup> Well No. 006
<sup>10</sup> Proposed Pool 2		

**7 Surface Location**

UL or lot no. K	Section 2	Township 20S	Range 33E	Lot Idn	Feet from the 1980	North/South line S	Feet from the 1980	East/West line W	County Lea
--------------------	--------------	-----------------	--------------	---------	-----------------------	-----------------------	-----------------------	---------------------	---------------

**8 Proposed Bottom Hole Location If Different From Surface**

UL or lot no.	Section	Township	Range	Lot Idn	Feet from the	North/South line	Feet from the	East/West line	County
---------------	---------	----------	-------	---------	---------------	------------------	---------------	----------------	--------

**Additional Well Information**

<sup>11</sup> Work Type Code PB	<sup>12</sup> Well Type Code Gas	<sup>13</sup> Cable/Rotary	<sup>14</sup> Lease Type Code S	<sup>15</sup> Ground Level Elevation 3579' GR
<sup>16</sup> Multiple N	<sup>17</sup> Proposed Depth 13640'	<sup>18</sup> Formation Atoka	<sup>19</sup> Contractor	<sup>20</sup> Spud Date ASAP
Depth to Groundwater 325'		Distance from nearest fresh water well >1000'		Distance from nearest surface water >1000'
Pit: Liner: Synthetic <input type="checkbox"/> _____ mils thick Clay <input type="checkbox"/> Pit Volume: _____ bbls Drilling Method: Closed-Loop System <input type="checkbox"/> Fresh Water <input type="checkbox"/> Brine <input type="checkbox"/> Diesel/Oil-based <input type="checkbox"/> Gas/Air <input type="checkbox"/>				

**21 Proposed Casing and Cement Program**

Hole Size	Casing Size	Casing weight/foot	Setting Depth	Sacks of Cement	Estimated TOC
26"	20"	94 & 106.5	1385'	2200	Surf
17-1/2"	13-3/8"	68	3116'	2200	Surf
11"	8-5/8"	32	5490'	1700	4090'
7-7/8"	5-1/2"	20	13640'	2600	Surf

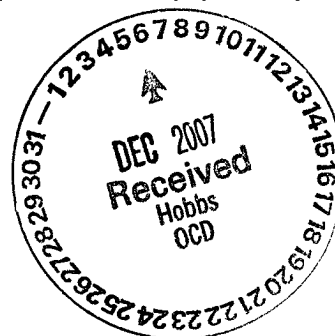
<sup>22</sup> Describe the proposed program. If this application is to DEEPEN or PLUG BACK, give the data on the present productive zone and proposed new productive zone. Describe the blowout prevention program, if any. Use additional sheets if necessary.

BTA proposes to plug back and test the Atoka formation in this well.

See Attached Procedure

There will be no pit on location. There will be a steel tank on location for this purpose.

Permit Expires 1 Year From Approval  
Date Unless Drilling Underway  
Plugback



<sup>23</sup> I hereby certify that the information given above is true and complete to the best of my knowledge and belief. I further certify that the drilling pit will be constructed according to NMOCD guidelines <input type="checkbox"/> , a general permit <input type="checkbox"/> , or an (attached) alternative OCD approved plan <input type="checkbox"/> .		OIL CONSERVATION DIVISION	
Signature: <i>Pam Inskeep</i>		Approved by: <i>Hayward Wink</i>	
Printed name: Pam Inskeep		Title: <i>OC FIELD REPRESENTATIVE / DISTRICT MANAGER</i>	
Title: Regulatory Administrator		Approval Date: DEC 07 2007 Expiration Date:	
E-mail Address: pinskeep@btaoil.com			
Date: 12/03/07	Phone: 432-682-3753	Conditions of Approval Attached <input type="checkbox"/>	

Attachment to C-101  
dated 12/03/2007

BTA Oil Producers  
8705 JV-P Gem No.6  
30 – 025-31318  
Plug Back and Test Atoka  
Quail Ridge-Atoka Gas  
Lea County, NM

BTA proposes to plug back and test the Atoka formation as follows:

1. MI & RU CU. ND WH, NU BOP. Rel pkr, POH w/prod equipment.
2. RU WL. PU CIBP for 5-1/2" 20# & 23# csg. RIH. Set CIBP @  $\pm 13080'$ . Cap w/40' cmt.
3. RIH w/tbg to 12716'. Load w/10 ppg brine wtr and circ bottoms up. POH w/tbg.
4. PU 5-1/2" pkr w/muleshoe joint on bttm. RIH on 2-7/8" 6.5# N80 tbg. Press test in hole to 8000 psi above slips.
5. Set pkr @  $\pm 12660'$ . Press tst pkr to 1000 psi.
6. RU to perf. RIH w/gamma gun log from 12660-800'. Correlate. Perf w/2-1/8" decentralized prem charges at 12710-716' w/2 JSPF.
7. Open well and flow test.
8. If well is commercial, RD and hook-up for production.

Attachment to C-101  
dated 12/03/2007

**CURRENT WELLBORE**  
**8705 JV-P GEM # 6** 30-015-31318  
**1980' FSL & 1980' FWL, SECTION 2, T20S, R33E**  
**GEM (MORROW) FIELD**  
**LEA COUNTY, NEW MEXICO**  
**ELEV 3593' KB, 3579' GL**

**DRILLING OPERATIONS**

8/5/1991 Spud 26" hole, set 20" csg @ 1385' w/ 2200 sx, circ (K55 BTC, 106 5# & 133#) Drlg 17 1/2" hole.

8/17/1991 Set 13 3/8" @ 3116' w/ 2200 sx Circ (68# K55 STC)

8/26/1991 Set 8 5/8" @ 5490' w/ 1700 sx TOC 4090' (ts) (32# STC)

9/20/1991 Drlg 7 7/8" hole @ 12,717', lost circ. RIH w/ pkr, Hole in 8 5/8" csg @ 2893'-909' Sqzd w/ 1300 sx

10/11/1991 Set 5 1/2" @ 13,640' w/ 2600 sx. Circ PBDT 13,540' (20# & 23# N80 LTC)

**COMPLETION OPERATIONS**

10/15/1991 Perf Morrow "A" 13,116'-126', 2 JSPF (21 holes) w/ 2" thru tbg gun

10/19/1991 Acidize w/ 3000 gals 7 5% MSA & 15 BS & 1000 scf N2/bbl Swabbed Sep rate, 306 MCFPD, 115# FTP Ran BHP BHP @ 13,121' = 2759#

10/29/1991 Perf Morrow "C" 13,492'-98', 13,501'-03', 13,514'-20' w/ 2 JSPF, 2 1/8" thru tbg gun Flwd 5 hrs, rec 10 BO, 15 BW, gas rate 750 MCFPD, 150# FTP on 16/64" chk

11/9/1991 IP Flwg 727 MCFPD w/ 100# FTP on 48/64" chk, rec 18 BO, 75 BW

**WORKOVER OPERATIONS**

12/15/1993 Set CIBP @ 13,430' Cap w/ 30' cmt

12/16/1993 Perf Morrow "B" 13,246'-316' KO Flwg 434 MCFPD, 33 BO, 6 BW, 100# FTP on 1" choke.

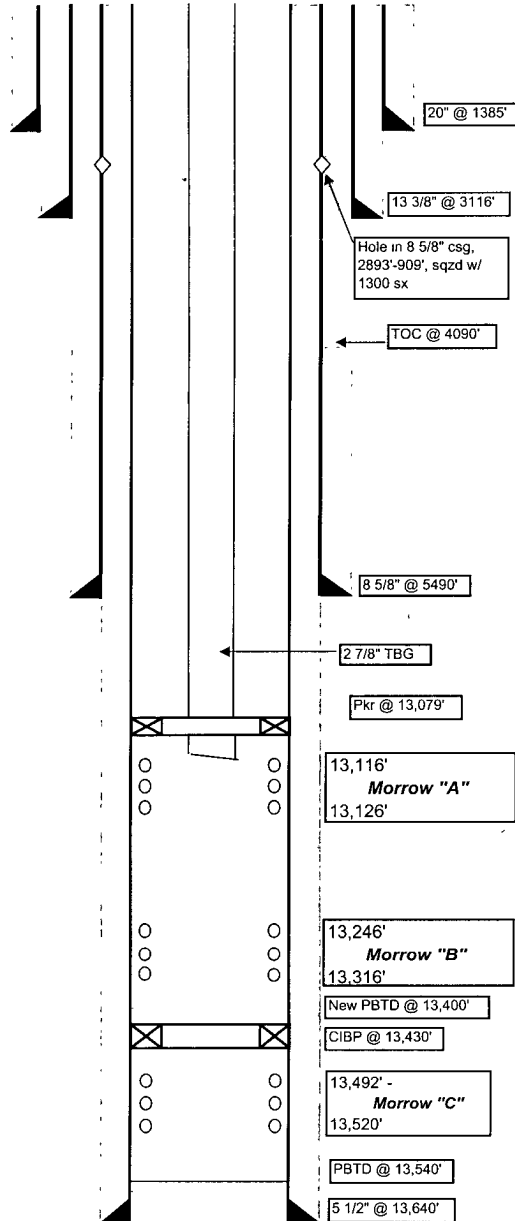
**TUBING & PACKER DETAIL**

Packer. Arrowset II fullbore, 7" @ 13,079'

Balance. 398 jts 2 7/8" 6.5# N80 AB-Mod tbg.

**CURRENT PRODUCTION**

11/27/07 - 6 MCFPD, 0 BOPD, 0 BWPD, 35# FTP



District I  
1625 N. French Dr., Hobbs, NM 88240  
District II  
1301 W. Grand Avenue, Artesia, NM 88210  
District III  
1000 Rio Brazos Rd., Aztec, NM 87410  
District IV  
1220 S. St. Francis Dr., Santa Fe, NM 87505

State of New Mexico  
Energy, Minerals & Natural Resources Department  
OIL CONSERVATION DIVISION  
1220 South St. Francis Dr.  
Santa Fe, NM 87505

Form C-102  
Revised October 12, 2005  
Submit to Appropriate District Office  
State Lease - 4 Copies  
Fee Lease - 3 Copies

☐ AMENDED REPORT

WELL LOCATION AND ACREAGE DEDICATION PLAT

<sup>1</sup> API Number 30-015-31318	<sup>2</sup> Pool Code <del>83200</del> 86040 Teas Penn	<sup>3</sup> Pool Name <del>Quail Ridge - Atoka Gas</del>
<sup>4</sup> Property Code 002314	<sup>5</sup> Property Name Gem, 8705 JV-P	<sup>6</sup> Well Number 6
<sup>7</sup> OGRID No. 003002	<sup>8</sup> Operator Name BTA Oil Producers	<sup>9</sup> Elevation 3579'

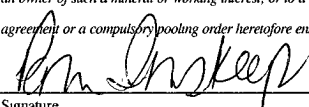
<sup>10</sup> Surface Location

UL or lot no. K	Section 2	Township 20S	Range 33E	Lot Idn	Feet from the 1980	North/South line S	Feet from the 1980	East/West line W	County Lea
--------------------	--------------	-----------------	--------------	---------	-----------------------	-----------------------	-----------------------	---------------------	---------------

<sup>11</sup> Bottom Hole Location If Different From Surface

UL or lot no.	Section	Township	Range	Lot Idn	Feet from the	North/South line	Feet from the	East/West line	County
<sup>12</sup> Dedicated Acres 320	<sup>13</sup> Joint or Infill	<sup>14</sup> Consolidation Code	<sup>15</sup> Order No.						

No allowable will be assigned to this completion until all interests have been consolidated or a non-standard unit has been approved by the division.

				<p><sup>17</sup> <b>OPERATOR CERTIFICATION</b></p> <p>I hereby certify that the information contained herein is true and complete to the best of my knowledge and belief, and that this organization either owns a working interest or unleased mineral interest in the land including the proposed bottom hole location or has a right to drill this well at this location pursuant to a contract with an owner of such a mineral or working interest, or to a voluntary pooling agreement or a compulsory pooling order heretofore entered by the division</p> <p> 12/03/2007</p> <p>Signature Date</p> <p>Pam Inskeep, Regulatory Administrator</p> <p>Printed Name</p>
				<p><sup>18</sup> <b>SURVEYOR CERTIFICATION</b></p> <p>I hereby certify that the well location shown on this plat was plotted from field notes of actual surveys made by me or under my supervision, and that the same is true and correct to the best of my belief.</p> <p>07/26/1991</p> <p>Date of Survey</p> <p>Signature and Seal of Professional Surveyor:</p> <p>Max A. Schumann, Jr. 1510</p> <p>Certificate Number</p>