

Submit 3 Copies To Appropriate District
Office
District I
1625 N. French Dr., Hobbs, NM 87240
District II
1301 W. Grand Ave., Artesia, NM 88210
District III
1005 N. Brazos Rd., Aztec, NM 87410
District IV
1220 S. St. Francis Dr., Santa Fe, NM 87505

State of New Mexico
Energy, Minerals and Natural Resources

Form C-103
May 27, 2004

OIL CONSERVATION DIVISION
1220 South St. Francis Dr.
Santa Fe, NM 87505

| |
|---|
| WELL API NO. 30-025-29385 |
| 5. Indicate Type of Lease STATE <input checked="" type="checkbox"/> FEE <input type="checkbox"/> |
| 6. State Oil & Gas Lease No. |

SUNDRY NOTICES AND REPORTS ON WELLS

(DO NOT USE THIS FORM FOR PROPOSALS TO DRILL OR TO DEEPEN OR PLUG BACK TO A DIFFERENT RESERVOIR. USE "APPLICATION FOR PERMIT" (FORM C-101) FOR SUCH PROPOSALS.)

| | |
|---|---|
| 1. Type of Well: Oil Well <input checked="" type="checkbox"/> Gas Well <input type="checkbox"/> Other | 7. Lease Name or Unit Agreement Name: North Vacuum ABO East Unit |
| 2. Name of Operator XTO Energy, Inc. | 8. Well Number 14 |
| 3. Address of Operator 200 N. Loraine, Ste. 800 Midland, TX 79701 | 9. OGRID Number 005380 |
| 4. Well Location Unit Letter M : 659 feet from the West line and 542 feet from the South line Section 7 Township 17S Range 35E NMPM County Lea | 10. Pool name or Wildcat Vacuum, ABO, North |
| 11. Elevation (Show whether DR, RKB, RT, GR, etc.) | |
| Pit or Below-grade Tank Application <input type="checkbox"/> or Closure <input type="checkbox"/> Pit type _____ Depth to Groundwater _____ Distance from nearest fresh water well _____ Distance from nearest surface water _____ Pit Liner Thickness: _____ mil Below-Grade Tank: Volume _____ bbls; Construction Material _____ | |

12. Check Appropriate Box to Indicate Nature of Notice, Report, or Other Data

NOTICE OF INTENTION TO:

PERFORM REMEDIAL WORK ☐ PLUG AND ABANDON ☐
TEMPORARILY ABANDON ☐ CHANGE PLANS ☐
PULL OR ALTER CASING ☐ MULTIPLE COMPLETION ☐
OTHER: ☐

SUBSEQUENT REPORT OF:

REMEDIAL WORK ☐ ALTERING CASING ☐
COMMENCE DRILLING OPNS. ☐ PLUG AND ABANDONMENT ☐
CASING TEST AND CEMENT JOB ☐
OTHER: OAP, Stimulate & TA ☒

13. Describe proposed or completed operations. (Clearly state all pertinent details, and give pertinent dates, including estimated date of starting any proposed work). SEE RULE 1103. For Multiple Completions: Attach wellbore diagram of proposed completion or recompletion.

In order to retain wellbore for possible lateral potential, XTO would like to request permission to TA well.

See attached procedure.

This Approval of Temporary
Abandonment Expires 1/7/2013

I hereby certify that the information above is true and complete to the best of my knowledge and belief. I further certify that any pit or below-grade tank has been/will be constructed or closed according to NMOCD guidelines ☐ , a general permit ☐ or an (attached) alternative OCD-approved plan ☐

SIGNATURE Sherry Pack TITLE Regulatory Analyst DATE 1/7/08
E-mail address: sherry_pack@xtoenergy.com
Type or print name Sherry Pack Telephone No. 432.620.6709

For State Use Only

APPROVED BY Chris Williams TITLE OC DISTRICT SUPERVISOR/GENERAL MANAGER DATE JAN 17 2008
Conditions of Approval, if any:

NORTH VACUUM ABO EAST UNIT #14

API # 30-025-29385

OAP, Stimulate, RWTP

Form C-103 cont'd

- 3/6/07** RU MacLaskey pmp trk. Press up on TCA to 500 psig. RU Key (Louis) PU
- 3/7/07** RU Smith International Rev Unit. PU & RIH w/4-3/4" bit, 6 - 3-1/2" DC, 260 jts of 2-7/8" 6.5#, EUE, 8rd, L-80, J-55 tbg. Tag up @ 8,560.
- 3/8/07** DO cmt fr 8,560' to 8,552'. DO on CIBP @ 8,582' for 3 hrs. Pushed plug dwn to 8,748'.
- 3/9/07** RIH w/GR-Prode log & wire line. Tag @ 8,727'. RIH w/4-3/4" bit, 6 - 3-1/2" DC & 230 jts of 2-7/8" tbg.
- 3/10/07** RIH w/4-3/4" bit, 6 - 3-1/2" DC, 273 jts of 2-7/8". Tag @ 8,748'. DO fr 8,748' to 8,773'. Circ well clean
- 3/13/07** Perf's Abo fr 8,695' to 8,747',(34', 102 holes)w/3 JSPF. RIH w/5-1/2" prk & 277 jts of 2-7/8 tbg to 8,668.
- 3/14/07** POOH w/4 jts to 8,738'. Acidize Abo perfs fr 8,613' to 8,747'. Spotted 150 gals of 20% NEFE acid @ 8,738'. Rate 1.8 BPM, 250 psig. Flush w/49.6 bbls of 2% KCL wtr. LD 2 jts of 2-7/8" tbg. Set pkr @ 8,675'. Pmpd 2% KCL @ 2.5 BPM, 1,100 psig. Rel pkr & POOH LD 6 jts of 2-7/8" tbg. Set pkr @ 8,436'. Pmp 5,000 20% NEFE while dropping 153 - 1.3 SGBS in last 4,000 gals of acid. (6 SGBS every 138.6 gals of acid). Flow back well on 8/64 choke. Flow back 98 bbls of wtr in 4:00 hrs
- 3/15/07** Tbg press 1,200 psig. Flow back 15 bbls of wtr in 1-1/2 hrs. BFL 1,200'. EFL 6,500'. Swab back a total of 134 bbls in 23 runs
- 3/16/07** Tbg press 200 psig. BFL 2,800'. EFL 6,800'. Swab back a total of 109 bbls in 20 runs. (trace of oil)
- 3/17/07** Perf's Abo fr 8,612 - 8,669',(29', 58 holes) w/2 JSPF. RIH w/5-1/2" RBP, ball catcher, 5-1/2" prk & 269 jts of 2-7/8" tbg. Set RBP @ 8,682'. POOH w/6 jts of 2-7/8" tbg. Set pkr @ 8,487'. Pmp 3 bbls of 2% KCL wtr dwn csg.
- 3/20/07** Acidize Abo perfs fr 8,612 - 8,670', w/2,000 gals of acid & 12,000 gals of 20% NEFE Ultra Gel while dropping 40 - 1.3 SGBS after the 6,000 gals of Gel & 40 more 1.3 SGBS at 9,000 of Gel. Flow back through 8/64 choke. Flow back a total of 95 bbls of wtr in 2 hrs.

NORTH VACUUM ABO EAST UNIT #14

API # 30-025-29385

OAP, Stimulate, RWTP

Form C-103 cont'd

- 3/21/07** Tbg press 1,300 psig. Flow back 47 bbls of wtr in 3 hrs. Swabbed a total of 118 bbls of wtr in 17 runs. Started swabbing fr surface to 3,000'. Total of 165 bbls of wtr recovered.
- 3/22/07** Tbg press 300 psig. Swabbed a total of 75 bbls of wtr in 14 runs. Started swabbing fr 1,000' to 4,500'. RIH w/6 jts of 2-7/8" latch onto RBP. Rel RBP. POOH LD 2-7/8" N-80 WS
- 3/23/07** RIH w/2-7/8" BP, 1 jt of 2-7/8" 6.5#, EUE, 8rd, J-55 MAJ, 2-7/8" PS, 2-7/8" SN, 1 jt of 2-7/8" 6.5#, EUE, 8rd, J-55 IPC tbg, 4 jts of 2-7/8" 6.5#, EUE, 8rd, J-55 tbg, 2-7/8" x 5-1/2" TAC, 171 jts of 2-7/8" 6.5#, EUE, 8rd, J-55 tbg.
- 3/24/07** RIH w/99 jts of 2-7/8" 6.5#, EUE, 8rd, J-55 tbg. ND BOP. Set TAC w/14 pts tens. PU RIH w/1-1/4" x 12' gas anchor, 2.5 x 1.5 - RXBC -24' - 4' pmp. (SN# DC-1351), 1" x 4' guide sub, 8 - 1-1/2" K-Bars, 113 - 3/4" D-78 sucker rods.
- 3/27/07** PU RIH w/122 - 7/8" D-78 sucker rods, 102 - 1" D-78 sucker rods, 1" x 8', 6', 4', 2' rod subs, 1-1/2" x 26' PR.
- 12/7/07** MIRU PU. (KEY WS, Luis). Attempt to unset pmp. Backoff rods. POOH w/rods.
- 12/8/07** RU swab. Swabbed fluid dwn in tbg. RD swab.
- 12/9/07** Strip out hole w/tbg & rods. LD TAC & stuck pmp.
- 12/11/07** RIH w/5-1/2 CIBP & WL. Set CIBP @ 8,580. Perf'd ABO fr 8,490' - 8,500', (10', 10 shots), 8,466' - 8,470' (4' 4 shots. RIH w/5-1/2" pkr & 269 jts of 2-7/8" 6.5#, J-55, EUE, 8rd tbg tstg tbg to 5,000 psig below slips. Set pkr @ 8,531'. Attempt to L & T CIBP w/30 bbls of 2% KCL to 5,000 psig.. RIH w/1 jt of 2-7/8" tbg. Set pkr @ 8,562'. Attempt to L & T CIBP w/27 bbls of 2% KCL to 5,000 psig. PUH & Set pkr @ 8,340'. L & T TCA w/217 bbls of 2% KCL to 500 psig.
- 12/12/07** RIH w/7 jts of 2-7/8" 6.5#, J-55, EUE, 8rd tbg. Set pkr @ 8,562'. L & T TCA w/96 bbls of 2% KCL to 200 psig. Attempt L & T CIBP w/42 bbls of 2% KCL to 5,000 psig. RIH & Tag CIBP @ 8,580'. PUH & Set pkr @ 8,562'. Attempt L & T CIBP w/40 bbls of 2% KCL to 5,000 psig. RIH w/5-1/2 CIBP & WL. Set CIBP @ 8,565'. RIH w/Redressed 5-1/2" pkr & 270 jts of 2-7/8" 6.5#, J-55, EUE, 8rd tbg. Attempt to set pkr @ 8,531', 8,562' & 8,340'.
- 12/13/07** RIH w/Redressed 5-1/2" pkr & 270 jts of 2-7/8" 6.5#, J-55, EUE, 8rd tbg. Set pkr @ 8,562'. L & T CIBP w/5 bbls of 2% KCL dwn tbg to 5,000 psig. PUH & Set pkr @ 8,340'. L & T TCA w/45 bbls of 2% KCL to 500 psig. Acidize Abo perf's fr 8,466' - 8,500', w/4,500 gals 20% NEFE acid dropping 14 - 1.3 SGBS in the

NORTH VACUUM ABO EAST UNIT #14

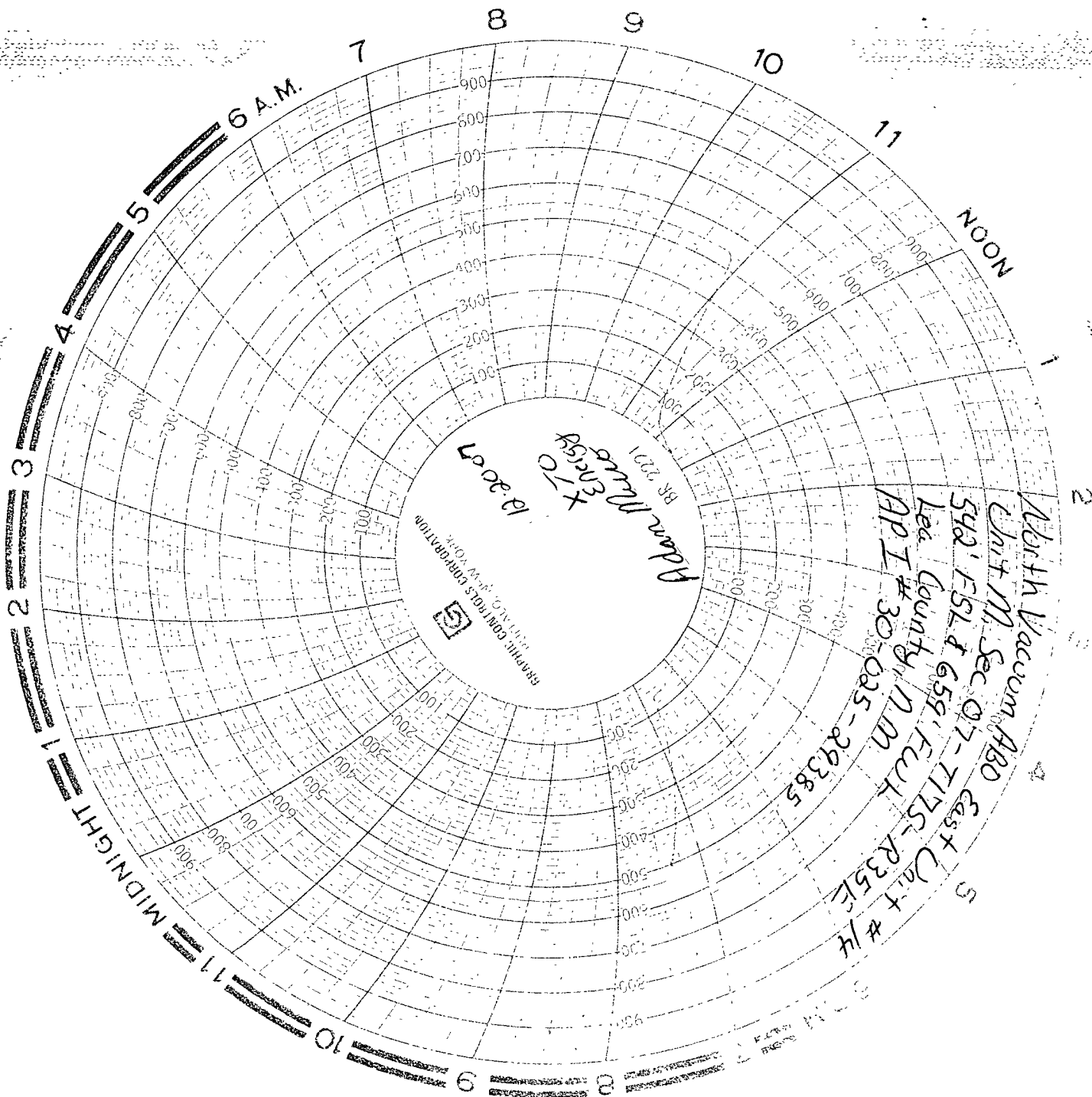
API # 30-025-29385

OAP, Stimulate, RWTP

Form C-103 cont'd

last 2,500 gals of acid. Attempt to Est IR w/2% KCL wtr. Spotted 100 gals of acid over perms. Rev 2.2 bbls of 2% KCL wtr dwn TCA. Reset pkr. Est IR @ 2.1 BPM, 4,607 psig. Pmpd 4,116 gals of acid @ 2.1 BPM, 4,630 psig. Circ well w/310 bbls of 2% KCL.

- 12/14/07** POOH w/tbg. RIH w/4-3/4" bit, 4-3/4" scrapper & 270 jts of 2-7/8" tbg. Tag @ 8,565'. POOH w/tbg.
- 12/15/07** RIH w/5-1/2" pkr & 263 jts of 2-7/8" 6.5#, J-55, EUE, 8rd tbg. Tstd tbg to 5,500 psig below slip. Set pkr @ 8,341'. Attempt to L & T TCA to 500 psig. PUH L & T TCA @ 8,295', 8,310' & 8,325'. Set pkr @ 8,310'. Swabbed perms 8,500'- 8,466'. BFL surface. EFL 6,300'. Made 10 swab runs in 3.0 hrs. Rec 60 bbls of wtr.
- 12/18/07** Made 1 swab run. BFL @ 6,200'. Rec 4 bbls of wtr. L & T held good. RU Petroplex Acidizing to tbg. Tstd lines to 6,000 psig. Acidize Abo perf's fr 8,466' - 8,500'. W/4,500 gals of 20% NEFE acid dropping 14 1.3 s.g. balls after 2000 gals of acid. No increase in press. Flushed w/55 bbls of wtr. Average treating rate 3.2 BPM @ 4,700 psi. ISIP 4500 psig. Shut well in for 1 hr. 4250 psig on tbg. Opened well on 8/64" choke. Flowed back a total of 104 BOW. BFL @ 1,100 FFS. Made 3 runs. Rec 22 BOW. EFL @ 3,500 FS. RD
- 12/19/07** 400 psig on tbg) Bled well dwn. First run BFL @ 3,000' FFS. Made a total of 12 runs. Rec 49 BW. EFL @ 8,000' FFS. RD swab.
- 12/20/07** PU RIH w/CIBP & 264 jts of 2-7/8" 6.5#, J-55, EUE, 8rd tbg. Set CIPB @ 8,310'.
- 12/21/07** POOH LD rods 103 - 3/4" D-78, 122 - 7/8" D-78 & 113 - 1" D-78. Circ 357 bbls of 1% pkr fluid. Press tst TCA. 500 psig for 30 min.
- 12/22/07** LD 264 Jts of 2-7/8" 6.5#, J-55, EUE, 8rd tbg. RDMO. TA.



D K S/P HES
12/20/07 M&S Pmp Truck #17
Calibration Date (24 hr Chart)
11-09-07

REC'D MIDLAND
JAN 03 2008