

District I

1625 N. French Dr., Hobbs, NM 88240
Phone:(505) 393-6161 Fax:(505) 393-0720

District II

1301 W. Grand Ave., Artesia, NM 88210
Phone:(505) 748-1283 Fax:(505) 748-9720

District III

1000 Rio Brazos Rd., Aztec, NM 87410
Phone:(505) 334-6178 Fax:(505) 334-6170

District IV

1220 S. St Francis Dr., Santa Fe, NM 87505
Phone:(505) 476-3470 Fax:(505) 476-3462

State of New Mexico
Energy, Minerals and Natural Resources

Oil Conservation Division

1220 S. St Francis Dr.

Santa Fe, NM 87505

Form C-103
Permit 67796

SUNDRY NOTICES AND REPORTS ON WELLS (DO NOT USE THIS FORM FOR PROPOSALS TO DRILL OR TO DEEPEN OR PLUG BACK TO A DIFFERENT RESERVOIR. USE "APPLICATION FOR PERMIT" (FORM C-101) FOR SUCH PROPOSALS.)		WELL API NUMBER 30-025-38500 ✓
1. Type of Well: O		5. Indicate Type of Lease P
2. Name of Operator APACHE CORP		6. State Oil & Gas Lease No.
3. Address of Operator 6120 S. YALE, SUITE 1500 TULSA, OK 74136		7. Lease Name or Unit Agreement Name EAST BLINEBRY DRINKARD UNIT ✓
4. Well Location Unit Letter N : 1120 feet from the S line and 1550 feet from the W line Section 12 Township 21S Range 37E NMPM Lea County		8. Well Number 068 ✓
11. Elevation (Show whether DR, KB, BT, GR, etc.) 3444 GR		9. OGRID Number 873 ✓
Pit or Below-grade Tank Application <input type="checkbox"/> or Closure <input type="checkbox"/> Pit Type _____ Depth to Groundwater _____ Distance from nearest fresh water well _____ Distance from nearest surface water _____ Pit Liner Thickness: _____ mil Below-Grade Tank: Volume _____ bbls; Construction Material _____		10. Pool name or Wildcat

12. Check Appropriate Box to Indicate Nature of Notice, Report or Other Data

NOTICE OF INTENTION TO:

PERFORM REMEDIAL WORK ☐ PLUG AND ABANDON ☐TEMPORARILY ABANDON ☐ CHANGE OF PLANS ☐PULL OR ALTER CASING ☐ MULTIPLE COMPL ☐

Other:

SUBSEQUENT REPORT OF:

REMEDIAL WORK ☐ ALTER CASING ☐COMMENCE DRILLING OPNS. ☐ PLUG AND ABANDON ☐CASING/CEMENT JOB ☐Other: Drilling/Cement ☒

13. Describe proposed or completed operations. (Clearly state all pertinent details, and give pertinent dates, including estimated date of starting any proposed work.) SEE RULE 1103. For Multiple Completions: Attach wellbore diagram of proposed completion or recompletion.
 AMEND LOCATION OF PERMIT

ORIGINALLY PERMITTED AT: SEC 12-21S-37E, UNIT N, 1220' FSL & 1390' FWL

LOCATION HAS CHANGED DUE TO INJECTION PIPELINE

NEW LOCATION: SEC 12-21S-37E, LOT N, 1120' FSL & 1550' FWL

I hereby certify that the information above is true and complete to the best of my knowledge and belief. I further certify that any pit or below-grade tank has been/will be constructed or closed according to NMOCDD guidelines, a general permit, or an (attached) alternative OCD-approved plan.

SIGNATURE Lana Williams TITLE Engr. TechDATE 1/14/08Type or print name Lana Williams E-mail address ana.williams@Telephone No. 918-491-4980

For State Use Only:

APPROVED BY: Chris Williams TITLE

DATE

OCD DISTRICT SUPERVISOR/GENERAL MANAGER

JAN 24 2008

OK

DISTRICT I
1626 N. FRENCH DR., HOHES, NM 86240

DISTRICT II
1301 W. GRAND AVENUE, ARTESIA, NM 86210

DISTRICT III
1000 Rio Brazos Rd., Aztec, NM 87410

DISTRICT IV
1220 S. ST. FRANCIS DR., SANTA FE, NM 87505

State of New Mexico
Energy, Minerals and Natural Resources Department

OIL CONSERVATION DIVISION
1220 SOUTH ST. FRANCIS DR.
Santa Fe, New Mexico 87505

Form C-102
Revised October 12, 2005
Submit to Appropriate District Office
State Lease - 4 Copies
Fee Lease - 3 Copies

WELL LOCATION AND ACREAGE DEDICATION PLAT

☐ AMENDED REPORT

API Number 30-025-38500	Pool Code 22900	Pool Name Eunice Bl - Tk - DR, North
Property Code 35023	Property Name EAST BLINEBRY DRINKARD UNIT	Well Number 68
OGRID No. 873	Operator Name APACHE CORPORATION	Elevation 3445'

Surface Location

UL or lot No.	Section	Township	Range	Lot Idn	Feet from the	North/South line	Feet from the	East/West line	County
N	12	21-S	37-E		1120	SOUTH	1550	WEST	LEA

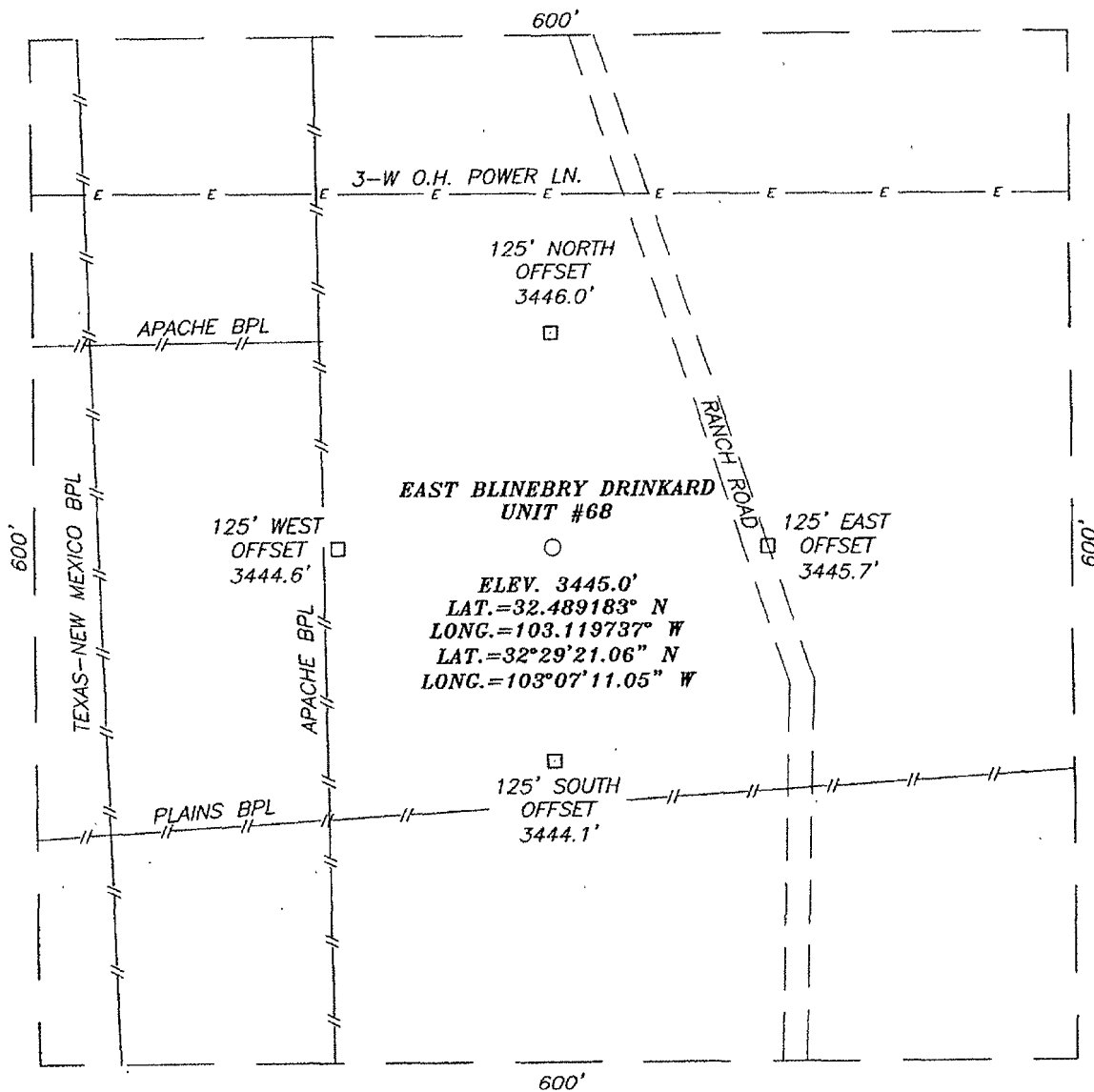
Bottom Hole Location If Different From Surface

UL or lot No.	Section	Township	Range	Lot Idn	Feet from the	North/South line	Feet from the	East/West line	County
Dedicated Acres 40	Joint or Infill	Consolidation Code	Order No.						

NO ALLOWABLE WILL BE ASSIGNED TO THIS COMPLETION UNTIL ALL INTERESTS HAVE BEEN CONSOLIDATED
OR A NON-STANDARD UNIT HAS BEEN APPROVED BY THE DIVISION

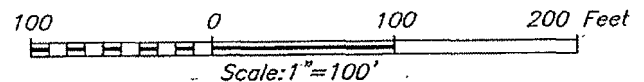
	<p>OPERATOR CERTIFICATION</p> <p>I hereby certify that the information herein is true and complete to the best of my knowledge and belief, and that this organization either owns a working interest or unleased mineral interest in the land including the proposed bottom hole location or has a right to drill this well at this location pursuant to a contract with an owner of such mineral or working interest, or to a voluntary pooling agreement or a compulsory pooling order heretofore entered by the division.</p> <p><i>Lara Williams</i> Signature Date <i>Lara Williams</i> 1/16/08 Printed Name</p> <p>SURVEYOR CERTIFICATION</p> <p>I hereby certify that the well location shown on this plat was plotted from field notes of actual surveys made by me or under my supervision, and that the same is true and correct to the best of my belief.</p> <p><i>Ronald J. Eidson</i> Signature & Seal of Professional Surveyor Date Surveyed JANUARY 8 2008 NEW MEXICO 08-110032-109 01/14/08</p> <p>Certificate No. GARY EIDSON 12641 RONALD J. EIDSON 3239</p>
--	-------------------------------------------------------------------------------------------------------------------------------------------------------------------------------------------------------------------------------------------------------------------------------------------------------------------------------------------------------------------------------------------------------------------------------------------------------------------------------------------------------------------------------------------------------------------------------------------------------------------------------------------------------------------------------------------------------------------------------------------------------------------------------------------------------------------------------------------------------------------------------------------------------------------------------------------------------------------------------------------------------------------------------------------------------------------------------------------------------------------------------------------

SECTION 12, TOWNSHIP 21 SOUTH, RANGE 37 EAST, N.M.P.M.,
LEA COUNTY, NEW MEXICO



DIRECTIONS TO LOCATION

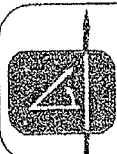
FROM THE INTERSECTION OF ST. HWY. #18 AND CO. RD. #E-38 (JONES CITY RD.), GO NORTH ON ST. HWY. #18 APPROX. 1.3 MILES. TURN RIGHT AND GO EAST APPROX. 0.4 MILES. TURN RIGHT AND GO SOUTH APPROX. 0.1 MILE. THIS LOCATION IS APPROX. 125 FEET WEST.



APACHE CORPORATION

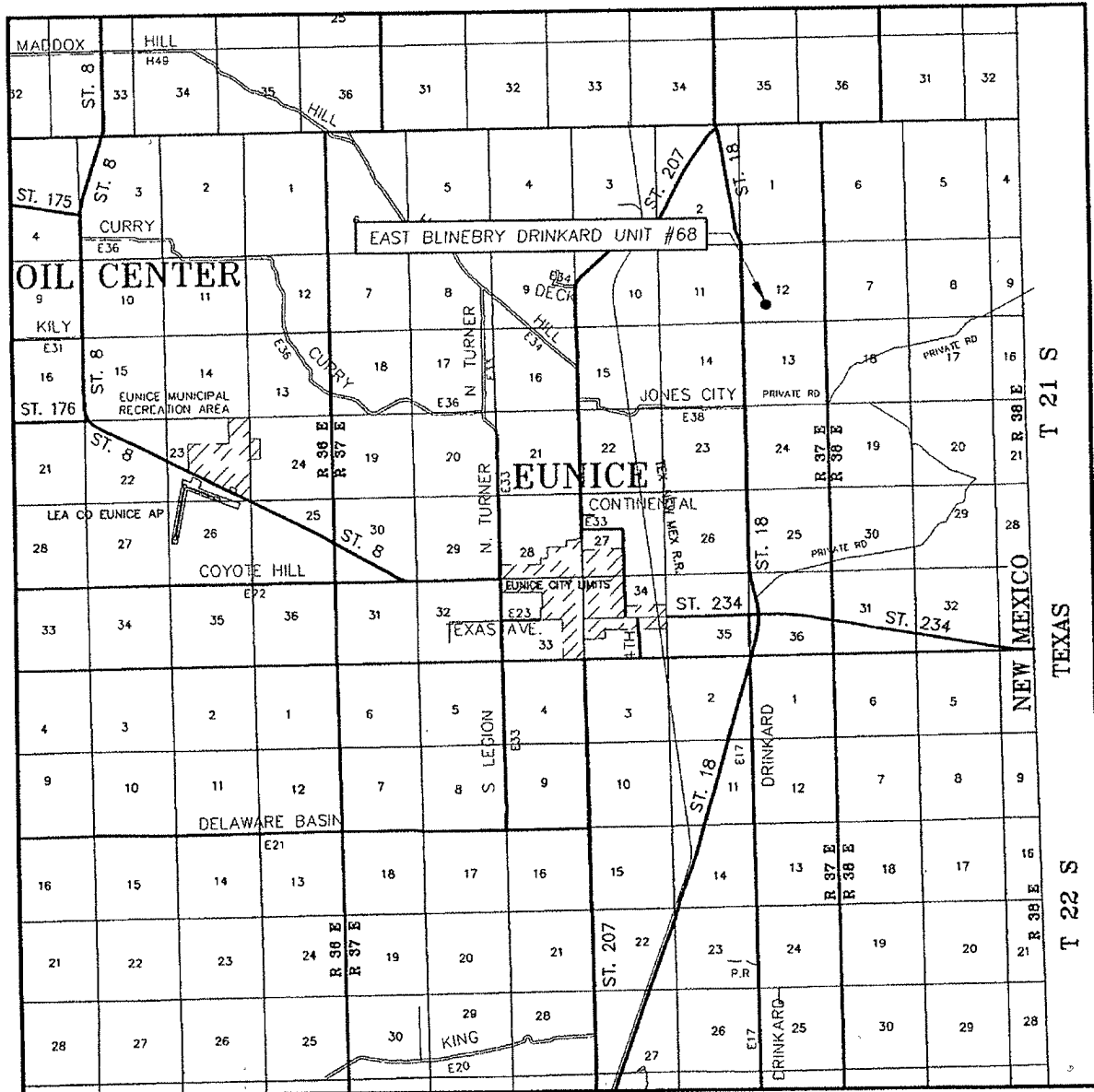
EAST BLINEBRY DRINKARD UNIT #68 WELL
LOCATED 1120 FEET FROM THE SOUTH LINE
AND 1550 FEET FROM THE WEST LINE OF SECTION 12,
TOWNSHIP 21 SOUTH, RANGE 37 EAST, N.M.P.M.,
LEA COUNTY, NEW MEXICO.

Survey Date: 01/08/08	Sheet 1 of 1 Sheets
W.O. Number: 08.11.0034	Dr By: AR/DSS
Date: 01/11/08	Scale: 1"=100'



PROVIDING SURVEYING SERVICES
SINCE 1946
JOHN WEST SURVEYING COMPANY
412 N. DAL PASO
HOBBS, N.M. 88240
(505) 393-3117

VICINITY MAP



SCALE: 1" = 2 MILES

SEC. 12 TWP. 21-S RGE. 37-E

SURVEY N.M.P.M.

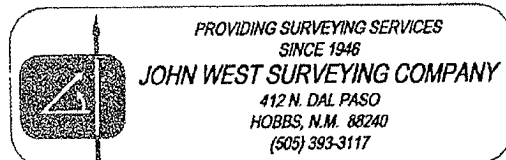
COUNTY LEA STATE NEW MEXICO

DESCRIPTION 1120' FSL & 1550' FWL

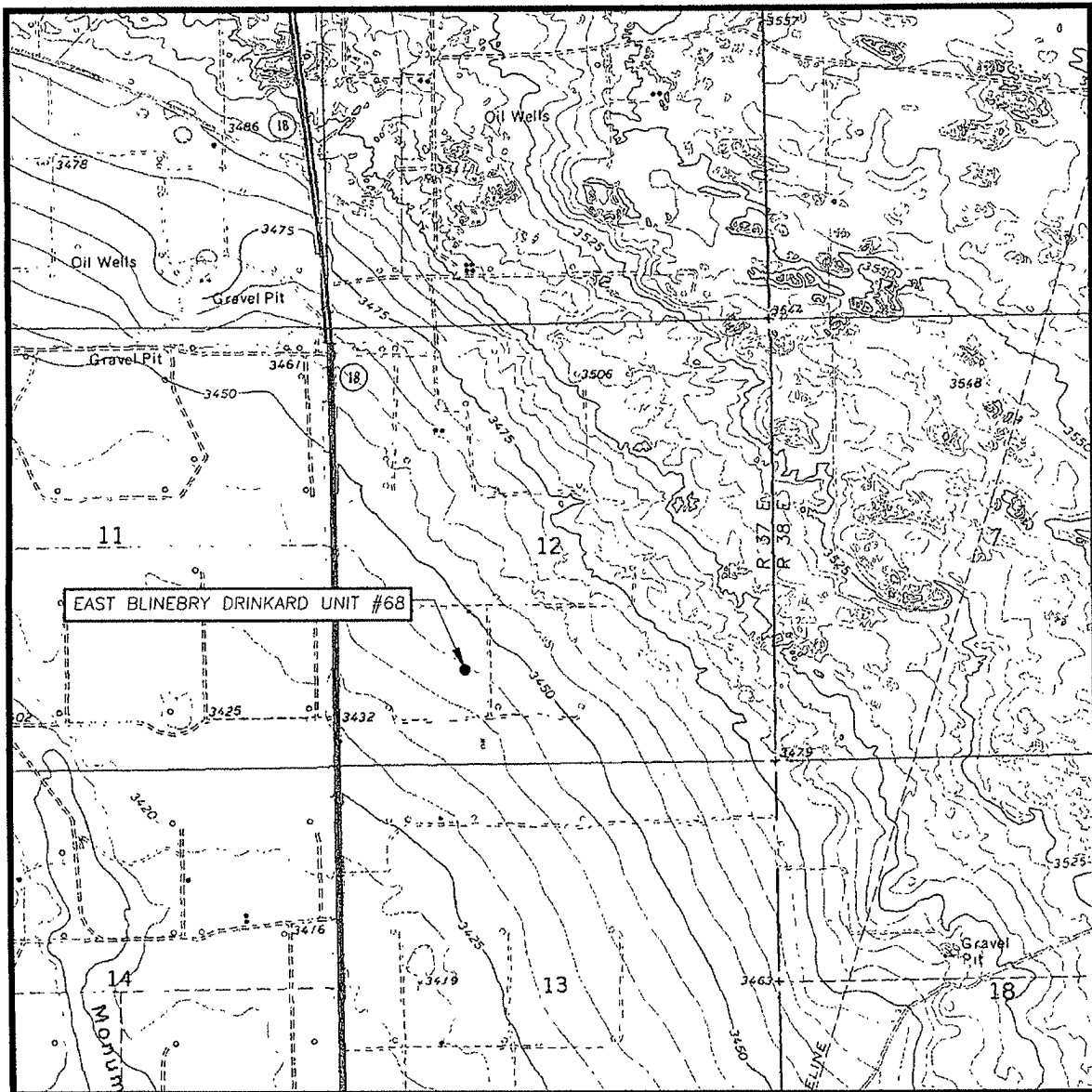
ELEVATION 3445'

OPERATOR APACHE CORPORATION

LEASE EAST BLINEBRY DRINKARD UNIT



LOCATION VERIFICATION MAP



SCALE: 1" = 2000'

SEC. 12 TWP. 21-S RGE. 37-E

SURVEY _____ N.M.P.M.

COUNTY LEA STATE NEW MEXICO

DESCRIPTION 1120' FSL & 1550' FWL

ELEVATION 3445'

OPERATOR APACHE CORPORATION

LEASE EAST BLINEBRY DRINKARD UNIT

U.S.G.S. TOPOGRAPHIC MAP

EUNICE NE, N.M.

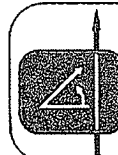
CONTOUR INTERVAL:

EUNICE NE, N.M. - 5'

EUNICE, N.M. - 10'

HOBBS SW, N.M. - 5'

HOBBS SE, N.M. - 5'



PROVIDING SURVEYING SERVICES
SINCE 1946
JOHN WEST SURVEYING COMPANY
412 N. DAL PASO
HOBBS, N.M. 88240
(505) 393-3117