

OCD-HOBBS

FORM APPROVED
OMB No. 1004-0137
Expires March 31, 2007

UNITED STATES
DEPARTMENT OF THE INTERIOR
BUREAU OF LAND MANAGEMENT

APPLICATION FOR PERMIT TO DRILL OR REENTER

Split Estate

1a. Type of work: ☒ DRILL ☐ REENTER

1b. Type of Well: ☒ Oil Well ☐ Gas Well ☐ Other ☒ Single Zone ☐ Multiple Zone

2. Name of Operator
APACHE CORPORATION (LANA WILLIAMS 918-491-4980) <873>

3a. Address TWO WARREN PLACE SUITE 1500 3b. Phone No. (include area code)
6120 SOUTH YALE, TULSA, OKLAHOMA 74136-4224 (PH-918-491-4980)

4. Location of Well (Report location clearly and in accordance with any State requirements.)
At surface: 330' FSL & 990' FEL SECTION 14 T21S-R37E LEA CO. NM
At proposed prod. zone: SAME Capitan Controlled Water Basin Unit P

14. Distance in miles and direction from nearest town or post office:
Approximately 4 miles Northeast of Eunice New Mexico

5. Lease Serial No.
NM-032096-B

6. If Indian, Allottee or Tribe Name

7. If Unit or CA Agreement, Name and No.

8. Lease Name and Well No.
EBDU # 69 <35023>

9. API Well No.
30-D25-38751

10. Field and Pool, or Exploratory
EUNICE-BLINEBRY-TUBB
DRINKARD-NORTH <2200>

11. Sec., T. R. M. or Blk. and Survey or Area
SECTION 14 T21S-R37E

12. County or Parish
LEA CO. 13. State
NEW MEXICO

15. Distance from proposed* location to nearest property or lease line, ft. (Also to nearest drig. unit line, if any) 330'
16. No. of acres in lease 1920
17. Spacing Unit dedicated to this well 40

18. Distance from proposed location* to nearest well, drilling, completed, applied for, on this lease, ft. 452'
19. Proposed Depth 6950'
20. BLM/BIA Bond No. on file
BLM-CO-1463 NATION WIDE

21. Elevations (Show whether DF, KDB, RT, GL, etc.) 3410' GL
22. Approximate date work will start* WHEN APPROVED
23. Estimated duration 20

24. Attachments

The following, completed in accordance with the requirements of Onshore Oil and Gas Order No.1, shall be attached to this form:

- Well plat certified by a registered surveyor.
- A Drilling Plan.
- A Surface Use Plan (if the location is on National Forest System Lands, the SUPO shall be filed with the appropriate Forest Service Office).
- Bond to cover the operations unless covered by an existing bond on file (see item 20 above).
- Operator certification
- Such other site specific information and/or plans as may be required by the authorized officer.

25. Signature *Joe T. Janica* Name (Printed Type) Joe T. Janica Date 11/28/07

Title Agent

Approved by (Signature) /s/ James Stovall Name (Printed Type) /s/ James Stovall Date FEB - 2 2008

Title FIELD MANAGER Office CARLSBAD FIELD OFFICE

Application approval does not warrant or certify that the applicant holds legal or equitable title to those rights in the subject lease which would entitle the applicant to conduct operations thereon.
Conditions of approval, if any, are attached.
APPROVAL FOR TWO YEARS

Under 18 U.S.C. Section 1001 and Title 43 U.S.C. Section 1212, make it a felony to knowingly make any false, fictitious or fraudulent statements or representations as to the facts or law in connection with any matter within the jurisdiction of any department or agency of the United States.

SEE ATTACHED FOR
CONDITIONS OF APPROVAL

FEB - 6 2008
HOBBS OCD

APPROVAL SUBJECT TO
GENERAL REQUIREMENTS
AND SPECIAL STIPULATIONS
ATTACHED

Apache Corporation has negotiated a surface damage agreement with William Stephens P. O. Box 115 Eunice, New Mexico on the EBDU # 69 330' FSL & 990' FEL Section 14 T21S-R37E LEA CO. NEW MEXICO.

William Stephens
P. O. Box 115
Eunice, New Mexico 88231

Joe T. Garcia

DISTRICT I
1625 N. FRENCH DR., HOBBS, NM 88240

DISTRICT II
1301 W. GRAND AVENUE, ARTESIA, NM 88210

DISTRICT III
1000 Rio Brazos Rd., Aztec, NM 87410

DISTRICT IV
1220 S. ST. FRANCIS DR., SANTA FE, NM 87505

State of New Mexico
Energy, Minerals and Natural Resources Department

OIL CONSERVATION DIVISION
1220 SOUTH ST. FRANCIS DR.
Santa Fe, New Mexico 87505

Form C-102
Revised October 12, 2005
Submit to Appropriate District Office
State Lease - 4 Copies
Fee Lease - 3 Copies

WELL LOCATION AND ACREAGE DEDICATION PLAT

☐ AMENDED REPORT

API Number 30-025-38751	Pool Code 22900 ✓	Pool Name EUNICE-BLINEBRY-TUBB-DRINKARD, NOTRH
Property Code 35023 ✓	Property Name EAST BLINEBRY DRINKARD UNIT	Well Number 69
OGRID No. 873 ✓	Operator Name APACHE CORPORATION	Elevation 3410'

Surface Location

UL or lot No.	Section	Township	Range	Lot Idn	Feet from the	North/South line	Feet from the	East/West line	County
P	14	21-S	37-E		330	SOUTH	990	EAST	LEA

Bottom Hole Location If Different From Surface

UL or lot No.	Section	Township	Range	Lot Idn	Feet from the	North/South line	Feet from the	East/West line	County

Dedicated Acres 40	Joint or Infill	Consolidation Code	Order No.
-----------------------	-----------------	--------------------	-----------

NO ALLOWABLE WILL BE ASSIGNED TO THIS COMPLETION UNTIL ALL INTERESTS HAVE BEEN CONSOLIDATED
OR A NON-STANDARD UNIT HAS BEEN APPROVED BY THE DIVISION

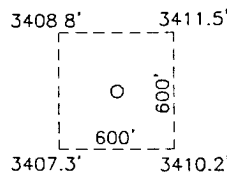
GEODETIC COORDINATES
NAD 27 NME

Y=537703.5 N
X=871750.0 E

LAT.=32.472486° N
LONG.=103.127935° W

LAT.=32°28'20.95" N
LONG.=103°07'40 57" W

DETAIL



NM-032096-B

SEE DETAIL

330' 990'

OPERATOR CERTIFICATION

I hereby certify that the information herein is true and complete to the best of my knowledge and belief, and that this organization either owns a working interest or unleased mineral interest in the land including the proposed bottom hole location or has a right to drill this well at this location pursuant to a contract with an owner of such mineral or working interest, or to a voluntary pooling agreement or a compulsory pooling order heretofore entered by the division.

Signature

Date
11/28/07

Joe T. Janica
Printed Name

SURVEYOR CERTIFICATION

I hereby certify that the well location shown on this plat was plotted from field notes of actual surveys made by me or under my supervision, and that the same is true and correct to the best of my belief.

Date Surveyed

Signature & Seal of
Professional Surveyor

3239

9/11/07

07:44:08.2

07:44:08.2

07:44:08.2

07:44:08.2

07:44:08.2

07:44:08.2

07:44:08.2

07:44:08.2

07:44:08.2

07:44:08.2

07:44:08.2

07:44:08.2

07:44:08.2

Certificate No. GARY EIDSON 12641
RONALD J. EIDSON 3239

DISTRICT I
1825 N. FRENCH DR., HOBBS, NM 88240

State of New Mexico
Energy, Minerals and Natural Resources Department

DISTRICT II
1301 W. GRAND AVENUE, ARTESIA, NM 88210

DISTRICT III
1000 Rio Brazos Rd., Aztec, NM 87410

DISTRICT IV
1220 S. ST. FRANCIS DR., SANTA FE, NM 87505

OIL CONSERVATION DIVISION
1220 SOUTH ST. FRANCIS DR.
Santa Fe, New Mexico 87505

Form C-102
Revised October 12, 2005
Submit to Appropriate District Office
State Lease - 4 Copies
Fee Lease - 3 Copies

WELL LOCATION AND ACREAGE DEDICATION PLAT

☐ AMENDED REPORT

API Number	Pool Code	Pool Name
Property Code	Property Name EAST BLINEBRY DRINKARD UNIT	Well Number 69
OGRID No.	Operator Name APACHE CORPORATION	Elevation 3410'

Surface Location

UL or lot No.	Section	Township	Range	Lot Idn	Feet from the	North/South line	Feet from the	East/West line	County
P	14	21-S	37-E		330	SOUTH	990	EAST	LEA

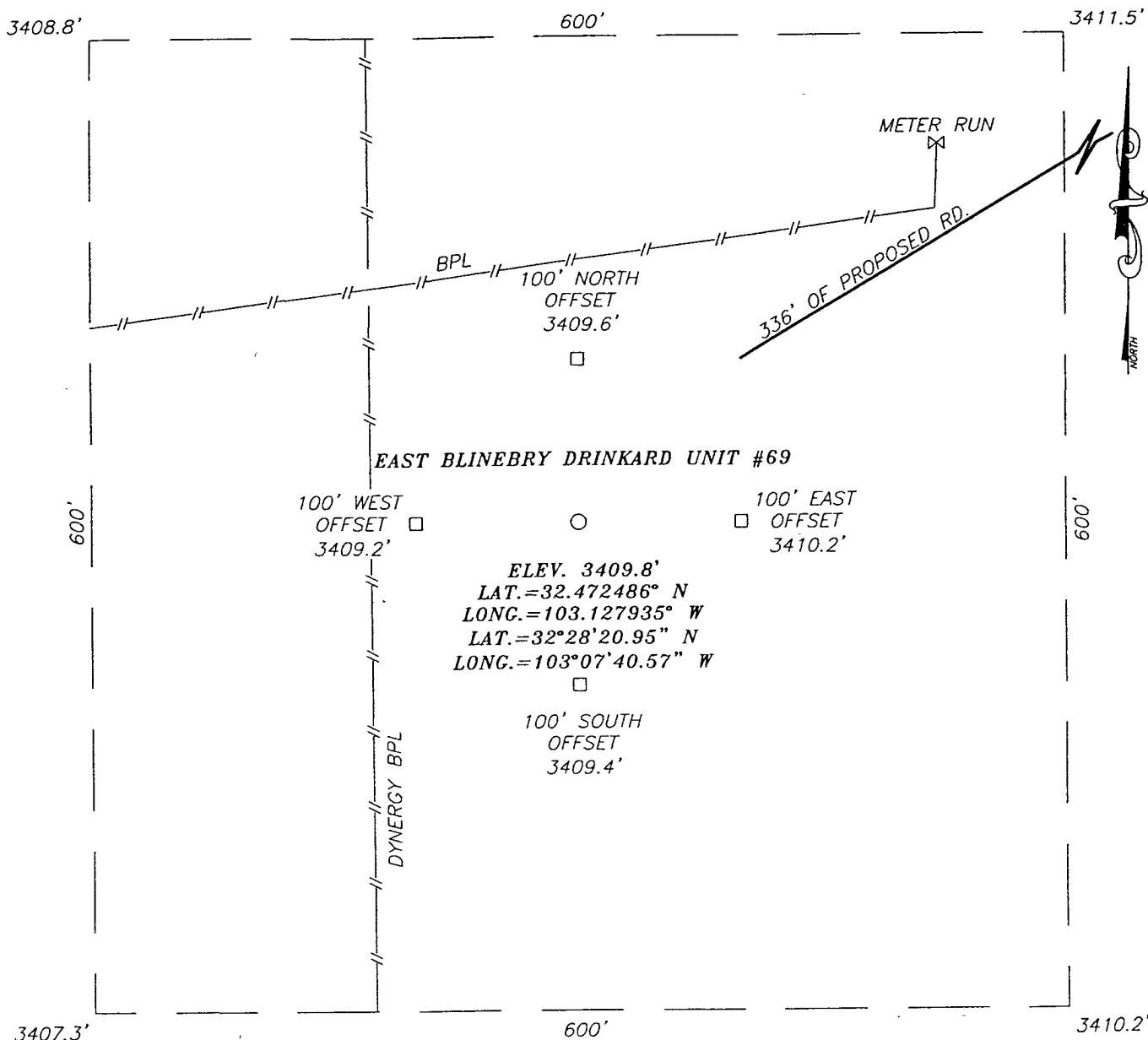
Bottom Hole Location If Different From Surface

UL or lot No.	Section	Township	Range	Lot Idn	Feet from the	North/South line	Feet from the	East/West line	County
Dedicated Acres	Joint or Infill	Consolidation Code	Order No.						

NO ALLOWABLE WILL BE ASSIGNED TO THIS COMPLETION UNTIL ALL INTERESTS HAVE BEEN CONSOLIDATED
OR A NON-STANDARD UNIT HAS BEEN APPROVED BY THE DIVISION

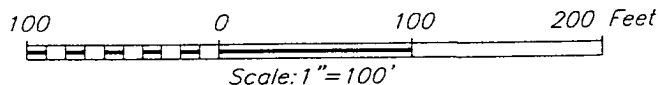
<p>GEODETIC COORDINATES NAD 27 NME</p> <p>Y=537703.5 N X=871750.0 E</p> <p>LAT.=32.472486° N LONG.=103.127935° W</p> <p>LAT.=32°28'20.95" N LONG.=103°07'40.57" W</p> <p>EBDU #62</p> <p>EBDU #144 PLUGGED</p>	<p>OPERATOR CERTIFICATION</p> <p>I hereby certify that the information herein is true and complete to the best of my knowledge and belief, and that this organization either owns a working interest or unleased mineral interest in the land including the proposed bottom hole location or has a right to drill this well at this location pursuant to a contract with an owner of such mineral or working interest, or to a voluntary pooling agreement or a compulsory pooling order heretofore entered by the division.</p> <p>Signature _____ Date _____</p> <p>Printed Name _____</p>
	<p>SURVEYOR CERTIFICATION</p> <p>I hereby certify that the well location shown on this plat was plotted from field notes of actual surveys made by me or under my supervision, and that the same is true and correct to the best of my belief.</p> <p>AUGUST 4, 2007</p>
	<p>Date Surveyed _____ AR</p> <p>Signature & Seal of Professional Surveyor</p>
	<p>07.11.1082</p> <p>Certificate No. GARY EIDSON 12641 RONALD J. EIDSON 3239</p>

SECTION 14, TOWNSHIP 21 SOUTH, RANGE 37 EAST, N.M.P.M.,
 LEA COUNTY, NEW MEXICO



DIRECTIONS TO LOCATION

FROM THE INTERSECTION OF ST. HWY. #18 AND CO. RD. #E38 (JONES CITY RD.), GO NORTH ON ST. HWY. #18 APPROX. 0.7 MILES. TURN LEFT AND GO WEST APPROX. 0.1 MILE. TURN LEFT AND GO SOUTH APPROX. 0.55 MILES TO PROPOSED RD. SURVEY. FOLLOW FLAGS SOUTHWEST APPROX. 336 FEET TO THE NORTHEAST CORNER OF PROPOSED PAD.



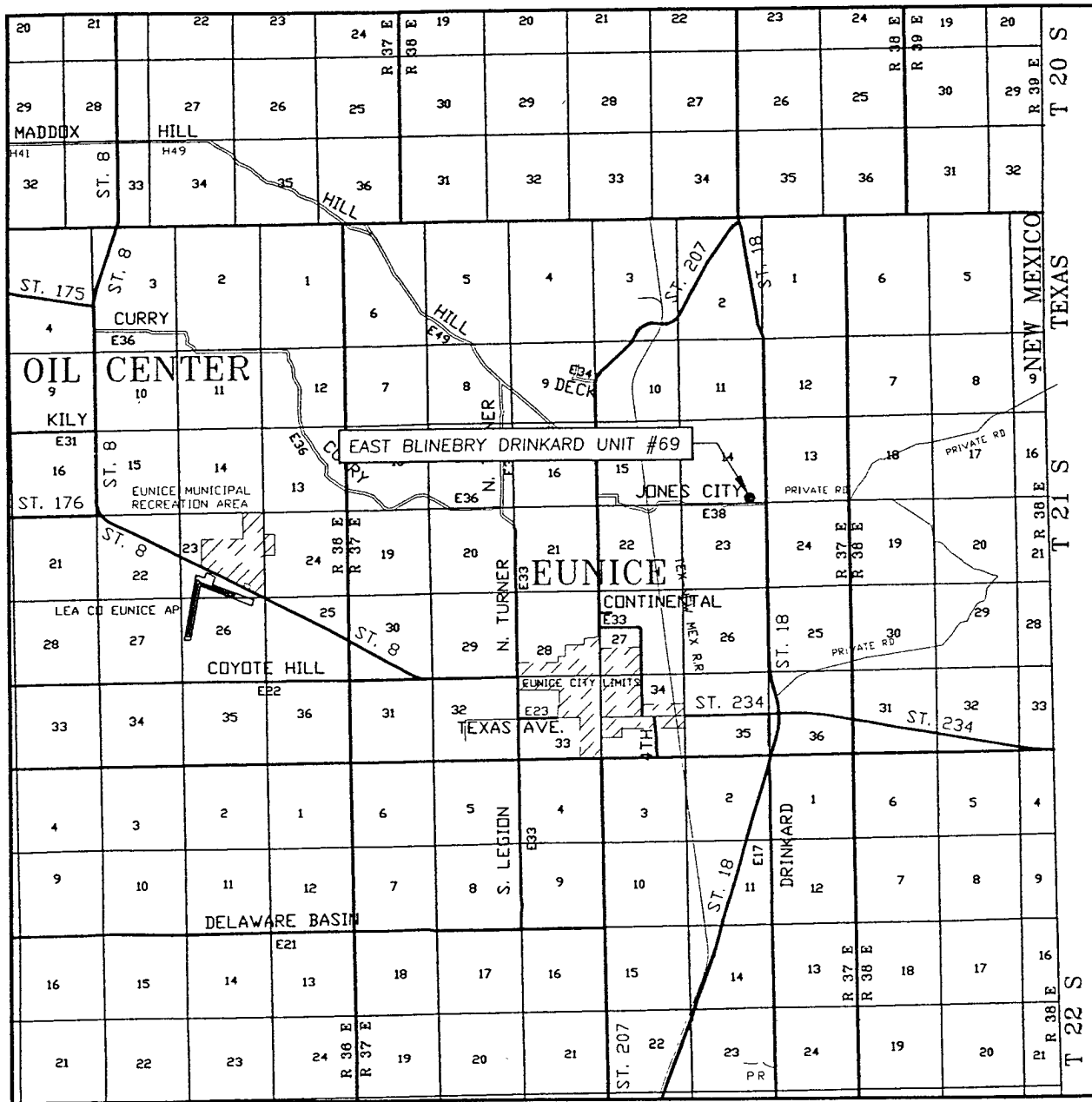
APACHE CORPORATION

EAST BLINEBRY DRINKARD UNIT #69
 LOCATED 330 FEET FROM THE SOUTH LINE
 AND 990 FEET FROM THE EAST LINE OF SECTION 14,
 TOWNSHIP 21 SOUTH, RANGE 37 EAST, N.M.P.M.,
 LEA COUNTY, NEW MEXICO.

Survey Date: 9/04/07	Sheet 1 of 1 Sheets
W.O. Number: 07.11.1082	Dr By: AR
Date: 9/14/07	Disk: 07111082
	Rev 1: N/A
	Scale: 1"=100'

PROVIDING SURVEYING SERVICES
 SINCE 1946
JOHN WEST SURVEYING COMPANY
 412 N. DAL PASO
 HOBBS, N.M. 88240
 (505) 393-3117

VICINITY MAP



SCALE: 1" = 2 MILES

SEC. 14 TWP. 21-S RGE. 37-E

SURVEY N.M.P.M.

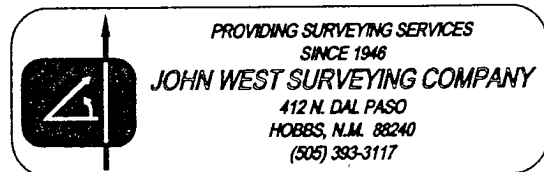
COUNTY LEA STATE NEW MEXICO

DESCRIPTION 330' FSL & 990' FEL

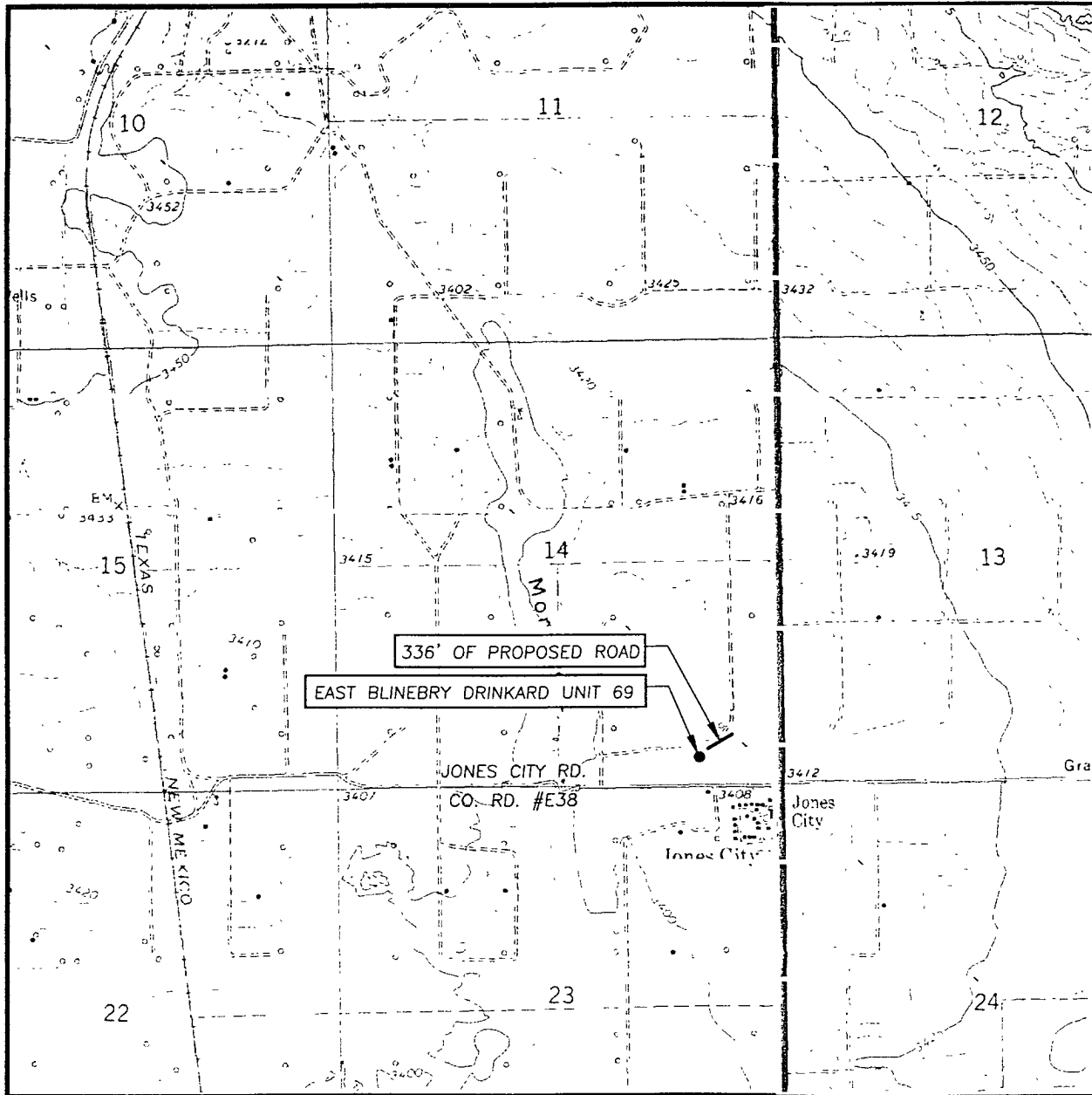
ELEVATION 3410'

OPERATOR APACHE CORPORATION

LEASE EAST BLINEBRY DRINKARD UNIT



LOCATION VERIFICATION MAP



SCALE: 1" = 2000'

CONTOUR INTERVAL:
EUNICE, N.M. - 10'
EUNICE NW, N.M. - 5'

SEC. 14 TWP. 21-S RGE. 37-E

SURVEY N.M.P.M.

COUNTY LEA STATE NEW MEXICO

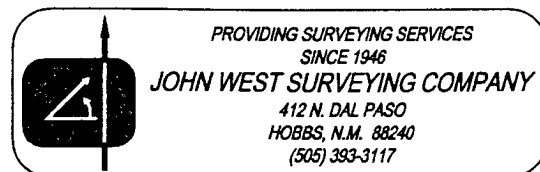
DESCRIPTION 330' FSL & 990' FEL

ELEVATION 3410'

OPERATOR APACHE CORPORATION

LEASE EAST BLINEBRY DRINKARD UNIT

U.S.G.S. TOPOGRAPHIC MAP
EUNICE, N.M.



Joe Janica

From: Williams, Lana [lana.williams@usa.apachecorp.com]
Sent: Wednesday, December 12, 2007 9:25 AM
To: joejanica@valornet.com
Subject: FW: BLM Permit Additions

BOP Testing

All BOP's are tested by a third party company to 2000 psi after we nipple up.

BHP Calculation

The pressure noted is based on depleted BHP in offset wells. Our mud program reflects a higher MW as we must use cut brine to drill through the salt sections, with the drill solids that we encounter MW could increase to 10.2 ppg. This increase in MW is not completed to account for BHP, but rather to achieve the chemistry required to drill through the salt sections.

*Burger B-17 #1 → page 2 from the packet sent to the BLM needs to be changed to reflect our casing plan. The surface hole/casing will be at a depth of 1600', while the production hole will be from 1600'-TD.

Lucas Martin
Drilling Engineer
Apache Corporation
Office: 918-491-4883
Cell: 918-527-3516

12/12/2007

In response to questions asked under Section II of Bulletin NTL-6, the following information on the above well is provided for your information.

1. LOCATION: 330' FSL & 990' FEL SECTION 14 T21S-R37E LEA CO. NEW MEXICO

2. ELEVATION ABOVE SEA LEVEL: 3410' GL.

3. GEOLOGIC NAME OF SURFACE FORMATION: Quaternary Aeolian Deposits.

4. DRILLING TOOLS AND ASSOCIATED EQUIPMENT: Conventional rotary drilling rig using drilling mud as a circulating medium for solids removal from hole.

5. PROPOSED DRILLING DEPTH: 6950'

6. ESTIMATED TOPS OF GEOLOGICAL MARKERS:

Rustler Anhydrite	1314'	Glorieta	5197'
Yates	2612'	Blinbry	5629'
Queen	3414'	Tubb	6110'
Grayburg	3748'	Drinkard	6463'
San Andres	3984'	Abo	6708'
		TD	6950'

7. POSSIBLE MINERAL BEARING FORMATION:

Blinbry	Oil	Drinkard	Oil
Tubb	Oil		

8. CASING PROGRAM:

Hole Size	Interval	OD of Casing	Weight	Thread	Collar	Grade
26"	0-40'	20"	NA	NA	NA	Conductor New
12 1/2"	0-1300'	8 5/8"	24#	8-R	ST&C	J-55 New
7 7/8"	0-6950'	5 1/2"	17#	8-R	LT&C	J-55 New

Design factors: Collapse 1.125 Burst 1.0 Body Yield 1.5 Joint Strength:
 8-R 1.8
 Buttress 1.6.

EXHIBIT "A"
EAST BLINEBRY DRINKARD UNIT # 69
DRILLING PROGRAM

I. The geological surface formation is recent Permian with quaternary alluvium and other surficial deposits.

II. Estimated Tops of Geological Markers:

<u>FORMATION</u>	<u>DEPTH</u>
Quaternary alluvials	Surface
Rustler	1314'
Yates	2612'
Queen	3414'
Grayburg	3748'
San Andres	3984'
Glorieta	5197'
Blinebry	5629'
Tubb	6110'
Drinkard	6463'
Abo	6708'
TD	6950'

III. Estimated depths at which water, oil, gas, or other mineral-bearing formations are expected to be encountered:

<u>SUBSTANCE</u>	<u>DEPTH</u>
Oil	Blinebry@5629' Tubb@6110' Drinkard@ 6463'
Gas	None anticipated
Fresh Water	None anticipated

All fresh water and prospectively valuable minerals (as described by BLM) encountered during drilling will be recorded by depth and adequately protected. All oil and gas shows within zones of correlative rights will be tested to determine commercial potential.

IV. A. Proposed Casing Program:

<u>HOLE</u>	<u>CASING</u>	<u>WEIGHT</u>	<u>ESTIMATED TOC -</u>
<u>SIZE</u>	<u>OD / ID</u>	<u>PER</u>	<u>REMARKS</u>
<u>SIZE</u>	<u>GRADE</u>	<u>FOOT</u>	<u>CEMENT</u>
12 1/4"	8 5/8" 8.097"	J55 STC	24#
			1300'
			600
			TOC - Surface
			8.9 ppg Water-based Mud;
			89 ° F Est. Static Temp;
			83 ° F Est. Circ. Temp.
			TOC - Surface
			Float Collar set @
			6905' / 10.10 ppg
			Brine Mud;
			141 ° F Est. Static Temp;
			117 ° F Est. Circ. Temp.
7 7/8"	5 1/2" 4.892"	J55 LTC	17#
			6950'
			1,400

↑
see
COA

B. Proposed Cement Program:

	<u>LEAD SLURRY</u>	<u>TAIL SLURRY</u>	<u>DISPLACEMENT</u>
<u>CASING</u>			
8 5/8"	400 sacks 35:65 Poz:Class C Cement + 2% bwoc Calcium Chloride + 0.25 lbs/sack Cello Flake + 0.003 gps FP-6L + 6% bwoc Bentonite gel 752 Vol. Cu Ft 1.94 Vol. Factor Slurry Weight (ppg) 12.7 Slurry Yield (cf/sack) 1.88 Amount of Mix Water (gps) 10.7; <u>Estimated Pumping Time</u> - 70 BC (HH:MM)-4:00;	200 sacks Class C Cement + 2% bwoc Calcium Chloride + 0.125 lbs/sack Cello Flake + 56.3% Fresh Water 270 Vol. Cu Ft 1.94 Vol. Factor Slurry Weight (ppg) 14.8 Slurry Yield (cf/sack) 1.35 Amount of Mix Water (gps) 6.35 Estimated Pumping Time - 70 BC (HH:MM)-3:00;	79.8 bbls Fresh Water @ 8.33 ppg

8 5/8" Casing: Volume Calculations:

1260 ft	x	0.4127 cf/ft	with 100% excess	=	1040.0 cf
40 ft	x	0.8214 cf/ft	with 0% excess	=	32.8 cf
40 ft	x	0.3576 cf/ft	with 0% excess	=	14.3 cf (inside pipe)
TOTAL SLURRY VOLUME					= 1087.1 cf
					= 193.6 bbls

Spacer 20.0 bbls Water @ 8.33 ppg

	<u>LEAD SLURRY</u>	<u>TAIL SLURRY</u>	<u>DISPLACEMENT</u>
<u>CASING</u>			
5 1/2"	950 sacks (50:50) Poz (Fly Ash): Class C Cement + 5% bwow Sodium Chloride + 0.125 lbs/sack Cello Flake + 0.003 gps FP-6L + 10% bwoc Bentonite 2318 Vol. Cu Ft 2.66 Vol. Factor Slurry Weight (ppg) 11.8 Slurry Yield (cf/sack) 2.44 Amount of Mix Water (gps) 14.07; Amount of Mix Fluid (gps) 14.07 <u>Estimated Pumping Time - 70</u> BC (HH:MM)-4:00;	450 sacks (50:50) Poz (Fly Ash): Class C Cement + 5% bwow Sodium Chloride + 0.003 gps FP-6L 581 Vol. Cu Ft 1.84 Vol. Factor Slurry Weight (ppg) 14.2 Slurry Yield (cf/sack) 1.29 Amount of Mix Water (gps) 5.91; Amount of Mix Fluid (gps) 5.91; Estimated Pumping Time - 70 BC (HH:MM)-3:00;	171 bbls 2% Kcl Water @ 8.43 ppg

5 1/2" Casing: Volume Calculations:

1300 ft	x	0.1926 cf/ft	with 0% excess	=	250.4 cf
3300 ft	x	0.1733 cf/ft	with 159% excess	=	1481.2 cf
2310 ft	x	0.1733 cf/ft	with 85% excess	=	740.6 cf
40 ft	x	0.1305 cf/ft	with 0% excess	=	5.2 cf (inside pipe)
TOTAL SLURRY VOLUME					= 2477.4 cf
					= 442 bbls

All slurries will be tested prior to loading to confirm thickening times and a lab report furnished to Apache. Fluid loss will be tested and reported on slurries with fluid loss additives. Lab test report will be furnished prior to pumping cement.

V. A. Proposed Mud Program

<u>DEPTH</u>	<u>MUD PROPERTIES</u>	<u>REMARKS</u>
0 – 1,300'	Weight: 8.6 – 9.6 ppg Viscosity: 34 – 36 sec/qt pH: NC Filtrate: NC	Spud with a Conventional New Gel/Lime "Spud mud". Use NewGel and native solids to maintain a sufficient viscosity to keep the hole clean. Mix Paper one-two sacks every 100 feet drilled to minimize wall cake build up on water sands and to control seepage loss. At TD of interval, mix in pre-mix pit, 100 barrels of system fluid, NewGel viscosity of 60 sec/100cc, add 0.25 ppb of Super Sweep.
1300' – 5600'	Weight: 9.9 – 10.1 ppg Viscosity: 28 – 29 sec/qt pH: 9-10 Filtrate: NC	Drill out from under the surface casing with Brine Water. Paper should be added at 2 bags after every 100' drilled to control seepage losses. Use Lime to maintain pH at 9-10. Mix one gallon of New-55 at flowline every 250 feet drilled to promote solids settling. Sweep hole with 5-ppb of Super Sweep every 500 feet.
5600' – TD	Weight: 9.9 – 10.1 ppg Viscosity: 30 – 40 sec/qt pH: 9-10 Filtrate: 8-15 cm/30 min	From 5600' to Total Depth, it is recommended the system be restricted to the working pits. Adjust and maintain pH with Caustic Soda. Treat system with Newcide to prevent dacterial degradation of organic materials. Mix Starch (yellow) to control API filtrate at <15cc.

VI. Proposed Control Equipment:

Will install on the 8 5/8" surface casing a 9" x 3000 psi WP Double Ram BOP and will test before drilling out of surface casing. As expected pressures will not exceed 2000 psi, we request a waiver of the remote control requirement on the accumulator of the 3M BOP and a variance to run a 2M BOP, if available. See Exhibit "H" for BOP layout.

VII. Auxiliary Equipment:

- 9" x 3000 psi double BOP/blind & pipe ram (2M BOP if available)
- 41/2" x 3000 psi Kelly valve
- 9" x 3000 psi mud cross – H₂S detector on production hole
- Gate-type safety valve 3" choke line from BOP to manifold
- 2" adjustable chokes – 3" blowdown line

VIII A. Testing Program: None planned

B. Logging Program: The following logs may be run:

CNL, LDT, GR, CAL, DLL, MSFL, NGT, Sonic from TD-1300'
CNL, GR from TD-Surface

C. Coring Program: None planned

D. Mudlogging Program: Planned from 2500' - TD

IX. Abnormal Pressures

No abnormal pressures or temperatures are anticipated. In the event abnormal pressures are encountered, however, the proposed mud program will be modified to increase the mud-weight. The estimated maximum bottom hole pressure is 2000 psi.

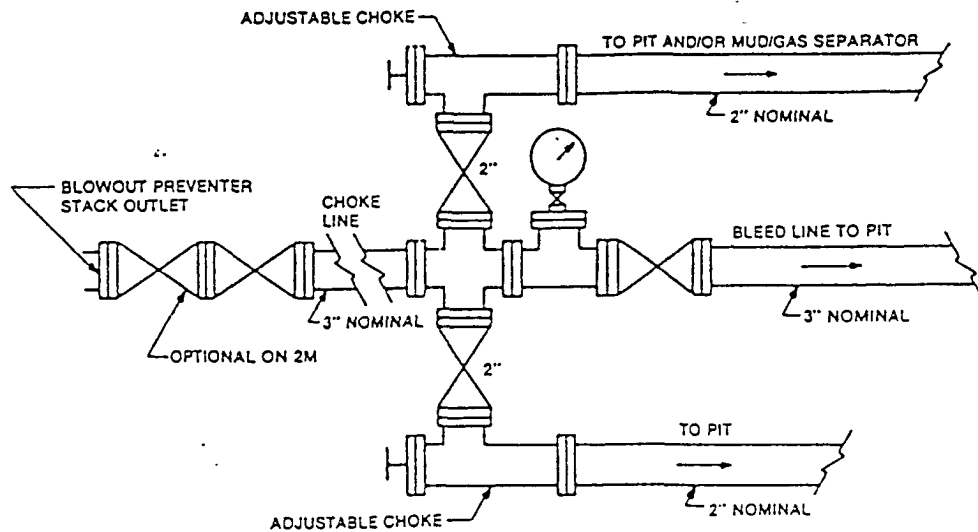


FIGURE K4-1. Typical choke manifold assembly for 2M and 3M rated working pressure service — surface installation.

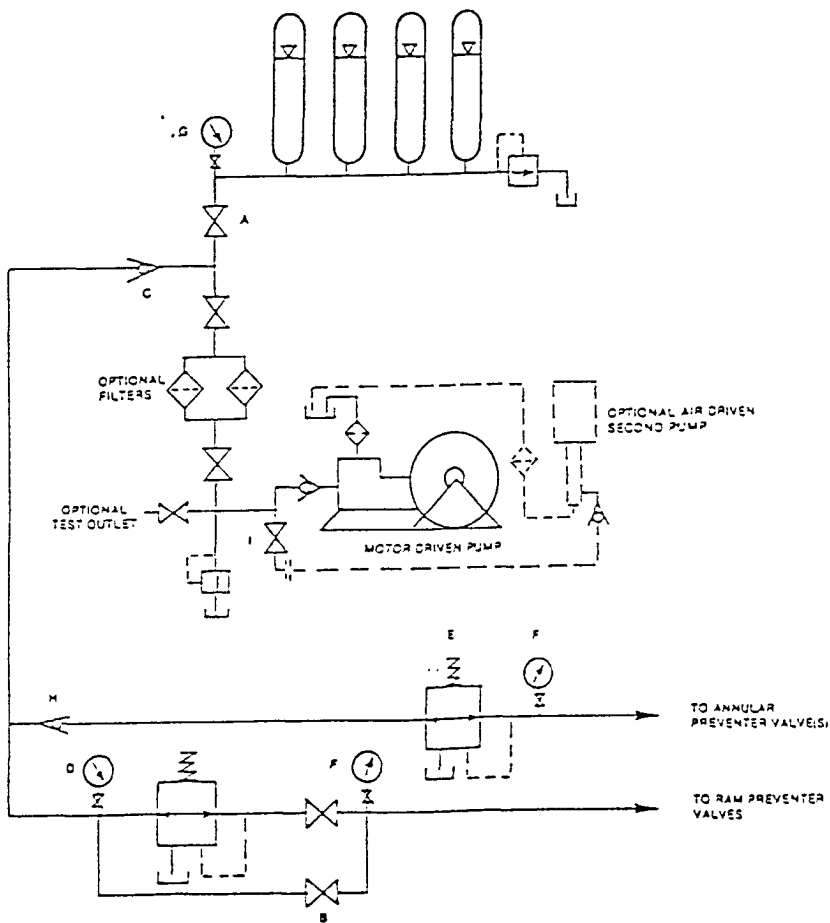


FIGURE K5-1. The schematic sketch of an accumulator system shows required and optional components.

EXHIBIT "E"
CHOKE MANIFOLD & CLOSING UNIT

APACHE CORPORATION
EAST BLINEBRY DRINKARD UNIT #69
UNIT "P" SECTION 14
T21S-R37E LEA CO. NM

3000psi -
BOPE

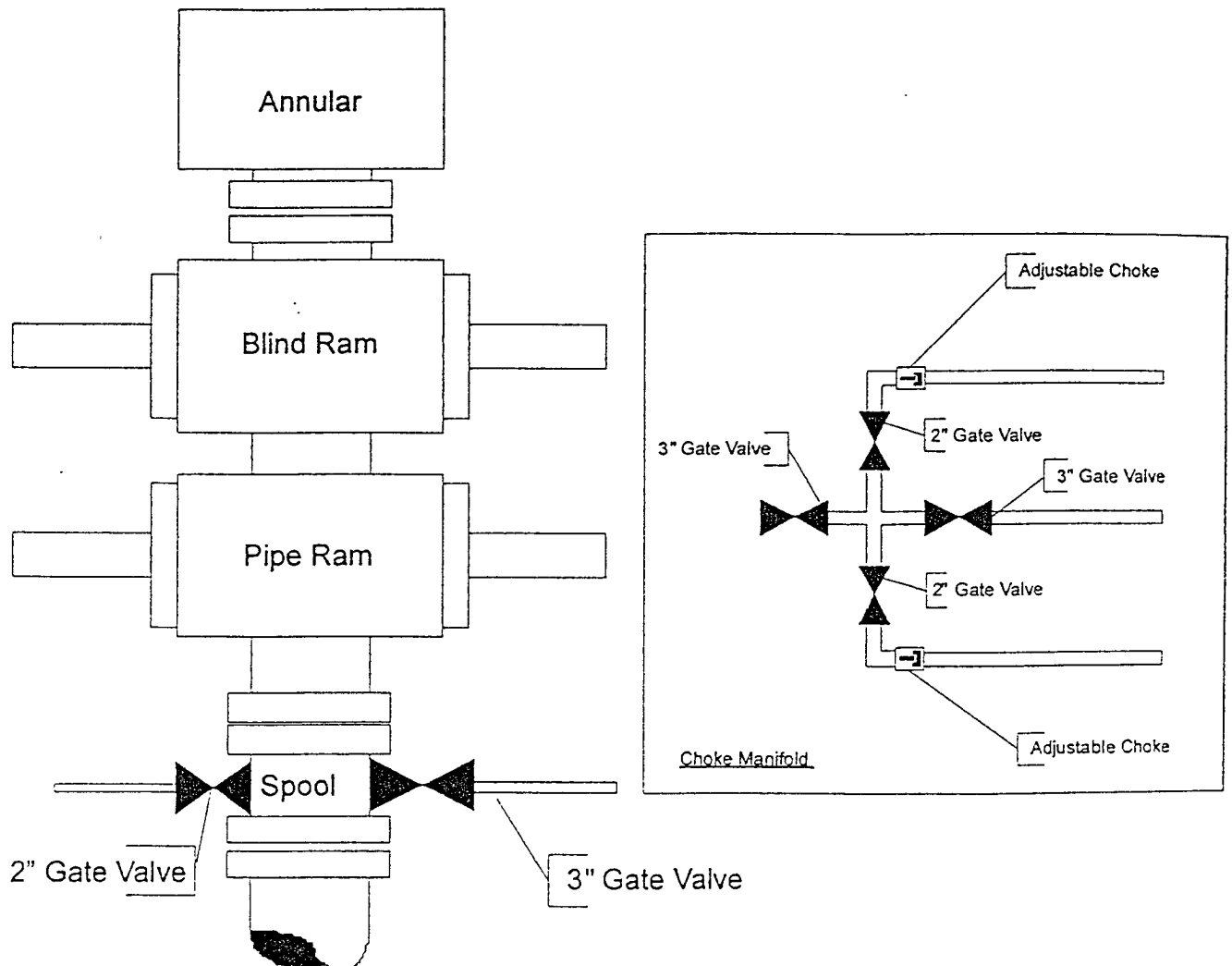


EXHIBIT "H"
SKETCH OF B.O.P. TO BE USED ON

APACHE CORPORATION
EAST BLINEBRY DRINKARD UNIT #69
UNIT "P" SECTION 14
T21S-R37E LEA CO. NM

EXHIBIT "B"
EAST BLINEBRY DRINKING WATER

HYDROGEN SULFIDE DRILLING OPERATIONS PLAN

150 1120 is anticipated.

HYDROGEN SULFIDE DRILLING OPERATIONS PLAN

1. All Company and Contract personnel admitted on location must be trained by a qualified H₂S safety instructor to the following:
 - A. Characteristics of H₂S
 - B. Physical effects and hazards
 - C. Proper use of safety equipment and life support systems.
 - D. Principle and operation of H₂S detectors, warning system and briefing areas.
 - E. Evacuation procedure, routes and first aid.
 - F. Proper use of 30 minute pressure demand air pack.
2. H₂S Detection and Alarm Systems
 - A. H₂S detectors and audio alarm system to be located at bell nipple, end of blosie line (mud pit) and on derrick floor or doghouse.
3. Windsock and/or wind streamers
 - A. Windsock at mudpit area should be high enough to be visible.
 - B. Windsock at briefing area should be high enough to be visible.
 - C. There should be a windsock at entrance to location.
4. Condition Flags and Signs
 - A. Warning sign on access road to location.
 - B. Flags to be displayed on sign at entrance to location. Green flag, normal safe condition. Yellow flag indicates potential pressure and danger. Red flag, danger, H₂S present in dangerous concentration. Only emergency personnel admitted to location.
5. Well control equipment
 - A. See exhibit "E"
6. Communication
 - A. While working under masks chalkboards will be used for communication.
 - B. Hand signals will be used where chalk board is inappropriate.
 - C. Two way radio will be used to communicate off location in case of emergency help is required. In most cases cellular telephoned will be available at most drilling foreman's trailer or living quarters.
7. Drillstem Testing
 - A. Exhausts will be watered.
 - B. Flare line will be equipped with an electric ignitor or a propane pilot light in case gas reaches the surface.
 - C. If location is near any dwelling a closed D.S.T. will be performed.

HYDROGEN SULFIDE DRILLING OPERATIONS PLAN

8. Drilling contractor supervisor will be required to be familiar with the effects H_2S has on tubular goods and other mechanical equipment.
9. If H_2S is encountered, mud system will be altered if necessary to maintain control of formation. A mud gas separator will be brought into service along with H_2S scavengers if necessary.

EXHIBIT "C"
SURFACE USE AND OPERATIONS PLAN
CULTURAL RESOURCES SURVEY
APPROXIMATE REHABILITATION SCHEDULE

LOCALITY: EAST BLINEBRY DRINKARD UNIT # 69
OPERATOR: **APACHE CORPORATION**

LOCATION: SE¼ OF SECTION 14, T21S-R37E, N.M.P.M.
LEA COUNTY, NEW MEXICO

SUBMITTED TO:

UNITED STATES DEPARTMENT OF THE INTERIOR
BUREAU OF LAND MANAGEMENT
CARLSBAD FIELD OFFICE
620 EAST GREENE STREET
CARLSBAD, NEW MEXICO 88220-6292
TELEPHONE (505) 234-5972

This plan is submitted to provide permitting agencies with information necessary to allow an appraisal of the environmental effects associated with the proposed drilling operations. Within the context of typical drilling operations, this plan provides for protection of surface resources and other environmental components. This plan has been developed in conformity with the United States Geological Survey NTL-6 guidelines, Bureau of Land Management Oil and Gas Order No. 1, and in connection and consultation with the private surface owner of record, if other than the United States of America, as well as the Roswell District Office for the Bureau of Land Management and the United States Department of the Interior personnel.

PART #1:

1) Surface Location:
SE ¼ of Section 14, Township 21 South, Range 37 East, N.M.P.M.
Lea County, New Mexico
330' FSL, 990' FEL, Lot No. P

2) Bottom Hole Location:
SE ¼ of Section 14, Township 21 South, Range 37 East, N.M.P.M.
Lea County, New Mexico
330' FSL, 990' FEL, Lot No. P

3) Leases Issued: LC-032096-B

4) Record Lessee:
Apache Corporation 75%
Chevron USA 25%

5) Acres in Lease:
Township 21 South, Range 37 East, NMPM

SEC	12	N/2	320
	13	S/N, S/2	480
	14	E/E	160
	24	E/2	320
	11	E/2	320
	35	NE/4	<u>160</u>

Total Acres: 1,920.00

6) Acres Dedicated to Well:

There are 40.00 acres dedicated to this well, which takes in the UL P of Section 14, Township 21 South, Range 37 East, N.M.P.M., Lea County, New Mexico.

PART #2:

- 1) Existing Roads: From the intersection of St. Hwy. 318 and Co. Rd. # E38 (Jones City Road), go north on St. Hwy # 18 approx 0.7 miles. Turn left and go west approx. 0.1 mile. Turn left and go south approx 0.55 miles to proposed road survey. Follow flags SW approx 336' to the NE corner of proposed pad.
- 2) Planned Access:
 - A. Length and Width: Existing lease/access roads will be used into the well site. Application for a buried pipeline will be made if it becomes necessary.
 - B. Construction: The existing roads will be lightly graded and topped with compacted caliche as needed.
 - C. Turnouts: None required.
 - D. Culverts: None required.
 - E. Cuts and Fills: As needed.
 - F. Gates and Cattleguards: None required.
- 3) Location of Existing Wells:

Exhibit "F" shows existing wells within a 1-mile radius of the proposed well.
- 4) Location of Existing and/or Proposed Facilities:
 - A. There are production facilities within the area of the Lockhart Lease.
 - B. If the oil well proves to be commercial, any necessary production facilities will be installed on the drilling pad, and flow lines will be installed along the proposed and existing roads to the production facilities and storage tanks. See Exhibit "E-3" for flow-line route.
- 5) Location and Type of Water Supply:

Apache Corporation plans to drill the proposed well with fresh and brine water which will be transported by truck over proposed and existing access roads.
- 6) Source of Construction Materials:

Caliche for surfacing access roads and the wellsite pad will be obtained from the location itself or from BLM pits in the area.
- 7) Method of Handling Waste Material:

We will be utilizing a closed-loop mud system, all drill cuttings and fluids will be hauled off to a licensed disposal location.

Water produced during operations will be collected in tanks until hauled to an approved disposal system.

Oil produced during operation will be stored in tanks until sold.

Apache Corporation will comply with current laws and regulations pertaining to the disposal of human waste.

All waste materials will be contained to prevent scattering by the wind and will be removed from the well site within 30 days after drilling and/or completion operations are finished.
- 8) Ancillary Facilities: None planned.
- 9) Well Site Layout:
 - A. Exhibit "G" shows the relative location and dimensions of the well pad and major rig components. The pad and pit area have been staked and flagged.
 - B. Mat Size: 150' x 210' as shown on Exhibit "G".
 - C. Cut & Fill: Only minor leveling of the drilling site is anticipated.
 - D. The surface will be topped with compacted caliche.

- 10) Plans for Restoration of the Surface:
- A. After completion of drilling and/or completion operations, all equipment and other material, not needed for operations, will be removed. The location will be cleaned of all trash and junk to leave the well site in as aesthetically pleasing a condition as possible.
 - B. If the proposed well is non-productive, Apache Corporation will comply with all rehabilitation and/or vegetation requirements of the Bureau of Land Management, and such rehabilitation will be accomplished as expeditiously as possible. All pits will be filled and leveled within 90 days after abandonment.

- 11) Other Information:
- A. Topography: The wellsite and access road are located in the Querecho Plains and are relatively flat.
 - B. Soil: The proposed location, access road and production facilities consist of sandy soil. Slope in the proposed area ranges from zero (0) to five (5) degrees.
 - C. Flora and Fauna: Vegetation is one of a grassland environment and a scrub-grass, scrub disclimax community. The wildlife consists of rabbits, coyotes, rattlesnakes, lizards, dove, quail and other wildlife typical of the semi-arid desert land.
 - D. Ponds and Streams: There are no ponds, lakes, streams or feeder creeks in the immediate area.
 - E. Residences and Other Structures: There are no occupied residences or other structures on or near the proposed location.
 - F. Land Use: The land is used for grazing cattle.
 - G. Surface Ownership: The surface is owned by Eva Mae Tousaint (owner), Williams Stephens, Agent, P.O. Box 115, Eunice, NM 88231 505-394-3185
 - H. Archaeological, Historical, and Other Cultural Sites:

Formatted: Bullets and Numbering

Don Clifton, Archaeological Consultant, of Pep, New Mexico, will be conducting an archaeological survey of the proposed well which covers the drilling location, production facilities, and access road, including a corridor along said access road for power and flow lines. His report will be filed under separate cover.

I. Senior Representative (Manager, Engineering & Production):

Ross Murphy
Apache Corporation
Suite 1500 – Two Warren Place
6120 South Yale Avenue
Tulsa, Oklahoma 74136
(918) 491-4834

Project (Operations Engineer):

Kevin Mayes
Apache Corporation
Suite 1500 – Two Warren Place
6120 South Yale Avenue
Tulsa, Oklahoma 74136
(918) 491-4972

Drilling Operations (Operations Engineer):

Terry Gilbert
Apache Corporation
Suite 1500 – Two Warren Place
6120 South Yale Avenue
Tulsa, Oklahoma 74136
(918) 491-4801

CERTIFICATION

I HEREBY CERTIFY THAT I OR PERSONS UNDER MY SUPERVISION HAVE INSPECTED THE PROPOSED DRILL SITE AND THE ACCESS ROAD ROUTES, THAT I AM FAMILIAR WITH THE CONDITIONS THAT CURRENTLY EXIST, AND THAT THE STATEMENTS MADE IN THIS PLAN ARE TO THE BEST OF MY KNOWLEDGE ARE TRUE AND CORRECT, AND THAT THE WORK ASSOCIATED WITH THE OPERATIONS PROPOSED HEREIN WILL BE PERFORMED BY APACHE CORPORATION ITS CONTRACTORS OR ITS SUB-CONTRACTORS IS IN CONFORMANCE WITH THIS PLAN AND THE TERMS AND THE CONDITIONS UNDER WHICH IT IS APPROVED. THIS STATEMENT IS SUBJECT TO THE PROVISIONS OF U.S.C. 1001 FOR THE FILING OF A FALSE STATEMENT.

OPERATORS REPRESENTATIVES

BEFORE CONSTRUCTION

JOE T. JANICA

TIERRA EXPLORATION, INC.
P. O. BOX 2188
HOBBS, NEW MEXICO 88241
PHONE 505-391-8503
CELL 505-390-1598

DURING AND AFTER CONSTRUCTION

HAROLD SWAIN

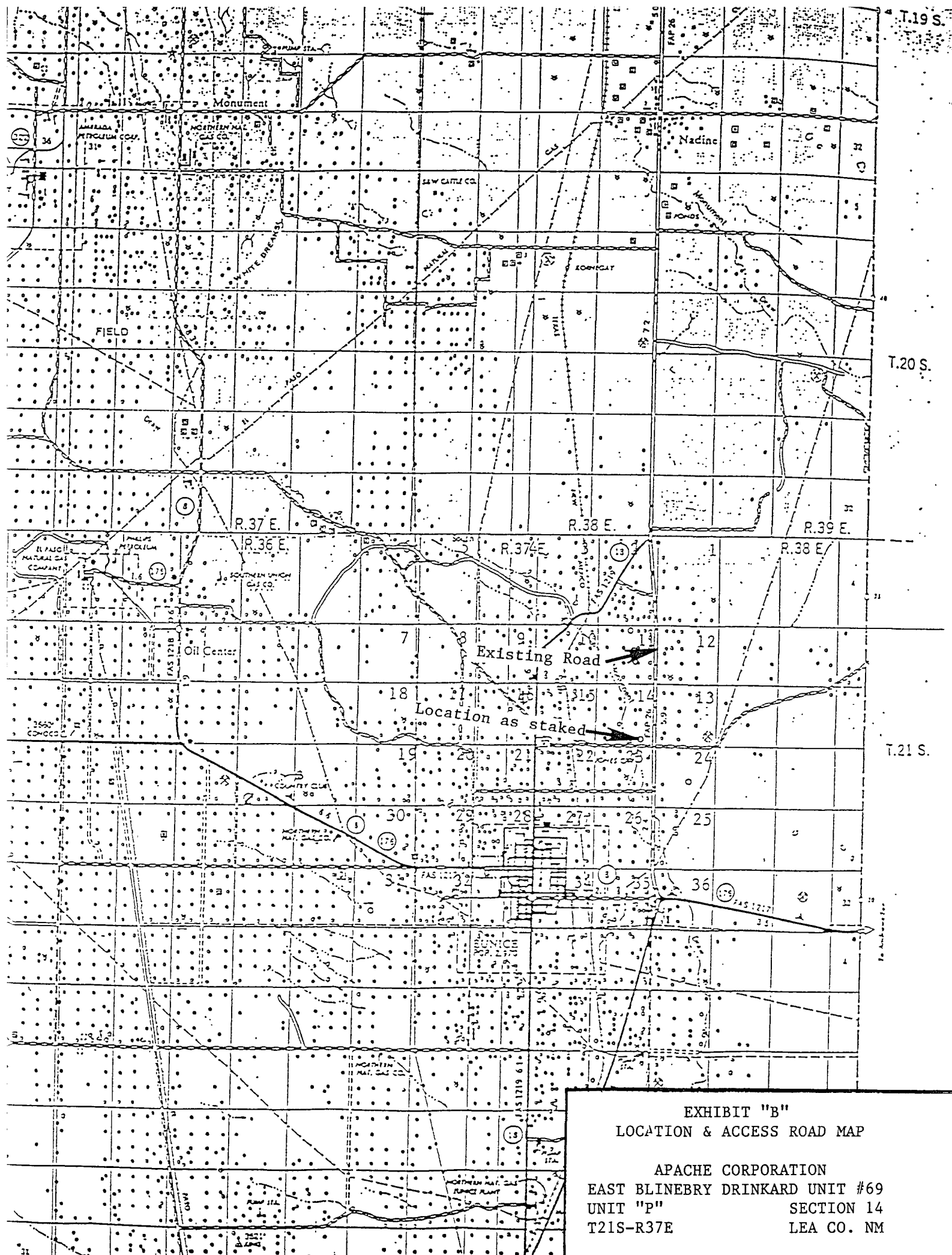
APACHE CORPORATION
6120 SOUTH YALE
SUITE 1500
TULSA OKLAHOMA 74136-4224
PHONE 432-527-3311
CELL PH. 505-390-4368

NAME; JOE JANICA

TITLE; PERMIT ENGINEER

DATE;

11/28/07



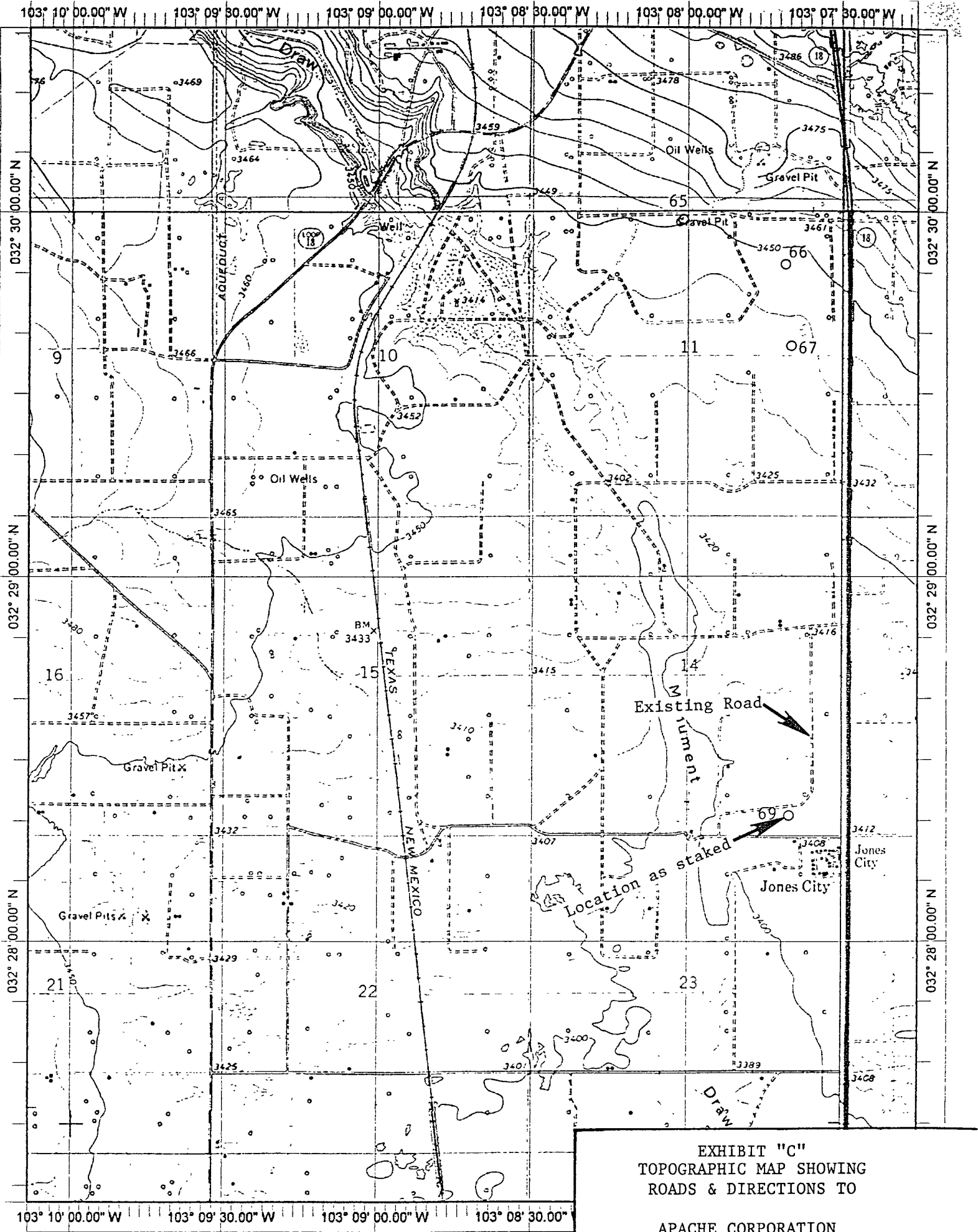


EXHIBIT "C"
TOPOGRAPHIC MAP SHOWING
ROADS & DIRECTIONS TO

APACHE CORPORATION
EAST BLINEBRY DRINKARD UNIT #69
UNIT "P" SECTION 14
T21S-R37E LEA CO. NM

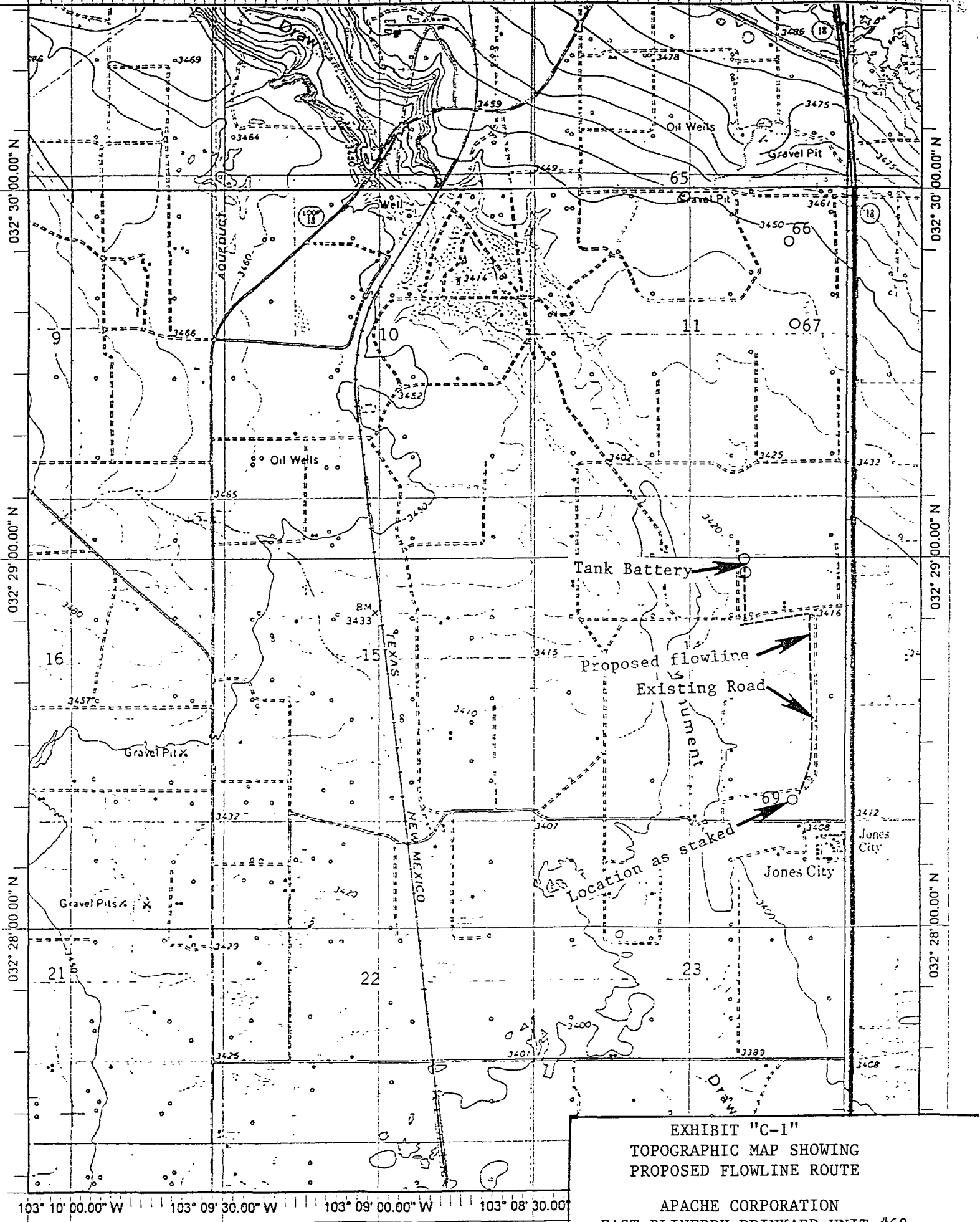
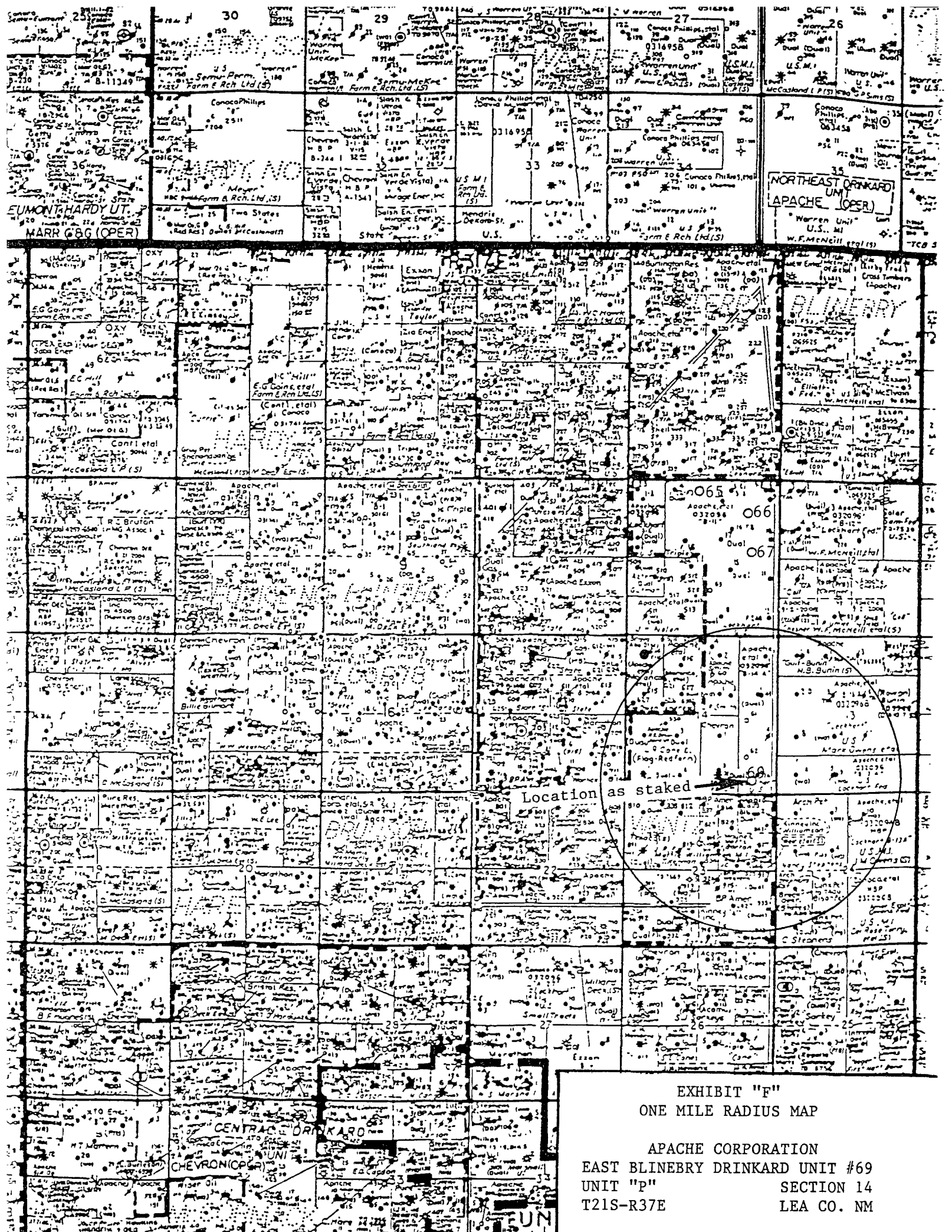


EXHIBIT "C-1"
TOPOGRAPHIC MAP SHOWING
PROPOSED FLOWLINE ROUTE

APACHE CORPORATION
EAST BLINEBRY DRINKARD UNIT #69
UNIT "P" SECTION 14
T21S-R37E LEA CO. NM



PECOS DISTRICT CONDITIONS OF APPROVAL

OPERATOR'S NAME:	Apache Corporation
LEASE NO.:	NMLC-032096B
WELL NAME & NO.:	69-East Blinebry Drinkard Unit
SURFACE HOLE FOOTAGE:	330' FSL & 990' FEL
BOTTOM HOLE FOOTAGE:	' F L & ' F L
LOCATION:	Section 14, T. 21 S., R 37 E., NMPM
COUNTY:	Lea County, New Mexico

TABLE OF CONTENTS

Standard Conditions of Approval (COA) apply to this APD. If any deviations to these standards exist or special COAs are required, the section with the deviation or requirement will be checked below.

- ☐ **General Provisions**
- ☐ **Permit Expiration**
- ☐ **Archaeology, Paleontology, and Historical Sites**
- ☐ **Noxious Weeds**
- ☐ **Special Requirements**
- ☒ **Construction**
 - Notification
 - Topsoil
 - Reserve Pit
 - Federal Mineral Material Pits
 - Well Pads
 - Roads
- ☐ **Road Section Diagram**
- ☒ **Drilling**
- ☒ **Production (Post Drilling)**
 - Well Structures & Facilities
 - Pipelines
 - Electric Lines
- ☐ **Reserve Pit Closure/Interim Reclamation**
- ☐ **Final Abandonment/Reclamation**

I. GENERAL PROVISIONS

The approval of the Application For Permit To Drill (APD) is in compliance with all applicable laws and regulations: 43 Code of Federal Regulations 3160, the lease terms, Onshore Oil and Gas Orders, Notices To Lessees, New Mexico Oil Conservation Division (NMOCD) Rules, National Historical Preservation Act As Amended, and instructions and orders of the Authorized Officer. Any request for a variance shall be submitted to the Authorized Officer on Form 3160-5, Sundry Notices and Report on Wells.

II. PERMIT EXPIRATION

If the permit terminates prior to drilling and drilling cannot be commenced within 60 days after expiration, an operator is required to submit Form 3160-5, Sundry Notices and Reports on Wells, requesting surface reclamation requirements for any surface disturbance. However, if the operator will be able to initiate drilling within 60 days after the expiration of the permit, the operator must have set the conductor pipe in order to allow for an extension of 60 days beyond the expiration date of the APD. (Filing of a Sundry Notice is required for this 60 day extension.)

III. ARCHAEOLOGICAL, PALEONTOLOGY & HISTORICAL SITES

Any cultural and/or paleontological resource discovered by the operator or by any person working on the operator's behalf shall immediately report such findings to the Authorized Officer. The operator is fully accountable for the actions of their contractors and subcontractors. The operator shall suspend all operations in the immediate area of such discovery until written authorization to proceed is issued by the Authorized Officer. An evaluation of the discovery shall be made by the Authorized Officer to determine the appropriate actions that shall be required to prevent the loss of significant cultural or scientific values of the discovery. The operator shall be held responsible for the cost of the proper mitigation measures that the Authorized Officer assesses after consultation with the operator on the evaluation and decisions of the discovery. Any unauthorized collection or disturbance of cultural or paleontological resources may result in a shutdown order by the Authorized Officer.

IV. NOXIOUS WEEDS

The operator shall be held responsible if noxious weeds become established within the areas of operations. Weed control shall be required on the disturbed land where noxious weeds exist, which includes the roads, pads, associated pipeline corridor, and adjacent land affected by the establishment of weeds due to this action. The operator shall consult with the Authorized Officer for acceptable weed control methods, which include following EPA and BLM requirements and policies.

V. CONSTRUCTION

A. NOTIFICATION

The BLM shall administer compliance and monitor construction of the access road and well pad. Notify the Hobbs Field Station at (505) 393-3612 at least 3 working days prior to commencing construction of the access road and/or well pad.

When construction operations are being conducted on this well, the operator shall have the approved APD and Conditions of Approval (COA) on the well site and they shall be made available upon request by the Authorized Officer.

B. TOPSOIL

There is no measurable soil on this well pad to stockpile. No topsoil stockpile is required.

C. RESERVE PITS

Operator will be utilizing a closed-loop mud system: No Pits.

The operator shall properly dispose of drilling contents at an authorized disposal site.

D. FEDERAL MINERAL MATERIALS PIT

If the operator elects to surface the access road and/or well pad, mineral materials extracted during construction of the reserve pit may be used for surfacing the well pad and access road and other facilities on the lease.

Payment shall be made to the BLM prior to removal of any additional federal mineral materials from any site other than the reserve pit. Call the Carlsbad Field Office at (505) 234-5972.

E. WELL PAD SURFACING

Surfacing of the well pad is not required.

If the operator elects to surface the well pad, the surfacing material may be required to be removed at the time of reclamation.

The well pad shall be constructed in a manner which creates the smallest possible surface disturbance, consistent with safety and operational needs.

F. ON LEASE ACCESS ROADS

Road Width

The access road shall have a driving surface that creates the smallest possible surface disturbance and does not exceed fourteen (14) feet in width. The maximum width of surface disturbance, when constructing the access road, shall not exceed thirty (30) feet.

Surfacing

Surfacing material is not required on the new access road driving surface. If the operator elects to surface the new access road or pad, the surfacing material may be required to be removed at the time of reclamation.

Where possible, no improvements should be made on the unsurfaced access road other than to remove vegetation as necessary, road irregularities, safety issues, or to fill low areas that may sustain standing water.

The Authorized Officer reserves the right to require surfacing of any portion of the access road at any time deemed necessary. Surfacing may be required in the event the road deteriorates, erodes, road traffic increases, or it is determined to be beneficial for future field development. The surfacing depth and type of material will be determined at the time of notification.

Crowning

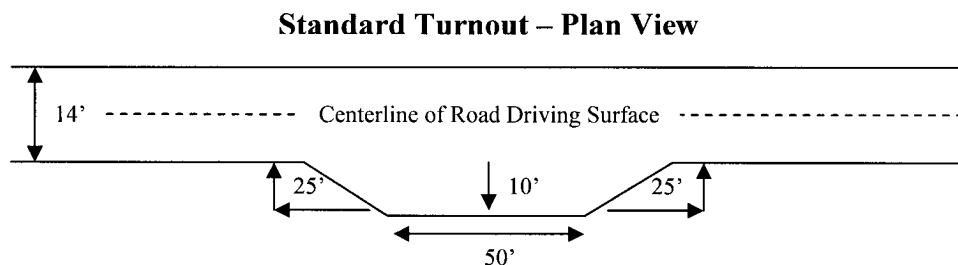
Crowning shall be done on the access road driving surface. The road crown shall have a grade of approximately 2% (i.e., a 1" crown on a 14' wide road). The road shall conform to Figure 1; cross section and plans for typical road construction.

Ditching

Ditching shall be required on both sides of the road.

Turnouts

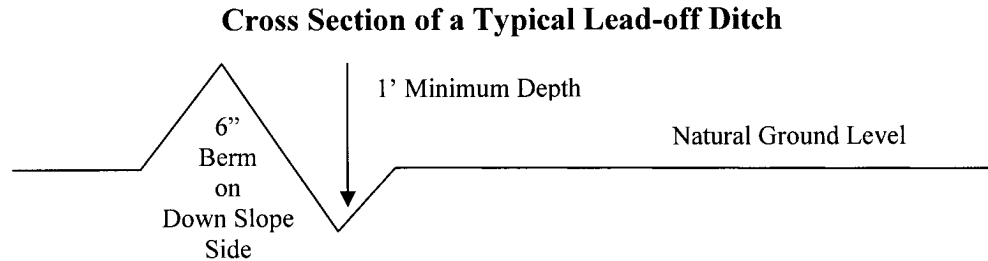
Vehicle turnouts shall be constructed on the road. Turnouts shall be intervisible with interval spacing distance less than 1000 feet. Turnouts shall be constructed on all blind curves. Turnouts shall conform to the following diagram:



Drainage

Drainage control systems shall be constructed on the entire length of road (e.g. ditches, sidehill outslowing and inslaping, lead-off ditches, culvert installation, and low water crossings).

A typical lead-off ditch has a minimum depth of 1 foot below and a berm of 6 inches above natural ground level. The berm shall be on the down-slope side of the lead-off ditch.



All lead-off ditches shall be graded to drain water with a 1 percent minimum to 3 percent maximum ditch slope. The spacing interval are variable for lead-off ditches and shall be determined according to the formula for spacing intervals of lead-off ditches, but may be amended depending upon existing soil types and centerline road slope (in %);

Formula for Spacing Interval of Lead-off Ditches

Example - On a 4% road slope that is 400 feet long, the water flow shall drain water into a lead-off ditch. Spacing interval shall be determined by the following formula:

$$400 \text{ foot road with } 4\% \text{ road slope: } \frac{400'}{4\%} + 100' = 200' \text{ lead-off ditch interval}$$

Culvert Installations

Appropriately sized culvert(s) shall be installed at the deep waterway channel flow crossing.

Cattleguards

An appropriately sized cattleguard(s) sufficient to carry out the project shall be installed and maintained at fence crossing(s).

Any existing cattleguard(s) on the access road shall be repaired or replaced if they are damaged or have deteriorated beyond practical use. The operator shall be responsible for the condition of the existing cattleguard(s) that are in place and are utilized during lease operations.

A gate shall be constructed and fastened securely to H-braces.

Fence Requirement

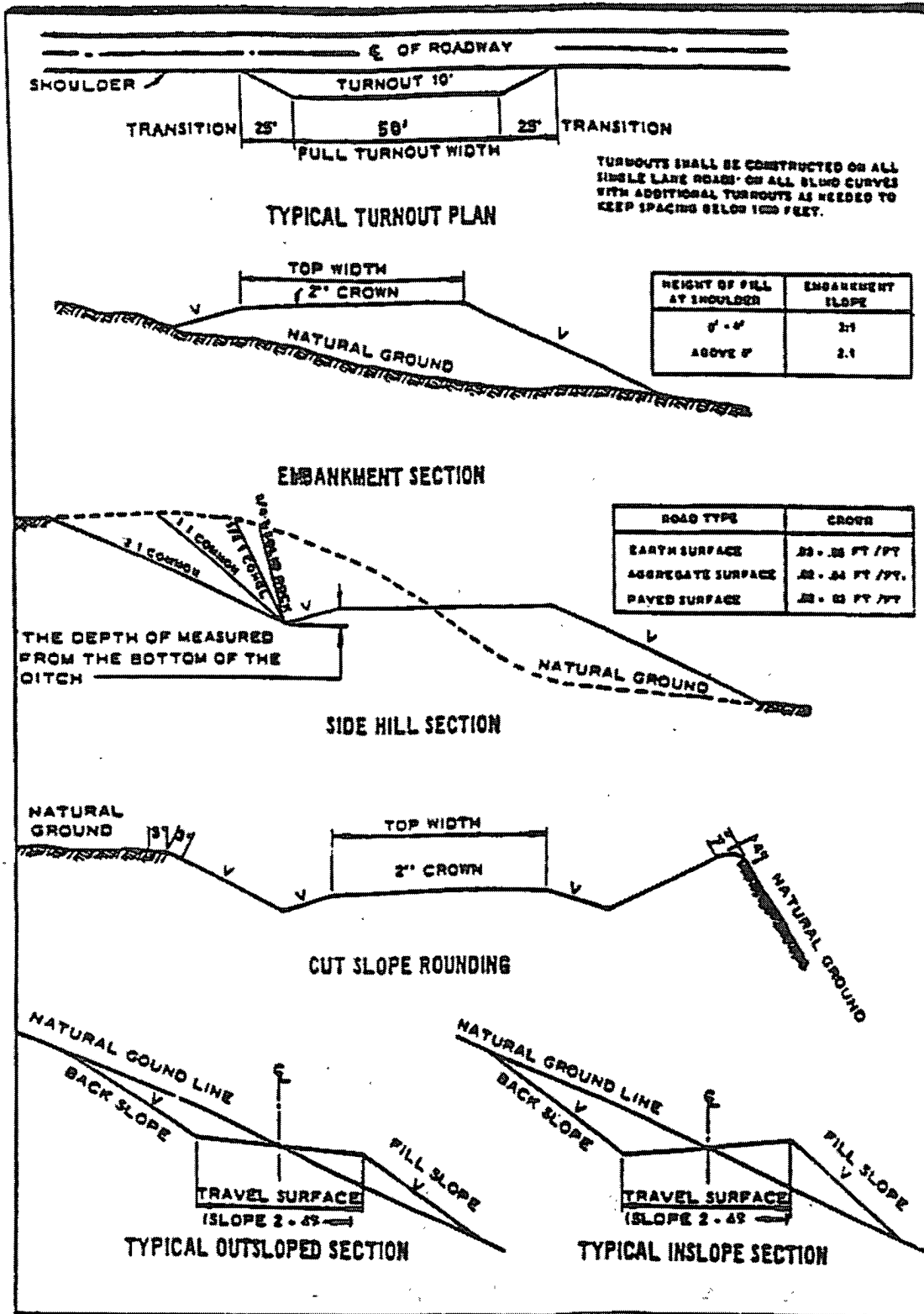
Where entry is required across a fence line, the fence shall be braced and tied off on both sides of the passageway prior to cutting.

The operator shall notify the private surface landowner or the grazing allotment holder prior to crossing any fence(s).

Public Access

Public access on this road shall not be restricted by the operator without specific written approval granted by the Authorized Officer.

Figure 1 – Cross Sections and Plans For Typical Road Sections



VI. DRILLING

A. DRILLING OPERATIONS REQUIREMENTS

The BLM is to be notified a minimum of 4 hours in advance for a representative to witness:

- a. Spudding well
- b. Setting and/or Cementing of all casing strings
- c. BOPE tests

☒ **Lea County**

Call the Hobbs Field Station, 414 West Taylor, Hobbs NM 88240,
(575) 393-3612

- 1. A Hydrogen Sulfide (H₂S) Drilling Plan should be activated 500 feet prior to drilling into the **Blinebry** formation. **Hydrogen Sulfide has been reported measuring 200-800 ppm in gas streams and 400-130,000 ppm in STVs.**
- 2. Unless the production casing has been run and cemented or the well has been properly plugged, the drilling rig shall not be removed from over the hole without prior approval.

B. CASING

- 1. The **8-5/8** inch surface casing shall be set **a minimum of 25 feet into the Rustler Anhydrite at approximately 1325** feet and cemented to the surface. **Fresh water mud to be used to this depth.**
 - a. If cement does not circulate to the surface, the appropriate BLM office shall be notified and a temperature survey utilizing an electronic type temperature survey with a surface log readout will be used or a cement bond log shall be run to verify the top of the cement.
 - b. Wait on cement (WOC) time for a primary cement job will be a minimum 18 hours for a water basin, 24 hours in the potash area, or 500 pounds compressive strength, whichever is greater. (This is to include the lead cement). **Please provide WOC times to inspector for cement slurries.**
 - c. Wait on cement (WOC) time for a remedial job will be a minimum of 4 hours after bringing cement to surface or 500 pounds compressive strength, whichever is greater.
 - d. If cement falls back, remedial action will be done prior to drilling out that string.

Possible lost circulation in the Glorietta.

2. The minimum required fill of cement behind the **5-1/2** inch production casing is:

☒ Cement to surface. If cement does not circulate, contact the appropriate BLM office. **Please provide WOC times to inspector for cement slurries.**

3. If hardband drill pipe is rotated inside casing, returns will be monitored for metal. If metal is found in samples, drill pipe will be pulled and rubber protectors which have a larger diameter than the tool joints of the drill pipe will be installed prior to continuing drilling operations.

C. PRESSURE CONTROL

1. All blowout preventer (BOP) and related equipment (BOPE) shall comply with well control requirements as described in Onshore Oil and Gas Order No. 2 and API RP 53 Sec. 17. **Operator has supplied information based on the BHP in offset wells that the BHP will not exceed 2000 psi. Therefore, a 2M system is approved.**
2. The appropriate BLM office shall be notified a minimum of 4 hours in advance for a representative to witness the tests.
 - a. The tests shall be done by an independent service company.
 - b. The results of the test shall be reported to the appropriate BLM office.
 - c. All tests are required to be recorded on a calibrated test chart. A copy of the BOP/BOPE test chart and a copy of independent service company test will be submitted to the appropriate BLM office.
 - d. The BOP/BOPE test shall include a low pressure test from 250 to 300 psi. The test will be held for a minimum of 10 minutes if test is done with a test plug and 30 minutes without a test plug.

Engineer on call phone (after hours): Carlsbad: (575) 706-2779

WWI 010508

VII. PRODUCTION (POST DRILLING)

A. WELL STRUCTURES & FACILITIES

Placement of Production Facilities

Production facilities should be placed on the well pad to allow for maximum interim recontouring and revegetation of the well location.

Containment Structures

The containment structure shall be constructed to hold the capacity of the entire contents of the largest tank, plus 24 hour production, unless more stringent protective requirements are deemed necessary by the Authorized Officer.

Painting Requirement

All above-ground structures including meter housing that are not subject to safety requirements shall be painted a flat non-reflective paint color
Shale Green, Munsell Soil Color Chart # 5Y 4/2

B. PIPELINES

STANDARD STIPULATIONS FOR SURFACE INSTALLED PIPELINES

A copy of the APD and attachments, including stipulations, survey plat and/or map, will be on location during construction. BLM personnel may request to you a copy of your permit during construction to ensure compliance with all stipulations.

Holder agrees to comply with the following stipulations to the satisfaction of the Authorized Officer:

1. The holder shall indemnify the United States against any liability for damage to life or property arising from the occupancy or use of public lands under this grant.
2. The holder shall comply with all applicable Federal laws and regulations existing or hereafter enacted or promulgated. In any event, the holder shall comply with the Toxic Substances Control Act of 1976 as amended, 15 USC 2601 et seq. (1982) with regards to any toxic substances that are used, generated by or stored on the right-of-way or on facilities authorized under this right-of-way grant. (See 40 CFR, Part 702-799 and especially, provisions on polychlorinated biphenyls, 40 CFR 761.1-761.193.) Additionally, any release of toxic substances (leaks, spills, etc.) in excess of the reportable quantity established by 40 CFR, Part 117 shall be reported as required by the Comprehensive Environmental Response, Compensation, and Liability Act, section 102b. A copy of any report required or requested by any Federal agency or State government as a result of a reportable release or spill of any toxic substances shall be furnished to the authorized officer concurrent with the filing of the reports to the involved Federal agency or State government.
3. The holder agrees to indemnify the United States against any liability arising from the release of any hazardous substance or hazardous waste (as these terms are defined in the

Comprehensive Environmental Response, Compensation and Liability Act of 1980, 42 U.S.C. 9601, et seq. or the Resource Conservation and Recovery Act, 42 U.S.C. 6901, et seq.) on the Right-of-Way (unless the release or threatened release is wholly unrelated to activity of the Right-of-Way holder's activity on the Right-of-Way), or resulting from the activity of the Right-of-Way holder on the Right-of-Way. This agreement applies without regard to whether a release is caused by the holder, its agent, or unrelated third parties.

4. The holder shall be liable for damage or injury to the United States to the extent provided by 43 CFR Sec. 2883.1-4. The holder shall be held to a standard of strict liability for damage or injury to the United States resulting from pipe rupture, fire, or spills caused or substantially aggravated by any of the following within the right-of-way or permit area:

- a. Activities of the holder including, but not limited to construction, operation, maintenance, and termination of the facility.
- b. Activities of other parties including, but not limited to:
 - (1) Land clearing.
 - (2) Earth-disturbing and earth-moving work.
 - (3) Blasting.
 - (4) Vandalism and sabotage.
- c. Acts of God.

The maximum limitation for such strict liability damages shall not exceed one million dollars (\$1,000,000) for any one event, and any liability in excess of such amount shall be determined by the ordinary rules of negligence of the jurisdiction in which the damage or injury occurred.

This section shall not impose strict liability for damage or injury resulting primarily from an act of war or from the negligent acts or omissions of the United States.

5. If, during any phase of the construction, operation, maintenance, or termination of the pipeline, any oil, salt water, or other pollutant should be discharged from the pipeline system, impacting Federal lands, the control and total removal, disposal, and cleaning up of such oil, salt water, or other pollutant, wherever found, shall be the responsibility of the holder, regardless of fault. Upon failure of the holder to control, dispose of, or clean up such discharge on or affecting Federal lands, or to repair all damages resulting therefrom, on the Federal lands, the Authorized Officer may take such measures as he deems necessary to control and clean up the discharge and restore the area, including, where appropriate, the aquatic environment and fish and wildlife habitats, at the full expense of the holder. Such action by the Authorized Officer shall not relieve the holder of any responsibility as provided herein.

6. All construction and maintenance activity will be confined to the authorized right-of-way width of 25 feet.
7. No blading or clearing of any vegetation will be allowed unless approved in writing by the Authorized Officer.
8. The holder shall install the pipeline on the surface in such a manner that will minimize suspension of the pipeline across low areas in the terrain. In hummocky or dune areas, the pipeline will be "snaked" around hummocks and dunes rather than suspended across these features.
9. The pipeline shall be buried with a minimum of 24 inches under all roads, "two-tracks," and trails. Burial of the pipe will continue for 20 feet on each side of each crossing. The condition of the road, upon completion of construction, shall be returned to at least its former state with no bumps or dips remaining in the road surface.
10. The holder shall minimize disturbance to existing fences and other improvements on public lands. The holder is required to promptly repair improvements to at least their former state. Functional use of these improvements will be maintained at all times. The holder will contact the owner of any improvements prior to disturbing them. When necessary to pass through a fence line, the fence shall be braced on both sides of the passageway prior to cutting of the fence. No permanent gates will be allowed unless approved by the Authorized Officer.
11. In those areas where erosion control structures are required to stabilize soil conditions, the holder will install such structures as are suitable for the specific soil conditions being encountered and which are in accordance with sound resource management practices.
12. Excluding the pipe, all above-ground structures not subject to safety requirement shall be painted by the holder to blend with the natural color of the landscape. The paint used shall be a color which simulates "Standard Environmental Colors" – **Shale Green**, Munsell Soil Color No. 5Y 4/2; designated by the Rocky Mountain Five State Interagency Committee.
13. The pipeline will be identified by signs at the point of origin and completion of the right-of-way and at all road crossings. At a minimum, signs will state the holder's name, BLM serial number, and the product being transported. Signs will be maintained in a legible condition for the life of the pipeline.
14. The holder shall not use the pipeline route as a road for purposes other than routine maintenance as determined necessary by the Authorized Officer in consultation with the holder. The holder will take whatever steps are necessary to ensure that the pipeline route is not used as a roadway.
15. Any cultural and/or paleontological resource (historic or prehistoric site or object)

discovered by the holder, or any person working on his behalf, on public or Federal land shall be immediately reported to the authorized officer. Holder shall suspend all operations in the immediate area of such discovery until written authorization to proceed is issued by the authorized officer. An evaluation of the discovery will be made by the authorized officer to determine appropriate cultural or scientific values. The holder will be responsible for the cost of evaluation and any decision as to proper mitigation measures will be made by the authorized officer after consulting with the holder.

(March 1989)

C. ELECTRIC LINES

STANDARD STIPULATIONS FOR OVERHEAD ELECTRIC DISTRIBUTION LINES

A copy of the grant and attachments, including stipulations, survey plat and/or map, will be on location during construction. BLM personnel may request to you a copy of your permit during construction to ensure compliance with all stipulations.

Holder agrees to comply with the following stipulations to the satisfaction of the Authorized Officer:

1. The holder shall indemnify the United States against any liability for damage to life or property arising from the occupancy or use of public lands under this grant.
2. The holder shall comply with all applicable Federal laws and regulations existing or hereafter enacted or promulgated. In any event, the holder shall comply with the Toxic Substances Control Act of 1976 as amended, 15 USC 2601 et seq. (1982) with regards to any toxic substances that are used, generated by or stored on the right-of-way or on facilities authorized under this right-of-way grant. (See 40 CFR, Part 702-799 and especially, provisions on polychlorinated biphenyls, 40 CFR 761.1-761.193.) Additionally, any release of toxic substances (leaks, spills, etc.) in excess of the reportable quantity established by 40 CFR, Part 117 shall be reported as required by the Comprehensive Environmental Response, Compensation, and Liability Act, section 102b. A copy of any report required or requested by any Federal agency or State government as a result of a reportable release or spill of any toxic substances shall be furnished to the authorized officer concurrent with the filing of the reports to the involved Federal agency

or State government.

3. The holder agrees to indemnify the United States against any liability arising from the release of any hazardous substance or hazardous waste (as these terms are defined in the Comprehensive Environmental Response, Compensation and Liability Act of 1980, 42 U.S.C. 9601, et seq. or the Resource Conservation and Recovery Act, 42 U.S.C. 6901, et seq.) on the Right-of-Way (unless the release or threatened release is wholly unrelated to the Right-of-Way holder's activity on the Right-of-Way), or resulting from the activity of the Right-of-Way holder on the Right-of-Way. This agreement applies without regard to whether a release is caused by the holder, its agent, or unrelated third parties.

4. There will be no clearing or blading of the right-of-way unless otherwise agreed to in writing by the Authorized Officer.

5. Powerlines shall be constructed in accordance to standards outlined in "Suggested Practices for Raptor Protection on Powerlines, " Raptor Research Foundation, Inc., 1981. The holder shall assume the burden and expense of proving that pole designs not shown in the above publication are "raptor safe." Such proof shall be provided by a raptor expert approved by the Authorized Officer. The BLM reserves the right to require modification or additions to all powerline structures placed on this right-of-way, should they be necessary to ensure the safety of large perching birds. Such modifications and/or additions shall be made by the holder without liability or expense to the United States.

6. The holder shall minimize disturbance to existing fences and other improvements on public lands. The holder is required to promptly repair improvements to at least their former state. Functional use of these improvements will be maintained at all times. The holder will contact the owner of any improvements prior to disturbing them. When necessary to pass through a fence line, the fence shall be braced on both sides of the passageway prior to cutting the fence. No permanent gates will be allowed unless approved by the Authorized Officer.

7. The BLM serial number assigned to this authorization shall be posted in a permanent, conspicuous manner where the power line crosses roads and at all serviced facilities. Numbers will be at least two inches high and will be affixed to the pole nearest the road crossing and at the facilities served.

8. Upon cancellation, relinquishment, or expiration of this grant, the holder shall comply with those abandonment procedures as prescribed by the Authorized Officer.

9. All surface structures (poles, lines, transformers, etc.) shall be removed within 180 days of abandonment, relinquishment, or termination of use of the serviced facility or facilities or within 180 days of abandonment, relinquishment, cancellation, or expiration of this grant, whichever comes first. This will not apply where the power line extends service to an active, adjoining facility or facilities.

10. Any cultural and/or paleontological resource (historic or prehistoric site or object)

discovered by the holder, or any person working on his behalf, on public or Federal land shall be immediately reported to the Authorized Officer. Holder shall suspend all operations in the immediate area of such discovery until written authorization to proceed is issued by the Authorized Officer. An evaluation of the discovery will be made by the Authorized Officer to determine appropriate actions to prevent the loss of significant cultural or scientific values. The holder will be responsible for the cost of evaluation and any decision as to proper mitigation measures will be made by the Authorized Officer after consulting with the holder.

11. Special Stipulations:

- For reclamation remove poles, lines, transformer, etc. and dispose of properly.
- Fill in any holes from the poles removed.
- See attached reclamation plans.

VIII. INTERIM RECLAMATION & RESERVE PIT CLOSURE

A. INTERIM RECLAMATION

If the well is a producer, interim reclamation shall be conducted on the well site in accordance with the orders of the Authorized Officer. The operator shall submit a Sundry Notices and Reports on Wells (Notice of Intent), Form 3160-5, prior to conducting interim reclamation.

During the life of the development, all disturbed areas not needed for active support of production operations should undergo interim reclamation in order to minimize the environmental impacts of development on other resources and uses.

Operators should work with BLM surface management specialists to devise the best strategies to reduce the size of the location. Any reductions should allow for remedial well operations, as well as safe and efficient removal of oil and gas.

During reclamation, the removal of caliche is important to increasing the success of revegetating the site. Removed caliche may be used for road repairs, fire walls or for building other roads and locations. In order to operate the well or complete workover operations, it may be necessary to drive, park and operate on restored interim vegetation within the previously disturbed area. Disturbing revegetated areas for production or workover operations will be allowed. If there is significant disturbance and loss of vegetation, the area will need to be revegetated. Communicate with the appropriate BLM office for any exceptions/exemptions if needed.

Seed Mixture 1, for Loamy Sites

The holder shall seed all disturbed areas with the seed mixture listed below. The seed mixture shall be planted in the amounts specified in pounds of pure live seed (PLS)* per acre. There shall be no primary or secondary noxious weeds in the seed mixture. Seed will be tested and the viability testing of seed will be done in accordance with State law(s) and within nine (9) months prior to purchase. Commercial seed will be either certified or registered seed. The seed container will be tagged in accordance with State law(s) and available for inspection by the authorized officer.

Seed will be planted using a drill equipped with a depth regulator to ensure proper depth regulator to ensure proper depth of planting where drilling is possible. The seed mixture will be evenly and uniformly planted over the disturbed area (small/heavier seeds have a tendency to drop the bottom of the drill and are planted first). The holder shall take appropriate measures to ensure this does not occur. Where drilling is not possible, seed will be broadcast and the area shall be raked or chained to cover the seed. When broadcasting the seed, the pounds per acre are to be doubled. The seeding will be repeated until a satisfactory stand is established as determined by the authorized officer. Evaluation of growth will not be made before completion of at least one full growing season after seeding.

Species to be planted in pounds of pure live seed* per acre:

<u>Species</u>	<u>lb/acre</u>
Plains lovegrass (<i>Eragrostis intermedia</i>)	0.5
Sand dropseed (<i>Sporobolus cryptandrus</i>)	1.0
Sideoats grama (<i>Bouteloua curtipendula</i>)	5.0

*Pounds of pure live seed:

Pounds of seed x percent purity x percent germination = pounds pure live seed

X. FINAL ABANDONMENT & REHABILITATION REQUIREMENTS

Upon abandonment of the well and/or when the access road is no longer in service the Authorized Officer shall issue instructions and/or orders for surface reclamation and restoration of all disturbed areas.

On private surface/federal mineral estate land the reclamation procedures on the road and well pad shall be accomplished in accordance with the private surface land owner agreement.