

District I
1625 N. French Dr., Hobbs, NM 88240
District II
1301 W. Grand Avenue, Artesia, NM 88210
District III
1000 Rio Brazos Rd., Aztec, NM 87410
District IV
1220 S. St. Francis Dr., Santa Fe, NM 87505

State of New Mexico
Energy, Minerals & Natural Resources Department
OIL CONSERVATION DIVISION
1220 South St. Francis Dr.
Santa Fe, NM 87505

Form C-102
Revised October 12, 2005
Submit to Appropriate District Office
State Lease - 4 Copies
Fee Lease - 3 Copies

☐ AMENDED REPORT

WELL LOCATION AND ACREAGE DEDICATION PLAT

| | | |
|---|---|---|
| ¹ API Number 30-025-08800 ✓ | ² Pool Code 79240 | ³ Pool Name JALMAT;TAN-Y-7R (GAS) |
| ⁴ Property Code 302433 ✓ | ⁵ Property Name STATE A A/C 2 | ⁶ Well Number 46 ✓ |
| ⁷ OGRID No. 194849 ✓ | ⁸ Operator Name PETROHAWK OPERATING COMPANY | ⁹ Elevation |

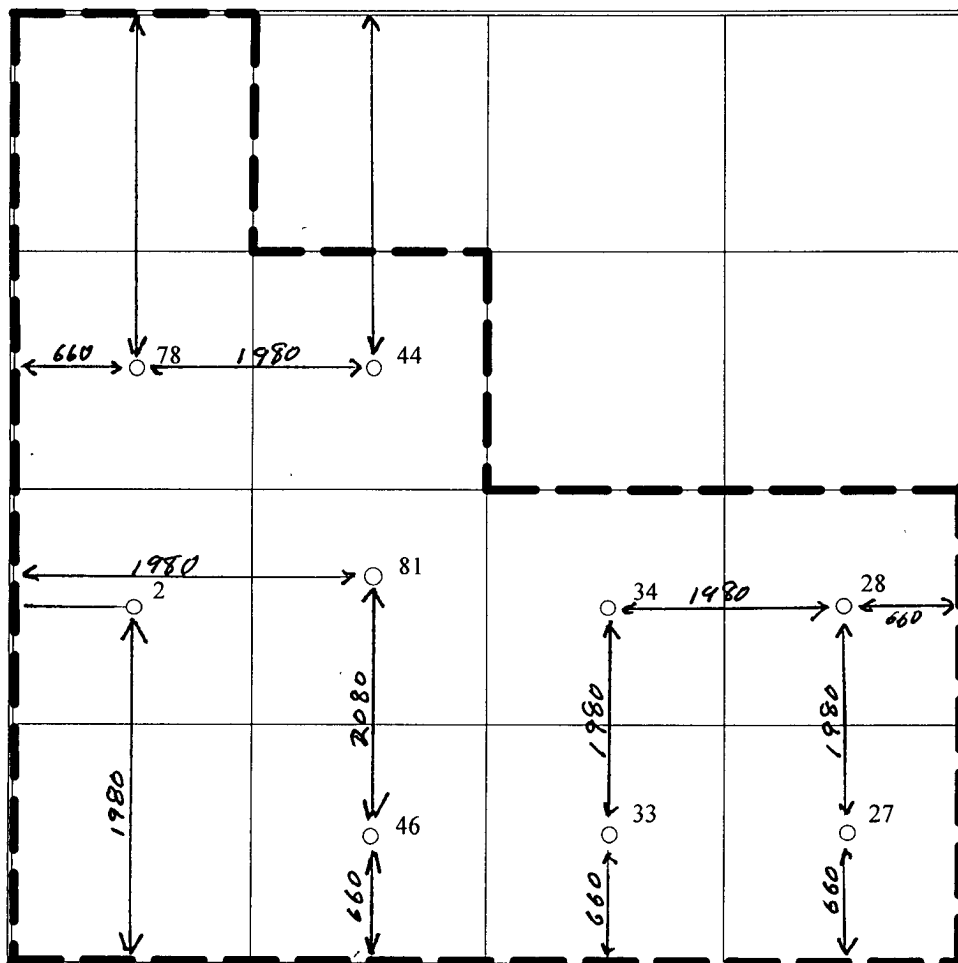
¹⁰ Surface Location

| | | | | | | | | | |
|--------------------|--------------|-----------------|--------------|---------|----------------------|---------------------------|-----------------------|------------------------|-----------------|
| UL or lot no. N | Section 5 | Township 22S | Range 36E | Lot Idn | Feet from the 660 | North/South line SOUTH | Feet from the 1980 | East/West line WEST | County LEA ✓ |
|--------------------|--------------|-----------------|--------------|---------|----------------------|---------------------------|-----------------------|------------------------|-----------------|

¹¹ Bottom Hole Location If Different From Surface

| | | | | | | | | | |
|--|---------|-------------------------------|-------|----------------------------------|---------------|--|---------------|----------------|--------|
| UL or lot no. | Section | Township | Range | Lot Idn | Feet from the | North/South line | Feet from the | East/West line | County |
| ¹² Dedicated Acres 440.330 | | ¹³ Joint or Infill | | ¹⁴ Consolidation Code | | ¹⁵ Order No. NSP-1636-C and SD-200804 (dated February 6, 2008) | | | |

No allowable will be assigned to this completion until all interests have been consolidated or a non-standard unit has been approved by the division.



¹⁷ OPERATOR CERTIFICATION

I hereby certify that the information contained herein is true and complete to the best of my knowledge and belief, and that this organization either owns a working interest or unleased mineral interest in the land including the proposed bottom hole location or has a right to drill this well at this location pursuant to a contract with an owner of such a mineral or working interest, or to a voluntary pooling agreement or a compulsory pooling order heretofore entered by the division

Signature: *[Signature]* Date: 02/13/2008

Printed Name: **RECEIVED**

FEB 27 2008

¹⁸ SURVEYOR CERTIFICATION

I hereby certify that the well location shown on this plat was plotted from field notes of actual surveys made by me or under my supervision, and that the same is true and correct to the best of my belief

Date of Survey
Signature and Seal of Professional Surveyor

Certificate Number