

Submit 3 Copies To Appropriate District
Office
District I
1625 N. French Dr., Hobbs, NM 87240
District II
1301 W. Grand Ave., Artesia, NM 88210
District III
1000 Rio Brazos Rd., Aztec, NM 87410
District IV
1220 S. St. Francis Dr., Santa Fe, NM 87505

State of New Mexico
Energy, Minerals and Natural Resources

Form C-103
May 27, 2004

OIL CONSERVATION DIVISION
1220 South St. Francis Dr.
Santa Fe, NM 87505

WELL API NO. 30-025-37382
5. Indicate Type of Lease STATE <input checked="" type="checkbox"/> FEE <input type="checkbox"/>
6. State Oil & Gas Lease No. B-1431

SUNDRY NOTICES AND REPORTS ON WELLS
(DO NOT USE THIS FORM FOR PROPOSALS TO DRILL OR TO DEEPLY REEVALUATE AN OIL WELL IN A DIFFERENT RESERVOIR USE "APPLICATION FOR PERMIT" (FORM C-101) FOR SUCH PROPOSALS.)

1. Type of Well: Oil Well <input type="checkbox"/> Gas Well <input checked="" type="checkbox"/> Other	7. Lease Name or Unit Agreement Name: SUNFLOWER 28 STATE
2. Name of Operator BP AMERICA PRODUCTION COMPANY	8. Well Number 2
3. Address of Operator 501 WESTLAKE PARK BLVD, RM 6.121, HOUSTON, TX 77079	9. GRID Number 192463- 778
4. Well Location Unit Letter M : 690 feet from the South line and 1160 feet from the West line Section 28 Township 17S Range 34E NMPM County IEA	10. Pool name or Wildcat VACUUM MORROW
11. Elevation (Show whether DR, RKB, RT, GR, etc.) 4064	
Pit or Below-grade Tank Application <input type="checkbox"/> or Closure <input type="checkbox"/> Pit type NA Depth to Groundwater Distance from nearest fresh water well Distance from nearest surface water Pit Liner Thickness: mil Below-Grade Tank: Volume bbls; Construction Material	

12. Check Appropriate Box to Indicate Nature of Notice, Report, or Other Data
NOTICE OF INTENTION TO: SUBSEQUENT REPORT OF:

PERFORM REMEDIAL WORK <input checked="" type="checkbox"/>	PLUG AND ABANDON <input type="checkbox"/>	REMEDIAL WORK <input type="checkbox"/>	ALTERING CASING <input type="checkbox"/>
TEMPORARILY ABANDON <input type="checkbox"/>	CHANGE PLANS <input type="checkbox"/>	COMMENCE DRILLING OPNS. <input type="checkbox"/>	PLUG AND ABANDONMENT <input type="checkbox"/>
PULL OR ALTER CASING <input type="checkbox"/>	MULTIPLE COMPLETION <input type="checkbox"/>	CASING TEST AND CEMENT JOB <input type="checkbox"/>	
OTHER: <input type="checkbox"/>		OTHER: <input type="checkbox"/>	

13. Describe proposed or completed operations. (Clearly state all pertinent details, and give pertinent dates, including estimated date of starting any proposed work). SEE RULE 1103. For Multiple Completions: Attach wellbore diagram of proposed completion or recompletion.

TD: 13480, PBID: 13434, Perf. Interval: 13124-126 (3 holes), 13150-155 (21 holes), 13272-274 (3 holes)

The Sunflower 28 State #2 was given an NOV for "failing MIT" due to pressure being on the tubing-casing annulus. Attached are procedures to 1) abandon the Morrow formation, 2) eliminate communication (i.e. source of pressure on the tubing-casing annulus) and 3) recomplete to the Canyon formation.

I hereby certify that the information above is true and complete to the best of my knowledge and belief. I further certify that any pit or below-grade tank has been/will be constructed or closed according to NMOCD guidelines ☐ , a general permit ☐ or an (attached) alternative OCD-approved plan ☐

SIGNATURE Deann Smyers TITLE REGULATORY STAFF ASSISTANT DATE 2/22/2008
Type or print name DEANN SMYERS E-mail address: CHERYL.SMYERS@BP.COM Telephone No. 281-366-4395

For State Use Only

APPROVED BY Chris Williams TITLE OCD DISTRICT SUPERVISOR/GENERAL MANAGER DATE MAR 10 2008
Conditions of Approval, if any:

API No. 30 - 025 - 37382

690' FSL & 1160' FWL
Section 28 - T17S - R34E
Lea County, New Mexico

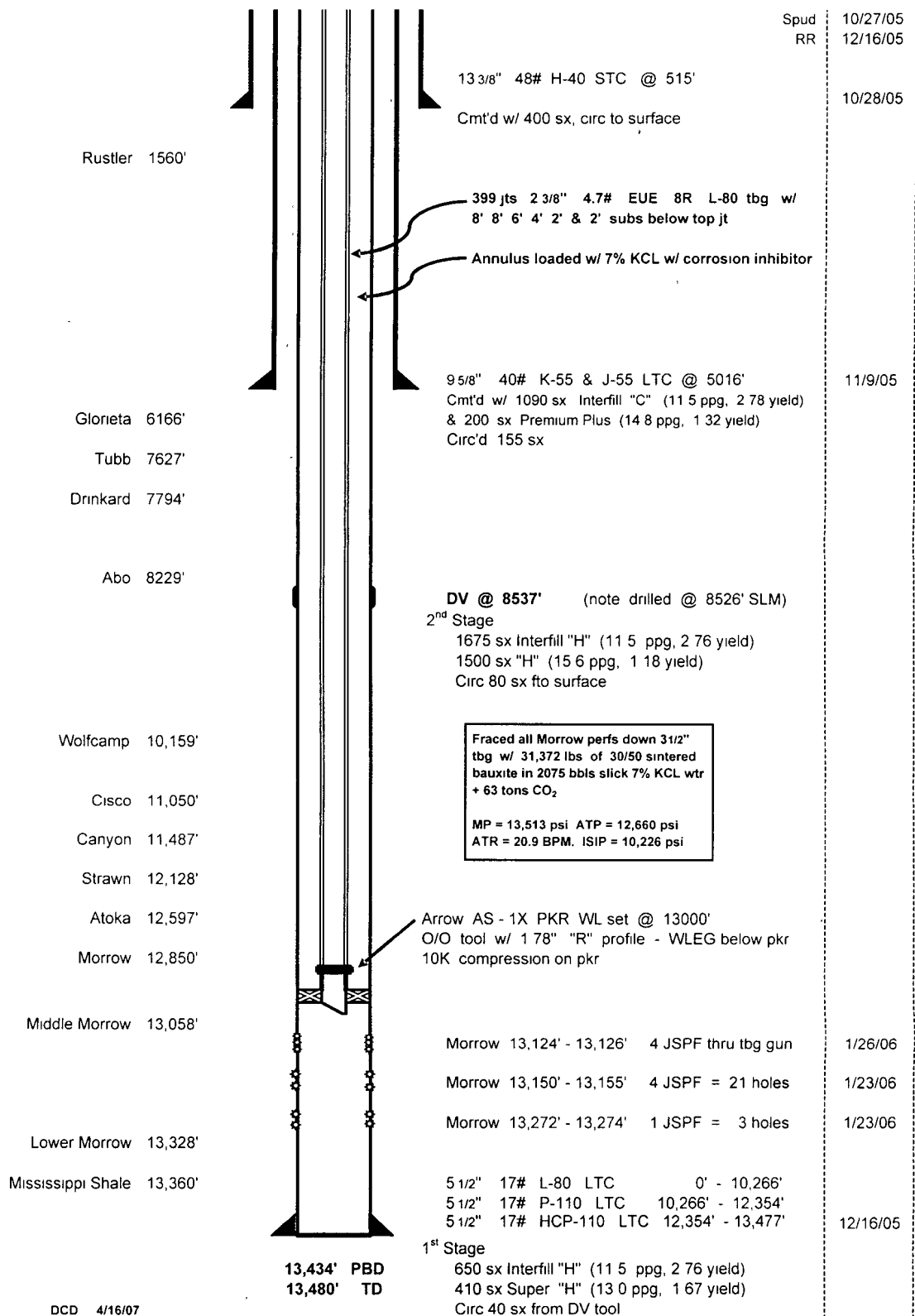
Drilled by OXY Permian
Completed & Operated by BP America

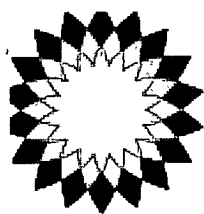
Current Status

GL = 4064'

RKB = 17.5'

Event Date





bp

Abandon Morrow, Eliminate Communication

Well Information (API No. 30-025-37382)

Lease & Well No.	Field	Paykey No.	AFE No.
Sunflower 28 State #2	Vacuum (Morrow)		
Drilled	TD	PBD	Datum
2006	13,480'	13,434'	GR EL = 4064'
Legal	S – T – R	County	State
690' FSL & 1160' FWL	SEC 28, T17S, R34E	Lea	New Mexico
Prepared By	Date	Approved By	Date
W. C. Heard	January 30, 2008		

Wellbore Data

Casing	Size	Weight	Grade	Depth	Cmt	TOC
Surface	13 3/8"	48#	H-40	515'	400 sx	Surf - circ
Intermediate	95/8"	40#	J-55	5016'	1290 sx	Surf - circ
Production	5 1/2"	17#	L-80/P-110/ HCP-110	13,477' DVT @ 8537'	1 st : 1060 sx 2 nd : 3175 sx	DVT – circ Surf - circ
Production Remedial Cementing	NA					

Tubing: 2 3/8" 4.7# L-80 EUE 8R

Perfs: Orig Jan 2006 13,124-126' (3 holes), 13,150-155' (21 holes), 13,272-74' (3 holes) Morrow

History: Drilled in 2005 by Oxy Permian and completed in 2006 by BP America Production Company as a Morrow gas well. In October, 2007, "jetted" fluid to 12,572' using coiled-tubing unit. BP received NOV for this well for "failing MIT" – apparently pressure builds up in tubing-casing annulus and returns after being bled off.

Scope of Work: Abandon Morrow and eliminate communication (source of pressure build up in tubing-casing annulus). Per JOA, recompletion to Canyon must be on separate AFE – tickets/invoicing need to be kept separate.

PROCEDURE

1. Check location for anchors and assure that testing has been conducted within an acceptable timeframe. Notify New Mexico Oil Conservaiton Division, Hobbs District (505 / 393-6161) of upcoming abandonment/eliminate communication operations - 24 hours prior to commencement. NOTE: BP received NOV from NM for "failing MIT"; inform NMOCD that workover will be addressing situation.
2. MIRU PU. Check casing / wellhead for pressures - bleed off into containment. RU slickline unit. Set blanking plug in 1.78" R nipple of on-off tool. Load tubing and test to 500 psi. RD SLU.

Hazard	Effect	Mitigation
Pulling Unit Equipment Failure Objects falling from derrick	Possible injury or death to personnel, damage to equipment or wellbore	<ul style="list-style-type: none"> ➤ Inspection of derrick ➤ Pre job inspection of rig after RU
Loss of well control	Possible injury or death to personnel, damage to equipment, damage to environment	<ul style="list-style-type: none"> ➤ Ensure well is dead before wellhead removal ➤ Dispensation in place for less than two mechanical barriers ➤ Assure that BOP has been shop tested and documentation delivered with equipment
H ₂ S	Possible injury or death to personnel	<ul style="list-style-type: none"> ➤ Monitor H₂S levels continuously ➤ Pre job inspection of H₂S equipment and breathing equipment ➤ Available phone contacts in case gas escapes into environment ➤ All employees H₂S trained.
Lifting – Suspended Load	Possible injury or death to personnel, damage to equipment	<ul style="list-style-type: none"> ➤ Review JSA, check slings, use proper PPE

3. Monitor well and assure it's stable. ND tree, NU BOP (with variable bore rams, if possible). Test BOP to 500 psi.
4. RU slickline unit. Equalize blanking plug and retrieve same. RD SLU.
5. Release packer and TOH.

Hazard	Effect	Mitigation
Dropped pipe in hole	Possible damage to well or equipment	<ul style="list-style-type: none"> ➤ Pipe handling practices – slips, clamps, tongs, complete MU/BO before lifting as appropriate
Drop pipe in derrick	Possible injury or death to personnel, damage to equipment	<ul style="list-style-type: none"> ➤ Line of fire practices ➤ Inspection of lifting equipment
Loss of well control	Possible injury to personnel, damage to wellbore, damage to environment	<ul style="list-style-type: none"> ➤ Have TIW valve on floor – full opening & capable of stabbing into 2 3/8" tbg ➤ Frequent BOP drills
Falling from height	Possible injury or death to personnel	<ul style="list-style-type: none"> ➤ Use work platform ➤ 100% tie-off

6. RU wireline unit. Set CIBP at 13,050'. Dump 20' cement on top. Load casing and test to 1000 psi (BP has received NOV from NM for "failing MIT"); check wellhead equipment for communication: from production casing to intermediate casing and from intermediate casing to surface casing. Repair casing/wellhead as necessary. Notify State of NM for MIT.
7. Separate recompletion procedure to follow.
8. Ensure costs are accurately recorded and that work description is transmitted via DIMS (morning report) or faxed to the Midland office, Eunice production office, and the Houston office (DIMS satisfies transmittal to Houston).

Sunflower "28" State #2

Vacuum; Morrow (Gas)

API No. 30 - 025 - 37382

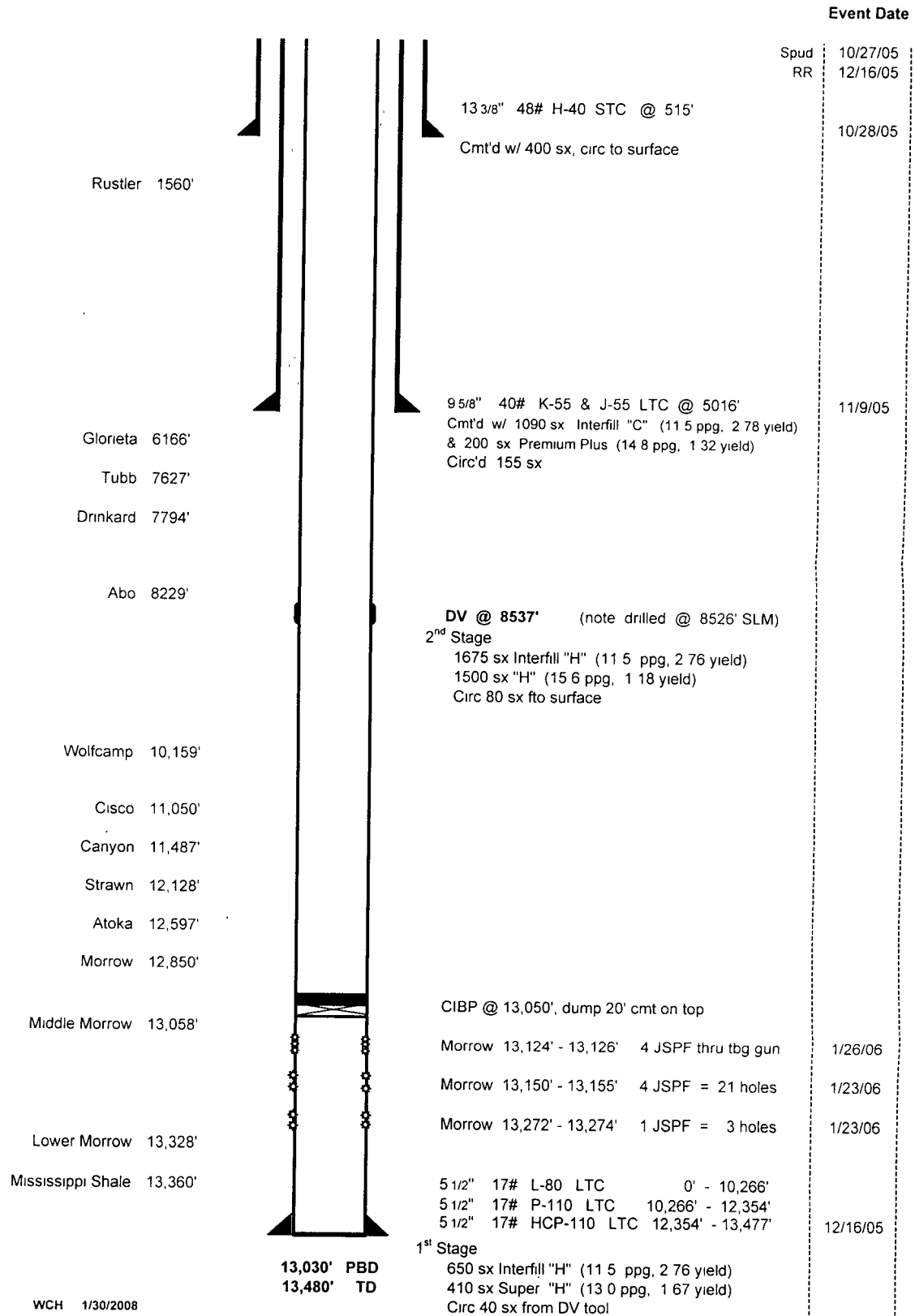
690' FSL & 1160' FWL
Section 28 - T17S - R34E
Lea County, New Mexico

Drilled by OXY Permian
Completed & Operated by BP America

Abandon Morrow

GL = 4064'

RKB = 17.5'





Recomplete to Canyon
Revised 2/18/2008

Well Information (API No. 30-025-37382)

Lease & Well No.	Field	Paykey No.	AFE No.
Sunflower 28 State #2	Vacuum (Morrow)		
Drilled	TD	PBD	Datum
2006	13,480'	13,434'	GR EL = 4064'
Legal	S – T – R	County	State
690' FSL & 1160' FWL	SEC 28, T17S, R34E	Lea	New Mexico
Prepared By	Date	Approved By	Date
W. C. Heard	February 18, 2008		

Wellbore Data

Casing	Size	Weight	Grade	Depth	Cmt	TOC
Surface	13 3/8"	48#	H-40	515'	400 sx	Surf - circ
Intermediate	95/8"	40#	J-55	5016'	1290 sx	Surf - circ
Production	5 1/2"	17#	L-80/P-110/ HCP-110	13,477' DVT @ 8537'	1 st : 1060 sx 2 nd : 3175 sx	DVT – circ Surf - circ
Production Remedial Cementing	NA					

Tubing: 2 3/8" 4.7# L-80 EUE 8R

Perfs: Orig Jan 2006 13,124-126' (3 holes), 13,150-155' (21 holes), 13,272-74' (3 holes) Morrow

History: Drilled in 2005 by Oxy Permian and completed in 2006 by BP America Production Company as a Morrow gas well. In October, 2007, "jetted" fluid to 12,572' using coiled-tubing unit. BP received NOV for this well for "failing MIT" – apparently pressure builds up in tubing-casing annulus and returns after being bled off. Morrow abandoned and source of pressure identified/eliminated (this work prior to recompletion).

Scope of Work: Recomplete to Canyon; Per JOA, Morrow to be abandoned and source of pressure eliminated on separate AFE – tickets/invoicing need to be kept separate.

PROCEDURE

1. Notify New Mexico Oil Conservaiton Division, Hobbs District (505 / 393-6161) of upcoming recompletion operations - 24 hours prior to commencement.
2. Perforate Canyon 11,564-570' and 11,579-582' with 2 JSPF, 120-degree phasing using 4" casing gun. Correlate to Apollo GR-CBL-CCL dated 1/20/2006. RD WL.

Hazard	Effect	Mitigation
Dropped objects from derrick	Possible injury or death to personnel, damage to well or equipment	<ul style="list-style-type: none"> ➤ Inspection of equipment ➤ Secondary retention
Wireline operations, perforating	Possible injury or death to personnel, damage to equipment	<ul style="list-style-type: none"> ➤ Line-of-Fire practices ➤ Inspection of lifting equipment ➤ Proper arming and handling practices ➤ Overhead lift practices
Loss of well control	Possible injury to personnel, damage to wellbore, damage to environment	<ul style="list-style-type: none"> ➤ Install pressure control for perforating ➤ BOP drill

3. TIH with packer on 2 7/8" work string. Spot acid across perms. PU and set packer at 11,400' +/- . Load annulus and test to 500 psi. Acidize Canyon with 1000 gallons 15% NEFE HCL. Pump at 4-6 BPM, max press 5000 psi.

Hazard	Effect	Mitigation
Dropped pipe in hole	Possible damage to well or equipment	<ul style="list-style-type: none"> ➤ Pipe handling practices – slips, clamps, tongs, complete MU/BO before lifting as appropriate
Drop pipe in derrick	Possible injury or death to personnel, damage to equipment	<ul style="list-style-type: none"> ➤ Line of fire practices ➤ Inspection of lifting equipment
Loss of well control	Possible injury to personnel, damage to wellbore, damage to environment	<ul style="list-style-type: none"> ➤ Have TIW valve on floor – full opening & capable of stabbing into 2 3/8" tbg ➤ Frequent BOP drills
Falling from height	Possible injury or death to personnel	<ul style="list-style-type: none"> ➤ Use work platform ➤ 100% tie-off

4. Flow / swab back load and evaluate for frac. Frac per Engineering recommendation if testing indicates.
5. Release packer and TOH LD WS.
6. TIH with 2 3/8" completion assembly per Production recommendation. ND BOP, NU THF.
7. Run pump and rods per Production recommendation. Hang well on.
8. RD PU.
9. Ensure costs are accurately recorded and that work description is transmitted via DIMS (morning report) or faxed to the Midland office, Eunice production office, and the Houston office (DIMS satisfies transmittal to Houston).

10. Complete well handover form with a Production representative – include documentation from Morrow abandonment and any casing/wellhead repair (eliminate pressure communication) operations. Provide a copy for Production, fax to Midland office and send in original for well file. Assure that information for the required regulatory filings has been forwarded to responsible person. TOPS.

690' FSL & 1160' FWL
Section 28 - T17S - R34E
Lea County, New Mexico

Drilled by OXY Permian
Completed & Operated by BP America

Recomplete Canyon

GL = 4064'

RKB = 17.5'

Event Date

