

## DISTRICT I

P.O. Box 1980, Hobbs, NM 88240

## DISTRICT II

P.O. Drawer DD, Artesia, NM 888210

## DISTRICT III

1000 Rio Brazos Rd., Aztec, NM 87410

## DISTRICT IV

2040 South Pacheco, Santa Fe, NM 87505

## STATE OF NEW MEXICO

Energy, Minerals and Natural Resources Department

## OIL CONSERVATION DIVISION

2040 Pacheco St.  
Santa Fe, NM 87505

Form C-101

Revised October 18, 1994

Instructions on back

Submit to Appropriate District Office

State Lease - 6 Copies

Fee Lease - 5 Copies

AMENDED REPORT

## APPLICATION FOR PERMIT TO DRILL, RE-ENTER, DEEPEN, PLUGBACK, OR ADD A ZONE

1 Operator Name and Address PALADIN ENERGY CORP. 10290 Monroe Drive, Suite 301 Dallas, Texas 75229		2 OGRID Number 164070 ✓
4 Property Code 21142 ✓	5 Property Name J.L. Reed	3 API Number 30-025-38809
		6 Well No. 7 ✓

## 7 Surface Location

UL or lot No.	Section	Township	Range	Lot. Ind	Feet from the	North/South Line	Feet from the	East/West Line	County
A	35	13-S	37-E		910	North	660	East	Lea

## 8 Proposed Bottom Hole Location If Different From Surface

UL or lot No	Section	Township	Range	Lot. Ind	Feet from the	North/South Line	Feet from the	East/West Line	County
9 Proposed Pool 1					10 Proposed Pool 2				

## King Devonian

11 Work Type Code N	12 Well Type Code O	13 Cable/Rotary Rotary	14 Lease Type Code P ✓	15 Ground Level Elevation 3,850'
16 Multiple No	17 Proposed depth 12,600'	18 Formation Devonian	19 Contractor	20 Spud Date

## 21 Proposed Casing and Cement Program

Hole Size	Casing Size	Casing weight/foot	Setting Depth	Sacks Cement	Estimated TOC
17-1/2	13-3/8	48#	400'	400	Sur
12-1/4	8-5/8	32#	4,600'	1200	Sur
7-7/8	5-1/2	17 & 20#	12,600'	1300 2 stages	8,800' & 4,400'

22 Describe the proposed program. If this application is to DEEPEN or PLUG BACK give the data on the present productive zone and proposed new productive zone. Describe the blowout prevention program, if any. Use additional sheets if necessary.

Drill 17-1/2" hole to 400' and set 13-3/8" conductor, cement to surface. Drill out with 12-1/4" bit to 4,600' and set 8-5/8" casing and cement to surface. Drill 7-7/8" hole to 12,600' (+,-), set 5-1/2" casing and cement with two stages to bring tops to approximately 8,800' and from 6,500' to 4,400'.

Perforate Devonian formation, perform acid treatment job w/ approximately 5,000 gallons acid & additives.  
Test well on submersible pump. Install surface facilities and flowlines.

BOP - 11" Hydraulic Dual Ram (10M), Blind &amp; Pipe

47 I hereby certify that the rules of the Oil Conservation Division have been complied with and that the information given above is true and complete to the best of my knowledge and belief

Signature: *David Plaisance* (S)

Printed name: David Plaisance

Title: VP Exploration &amp; Production

Date: 03/04/08 Phone: 214-654-0132

## OIL CONSERVATION DIVISION

Approved by: *Chris Williams*

Title: OC DISTRICT SUPERVISOR/GENERAL MANAGER

Approval Date: MAR 13 2008 Expiration Date:

Conditions of Approval:

Attached ☐

Permit Expires 2 Years From Approval  
Date Unless Drilling Underway

DISTRICT I  
1625 N. FRENCH DR., HOBBES, NM 88240

State of New Mexico  
Energy, Minerals and Natural Resources Department

Form C-102

DISTRICT II  
1301 W. GRAND AVENUE, ARTESIA, NM 88210

OIL CONSERVATION DIVISION  
1220 SOUTH ST. FRANCIS DR.  
Santa Fe, New Mexico 87505

Revised October 12, 2005  
Submit to Appropriate District Office  
State Lease - 4 Copies  
Fee Lease - 3 Copies

DISTRICT III  
1000 Rio Brazos Rd., Aztec, NM 87410

DISTRICT IV  
1220 S. ST. FRANCIS DR., SANTA FE, NM 87505

WELL LOCATION AND ACREAGE DEDICATION PLAT

☐ AMENDED REPORT

API Number <b>30-025-38809</b>	Pool Code <b>359UD</b>	Pool Name <b>King Devonian</b>
Property Code <b>21142</b>	Property Name <b>J.L. REED</b>	Well Number <b>7</b>
OGRID No. <b>144070</b>	Operator Name <b>PALADIN ENERGY CORPORATION</b>	Elevation <b>3850'</b>

Surface Location

UL or lot No.	Section	Township	Range	Lot Idn	Feet from the	North/South line	Feet from the	East/West line	County
A	35	13-S	37-E		910	NORTH	660	EAST	LEA

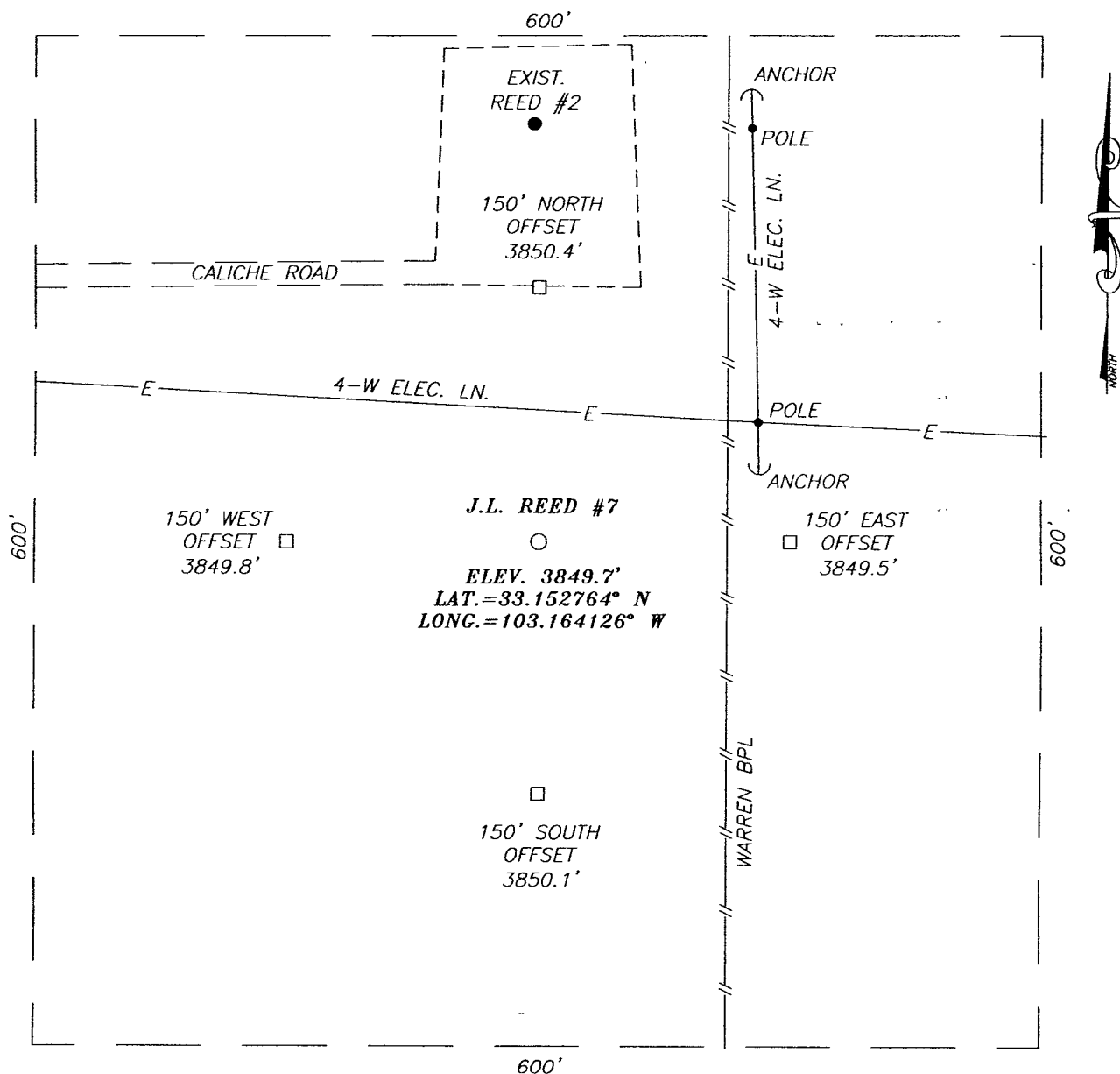
Bottom Hole Location If Different From Surface

UL or lot No.	Section	Township	Range	Lot Idn	Feet from the	North/South line	Feet from the	East/West line	County
Dedicated Acres <b>40</b>	Joint or Infill	Consolidation Code	Order No.						

NO ALLOWABLE WILL BE ASSIGNED TO THIS COMPLETION UNTIL ALL INTERESTS HAVE BEEN CONSOLIDATED  
OR A NON-STANDARD UNIT HAS BEEN APPROVED BY THE DIVISION

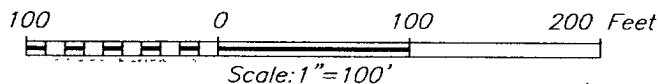
<p>GEODETIC COORDINATES NAD 27 NME  Y=785088.2 N X=857850.3 E  LAT.=33.152764° N LONG.=103.164126° W</p>	<p>910'</p> <p>660'</p>	<p><b>OPERATOR CERTIFICATION</b></p> <p>I hereby certify that the information herein is true and complete to the best of my knowledge and belief, and that this organization either owns a working interest or unleased mineral interest in the land including the proposed bottom hole location or has a right to drill this well at this location pursuant to a contract with an owner of such mineral or working interest, or to a voluntary pooling agreement or a compulsory pooling order heretofore entered by the division.</p> <p><i>David Plaisance</i> 3/4/08 Signature Date <b>DAVID PLAISANCE</b> Printed Name</p> <p><b>SURVEYOR CERTIFICATION</b></p> <p>I hereby certify that the well location shown on this plat was plotted from field notes of actual surveys made by me or under my supervision, and that the same is true and correct to the best of my belief.</p> <p>FEBRUARY 25 2008 NEW MEXICO Date Surveyed Signature &amp; Seal of Professional Surveyor 3239 GARY EIDSON RONALD EIDSON Certificate No. 12641 3239</p>
--	-------------------------	--

**SECTION 35, TOWNSHIP 13 SOUTH, RANGE 37 EAST, N.M.P.M.,**  
 LEA COUNTY, NEW MEXICO



**DIRECTIONS TO LOCATION**

FROM THE INTERSECTION OF MCDONALD ROAD AND DORAN ROAD, GO EAST ON MCDONALD ROAD APPROX. 0.8 MILES. TURN LEFT AND GO NORTH APPROX. 0.9 MILES. TURN RIGHT AND GO EAST APPROX. 0.1 MILE TO THE EXISTING REED #2 WELL PAD. THIS LOCATION IS APPROX. 250 FEET SOUTH.



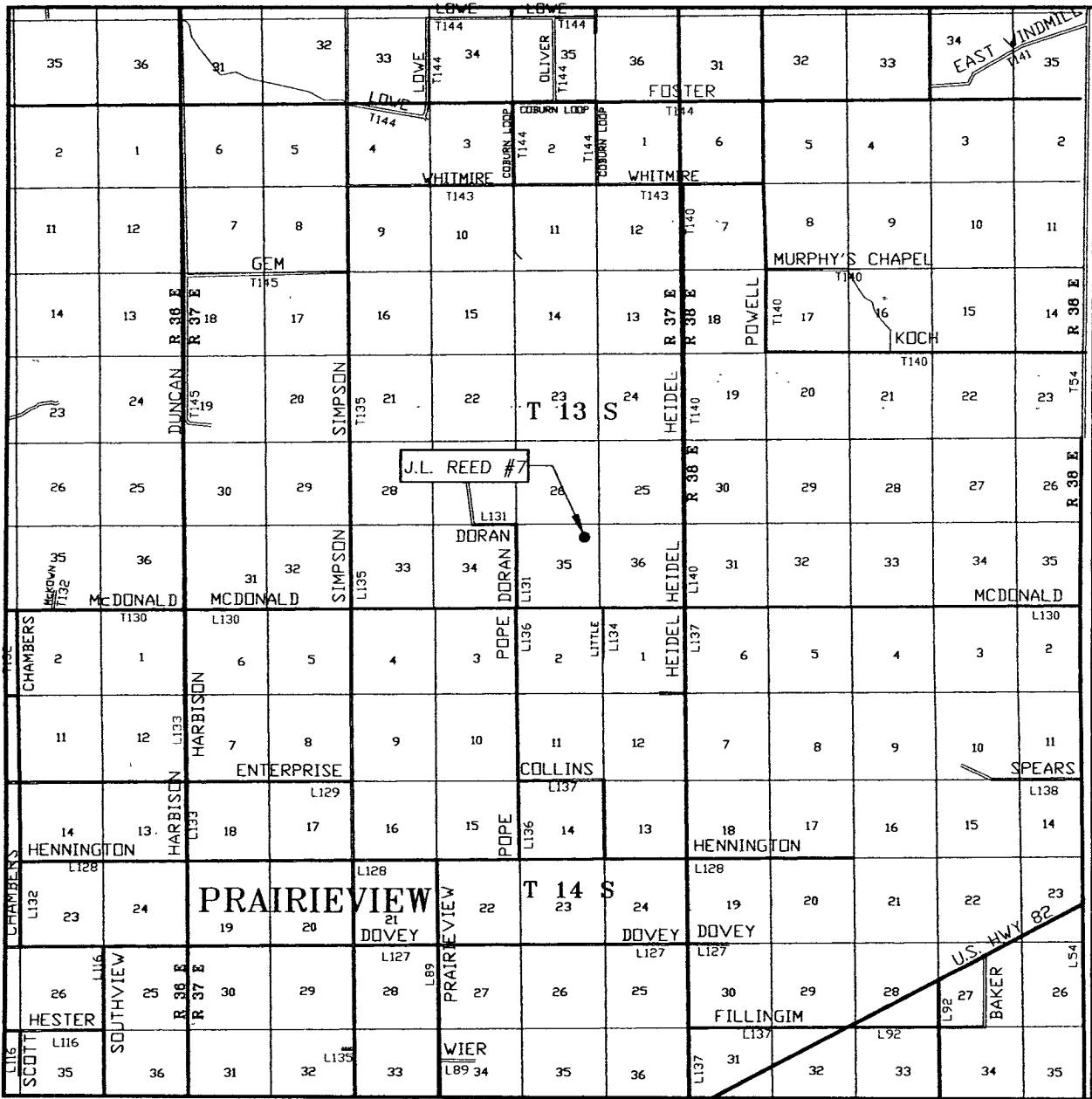
**PALADIN ENERGY CORPORATION**

J.L. REED #7 WELL  
 LOCATED 910 FEET FROM THE NORTH LINE  
 AND 660 FEET FROM THE EAST LINE OF SECTION 35,  
 TOWNSHIP 13 SOUTH, RANGE 37 EAST, N.M.P.M.,  
 LEA COUNTY, NEW MEXICO.

Survey Date: 2/25/08	Sheet 1 of 1 Sheets
W.O. Number: 08.11.0231	Dr By: LA Rev 1:N/A
Date: 2/29/08	08110321 Scale: 1"=100'

PROVIDING SURVEYING SERVICES  
 SINCE 1946  
**JOHN WEST SURVEYING COMPANY**  
 412 N. DAL PASO  
 HOBBS, N.M. 88240  
 (505) 393-3117

# VICINITY MAP



SCALE: 1" = 2 MILES

SEC. 35 TWP. 18-S RGE. 37-E

SURVEY N.M.P.M.

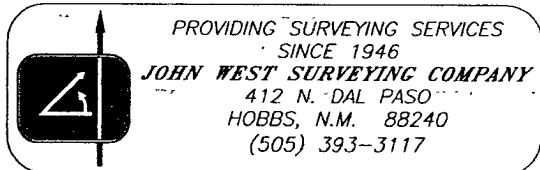
COUNTY LEA STATE NEW MEXICO

DESCRIPTION 910' FNL & 660' FEL

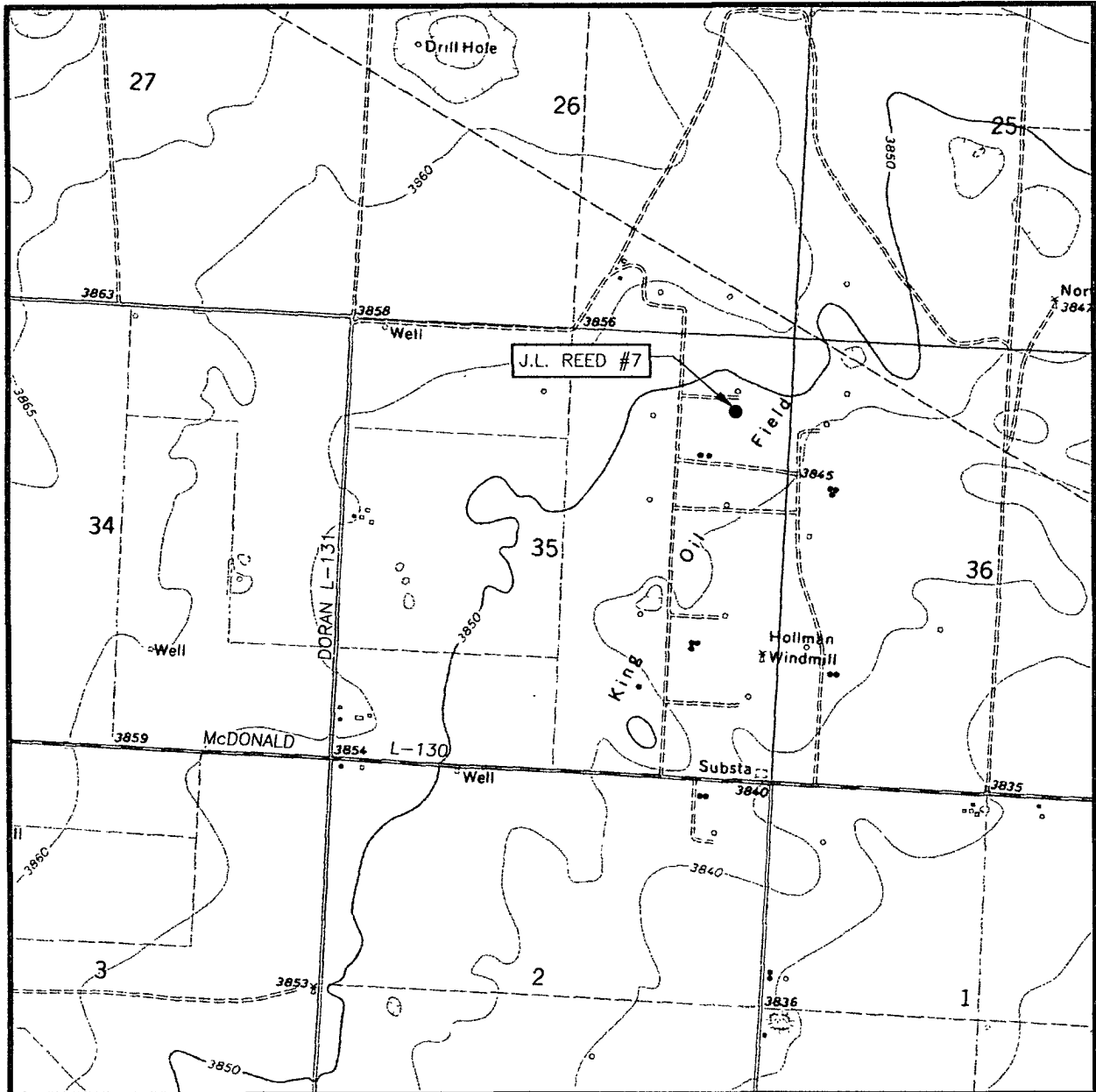
ELEVATION 3850'

OPERATOR PALADIN ENERGY CORPORATION

LEASE J.L. REED



# LOCATION VERIFICATION MAP



SCALE: 1" = 2000'

CONTOUR INTERVAL:  
PRAIRIEVIEW, N.M. - 5'

SEC. 35 TWP. 13-S RGE. 37-E

SURVEY N.M.P.M.

COUNTY LEA STATE NEW MEXICO

DESCRIPTION 910' FNL & 660' FEL

ELEVATION 3850'

OPERATOR PALADIN ENERGY CORPORATION

LEASE J.L. REED

U.S.G.S. TOPOGRAPHIC MAP  
PRAIRIEVIEW, N.M.

