

District I
1625 N. French Dr., Hobbs, NM 88240
District II
1301 W. Grand Avenue, Artesia, NM 88210
District III
1000 Rio Brazos Rd., Aztec, NM 87410
District IV
1220 S. St. Francis Dr., Santa Fe, NM 87505

State of New Mexico
Energy, Minerals & Natural Resources

Form C-104
Revised Feb. 26, 2007

Oil Conservation Division
1220 South St. Francis Dr.
Santa Fe, NM 87505

Submit to Appropriate District Office
5 Copies

☐ AMENDED REPORT

I. REQUEST FOR ALLOWABLE AND AUTHORIZATION TO TRANSPORT

1 Operator name and Address Edge Petroleum Operating Company, Inc. 1301 Travis Suite 2000 Houston, TX 77002		2 OGRID Number 224400
3 Reason for Filing Code/ Effective Date RT 3/2008 3800 b 190,000 mcf		
4 API Number 30 - 025-34590	5 Pool Name Osudo Morrow West (Gas)	6 Pool Code 82240
7 Property Code 36729	8 Property Name Prarie Fire State	9 Well Number 1

II. 10 Surface Location

Ul or lot no.	Section	Township	Range	Lot Idn	Feet from the	North/South Line	Feet from the	East/West line	County
7	2	21S	34E		1980	North	1650	East	Lea

11 Bottom Hole Location

UL or lot no.	Section	Township	Range	Lot Idn	Feet from the	North/South line	Feet from the	East/West line	County
12 Lsc Code S	13 Producing Method Code Flowing	14 Gas Connection Date 3-2008	15 C-129 Permit Number	16 C-129 Effective Date	17 C-129 Expiration Date				

III. Oil and Gas Transporters

18 Transporter OGRID	19 Transporter Name and Address	20 O/G/W
034353	Plains Marketing 10 Desta Drive Ste 200 East Midland, TX 79705	O
036785	DCP Midstream 10 Desta Drive Ste 400 West Midland, TX 79705	G

IV. Well Completion Data

21 Spud Date 11-26-07	22 Ready Date 3-2008	23 TD 13,920'	24 PBTB 13,720'	25 Perforations 13,420'-13,625'	26 DHC, MC
27 Hole Size	28 Casing & Tubing Size	29 Depth Set	30 Sacks Cement		
8 3/4	7	12,000	850		
6 1/8	4 1/2	14,100	500		

V. Well Test Data

31 Date New Oil 3-5-08	32 Gas Delivery Date 3-5-08	33 Test Date 3-2008	34 Test Length 30 days	35 Tbg. Pressure	36 Csg. Pressure
37 Choke Size 36/64	38 Oil 3800	39 Water 0	40 Gas 190,000	41 Test Method Flowing	
42 I hereby certify that the rules of the Oil Conservation Division have been complied with and that the information given above is true and complete to the best of my knowledge and belief. Signature: <i>Angela Lightner</i>			OIL CONSERVATION DIVISION		
Printed name: Angela Lightner			Approved by: <i>Chris Williams</i>		
Title: Consultant			Title: OC DISTRICT SUPERVISOR/GENERAL MANAGER		
E-mail Address: angela@rkford.com			Approval Date: MAR 14 2008		
Date: 3-13-08		Phone: 432-682-0440			

DISTRICT I
1625 N. FRENCH DR., BOBBS, NM 88240

DISTRICT II
1301 W GRAND AVENUE, ARTESIA, NM 88210

DISTRICT III
1000 Rio Brazos Rd., Aztec, NM 87410

DISTRICT IV
1220 S. ST. FRANCIS DR., SANTA FE, NM 87505

State of New Mexico
Energy, Minerals and Natural Resources Department

OIL CONSERVATION DIVISION
1220 SOUTH ST. FRANCIS DR.
Santa Fe, New Mexico 87505

Form C-102
Revised October 12, 2005
Submit to Appropriate District Office
State Lease - 4 Copies
Fee Lease - 3 Copies

WELL LOCATION AND ACREAGE DEDICATION PLAT

☐ AMENDED REPORT

API Number 30-025-34590	Pool Code 88240	Pool Name Osuda West Morrow
Property Code 36729	Property Name PRAIRIE FIRE STATE	Well Number 1
OGRID No. 224400	Operator Name EDGE PETROLEUM OPERATING CO.	Elevation 3714'

Surface Location

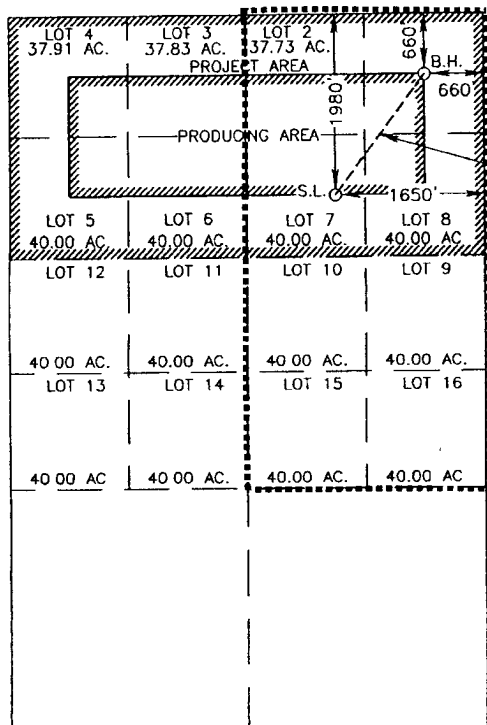
UL or lot No.	Section	Township	Range	Lot Idn	Feet from the	North/South line	Feet from the	East/West line	County
7	2	21-S	34-E		1980	NORTH	1650	EAST	LEA

Bottom Hole Location If Different From Surface

UL or lot No.	Section	Township	Range	Lot Idn	Feet from the	North/South line	Feet from the	East/West line	County
1	2	21-S	34-E		660	NORTH	660	EAST	LEA

Dedicated Acres	Joint or Infill	Consolidation Code	Order No.
320			

NO ALLOWABLE WILL BE ASSIGNED TO THIS COMPLETION UNTIL ALL INTERESTS HAVE BEEN CONSOLIDATED
OR A NON-STANDARD UNIT HAS BEEN APPROVED BY THE DIVISION



GEODETIC COORDINATES
NAD 27 NME
SURFACE LOCATION
Y=552882.2 N
X=776310.9 E

LAT.=32.516789° N
LONG.=103.436944° W

BOTTOM HOLE LOCATION
Y=554210.9 N
X=777288.9 E

SCALE- 1"=2000

OPERATOR CERTIFICATION

I hereby certify that the information herein is true and complete to the best of my knowledge and belief, and that this organization either owns a working interest or unleased mineral interest in the land including the proposed bottom hole location or has a right to drill this well at this location pursuant to a contract with an owner of such mineral or working interest, or to a voluntary pooling agreement or a compulsory pooling order heretofore entered by the division.

Signature: *Angela Lightner* Date: 7-31-07
Printed Name: Angela Lightner

SURVEYOR CERTIFICATION

I hereby certify that the well location shown on this plat was plotted from field notes of actual surveys made by me or under my supervision, and that the same is true and correct to the best of my belief.

Date: 7/24/07
Signature: *Ronald J. Eidson*
Professional Surveyor Seal of Ronald J. Eidson, No. 3209
Professional Surveyor

Certificate No. GARY EIDSON 12641
RONALD J. EIDSON 3239