

State of New Mexico

Energy, Minerals and Natural Resources Department

Form C-102

Revised October 12, 2005

Submit to Appropriate District Office

State Lease - 4 Copies

Fee Lease - 3 Copies

DISTRICT I

1625 N. FRANCE DR., BOBBS, NM 88240

DISTRICT II

1301 W. GRAND AVENUE, ARTESIA, NM 88210

DISTRICT III

1000 Rio Brazos Rd., Aztec, NM 87410

DISTRICT IV

1220 S. ST. FRANCIS DR., SANTA FE, NM 87505

OIL CONSERVATION DIVISION

1220 SOUTH ST. FRANCIS DR.

Santa Fe, New Mexico 87505

WELL LOCATION AND ACREAGE DEDICATION PLAT

☐ AMENDED REPORT

API Number 30-025-34590	Pool Code 88240	Pool Name Osudo West Morrow
Property Code 36729	Property Name PRAIRIE FIRE STATE	
OGRID No. 224400	Operator Name EDGE PETROLEUM OPERATING CO.	Well Number 1
		Elevation 3714'

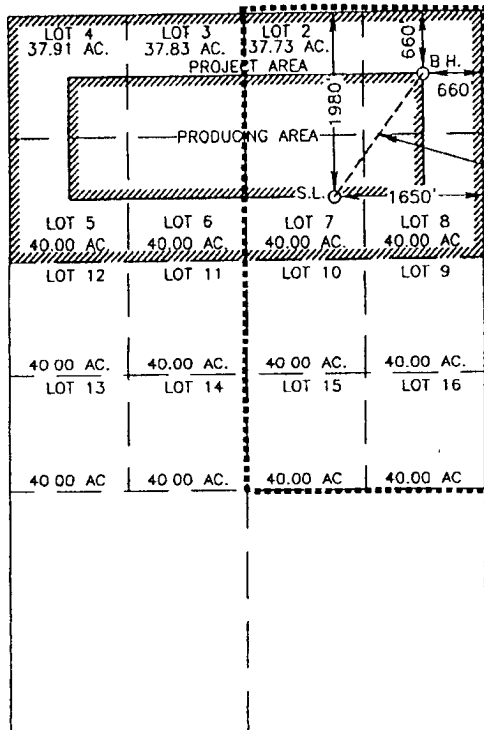
Surface Location

UL or lot No.	Section	Township	Range	Lot Idn	Feet from the	North/South line	Feet from the	East/West line	County
7	2	21-S	34-E		1980	NORTH	1650	EAST	LEA

Bottom Hole Location If Different From Surface

UL or lot No.	Section	Township	Range	Lot Idn	Feet from the	North/South line	Feet from the	East/West line	County
A 1	2	21-S	34-E		685	NORTH	660	EAST	LEA
Dedicated Acres 320	Joint or Infill	Consolidation Code	Order No.	685					

NO ALLOWABLE WILL BE ASSIGNED TO THIS COMPLETION UNTIL ALL INTERESTS HAVE BEEN CONSOLIDATED
OR A NON-STANDARD UNIT HAS BEEN APPROVED BY THE DIVISION



SCALE- 1"=2000

GEODETIC COORDINATES
NAD 27 NME
SURFACE LOCATION
Y=552882.2 N
X=776310.9 E

LAT.=32.516789° N
LONG.=103.436944° W

BOTTOM HOLE LOCATION
Y=554210.9 N
X=777288.9 E

OPERATOR CERTIFICATION

I hereby certify that the information herein is true and complete to the best of my knowledge and belief, and that this organization either owns a working interest or unleased mineral interest in the land including the proposed bottom hole location or has a right to drill this well at this location pursuant to a contract with an owner of such mineral or working interest, or to a voluntary pooling agreement or a compulsory pooling order heretofore entered by the division.

Angela Lightner 7-31-07
Signature Date
Angela Lightner
Printed Name

SURVEYOR CERTIFICATION

I hereby certify that the well location shown on this plat was plotted from field notes of actual surveys made by me or under my supervision, and that the same is true and correct to the best of my belief.

Ronald J. Eidson
Date Surveyed Signature Seal of Professional Surveyor
7/24/07

Certificate No. GARY EIDSON 12641
RONALD J. EIDSON 3239