

Submit to Appropriate District Office
State Lease - 6 copies
Fee Lease - 5 copies
District I

1625 N. French, Hobbs, NM 88240

District II

1301 W. Grand Avenue, Artesia, NM 88210

District III

1000 Rio Brazos Rd., Aztec, NM 87410

District IV

1220 S. St. Francis Dr., Santa Fe, NM 87505

State of New Mexico
Energy, Minerals and Natural Resources

OIL CONSERVATION DIVISION

1220 South St. Francis Dr.
Santa Fe, NM 87505

Form C-105

Revised March 25, 1999

WELL API NO.

30-025-38543

5. Indicate Type Of Lease

STATE ☒ FEE ☐

6. State Oil & Gas Lease No.

WELL COMPLETION OR RECOMPLETION REPORT AND LOG

1a. Type of Well:

OIL WELL ☒ GAS WELL ☐ DRY ☐ OTHER ☐

b. Type of Completion:

NEW WELL ☒ WORK OVER ☐ DEEPEN ☐ PLUG BACK ☐ DIFF. RESVR. ☐ OTHER ☐

2. Name of Operator

Energen Resources Corporation

3. Address of Operator

3300 N. "A" St., Bldg 4, Ste. 100, Midland, TX 79705

8. Well No.

3

9. Pool name or Wildcat

Burtner; Devonian, North

4. Well Location

Unit Letter C : 990 Feet From The North Line and 2200 Feet From The West Line

Section 3 Township 15S Range 33E NMPM Lea County

10. Date Spudded

10/15/07

11. Date T.D. Reached

2/29/08

12. Date Compl. (Ready to Prod)

3-28-08

13. Elevations (DF & RKB, RT, GR, etc.)

GR 4194'

14. Elev. Casinghead

15. Total Depth

13,595'

16. Plug Back T.D

17. If Multiple Compl. How Many Zones?

18. Intervals Drilled By

Rotary Tools

XX

Cable Tools

19. Producing Interval(s), of this completion - Top, Bottom, Name

13,557-13,595' OH Devonian

20. Was Directional Survey Made

No

21. Type Electric and Other Logs Run

CB/VD/CMT/GR/CCL

22. Was Well Cored

No

23. CASING RECORD (Report all strings set in well)

CASING SIZE	WEIGHT LB/FT.	DEPTH SET	HOLE SIZE	CEMENTING RECORD	AMOUNT PULLED
13-3/8"	48.00#	456'	17-1/2"	600sx	
9-5/8"	40.00 & 36.00#	5708'	12-1/4"	2600sx	
5-1/2"	17.00#	13,548'	8-7/8"	3400sx	

24. LINER RECORD

SIZE	TOP	BOTTOM	SACKS CEMENT	SCREEN	SIZE	DEPTH SET	PACKER SET
					2-7/8"	13,320'	13,312'

25. TUBING RECORD

26. Perforation record (interval, size, and number)

Perforated open hole from 13,562'-13,570' w/2" HSC gun loaded w/4-6.5gram Titan SDP 90-degree phased JSPF (8'/32 holes)

27. ACID, SHOT, FRACTURE, CEMENT, SQUEEZE, ETC

DEPTH INTERVAL	AMOUNT AND KIND MATERIAL USED
13,558-595'	4800 bbls 15% HCL/DI w/additives

28. PRODUCTION

Date First Production 1-24-08		Production Method (Flowing, gas lift, pumping - Size and type pump) Pumping					Well Status (Prod. or Shut-in) Prod.	
Date of Test 4-6-08	Hours Tested 24	Choke Size	Prod'n For Test Period	Oil - Bbl. 58	Gas - MCF 0	Water - Bbl. 10	Gas - Oil Ratio --	
Flow Tubing Press	Casing Pressure	Calculated 24- Hour Rate	Oil - Bbl.	Gas - MCF	Water - Bbl.	Oil Gravity - API -(Corr.) 51.2		

29. Disposition of Gas (Sold, used for fuel, vented, etc)

Vented

Test Witnessed By

30. List Attachments

Logs, C-102, C-104, deviation survey

31. I hereby certify that the information shown on both sides of this form is true and complete to the best of my knowledge and belief

Signature Carolyn Larson

Printed Name

Carolyn Larson

Title Regulatory Analyst Date 4-8-08

INSTRUCTIONS

This form is to be filed with the appropriate District Office of the Division not later than 20 days after the completion of any newly-drilled or deepened well. It shall be accompanied by one copy of all electrical and radio-activity logs run on the well and a summary of all special tests conducted, including drill stem tests. All depths reported shall be measured depths. In the case of directionally drilled wells, true vertical depths shall also be reported. For multiple completions, Items 25 through 29 shall be reported for each zone. The form is to be filed in quintuplicate except on state land, where six copies are required. See Rule 1105.

INDICATE FORMATION TOPS IN CONFORMANCE WITH GEOGRAPHICAL SECTION OF STATE

Southeastern New Mexico

T. Anhy	1533	T. Canyon	
T. Salt		T. Strawn	11,414
B. Salt	2504	T. Atoka	11,626
T. Yates	2646	T. Miss	12,818
T. 7 Rivers	2798	T. Devonian	13,551
T. Queen	3436	T. Silurian	
T. Grayburg	3948	T. Montoya	
T. San Andres	4214	T. Simpson	
T. Glorieta	5612	T. McKee	
T. Paddock		T. Ellenburger	
T. Blinbry		T. Gr. Wash	
T. Tubb	7059	T. Delaware Sand	
T. Drinkard		T. Bone Springs	
T. Abo	7700	T. Woodford	13,458
T. Wolfcamp	9200	T.	
T. Penn	9744	T.	
T. Cisco (Bough C)		T.	

Northeastern New Mexico

T. Ojo Alamo		T. Penn. "B"	
T. Kirtland-Fruitland		T. Penn. "C"	
T. Pictured Cliffs		T. Penn. "D"	
T. Cliff House		T. Leadville	
T. Menefee		T. Madison	
T. Point Lookout		T. Elbert	
T. Mancos		T. McCracken	
T. Gallup		T. Ignacio Otzte	
Base Greenhorn		T. Granite	
T. Dakota		T.	
T. Morrison		T.	
T. Todilto		T.	
T. Entrada		T.	
T. Wingate		T.	
T. Chinle		T.	
T. Permian		T.	
T. Penn "A"		T.	

OIL OR GAS SANDS OR ZONES

No. 1, from 13,551' to 13,565'
No. 2, from to

No. 3, from to
No. 4, from to

IMPORTANT WATER SANDS

Include data on rate of water inflow and elevation to which water rose in hole.

No. 1, from to feet
No. 2, from to feet
No. 3, from to feet

LITHOLOGY RECORD (Attach additional sheet if necessary)

From	To	Thickness in Feet	Lithology	From	To	Thickness in Feet	Lithology
Surface	1533	1533	Sand & shale				
1533	2646	1113'	Anhydrite and evaporites				
2646'	7800'	5154'	Dolomite, anhydrite shale				
7800	9400	1600	Dolomite, anhydrite, sand, shale				
9400	11,626'	2226'	Limestone, shale				
11,626'	12,818'	1192'	Sandstone, shale				
12,818'	13,458	645'	Limestone, shale				
13,458'	13,551'	93'	Shale				
13,551'	13,565'	14'	Limestone, dolomite				

DISTRICT I
1625 N. French Dr., Hobbs, NM 88240
DISTRICT II
1301 W. Grand Avenue, Artesia, NM 88210
DISTRICT III
1000 Rio Brazos Rd., Aztec, NM 87410
DISTRICT IV
1220 S. St. Francis Dr., Santa Fe, NM 87505

State of New Mexico
Energy, Minerals & Natural Resources Department
OIL CONSERVATION DIVISION
1220 South St. Frances Dr.
Santa Fe, NM 87505

Form C-102
Revised October 12, 2005
Submit to Appropriate District Office
State Lease - 4 Copies
Fee Lease - 3 Copies

☐ AMENDED REPORT

WELL LOCATION AND ACREAGE DEDICATION PLAT

API Number 30-025-38543	Pool Code 97455	Pool Name BURTNER; DEVONIAN, NORTH
Property Code 34275	Property Name SAUNDERS DEEP STATE	Well Number 3
OGRID No. 162928	Operator Name ENERGEN RESOURCES CORPORATION	Elevation 4194'

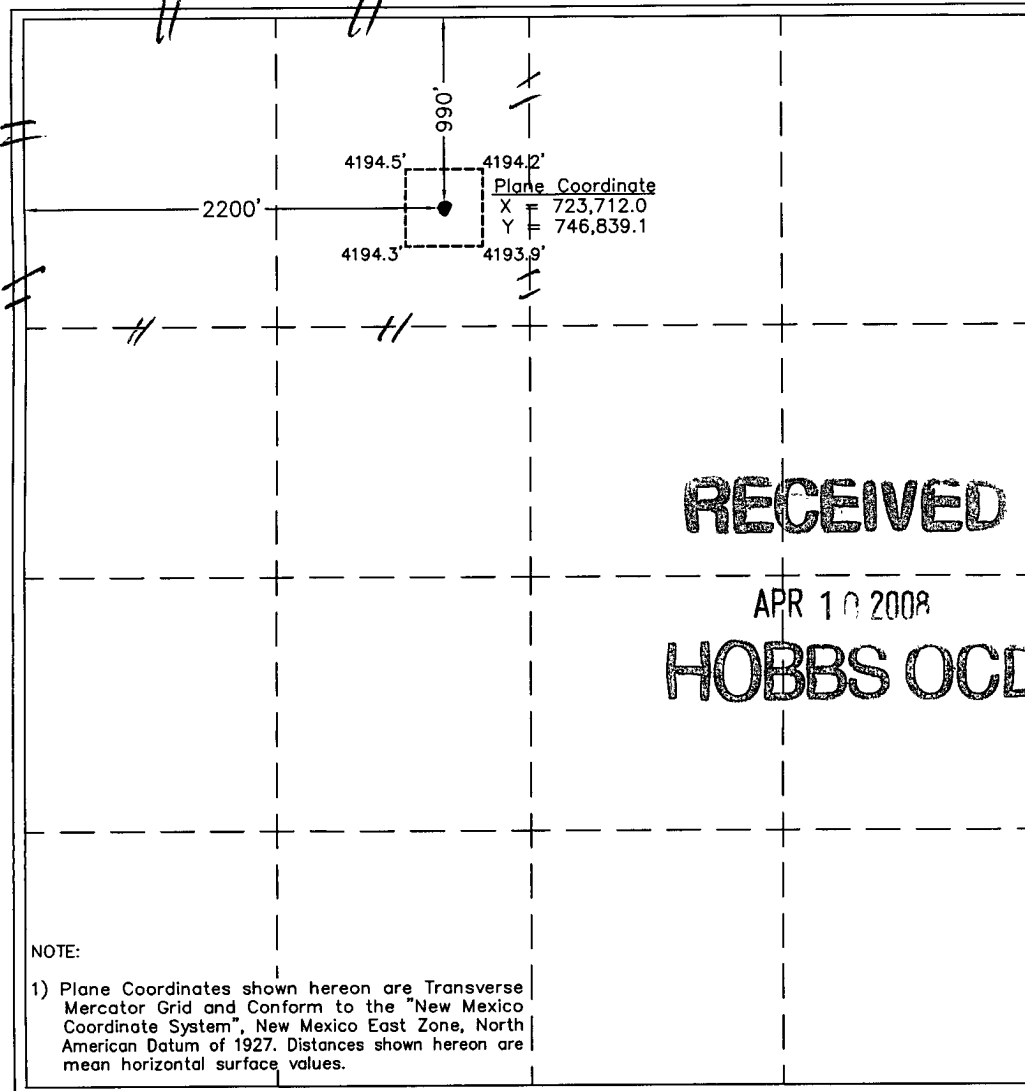
Surface Location

UL or lot No. C	Section 3	Township 15 S	Range 33 E	Lot Idn	Feet from the 990	North/South line NORTH	Feet from the 2200	East/West line WEST	County LEA
--------------------	--------------	------------------	---------------	---------	----------------------	---------------------------	-----------------------	------------------------	---------------

Bottom Hole Location If Different From Surface

UL or lot No.	Section	Township	Range	Lot Idn	Feet from the	North/South line	Feet from the	East/West line	County
Dedicated Acres 97.44	Joint or Infill	Consolidation Code	Order No.						

NO ALLOWABLE WILL BE ASSIGNED TO THIS COMPLETION UNTIL ALL INTERESTS HAVE BEEN CONSOLIDATED OR A NON-STANDARD UNIT HAS BEEN APPROVED BY THE DIVISION



OPERATOR CERTIFICATION

I hereby certify the information contained herein is true and complete to the best of my knowledge and belief, and that this organization either owns a working interest or unleased mineral interest in the land including the proposed bottom hole location or has a right to drill this well at this location pursuant to a contract with an owner of such a mineral or working interest, or to a voluntary pooling agreement or a compulsory pooling order heretofore entered by the division.

Carolyn Larson
Signature Date
Carolyn Larson 7/10/07
Printed Name

SURVEYOR CERTIFICATION

I hereby certify that the well location shown on this plat was plotted from field notes of actual surveys made by me or under my supervision and that the same is true and correct to the best of my belief

May 24, 2007

Date of Survey LVA
Signature & Seal of Professional Surveyor

MA
NEW MEXICO
12185
SURVEYOR

W.O. Num. 2007-0602

Certificate No. MACON McDONALD 12185