

DISTRICT I
1625 N. FRENCH DR., HOBBS, NM 88240

DISTRICT II
1301 W. GRAND AVENUE, ARTESIA, NM 88210

DISTRICT III
1000 Rio Brazos Rd., Aztec, NM 87410

DISTRICT IV
1220 S. ST. FRANCIS DR., SANTA FE, NM 87606

State of New Mexico
Energy, Minerals and Natural Resources Department

OIL CONSERVATION DIVISION
1220 SOUTH ST. FRANCIS DR.
Santa Fe, New Mexico 87505

Form C-102
Revised October 12, 2005
Submit to Appropriate District Office
State Lease - 4 Copies
Fee Lease - 3 Copies

WELL LOCATION AND ACREAGE DEDICATION PLAT

☐ AMENDED REPORT

API Number 30-025-38687	Pool Code 50350	Pool Name Penrose Skelly; Grayburg
Property Code 23118	Property Name TAYLOR GLENN	Well Number 20
OGRID No. 873	Operator Name APACHE CORPORATION	Elevation 3475'

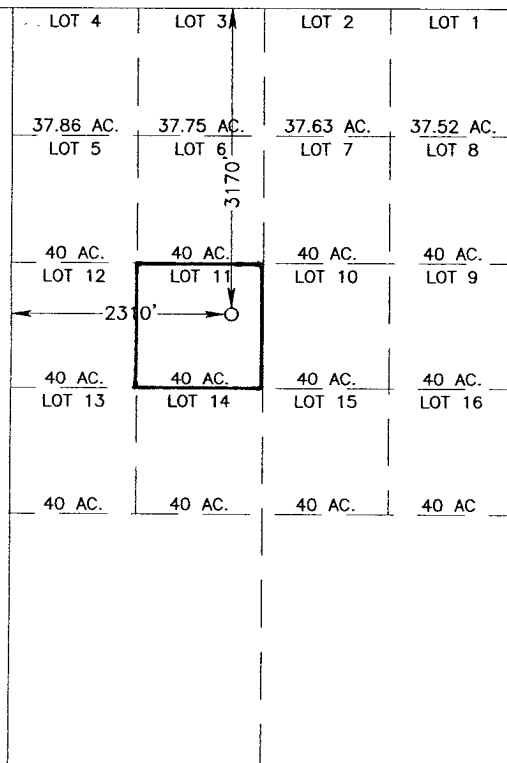
Surface Location

UL or lot No.	Section	Township	Range	Lot Idn	Feet from the	North/South line	Feet from the	East/West line	County
11	3	21-S	37-E		3170	NORTH	2310	WEST	LEA

Bottom Hole Location If Different From Surface

UL or lot No.	Section	Township	Range	Lot Idn	Feet from the	North/South line	Feet from the	East/West line	County
Dedicated Acres 40	Joint or Infill	Consolidation Code	Order No.						

NO ALLOWABLE WILL BE ASSIGNED TO THIS COMPLETION UNTIL ALL INTERESTS HAVE BEEN CONSOLIDATED
OR A NON-STANDARD UNIT HAS BEEN APPROVED BY THE DIVISION



SCALE: 1"=2000'
GEODETIC COORDINATES
NAD 27 NME
Y=552514.3 N
X=864316.9 E
LAT.=32.513419° N
LONG.=103.151500° W
LAT.=32°30'48.31" N
LONG.=103°09'05.40" W

OPERATOR CERTIFICATION

I hereby certify that the information herein is true and complete to the best of my knowledge and belief, and that this organization either owns a working interest or unleased mineral interest in the land including the proposed bottom hole location or has a right to drill this well at this location pursuant to a contract with an owner of such mineral or working interest, or to a voluntary pooling agreement or a compulsory pooling order heretofore entered by the division.

S. Mackay 3/26/08
Signature Date
Sophie Mackay
Printed Name

SURVEYOR CERTIFICATION

I hereby certify that the well location shown on this plat was plotted from field notes of actual surveys made by me or under my supervision, and that the same is true and correct to the best of my belief.

DECEMBER 21, 2007
Date Surveyed DSS
Signature & Seal of Professional Surveyor
3239
Certificate No. GARY EIDSON 12841
RONALD J. EIDSON 3239