

District I  
1625 N. French Dr., Hobbs, NM 88240  
District II  
1301 W. Grand Avenue, Artesia, NM 88210  
District III  
1000 Rio Brazos Road, Aztec, NM 87410  
District IV  
1220 S. St. Francis Dr., Santa Fe, NM 87505

State of New Mexico  
Energy Minerals and Natural Resources

RECEIVED

Form C-101  
May 27, 2004

Oil Conservation Division  
1220 South St. Francis Dr.  
Santa Fe, NM 87505

Submit to appropriate District Office

☐ AMENDED REPORT  
☒ Permit renewal request

HOBBS OCD

APPLICATION FOR PERMIT TO DRILL, RE-ENTER, DEEPEN, PLUGBACK, OR ADD A ZONE

<sup>1</sup> Operator Name and Address: Melrose Operating Co., c/o Box 953, Midland, TX 79702		<sup>2</sup> OGRID Number: 184860
<sup>3</sup> Property Code 25191	<sup>4</sup> Property Name Jalmat Field Yates Sand Unit	<sup>5</sup> API Number 30-025-38874 <sup>6</sup> Well No. 195
<sup>9</sup> Proposed Pool 1: Jalmat, Tansill-Yates-7 Rvrs		<sup>10</sup> Proposed Pool 2

<sup>7</sup> Surface Location

UL or lot no. H	Section 14	Township 22-S	Range 35-E	Lot Idn	Feet from the 1970	North/South line North	Feet from the 448	East/West line East	County Lea
--------------------	---------------	------------------	---------------	---------	-----------------------	---------------------------	----------------------	------------------------	---------------

<sup>8</sup> Proposed Bottom Hole Location If Different From Surface

UL or lot no.	Section	Township	Range	Lot Idn	Feet from the	North/South line	Feet from the	East/West line	County
---------------	---------	----------	-------	---------	---------------	------------------	---------------	----------------	--------

Additional Well Information

<sup>11</sup> Work Type Code N	<sup>12</sup> Well Type Code O	<sup>13</sup> Cable/Rotary R	<sup>14</sup> Lease Type Code State	<sup>15</sup> Ground Level Elevation 3584'
<sup>16</sup> Multiple No	<sup>17</sup> Proposed Depth 4200'	<sup>18</sup> Formation Yates	<sup>19</sup> Contractor TBA	<sup>20</sup> Spud Date 4-18-08
Depth to Groundwater: 120'		Distance from nearest fresh water well: approx. none		Distance from nearest surface water: none
Pit: Liner: Synthetic: X 12 mils thick Clay <input type="checkbox"/>		Pit Volume: 3000 bbls		Drilling Method:
Closed-Loop System <input type="checkbox"/>		Fresh Water X Brine X Diesel/Oil-based <input type="checkbox"/> Gas/Air <input type="checkbox"/>		CW 185'

<sup>21</sup> Proposed Casing and Cement Program

Hole Size	Casing Size	Casing weight/foot	Setting Depth	Sacks of Cement	Estimated TOC
12 1/4"	8 5/8"	24#	350'	375 sx	Surface
7 7/8"	5 1/2"	15 5#	4200'	925 sx	Surface

<sup>22</sup> Describe the proposed program. If this application is to DEEPEN or PLUG BACK, give the data on the present productive zone and proposed new productive zone. Describe the blowout prevention program, if any. Use additional sheets if necessary.

Propose to drill 12 1/4" hole to 350', set 8 5/8" casing @ 350', cementing with 375 sx CI C, slurry wt of 14.8 ppg, yield of 1.34 cf/sx, type CI C with 2% CaCl2.  
Drill 7 7/8" hole to 4200', run open hole logs, set production casing string to approximately 4200', cementing with lead slurry of 600 sx, 50:50 poz CI C w/10% bentonite + Sodium Chloride + 0.2% FL, slurry weight - 11.80 ppg, yield - 2.45 cf/sx; tail w/ 325 sx, 50:50 poz CI C + 10% bentonite + Sodium Chloride + 0.2% FL, slurry weight - 14.2 ppg, yield - 1.3 cf/sx.  
Will perforate, stimulate & test well.  
We do not anticipate encountering any H2S intervals during the drilling of this well, based on wells drilled offsetting this location and producing wells in the unit.

<sup>23</sup> I hereby certify that the information given above is true and complete to the best of my knowledge and belief. I further certify that the drilling pit will be constructed according to NMOCD guidelines X, a general permit ☐, or an (attached) alternative OCD-approved plan ☐.

Printed name: Ann E. Ritchie  
Title: Regulatory Agent  
E-mail Address: ann.ritchie@wtor.net  
Date: 4-11-08

Phone: 432 684-6381/214-762-0830

OIL CONSERVATION DIVISION

Approved by:

Chris Williams

Title: OC DISTRICT SUPERVISOR/GENERAL MANAGER

Approval Date:

APR 29 2008

Expiration Date:

Conditions of Approval Attached ☐

Permit Expires 2 Years From Approval  
Date Unless Drilling Underway

## State of New Mexico

## DISTRICT I

1625 N. FRENCH DR., HOBBS, NM 88240

Energy, Minerals and Natural Resources Department

Form C-102

Revised JUNE 10, 2003

## DISTRICT II

1301 W. GRAND AVENUE, ARTESIA, NM 88210

## OIL CONSERVATION DIVISION

Submit to Appropriate District Office

State Lease - 4 Copies

Fee Lease - 3 Copies

1220 SOUTH ST. FRANCIS DR.

Santa Fe, New Mexico 87505

## DISTRICT III

1000 Rio Brazos Rd., Aztec, NM 87410

## DISTRICT IV

1220 S. ST. FRANCIS DR., SANTA FE, NM 87505

## WELL LOCATION AND ACREAGE DEDICATION PLAT

☐ AMENDED REPORT

API Number 30-025 - 38874		Pool Code 33820	Pool Name Jalmat (T-Y-7 Rvrs)
Property Code 25191	Property Name JALMAT Field Yates Sand Unit		Well Number 195
OGRID No. 184860	Operator Name MELROSE OPERATING COMPANY		Elevation 3584'

## Surface Location

UL or lot No.	Section	Township	Range	Lot Idn	Feet from the	North/South line	Feet from the	East/West line	County
H	14	22-S	35-E		1970	NORTH	448	EAST	LEA

## Bottom Hole Location If Different From Surface

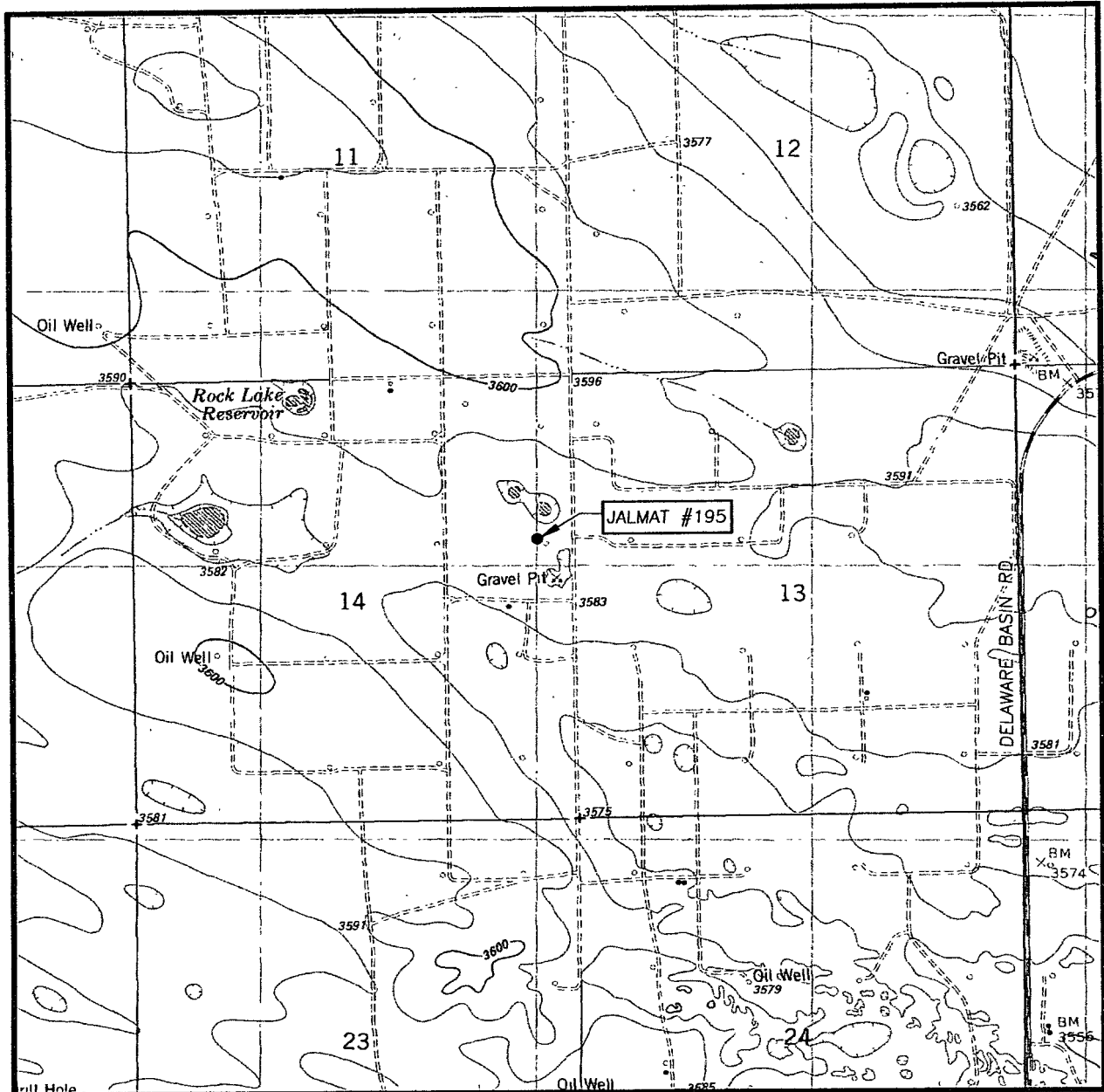
UL or lot No.	Section	Township	Range	Lot Idn	Feet from the	North/South line	Feet from the	East/West line	County

Dedicated Acres 40	Joint or Infill	Consolidation Code	Order No. Waterflood Unit
-----------------------	-----------------	--------------------	------------------------------

NO ALLOWABLE WILL BE ASSIGNED TO THIS COMPLETION UNTIL ALL INTERESTS HAVE BEEN CONSOLIDATED  
OR A NON-STANDARD UNIT HAS BEEN APPROVED BY THE DIVISION

	<b>OPERATOR CERTIFICATION</b>  I hereby certify the the information contained herein is true and complete to the best of my knowledge and belief.  <i>Ann E. Ritchie</i> Signature Ann E. Ritchie Printed Name Regulatory Agent Title 4-11-08 Date	
	<b>SURVEYOR CERTIFICATION</b>  I hereby certify that the well location shown on this plat was plotted from field notes of actual surveys made by me or under my supervision, and that the same is true and correct to the best of my belief.  	
	Date Surveyed Signature & Seal of Professional Surveyor Certificate No. GARY EIDSON 12641	
	Date Signature Title	

# LOCATION VERIFICATION MAP



SCALE: 1" = 2000'

CONTOUR INTERVAL:  
OIL CENTER, N.M. - 10'

SEC. 14 TWP. 22-S RGE. 35-E

SURVEY N.M.P.M.

COUNTY LEA STATE N.M.

DESCRIPTION 1970' FNL & 448' FEL

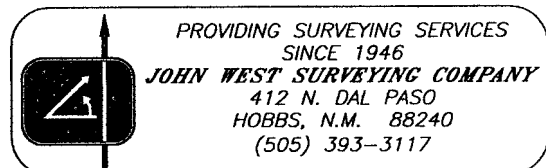
ELEVATION 3584'

OPERATOR MELROSE OPERATING COMPANY

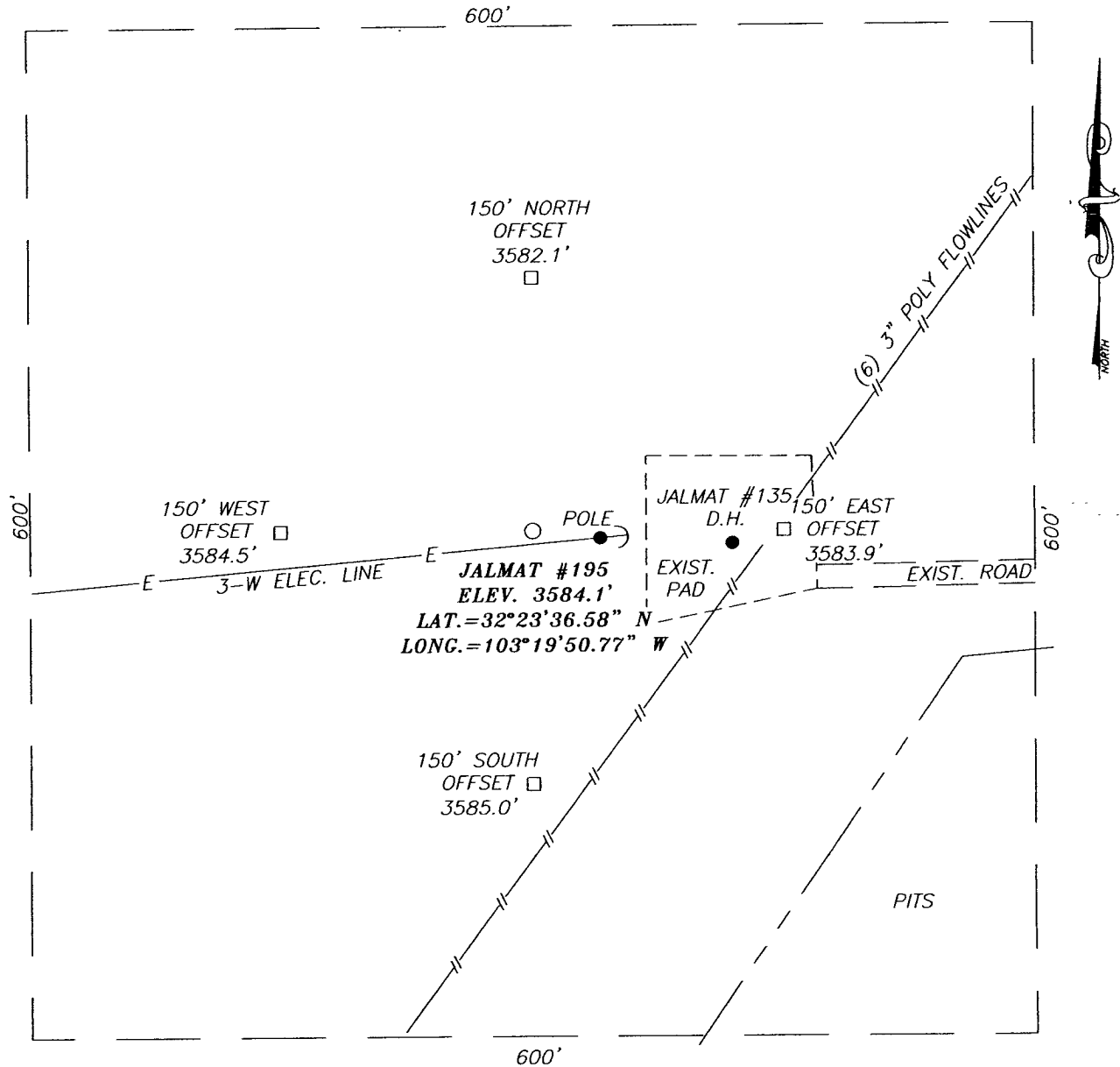
LEASE JALMAT

U.S.G.S. TOPOGRAPHIC MAP

OIL CENTER, N.M.

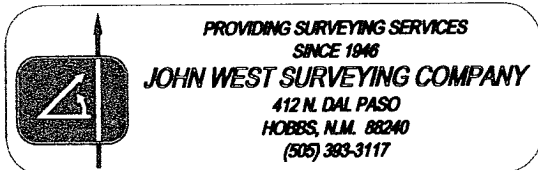
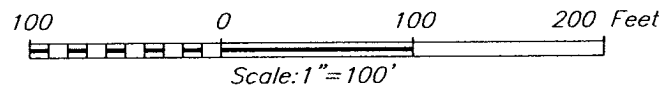


**SECTION 14, TOWNSHIP 22 SOUTH, RANGE 35 EAST, N.M.P.M.,**  
LEA COUNTY, NEW MEXICO



**DIRECTIONS TO LOCATION**

FROM THE INTERSECTION OF WEAVER ROAD AND DELAWARE BASIN ROAD GO WEST ON DELAWARE BASIN ROAD APPROX. 0.8 MILES. TURN RIGHT AT CATTLE GUARD AND GO WEST-NORTHWEST APPROX. 0.3 MILES THRU CATTLE GUARD. CONTINUE WEST APPROX. 1.0 MILES. TURN LEFT AND GO SOUTH APPROX. 0.5 MILES. TURN RIGHT AND GO WEST APPROX. 260 FEET TO TO THE JALMAT #135 DRY HOLE MARKER. THIS LOCATION IS APPROX. 120 FEET NORTHWEST.

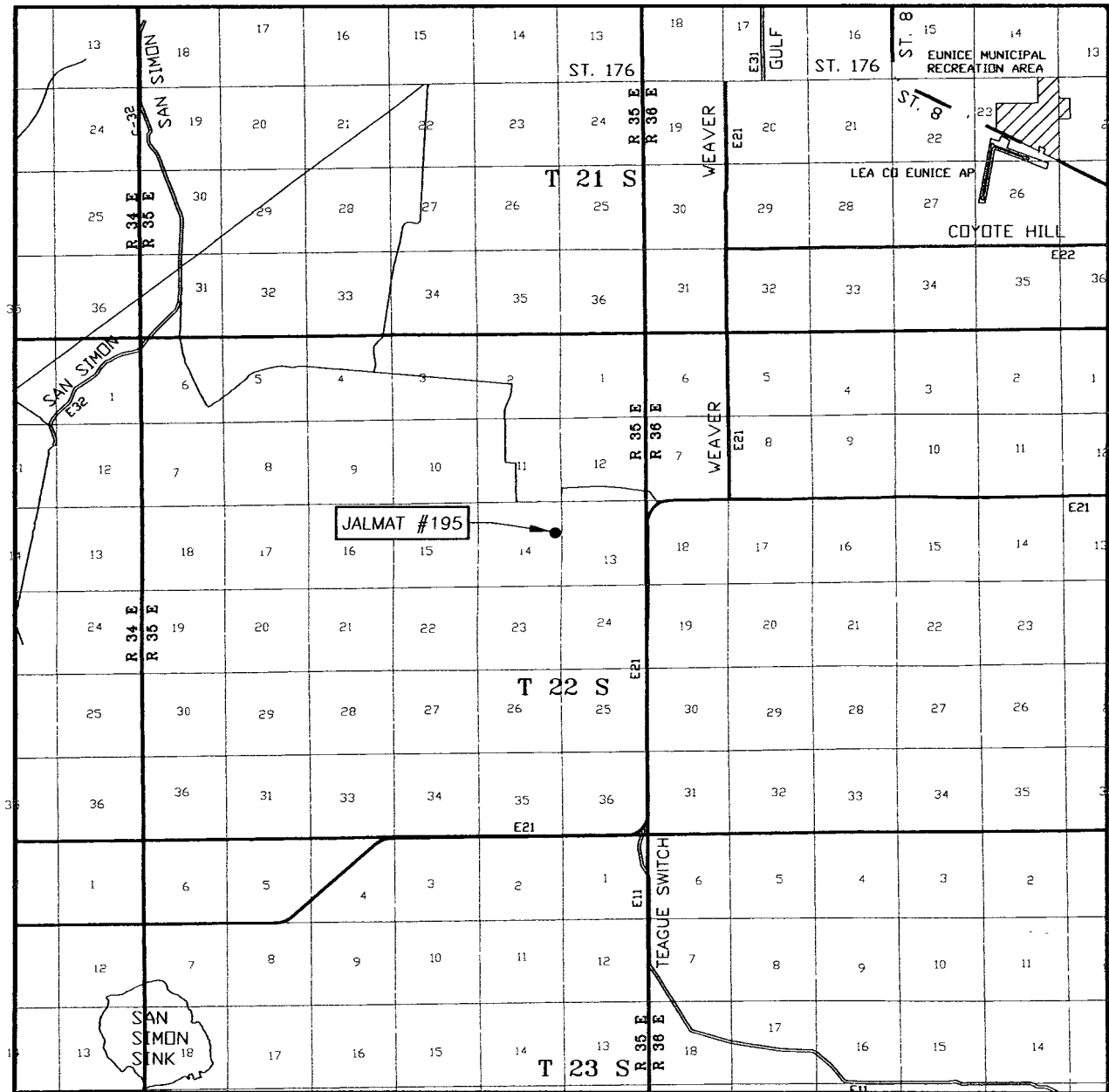


**MELROSE OPERATING COMPANY**

JALMAT #195 WELL  
LOCATED 1970 FEET FROM THE NORTH LINE  
AND 448 FEET FROM THE EAST LINE OF SECTION 14,  
TOWNSHIP 22 SOUTH, RANGE 35 EAST, N.M.P.M.,  
LEA COUNTY, NEW MEXICO.

Survey Date: 1/23/06	Sheet 1 of 1 Sheets
W.O. Number: 06.11.0157	Dr By: LA
Date: 1/27/06	Disk: CD#5
06110157	Scale: 1"=100'

# VICINITY MAP



SCALE: 1" = 2 MILES

SEC. 14 TWP. 22-S RGE. 35-E

SURVEY N.M.P.M.

COUNTY LEA STATE N.M.

DESCRIPTION 1970' FNL & 448' FEL

ELEVATION 3584'

OPERATOR MELROSE OPERATING COMPANY

LEASE JALMAT

