

District I
1625 N. French Dr., Hobbs, NM 88240
District II
1301 W. Grand Avenue, Artesia, NM 88210
District III
1000 Rio Brazos Road, Aztec, NM 87410
District IV
1220 S. St. Francis Dr., Santa Fe, NM 87505

State of New Mexico
Energy Minerals and Natural Resources

Form C-101
May 27, 2004

Oil Conservation Division
1220 South St. Francis Dr.
Santa Fe, NM 87505

RECEIVED

Submit to appropriate District Office

MAY 13 2008

☐ AMENDED REPORT

HOBBS OCD

APPLICATION FOR PERMIT TO DRILL, RE-ENTER, DEEPEN, PLUG BACK, OR ADD A ZONE

¹ Operator Name and Address: Melrose Operating Co., c/o Box 953, Midland, TX 79702		² OGRID Number: 184860	
³ Property Code 25203		⁴ API Number 30-025-38918	
⁵ Property Name Cone Jalmat Yates Pool Unit		⁶ Well No. 130	
⁹ Proposed Pool 1: Jalmat, Tansill-Yates-7 Rvrs		¹⁰ Proposed Pool 2	

⁷ Surface Location

UL or lot no.	Section	Township	Range	Lot Idn	Feet from the	North/South line	Feet from the	East/West line	County
N	13	22-S	35-E		610	South	2015	West	Lea

⁸ Proposed Bottom Hole Location If Different From Surface

UL or lot no.	Section	Township	Range	Lot Idn	Feet from the	North/South line	Feet from the	East/West line	County

Additional Well Information

¹¹ Work Type Code N	¹² Well Type Code O	¹³ Cable/Rotary R	¹⁴ Lease Type Code State	¹⁵ Ground Level Elevation 3571'
¹⁶ Multiple No	¹⁷ Proposed Depth 4200'	¹⁸ Formation Yates	¹⁹ Contractor TBA	²⁰ Spud Date 5-20-08
Depth to Groundwater: 120'		Distance from nearest fresh water well: approx. none		Distance from nearest surface water: none
Pit: Liner: Synthetic: X 12 mils thick Clay <input type="checkbox"/> Pit Volume: 3000 bbls Drilling Method:				
Closed-Loop System <input type="checkbox"/> Fresh Water X Brine X Diesel/Oil-based <input type="checkbox"/> Gas/Air <input type="checkbox"/>				

²¹ Proposed Casing and Cement Program

Hole Size	Casing Size	Casing weight/foot	Setting Depth	Sacks of Cement	Estimated TOC
12 1/4"	8 5/8"	24#	350'	375 sx	Surface
7 7/8"	5 1/2"	15 5#	4200'	925 sx	Surface

²² Describe the proposed program. If this application is to DEEPEN or PLUG BACK, give the data on the present productive zone and proposed new productive zone. Describe the blowout prevention program, if any. Use additional sheets if necessary.

Propose to drill 12 1/4" hole to 350', set 8 5/8" casing @ 350', cementing with 375 sx Cl C, slurry wt of 14.8 ppg, yield of 1.34 cf/sx, type Cl C with 2% CaCl₂.
Drill 7 7/8" hole to 4200', run open hole logs, set production casing string to approximately 4200', cementing with lead slurry of 600 sx, 50:50 poz Cl C w/10% bentonite + Sodium Chloride + 0.2% FL, slurry weight - 11.80 ppg, yield - 2.45 cf/sx; tail w/ 325 sx, 50:50 poz Cl C + 10% bentonite + Sodium Chloride + 0.2% FL, slurry weight - 14.2 ppg, yield - 1.3 cf/sx.
Will perforate, stimulate & test well.
We do not anticipate encountering any H₂S intervals during the drilling of this well, based on wells drilled offsetting this location and producing wells in the unit.

²³ I hereby certify that the information given above is true and complete to the best of my knowledge and belief. I further certify that the drilling pit will be constructed according to NMOCD guidelines X, a general permit ☐, or an (attached) alternative OCD-approved plan ☐.

Printed name: Ann E. Ritchie

Ann E. Ritchie

Title: Regulatory Agent

E-mail Address: ann.ritchie@wtor.net

Date: 5-6-08

Phone: 432 684-6381/214-762-0830

OIL CONSERVATION DIVISION

Approved by:

Chris Williams

Title: OIL CONSERVATION DISTRICT SUPERVISOR/GENERAL MANAGER

Approval Date: MAY 21 2008

Expiration Date:

Conditions of Approval Attached ☐

Permit Expires 2 Years From Approval
Date Unless Drilling Underway

State of New Mexico

DISTRICT I

2015 N. FRENCH DR., HOBBS, NM 88240

Energy, Minerals and Natural Resources Department

Form C-102

DISTRICT II

1301 W. GRAND AVENUE, ARTESIA, NM 88210

OIL CONSERVATION DIVISION

1220 SOUTH ST. FRANCIS DR.
Santa Fe, New Mexico 87505

Revised October 12, 2005
Submit to Appropriate District Office
State LEase - 4 Copies
Fee LEase - 3 Copies

DISTRICT III

1000 Rio Brazos Rd., Aztec, NM 87410

DISTRICT IV

1220 S. ST. FRANCIS DR., SANTA FE, NM 87505

WELL LOCATION AND ACREAGE DEDICATION PLAT

☐ AMENDED REPORT

API Number 30-025 - 38918	Pool Code 33820	Pool Name Jalmat (T-Y-7 Rvrs)
Property Code 25203	Property Name CONE JALMAT YATES POOL UNIT	Well Number 130
OGRID No. 184860	Operator Name MELROSE OPERATING COMPANY	Elevation 3571'

Surface Location

UL or lot No.	Section	Township	Range	Lot Idn	Feet from the	North/South line	Feet from the	East/West line	County
N	13	22-S	35-E		610	SOUTH	2015	WEST	LEA

Bottom Hole Location If Different From Surface

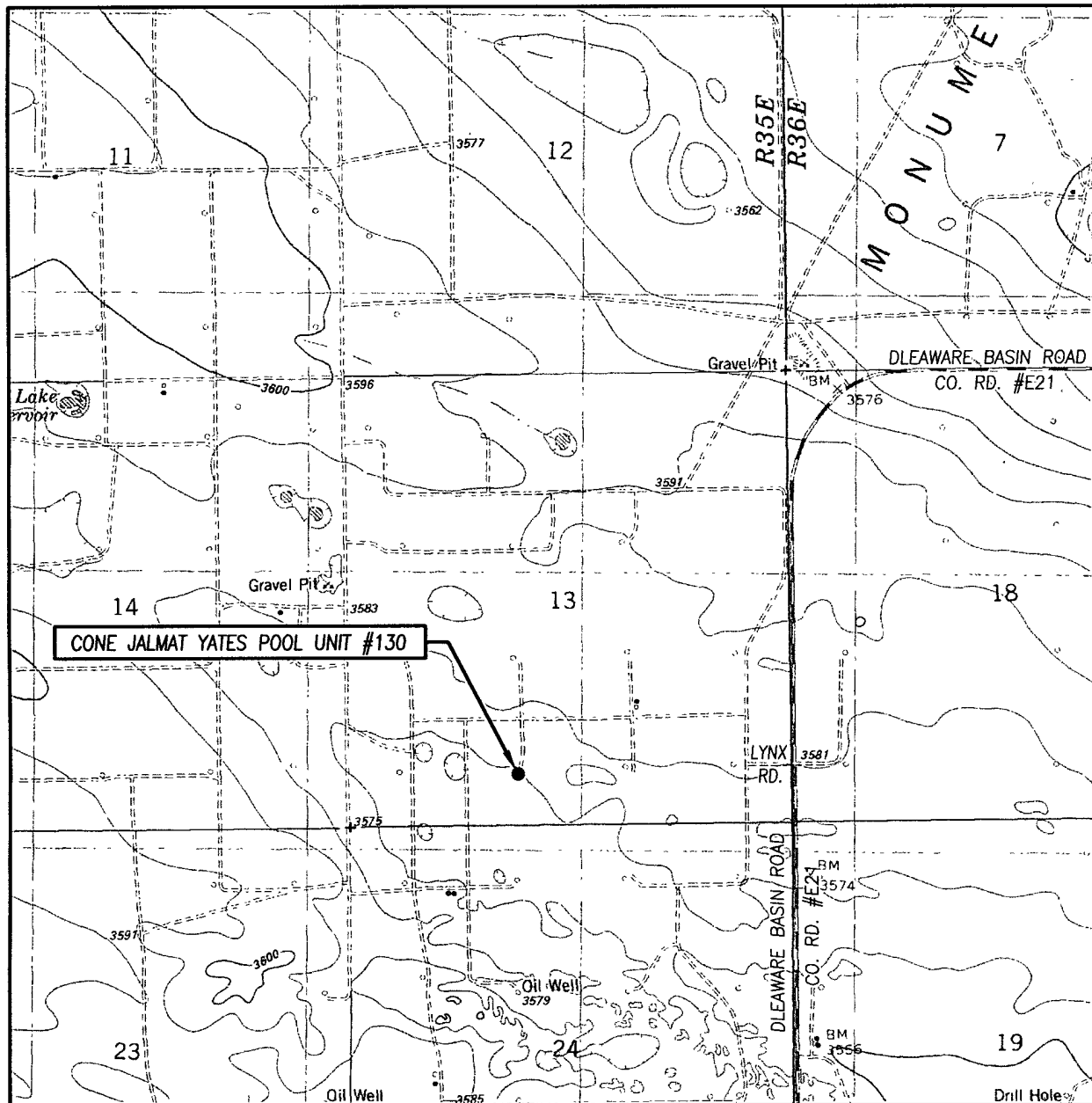
UL or lot No.	Section	Township	Range	Lot Idn	Feet from the	North/South line	Feet from the	East/West line	County
Dedicated Acres 40	Joint or Infill	Consolidation Code	Order No.						

Waterflood Unit

NO ALLOWABLE WILL BE ASSIGNED TO THIS COMPLETION UNTIL ALL INTERESTS HAVE BEEN CONSOLIDATED
OR A NON-STANDARD UNIT HAS BEEN APPROVED BY THE DIVISION

<p>GEODETIC COORDINATES NAD 27 NME. SURFACE LOCATION</p> <p>Y=505649.5 N X=811950.2 E</p> <p>LAT.=32.386094° N LONG.=103.322790° W</p>	<p>OPERATOR CERTIFICATION</p> <p>I hereby certify that the information herein is true and complete to the best of my knowledge and belief, and that this organization either owns a working interest or unleased mineral interest in the land including the proposed bottom hole location, or has a right to drill this well at this location pursuant to a contract with an owner of such mineral or working interest, or to a voluntary pooling agreement or a compulsory pooling order heretofore entered by the division.</p> <p><i>Ann E. Ritchie</i> 5-6-08 Signature Date</p> <p>Ann E. Ritchie Printed Name</p>
	<p>SURVEYOR CERTIFICATION</p> <p>I hereby certify that the well location shown on this plat was plotted from field notes of actual surveys made by me or under my supervision, and that the same is true and correct to the best of my belief.</p> <p>APR 24 2008 Date Surveyed NEW MEXICO Signature & Seal of Professional Surveyor 3239 REG. 110577 OFFICIAL SEAL 5/6/08 Certificate No. GARY G. EIDSON 12641 RONALD J. EIDSON 3130</p>

LOCATION VERIFICATION MAP



SCALE: 1" = 610'

CONTOUR INTERVAL: 10'
OIL CENTER, NM

SEC. 13 TWP. 22-S RGE. 35-E

SURVEY N.M.P.M.

COUNTY LEA STATE NEW MEXICO

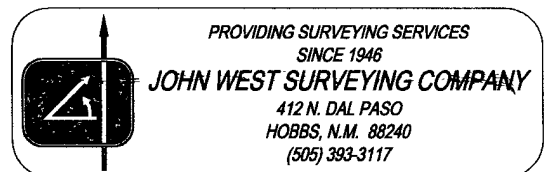
DESCRIPTION 610' FSL & 2015' FWL

ELEVATION 3571'

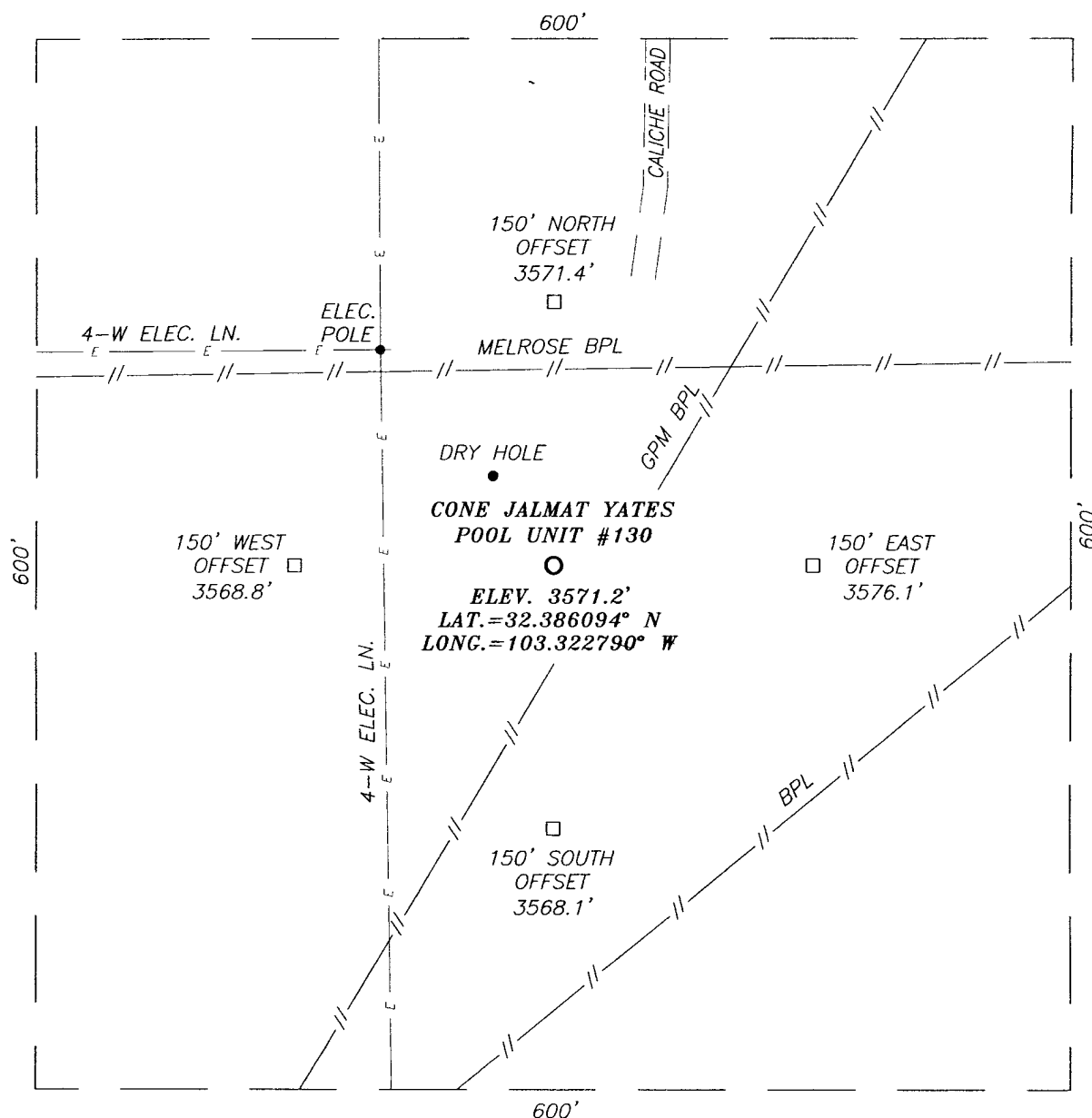
OPERATOR MELROSE
OPERATING COMPANY

LEASE CONE JALMAT YATES POOL UNIT

U.S.G.S. TOPOGRAPHIC MAP
OIL CENTER, NM

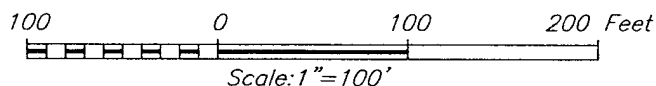


SECTION 13, TOWNSHIP 22 SOUTH, RANGE 35 EAST, N.M.P.M.,
LEA COUNTY, NEW MEXICO



DIRECTIONS TO LOCATION

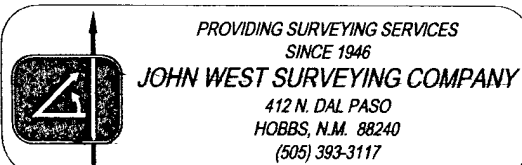
FROM THE INTERSECTION OF COUNTY ROAD #E21 (DELAWARE BASIN ROAD) AND CALICHE ROAD (LYNX ROAD), GO WEST ON LYNX ROAD APPROX. 0.1 MILE. TURN RIGHT AND GO NORTH APPROX. 0.1 MILE. TURN LEFT AND GO WEST APPROX. 0.5 MILES. TURN LEFT AND GO SOUTH APPROX. 650 FEET TO AN EXISTING WELL PAD AND THIS LOCATION.



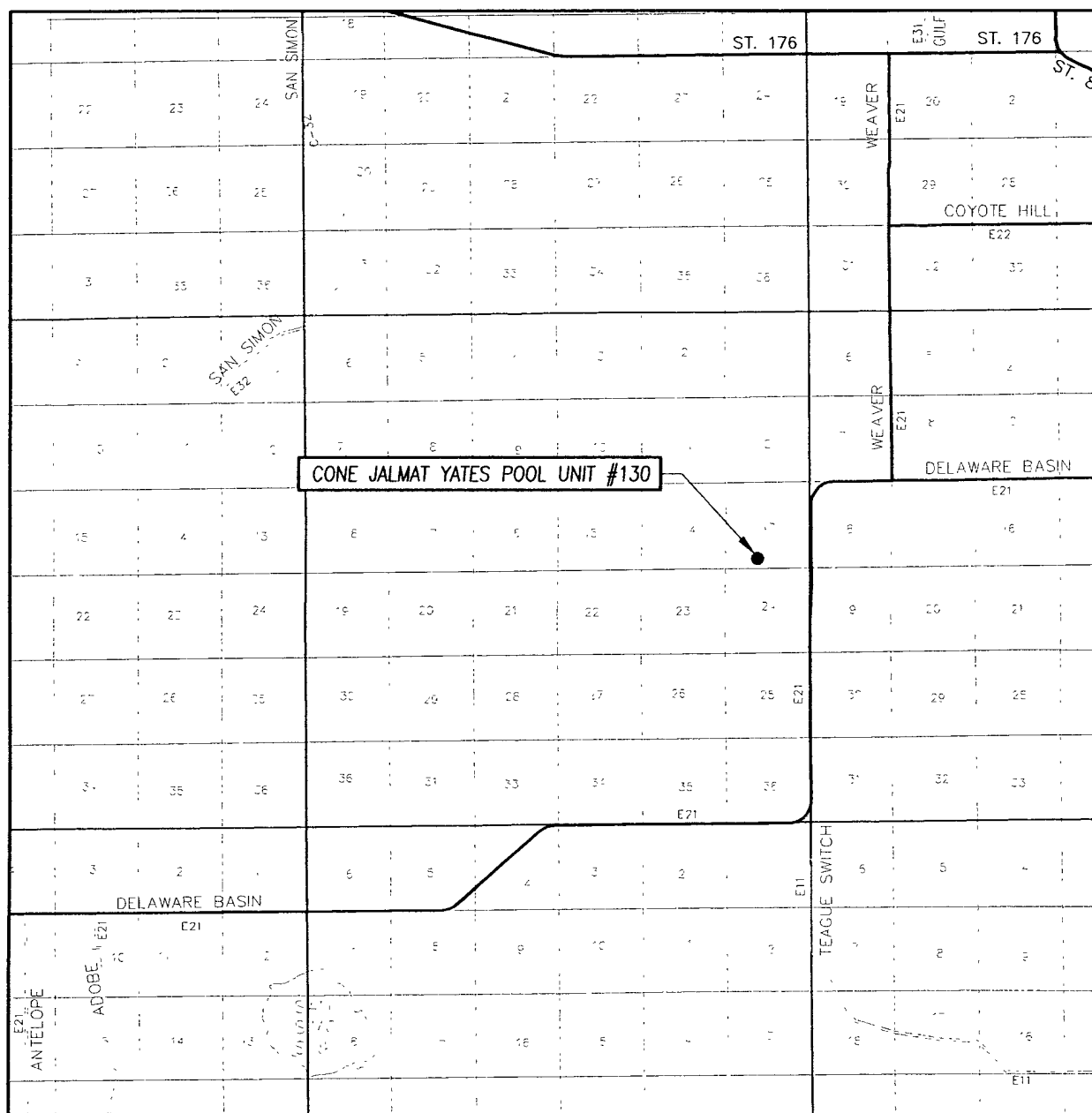
MELROSE OPERATING COMPANY

CONE JALMAT YATES POOL UNIT #130 WELL
LOCATED 610 FEET FROM THE SOUTH LINE
AND 2015 FEET FROM THE WEST LINE OF SECTION 13,
TOWNSHIP 22 SOUTH, RANGE 35 WEST, N.M.P.M.,
LEA COUNTY, NEW MEXICO.

Survey Date: 4/24/08	Sheet 1 of 1 Sheets
W.O. Number: 08.11.0577	Dr By: DSS
Date: 4/30/08	08110577
	Scale: 1"=100'



VICINITY MAP



SCALE: 1" = 2 MILES

SEC. 13 TWP. 22-S RGE. 35-E

SURVEY N.M.P.M.

COUNTY LEA STATE NEW MEXICO

DESCRIPTION 610' FSL & 2015' FWL

ELEVATION 3571'

OPERATOR MELROSE OPERATING COMPANY

LEASE CONE JALMAT YATES POOL UNIT

