

District I
1625 N. French Dr., Hobbs, NM 88240
District II
1301 W. Grand Avenue, Artesia, NM 88210
District III
1000 Rio Brazos Road, Aztec, NM 87410
District IV
1220 S. St. Francis Dr., Santa Fe, NM 87505

State of New Mexico
Energy Minerals and Natural Resources

Form C-101
May 27, 2004

Oil Conservation Division
1220 South St. Francis Dr.
Santa Fe, NM 87505

Submit to appropriate District Office

☐ AMENDED REPORT

APPLICATION FOR PERMIT TO DRILL, RE-ENTER, DEEPEN, PLUGBACK, OR ADD A ZONE

¹ Operator Name and Address: Melrose Operating Co., c/o Box 953, Midland, TX 79702		² OGRID Number: 184860
³ Property Code 25203	⁴ Property Name Cone Jalmat Yates Pool Unit	⁵ API Number 30 - 025 ⁶ Well No. 145
⁹ Proposed Pool 1: Jalmat, Tansill-Yates-7 Rvrs		¹⁰ Proposed Pool 2

⁷ Surface Location

UL or lot no	Section	Township	Range	Lot Idn	Feet from the	North/South line	Feet from the	East/West line	County
F	24	22-S	35-E		2560	North	1410	West	Lea

⁸ Proposed Bottom Hole Location If Different From Surface

UL or lot no	Section	Township	Range	Lot Idn	Feet from the	North/South line	Feet from the	East/West line	County

Additional Well Information

¹¹ Work Type Code N	¹² Well Type Code O	¹³ Cable/Rotary R	¹⁴ Lease Type Code State	¹⁵ Ground Level Elevation 3587'
¹⁶ Multiple No	¹⁷ Proposed Depth 4200'	¹⁸ Formation Yates	¹⁹ Contractor TBA	²⁰ Spud Date 5-20-08
Depth to Groundwater: 120'		Distance from nearest fresh water well: approx - none		Distance from nearest surface water: none
Pit: Liner: Synthetic: X 12_mils thick Clay <input type="checkbox"/> Pit Volume: 3000_bbls Drilling Method: Closed-Loop System <input type="checkbox"/> Fresh Water X Brine X Diesel/Oil-based <input type="checkbox"/> Gas/Air <input type="checkbox"/>				

²¹ Proposed Casing and Cement Program

Hole Size	Casing Size	Casing weight/foot	Setting Depth	Sacks of Cement	Estimated TOC
12 1/4"	8 5/8"	24#	350'	375 sx	Surface
7 7/8"	5 1/2"	15 5#	4200'	925 sx	Surface

²² Describe the proposed program. If this application is to DEEPEN or PLUG BACK, give the data on the present productive zone and proposed new productive zone. Describe the blowout prevention program, if any. Use additional sheets if necessary.

Propose to drill 12 1/4" hole to 350', set 8 5/8" casing @ 350'; cementing with 375 sx CI C, slurry wt of 14.8 ppg, yield of 1.34 cf/sx, type CI C with 2% CaCl₂.
Drill 7 7/8" hole to 4200', run open hole logs, set production casing string to approximately 4200', cementing with lead slurry of 600 sx, 50:50 poz CI C w/10% bentonite + Sodium Chloride + 0.2% FL, slurry weight - 11.80 ppg, yield - 2.45 cf/sx; tail w/ 325 sx, 50:50 poz CI C + 10% bentonite + Sodium Chloride + 0.2% FL, slurry weight - 14.2 ppg, yield - 1.3 cf/sx.
Will perforate, stimulate & test well.
We do not anticipate encountering any H₂S intervals during the drilling of this well, based on wells drilled offsetting this location and producing wells in the unit.

²³ I hereby certify that the information given above is true and complete to the best of my knowledge and belief. I further certify that the drilling pit will be constructed according to NMOCD guidelines X, a general permit ☐, or an (attached) alternative OCD-approved plan ☐.

Printed name: Ann E. Ritchie
Title: Regulatory Agent
E-mail Address: ann.ritchie@wtor.net

Date: 5-6-08

Phone: 432 684-6381/214-762-0830

OIL CONSERVATION DIVISION

Approved by:

Chris Williams

Title: OC DISTRICT SUPERVISOR/GENERAL MANAGER

Approval Date:

Expiration Date:

Conditions of Approval Attached ☐

**Permit Expires 2 Years From Approval
Date Unless Drilling Underway**

DISTRICT I

2560 N. FRENCH DR., HOBBS, NM 88240

DISTRICT II

1301 W. GRAND AVENUE, ARTESIA, NM 88210

DISTRICT III

1000 Rio Brazos Rd., Aztec, NM 87410

DISTRICT IV

1220 S. ST. FRANCIS DR., SANTA FE, NM 87505

State of New Mexico

Energy, Minerals and Natural Resources Department

OIL CONSERVATION DIVISION

1220 SOUTH ST. FRANCIS DR.
Santa Fe, New Mexico 87505

Form C-102

Revised October 12, 2005

Submit to Appropriate District Office

State LEase - 4 Copies

Fee LEase - 3 Copies

WELL LOCATION AND ACREAGE DEDICATION PLAT

☐ AMENDED REPORT

API Number 30-025 - 38920	Pool Code 33820	Pool Name Jalmat (T-Y-7 Rvrs)
Property Code 25203	Property Name CONE JALMAT YATES POOL UNIT	Well Number 145
OGRID No. 184860	Operator Name MELROSE OPERATING COMPANY	Elevation 3587'

Surface Location

UL or lot No.	Section	Township	Range	Lot Idn	Feet from the	North/South line	Feet from the	East/West line	County
F	24	22-S	35-E		2560	NORTH	1410	WEST	LEA

Bottom Hole Location If Different From Surface

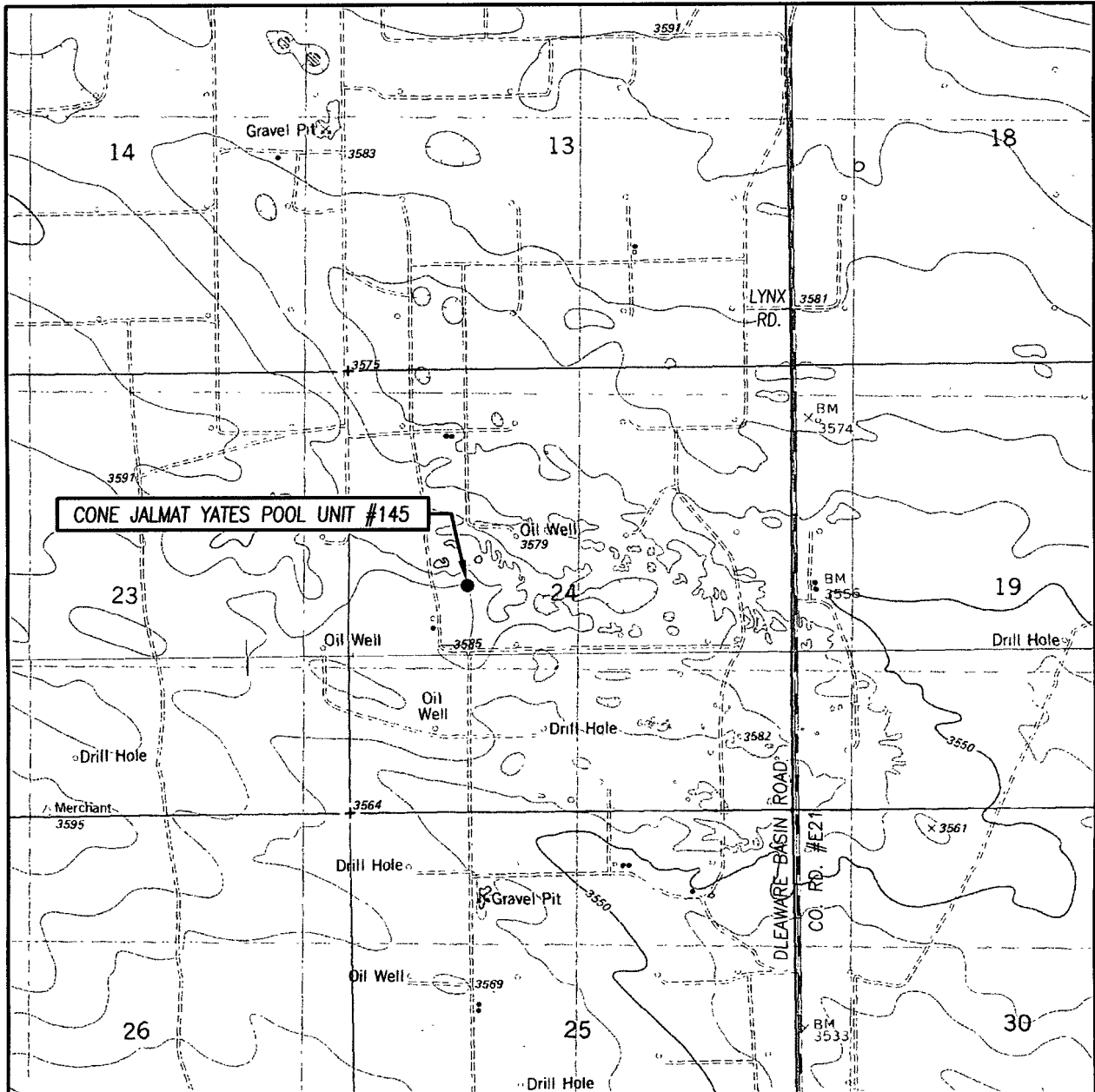
UL or lot No.	Section	Township	Range	Lot Idn	Feet from the	North/South line	Feet from the	East/West line	County

Dedicated Acres	Joint or Infill	Consolidation Code	Order No.
40			Waterflood Unit

NO ALLOWABLE WILL BE ASSIGNED TO THIS COMPLETION UNTIL ALL INTERESTS HAVE BEEN CONSOLIDATED
OR A NON-STANDARD UNIT HAS BEEN APPROVED BY THE DIVISION

	OPERATOR CERTIFICATION I hereby certify that the information herein is true and complete to the best of my knowledge and belief, and that this organization either owns a working interest or unleased mineral interest in the land including the proposed bottom hole location or has a right to drill this well at this location pursuant to a contract with an owner of such mineral or working interest, or to a voluntary pooling agreement or a compulsory pooling order heretofore entered by the division. <u>Ann E. Ritchie</u> 5-6-08 Signature Date Ann E. Ritchie Printed Name
	SURVEYOR CERTIFICATION I hereby certify that the well location shown on this plat was plotted from field notes of actual surveys made by me or under my supervision, and that the same is true and correct to the best of my belief. Date Surveyed: 10-25-2008 DSS Signature & Seal of Professional Surveyor <u>Ronald J. Eidson</u>
	GEODETIC COORDINATES NAD 27 NME. SURFACE LOCATION Y=502471.4 N X=811375.7 E LAT.=32.377374° N LONG.=103.324748° W
	Certificate No. GARY G. EIDSON 12641 RONALD J. EIDSON 3145

LOCATION VERIFICATION MAP



SCALE: 1" = 2000'

CONTOUR INTERVAL: 10'
OIL CENTER, NM
EAST LAKE, NM

SEC. 24 TWP. 22-S RGE. 35-E

SURVEY _____ N.M.P.M.

COUNTY LEA STATE NEW MEXICO

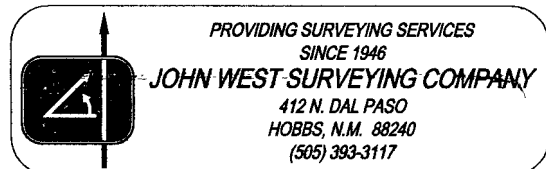
DESCRIPTION 2560' FNL & 1410' FWL

ELEVATION 3587'

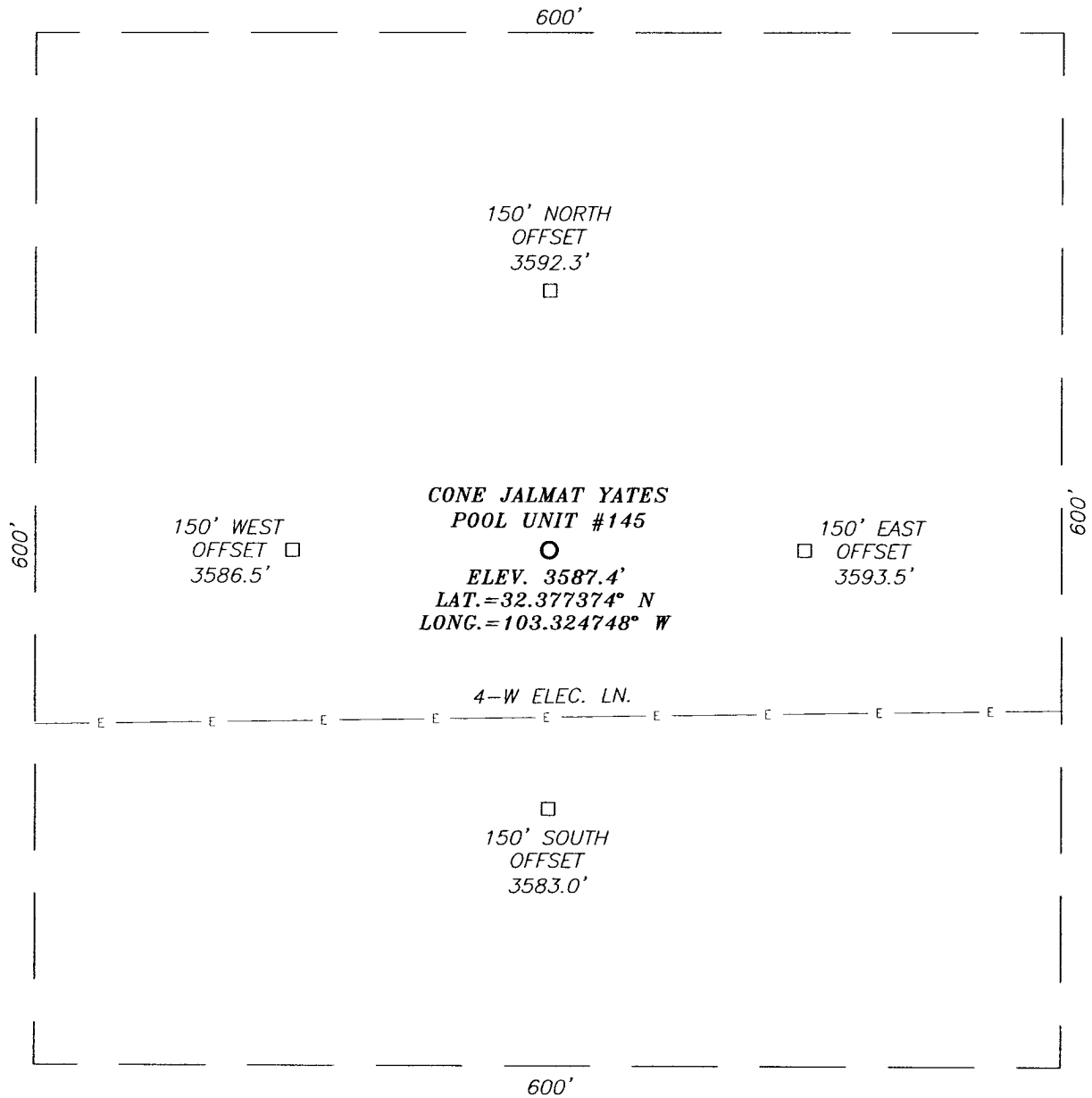
OPERATOR MELROSE
OPERATING COMPANY

LEASE CONE JALMAT YATES POOL UNIT

U.S.G.S. TOPOGRAPHIC MAP
OIL CENTER, NM

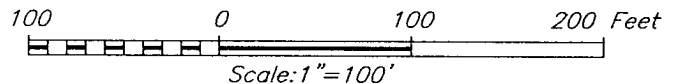


SECTION 24, TOWNSHIP 22 SOUTH, RANGE 35 EAST, N.M.P.M.,
LEA COUNTY NEW MEXICO



DIRECTIONS TO LOCATION

FROM THE INTERSECTION OF COUNTY ROAD #E21
(DELAWARE BASIN ROAD) AND CALICHE ROAD
(LYNX ROAD), GO WEST ON LYNX ROAD APPROX.
0.1 MILE. TURN LEFT AND GO SOUTH APPROX.
0.3 MILES. BEND RIGHT AND GO WEST APPROX.
0.15 MILE. BEND LEFT AND GO SOUTH APPROX.
0.5 MILES. TURN RIGHT AND GO WEST APPROX.
0.7 MILES. TURN RIGHT AND GO NORTH APPROX.
0.15 MILES. THIS LOCATION IS APPROX. 412
FEET EAST.



MELROSE OPERATING COMPANY

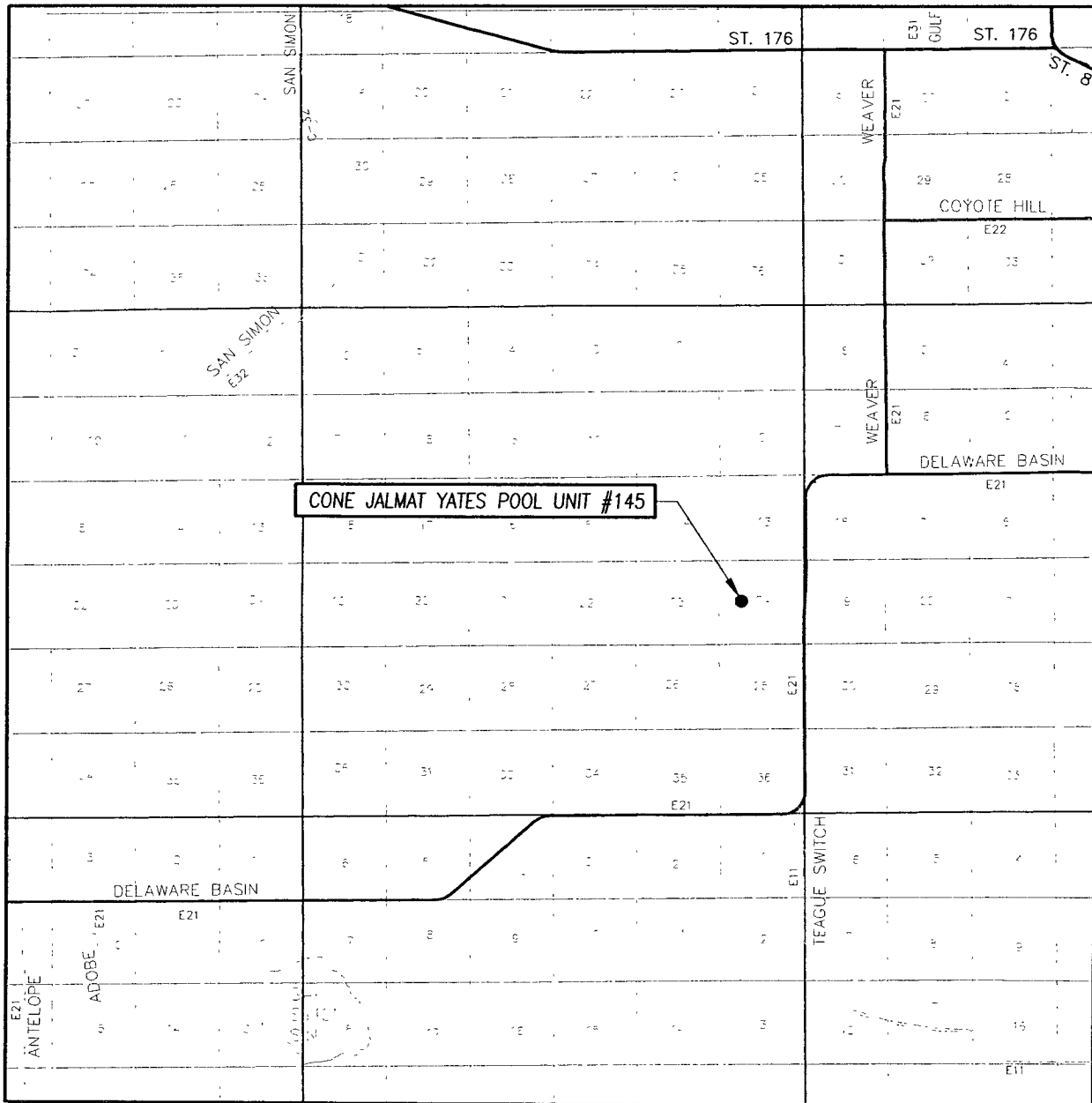
CONE JALMAT YATES POOL UNIT #145 WELL
LOCATED 2560 FEET FROM THE NORTH LINE
AND 1410 FEET FROM THE WEST LINE OF SECTION 24,
TOWNSHIP 22 SOUTH, RANGE 35 WEST, N.M.P.M.,
LEA COUNTY, NEW MEXICO.

Survey Date: 4/25/08	Sheet 1 of 1 Sheets
W.O. Number: 08.11.0582	Dr By: DSS
Date: 4/30/08	08110582
	Scale: 1"=100'



PROVIDING SURVEYING SERVICES
SINCE 1946
JOHN WEST SURVEYING COMPANY
412 N. DAL PASO
HOBBS, N.M. 88240
(505) 393-3117

VICINITY MAP



SCALE: 1" = 2 MILES

SEC. 24 TWP. 22-S RGE. 35-E

SURVEY N.M.P.M.

COUNTY LEA STATE NEW MEXICO

DESCRIPTION 2560' FNL & 1410' FWL

ELEVATION 3587'

OPERATOR MELROSE OPERATING COMPANY

LEASE CONE JALMAT YATES POOL UNIT

